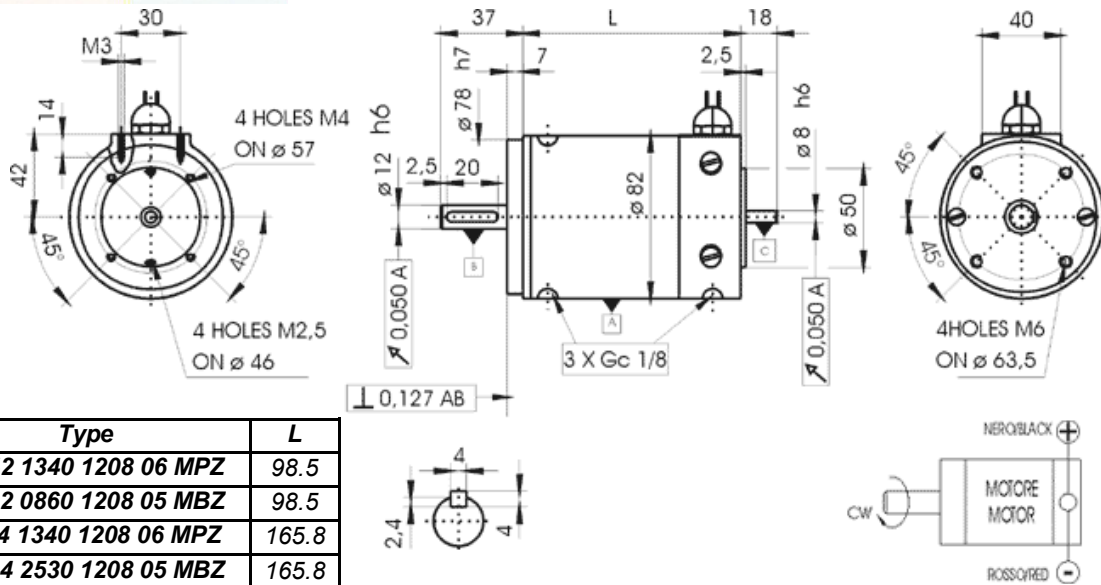




cetronic

Brushed servo motor Series 600



Type	L
M 642 1340 1208 06 MPZ	98.5
M 642 0860 1208 05 MBZ	98.5
M644 1340 1208 06 MPZ	165.8
M 644 2530 1208 05 MBZ	165.8

All Dimensions are in mm

Specifications	Unit	M 642 0860	M 642 1340	M644 1340	M 644 2530
Continuous Stall Torque	Nm	0.66	1.4	1.4	1.4
Peak Stall Torque	Nm	3.3	3.3	6.36	6.36
Continuous Stall Current	A	8	5.2	10.7	5.8
Maximum Pulse Current	A	40	25.9	48.9	26.3
Maximum terminal Voltage	V	60	60	60	60
Maximum Speed	1/min RPM	4000	4000	4000	2400
Rotor moment of inertia	Kg m ²	1.2 x 10 ⁻⁴	1.2 x 10 ⁻⁴	2.4 x 10 ⁻⁴	2.40 x 10 ⁻⁴
Mechanical time Constant	MS	8.1	8.1	6.5	6.5
Motor Mass	Kg	2.3	2.3	3.9	3.9
Thermal resistance (Armature to Ambient) (2)	°C/W	2.7	2.7	1.9	1.9
Maximum armature Temperature	°C	155	155	155	155
Torque Constant (3)	Nm/A	0.0816	0.13	0.13	0.241
Voltage Constant (back emf) (3)	V/1000 1/min RPM	8.6	13.4	13.4	25.3
Armature resistance (4)	Ohms	0.25	0.94	0.25	1
Terminal Resistance (4)	Ohms	0.6	1.1	0.46	1.6
Armature Inductance	mH	0.42	0.86	0.64	1.9
Electrical Time Constant	ms	1.1	1.1	1.7	1.7

The above specifications are quoted as typical values.
Cetronic reserve the right to change the specifications without notice OE&E

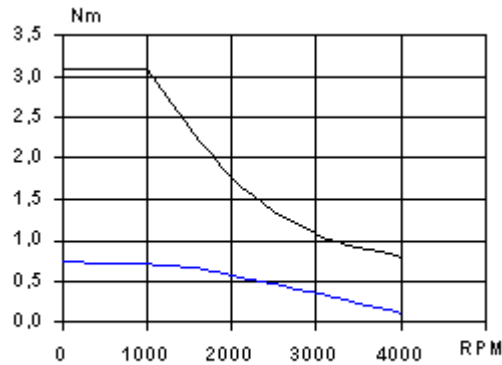
for further information please contact us:
phone: 01590 679900 fax: 01590 677612 e-mail: sales@cetronic.co.uk



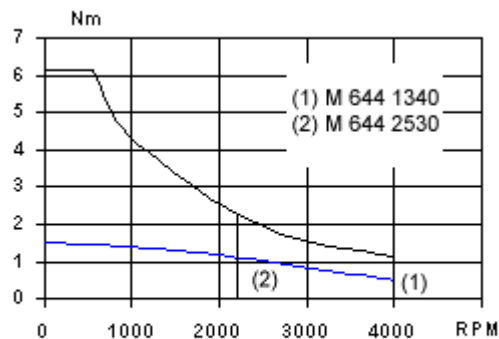
BS EN ISO 9002: 1994
Certificate No. Q06356

Brushed servo motor Series 600

M642



M644



- (1) Ambient Temperature (if not otherwise specified) : 40°C (3) Tolerance $\pm 10\%$
(2) Tests conducted with unit heatsink mounted on a 254 x 254 x 6mm (4) At 25°C

The above specifications are quoted as typical values.
Cetronic reserve the right to change the specifications without notice OE&E

for further information please contact us:
phone: 01794 525828 fax: 01794 525825 e-mail: sales@cetronic.co.uk



BS EN ISO 9002: 1994
Certificate No. Q06356