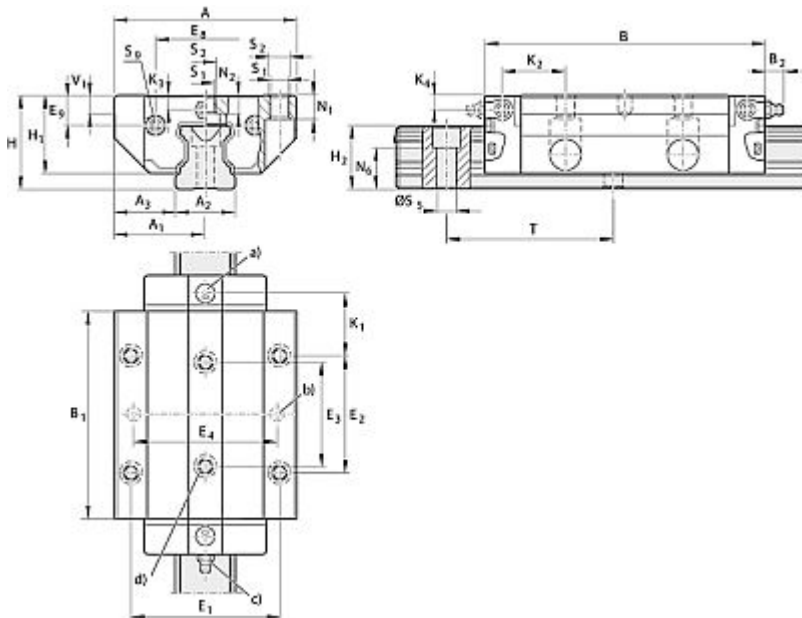
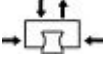
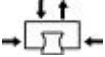






Standard Size 25

Click to enlarge picture.



Part numbers (TNR)	R1653 214 22
Size	25
Accuracy class	N
Preloading	0,02 C
Ball Chain	Yes
Seal	standard
Lubrication	Erstbefettung
A [mm]	70
A₁ [mm]	35
A₂ [mm]	23
A₃ [mm]	23.5
B [mm]	107.9
B₁ [mm]	79.5
H [mm]	36
H₁ [mm]	29.9
K₁ [mm]	23.3
K₂ [mm]	24.45
K₃ [mm]	5.5
K₄ [mm]	5.5
H₂ with rail seal cover strip [mm]	24.45
H₂ without rail seal cover strip [mm]	24.25
E₁ [mm]	57
E₂ [mm]	45

E₃ [mm]	40	
E₈ [mm]	38.3	
E₉ [mm]	11.5	
N₁ [mm]	9.3	
N₂ [mm]	7	
N₆^{±0,5} [mm]	15.2	
S₁ [mm]	6.7	
S₂ [mm]	M8	
S₅ [mm]	7	
S₉ [mm]	M3x5	
T [mm]	60	
V₁ [mm]	7.5	
weight [kg]	0.9	
C [N]	27500	
C₀ [N]	39500	
M_t [Nm]	390	
M_{t0 stat} [Nm]	590	
M_L [Nm]	310	
M_{L0} [Nm]	460	
Note	Load capacities and moments for Ball Runner Block without ball chain. Determination of the dynamic load capacities and moments is based on a travel life of 100,000 m per ISO 14728-1. Often only 50,000 m are actually stipulated. For comparison: Multiply values C, M _t and M _L from the table by 1.26.	
Dynamic characteristics	Travel speed: v _{max} = 5 m/s Acceleration: a _{max} = 500 m/s ² (If F _{comb} > 2.8 · F _{pr} : a _{max} = 50 m/s ²)	
Product group info	Note Can be used on all Ball Guide Rails SNS.	

Issue: 2011-03-28