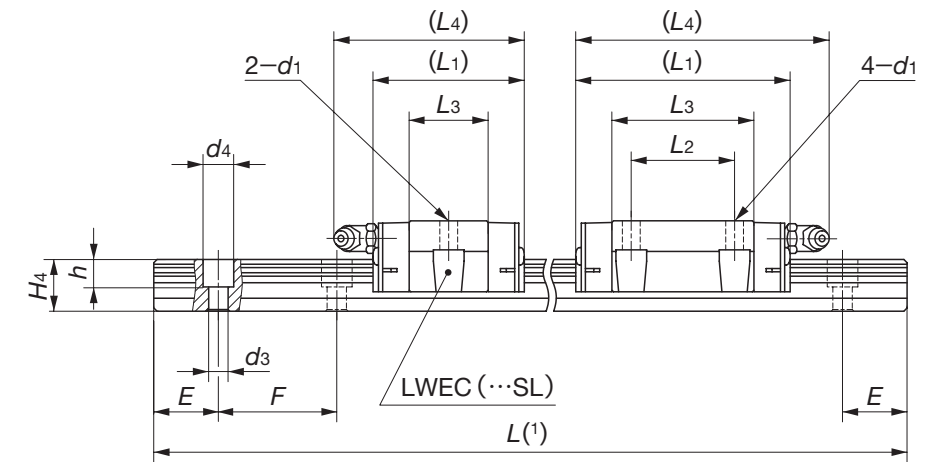
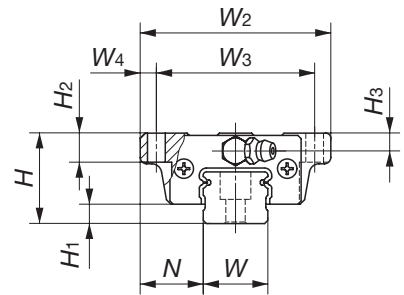


Flange type mounted from bottom
LWEC
LWE
LWEG
LWEC...SL (Stainless steel made)
LWE ...SL (Stainless steel made)
LWEG...SL (Stainless steel made)



Model number	Interchangeable	Mass (Ref.)		Dimensions of assembly mm			Dimensions of slide unit mm							
		Slide unit kg	Track rail kg/m	H	H ₁	N	W ₂	W ₃	W ₄	L ₁	L ₂	L ₃	L ₄	d ₁
LWEC 15	☆	0.11	1.57	24	5.8	18.5	52	41	5.5	41	—	22.4	45	4.5
LWEC 15...SL	☆									57	26	38.4	61	
LWE 15	☆	0.18	2.28	28	6	19.5	59	49	5	70	36	51.1	74	5.5
LWE 15...SL	☆									66.5	32	44	79	
LWEG 15	☆	0.24	2.28	28	6	19.5	59	49	5	70	36	51.1	74	5.5
LWEG 15...SL	☆									66.5	32	44	79	
LWEC 20	☆	0.18	2.28	28	6	19.5	59	49	5	47	—	24.5	59	5.5
LWEC 20...SL	☆									66.5	32	44	79	
LWE 20	☆	0.30	2.28	28	6	19.5	59	49	5	66.5	32	44	79	5.5
LWE 20...SL	☆									82	45	59.9	95	
LWEG 20	☆	0.40	2.28	28	6	19.5	59	49	5	66.5	32	44	79	5.5
LWEG 20...SL	☆									82	45	59.9	95	

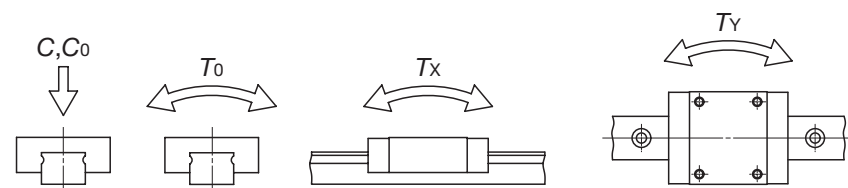
Note⁽¹⁾ : Track rail lengths are shown in Table 12.1 on page B-40 and Table 12.2 on page B-41.

(2) : The directions of basic dynamic load rating (C), basic static load rating (C₀) and static moment rating (T₀, T_x, T_y) are shown in the sketches below. The upper values in the T_x and T_y columns apply to one slide unit, and the lower values apply to two slide units in close contact.

Remark 1 : The mark ☆ indicates that interchangeable specification products are available.

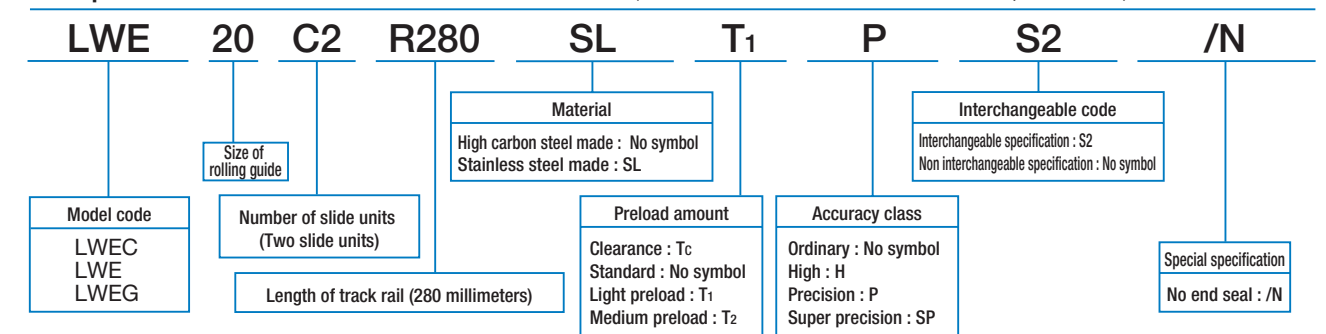
2 : Track rail mounting bolts are not appended. Hexagon socket bolt of JIS B1176 strength division 12.9 or equivalent are recommended for high carbon steel model. The hexagon socket head bolts of JIS B1176 property division A2-70 or equivalent are recommended for stainless steel models. Recommended bolt sizes are shown in Table 6 on page B-37.

3 : For grease nipple specifications, see page 97.

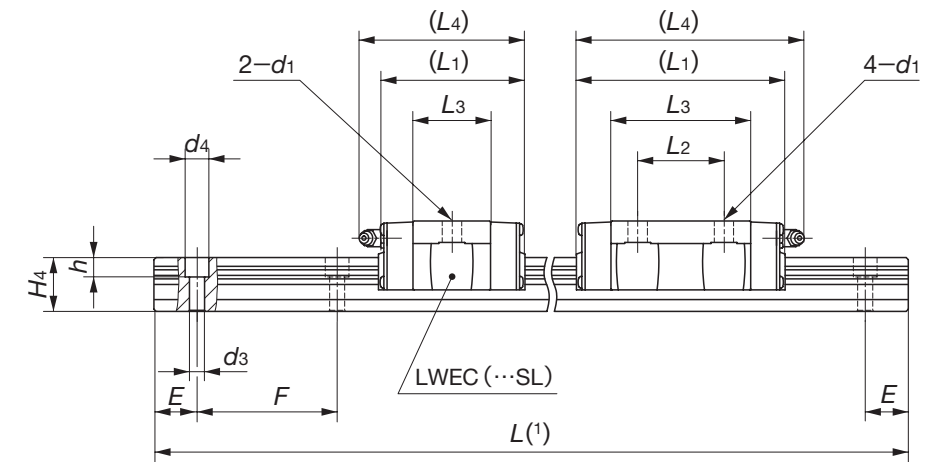
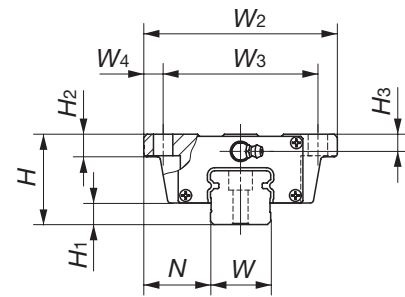


H ₂	H ₃	Dimensions of track rail mm								Basic dynamic load rating ⁽²⁾ C N	Basic static load rating ⁽²⁾ C ₀ N	Static moment rating ⁽²⁾		
		W	H ₄	d ₃	d ₄	h	E	F	T ₀ N·m			T _x N·m	T _y N·m	
7	4.5	15	14.5	3.6	6.5	4.5	20	60		5 240	5 480	43.8	21.3 149	21.3 149
										7 640	9 390	75.1	57.6 333	57.6 333
										9 340	12 500	100	99.5 533	99.5 533
9	5.5	20	16	6	9.5	8.5	20	60		7 570	7 340	78.9	31.5 235	31.5 235
										11 600	13 400	145	95.6 561	95.6 561
										14 400	18 300	197	172 918	172 918

Example of identification number of assembled set (For details, see "Identification number and specification".)



Flange type mounted from bottom
LWEC
LWE
LWEG
LWEC...SL (Stainless steel made)
LWE ...SL (Stainless steel made)
LWEG...SL (Stainless steel made)



Model number	Interchangeable	Mass (Ref.)		Dimensions of assembly mm			Dimensions of slide unit mm							
		Slide unit kg	Track rail kg/m	H	H ₁	N	W ₂	W ₃	W ₄	L ₁	L ₂	L ₃	L ₄	d ₁
LWEC 25	☆	0.33	3.09	33	7	25	73	60	6.5	59	—	32	71	7
LWEC 25...SL	☆									83	35	56	95	
LWE 25	☆	0.55	3.09	33	7	25	73	60	6.5	102	50	75	114	7
LWE 25...SL	☆									83	35	56	95	
LWEG 25	☆	0.73	3.09	33	7	25	73	60	6.5	102	50	75	114	7
LWEG 25...SL	☆									83	35	56	95	
LWEC 30	☆	0.58	5.09	42	10	31	90	72	9	68	—	36	78	9
LWEC 30...SL	☆									97	40	64.8	107	
LWE 30	☆	0.99	5.09	42	10	31	90	72	9	128.5	60	96.5	139	9
LWE 30...SL	☆									97	40	64.8	107	
LWEG 30	☆	1.50	5.09	42	10	31	90	72	9	128.5	60	96.5	139	9
LWEG 30...SL	☆									97	40	64.8	107	
LWEC 35	☆	0.84	6.85	48	11	33	100	82	9	78	—	41.6	90	9
LWE 35	☆									111	50	74.6	123	
LWE 45	☆	2.46	11.2	60	14	37.5	120	100	10	125	60	81.4	136	11

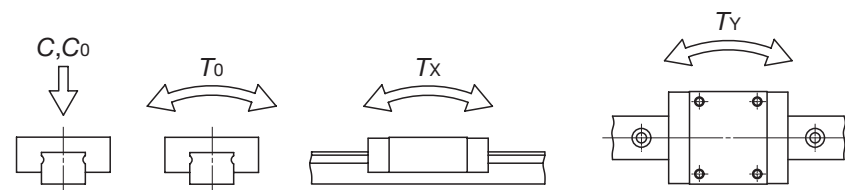
Note(1) : Track rail lengths are shown in Table 12.1 on page B-40 and Table 12.2 on page B-41.

(2) : The directions of basic dynamic load rating (C), basic static load rating (C₀) and static moment rating (T₀, T_x, T_y) are shown in the sketches below. The upper values in the T_x and T_y columns apply to one slide unit, and the lower values apply to two slide units in close contact.

Remark 1 : The mark ☆ indicates that interchangeable specification products are available.

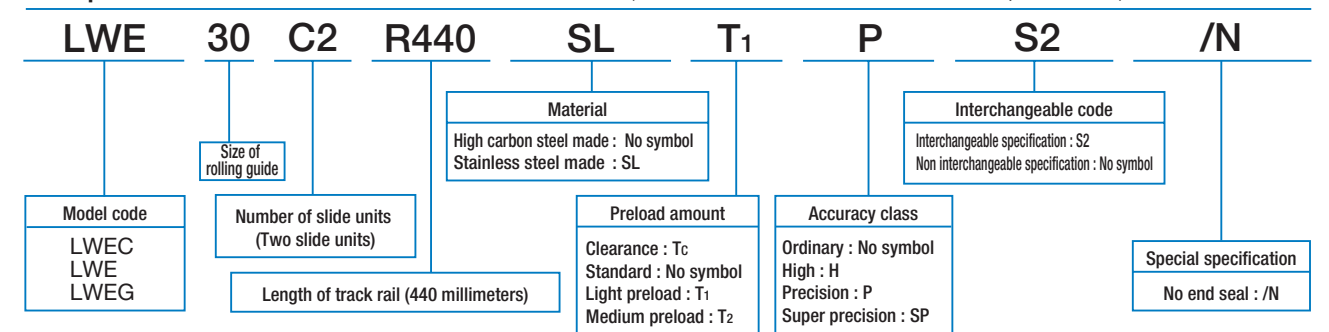
2 : Track rail mounting bolts are not appended. Hexagon socket bolt of JIS B1176 strength division 12.9 or equivalent are recommended for high carbon steel model. The hexagon socket head bolts of JIS B1176 property division A2-70 or equivalent are recommended for stainless steel models. Recommended bolt sizes are shown in Table 6 on page B-37.

3 : For grease nipple specifications, see page 97.

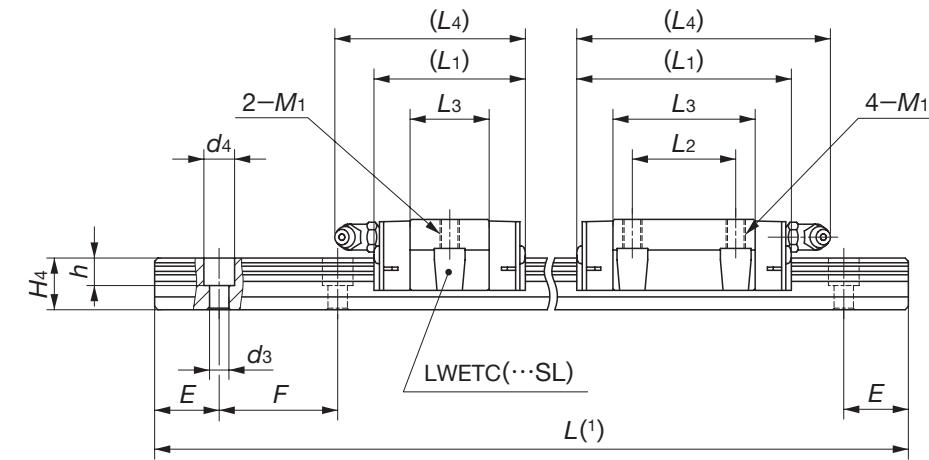
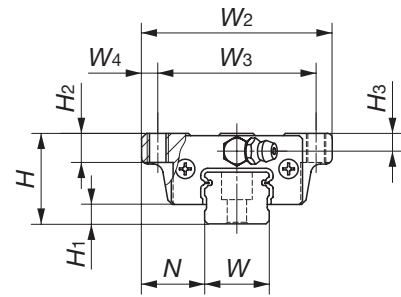


H ₂	H ₃	Dimensions of track rail mm							Basic dynamic load rating ⁽²⁾ C N	Basic static load rating ⁽²⁾ C ₀ N	Static moment rating ⁽²⁾		
		W	H ₄	d ₃	d ₄	h	E	F			T ₀ N·m	T _x N·m	T _y N·m
10	6.5	23	19	7	11	9	20	60	12 400	12 300	153	71.8 480	71.8 480
									18 100	21 100	262	195 1 090	195 1 090
									22 200	28 200	349	336 1 740	336 1 740
10	8	28	25	7	11	9	20	80	20 600	18 800	287	129 855	129 855
									29 500	31 300	479	328 1 920	328 1 920
									39 200	47 000	718	704 3 670	704 3 670
13	10	34	28	9	14	12	20	80	29 900	26 800	412	176 1 190	162 1 100
									42 900	44 700	686	448 2 660	412 2 450
15	13	45	34	11	17.5	14	22.5	105	61 100	60 200	1 210	672 4 070	618 3 750

Example of identification number of assembled set (For details, see "Identification number and specification".)



Flange type mounted from top
LWETC
LWET
LWETG
LWETC...SL (Stainless steel made)
LWET ...SL (Stainless steel made)
LWETG...SL (Stainless steel made)



Model number	Interchangeable	Mass (Ref.)		Dimensions of assembly mm			Dimensions of slide unit mm							
		Slide unit kg	Track rail kg/m	H	H ₁	N	W ₂	W ₃	W ₄	L ₁	L ₂	L ₃	L ₄	M1
LWETC 15	☆	0.11	1.57	24	5.8	18.5	52	41	5.5	41	—	22.4	45	M 5
LWETC 15...SL	☆									57	26	38.4	61	
LWET 15	☆	0.18	2.28	28	6	19.5	59	49	5	70	36	51.1	74	
LWET 15...SL	☆									66.5	32	44	79	
LWETG 15	☆	0.24	2.28	28	6	19.5	59	49	5	82	45	59.9	95	
LWETG 15...SL	☆									82	45	59.9	95	
LWETC 20	☆	0.18	2.28	28	6	19.5	59	49	5	47	—	24.5	59	M 6
LWETC 20...SL	☆									66.5	32	44	79	
LWET 20	☆	0.30	2.28	28	6	19.5	59	49	5	70	36	51.1	74	
LWET 20...SL	☆									66.5	32	44	79	
LWETG 20	☆	0.40	2.28	28	6	19.5	59	49	5	82	45	59.9	95	
LWETG 20...SL	☆									82	45	59.9	95	

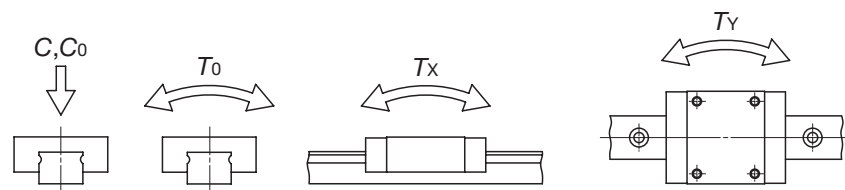
Note⁽¹⁾ : Track rail lengths are shown in Table 12.1 on page B-40 and Table 12.2 on page B-41.

⁽²⁾ : The directions of basic dynamic load rating (C), basic static load rating (C₀) and static moment rating (T₀, T_x, T_y) are shown in the sketches below. The upper values in the T_x and T_y columns apply to one slide unit, and the lower values apply to two slide units in close contact.

Remark 1 : The mark ☆ indicates that interchangeable specification products are available.

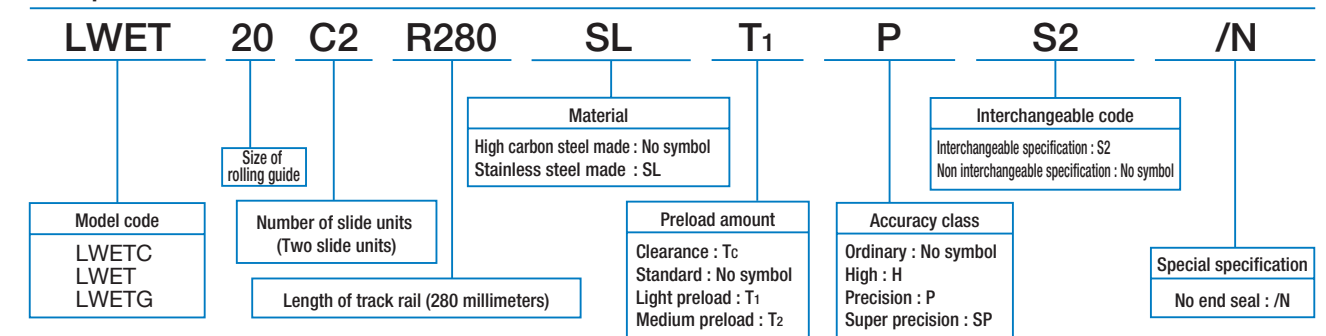
2 : Track rail mounting bolts are not appended. Hexagon socket bolt of JIS B1176 strength division 12.9 or equivalent are recommended for high carbon steel model. The hexagon socket head bolts of JIS B1176 property division A2-70 or equivalent are recommended for stainless steel models. Recommended bolt sizes are shown in Table 6 on page B-37.

3 : For grease nipple specifications, see page 97.

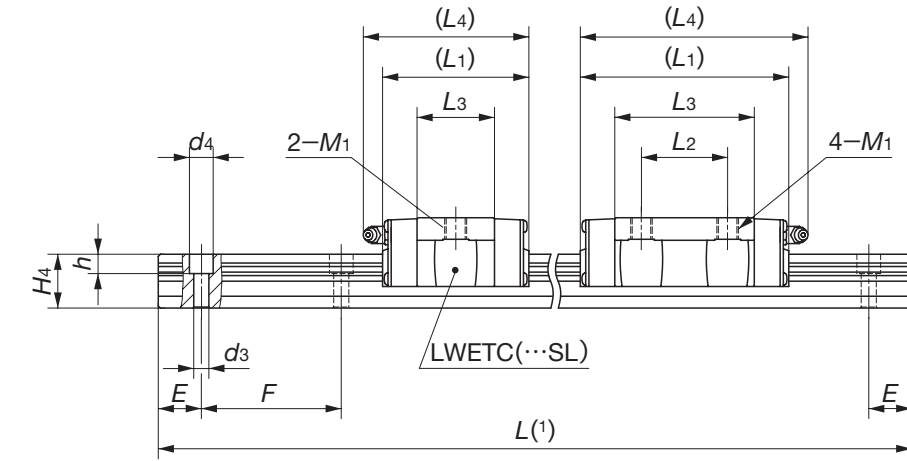
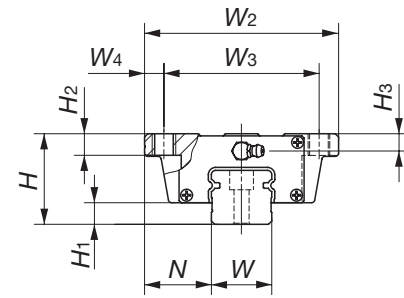


H ₂	H ₃	Dimensions of track rail mm								Basic dynamic load rating ⁽²⁾ C N	Basic static load rating ⁽²⁾ C ₀ N	Static moment rating ⁽²⁾		
		W	H ₄	d ₃	d ₄	h	E	F	T ₀ N·m			T _x N·m	T _y N·m	
7	4.5	15	14.5	3.6	6.5	4.5	20	60		5 240	5 480	43.8	21.3 149	21.3 149
										7 640	9 390	75.1	57.6 333	57.6 333
										9 340	12 500	100	99.5 533	99.5 533
9	5.5	20	16	6	9.5	8.5	20	60		7 570	7 340	78.9	31.5 235	31.5 235
										11 600	13 400	145	95.6 561	95.6 561
										14 400	18 300	197	172 918	172 918

Example of identification number of assembled set (For details, see "Identification number and specification".)



Flange type mounted from top
LWETC
LWET
LWETG
LWETC ...SL (Stainless steel made)
LWET ...SL (Stainless steel made)
LWETG ...SL (Stainless steel made)



Model number	Interchangeable	Mass (Ref.)		Dimensions of assembly mm			Dimensions of slide unit mm							
		Slide unit kg	Track rail kg/m	H	H ₁	N	W ₂	W ₃	W ₄	L ₁	L ₂	L ₃	L ₄	M ₁
LWETC 25	☆	0.33	3.09	33	7	25	73	60	6.5	59	—	32	71	M 8
LWETC 25...SL	☆									83	35	56	95	
LWET 25	☆	0.55	3.09	33	7	25	73	60	6.5	102	50	75	114	M 8
LWET 25...SL	☆									83	35	56	95	
LWETG 25	☆	0.73	3.09	33	7	25	73	60	6.5	102	50	75	114	M 8
LWETG 25...SL	☆									83	35	56	95	
LWETC 30	☆	0.58	5.09	42	10	31	90	72	9	68	—	36	78	M 10
LWETC 30...SL	☆									97	40	64.8	107	
LWET 30	☆	0.99	5.09	42	10	31	90	72	9	128.5	60	96.5	139	M 10
LWET 30...SL	☆									97	40	64.8	107	
LWETG 30	☆	1.50	5.09	42	10	31	90	72	9	128.5	60	96.5	139	M 10
LWETG 30...SL	☆									97	40	64.8	107	
LWETC 35	☆	0.84	6.85	48	11	33	100	82	9	78	—	41.6	90	M 10
LWET 35	☆									111	50	74.6	123	
LWET 45	☆	2.46	11.2	60	14	37.5	120	100	10	125	60	81.4	136	M 12

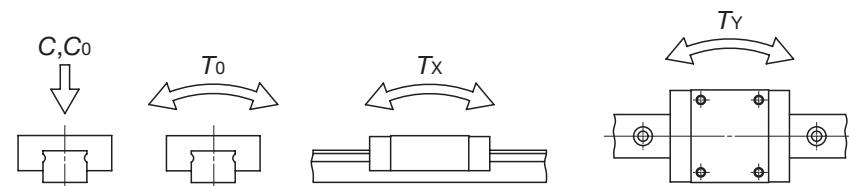
Note(1) : Track rail lengths are shown in Table 12.1 on page B-40 and Table 12.2 on page B-41.

(2) : The directions of basic dynamic load rating (C), basic static load rating (C₀) and static moment rating (T₀, T_x, T_y) are shown in the sketches below. The upper values in the T_x and T_y columns apply to one slide unit, and the lower values apply to two slide units in close contact.

Remark 1 : The mark ☆ indicates that interchangeable specification products are available.

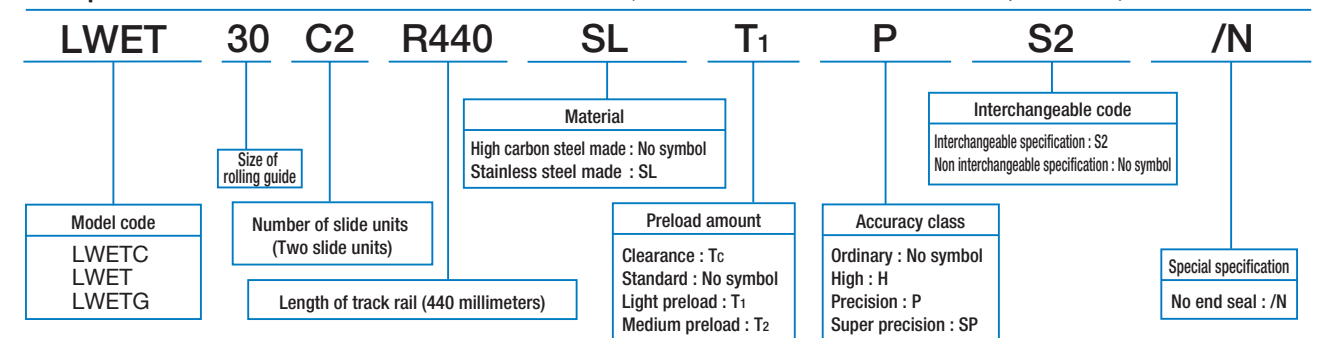
2 : Track rail mounting bolts are not appended. Hexagon socket bolt of JIS B1176 strength division 12.9 or equivalent are recommended for high carbon steel model. The hexagon socket head bolts of JIS B1176 property steel model A2-70 or equivalent are recommended for stainless steel models. Recommended bolt sizes are shown in Table 6 on page B-37.

3 : For grease nipple specifications, see page 97.

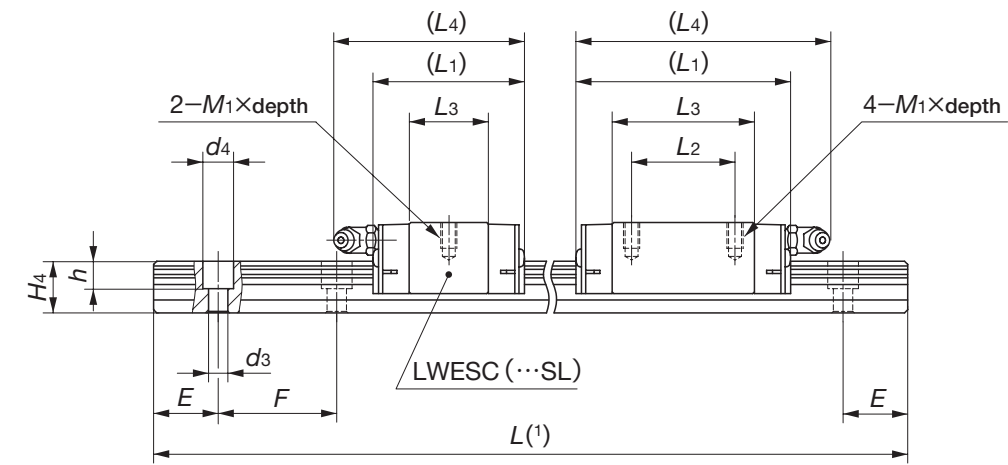
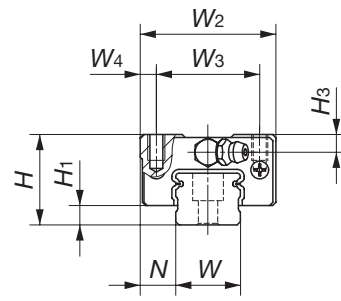


H ₂	H ₃	Dimensions of track rail mm								Basic dynamic load rating ⁽²⁾ C N	Basic static load rating ⁽²⁾ C ₀ N	Static moment rating ⁽²⁾		
		W	H ₄	d ₃	d ₄	h	E	F	T ₀ N·m			T _x N·m	T _y N·m	
10	6.5	23	19	7	11	9	20	60	60	12 400	12 300	153	71.8 480	71.8 480
										18 100	21 100	262	195 1 090	195 1 090
										22 200	28 200	349	336 1 740	336 1 740
10	8	28	25	7	11	9	20	80	80	20 600	18 800	287	129 855	129 855
										29 500	31 300	479	328 1 920	328 1 920
										39 200	47 000	718	704 3 670	704 3 670
13	10	34	28	9	14	12	20	80	80	29 900	26 800	412	176 1 190	162 1 110
										42 900	44 700	686	448 2 660	412 2 450
15	13	45	34	11	17.5	14	22.5	105	105	61 100	60 200	1 210	672 4 070	618 3 750

Example of identification number of assembled set (For details, see "Identification number and specification".)



Block type mounted from top
LWESC
LWES
LWESG
LWESC ...SL (Stainless steel made)
LWES ...SL (Stainless steel made)
LWESG ...SL (Stainless steel made)



Model number	Interchangeable	Mass (Ref.)		Dimensions of assembly mm			Dimensions of slide unit mm						
		Slide unit kg	Track rail kg/m	H	H ₁	N	W ₂	W ₃	W ₄	L ₁	L ₂	L ₃	L ₄
LWESC 15	☆	0.09	1.57	24	5.8	9.5	34	26	4	41	—	22.4	45
LWESC 15...SL	☆									57	26	38.4	61
LWES 15	☆	0.14	1.57	24	5.8	9.5	34	26	4	70	36	51.1	74
LWES 15...SL	☆									70	36	51.1	74
LWESG 15	☆	0.18	1.57	24	5.8	9.5	34	26	4	47	—	24.5	59
LWESG 15...SL	☆									47	—	24.5	59
LWESC 20	☆	0.15	2.28	28	6	11	42	32	5	66.5	32	44	79
LWESC 20...SL	☆									66.5	32	44	79
LWES 20	☆	0.25	2.28	28	6	11	42	32	5	82	45	59.9	95
LWES 20...SL	☆									82	45	59.9	95
LWESG 20	☆	0.33	2.28	28	6	11	42	32	5	82	45	59.9	95
LWESG 20...SL	☆									82	45	59.9	95

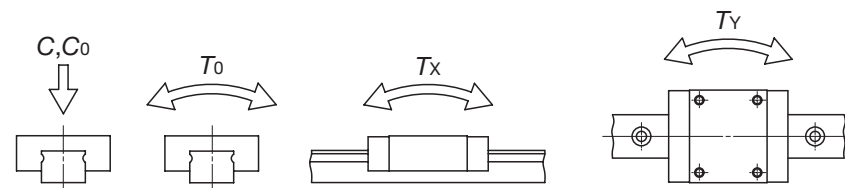
Note⁽¹⁾ : Track rail lengths are shown in Table 12.1 on page B-40 and Table 12.2 on page B-41.

(2) : The directions of basic dynamic load rating (C), basic static load rating (C₀) and static moment rating (T₀, T_x, T_y) are shown in the sketches below. The upper values in the T_x and T_y columns apply to one slide unit, and the lower values apply to two slide units in close contact.

Remark 1 : The mark ☆ indicates that interchangeable specification products are available.

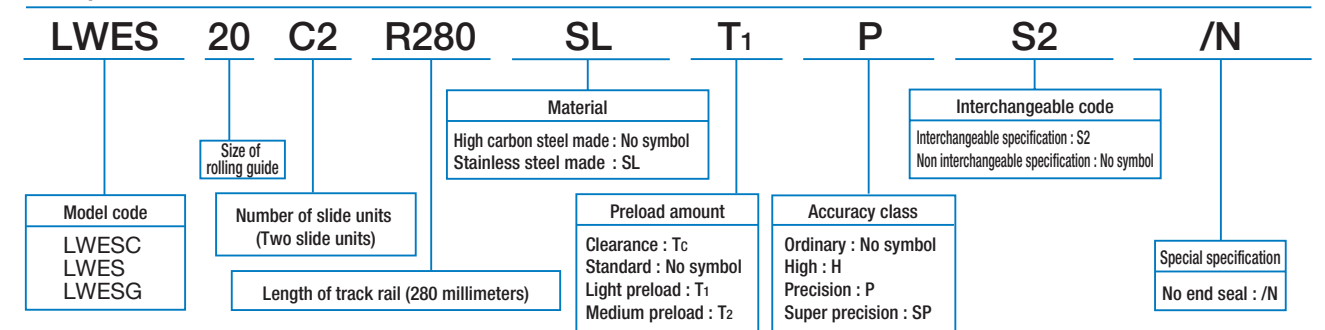
2 : Track rail mounting bolts are not appended. Hexagon socket bolt of JIS B1176 strength division 12.9 or equivalent are recommended for high carbon steel model. The hexagon socket head bolts of JIS B1176 property division A2-70 or equivalent are recommended for stainless steel models. Recommended bolt sizes are shown in Table 6 on page B-37.

3 : For grease nipple specifications, see page 97.

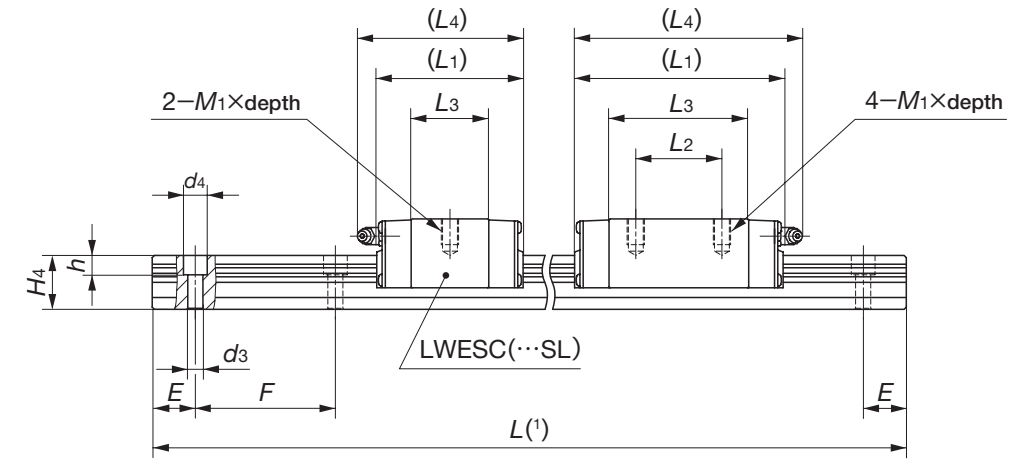
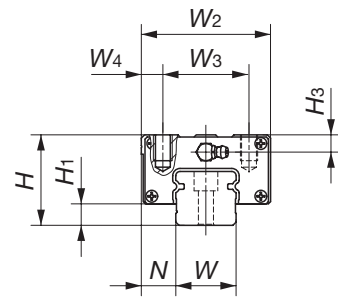


M ₁ ×depth	H ₃	Dimensions of track rail mm							Basic dynamic load rating ⁽²⁾ C N	Basic static load rating ⁽²⁾ C ₀ N	Static moment rating ⁽²⁾		
		W	H ₄	d ₃	d ₄	h	E	F			T ₀ N·m	T _x N·m	T _y N·m
M4×7	4.5	15	14.5	3.6	6.5	4.5	20	60	5 240	5 480	43.8	21.3 149	21.3 149
									7 640	9 390	75.1	57.6 333	57.6 333
									9 340	12 500	100	99.5 533	99.5 533
M5×8	5.5	20	16	6	9.5	8.5	20	60	7 570	7 340	78.9	31.5 235	31.5 235
									11 600	13 400	145	95.6 561	95.6 561
									14 400	18 300	197	172 918	172 918

Example of identification number of assembled set (For details, see "Identification number and specification".)



Block type mounted from top
LWESC
LWES
LWESG
LWESC ...SL (Stainless steel made)
LWES ...SL (Stainless steel made)
LWESG ...SL (Stainless steel made)



Model number	Interchangeable	Mass (Ref.)		Dimensions of assembly mm			Dimensions of slide unit mm						
		Slide unit kg	Track rail kg/m	H	H ₁	N	W ₂	W ₃	W ₄	L ₁	L ₂	L ₃	L ₄
LWESC 25	☆	0.26	3.09	33	7	12.5	48	35	6.5	59	—	32	71
LWESC 25...SL	☆									83	35	56	95
LWES 25	☆	0.42	3.09	33	7	12.5	48	35	6.5	102	50	75	114
LWES 25...SL	☆									128.5	60	96.5	139
LWESG 25	☆	0.55	3.09	33	7	12.5	48	35	6.5	68	—	36	78
LWESG 25...SL	☆									97	40	64.8	107
LWESC 30	☆	0.46	5.09	42	10	16	60	40	10	78	—	41.6	90
LWESC 30...SL	☆									111	50	74.6	123
LWES 30	☆	0.78	5.09	42	10	16	60	40	10	128.5	60	96.5	139
LWES 30...SL	☆									128.5	60	96.5	139
LWESG 30	☆	1.13	5.09	42	10	16	60	40	10	78	—	41.6	90
LWESG 30...SL	☆									111	50	74.6	123
LWESC 35	☆	0.67	6.85	48	11	18	70	50	10	78	—	41.6	90
LWES 35	☆									111	50	74.6	123
LWES 45	☆	2.05	11.2	60	14	20.5	86	60	13	125	60	81.4	136

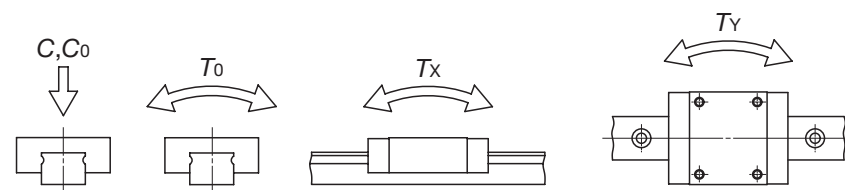
Note(1) : Track rail lengths are shown in Table 12.1 on page B-40 and Table 12.2 on page B-41.

(2) : The directions of basic dynamic load rating (C), basic static load rating (C₀) and static moment rating (T₀, T_x, T_y) are shown in the sketches below. The upper values in the T_x and T_y columns apply to one slide unit, and the lower values apply to two slide units in close contact.

Remark 1 : The mark ☆ indicates that interchangeable specification products are available.

2 : Track rail mounting bolts are not appended. Hexagon socket bolt of JIS B1176 strength division 12.9 or equivalent are recommended for high carbon steel model. The hexagon socket head bolts of JIS B1176 property division A2-70 or equivalent are recommended for stainless steel models. Recommended bolt sizes are shown in Table 6 on page B-37.

3 : For grease nipple specifications, see page 97.



M ₁ × depth	H ₃	Dimensions of track rail mm							Basic dynamic load rating ⁽²⁾ C N	Basic static load rating ⁽²⁾ C ₀ N	Static moment rating ⁽²⁾		
		W	H ₄	d ₃	d ₄	h	E	F			T ₀ N·m	T _x N·m	T _y N·m
M 6 × 9	6.5	23	19	7	11	9	20	60	12 400	12 300	153	71.8 480	71.8 480
									18 100	21 100	262	195 1 090	195 1 090
									22 200	28 200	349	336 1 740	336 1 740
M 8 × 12	8	28	25	7	11	9	20	80	20 600	18 800	287	129 855	129 855
									29 500	31 300	479	328 1 920	328 1 920
									39 200	47 000	718	704 3 670	704 3 670
M 8 × 12	10	34	28	9	14	12	20	80	29 900	26 800	412	176 1 190	162 1 100
									42 900	44 700	686	448 2 660	412 2 450
M10 × 15	13	45	34	11	17.5	14	22.5	105	61 100	60 200	1 210	672 4 070	618 3 750

Example of identification number of assembled set (For details, see "Identification number and specification".)

