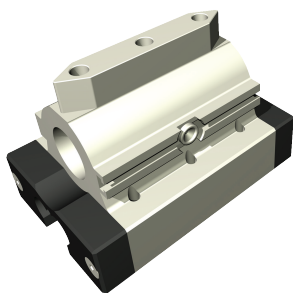


Terhelési adatok

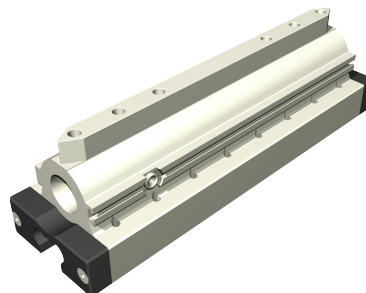
WS 5/70 vagy WS 5/200



WS 5/70

Art.-Nr.: 223 030 0070

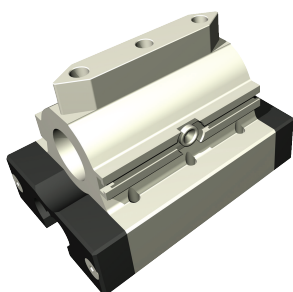
Csúszka WS5/70	
C_0	2576,65 N
C	1461,14 N
F_1 stat.	2200,67 N
F_1 dyn.	1247,93 N
F_2 stat.	2576,65 N
F_2 dyn.	1461,14 N
M_x stat.	36,45 Nm
M_y stat.	82,16 Nm
M_z stat.	96,20 Nm
M_x dyn.	20,67 Nm
M_y dyn.	46,59 Nm
M_z dyn.	54,55 Nm



WS 5/200

Art.-Nr.: 223 030 0200

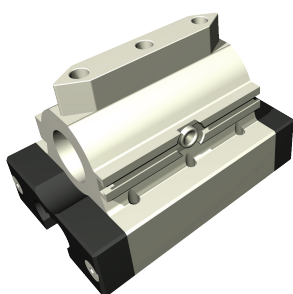
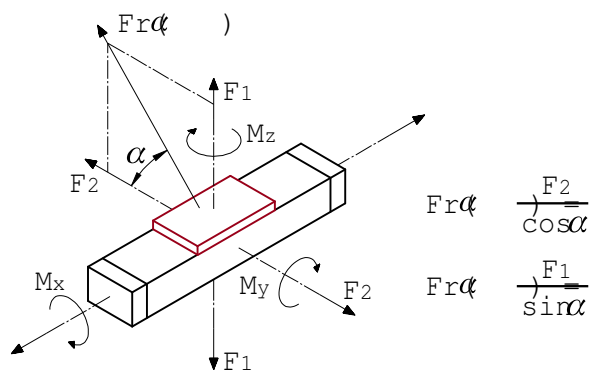
Csúszka WS5/200	
C_0	7594,34 N
C	3003,64 N
F_1 stat.	6486,18 N
F_1 dyn.	2565,35 N
F_2 stat.	7594,34 N
F_2 dyn.	3003,64 N
M_x stat.	107,43 Nm
M_y stat.	242,15 Nm
M_z stat.	283,52 Nm
M_x dyn.	49,49 Nm
M_y dyn.	95,78 Nm
M_z dyn.	112,13 Nm



LES 4

két WS 5/70

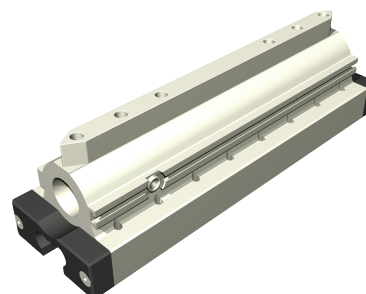
LES4 két WS5/70	
C_0	5153,30 N
C	2319,41 N
F_1 stat.	4401,33 N
F_1 dyn.	1980,96 N
F_2 stat.	5153,30 N
F_2 dyn.	2319,14 N
M_x stat.	46,49 Nm
M_y stat.	182,08 Nm
M_z stat.	213,18 Nm
M_x dyn.	20,92 Nm
M_y dyn.	81,95 Nm
M_z dyn.	95,95 Nm



LES 6

két WS 5/70

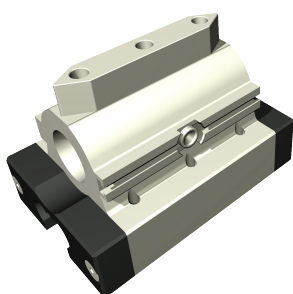
LES6mit két WS5/70	
C_0	5153,30 N
C	2319,41 N
F_1 stat.	4401,33 N
F_1 dyn.	1980,96 N
F_2 stat.	5153,30 N
F_2 dyn.	2319,14 N
M_x stat.	211,54 Nm
M_y stat.	164,31 Nm
M_z stat.	192,39 Nm
M_x dyn.	95,21 Nm
M_y dyn.	73,95 Nm
M_z dyn.	86,59 Nm



LES 6

két WS 5/200

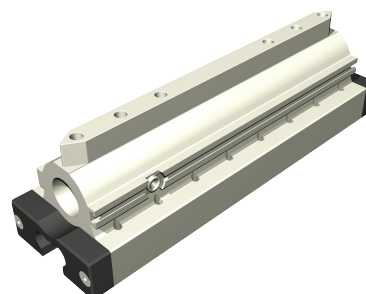
LES6 két WS5/200	
C_0	15188,67 N
C	4767,89 N
F_1 stat.	12972,35 N
F_1 dyn.	4072,24 N
F_2 stat.	15188,67 N
F_2 dyn.	4767,98 N
M_x stat.	623,49 Nm
M_y stat.	484,30 Nm
M_z stat.	567,04 Nm
M_x dyn.	195,73 Nm
M_y dyn.	152,03 Nm
M_z dyn.	178,00 Nm



LES 5

két WS 5/70

LES5 két WS5/70	
C_0	5153,30 N
C	2319,41 N
F_1 stat.	4401,33 N
F_1 dyn.	1980,96 N
F_2 stat.	5153,30 N
F_2 dyn.	2319,14 N
M_x stat.	376,59 Nm
M_y stat.	164,31 Nm
M_z stat.	192,39 Nm
M_x dyn.	169,49 Nm
M_y dyn.	73,95 Nm
M_z dyn.	86,59 Nm



LES 5

két WS 5/200

LES5 két WS5/200	
C_0	15188,67 N
C	4767,89 N
F_1 stat.	12972,35 N
F_1 dyn.	4072,24 N
F_2 stat.	15188,67 N
F_2 dyn.	4767,98 N
M_x stat.	1109,95 Nm
M_y stat.	848,30 Nm
M_z stat.	567,04 Nm
M_x dyn.	348,43 Nm
M_y dyn.	152,03 Nm
M_z dyn.	178,00 Nm