



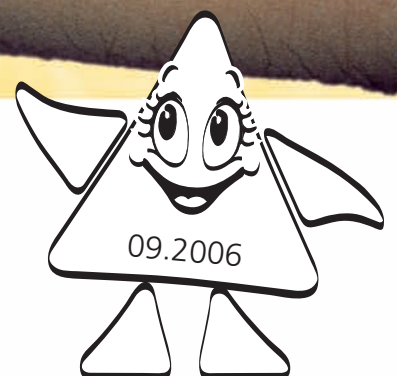
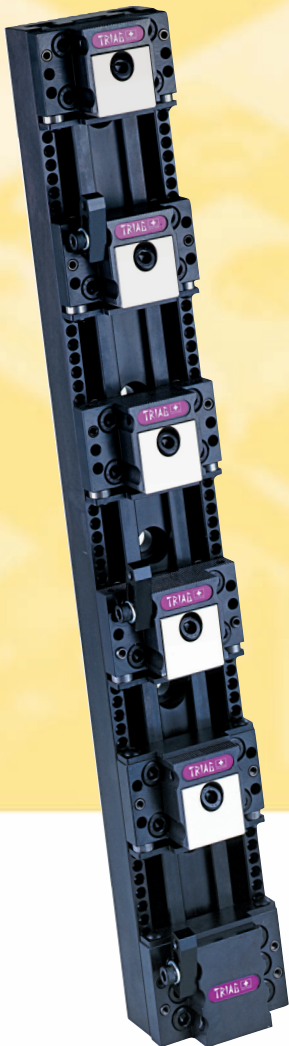
TRIAG[®]

*compact*CLAMP

Mehrfachspannsystem

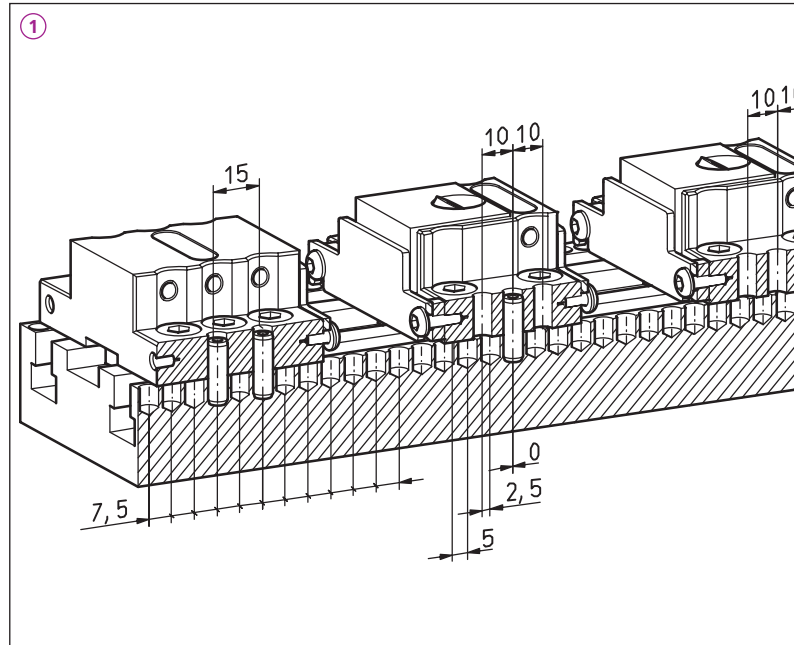
Multiple workholding system

Systeme de serrage multiple

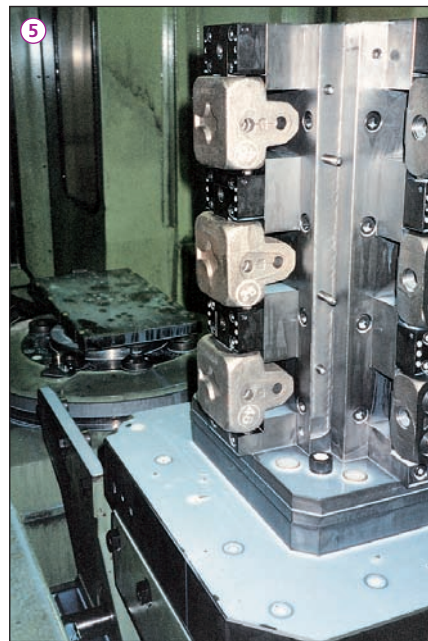


Warum / Why / Pourquoi **compactCLAMP**

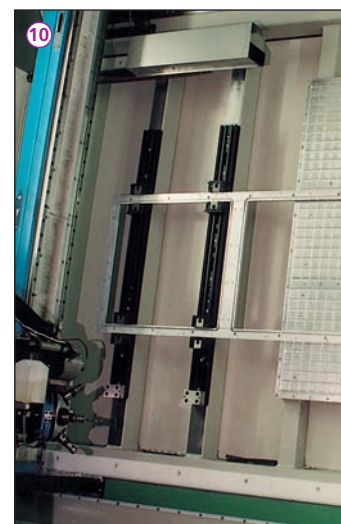
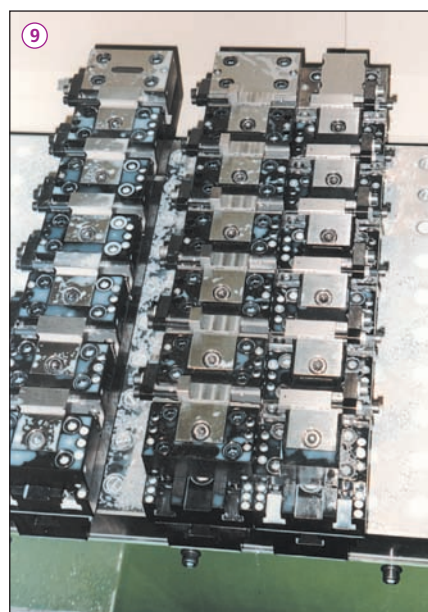
1. flexibelstes Mehrfachspannsystem der Welt.
2. Präzises Positionieren durch patentiertes Nonius-system. Positionierschritt 2,5 mm, Backenhub 4 mm (1).
3. Einfaches Aufbauen von Sondervorrichtungen auf unseren Basisschienen (2).
4. Einfaches Befestigen von Sonderbacken in den T-Nuten (3, 12).
5. Spannen unförmiger Werkstücke (4).
6. Spannmodule können auf einfache Weise im individuellen Vorrichtungsbau eingesetzt werden (5, 6, 7, 8).
7. 3-Seitenbearbeitung ab 20 mm möglich.
8. Viele kleine (9) wie auch sehr grosse (10) Werkstücke spannen.
9. Grosses Sortiment an Zubehör.
10. Niederzug und dank Modularität des Systems parallele Linearspannung.
11. Höchste Spanndichte auf gegebener Arbeitsfläche (11).



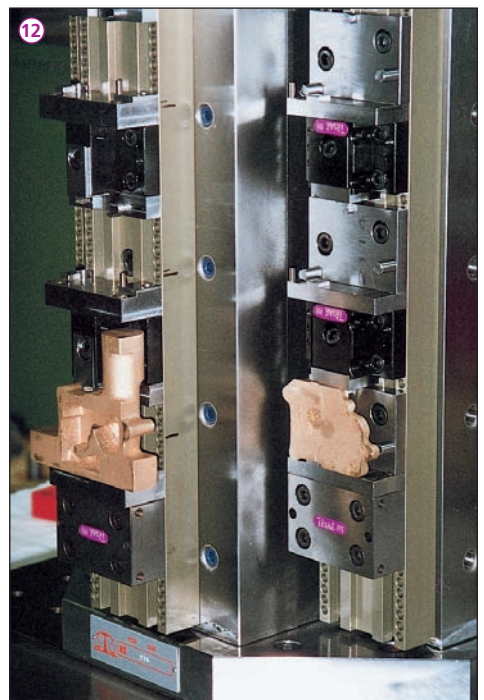
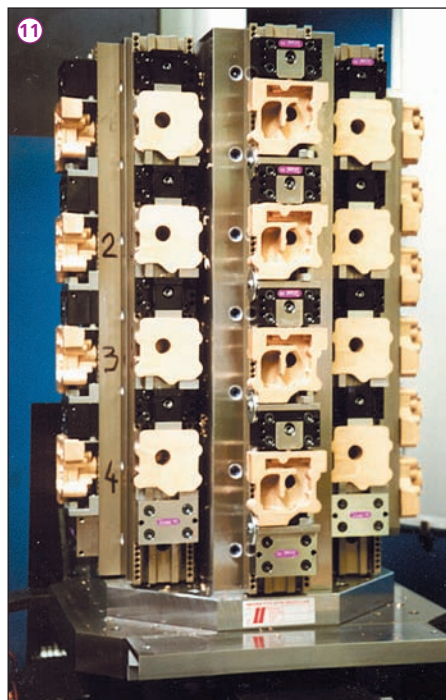
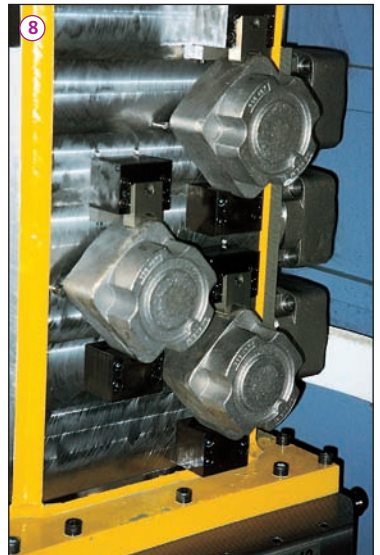
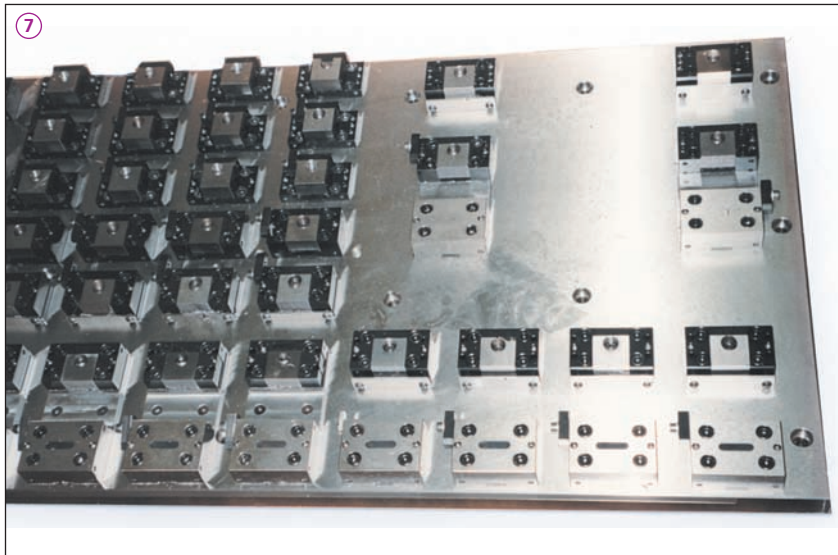
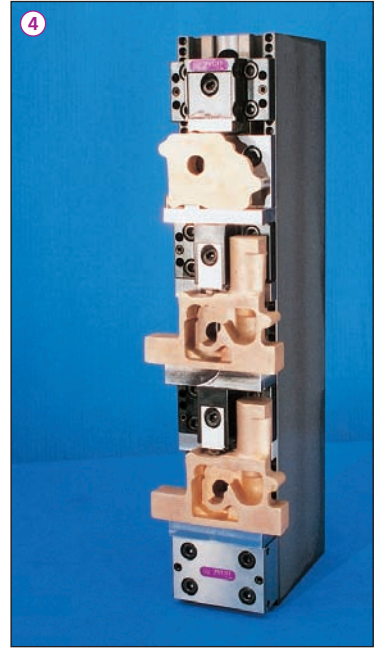
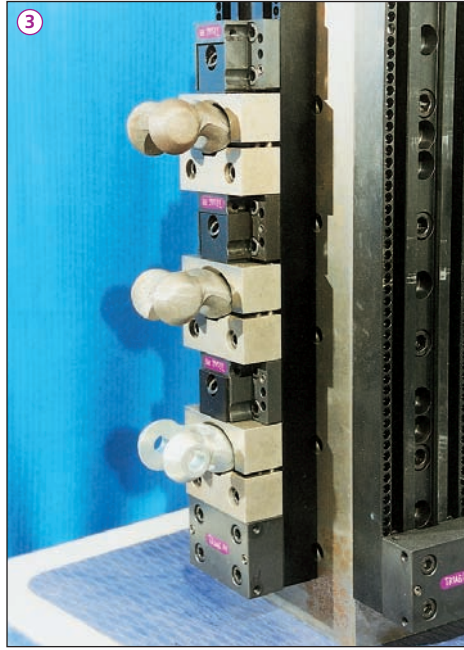
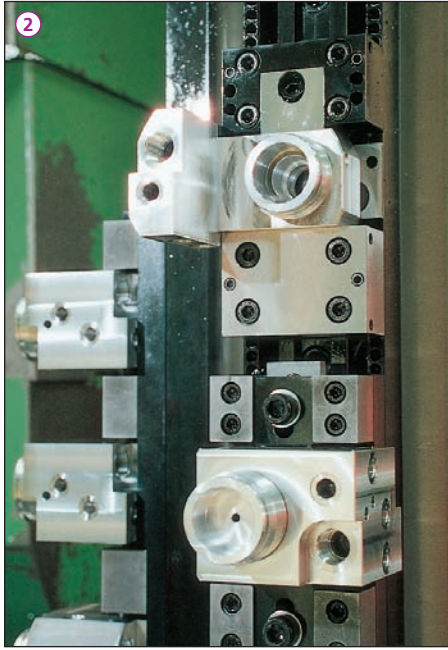
1. *the world's most flexible multiple workholding system.*
2. *Accurate positioning by patented vernier effect. Positioning increment 2,5mm, stroke of jaw 4mm (1).*
3. *Special devices are easily set up on our base rail (2).*
4. *Special jaws are easily mounted on T-slots (3, 12).*
5. *Workholding of odd shaped parts (4).*
6. *Vice modules can easily be used as components of dedicated fixtures (5, 6, 7, 8).*
7. *Three sided machining possible from 20 mm up.*
8. *Workholding several small parts (9) as well as few large parts (10) in the same system due to modularity.*
9. *Wide variety of accessories.*
10. *Pull down and parallel linear action.*
11. *Highest workholding density per given machine envelope (11).*



1. Le système de serrage le plus flexible au monde.
2. L'effet de la division de vernier permet le positionnement précis, pas de positionnement 2.5mm, cours du mors 4mm (1).
3. Montage simple des posages individuelles sur nos rails de base (2).
4. Des mors spéciaux sont facilement montés dans les rainures à T (3, 12).
5. Serrage des pièces irréguliers (4).
6. Les modules de serrage se laissent facilement intégrer dans les posages individuelles (5, 6, 7, 8).
7. Possibilité de travailler sur 3 côtés à partir de 20 mm
8. Modularité permet de serrer beaucoup des petite pièces (9) aussi bien que des pièces plus larges (10).
9. Grand choix des accessoires.
10. Mors abaissant et serrage linéaire parallèle.
11. Plus grande densité de serrage sur l'enveloppe donnée de la machine (11).



compactCLAMP



System System Système	
P	Power Clamp
C	Compact Clamp
M	Micro Clamp
V	Vorrichtungsbaumodule <i>workholding modules for dedicated fixtures</i> module de serrage pour gabarits individuels

bei Anschlagmodulen <i>for end module / pour module d'appui</i>	
N	nitriert <i>nitrated</i> nituré
D	durchgehärtet <i>through hardened</i> trempé
bei Spannmodulen <i>for vice modules / pour module de serrage</i>	
1 2 4	Anzahl Spannbacken <i>number of jaws</i> nombre de mors
-	keine Spannbacke <i>no clamping jaw</i> sans mors de serrage

C

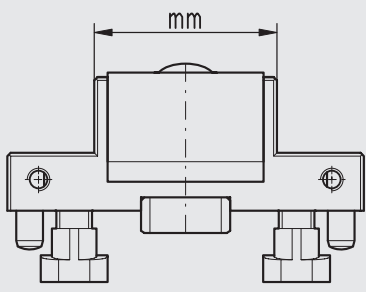
S

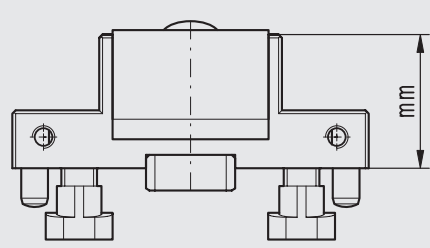
1

R

Modultyp <i>type of module / type de module</i>	
A	Anschlagmodul <i>end module</i> module d'appui
S	Spannmodul <i>vice module</i> module de serrage
T	Trägermodul <i>supporting module</i> module support

Anschlagfläche der Module <i>datum face / surface d'appui</i>	
F	Anschlagfläche glatt <i>datum face flat</i> face d'appui lisse
R	Anschlagfläche geriffelt <i>datum face double serrated</i> face d'appui striée en croix
D	eine Seite glatt, eine Seite geriffelt <i>one face flat, one face double serrated</i> une face lisse, une face striée en croix
G	Anschlagfläche gerillt <i>datum face serrated</i> face d'appui strié
X	spezielle Ausführung <i>special execution</i> exécution spéciale

Modulnutzbreite <i>module clamping width / largeur utile du module</i>	
19	
20	
22	
24	
25	
26	
35	
38	
39	
41	
48	
60	
61	
80	
85	
94	

Modulnutzhöhe <i>module clamping height / hauteur utile du module</i>	
14	
20	
25	
30	
34	
35	
49	
50	

80

N

30

B36

Backenhub <i>stroke of clamping jaw / cours du mors de serrage</i>	
N	Niederzug <i>pull down</i> abaissant
L	linear parallel <i>linear parallel</i> linéaire parallèle
-	ohne Spannbacke <i>no clamping jaw</i> sans mors de serrage

Spannbackentyp <i>type of clamping jaw / type du mors de serrage</i>	
B01 - B99	Spannbacke <i>clamping jaw</i> mors de serrage
-01 - -99	Modul ohne Zubehör <i>module without accessories</i> module sans accessoires
X30 X50 X60	Trägermodullänge <i>Supporting module length</i> longueur du module support

Spannkraft und Drehmoment Workholding force and Torque Force de serrage et couple de torsion

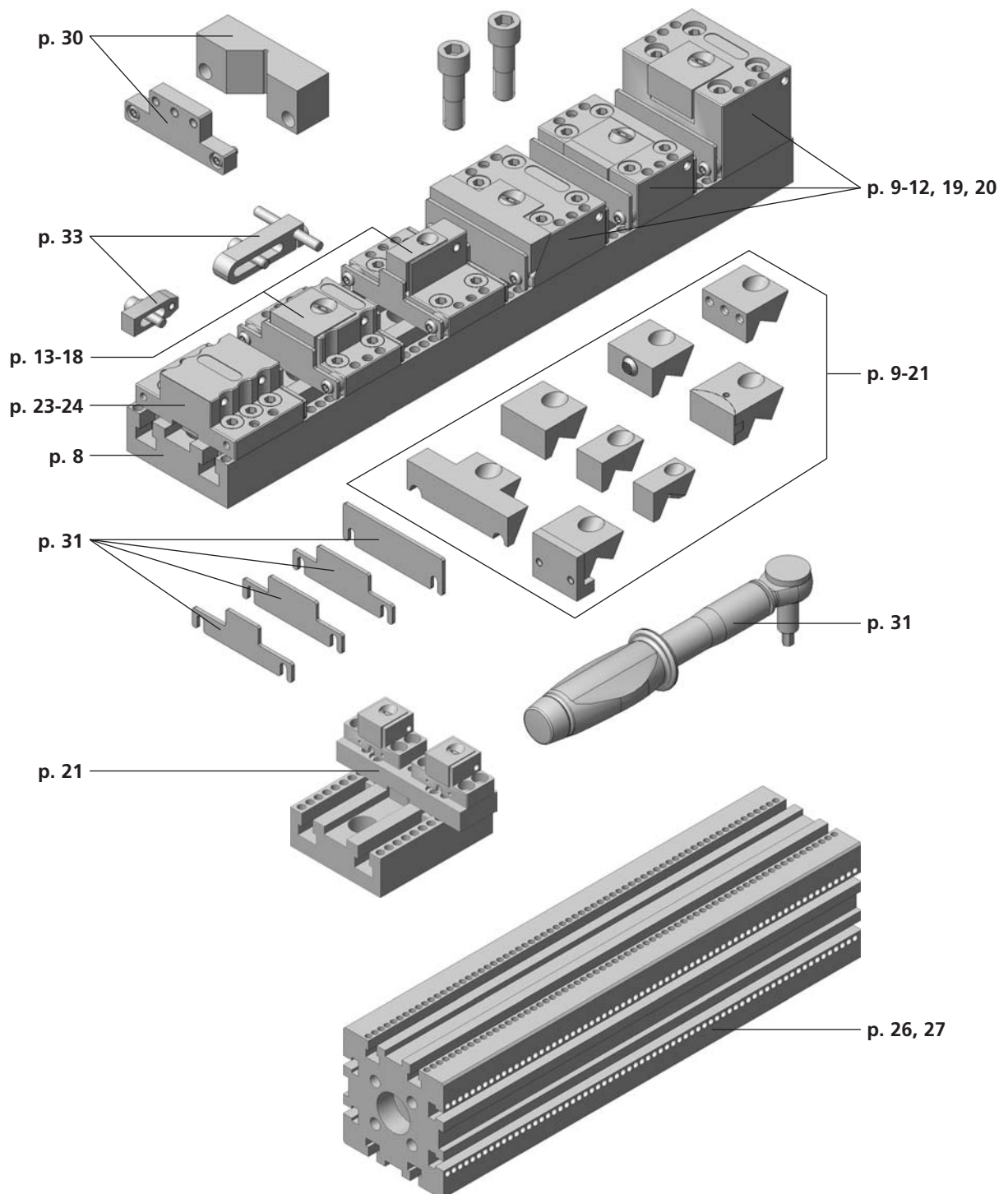
compactCLAMP

Spannkraft / Workholding force / Force de serrage

Drehmoment / Torque / Couple de torsion

	daN	(lb)	t	Nm	(lb/ft)
M8	410	900	0.41	4	3
	490	1080	0.49	5	3.7
	560	1200	0.56	6	4.4
	660	1450	0.66	7	5.2
	730	1600	0.73	8	5.9
	810	1790	0.81	9	6.6
	900	1980	0.90	10	7.4
	1370	3020	1.37	15	11.1
	1810	4000	1.81	20	14.8
	2100	4600	2.10	25	18.4

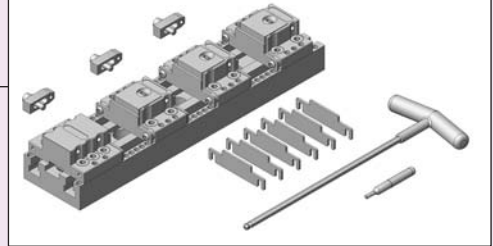
Inhaltsverzeichnis / Index / Contenu



CC Set 1 A / B / C / D (350 mm)

A.	1x	CCBA 40-50-350	ALU	B.	1x	CCBA 40-50-350	ALU
	1x	CAND 41-30			1x	CAND 80-30	
	3x	CS1R 41N30 B60			3x	CS1R 80N30 B60	
	3x	FA 1240			3x	FA 1240	
	6x	CCU 20083			6x	CCU 20082	
	6x	CCU 25083			6x	CCU 25082	
C.	1x	CCB 40-50-350		D.	1x	CCB 40-50-350	
	1x	CAND 41-30			1x	CAND 80-30	
	3x	CS1R 41N30 B60			3x	CS1R 80N30 B60	
	3x	FA 1240			3x	FA 1240	
	6x	CCU 20083			6x	CCU 20082	
	6x	CCU 25083			6x	CCU 25082	
1x	026-13168		1x	026-13168			

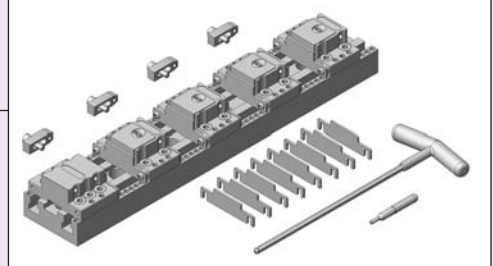
CC Set 1 A...



CC Set 2 A / B / C / D (450 mm)

A.	1x	CCBA 40-50-450	ALU	B.	1x	CCBA 40-50-450	ALU
	1x	CAND 41-30			1x	CAND 80-30	
	4x	CS1R 41N30 B60			4x	CS1R 80N30 B60	
	4x	FA 1240			4x	FA 1240	
	8x	CCU 20083			8x	CCU 20082	
	8x	CCU 25083			8x	CCU 25082	
C.	1x	CCB 40-50-450		D.	1x	CCB 40-50-450	
	1x	CAND 41-30			1x	CAND 80-30	
	4x	CS1R 41N30 B60			4x	CS1R 80N30 B60	
	4x	FA 1240			4x	FA 1240	
	8x	CCU 20083			8x	CCU 20082	
	8x	CCU 25083			8x	CCU 25082	
1x	026-13168		1x	026-13168			

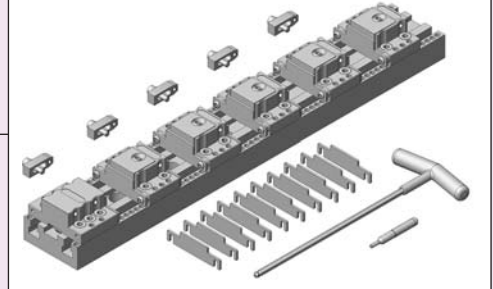
CC Set 2 A...



CC Set 3 A / B / C / D (550 mm)

A.	1x	CCBA 40-50-550	ALU	B.	1x	CCBA 40-50-550	ALU
	1x	CAND 41-30			1x	CAND 80-30	
	5x	CS1R 41N30 B60			5x	CS1R 80N30 B60	
	5x	FA 1240			5x	FA 1240	
	10x	CCU 20083			10x	CCU 20082	
	10x	CCU 25083			10x	CCU 25082	
C.	1x	CCB 40-50-550		D.	1x	CCB 40-50-550	
	1x	CAND 41-30			1x	CAND 80-30	
	5x	CS1R 41N30 B60			5x	CS1R 80N30 B60	
	5x	FA 1240			5x	FA 1240	
	10x	CCU 20083			10x	CCU 20082	
	10x	CCU 25083			10x	CCU 25082	
1x	026-13168		1x	026-13168			

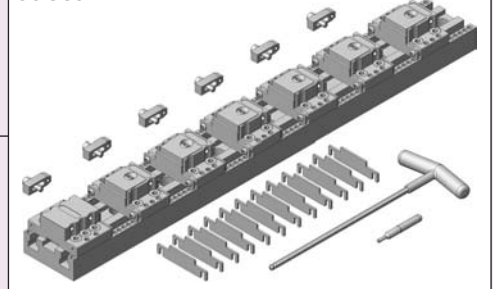
CC Set 3 A...



CC Set 4 A / B / C / D (650 mm)

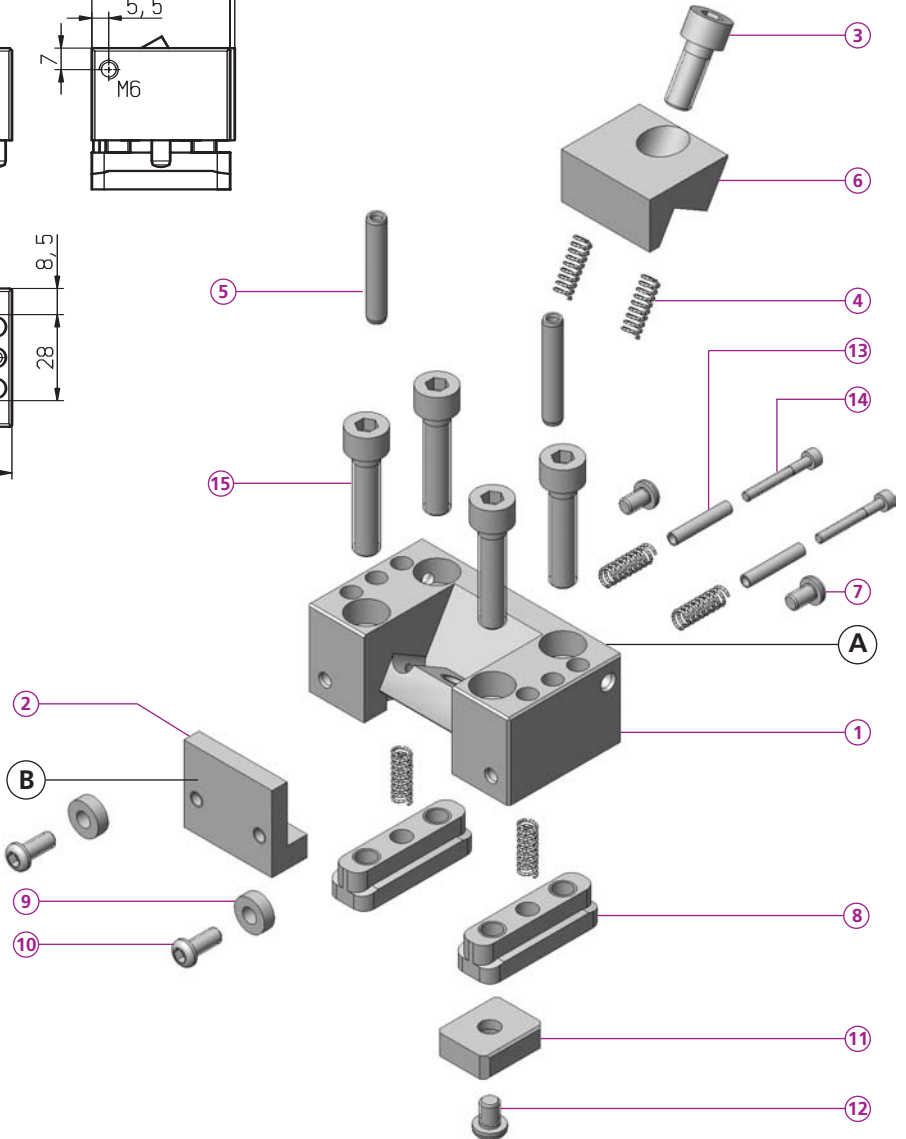
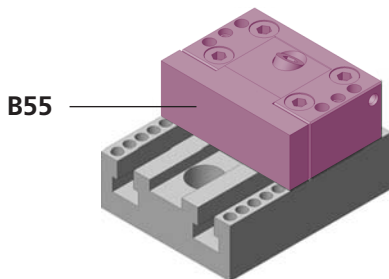
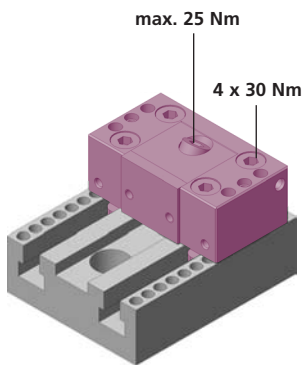
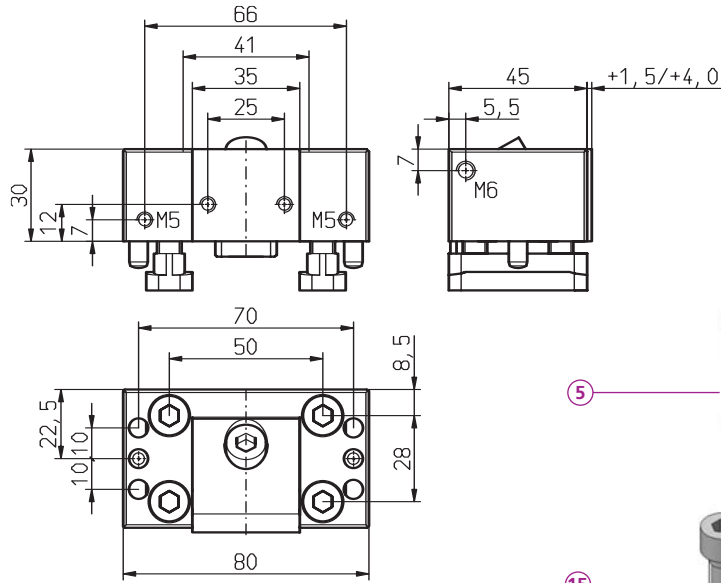
A.	1x	CCBA 40-50-650	ALU	B.	1x	CCBA 40-50-650	ALU
	1x	CAND 41-30			1x	CAND 80-30	
	6x	CS1R 41N30 B60			6x	CS1R 80N30 B60	
	6x	FA 1240			6x	FA 1240	
	12x	CCU 20083			12x	CCU 20082	
	12x	CCU 25083			12x	CCU 25082	
C.	1x	CCB 40-50-650		D.	1x	CCB 40-50-650	
	1x	CAND 41-30			1x	CAND 80-30	
	6x	CS1R 41N30 B60			6x	CS1R 80N30 B60	
	6x	FA 1240			6x	FA 1240	
	12x	CCU 20083			12x	CCU 20082	
	12x	CCU 25083			12x	CCU 25082	
1x	026-13168		1x	026-13168			

CC Set 4 A...



ALU Nur für leichte Arbeiten empfohlen!
 Suitable only for light duty work!
 Recommandé seulement pour l'usinage légère!

CS1R/F 80L30 -51 *Linear compact*CLAMP



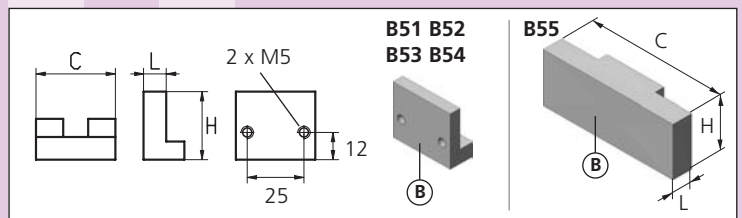
Bestellbeispiel / ordering example / exemple de commande: CS1R 80L30 B51

CS1F 80L30 -51

CS1R 80L30 -51

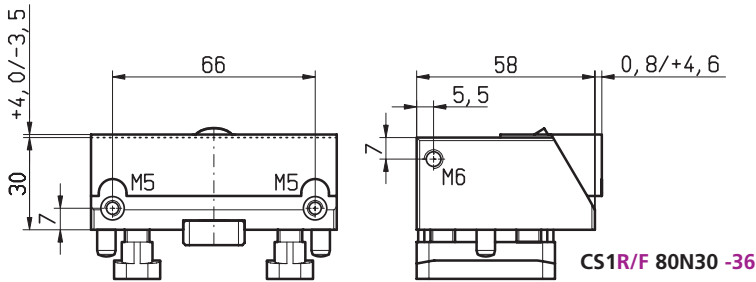
- ① 1x CS1R 80L30 -51
- ② 1x _____
- ③ 1x M8x20 ISO 4762
- ④ 6x FED 0618
- ⑤ 2x CCBO 0801
- ⑥ 1x B78
- ⑦ 2x M5x8 ISO 7380
- ⑧ 2x CCNUT 2845
- ⑨ 2x CCD 004
- ⑩ 2x M5x12 ISO 7380
- ⑪ 1x CCGU 2025
- ⑫ 1x M6x8 ISO 7380
- ⑬ 2x CCD 422
- ⑭ 2x M3x25 ISO 4762
- ⑮ 4x M8x35 ISO 4762
- kg 0.90 (B55 = 1.060)

	B51	B52	B53	B54	B55
①	35	35	35	35	80
②	30	30	30	35	30
③	6	6	10	10	11.5
④	-	-	-	-	-
⑤	-	-	-	-	-
⑥	56 HRC	56 HRC	*	*	*

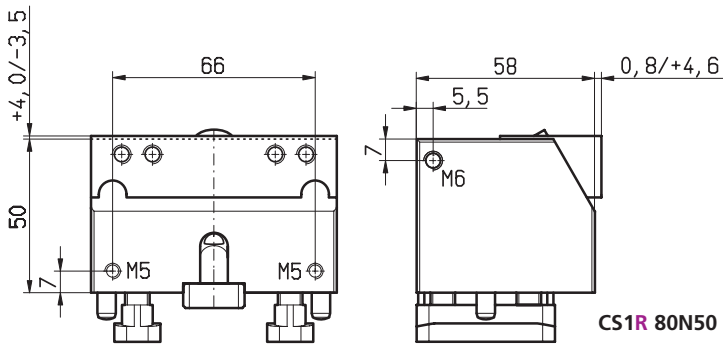


CS1R 80N50 -36
CS1R/F 80N30 -36

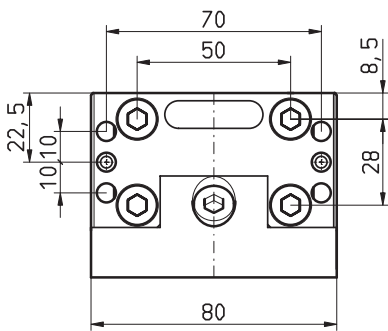
compactCLAMP



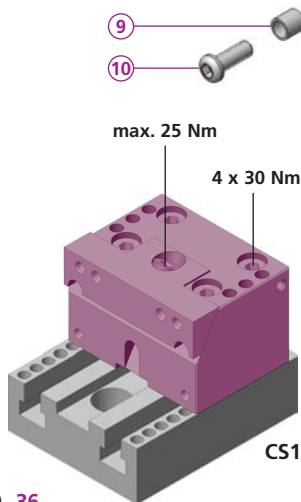
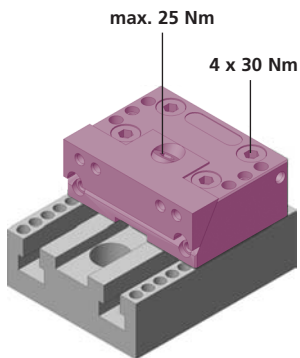
CS1R/F 80N30 -36



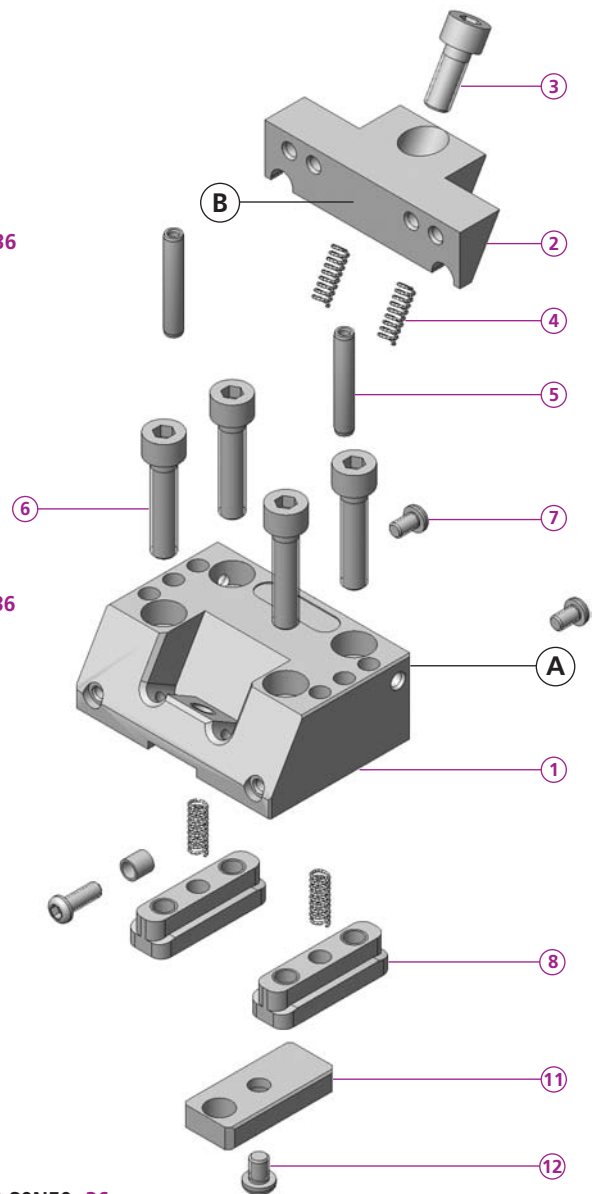
CS1R 80N50 -36



CS1R 80N30 -36



CS1R 80N50 -36



Bestellbeispiel / ordering example / exemple de commande: CS1R 80N30 B36

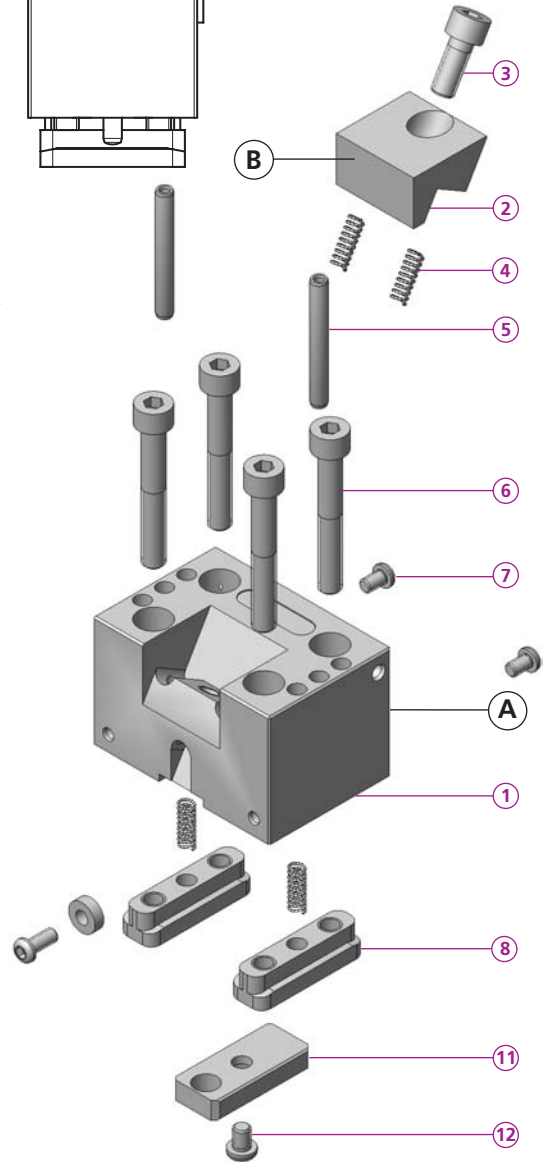
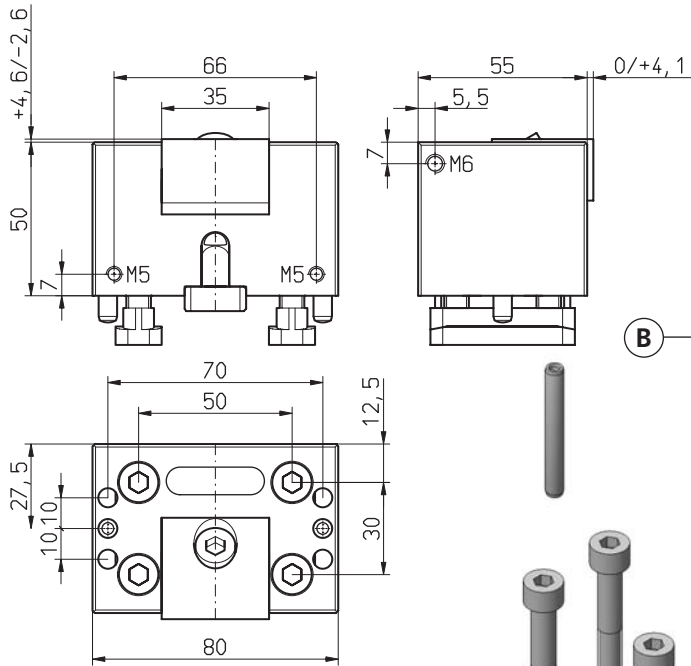
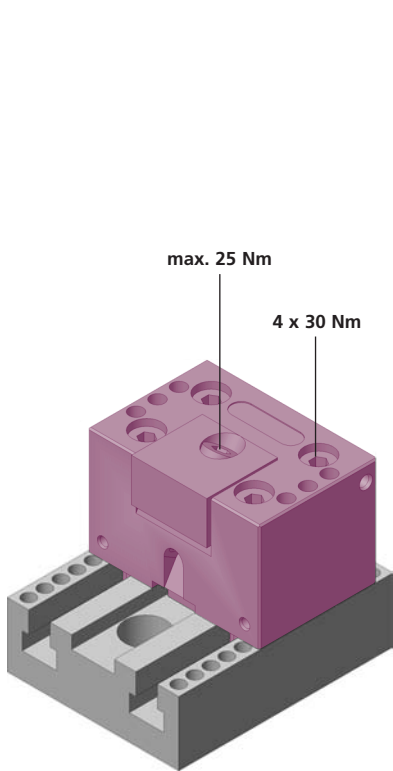
CS1F 80N30 -36	
CS1R 80N30 -36	
1	1x CS1R 80N30 -36
2	1x _____
3	1x M8x20 ISO 4762
4	4x FED 0618
5	2x CCBO 0801
6	4x M8x35 ISO 4762
7	2x M5x8 ISO 4762
8	2x CCNUT 2845
9	2x CCD 007
10	2x M5x16 ISO 4762
11	1x CCGU 2044
12	1x M6x8 ISO 7380
kg	1.20

CS1R 80N50 -36	
1	1x CS1R 80N50 -36
2	1x _____
3	1x M8x20 ISO 4762
4	4x FED 0618
5	2x CCBO 0803
6	4x M8x55 ISO 4762
7	2x M5x8 ISO 4762
8	2x CCNUT 2845
9	2x PCD 005
10	2x M5x12 ISO 4762
11	1x CCGU 2044
12	1x M6x8 ISO 7380
kg	1.90

B			
C	80	80	80
H	20	20	20
L	19	19	19
D	9	9	9
Ø	12	12	12
i	HV 700x 0.2mm	HV 700x 0.2mm	*

B36 B37 B38

* = weich / soft / doux



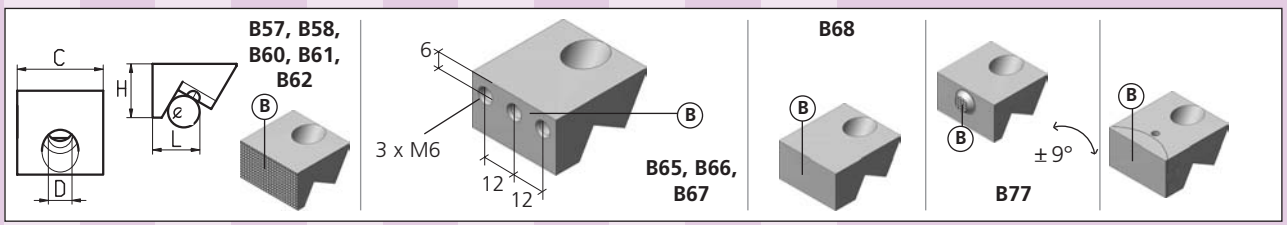
CS1R 80N50 -60

- ① 1x CS1R 80N30 -60
- ② 1x _____
- ③ 1x M8x20 ISO 4762
- ④ 4x FED 0618
- ⑤ 2x CCBO 0803
- ⑥ 4x M8x55 ISO 4762
- ⑦ 2x M5x8 ISO 7380
- ⑧ 2x CCNUT 3055F
- ⑨ 2x CCD 004
- ⑩ 2x M5x12 ISO 7380
- ⑪ 1x CCGU 2044
- ⑫ 1x M6x8 ISO 7380

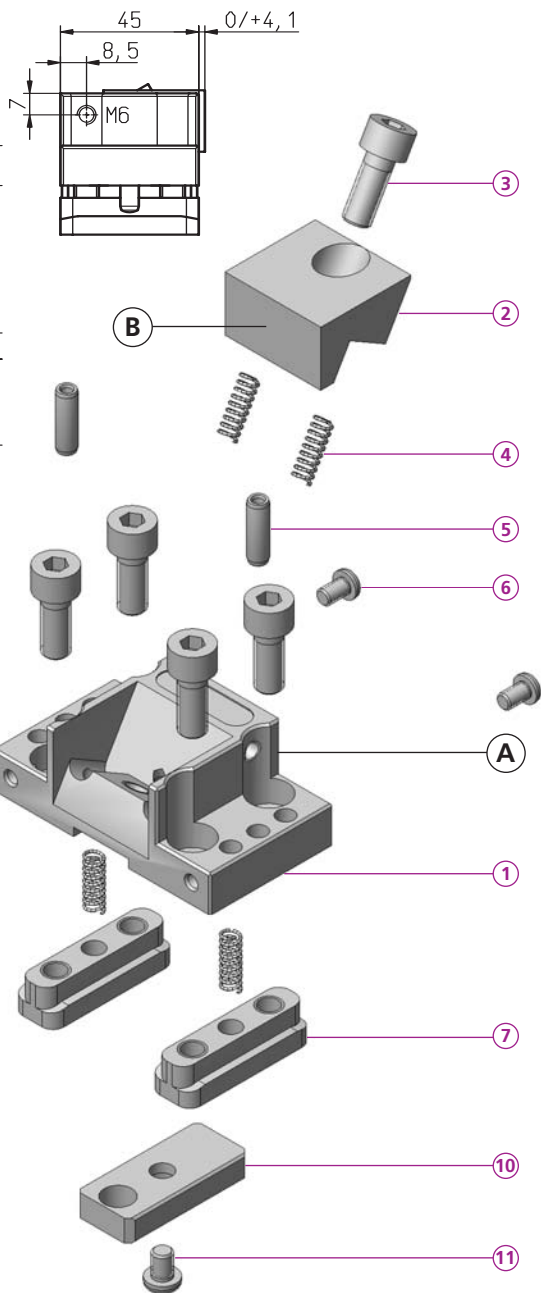
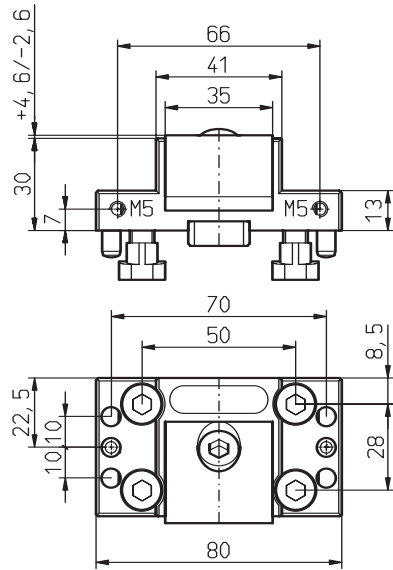
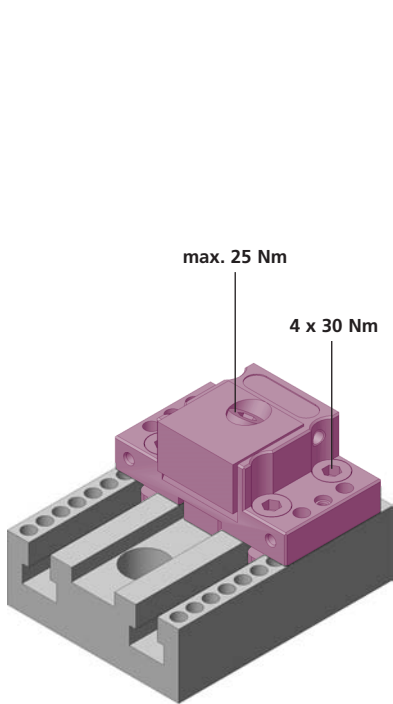
kg 1.80

Bestellbeispiel / ordering example / exemple de commande: CS1R 80N50 B60

	B57	B58	B60	B61	B62	B65	B66	B67	B68	B77	B79
Ⓒ	35	35	35	35	35	35	35	35	35	35	35
Ⓗ	20	20	20	20	20	20	20	20	20	20	20
Ⓕ	19	24	19	19	19	19	19	24	26	22	25
Ⓓ	9	9	9	9	9	9	9	9	9	9	9
⓪	12	12	12	12	12	12	12	12	12	12	12
⓲	ALU *	ALU *	56 HRc	56 HRc	*	56 HRc	56 HRc	56 HRc	*	56 HRc	HV700x 0.2mm



* = weich / soft / doux



CS1F 41N30 -60

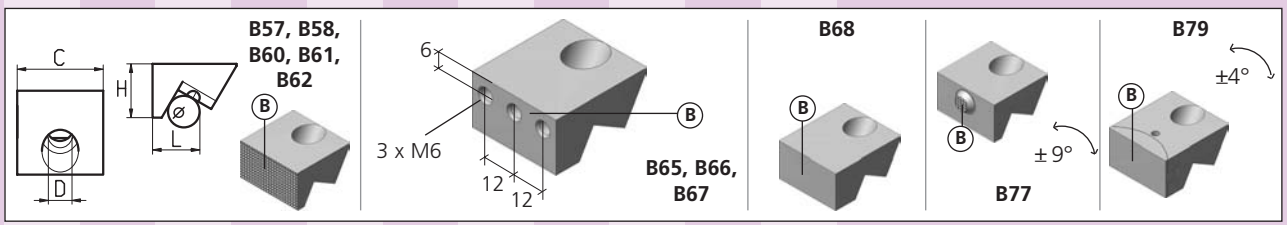
CS1R 41N30 -60

- 1 1x CS1R 41N30 -60
- 2 1x
- 3 5x M8x20 ISO 4762
- 4 4x FED 0618
- 5 2x CCBO 0802
- 6 2x M5x8 ISO 7380
- 7 2x CCNUT 2845
- 8 2x CCD 004
- 9 2x M5x12 ISO 7380
- 10 2x CCGU 2044
- 11 1x M6x8 ISO 7380

kg 0.70

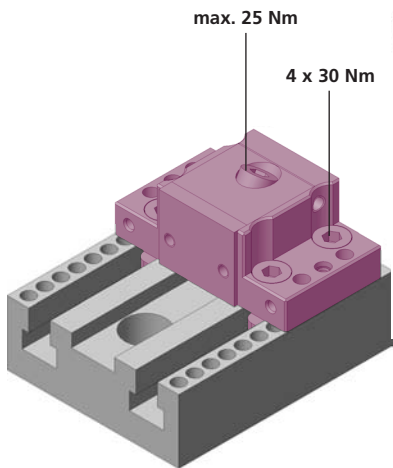
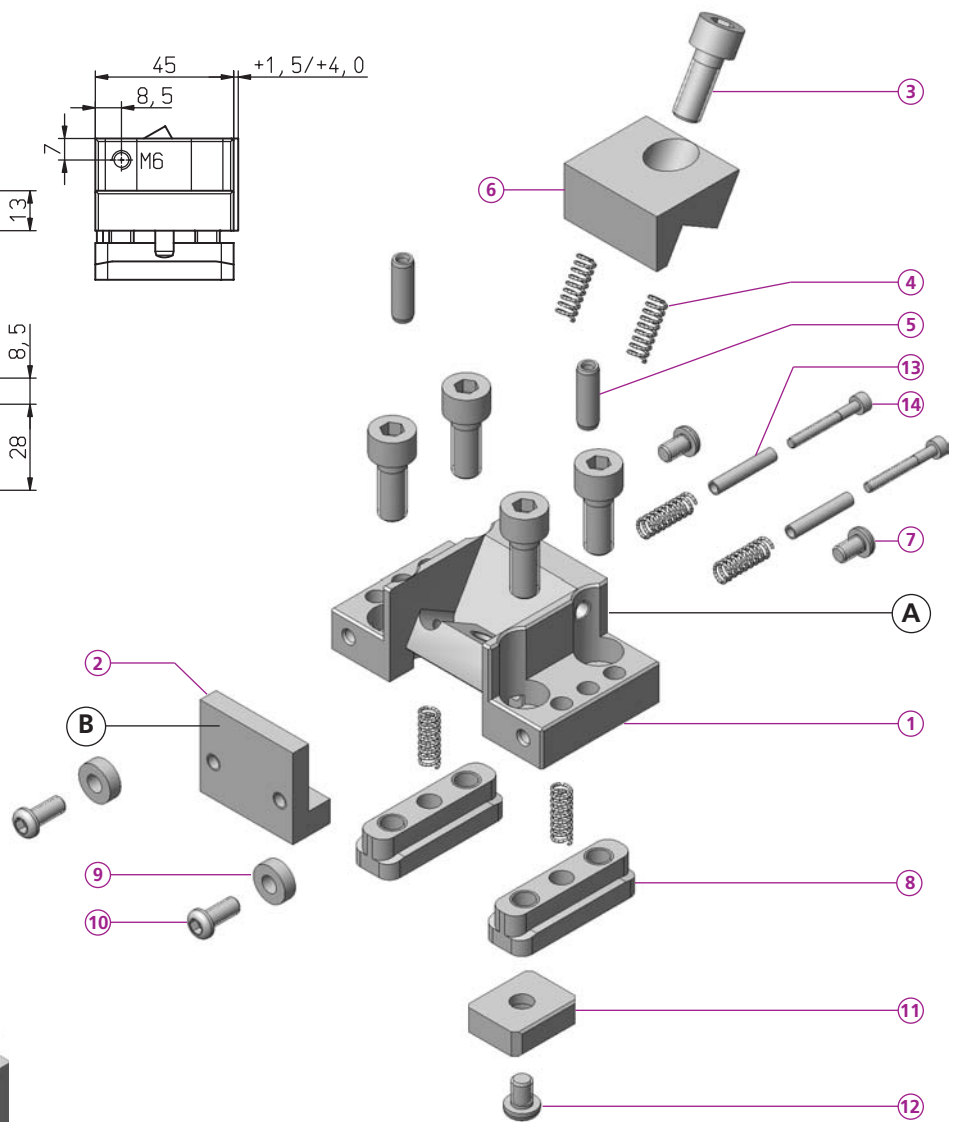
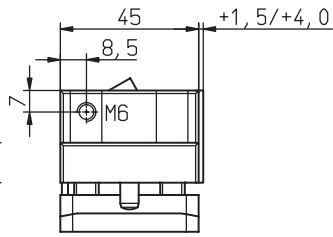
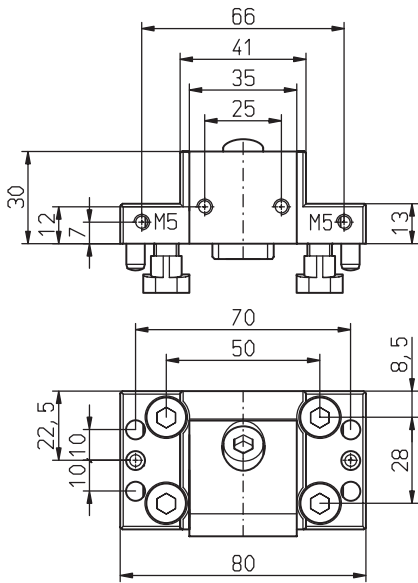
Bestellbeispiel / ordering example / exemple de commande: CS1R 41N30 B60

	B57	B58	B60	B61	B62	B65	B66	B67	B68	B77	B79
C	35	35	35	35	35	35	35	35	35	35	35
H	20	20	20	20	20	20	20	20	20	20	20
L	19	24	19	19	19	19	19	24	26	22	25
D	9	9	9	9	9	9	9	9	9	9	9
e	12	12	12	12	12	12	12	12	12	12	12
i	ALU *	ALU *	56 HRc	56 HRc	*	56 HRc	56 HRc	56 HRc	*	56 HRc	HV700x 0.2mm



* = weich / soft / doux

CS1R/F 41L30 -51 *Linear compactCLAMP*



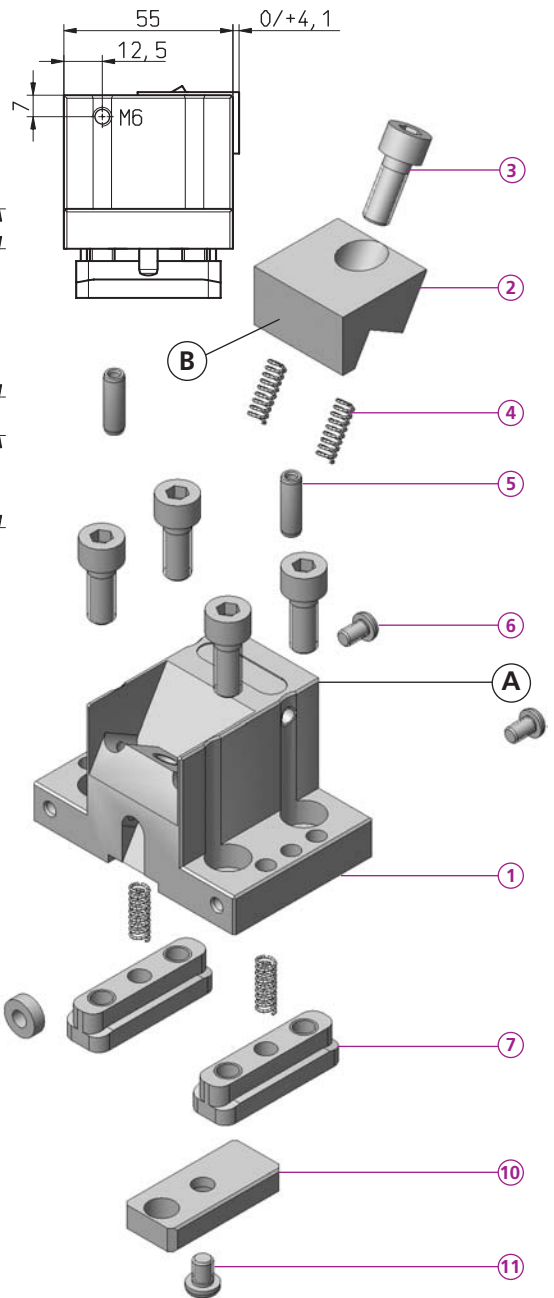
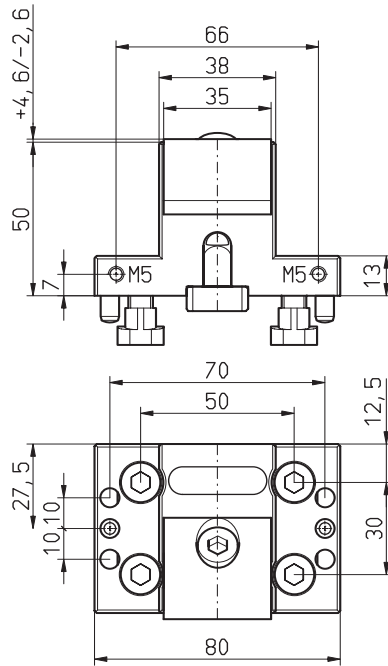
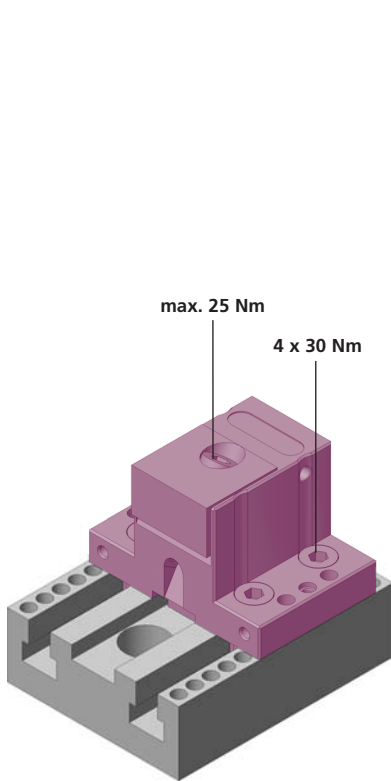
Bestellbeispiel / ordering example / exemple de commande: CS1R 41L30 B51

	A	B	B51	B52	B53	B54	B55
CS1F 41L30 -51							
CS1R 41L30 -51							
1	1x CS1R 41L30 -51						
2	1x						
3	5x M8x20 ISO 4762						
4	6x FED 0618						
5	2x CCBO 0802						
6	1x B78						
7	2x M5x8 ISO 7380						
8	2x CCNUT 2845						
9	2x CCD 004						
10	2x M5x12 ISO 7380						
11	1x CCGU 2025						
12	1x M6x8 ISO 7380						
13	2x CCD 422						
14	2x M3x25 ISO 4762						
kg	0.70						

	C	H	L	D	o	i
B51	35	30	6	-	-	56 Hrc
B52	35	30	6	-	-	56 Hrc
B53	35	30	10	-	-	*
B54	35	35	10	-	-	*
B55	80	30	11.5	-	-	*

**B51 B52
B53 B54**

B55



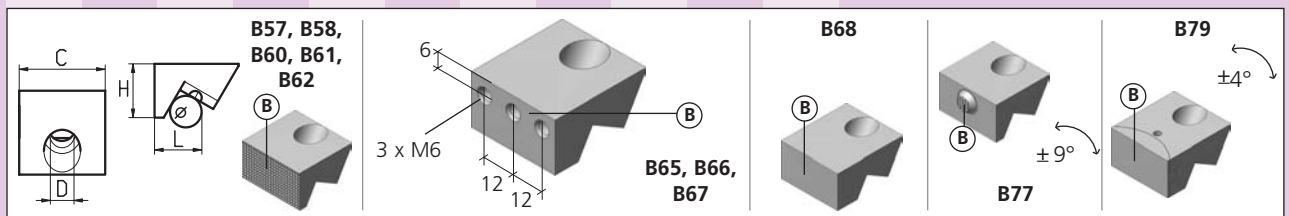
CS1R 38N50 -60

- ① 1x CS1R 38N50 -60
- ② 1x —
- ③ 5x M8x20 ISO 4762
- ④ 4x FED 0618
- ⑤ 2x CCBO 0802
- ⑥ 2x M5x8 ISO 7380
- ⑦ 2x CCNUT 3055F
- ⑧ 2x CCD 004
- ⑨ 2x M5x12 ISO 7380
- ⑩ 2x CCGU 2044
- ⑪ 1x M6x8 ISO 7380

kg 1.20

Bestellbeispiel / ordering example / exemple de commande: CS1R 38N50 B60

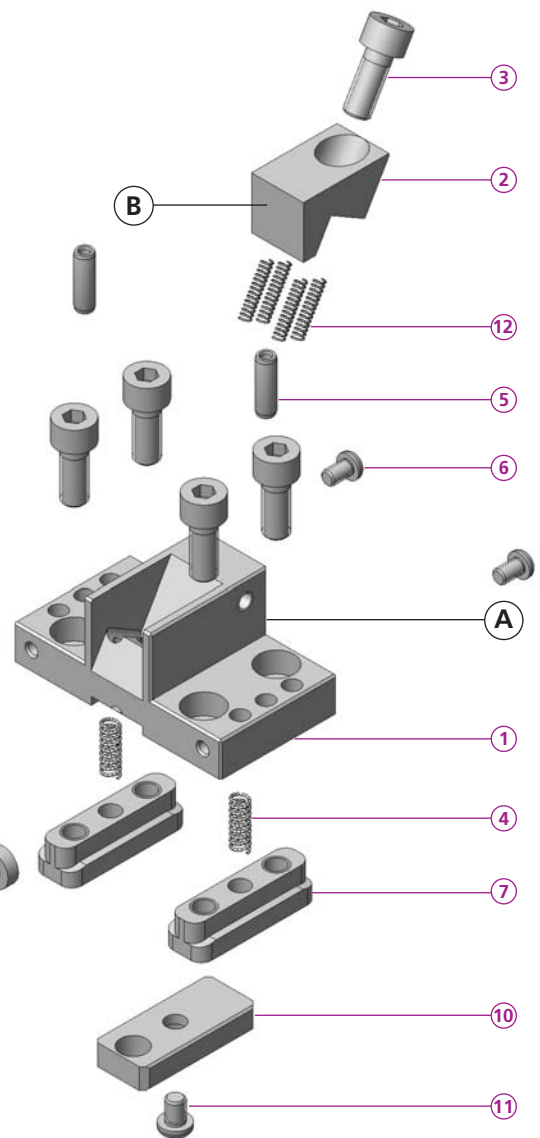
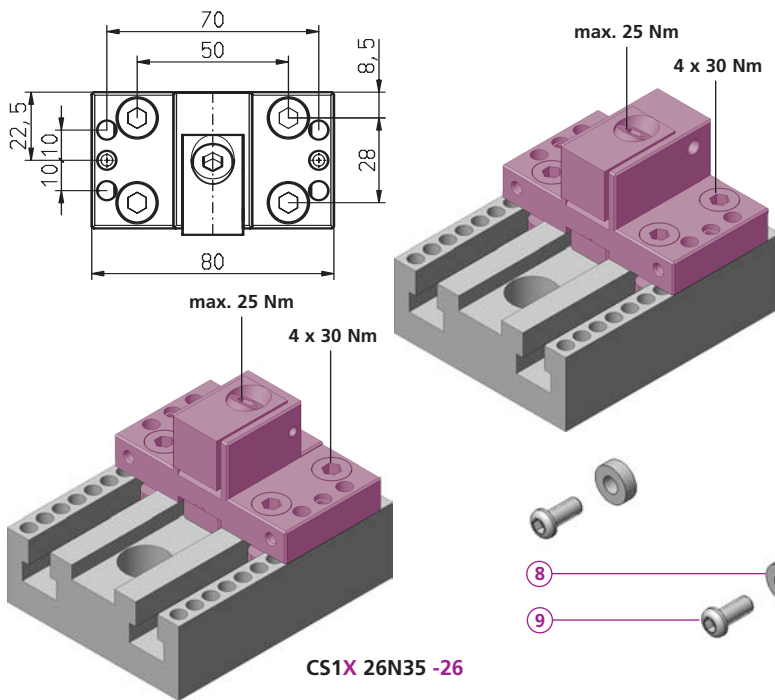
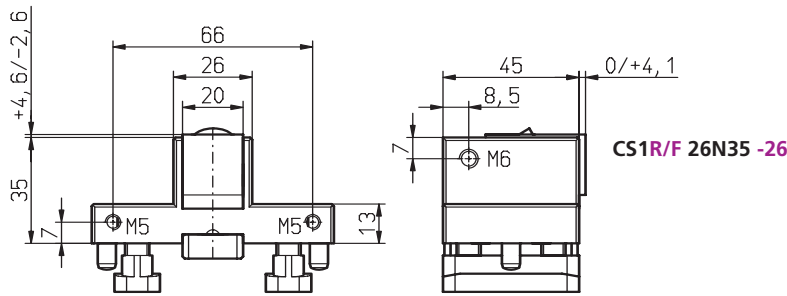
	B57	B58	B60	B61	B62	B65	B66	B67	B68	B77	B79
ⓐ	35	35	35	35	35	35	35	35	35	35	35
ⓑ	20	20	20	20	20	20	20	20	20	20	20
ⓒ	19	24	19	19	19	19	19	24	26	22	25
ⓓ	9	9	9	9	9	9	9	9	9	9	9
ⓔ	12	12	12	12	12	12	12	12	12	12	12
ⓕ	ALU *	ALU *	56 HRc	56 HRc	*	56 HRc	56 HRc	56 HRc	*	56 HRc	HV700x 0.2mm



* = weich / soft / doux

CS1R/F 26N35 -26 CS1X 26N35 -26

compactCLAMP

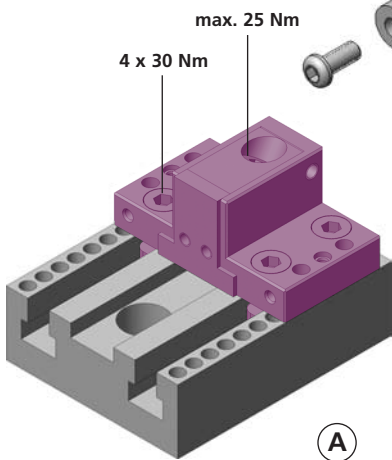
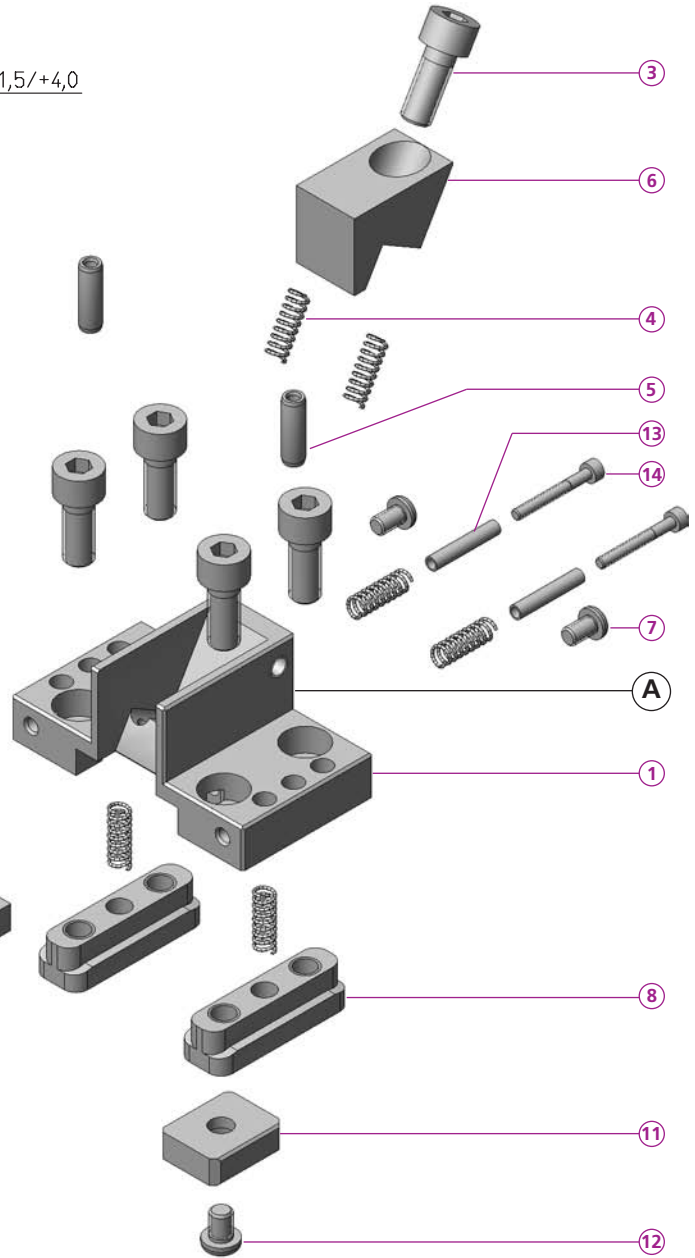
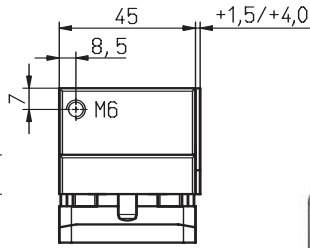
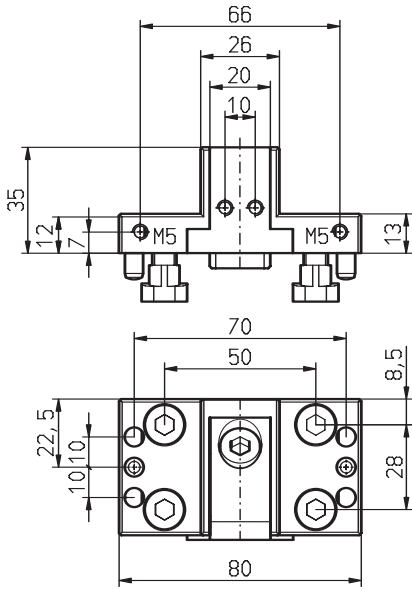


Bestellbeispiel / ordering example / exemple de commande: CS1R 26N35 B26

CS1F 26N35 -26	
CS1R 26N35 -26	
1	1x CS1R 26N35 -26
2	1x
3	5x M8x20 ISO 4762
4	2x FED 0618
5	2x CCBO 0802
6	2x M5x8 ISO 7380
7	2x CCNUT 2845
8	2x CCD 004
9	2x M5x12 ISO 7380
10	1x CCGU 2044
11	1x M6x8 ISO 7380
12	4x FED 0418
kg	0.70

CS1X 26N35 -26	
1	1x CS1X 26N35 -26
2	1x
3	5x M8x20 ISO 4762
4	2x FED 0618
5	2x CCBO 0802
6	2x M5x8 ISO 7380
7	2x CCNUT 2845
8	2x CCD 004
9	2x M5x12 ISO 7380
10	1x CCGU 2044
11	1x M6x8 ISO 7380
12	4x FED 0418
kg	0.65

	B26	B27	B28
C	20	20	20
H	20	20	20
L	19	19	19
D	9	9	9
ø	12	12	12
i	56 HRC	56 HRC	*



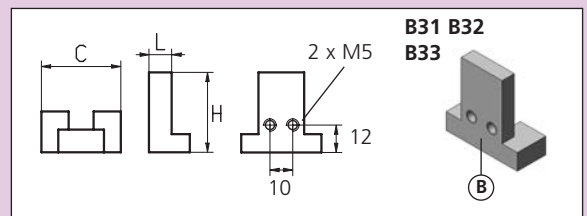
Bestellbeispiel / ordering example / exemple de commande: CS1R 26L35 B31

CS1R 26L35 -30

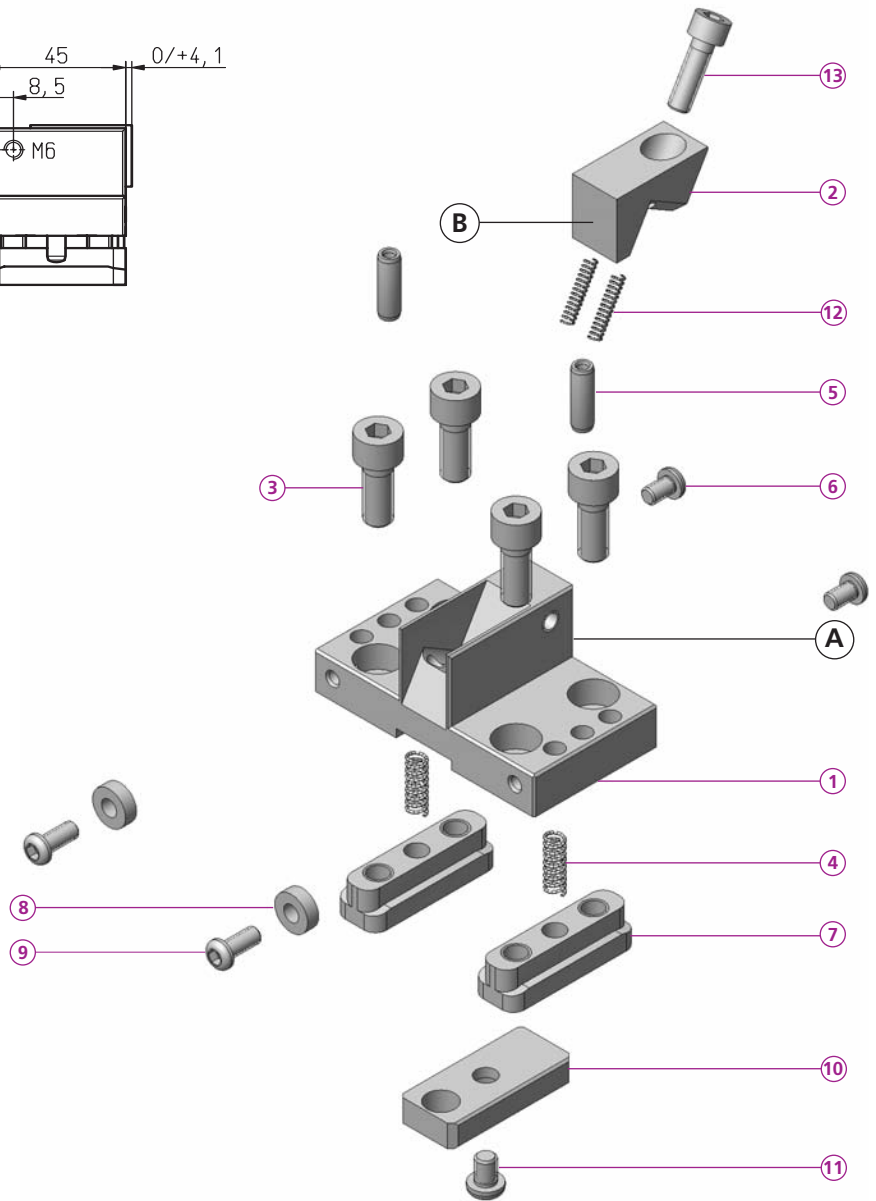
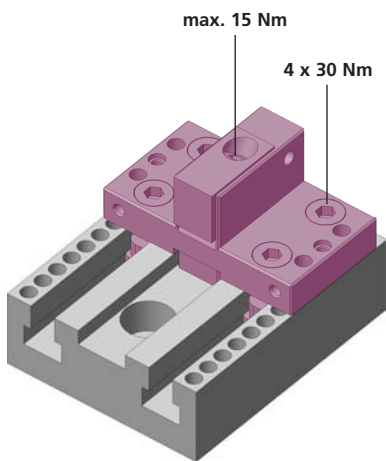
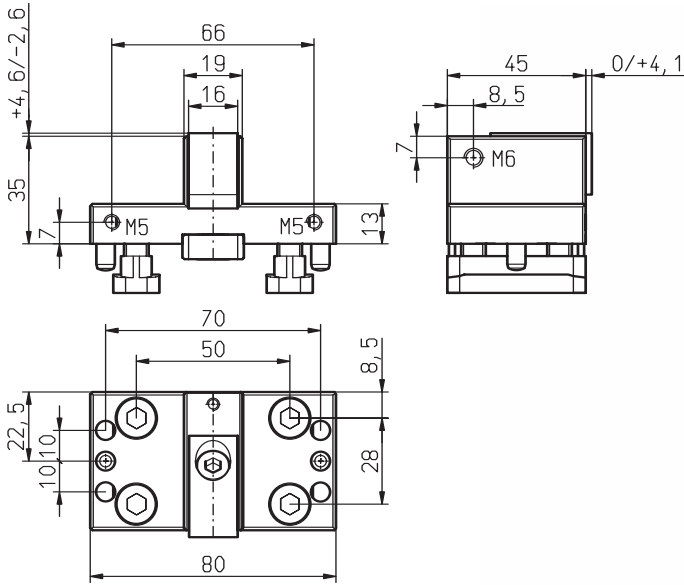
- ① 1x CS1R 26L35 -30
- ② 1x _____
- ③ 5x M8x20 ISO 4762
- ④ 6x FED 0618
- ⑤ 2x CCBO 0802
- ⑥ 1x B30
- ⑦ 2x M5x8 ISO 7380
- ⑧ 2x CCNUT 2845
- ⑨ 2x CCD 004
- ⑩ 2x M5x12 ISO 7380
- ⑪ 1x CCGU 2025
- ⑫ 1x M6x8 ISO 7380
- ⑬ 2x CCD 422
- ⑭ 2x M3x25 ISO 4762

kg 0.58

	B31	B32	B33
③	20	20	20
④	30	30	30
⑥	6	6	6
⑤	-	-	-
⑦	-	-	-
i	56 H Rc	56 H Rc	*



* = weich / soft / doux



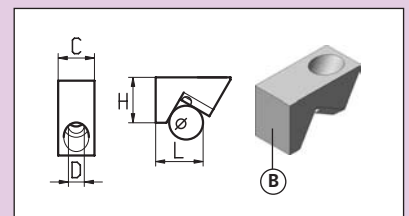
Bestellbeispiel / ordering example / exemple de commande: CS1R 19N35 B20

CS1R 19N35 -20

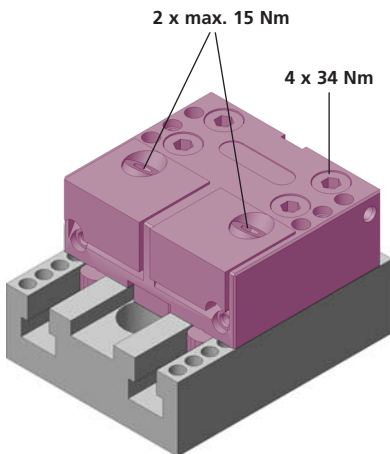
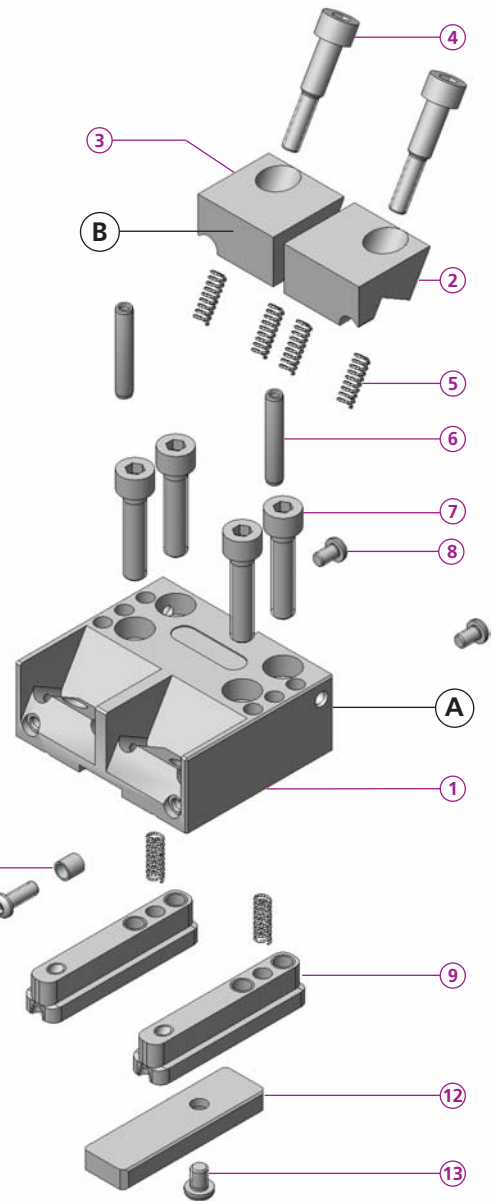
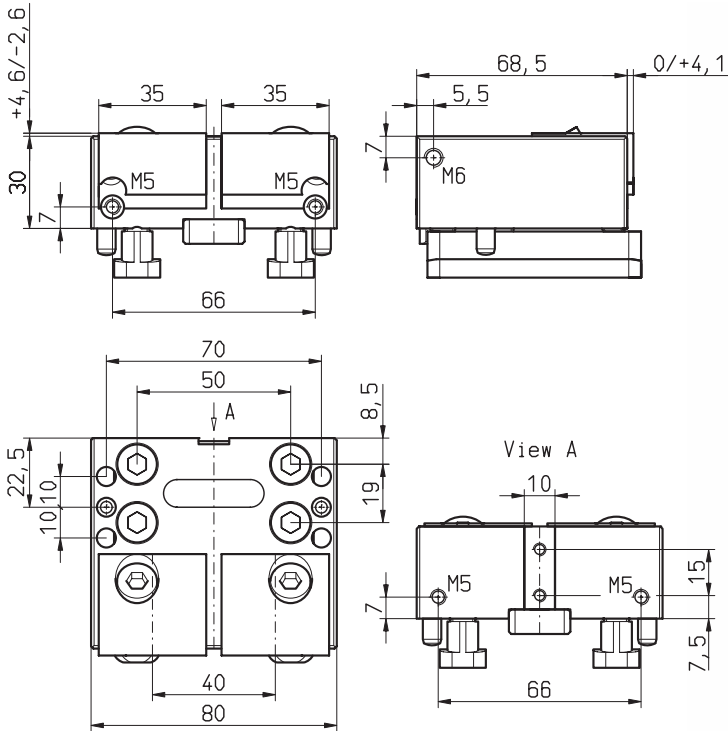
- ① 1x CS1R 19N35 -20
- ② 1x _____
- ③ 4x M8x20 ISO 4762
- ④ 2x FED 0618
- ⑤ 2x CCBO 0802
- ⑥ 2x M5x8 ISO 7380
- ⑦ 2x CCNUT 2845
- ⑧ 2x CCD 004
- ⑨ 2x M5x12 ISO 7380
- ⑩ 1x CCGU 2044
- ⑪ 1x M6x8 ISO 7380
- ⑫ 2x FED 0418
- ⑬ 1x M6x20 ISO 4762

kg 0.60

	B20	B21	B22
③	16	16	16
④	20	20	20
⑤	19	19	19
⑥	6.5	6.5	6.5
⑧	12	12	12
⑨	HV 700x 0.2mm	HV 700x 0.2mm	*

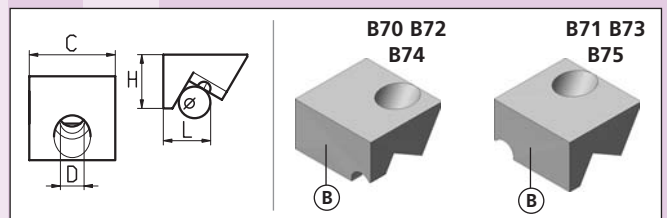


* = weich / soft / doux

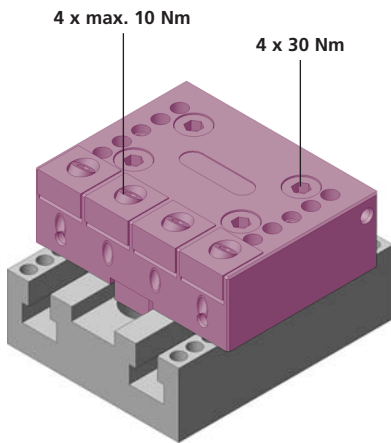
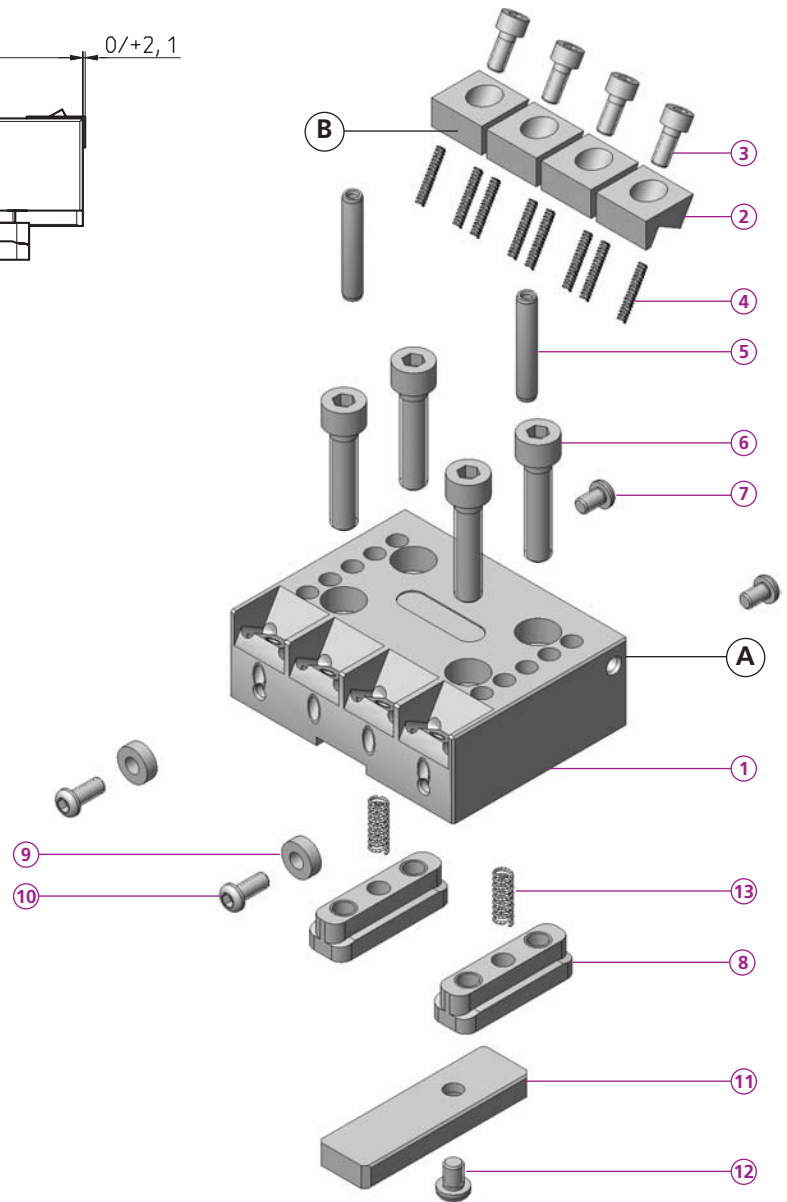
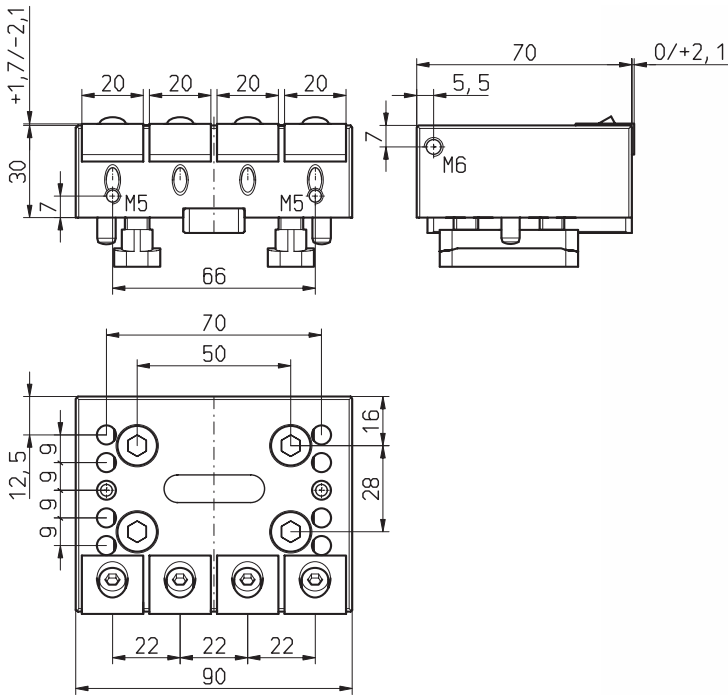


Bestellbeispiel / ordering example / exemple de commande: CS2R 80N30 B70

	A	B	B70	B72	B74	B71	B73	B75
CS2F 80N30 -70								
CS2R 80N30 -70								
①	1x CS2R 80N30 -70							
②	1x _____							
③	1x _____							
④	2x CSM6-40							
⑤	6x FED 0618							
⑥	2x CCBO 0801							
⑦	4x M8x35 ISO 4762							
⑧	2x M5x8 ISO 4762							
⑨	2x CCGU 2867							
⑩	2x CCD 007							
⑪	2x M5x16 ISO 4762							
⑫	1x CCGU 2067							
⑬	1x M6x8 ISO 7380							
kg	1.40							
			C	H	L	D	i	
			35	35	35	35	35	35
			20	20	20	20	20	20
			19	19	19	19	19	19
			9	9	9	9	9	9
			12	12	12	12	12	12
			56 HRC	56 HRC	*	56 HRC	56 HRC	*



* = weich / soft / doux



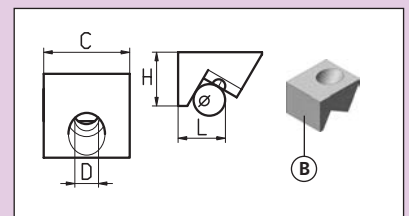
Bestellbeispiel / ordering example / exemple de commande: CS4F 90N30 B07

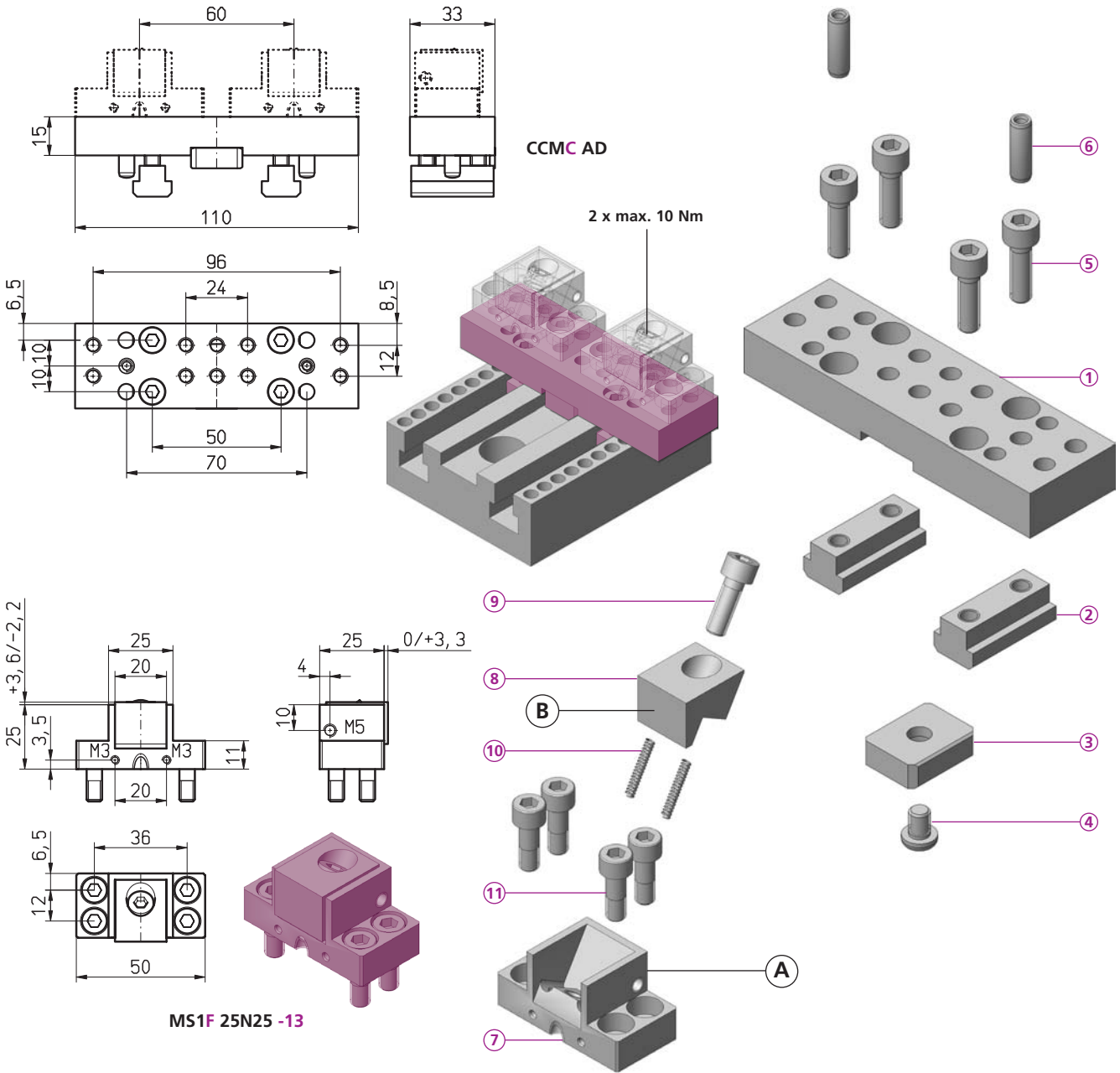
CS4F 90N30 -07

- ① 1x CS4F 90N30 -07
- ② 4x _____
- ③ 4x M5x12 ISO 4762
- ④ 8x FED 03018
- ⑤ 2x CCBO 0801
- ⑥ 1x M8x35 ISO 4762
- ⑦ 2x M5x8 ISO 7380
- ⑧ 2x CCNUT 2845
- ⑨ 2x CCD 004
- ⑩ 2x M5x12 ISO 7380
- ⑪ 1x CCGU 2067
- ⑫ 1x M6x6 IOS 7380
- ⑬ 2x FED 0618

kg 1.50

	B07	B08	B09
③	20	20	20
④	10	10	10
⑤	10.7	10.7	10.7
⑥	5.2	5.2	5.2
⑦	8	8	8
⑧	HV 700x 0.2mm	HV 700x 0.2mm	*





Bestellbeispiel / ordering example / exemple de commande: CCMC AD / CS1F 25N25 B13

CCMC AD	
①	1x CCMC AD -
②	2x CCNUT 3220
③	1x CCGU 2025
④	1x M6x8 ISO 7380
⑤	4x M6x20 ISO 4762
⑥	6x CCBO 0802
kg	0.50

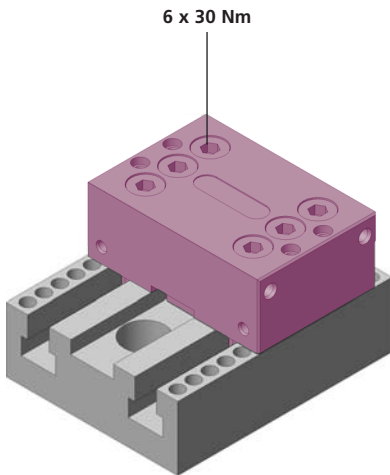
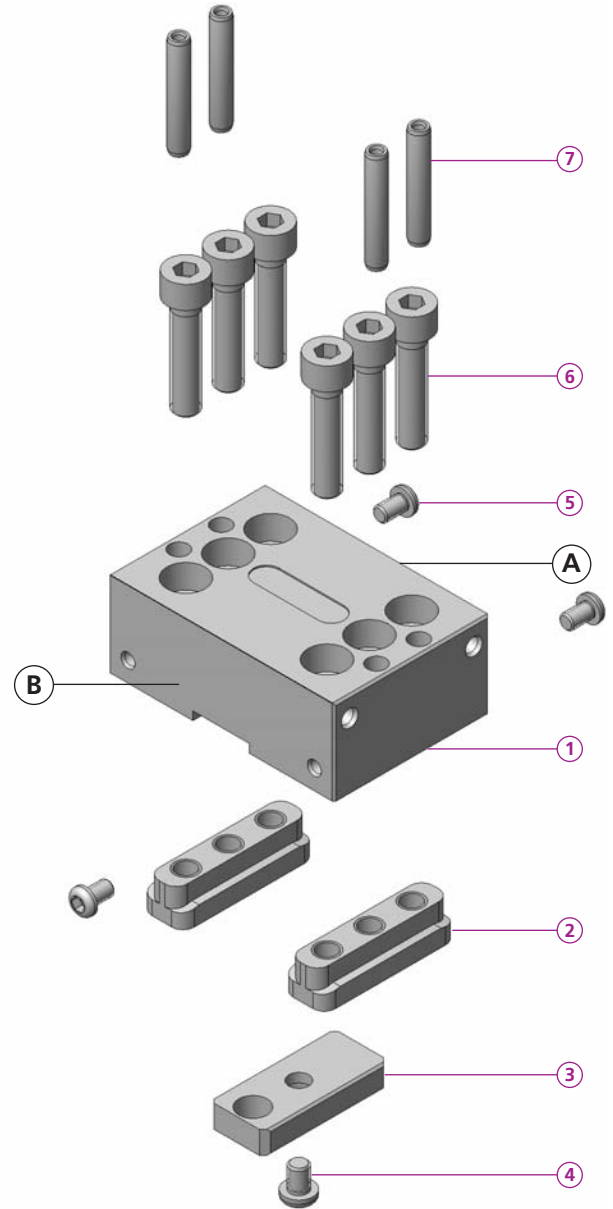
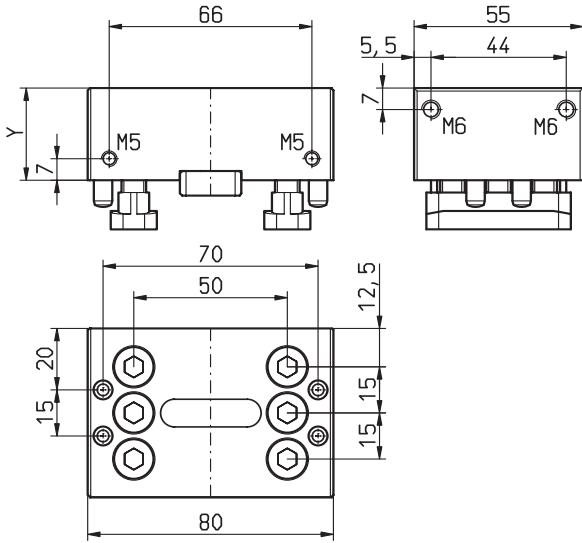
MS1F 25N25 -13	
⑦	1x MS1F 25N25 -13
⑧	1x _____
⑨	1x M5x12 ISO 4762
⑩	2x FED 03018
⑪	4x MS 60
kg	0.18

	B13	B14	B15
①	20	20	20
②	16	16	16
③	13.8	13.8	13.8
④	6.5	6.5	6.5
⑤	10	10	10
⑥	HV 700x 0.2mm	HV 700x 0.2mm	*

* = weich / soft / doux

CAND 80-30
CADD 80-30
CAND 80-50

compactCLAMP



Bestellbeispiel / ordering example / exemple de commande: **CAND 80-30**

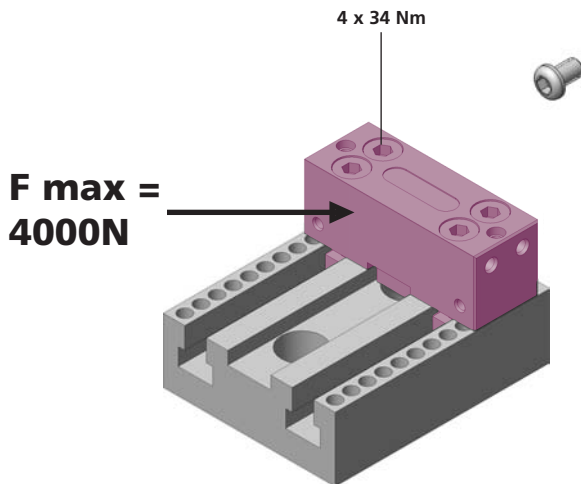
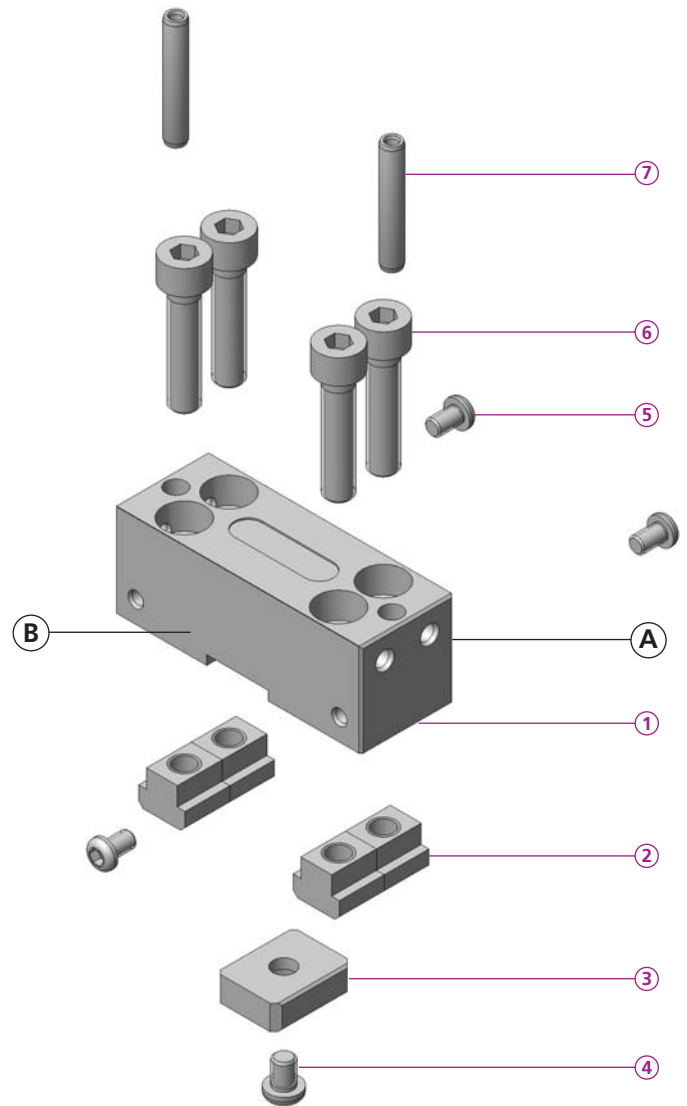
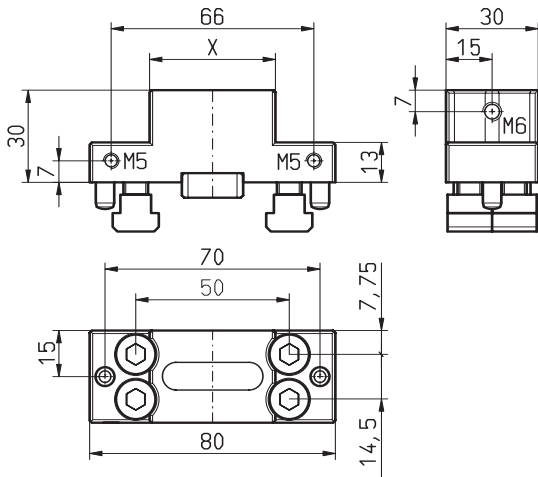
	A	B
CAND 80-30		
①	1x CAND 80-30-	
②	2x CCNUT 3055	
③	1x CCGU 2044	
④	1x M6x8 ISO 7380	
⑤	2x M5x8 ISO 7380	
⑥	6x M8x35 ISO 4762	
⑦	4x CCBO 0801	
	nitriergehärtet	
	nitrated	
	nitruré	
Y	30	
kg	1.20	

	A	B
CADD 80-30		
①	1x CADD 80-30-	
②	2x CCNUT 3055	
③	1x CCGU 2044	
④	1x M6x8 ISO 7380	
⑤	2x M5x8 ISO 7380	
⑥	6x M8x35 ISO 4762	
⑦	4x CCBO 0801	
	durchgehärtet	
	through hardened	
	treppe	
Y	30	
kg	1.20	

	A	B
CAND 80-50		
①	1x CAND 80-50-	
②	2x CCNUT 3055	
③	1x CCGU 2044	
④	1x M6x8 ISO 7380	
⑤	2x M5x8 ISO 7380	
⑥	6x M8x55 ISO 4762	
⑦	4x CCBO 0801	
	nitriergehärtet	
	nitrated	
	nitruré	
Y	50	
kg	1.80	

CAND 80-30-30
CAND 41-30-30

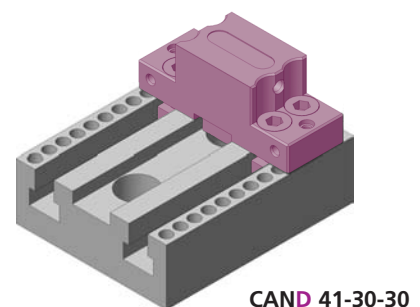
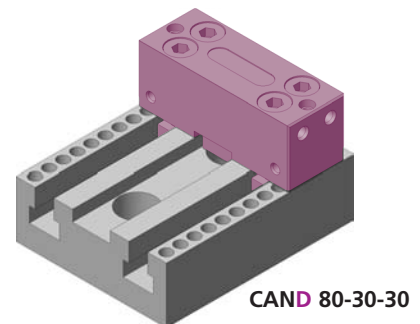
compactCLAMP



Bestellbeispiel / ordering example / exemple de commande: **CAND 41-30-30**

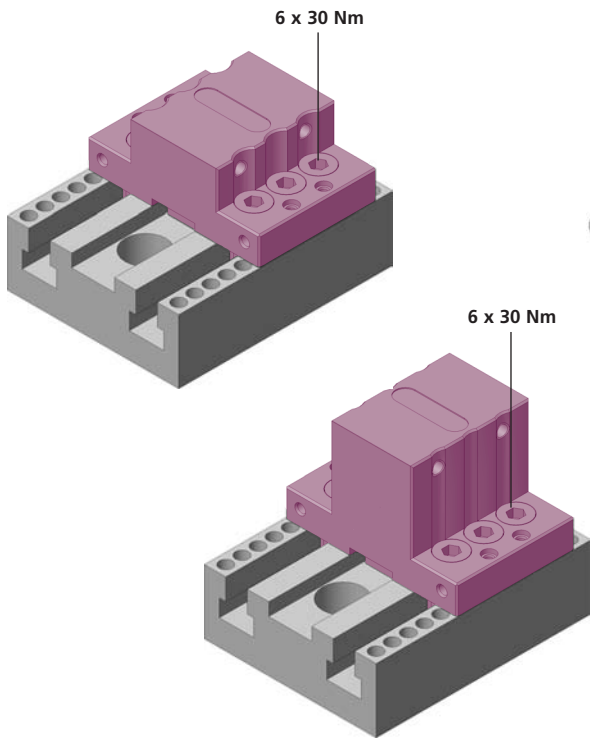
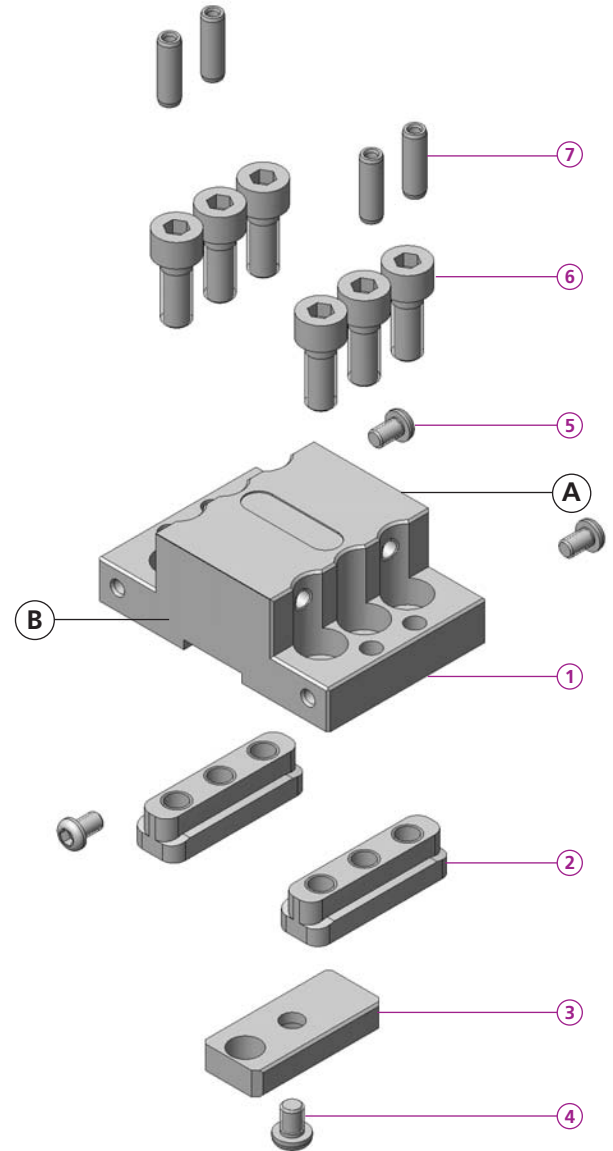
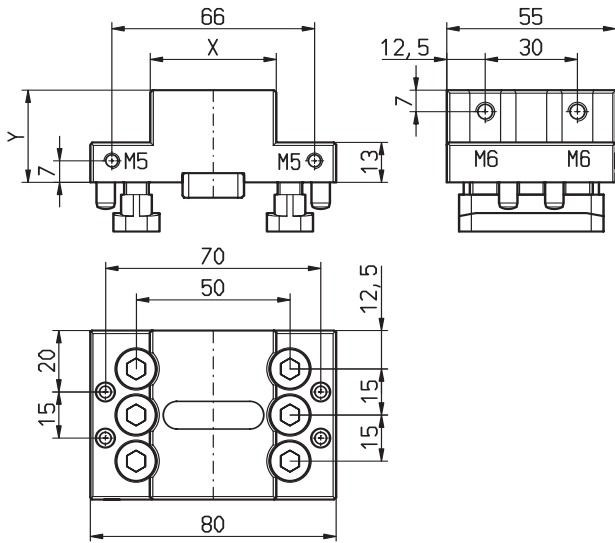
	A	B
CAND 80-30-30		
①	1x CAND 80-30-30-	
②	4x CCNUT 10	
③	1x CCGU 2025	
④	1x M6x8 ISO 7380	
⑤	2x M5x8 ISO 7380	
⑥	4x M8x20 ISO 4762	
⑦	2x CCBO 0801	
X	80	
kg	0.60	

	A	B
CADD 41-30-30		
①	1x CADD 41-30-30-	
②	4x CCNUT 10	
③	1x CCGU 2025	
④	1x M6x8 ISO 7380	
⑤	2x M5x8 ISO 7380	
⑥	4x M8x20 ISO 4762	
⑦	2x CCBO 0802	
X	41	
kg	0.50	



CAND 41-30
CADD 41-30
CAND 38-50

compactCLAMP



Bestellbeispiel / ordering example / exemple de commande: **CAND 41-30**

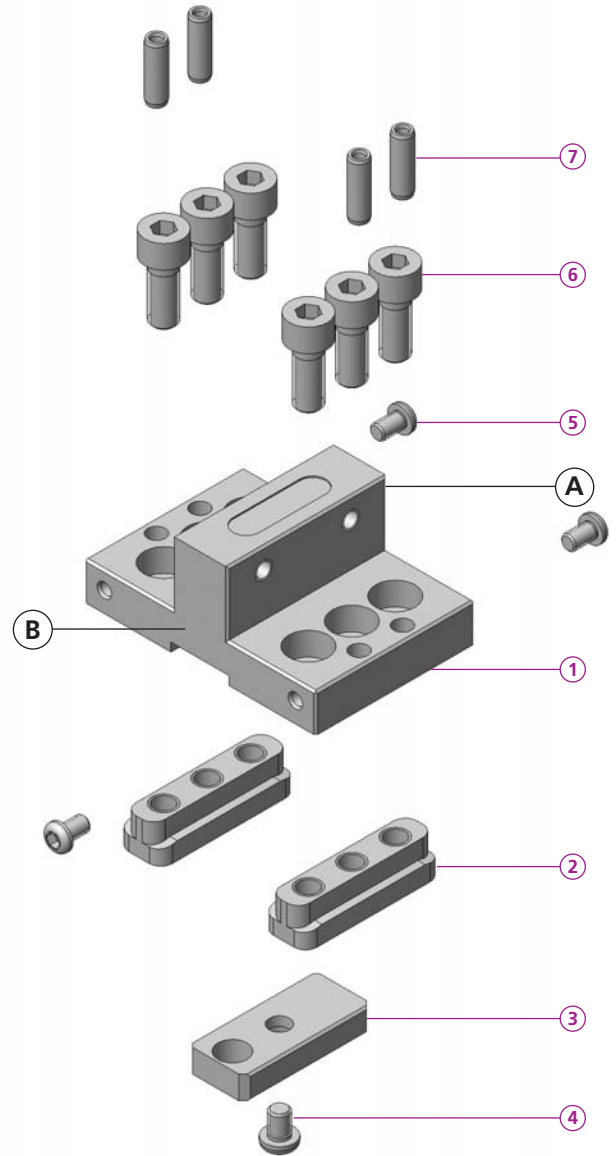
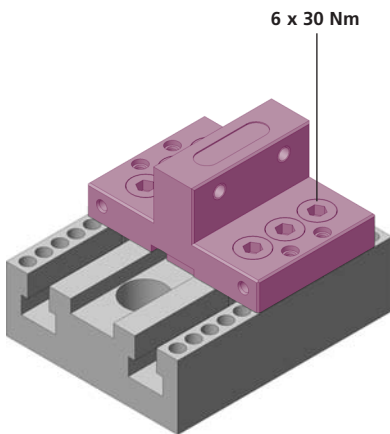
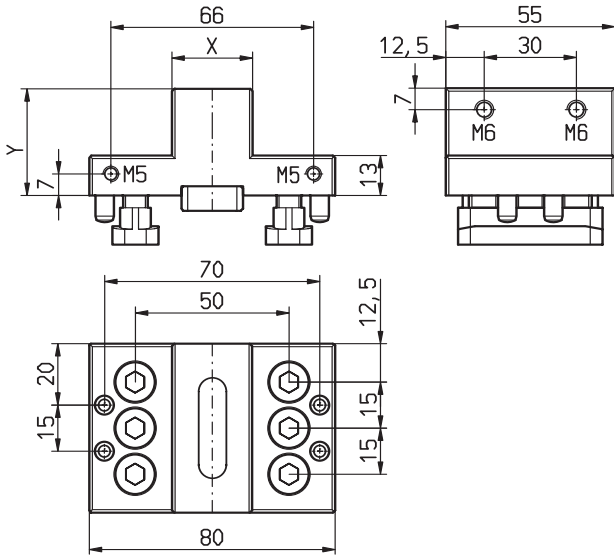
	A	B
CAND 41-30		
①	1x CAND 41-30-	
②	2x CCNUT 3055	
③	1x CCGU 2044	
④	1x M6x8 ISO 7380	
⑤	2x M5x8 ISO 7380	
⑥	6x M8x20 ISO 4762	
⑦	4x CCBO 0802	
	nitriergehärtet	
	nitrated	
	nitruré	
X	41	
Y	30	
kg	0.90	

	A	B
CADD 41-30		
①	1x CADD 41-30-	
②	2x CCNUT 3055	
③	1x CCGU 2044	
④	1x M6x8 ISO 7380	
⑤	2x M5x8 ISO 7380	
⑥	6x M8x20 ISO 4762	
⑦	4x CCBO 0802	
	durchgehärtet	
	through hardened	
	trepé	
X	41	
Y	30	
kg	0.90	

	A	B
CAND 38-50		
①	1x CAND 38-50-	
②	2x CCNUT 3055	
③	1x CCGU 2044	
④	1x M6x8 ISO 7380	
⑤	2x M5x8 ISO 7380	
⑥	6x M8x20 ISO 4762	
⑦	4x CCBO 0802	
	nitriergehärtet	
	nitrated	
	nitruré	
X	38	
Y	50	
kg	1.20	

CAND 19-35 CAND 26-35

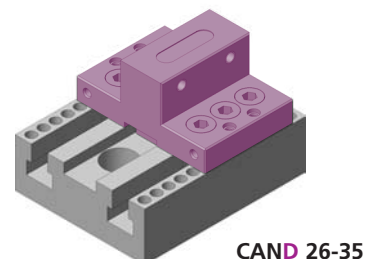
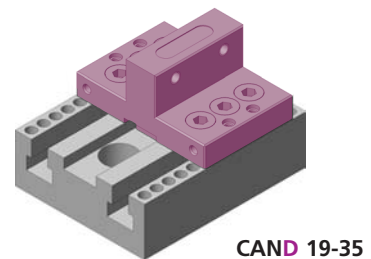
compactCLAMP



Bestellbeispiel / ordering example / exemple de commande: CAND 19-35

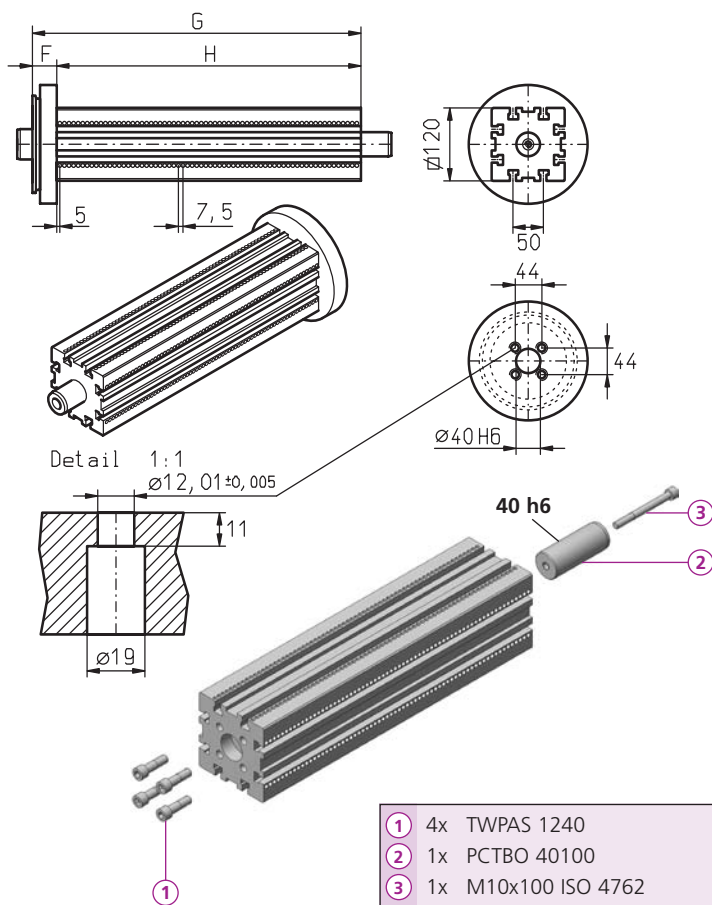
	A	B
CAND 19-35		
①	1x CAND 19-35-	
②	4x CCNUT 3055	
③	1x CCGU 2044	
④	1x M6x8 ISO 7380	
⑤	2x M5x8 ISO 7380	
⑥	6x M8x20 ISO 4762	
⑦	2x CCBO 0802	
X	19	
kg	0.80	

	A	B
CADD 26-35		
①	1x CADD 26-35-	
②	4x CCNUT 3055	
③	1x CCGU 2044	
④	1x M6x8 ISO 7380	
⑤	2x M5x8 ISO 7380	
⑥	6x M8x20 ISO 4762	
⑦	2x CCBO 0802	
X	26	
kg	0.90	



Balken zu Teilapparat / *compact*CLAMP Turm trunion for indexer / *compact*CLAMP tombstone poutre pour diviseur / tourelle *compact*CLAMP

CCT 120...

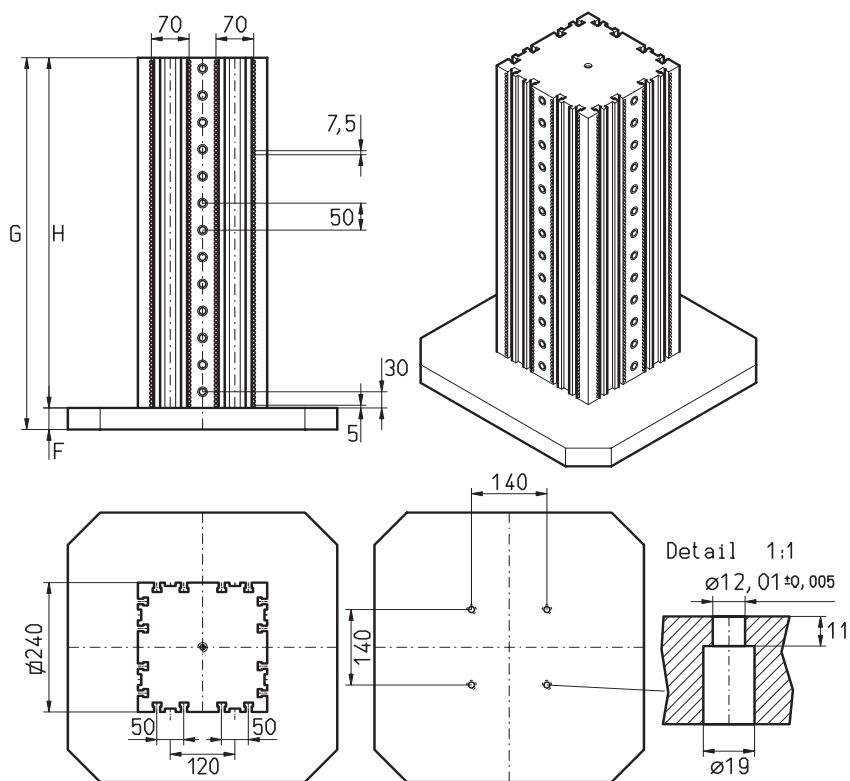
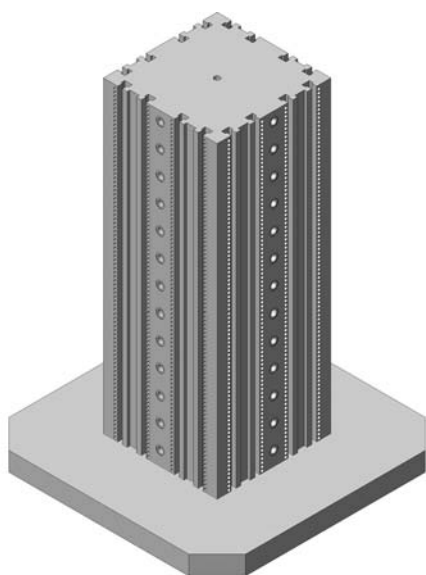


	G	H	F	Kg *
CCT 120 - 300	325	300	25	12
CCT 120 - 350	375	350	25	14
CCT 120 - 400	425	400	25	16
CCT 120 - 450	475	450	25	18
CCT 120 - 500	525	500	25	20

* Gewicht ohne Flansch
 weight without adapter plate
 poids sans plaque de base

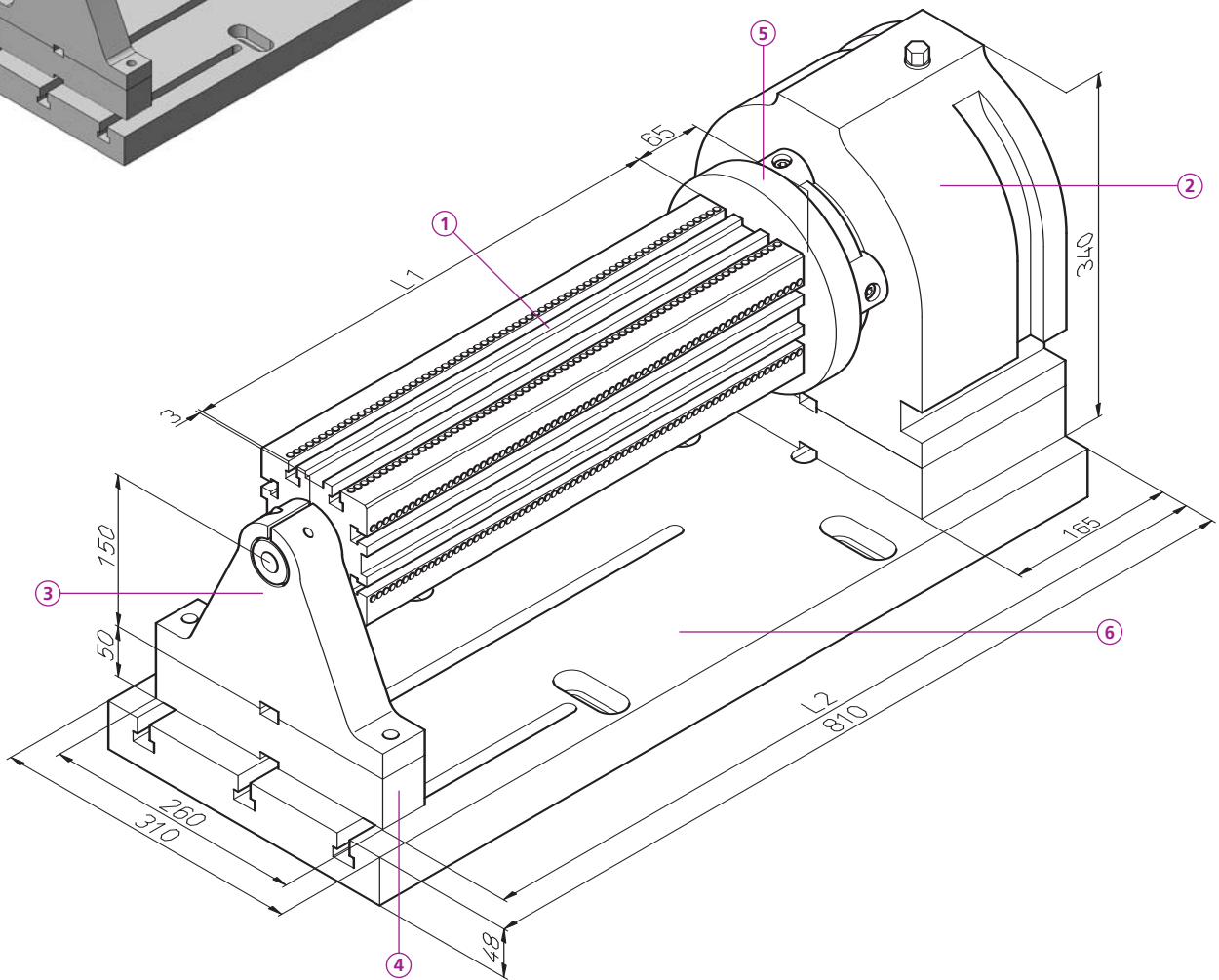
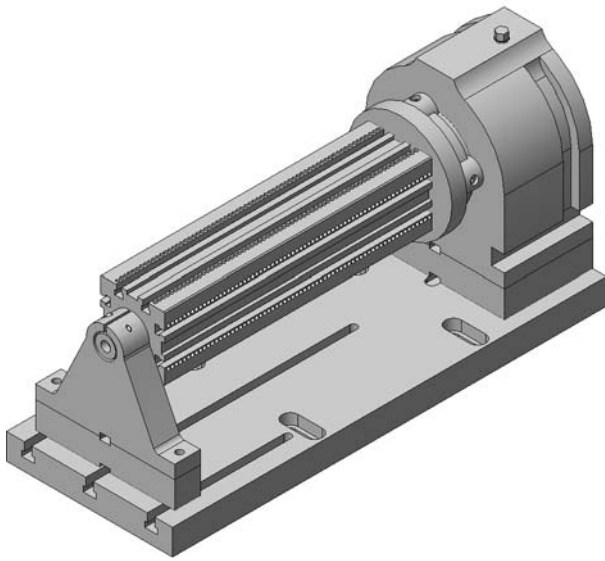
- ① 4x TWPAS 1240
- ② 1x PCTBO 40100
- ③ 1x M10x100 ISO 4762

CCT 240...



	G	H	F	Kg *
CCT 240 - 400	440	400	40	60
CCT 240 - 450	490	450	40	68
CCT 240 - 500	540	500	40	75
CCT 240 - 550	590	550	40	83
CCT 240 - 600	640	600	40	91
CCT 240 - 650	690	650	40	98

* Gewicht ohne Grundplatte
 weight without base plate
 poids sans plaque de base



CCTMK 120-400

- ① 1x CCT 120 - 400
- ② 1x 7105250
- ③ 1x 7105430 - 49
- ④ 2x 7105560 - 49
- ⑤ 1x 7105650 - 49
- ⑥ 1x 7105520 - 49

L1 = 400
L2 = 681

CCTMK 120-450

- ① 1x CCT 120 - 450
- ② 1x 7105250
- ③ 1x 7105430 - 49
- ④ 2x 7105560 - 49
- ⑤ 1x 7105650 - 49
- ⑥ 1x 7105520 - 49

L1 = 450
L2 = 731

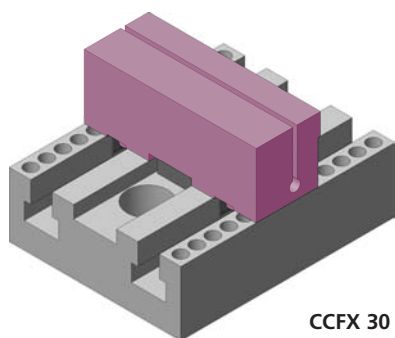
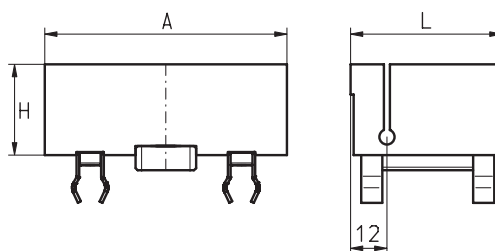
CCTMK 120-500

- ① 1x CCT 120 - 500
- ② 1x 7105250
- ③ 1x 7105430 - 49
- ④ 2x 7105560 - 49
- ⑤ 1x 7105650 - 49
- ⑥ 1x 7105520 - 49

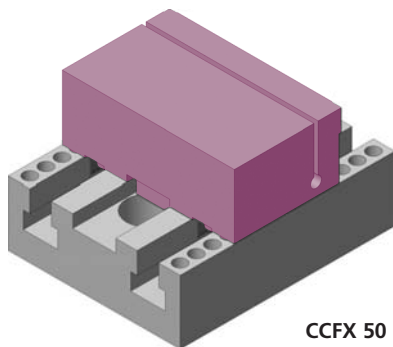
L1 = 500
L2 = 781

Click-Flex

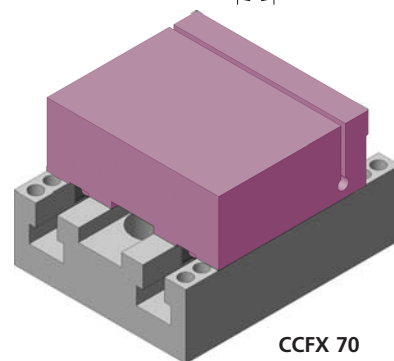
	A	L	H
CCFX 30	80	30	30
CCFX 50	80	50	30
CCFX 70	80	70	30



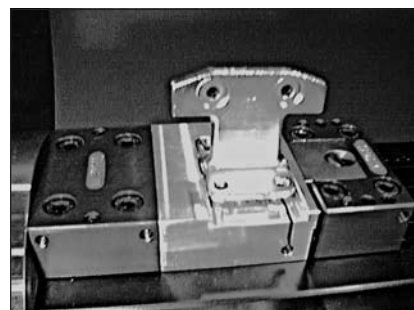
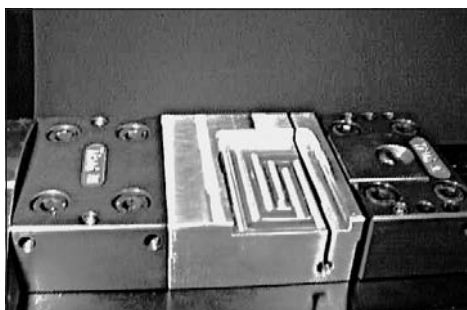
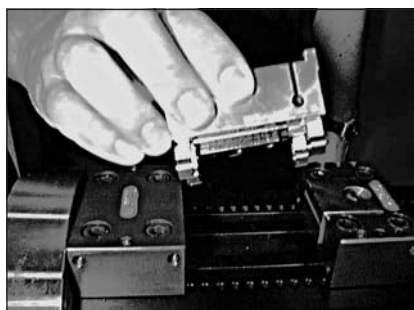
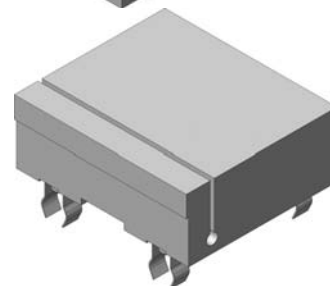
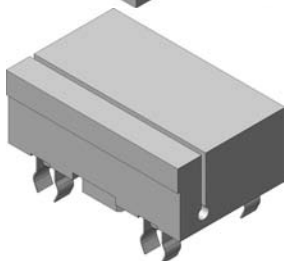
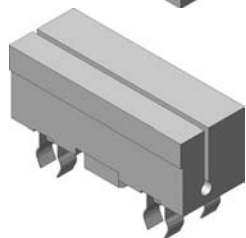
CCFX 30



CCFX 50

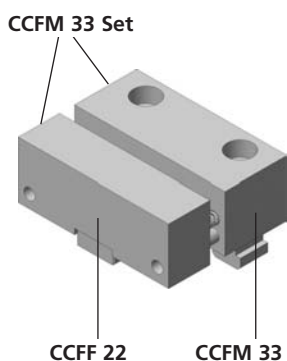
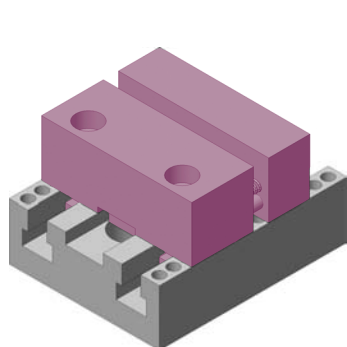
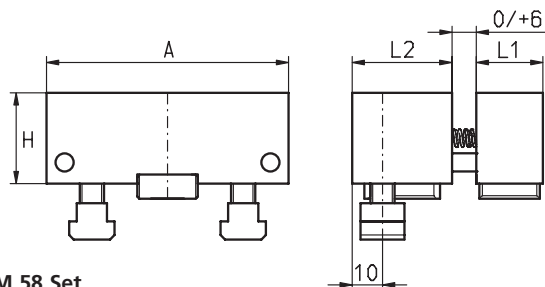


CCFX 70



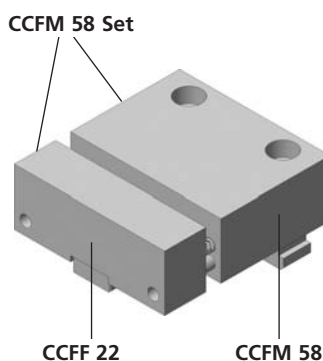
Click-Fix

	A	L1	L2	H
CCFF 22	80	22		30
CCFM 33	80		33	30
CCFM 58	80		58	30
CCFM 33 Set	CCFF 22 + CCFM 33			
CCFM 58 Set	CCFF 22 + CCFM 58			



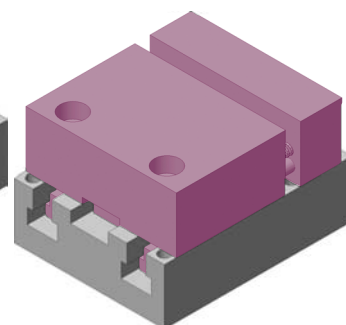
CCFF 22

CCFM 33

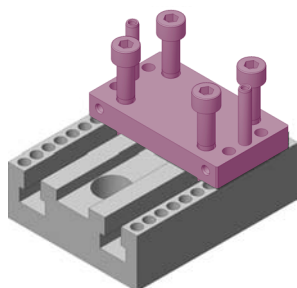
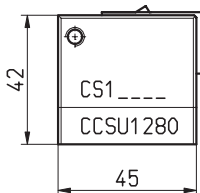
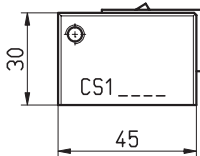
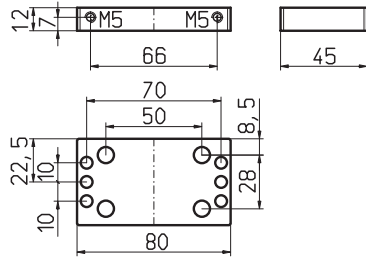


CCFF 22

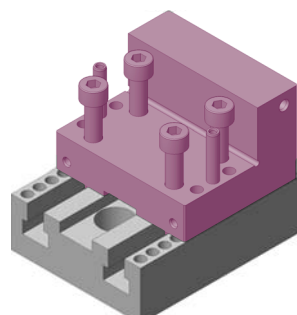
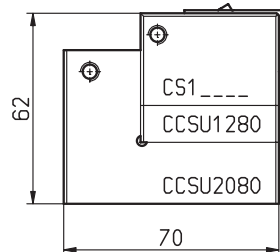
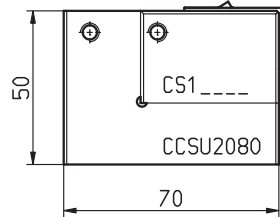
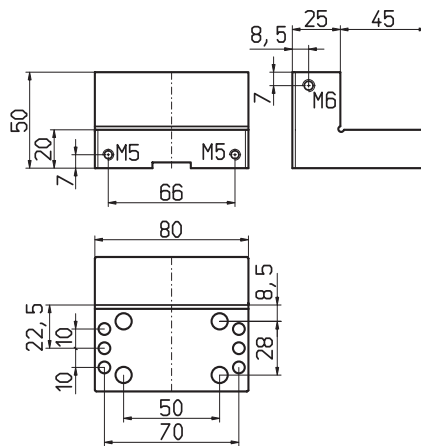
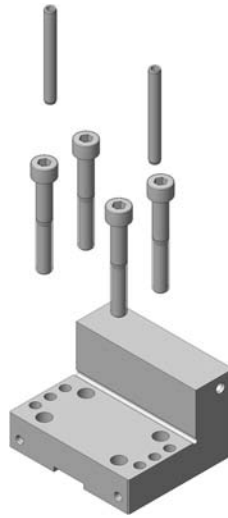
CCFM 58



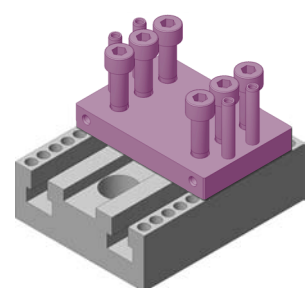
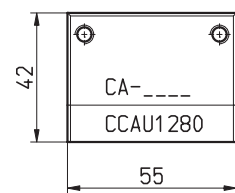
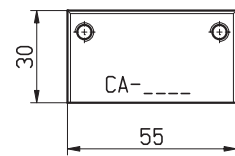
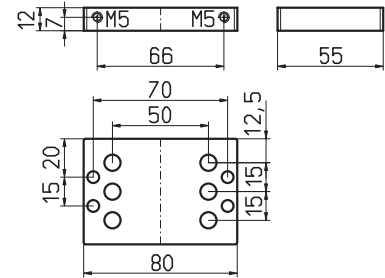
CCSU 1280



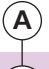
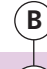


CCSU 2080







CCAU 1280



7 x M6 für / for / pour CCHMR

CC 8011			X	Y
CC 8025			30	24
			50	44

3 x M6 für / for / pour CCHMR



CC 8021			X	Y
CC 8026			30	24
			50	44


weich / soft / doux





CC 8030	X	30
CC 8030 50	X	50





CC 8050 V120°	X	30 max ø 120
---------------	---	--------------

CC 8050 V90°	X	30 max ø 42
--------------	---	-------------

CC 8060		X	30
CC 8060R		X	30

CC 8070		X	30
---------	---	---	----

CC 8210			X	30
CC 8211			X	30

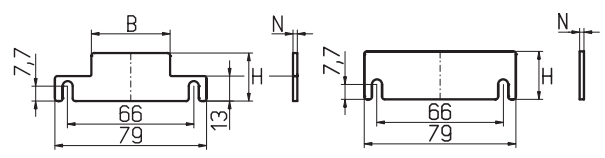
CC 8220			X	30
CC 8221			X	30

durchgehärtet / through hardened / trempé

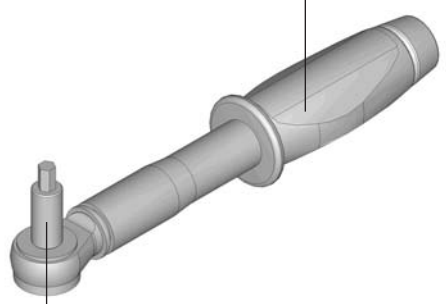
nitriert / nitrated / nitruré

		H	B	N
CCU	15080	15	79	2.2
	20080	20	79	2.2
	25080	25	79	2.2
	27580	27.5	79	2.2
	30080	30	79	2.2
	35080	35	79	2.2
	40080	40	79	2.2
CCU	15081	15	41	2.2
	20081	20	41	2.2
	25081	25	41	2.2
	27581	27.5	41	2.2
	30081	30	41	2.2
CCU	15026	15	26	2.2
	20026	20	26	2.2
	25026	25	26	2.2
	30026	30	26	2.2
	32526	32.5	26	2.2
CCU	30039	30	38	2.2
	35039	35	38	2.2
	40039	40	38	2.2
	45039	45	38	2.2

		H	B	N
CCU	15082	15	79	3
	20082	20	79	3
	25082	25	79	3
	27582	27.5	79	3
	15083	15	41	3
	20083	20	41	3
	25083	25	41	3
	27583	27.5	41	3
CCU	15027	15	26	3
	20027	20	26	3
	25027	25	26	3
	30027	30	26	3
	32527	32.5	26	3



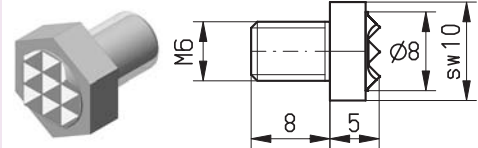
SL0 4-20 Nm (1/4")
SL1 8-54 Nm (3/8")



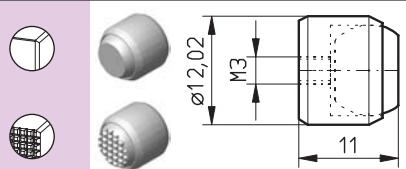
Nuss 1/4" 4 mm
5 mm
6 mm

Nuss 3/8" 6 mm
8 mm
10 mm

CCHMR
HM
carbide
carbure



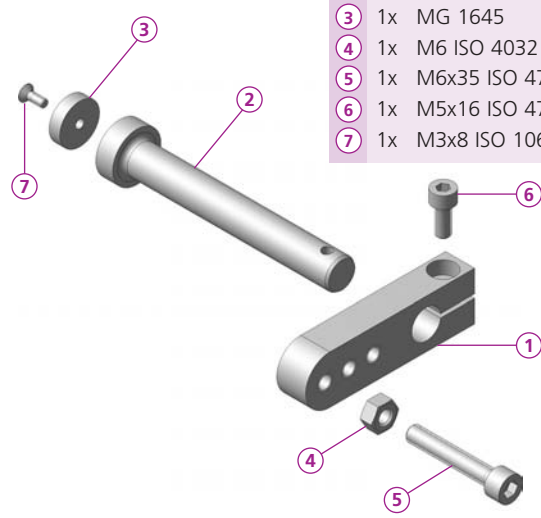
CCPD 60 HRC

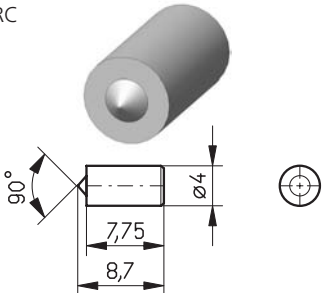
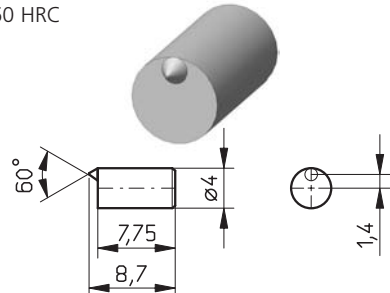
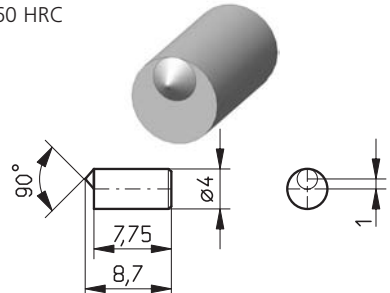


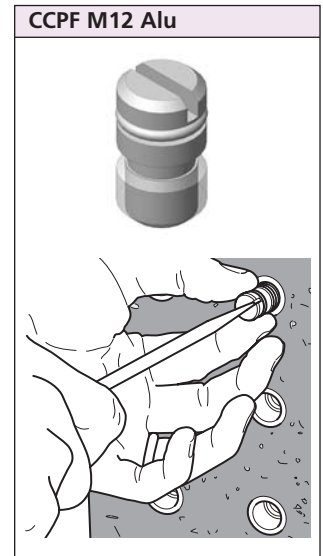
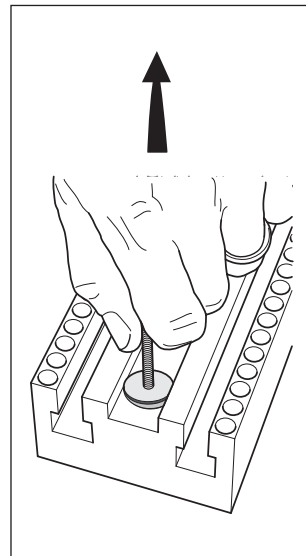
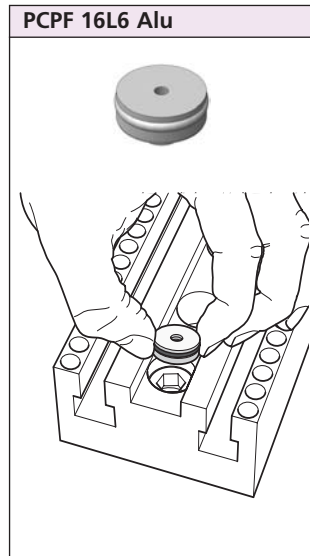
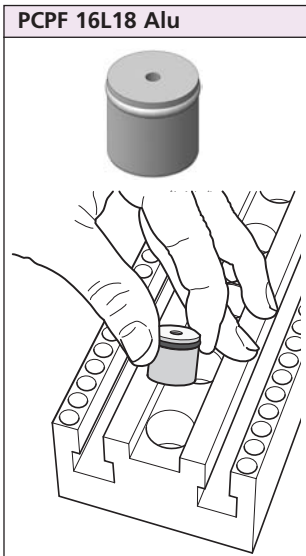
CCPDR 60 HRC

FA UM 2070

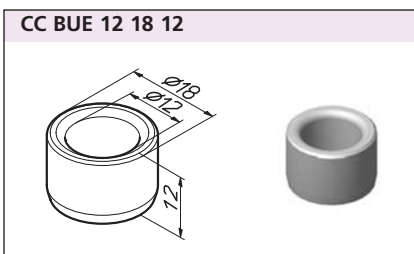
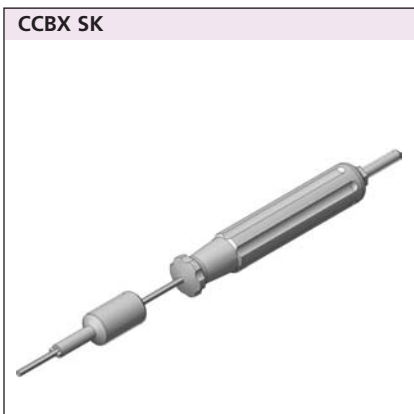
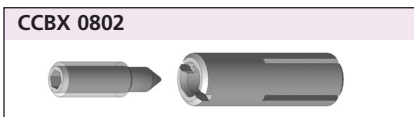
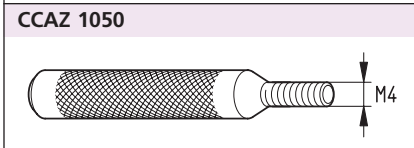
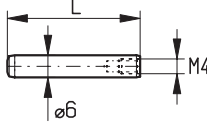
- ① 1x FA 2070
- ② 1x FAD 2092
- ③ 1x MG 1645
- ④ 1x M6 ISO 4032
- ⑤ 1x M6x35 ISO 4762
- ⑥ 1x M5x16 ISO 4762
- ⑦ 1x M3x8 ISO 10642



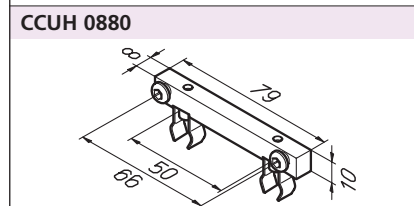
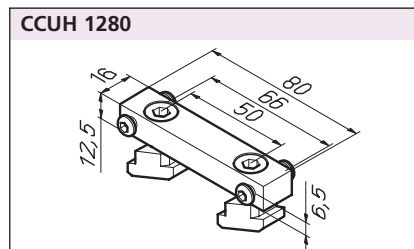
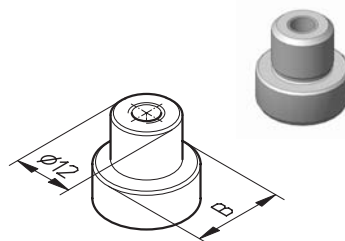
DS 0402-90°	DSE 0402-60°	DSE 0402-90°
60 HRC	60 HRC	60 HRC
		



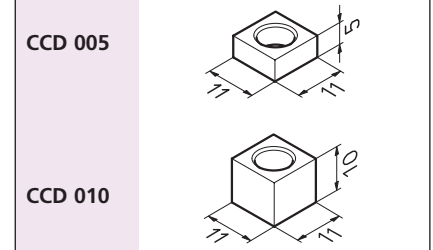
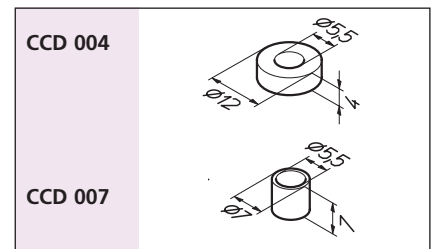
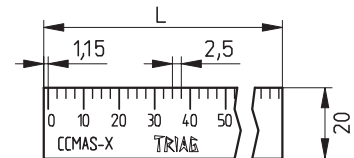
	L
CCBO 0801	36
0802	20
0803	50



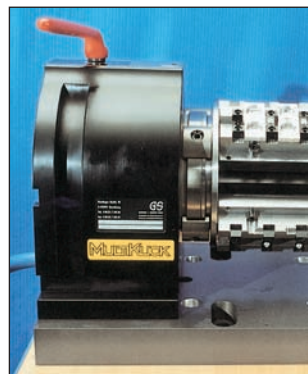
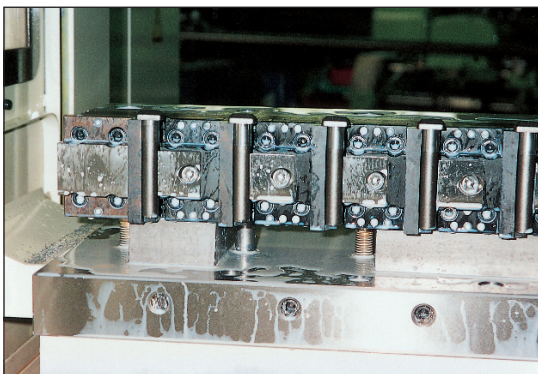
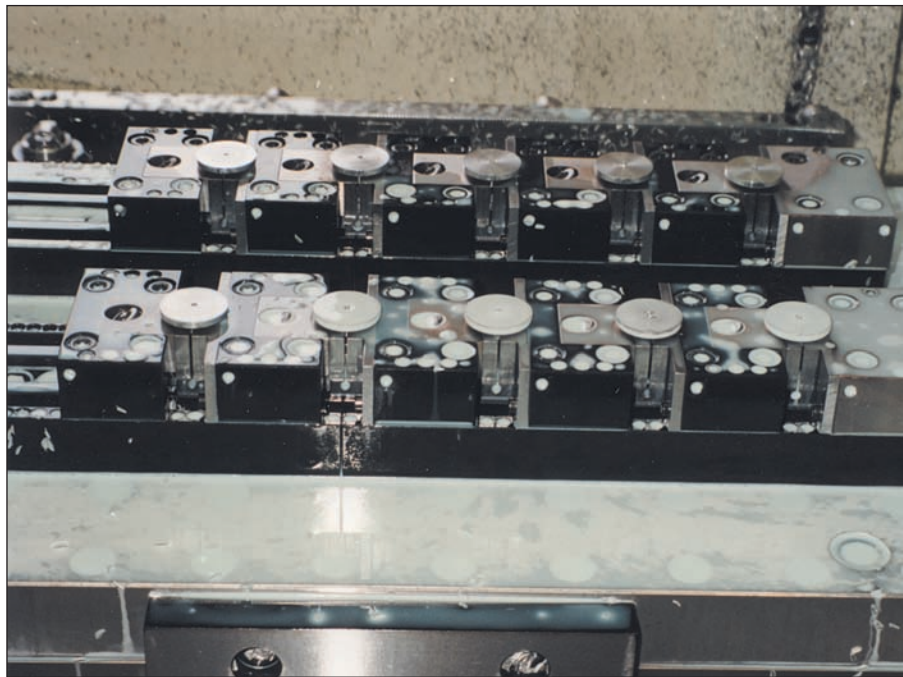
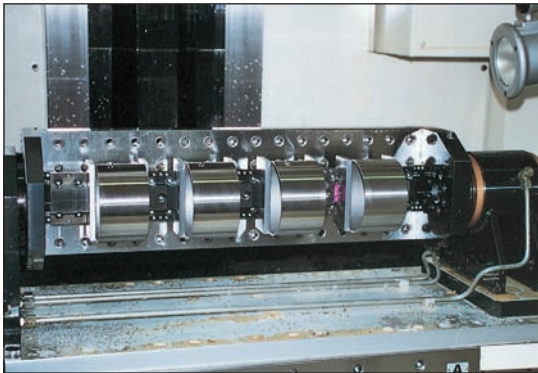
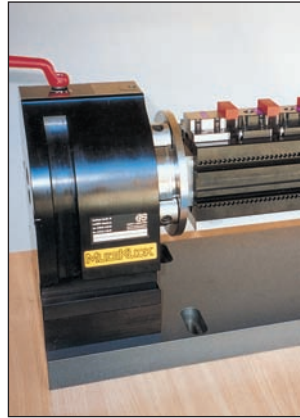
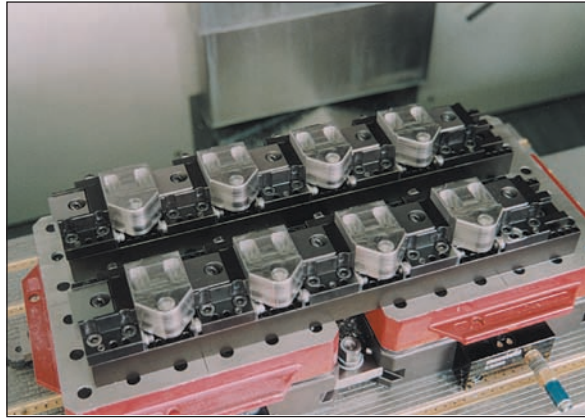
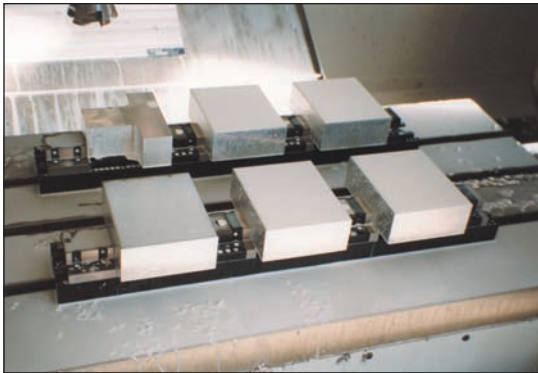
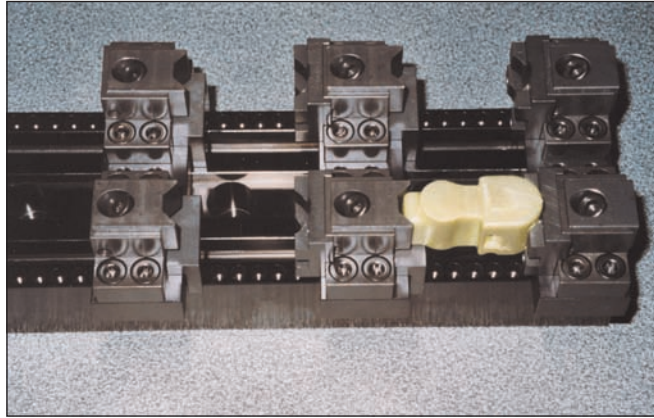
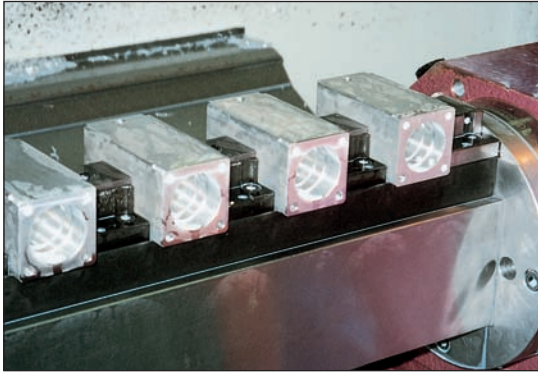
	B
TW ADAPT 12	12
TW ADAPT 14	14
TW ADAPT 16	16
TW ADAPT 18	18
TW ADAPT 20	20
TW ADAPT 22	22



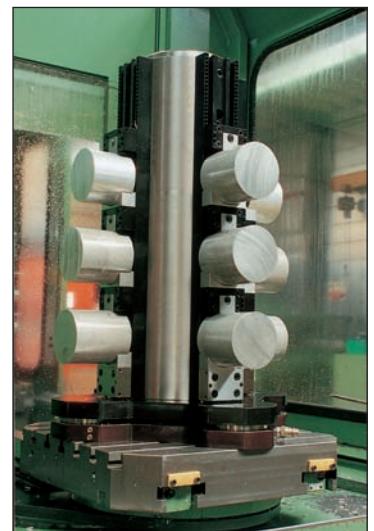
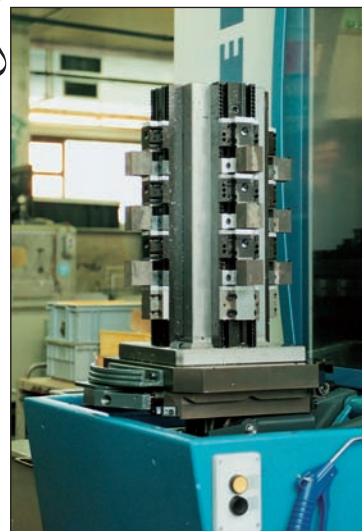
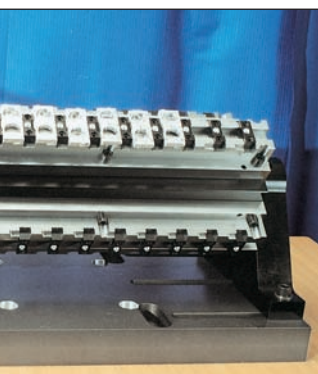
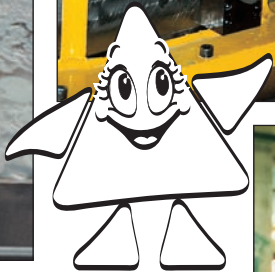
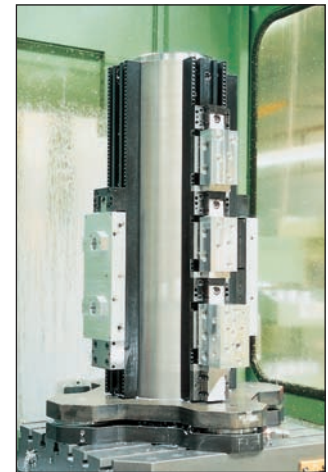
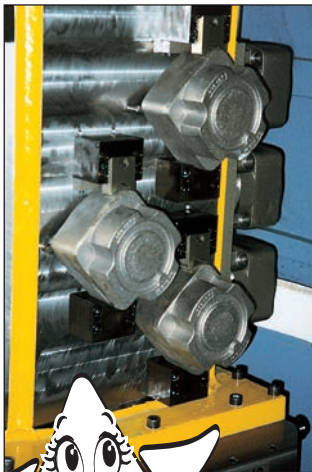
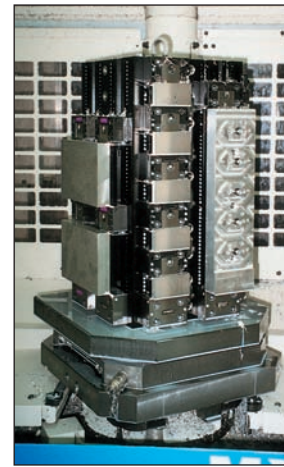
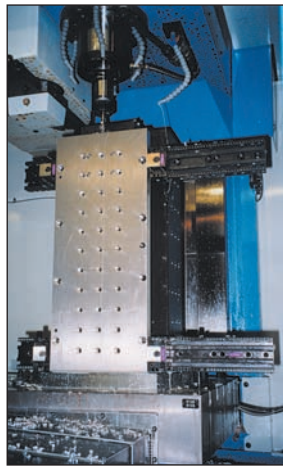
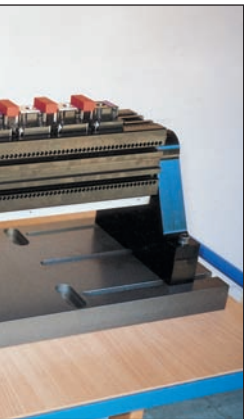
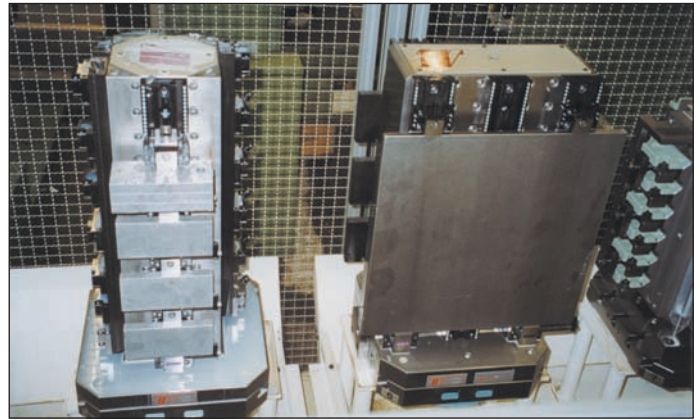
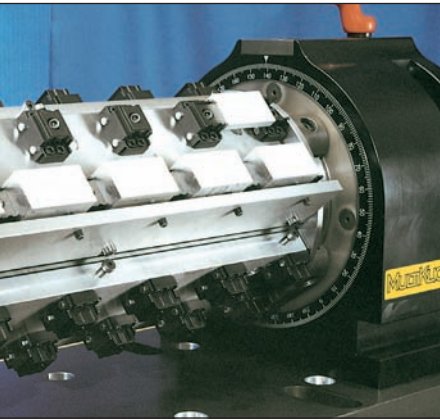
CC MAS	
	350
	400
	450
	500
	550
	600
	650
	700
	750



compactCLAMP



compactCLAMP





powerCLAMP

Das schnellstellbare Mehrfachspannsystem! Die Positionierung erfolgt mittels einer Verzahnung auf der Schiene. Befestigung mit einer Schraube!

powerCLAMP

The quickest multiple workholding system for easy set up! Positioning by means of ground teeth on the base rail. Repositioning by opening one single screw!

powerCLAMP

Le système de serrage multiple le plus rapide à régler! Le positionnement du module s'effectue grâce à une denture rectifiée sur le rail de base. Le positionnement du module est garanti par une seule vis.



compactCLAMP

Das flexible Mehrfachspannsystem! Die Positionierung erfolgt mittels Präzisionsbohrungen in Noniusanordnung. Die Spannelemente werden mit der Basis verstiftet und können daher nicht verschieben.

compactCLAMP

the flexible multiple workholding system! Positioning by bores arranged in vernier type layout. The workholding modules are pinned down to the base and thus can't move.

compactCLAMP

Le système de serrage multiple le plus flexible. Le positionnement s'effectue avec des alésages de précision disposés en ordre Nonius. Les modules de serrage sont fixés sur la base avec des goupilles et de ce fait ne peuvent se déplacer.



microCLAMP

Kleinste Module für den Vorrichtungsbau. Sie haben eine grosse Spannkraft (bis 21'000N), der benötigte Abstand zwischen den Werkstücken ist im Optimalfall nur 15 mm.

microCLAMP

Smallest modules for dedicated fixtures. Having a high clamping force (up to 21'000N) the distance between workpieces is only 15mm in optimum set up.

microCLAMP

Le plus petit module de serrage pour la construction de gabarits. Les modules de serrage Micro Clamp ont une grande force de serrage (jusqu'à 21.000 N) la distance nécessaire entre les pièces à usiner est dans le cas optimal de 15 mm.



tripoxyMINERAL

Spanntürme aus Mineralguss. Die Vibrationsdämpfung ist zehn mal besser als bei Grauguss. Das spezifische Gewicht ist hingegen kleiner als bei Aluminium. Erhältlich in vielen verschiedenen Formen.

tripoxyMINERAL

Tombstones made of composite concrete. Vibration damping effect is ten times better than with cast iron. Specific weight on the other hand is less than aluminum. Available in many different shapes.

tripoxyMINERAL

Les tourelles de serrage en fonte minérale. L'atténuation des vibrations est dix fois supérieur à la fonte grise. Le poids spécifique est plus petit que l'aluminium. Elles sont livrables en diverses formes.



mivaCLAMP

Vakuumspannsystem: Bestens geeignet für plattenförmige Werkstücke (auch nicht magnetische). Es können sowohl Druckstellen als auch Deformativen an labilen Teilen vermieden werden.

mivaCLAMP

Workholding by vacuum: Suited for plateshaped workpieces (also for non magnetical). Pressure marks as well as deformations on soft parts can be avoided.

mivaCLAMP

La meilleure solution pour la fixation de pièces plates (aussi non magnétique) Pas de marques ou blessures sur des matières tendres et pas de déformation avec des pièces instables.



triGEL

Unser Gefrierspannsystem. Sehr gut geeignet für unförmige Teile. Das Haftvermögen ist sehr gross, wobei die Gefrier- und Auftauzeiten sehr gering sind.

triGEL

Workholding by freezing: Well suited for strandly shaped parts. Holding effects are very strong whereas freezing and defrosting times are very short.

triGEL

Notre système de fixation par gel. Recommandé pour des pièces difformes. La force de fixation est très grande et le temps de prise et de dégel est très court.



oppSystem

Unser Nullpunkt-Palettiersystem ermöglicht ein genaues Positionieren von Mehrfachspannsystemen, Schraubstöcken und Vorrichtungen auf Maschinentischen oder Spanntürmen.

oppSystem

Our zero-point palleting system allows exact positioning of multiple workholding systems, vices and dedicated fixtures on machining tables or tombstones.

oppSystem

Notre système de palettisation point zéro garanti un positionnement précis du système de serrage multiple, des étaux, gabarits, constructions spéciales sur la table de la machine ou sur la tourelle de fixation.



5axesCLAMP

Dieses modulare Spannsystem wurde speziell für 5-Achsen-Maschinen entwickelt. Es ermöglicht ein freies zukommen der Maschinenspindel zum Werkstück. Sowohl kleine wie grosse Werkstücke können damit problemlos gespannt werden.

5axesCLAMP

This modular workholding system was especially developed for 5-axes machines. It allows the machine spindle to access freely to the workpiece. Both small and large workpieces can be clamped without difficulties.

5axesCLAMP

Ce système de serrage modulaire a été développé spécialement pour les machines à 5 axes. Ce système autorise un libre accès avec la broche de la machine vers la pièce à usiner. Ce système garanti le serrage de petites et de grandes pièces à usiner.