

Milling Adapters & Holders

sumiLock Plus™ Milling Chucks

Milling Adapters & Holders

sumiLock Plus™ Collets and Accessories

NEW

CT TAPER sumiLock Plus™ MILLING CHUCKS

Catalog Number	Taper	Size Range	L	D	Collet Series
CT40-SLP750	40	1/8" - 3/4"	4.134"	2.047"	SLP750
CT40-SLP1000	40	1/8" - 1"	4.134"	2.362"	SLP1000
CT40-SLP1250	40	3/16" - 1-1/4"	4.724"	2.520"	SLP1250
CT50-SLP750	50	1/8" - 3/4"	5.315"	2.047"	SLP750
CT50-SLP1000	50	1/8" - 1"	5.315"	2.362"	SLP1000
CT50-SLP1250	50	3/16" - 1-1/4"	5.315"	2.717"	SLP1250

NEW

BT TAPER sumiLock Plus™ MILLING CHUCKS

Catalog Number	Taper	Size Range	L	D	Collet Series
BT30-SLP750	30	1/8" - 3/4"	2.953"	2.047"	SLP750
BT40-SLP750	40	1/8" - 3/4"	4.134"	2.047"	SLP750
BT40-SLP1000	40	1/8" - 1"	3.543"	2.362"	SLP1000
BT40-SLP1250	40	3/16" - 1-1/4"	4.724"	2.717"	SLP1250
BT50-SLP1250	50	3/16" - 1-1/4"	5.315"	2.717"	SLP1250

NEW

NMTB TAPER sumiLock Plus™ MILLING CHUCKS

Catalog Number	Taper	Size Range	L	D	Collet Series
NMTB40-SLP1250	40	3/16" - 1-1/4"	4.134"	2.717"	SLP1250
NMTB50-SLP1250	50	3/16" - 1-1/4"	3.543"	2.717"	SLP1250
NMTB50-SLP2000	50	1" - 2"	4.134"	4.134"	SLP2000

NEW

HSK sumiLock Plus™ MILLING CHUCKS

Catalog Number	Taper	Max Capacity	L	D	Collet Series
HSK63-SLP0750-90	HSK-63A	3/4"	3.740"	2.047"	SLP750
HSK63-SLP1000-105	HSK-63A	1"	3.937"	2.362"	SLP1000
HSK100-SLP0750-105	HSK-100A	3/4"	4.528"	2.047"	SLP750
HSK100-SLP1000-105	HSK-100A	1"	4.528"	2.362"	SLP1000
HSK100-SLP1250-105	HSK-100A	1-1/4"	4.528"	2.717"	SLP1250
HSK100-SLP2000-120	HSK-100A	2"	4.921"	4.134"	SLP2000

Additional styles and sizes available on request.

NEW



sumiLock Plus™ Collets

The sumiLock Plus™ Milling Chuck Collets are manufactured to uniformly collapse around the cutting tool shank. This provides maximum gripping power, and concentric positioning of the cutting tool. Standard collets and coolant collets (not pictured) are available for all sizes of sumiLock Plus™ Milling Chucks. SumiLock™ Collets will fit sumiLock Plus™ Milling Collets, but cannot accommodate the sumiLock Plus™ accessory nuts.



Coolant-Thru Nut

The Coolant-Thru Nut forms a complete seal around the cutting tool. This is beneficial for coolant-thru cutting tools. The coolant collet and Coolant-Thru Nut must be ordered on size for each cutting tool.



Slotted Nut

The Slotted Nut allows coolant to travel down the tool's shank to its cutting edge. This is well suited for non-coolant-thru cutting tools. The coolant collet and Slotted Nut must be ordered on size for each cutting tool.



Nozzle Nut

The Nozzle Nut allows you to direct coolant to the cutting edge via three nozzles. This is ideal for coolant-thru cutting tools, specially when the cutting tool shank is smaller than the cutting diameter. The coolant collet and Nozzle Nut must be ordered on size for each cutting tool.

SLP750 sumiLock Plus™ COLLETS

Metric

Standard Collet	Collet I.D.	Coolant Collet	Coolant-Thru Nut	Slotted Nut	Nozzle Nut
SLP750-6	6mm	SLP750-6C	SLP750N-6C	SLP750N-6S	SLP750N-6N
SLP750-7	7mm	SLP750-7C	SLP750N-7C	SLP750N-7S	SLP750N-7N
SLP750-8	8mm	SLP750-8C	SLP750N-8C	SLP750N-8S	SLP750N-8N
SLP750-10	10mm	SLP750-10C	SLP750N-10C	SLP750N-10S	SLP750N-10N
SLP750-12	12mm	SLP750-12C	SLP750N-12C	SLP750N-12S	SLP750N-12N
SLP750-14	14mm	SLP750-14C	SLP750N-14C	SLP750N-14S	SLP750N-14N
SLP750-16	16mm	SLP750-16C	SLP750N-16C	SLP750N-16S	SLP750N-16N

Inch

Standard Collet	Collet I.D.	Coolant Collet	Coolant-Thru Nut	Slotted Nut	Nozzle Nut
SLP750-008	1/8"	SLP750-008C	SLP750N-008C	SLP750N-008S	SLP750N-008N
SLP750-012	3/16"	SLP750-012C	SLP750N-012C	SLP750N-012S	SLP750N-012N
SLP750-016	1/4"	SLP750-016C	SLP750N-016C	SLP750N-016S	SLP750N-016N
SLP750-020	5/16"	SLP750-020C	SLP750N-020C	SLP750N-020S	SLP750N-020N
SLP750-024	3/8"	SLP750-024C	SLP750N-024C	SLP750N-024S	SLP750N-024N
SLP750-028	7/16"	SLP750-028C	SLP750N-028C	SLP750N-028S	SLP750N-028N
SLP750-032	1/2"	SLP750-032C	SLP750N-032C	SLP750N-032S	SLP750N-032N
SLP750-036	9/16"	SLP750-036C	SLP750N-036C	SLP750N-036S	SLP750N-036N
SLP750-040	5/8"	SLP750-040C	SLP750N-040C	SLP750N-040S	SLP750N-040N

Milling Adapters & Holders

sumiLock Plus™ Milling Chucks

SLP1000 sumiLock Plus™ COLLETS

Metric

Standard Collet	Collet I.D.	Coolant Collet	Coolant-Thru Nut	Slotted Nut	Nozzle Nut
SLP1000-6	6mm	SLP1000-6C	SLP1000N-6C	SLP1000N-6S	SLP1000N-6N
SLP1000-8	8mm	SLP1000-8C	SLP1000N-8C	SLP1000N-8S	SLP1000N-8N
SLP1000-10	10mm	SLP1000-10C	SLP1000N-10C	SLP1000N-10S	SLP1000N-10N
SLP1000-12	12mm	SLP1000-12C	SLP1000N-12C	SLP1000N-12S	SLP1000N-12N
SLP1000-14	14mm	SLP1000-14C	SLP1000N-14C	SLP1000N-14S	SLP1000N-14N
SLP1000-16	16mm	SLP1000-16C	SLP1000N-16C	SLP1000N-16S	SLP1000N-16N
SLP1000-18	18mm	SLP1000-18C	SLP1000N-18C	SLP1000N-18S	SLP1000N-18N
SLP1000-20	20mm	SLP1000-20C	SLP1000N-20C	SLP1000N-20S	SLP1000N-20N

Inch

Standard Collet	Collet I.D.	Coolant Collet	Coolant-Thru Nut	Slotted Nut	Nozzle Nut
SLP1000-008	1/8"	SLP1000-008C	SLP1000N-008C	SLP1000N-008S	SLP1000N-008N
SLP1000-012	3/16"	SLP1000-012C	SLP1000N-012C	SLP1000N-012S	SLP1000N-012N
SLP1000-016	1/4"	SLP1000-016C	SLP1000N-016C	SLP1000N-016S	SLP1000N-016N
SLP1000-020	5/16"	SLP1000-020C	SLP1000N-020C	SLP1000N-020S	SLP1000N-020N
SLP1000-024	3/8"	SLP1000-024C	SLP1000N-024C	SLP1000N-024S	SLP1000N-024N
SLP1000-028	7/16"	SLP1000-028C	SLP1000N-028C	SLP1000N-028S	SLP1000N-028N
SLP1000-032	1/2"	SLP1000-032C	SLP1000N-032C	SLP1000N-032S	SLP1000N-032N
SLP1000-040	5/8"	SLP1000-040C	SLP1000N-040C	SLP1000N-040S	SLP1000N-040N
SLP1000-048	3/4"	SLP1000-048C	SLP1000N-048C	SLP1000N-048S	SLP1000N-048N
SLP1000-056	7/8"	SLP1000-056C	SLP1000N-056C	SLP1000N-056S	SLP1000N-056N

SLP1250 sumiLock Plus™ COLLETS

Metric

Standard Collet	Collet I.D.	Coolant Collet	Coolant-Thru Nut	Slotted Nut	Nozzle Nut
SLP1250-6	6mm	SLP1250-6C	SLP1250N-6C	SLP1250N-6S	SLP1250N-6N
SLP1250-8	8mm	SLP1250-8C	SLP1250N-8C	SLP1250N-8S	SLP1250N-8N
SLP1250-10	10mm	SLP1250-10C	SLP1250N-10C	SLP1250N-10S	SLP1250N-10N
SLP1250-12	12mm	SLP1250-12C	SLP1250N-12C	SLP1250N-12S	SLP1250N-12N
SLP1250-14	14mm	SLP1250-14C	SLP1250N-14C	SLP1250N-14S	SLP1250N-14N
SLP1250-16	16mm	SLP1250-16C	SLP1250N-16C	SLP1250N-16S	SLP1250N-16N
SLP1250-20	20mm	SLP1250-20C	SLP1250N-20C	SLP1250N-20S	SLP1250N-20N
SLP1250-25	25mm	SLP1250-25C	SLP1250N-25C	SLP1250N-25S	SLP1250N-25N

Inch

Standard Collet	Collet I.D.	Coolant Collet	Coolant-Thru Nut	Slotted Nut	Nozzle Nut
SLP1250-012	3/16"	SLP1250-012C	SLP1250N-012C	SLP1250N-012S	SLP1250N-012N
SLP1250-016	1/4"	SLP1250-016C	SLP1250N-016C	SLP1250N-016S	SLP1250N-016N
SLP1250-020	5/16"	SLP1250-020C	SLP1250N-020C	SLP1250N-020S	SLP1250N-020N
SLP1250-024	3/8"	SLP1250-024C	SLP1250N-024C	SLP1250N-024S	SLP1250N-024N
SLP1250-028	7/16"	SLP1250-028C	SLP1250N-028C	SLP1250N-028S	SLP1250N-028N
SLP1250-032	1/2"	SLP1250-032C	SLP1250N-032C	SLP1250N-032S	SLP1250N-032N
SLP1250-036	9/16"	SLP1250-036C	SLP1250N-036C	SLP1250N-036S	SLP1250N-036N
SLP1250-040	5/8"	SLP1250-040C	SLP1250N-040C	SLP1250N-040S	SLP1250N-040N
SLP1250-048	3/4"	SLP1250-048C	SLP1250N-048C	SLP1250N-048S	SLP1250N-048N
SLP1250-056	7/8"	SLP1250-056C	SLP1250N-056C	SLP1250N-056S	SLP1250N-056N
SLP1250-064	1"	SLP1250-064C	SLP1250N-064C	SLP1250N-064S	SLP1250N-064N



Milling Adapters & Holders

sumiLock™ Collets and Accessories

SLP2000 sumiLock Plus™ COLLETS

Inch

Standard Collet	Collet I.D.	Coolant Collet	Coolant-Thru Nut	Slotted Nut	Nozzle Nut
SLP2000-064	1"	SLP2000-064C	SLP2000N-064C	SLP2000N-064S	SLP2000N-064N
SLP2000-080	1-1/4"	SLP2000-080C	SLP2000N-080C	SLP2000N-080S	SLP2000N-080N
SLP2000-096	1-1/2"	SLP2000-096C	SLP2000N-096C	SLP2000N-096S	SLP2000N-096N

SLP SPANNER WRENCHES

Catalog Number	For Use With
SLP750MC-SPAN	3/4" Capacity Chucks
SLP1000MC-SPAN	1" Capacity Chucks
SLP1250MC-SPAN	1-1/4" Capacity Chucks
SLP2000MC-SPAN	2" Capacity Chucks



To learn more about Sumitomo's 45° lead angle WGC Milling Cutter turn to pages 34-35.

Milling Adapters & Holders

TG Milling Chucks

CT TAPER TG MILLING CHUCKS

Catalog Number	Taper	Size Range	L	D	Collet Series
CT40-TG750	40	3/64-3/4"	3"	1-7/8"	TG75
CT50-TG750	50	3/64-3/4"	3-1/2"	1-7/8"	TG75
CT40-TG1000S	40	1/16-1"	2-3/4"	2-1/2"	TG100
CT40-TG1000	40	1/16-1"	3-1/2"	2-1/2"	TG100
CT50-TG1000	50	1/16-1"	3-1/2"	2-1/2"	TG100

BT TAPER TG MILLING CHUCKS

Catalog Number	Taper	Size Range	L	D	Collet Series
BT30-TG500	30	1/8-1/2"	2"	1-3/8"	TG50
BT30-TG750	30	3/64-3/4"	2-1/2"	1-7/8"	TG75
BT30-TG1000	30	1/16-1"	3-15/16"	2-1/2"	TG100
BT40-TG1000	40	1/16-1"	3-1/2"	2-1/2"	TG100

NEW
With our broad selection of cutting tools Sumitomo can bring tooling "solutions" to your applications.

NEW

Note: Special diameters and dimensions available per quotation.

* Additional styles and sizes available on request.

Milling Adapters & Holders

TG Collets and Accessories

TG50 COLLETS

Inch

Catalog Number	Collet I.D.	Catalog Number	Collet I.D.
TG050-008	1/8"	TG050-021	21/64"
TG050-009	9/64"	TG050-022	11/32"
TG050-010	5/32"	TG050-023	23/64"
TG050-011	11/64"	TG050-024	3/8"
TG050-012	3/16"	TG050-025	25/64"
TG050-013	13/64"	TG050-026	13/32"
TG050-014	7/32"	TG050-027	27/64"
TG050-015	15/64"	TG050-028	7/16"
TG050-016	1/4"	TG050-029	29/64"
TG050-017	17/64"	TG050-030	15/32"
TG050-018	9/32"	TG050-031	31/64"
TG050-019	19/64"	TG050-032	1/2"
TG050-020	5/16"		

TG75 COLLETS

Inch

Catalog Number	Collet I.D.	Catalog Number	Collet I.D.
TG075-003	3/64"	TG075-026	13/32"
TG075-004	1/16"	TG075-027	27/64"
TG075-005	5/64"	TG075-028	7/16"
TG075-006	3/32"	TG075-029	29/64"
TG075-007	7/64"	TG075-030	15/32"
TG075-008	1/8"	TG075-031	31/64"
TG075-009	9/64"	TG075-032	1/2"
TG075-010	5/32"	TG075-033	33/64"
TG075-011	11/64"	TG075-034	17/32"
TG075-012	3/16"	TG075-035	35/64"
TG075-013	13/64"	TG075-036	9/16"
TG075-014	7/32"	TG075-037	37/64"
TG075-015	15/64"	TG075-038	19/32"
TG075-016	1/4"	TG075-039	39/64"
TG075-017	17/64"	TG075-040	5/8"
TG075-018	9/32"	TG075-041	41/64"
TG075-019	19/64"	TG075-042	21/32"
TG075-020	5/16"	TG075-043	43/64"
TG075-021	21/64"	TG075-044	11/16"
TG075-022	11/32"	TG075-045	45/64"
TG075-023	23/64"	TG075-046	23/32"
TG075-024	3/8"	TG075-047	47/64"
TG075-025	25/64"	TG075-048	3/4"

Note: TG Collets collapse approximately 1/64"

TG100 COLLETS

Inch

Catalog Number			Catalog Number		
Standard Collet	Coolant Collet	Collet I.D.	Standard Collet	Coolant Collet	Collet I.D.
TG100-004	-	1/16"	TG100-035	TG100-035C	35/64"
TG100-005	-	5/64"	TG100-036	TG100-036C	9/16"
TG100-006	-	3/32"	TG100-037	TG100-037C	37/64"
TG100-007	-	7/64"	TG100-038	TG100-038C	19/32"
TG100-008	-	1/8"	TG100-039	TG100-039C	39/64"
TG100-009	-	9/64"	TG100-040	TG100-040C	5/8"
TG100-010	-	5/32"	TG100-041	TG100-041C	41/64"
TG100-011	-	11/64"	TG100-042	TG100-042C	21/32"
TG100-012	-	3/16"	TG100-043	TG100-043C	43/64"
TG100-013	-	13/64"	TG100-044	TG100-044C	11/16"
TG100-014	-	7/32"	TG100-045	TG100-045C	45/64"
TG100-015	-	15/64"	TG100-046	TG100-046C	23/32"
TG100-016	TG100-016C	1/4"	TG100-047	TG100-047C	47/64"
TG100-017	TG100-017C	17/64"	TG100-048	TG100-048C	3/4"
TG100-018	TG100-018C	9/32"	TG100-049	TG100-049C	49/64"
TG100-019	TG100-019C	19/64"	TG100-050	TG100-050C	25/32"
TG100-020	TG100-020C	5/16"	TG100-051	TG100-051C	51/64"
TG100-021	TG100-021C	21/64"	TG100-052	TG100-052C	13/16"
TG100-022	TG100-022C	11/32"	TG100-053	TG100-053C	53/64"
TG100-023	TG100-023C	23/64"	TG100-054	TG100-054C	27/32"
TG100-024	TG100-024C	3/8"	TG100-055	TG100-055C	55/64"
TG100-025	TG100-025C	25/64"	TG100-056	TG100-056C	7/8"
TG100-026	TG100-026C	13/32"	TG100-057	TG100-057C	57/64"
TG100-027	TG100-027C	27/64"	TG100-058	TG100-058C	29/32"
TG100-028	TG100-028C	7/16"	TG100-059	TG100-059C	59/64"
TG100-029	TG100-029C	29/64"	TG100-060	TG100-060C	15/16"
TG100-030	TG100-030C	15/32"	TG100-061	TG100-061C	61/64"
TG100-031	TG100-031C	31/64"	TG100-062	TG100-062C	31/32"
TG100-032	TG100-032C	1/2"	TG100-063	TG100-063C	63/64"
TG100-033	TG100-033C	33/64"	TG100-064	TG100-064C	1"
TG100-034	TG100-034C	17/32"			

TG100 COLLETS

Metric

Catalog Number			Catalog Number		
Standard Collet	Coolant Collet	Collet I.D.	Standard Collet	Coolant Collet	Collet I.D.
TG100-204	-	4mm	TG100-218	TG100-218C	18mm
TG100-206	TG100-206C	6mm	TG100-220	TG100-220C	20mm
TG100-208	TG100-208C	8mm	TG100-222	TG100-222C	22mm
TG100-210	TG100-210C	10mm	TG100-224	TG100-224C	24mm
TG100-212	TG100-212C	12mm	TG100-225	TG100-225C	25mm
TG100-214	TG100-214C	14mm	TG100-226	TG100-226C	26mm
TG100-216	TG100-216C	16mm			

(Continued on next page)

Milling Adapters & Holders

TG Collets and Accessories

(continued from previous page)

TG CHUCK NUT WRENCHES

Catalog Number	Description
TG25-SPAN	Fits TG25 Chuck Nut
TG50-SPAN	Fits TG50 Chuck Nut
TG75-SPAN	Fits TG75 Chuck Nut
TG100-SPAN	Fits TG100 Chuck Nut
TG150-SPAN	Fits TG150 Chuck Nut

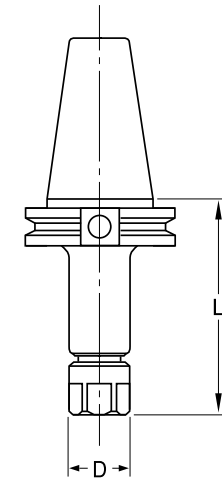
REPLACEMENT TG BACKUP SCREWS

Catalog Number	Collet Type
TG25-3	TG25
TG50-3	TG50
TG75-3	TG75
TG100-3	TG100
TG150-3	TG150

REPLACEMENT TG CHUCK NUT ASSEMBLIES

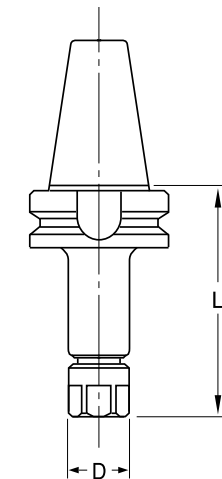
Catalog Number	Description
TG25-NUT	TG25 Chuck Nut, Complete
TG50-NUT	TG50 Chuck Nut, Complete
TG75-NUT	TG75 Chuck Nut, Complete
TG100-NUT	TG100 Chuck Nut, Complete
TG150-NUT	TG150 Chuck Nut, Complete
TG50-1	TG50 Nut Bearing/Spacer Set
TG75-1	TG75 Nut Bearing/Spacer Set
TG100-1	TG100 Nut Bearing/Spacer Set
TG150-1	TG150 Nut Bearing/Spacer Set

NEW
Sumitomo also has a wide variety of carbide, PcBN, PCD, cermet and ceramic inserts for turning and boring applications. Order your catalog today!



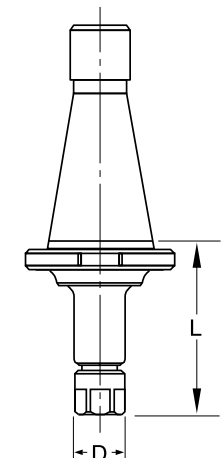
CT TAPER ER MILLING CHUCKS

Catalog Number	Taper	Size Range	L	D	Collet Series
CT40-ER11	40	.019-.275"	2-1/2"	3/4"	ER11
CT40-ER16	40	1/32-13/32"	3-1/2"	1-1/4"	ER16
CT50-ER16	50	1/32-13/32"	4-1/8"	1-1/4"	ER16
CT40-ER20	40	.039-.511"	2-1/2"	1-3/8"	ER20
CT50-ER20	50	.039-.511"	2-1/2"	1-3/8"	ER20
CT40-ER25	40	.039-.629"	2-1/2"	1-11/16"	ER25
CT50-ER25	50	.039-.629"	2-1/2"	1-11/16"	ER25
CT40-ER32	40	.078-.787"	3-1/8"	2"	ER32
CT50-ER32	50	.078-.787"	4"	2"	ER32
CT40-ER40	40	.118-1.023"	3"	2-1/2"	ER40
CT50-ER40	50	.118-1.023"	4"	2-1/2"	ER40



BT TAPER ER MILLING CHUCKS

Catalog Number	Taper	Size Range	L	D	Collet Series
BT30-ER11	30	.019-.275"	2"	3/4"	ER11
BT30-ER11L	30	.019-.275"	4"	3/4"	ER11
BT40-ER11	40	.019-.275"	2-1/2"	3/4"	ER40
BT30-ER16	30	1/32-13/32"	2-3/8"	1-1/4"	ER16
BT30-ER16L	30	1/32-13/32"	4"	1-1/4"	ER16
BT40-ER16	40	1/32-13/32"	3-1/2"	1-1/4"	ER16
BT50-ER16	50	1/32-13/32"	4-1/8"	1-1/4"	ER16
BT40-ER20	40	.039-.511"	2-1/4"	1-3/8"	ER20
BT50-ER20	50	.039-.511"	2-5/8"	1-3/8"	ER20
BT30-ER25	30	.039-.629"	2"	1-5/8"	ER25
BT30-ER25L	30	.039-.629"	4"	1-5/8"	ER25
BT40-ER25	40	.039-.629"	2-1/4"	1-5/8"	ER25
BT50-ER25	50	.039-.629"	2-5/8"	1-5/8"	ER25
BT30-ER32	30	.078-.787"	3"	2"	ER32
BT40-ER32	40	.078-.787"	3-1/8"	2"	ER32
BT50-ER32	50	.078-.787"	4"	2"	ER32
BT50-ER40	50	.118-1.023"	4"	2-1/2"	ER40



NMTB TAPER ER MILLING CHUCKS

Catalog Number	Taper	Size Range	L	D	Collet Series
NMTB40-ER16	40	1/32-13/32"	1-3/4"	1-1/4"	ER16

ER Collets are on the following page.

* Additional styles and sizes available on request.

Milling Adapters & Holders

ER Collets and Accessories

ER SERIES 11 STANDARD COLLETS

Catalog Number	Collet I.D.	
	Metric	Inch
ER11-039	0.5-1mm	.019-.039"
ER11-059	1-1.5mm	.039-.059"
ER11-078	1.5-2mm	.059-.078"
ER11-098	2-2.5mm	.078-.098"
ER11-118	2.5-3mm	.098-.118"
ER11-137	3-3.5mm	.118-.137"
ER11-157	3.5-4mm	.137-.157"
ER11-177	4-4.5mm	.157-.177"
ER11-196	4.5-5mm	.177-.196"
ER11-216	5-5.5mm	.196-.216"
ER11-236	5.5-6mm	.216-.236"
ER11-255	6-6.5mm	.236-.255"
ER11-275	6.5-7mm	.255-.275"

ER SERIES 11 COOLANT COLLETS

Catalog Number	Collet I.D.	
	Metric	
ER11-157C	4.0mm	
ER11-177C	4.5mm	
ER11-196C	5.0mm	
ER11-216C	5.5mm	
ER11-236C	6.0mm	
ER11-255C	6.5mm	
ER11-275C	7.0mm	

ER SERIES 11 COOLANT COLLETS

Catalog Number	Collet I.D.	
	Inch	
ER11-012C	3/16"	
ER11-013C	13/64"	
ER11-014C	7/32"	
ER11-015C	15/64"	
ER11-016C	1/4"	
ER11-017C	17/64"	

ER SERIES 16 STANDARD COLLETS

Catalog Number	Collet I.D.	
	Metric	Inch
ER16-039	0.5-1mm	.019-.039"
ER16-059	1-1.5mm	.039-.059"
ER16-078	1.5-2mm	.059-.078"
ER16-098	2-2.5mm	.078-.098"
ER16-118	2.5-3mm	.098-.118"
ER16-137	3-3.5mm	.118-.137"
ER16-157	3.5-4mm	.137-.157"
ER16-177	4-4.5mm	.157-.177"
ER16-196	4.5-5mm	.177-.196"
ER16-216	5-5.5mm	.196-.216"
ER16-236	5.5-6mm	.216-.236"
ER16-255	6-6.5mm	.236-.255"
ER16-275	6.5-7mm	.255-.275"
ER16-295	7-7.5mm	.275-.295"
ER16-314	7.5-8mm	.295-.314"
ER16-334	8-8.5mm	.314-.334"
ER16-354	8.5-9mm	.334-.354"
ER16-374	9-9.5mm	.354-.374"
ER16-393	9.5-10mm	.374-.393"

ER SERIES 16 COOLANT COLLETS

Catalog Number	Collet I.D.	
	Metric	
ER16-157C	4.0mm	
ER16-177C	4.5mm	
ER16-196C	5.0mm	
ER16-216C	5.5mm	
ER16-236C	6.0mm	
ER16-255C	6.5mm	
ER16-275C	7.0mm	
ER16-295C	7.5mm	
ER16-314C	8.0mm	
ER16-334C	8.5mm	
ER16-354C	9.0mm	
ER16-374C	9.5mm	
ER16-393C	10.0mm	

ER SERIES 16 STANDARD COLLETS

Catalog Number	Collet I.D.	
	Inch	
ER16-002	1/64-1/32"	
ER16-004	1/32-1/16"	
ER16-006	1/16-3/32"	
ER16-008	3/32-1/8"	
ER16-010	1/8-5/32"	
ER16-012	5/32-3/16"	
ER16-014	3/16-7/32"	
ER16-016	7/32-1/4"	
ER16-018	1/4-9/32"	
ER16-020	9/32-5/16"	
ER16-022	5/16-11/32"	
ER16-024	11/32-3/8"	
ER16-026	3/8-13/32"	

ER SERIES 16 COOLANT COLLETS

Catalog Number	Collet I.D.	
	Inch	
ER16-012C	3/16"	
ER16-013C	13/64"	
ER16-014C	7/32"	
ER16-015C	15/64"	
ER16-016C	1/4"	
ER16-017C	17/64"	
ER16-018C	9/32"	
ER16-019C	19/64"	
ER16-020C	5/16"	
ER16-021C	21/64"	
ER16-022C	11/32"	
ER16-023C	23/64"	
ER16-024C	3/8"	
ER16-025C	25/64"	
ER16-026C	13/32"	

ER SERIES 20 STANDARD COLLETS

Catalog Number	Collet I.D.	
	Metric	Inch
ER20-078	1-2mm	.039-.078"
ER20-118	2-3mm	.078-.118"
ER20-137	2.5-3.5mm	.098-.137"
ER20-157	3-4mm	.118-.157"
ER20-196	4-5mm	.157-.196"
ER20-236	5-6mm	.196-.236"
ER20-275	6-7mm	.236-.275"
ER20-314	7-8mm	.275-.314"
ER20-354	8-9mm	.314-.354"
ER20-393	9-10mm	.354-.393"
ER20-433	10-11mm	.393-.433"
ER20-452	11-11.5mm	.433-.452"
ER20-472	11-12mm	.452-.472"
ER20-511	12-13mm	.472-.511"

ER SERIES 20 COOLANT COLLETS

Catalog Number	Collet I.D.	
	Metric	
ER20-196C	5.0mm	
ER20-216C	5.5mm	
ER20-236C	6.0mm	
ER20-255C	6.5mm	
ER20-275C	7.0mm	
ER20-295C	7.5mm	
ER20-314C	8.0mm	
ER20-334C	8.5mm	
ER20-354C	9.0mm	
ER20-374C	9.5mm	
ER20-393C	10.0mm	
ER20-413C	10.5mm	
ER20-433C	11.0mm	
ER20-452C	11.5mm	
ER20-472C	12.0mm	
ER20-492C	12.5mm	
ER20-511C	13.0mm	

ER SERIES 20 COOLANT COLLETS

Catalog Number	Collet I.D.	
	Inch	
ER20-012C	3/16"	

Note: ER Series 11 Collets collapse approximately 1/64."

Note: ER Series 16 through 40 collets collapse approximately 1/32".

Milling Adapters & Holders

ER Collets and Accessories

ER SERIES 25 STANDARD COLLETS

Catalog Number	Collet I.D.	
	Metric	Inch
ER25-078	1-2mm	.039-.078"
ER25-118	2-3mm	.078-.118"
ER25-137	2.5-3.5mm	.098-.137"
ER25-157	3-4mm	.118-.157"
ER25-196	4-5mm	.157-.196"
ER25-236	5-6mm	.196-.236"
ER25-275	6-7mm	.236-.275"
ER25-314	7-8mm	.275-.314"
ER25-354	8-9mm	.314-.354"
ER25-393	9-10mm	.354-.393"
ER25-433	10-11mm	.393-.433"
ER25-452	11-11.5mm	.433-.452"
ER25-472	11-12mm	.452-.472"
ER25-511	12-13mm	.472-.511"
ER25-551	13-14mm	.511-.551"
ER25-590	14-15mm	.551-.590"
ER25-629	15-16mm	.590-.629"

ER SERIES 25 COOLANT COLLETS

Catalog Number	Collet I.D.	
	Metric	
ER25-236C	6.0mm	
ER25-255C	6.5mm	
ER25-275C	7.0mm	
ER25-295C	7.5mm	
ER25-314C	8.0mm	
ER25-334C	8.5mm	
ER25-354C	9.0mm	
ER25-374C	9.5mm	
ER25-393C	10.0mm	
ER25-413C	10.5mm	
ER25-433C	11.0mm	
ER25-452C	11.5mm	
ER25-472C	12.0mm	
ER25-492C	12.5mm	
ER25-511C	13.0mm	
ER25-531C	13.5mm	
ER25-551C	14.0mm	
ER25-570C	14.5mm	
ER25-590C	15.0mm	
ER25-610C	15.5mm	
ER25-629C	16.0mm	

ER SERIES 25 COOLANT COLLETS

Catalog Number	Collet I.D.	
	Inch	
ER25-016C	1/4"	
ER25-017C	17/64"	
ER25-018C	9/32"	
ER25-019C	19/64"	
ER25-020C	5/16"	
ER25-021C	21/64"	
ER25-022C	11/32"	
ER25-023C	23/64"	
ER25-024C	3/8"	

ER SERIES 32 STANDARD COLLETS

Catalog Number	Collet I.D.	
	Metric	Inch
ER32-118	2-3mm	.078-.118"
ER32-137	2.5-3.5mm	.098-.137"
ER32-157	3-4mm	.118-.157"
ER32-196	4-5mm	.157-.196"
ER32-236	5-6mm	.196-.236"
ER32-275	6-7mm	.236-.275"
ER32-314	7-8mm	.275-.314"
ER32-354	8-9mm	.314-.354"
ER32-393	9-10mm	.354-.393"
ER32-433	10-11mm	.393-.433"
ER32-452	11-11.5mm	.433-.452"
ER32-472	11-12mm	.452-.472"
ER32-511	12-13mm	.472-.511"
ER32-551	13-14mm	.511-.551"
ER32-590	14-15mm	.551-.590"
ER32-629	15-16mm	.590-.629"
ER32-669	16-17mm	.629-.669"
ER32-708	17-18mm	.669-.708"
ER32-748	18-19mm	.708-.748"
ER32-767	18.5-19.5mm	.728-.767"
ER32-787	19-20mm	.748-.787"

ER SERIES 32 COOLANT COLLETS

Catalog Number	Collet I.D.	
	Metric	
ER32-393C	10.0mm	
ER32-413C	10.5mm	
ER32-433C	11.0mm	
ER32-452C	11.5mm	
ER32-472C	12.0mm	
ER32-492C	12.5mm	
ER32-511C	13.0mm	
ER32-531C	13.5mm	
ER32-551C	14.0mm	
ER32-570C	14.5mm	
ER32-590C	15.0mm	
ER32-610C	15.5mm	
ER32-629C	16.0mm	
ER32-649C	16.5mm	
ER32-669C	17.0mm	
ER32-688C	17.5mm	
ER32-708C	18.0mm	
ER32-728C	18.5mm	
ER32-748C	19.0mm	
ER32-767C	19.5mm	
ER32-787C	20.0mm	

Note: ER Series 11 collets collapse approximately 1/64".

Milling Adapters & Holders

ER Collets and Accessories

ER SERIES 40 STANDARD COLLETS

Catalog Number	Collet I.D.	
	Metric	Inch
ER40-157	3-4mm	.118-.157"
ER40-196	4-5mm	.157-.196"
ER40-236	5-6mm	.196-.236"
ER40-275	6-7mm	.236-.275"
ER40-314	7-8mm	.275-.314"
ER40-354	8-9mm	.314-.354"
ER40-393	9-10mm	.354-.393"
ER40-433	10-11mm	.393-.433"
ER40-452	11-11.5mm	.433-.452"
ER40-472	11-12mm	.452-.472"
ER40-511	12-13mm	.472-.511"
ER40-551	13-14mm	.511-.551"
ER40-590	14-15mm	.551-.590"
ER40-629	15-16mm	.590-.629"
ER40-669	16-17mm	.629-.669"
ER40-708	17-18mm	.669-.708"
ER40-748	18-19mm	.708-.748"
ER40-767	18.5-19.5mm	.728-.767"
ER40-787	19-20mm	.748-.787"
ER40-826	20-21mm	.787-.826"
ER40-866	21-22mm	.826-.866"
ER40-905	22-23mm	.866-.905"
ER40-944	23-24mm	.905-.944"
ER40-984	24-25mm	.944-.984"
ER40-1023	25-26mm	.984-1.023"

ER SERIES 40 COOLANT COLLETS

Catalog Number	Collet I.D.		Catalog Number	Collet I.D.	
	Metric			Metric	
ER40-393C	10.0mm		ER40-728C	18.5mm	
ER40-413C	10.5mm		ER40-748C	19.0mm	
ER40-433C	11.0mm		ER40-767C	19.5mm	
ER40-452C	11.5mm		ER40-787C	20.0mm	
ER40-472C	12.0mm		ER40-807C	20.5mm	
ER40-492C	12.5mm		ER40-826C	21.0mm	
ER40-511C	13.0mm		ER40-846C	21.5mm	
ER40-531C	13.5mm		ER40-866C	22.0mm	
ER40-551C	14.0mm		ER40-885C	22.5mm	
ER40-570C	14.5mm		ER40-905C	23.0mm	
ER40-590C	15.0mm		ER40-925C	23.5mm	
ER40-610C	15.5mm		ER40-944C	24.0mm	
ER40-629C	16.0mm		ER40-964C	24.5mm	
ER40-649C	16.5mm		ER40-984C	25.0mm	
ER40-669C	17.0mm		ER40-1003C	26.0mm	
ER40-688C	17.5mm		ER40-1023C	26.5mm	
ER40-708C	18.0mm				

REPLACEMENT ER CHUCK NUTS

Catalog Number	Description
ER11-NUT	ER11 Chuck Nut, Complete
ER16-NUT	ER16 Chuck Nut, Complete
ER20-NUT	ER20 Chuck Nut, Complete
ER25-NUT	ER25 Chuck Nut, Complete
ER32-NUT	ER32 Chuck Nut, Complete
ER40-NUT	ER40 Chuck Nut, Complete

ER CHUCK NUT WRENCHES

Catalog Number	Description
ER011-HEX	Fits ER11 Chuck Nut
ER016-SPAN	Fits ER16 Chuck Nut
ER020-SPAN	Fits ER20 Chuck Nut
ER025-SPAN	Fits ER25 Chuck Nut
ER032-SPAN	Fits ER32 Chuck Nut
ER040-SPAN	Fits ER40 Chuck Nut

ER COLLET RACKS

Catalog Number	Description
ER11-RACK	ER11 Collet Rack
ER16-RACK	ER16 Collet Rack
ER20-RACK	ER20 Collet Rack
ER25-RACK	ER25 Collet Rack
ER32-RACK	ER32 Collet Rack
ER40-RACK	ER40 Collet Rack

REPLACEMENT ER BACKUP SCREWS

Catalog Number	Collet Type
ER11-3-Screw	ER11
ER16-3-Screw	ER16
ER20-3-Screw	ER20
ER25-3-Screw	ER25
ER32-3-Screw	ER32
ER40-3-Screw	ER40

ER NUT BEARINGS

Catalog Number	Description
ER16-1	ER16 Bearing/Spacer Set
ER20-1	ER20 Bearing/Spacer Set
ER25-1	ER25 Bearing/Spacer Set
ER32-1	ER32 Bearing/Spacer Set
ER40-1	ER40 Bearing/Spacer Set