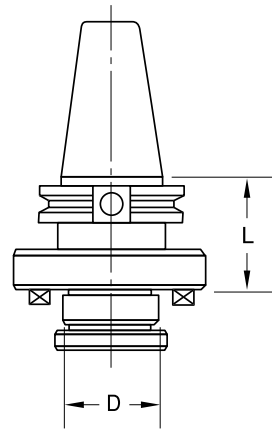


# Milling Adapters & Holders

## Shell & Face Mill Holders

# Milling Adapters & Holders

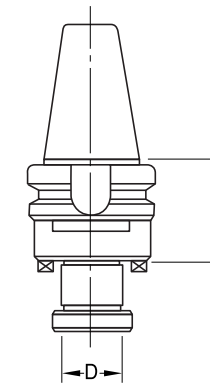
## Shell & Face Mill Holders



### CT TAPER SHELL MILL HOLDERS

Inch

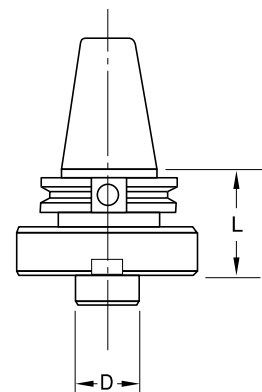
Catalog Number	Taper	D	Face Dia.	L	Sq. Key Size	Arbor Thread	Retention Knob Thread
CT40-750SMH	40	3/4"	2"	1-3/4"	5/16"	3/8"-24	5/8"-11
CT40-1000SMH	40	1"	2-3/8"	1-3/4"	3/8"	1/2"-20	5/8"-11
CT40-1250SMH	40	1-1/4"	2-7/8"	2"	1/2"	5/8"-18	5/8"-11
CT40-1500SMH	40	1-1/2"	3-3/4"	2"	5/8"	3/4"-16	5/8"-11
CT45-750SMH	45	3/4"	2"	1-3/4"	5/16"	3/8"-24	3/4"-10
CT45-1000SMH	45	1"	2-1/4"	1-3/4"	3/8"	1/2"-10	3/4"-10
CT45-1250SMH	45	1-1/4"	2-7/8"	1-3/4"	1/2"	5/8"-18	3/4"-10
CT45-1500SMH	45	1-1/2"	3-3/4"	2"	5/8"	3/4"-16	3/4"-10
CT45-2000SMH	45	2"	4-3/8"	2"	3/4"	1"-12	3/4"-10
CT50-750SMH	50	3/4"	2"	1-3/4"	5/16"	3/8"-24	1"-8
CT50-1000SMH	50	1"	2-3/4"	1-3/4"	3/8"	1/2"-20	1"-8
CT50-1250SMH	50	1-1/4"	2-7/8"	1-3/4"	1/2"	5/8"-18	1"-8
CT50-1500SMH	50	1-1/2"	3-3/4"	2"	5/8"	3/4"-16	1"-8
CT50-2000SMH	50	2"	4-3/8"	2"	3/4"	1"-14	1"-8



### BT TAPER SHELL MILL HOLDERS

Inch

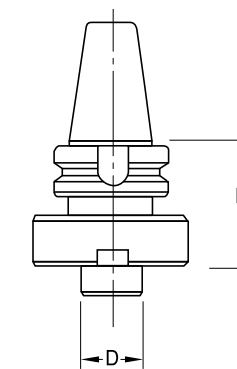
Catalog Number	Taper	D	Face Dia.	L	Sq. Key Size	Arbor Thread	Retention Stud Thread
BT40-750SMH	40	3/4"	2"	1-3/4"	5/16"	3/8"-24	M16P2
BT40-1000SMH	40	1"	2-3/8"	1-3/4"	3/8"	1/2"-20	M16P2
BT40-1250SMH	40	1-1/4"	2-7/8"	1-3/4"	1/2"	5/8"-18	M16P2
BT40-1500SMH	40	1-1/2"	3-3/4"	1-3/4"	5/8"	3/4"-16	M16P2
BT50-750SMH	50	3/4"	2"	1-3/4"	5/16"	3/8"-24	M24P3
BT50-1000SMH	50	1"	2-3/8"	1-3/4"	3/8"	1/2"-20	M24P3
BT50-1250SMH	50	1-1/4"	2-7/8"	2"	1/2"	5/8"-18	M24P3
BT50-1500SMH	50	1-1/2"	3-3/4"	2"	5/8"	3/4"-16	M24P3
BT50-2000SMH	50	2"	4-3/8"	2"	3/4"	1"-14	M24P3



### CT TAPER FACE MILL HOLDERS

Inch

Catalog Number	Taper	D	Face Dia.	L	Sq. Key Size	Retention Knob Thread
CT50-2000FMH	50	2"	5-1/16"	3"	3/4"	1"-8
CT50-2500FMH	50	2-1/2"	5"	3"	1"	1"-8

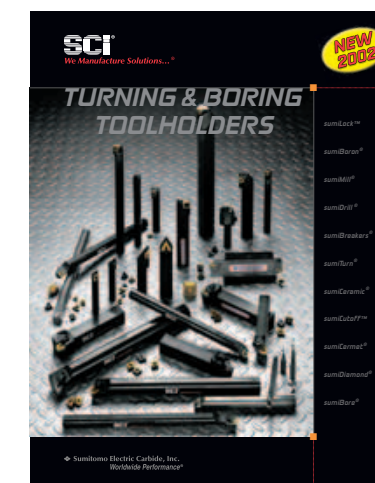


### BT TAPER FACE MILL HOLDERS

Inch

Catalog Number	Taper	D	Face Dia.	L	Sq. Key Size	Retention Stud Thread
BT50-2000FMH	50	2"	5-1/16"	3"	3/4"	1"-8
BT50-2000FMH	50	2-1/2"	5"	3"	1"	1"-8

*Are you turning or boring?  
To see Sumitomo's full line of  
boring bars and toolholders,  
order the Turning & Boring  
Toolholders catalog today.*

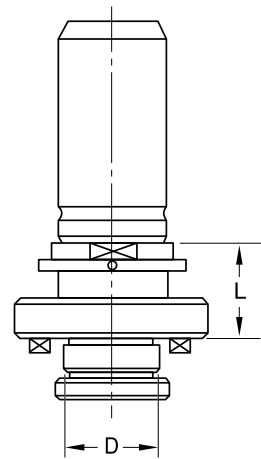


# Milling Adapters & Holders

## Shell Mill Holders

# Milling Adapters & Holders

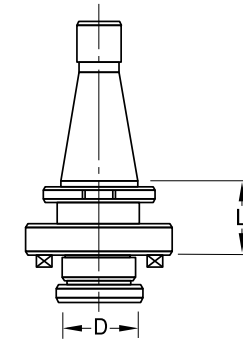
## Shell Mill Holders



### K & T Series 200 SHELL MILL HOLDERS

Inch

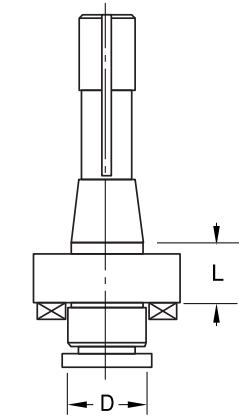
Catalog Number	D	L	Sq. Key Size	Set Screw Size
KT20-750SMH	3/4"	2-15/16"	5/16"	3/8"-24
KT20-1000SMH	1"	2-15/16"	3/8"	1/2"-20
KT20-1250SMH	1-1/4"	3-15/16"	1/2"	5/8"-18
KT20-1500SMH	1-1/2"	3-15/16"	5/8"	3/4"-16



### NMTB TAPER SHELL MILL HOLDERS

Inch

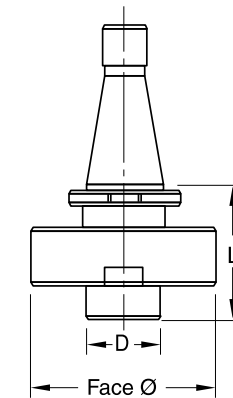
Catalog Number	Taper	D	Face Dia.	L	Sq. Key Size	Arbor Thread
NMTB30-750SMH	30	3/4"	1-15/16"	1-5/16"	5/16"	3/8"-24
NMTB30-1000SMH	30	1"	2-3/8"	1-5/16"	3/8"	1/2"-20
NMTB30-1250SMH	30	1-1/4"	2-7/8"	1-7/16"	1/2"	5/8"-18
NMTB40-750SMH	40	3/4"	2"	7/8"	5/16"	3/8"-24
NMTB40-1000SMH	40	1"	2-3/8"	1-5/16"	3/8"	1/2"-20
NMTB40-1250SMH	40	1-1/4"	2-7/8"	1-1/2"	1/2"	5/8"-18
NMTB40-1500SMH	40	1-1/2"	3-1/2"	1-5/8"	5/8"	3/4"-16
NMTB50-750SMH	50	3/4"	2"	1-1/4"	5/16"	3/8"-24
NMTB50-1000SMH	50	1"	2-3/8"	1-7/8"	3/8"	1/2"-20
NMTB50-1250SMH	50	1-1/4"	2-7/8"	1-7/8"	1/2"	5/8"-18
NMTB50-1500SMH	50	1-1/2"	3-1/2"	1-7/8"	5/8"	3/4"-16
NMTB50-2000SMH	50	2"	4-3/8"	1-7/8"	3/4"	1"-14



### R8 SHELL MILL HOLDERS

Inch

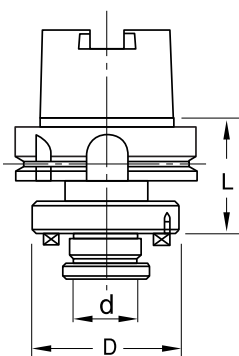
Catalog Number	D	L	Sq. Key Size	Set Screw Size
R8-48-5	3/4"	1"	5/16"	3/8"-24
R8-64-5	1"	1"	3/8"	1/2"-20
R8-80-5	1-1/4"	1"	1/2"	5/8"-18
R8-96-5	1-1/2"	1-3/4"	5/8"	3/4"-16



### NMTB TAPER FACE MILL HOLDERS

Inch

Catalog Number	Taper	D	Face Dia.	L	Sq. Key Size
NMTB50-2000FMH	50	2"	5-1/16"	3"	3/4"
NMTB50-2500FMH	50	2-1/2"	5"	3"	1"



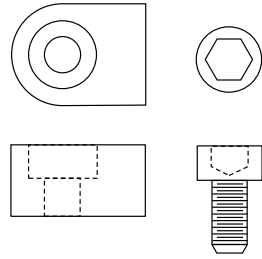
### HSK SHELL MILL HOLDERS

Inch

Catalog Number	Taper	d	L	D	Set Screw Size
HSK63-1000SMH	HSK-63A	1"	2-3/8"	2"	1/2"-20
HSK63-1250SMH	HSK-63A	1-1/4"	2-3/8"	2-3/8"	5/8"-18
HSK63-1500SMH	HSK-63A	1-1/2"	2-3/8"	3-1/8"	3/4"-16
HSK100-1000SMH	HSK-100A	1"	3"	2"	1/2"-20
HSK100-1250SMH	HSK-100A	1-1/4"	3"	2-3/8"	5/8"-18
HSK100-1500SMH	HSK-100A	1-1/2"	3"	3-1/8"	3/4"-16
HSK100-2000SMH	HSK-100A	2"	3"	3-7/8"	1"-14

# Milling Adapters & Holders

## Replacement Keys & Arbor Screws



### REPLACEMENT SHELL MILL HOLDER KEYS

Catalog Number	Description
SMHK-3/4-Keyset	Two 5/16" Keys with Screws
SMHK-1-Keyset	Two 3/8" Keys with Screws
SMHK-1-1/4-Keyset	Two 1/2" Keys with Screws
SMHK-1-1/2-Keyset	Two 5/8" Keys with Screws
SMHK-2-Keyset	Two 3/4" Keys with Screws
SMHK-FMH-Keyset	Two 1" Keys with Screws

### ARBOR SCREW AND MOUNTING BOLT REFERENCE FOR SUMITOMO MILLING CUTTERS



Screw/Bolt Description	Cutter Type/Size
*3/8-24x-1-1/4" Lg. Socket Head Cap Screw	(series) UFO, APG, DPG, CHG, WFM, CPG, FPG, EHG & WGC [size: 2.000" - 3.000"]
BFX3/4x16	(series) UFO, APG, DPG, CHG, WFM, CPG, FPG, EHG & WGC [size: 4.000" - 5.000"]
BFX1x14	(series) UFO, APG, DPG, CHG, WFM, CPG, FPG, EHG & WGC [size: 6.000"]
*5/8-11x2-3/16" Lg. Socket Head Cap Screw	(series) UFO, APG, DPG, CHG, WFM, CPG, FPG, EHG & WGC [size: 8.000" - 12.000"]

\*Note: Standard "Hardware Store" items are not available from Sumitomo. These items should have class 2A threads (min.) and conform to ASTM A574-76 for best results. Reference "Grade 8" or better required.