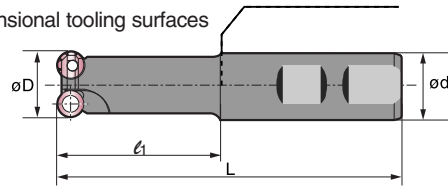


Wave Mill Series Indexable End Mills

WRC Weldon Shank Series

Features and Benefits

- Round style inserts (with wiper) withstand extraordinary feed rates while providing improved finishes.
- Unique faceted inserts offer up to eight indexes at economical "M" class prices.
- Pocket design eliminates insert rotation and breakage during aggressive machining.
- Designed with some of the highest ramping and plunging capabilities in the industry.
- Wide flute relief provides for phenomenal chip evacuation.
- Created specifically for the interpolation of complex three-dimensional tooling surfaces and for maximum roughing capabilities.
- Four different insert diameters allow for compliance with a wide range of part radii.
- Metric sizes available upon request.



Dimensions (inches)							
Catalog Number	øD	ød	L	L ₁ *	Insert Diameter	No. Inserts	Ramp Angle
WRCW38100RS	1.000	1.000	4.321	2.060	0.375	2	11°30'
WRCW38100RM	1.000	1.000	5.321	3.060	0.375	2	11°30'
WRCW38100RL	1.000	1.250	6.321	4.060	0.375	2	11°30'
WRCW38125RS	1.250	1.250	4.046	1.785	0.375	2	7°30'
WRCW38125RM	1.250	1.250	5.046	2.785	0.375	2	7°30'
WRCW38125RL	1.250	1.250	6.046	3.785	0.375	2	7°30'
WRCW50125RS	1.250	1.250	4.321	2.060	0.500	2	18°30'
WRCW50125RM	1.250	1.250	5.321	3.060	0.500	2	18°30'
WRCW50125RL	1.250	1.250	6.321	4.060	0.500	2	18°30'
WRCW38150RS	1.500	1.250	4.321	2.060	0.375	3	5°30'
WRCW38150RM	1.500	1.250	5.321	3.060	0.375	3	5°30'
WRCW38150RL	1.500	1.250	6.321	4.060	0.375	3	5°30'
WRCW50150RS	1.500	1.250	4.321	2.060	0.500	3	12°30'
WRCW50150RM	1.500	1.500	5.748	3.060	0.500	3	12°30'
WRCW50150RL	1.500	1.500	6.748	4.060	0.500	3	12°30'
WRCW38200RS	2.000	1.250	4.321	2.060	0.375	4	3°30'
WRCW38200RM	2.000	1.500	5.748	3.060	0.375	4	3°30'
WRCW38200RL	2.000	1.500	6.748	4.060	0.375	4	3°30'
WRCW50200RS	2.000	1.500	4.748	2.060	0.500	3	7°30'
WRCW50200RM	2.000	1.500	5.748	3.060	0.500	3	7°30'
WRCW50200RL	2.000	1.500	6.748	4.060	0.500	3	7°30'

*This dimension represents the actual "extension from holder".

WRC Shell Mills

Sumitomo Cat. No.	Coated		Dimensions (Inches)			
	AC230	AC2310	Insert Dia.	T	Max D.O.C.	Figure
QPMT32.510PPEN	•	•	0.375	0.156	0.1875	1
QPMT32.510PPEN-H	•	•	0.375	0.156	0.1875	2
QPMT4312PPEN	•	•	0.500	0.1875	0.250	1
QPMT4312PPEN-H	•	•	0.500	0.1875	0.250	2
QPMT6416PPEN	•	•	0.750	0.250	0.375	1
QPMT6416PPEN-H	•	•	0.750	0.250	0.375	2
QPMT8424PPEN	•	•	1.000	0.250	0.500	1
QPMT8424PPEN-H	•	•	1.000	0.250	0.500	2

"H" denotes inserts with heavy edge preparation.

Hardware

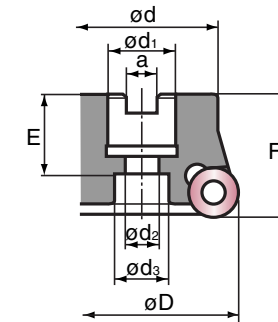
Catalog Number	Screw	Wrench
WRCW38□□□R□	BFTX03584	TRD15
WRCW50□□□R□	BFTX0409N	TRD15

Torque specification for BFTX03584 is 27-31 inch/lbs.
Torque specification for BFTX0409N is 27-31 inch/lbs.

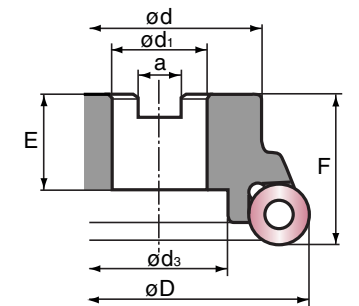


Always make sure that WRC cutters are applied with ramp angles less than or equal to those listed, or damage will result.

Wave Mill Series Indexable Shell Mills



Style 1



Style 2

WRC Shell Mills

Dimensions (inches)													
Catalog Number	øD	ød	F	ød ₁	ød ₂	ød ₃	E	a	Insert Dia.	No. Inserts	Ramp Angle	Weight lbs.	
WRCS3802R	2.000	1.50	1.75	0.750	0.406	0.609	1.020	0.312	0.375	3	5°30'	0.68	
WRCS5002R	2.000	1.50	1.75	0.750	0.406	0.609	1.020	0.312	0.500	3	7°30'	0.62	
WRCS5002.5R	2.500	1.75	1.75	1.000	.531	0.797	1.020	0.375	0.500	4	5°30'	0.93	
WRCS5003R	3.000	2.25	1.75	1.000	.531	0.797	1.020	0.375	0.500	4	4°	1.68	
WRCS7503R	3.000	2.25	1.75	1.000	.531	0.797	1.020	0.375	0.750	4	7°30'	1.32	
WRCS5004R	4.000	2.87	2.00	1.250	.656	1.000	1.020	0.500	0.500	5	2°30'	3.53	
WRCS7504R	4.000	2.87	2.00	1.250	.656	1.000	1.020	0.500	0.750	5	4°30'	3.11	
WRCS1004R	4.000	2.87	2.00	1.250	.656	1.000	1.020	0.500	1.000	5	6°	2.78	
WRCS7505R	5.000	3.75	2.50	1.500	N/A	2.000	1.060	0.625	0.750	6	3°15'	6.15	
WRCS1005R	5.000	3.75	2.50	1.500	N/A	2.000	1.060	0.625	1.000	6	4°15'	5.64	
WRCS7506R	6.000	4.38	2.50	1.500	N/A	2.000	1.060	0.625	0.750	7	2°30'	9.48	
WRCS1006R	6.000	4.38	2.50	1.500	N/A	2.000	1.060	0.625	1.000	7	3°15'	9.04	

WRC Shell Mills

Sumitomo Cat. No.	Coated		Dimensions (Inches)			
	AC230	AC2310	Insert Dia.	T	Max D.O.C.	Figure
QPMT32.510PPEN	•	•	0.375	0.156	0.1875	1
QPMT32.510PPEN-H	•	•	0.375	0.156	0.1875	2
QPMT4312PPEN	•	•	0.500	0.1875	0.250	1
QPMT4312PPEN-H	•	•	0.500	0.1875	0.250	2
QPMT6416PPEN	•	•	0.750	0.250	0.375	1
QPMT6416PPEN-H	•	•	0.750	0.250	0.375	2
QPMT8424PPEN	•	•	1.000	0.250	0.500	1
QPMT8424PPEN-H	•	•	1.000	0.250	0.500	2

"H" denotes inserts with heavy edge preparation.

Hardware

Catalog Number	Screw	Wrench
WRCS38□□□R□	BFTX3584	TRD15
WRCS50□□□R□	BFTX0409N	TRD15
WRCS75□□□R□	BFTX0513SF	TRD20
WRCS10□□□R□	BFTX0615N	TRD25

Torque specifications for BFTX05384 is 27-31 in/lbs.
Torque specifications for BFTX0409N is 27-31 in/lbs.
Torque specifications for BFTX0513SF is 45-49 in/lbs.
Torque specifications for BFTX0615N is 62-67 in/lbs.

See pages 92-93
For recommended running parameters

