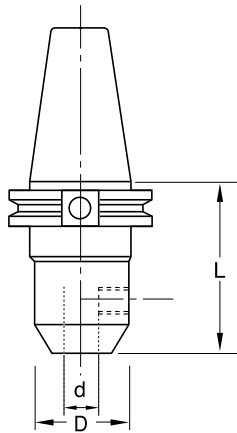


# Milling Adapters & Holders

## End Mill Holders

MILLING



### CT40 END MILL HOLDERS

Inch

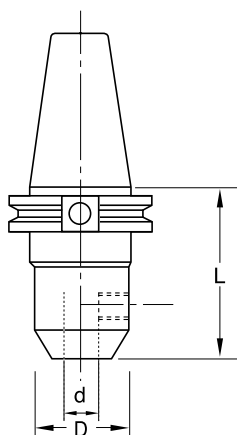
Catalog Number	Taper	d	L	D	Set Screw Size	Retention Knob Thread
CT40-06-125EMH	40	1/8"	2-3/8"	3/4"	6-32x1/4	5/8"-11
CT40-06-187EMH	40	3/16"	2-1/2"	3/4"	8-32x1/4	5/8"-11
CT40-06-250EMH	40	1/4"	2-1/2"	13/16"	1/4-28x1/4	5/8"-11
CT40-06-312EMH	40	5/16"	2-1/2"	7/8"	5/16-24x1/4	5/8"-11
CT40-06-375EMH	40	3/8"	2-1/2"	1"	3/8-24x5/16	5/8"-11
CT40-06-500EMH	40	1/2"	2-1/2"	1-3/8"	7/16-20x3/8	5/8"-11
CT40-06-625EMH	40	5/8"	3"	1-5/8"	9/16-18x1/2	5/8"-11
CT40-06-750EMH	40	3/4"	3"	1-3/4"	5/8-18x1/2	5/8"-11
CT40-06-875EMH	40	7/8"	3-1/2"	2"	5/8-18x1/2**	5/8"-11
CT40-06-1000EMH	40	1"	4"	2-3/8"	3/4-16x11/16**	5/8"-11
CT40-06-1250EMH	40	1-1/4"	4"	2-1/2"	3/4-16x11/16**	5/8"-11
CT40-06-1500EMH	40	1-1/2"	4-1/2"	3"	3/4-16x11/16**	5/8"-11

Metric

Catalog Number	Taper	d	L	D	Set Screw Size	Retention Knob Thread
CT40-06-6EMH	40	6mm	2-1/2"	13/16"	1/4-28x1/4	5/8"-11
CT40-06-8EMH	40	8mm	2-1/2"	7/8"	5/16-24x1/4	5/8"-11
CT40-06-10EMH	40	10mm	2-1/2"	1"	3/8-24x5/16	5/8"-11
CT40-06-12EMH	40	12mm	2-1/2"	1-3/8"	7/16-20x3/8	5/8"-11
CT40-06-18EMH	40	18mm	3"	1-3/4"	5/8-18x1/2	5/8"-11
CT40-06-20EMH	40	20mm	3"	1-3/4"	5/8-18x1/2	5/8"-11
CT40-06-25EMH	40	25mm	4"	2-3/8"	3/4-16x11/16**	5/8"-11
CT40-06-32EMH	40	32mm	4"	2-1/2"	3/4-16x11/16**	5/8"-11

### CT50 END MILL HOLDERS

Inch



Catalog Number	Taper	d	L	D	Set Screw Size	Retention Knob Thread
CT50-06-500EMH	50	1/2"	2-5/8"	1-3/8"	7/16-20x3/8	1"-8
CT50-06-625EMH	50	5/8"	3"	1-5/8"	9/16-18x1/2	1"-8
CT50-06-750EMH	50	3/4"	3"	1-7/8"	5/8-18x1/2	1"-8
CT50-06-875EMH	50	7/8"	3-3/4"	2"	5/8-18x1/2**	1"-8
CT50-06-1000EMH	50	1"	4"	2-3/8"	3/4-16x11/16**	1"-8
CT50-06-1250EMH	50	1-1/4"	4"	2-1/2"	3/4-16x11/16**	1"-8
CT50-06-1500EMH	50	1-1/2"	4-1/2"	3"	3/4-16x11/16**	1"-8
CT50-06-2000EMH	50	2"	5-3/8"	3-3/4"	1-14x7/8**	1"-8

Metric

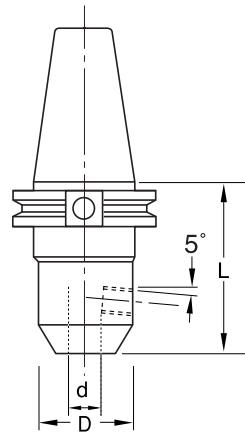
Catalog Number	Taper	d	L	D	Set Screw Size	Retention Knob Thread
CT50-06-16EMH	50	16mm	3"	1-5/8"	9/16-18x1/2	1"-8
CT50-06-18EMH	50	18mm	3"	1-7/8"	5/8-18x1/2	1"-8
CT50-06-20EMH	50	20mm	3"	1-7/8"	5/8-18x1/2	1"-8
CT50-06-25EMH	50	25mm	4"	2-3/8"	3/4-16x11/16**	1"-8
CT50-06-32EMH	50	32mm	4"	2-1/2"	3/4-16x11/16**	1"-8

\* Additional styles and sizes available on request.

\*\* (2) Required for these holders

# Milling Adapters & Holders

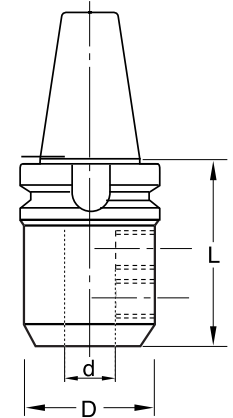
## End Mill Holders



### CT50 AEROSPACE END MILL HOLDERS

Inch

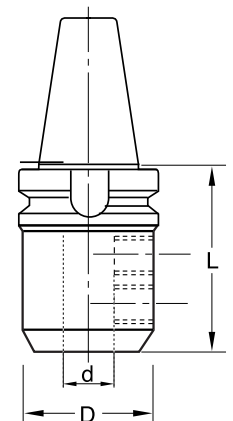
Catalog Number	Taper	d	L	D	Set Screw Size	Retention Knob Thread
CT50-06-375AEMH	50	3/8"	2-13/16"	1-3/8"	3/8-24UNF	1"-8
CT50-06-500AEMH	50	1/2"	2-3/4"	1-5/8"	3/8-24UNF	1"-8
CT50-06-625AEMH	50	5/8"	2-11/16"	1-13/16"	1/2-20UNF	1"-8
CT50-06-750AEMH	50	3/4"	2-5/8"	2"	1/2-20UNF	1"-8
CT50-06-875AEMH	50	7/8"	2-5/8"	2-1/4"	1/2-20UNF	1"-8
CT50-06-1000AEMH	50	1"	3"	2-5/8"	3/4-16UNF	1"-8
CT50-06-1250AEMH	50	1-1/4"	3"	2-7/8"	3/4-16UNF	1"-8
CT50-06-1500AEMH	50	1-1/2"	4"	3-1/4"	3/4-16UNF	1"-8
CT50-06-2000AEMH	50	2"	5-3/8"	4"	3/4-16UNF**	1"-8



### BT40 END MILL HOLDERS

Inch

Catalog Number	Taper	d	L	D	Set Screw Size	Retention Knob Thread
BT40-06-125EMH	40	1/8"	2-3/8"	3/4"	6-32x1/4	M16P2
BT40-06-187EMH	40	3/16"	2-1/2"	3/4"	6-32x1/4	M16P2
BT40-06-250EMH	40	1/4"	2-1/2"	13/16"	1/4-28x1/4	M16P2
BT40-06-312EMH	40	5/16"	2-1/2"	7/8"	5/16-24x1/4	M16P2
BT40-06-375EMH	40	3/8"	2-1/2"	1"	3/8-24x5/16	M16P2
BT40-06-500EMH	40	1/2"	2-1/2"	1-3/8"	7/16-20x3/8	M16P2
BT40-06-625EMH	40	5/8"	2-1/2"	1-11/16"	9/16-20x1/2	M16P2
BT40-06-750EMH	40	3/4"	2-1/2"	1-7/8"	5/8-18x1/2	M16P2
BT40-06-875EMH	40	7/8"	3-3/8"	2"	5/8-18x1/2**	M16P2
BT40-06-1000EMH	40	1"	3-9/16"	2-3/8"	3/4-16x11/16**	M16P2
BT40-06-1250EMH	40	1-1/4"	3-9/16"	2-1/2"	3/4-16x11/16**	M16P2
BT40-06-1500EMH	40	1-1/2"	4-1/2"	3"	3/4-16x11/16**	M16P2



### BT50 END MILL HOLDERS

Inch

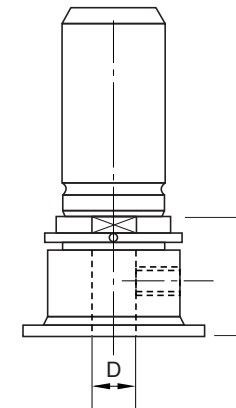
Catalog Number	Taper	d	L	D	Set Screw Size	Retention Knob Thread
BT50-06-500EMH	50	1/2"	3"	1-3/8"	7/16-20x3/8	M24P3
BT50-06-625EMH	50	5/8"	3"	1-11/16"	5/8-18x1/2	M24P3
BT50-06-750EMH	50	3/4"	3"	1-7/8"	5/8-18x1/2	M24P3
BT50-06-875EMH	50	7/8"	4"	2"	5/8-18x1/2	M24P3
BT50-06-1000EMH	50	1"	4"	2-3/8"	3/4-16x11/16**	M24P3
BT50-06-1250EMH	50	1-1/4"	4"	2-1/2"	3/4-16x11/16**	M24P3
BT50-06-1500EMH	50	1-1/2"	4-1/2"	3"	3/4-16x11/16**	M24P3
BT50-06-2000EMH	50	2"	5"	3-3/4"	1-14x7/8**	M24P3

All holders are available with flange coolant DIN specification 69871 Form (B).

\*\* (2) Required for these holders

# Milling Adapters & Holders

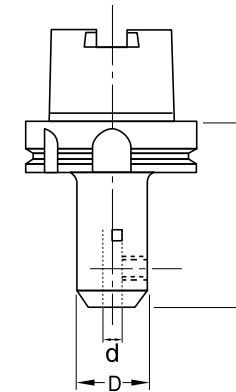
## End Mill Holders



### K & T Series 200 END MILL HOLDERS

Inch

Catalog Number	D	L	Set Screw Size
KT20-06-375EMH	3/8"	1-15/16"	3/8-24x5/16
KT20-06-500EMH	1/2"	1-15/16"	7/16-20X3/8
KT20-06-625EMH	5/8"	1-15/16"	1/2-20X5/8
KT20-06-750EMH	3/4"	1-15/16"	5/8-18X1/2
KT20-06-875EMH	7/8"	1-15/16"	5/8-18X1/2
KT20-06-1000EMH	1"	1-15/16"	5/8-18X1/2
KT20-06-1250EMH	1-1/4"	1-15/16"	5/8-18X1/2

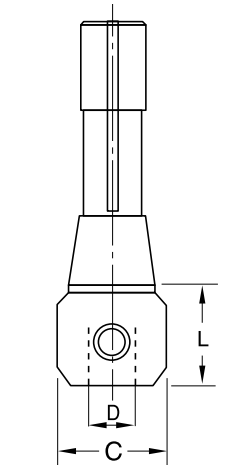


### HSK END MILL HOLDERS

Inch

Catalog Number	Taper	d	L	D	Set Screw Size
HSK63-250-80EMH	HSK-63	1/4"	3-1/8"	1-1/8"	M8P
HSK63-375-90EMH	HSK-63	3/8"	3-7/16"	1-3/8"	M10P
HSK63-500-95EMH	HSK-63	1/2"	3-3/4"	1-5/8"	M12P
HSK63-625-100EMH	HSK-63	5/8"	3-15/16"	1-7/8"	M14P
HSK63-750-100EMH	HSK-63	3/4"	3-15/16"	2-1/16"	M16P
HSK100-375-90EMH	HSK-100	3/8"	3-7/16"	1-3/8"	M10P
HSK100-500-100EMH	HSK-100	1/2"	3-5/16"	1-5/8"	M12P
HSK100-625-105EMH	HSK-100	5/8"	4-1/8"	1-7/8"	M14P
HSK100-750-110EMH	HSK-100	3/4"	4-5/16"	2-1/16"	M16P
HSK100-1000-115EMH	HSK-100	1"	4-1/2"	2-9/16"	M18P
HSK100-1250-120EMH	HSK-100	1-7/16"	4-3/4"	2-13/16"	M20P

Note: Balanceable HSK holders are available upon request.



### R8 END MILL HOLDERS

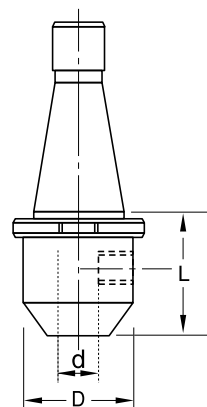
Inch

Catalog Number	D	L	C	Set Screw Size
R8-32-3	1/2"	1-15/16"	1-3/8"	7/16-20x3/8
R8-40-3	5/8"	1-1/2"	1-5/8"	9/16-18x1/2
R8-48-3	3/4"	2-3/8"	1-7/8"	5/8-18x1/2
R8-56-3	7/8"	2-3/4"	2"	5/8-18x1/2**
R8-64-3	1"	3-1/4"	2-3/8"	3/4-16x11/16**
R8-80-3	1-1/4"	3-1/4"	2-1/2"	3/4-16x11/16**
R8-96-3	1-1/2"	3-3/4"	3"	3/4-16x11/16**

\*\* (2) Required for these holders

# Milling Adapters & Holders

## End Mill Holders



### NMTB 30 END MILL HOLDERS

Inch

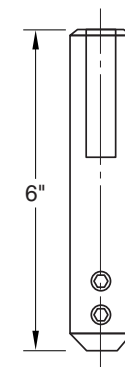
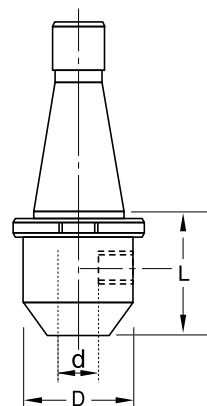
Catalog Number	Taper	d	L	D	Set Screw Size
NMTB30-125EMH	30	1/8"	1-3/4"	3/4"	6-32x1/4
NMTB30-187EMH	30	3/16"	1-3/4"	3/4"	8-32x1/4
NMTB30-250EMH	30	1/4"	1-3/4"	13/16"	1/4-28x1/4
NMTB30-312EMH	30	5/16"	1-3/4"	7/8"	5/16-24x1/4
NMTB30-375EMH	30	3/8"	1-3/4"	1"	3/8-24x5/16
NMTB30-500EMH	30	1/2"	1-3/4"	1-3/8"	7/16-20x3/8
NMTB30-625EMH	30	5/8"	1-3/4"	1-7/16"	9/16-18x1/2
NMTB30-750EMH	30	3/4"	2-1/4"	1-7/8"	5/8-18x1/2
NMTB30-875EMH	30	7/8"	2-1/2"	2"	5/8-18x1/2**
NMTB30-1000EMH	30	1"	2-11/16"	2-3/8"	3/4-16x11/16**
NMTB30-1250EMH	30	1-1/4"	3-5/8"	2-1/2"	3/4-16x11/16**

### NMTB 40 END MILL HOLDERS

Inch

Catalog Number	Taper	d	L	D	Set Screw Size
NMTB40-125EMH	40	1/8"	2-5/16"	3/4"	6-32x1/4
NMTB40-187EMH	40	3/16"	2-5/16"	3/4"	8-32x1/4
NMTB40-250EMH	40	1/4"	2-5/16"	13/16"	1/4-28x1/4
NMTB40-312EMH	40	5/16"	2-5/16"	7/8"	5/16-24x1/4
NMTB40-375EMH	40	3/8"	2-5/16"	1"	3/8-24x5/16
NMTB40-500EMH	40	1/2"	2-5/16"	1-3/8"	7/16-20x3/8
NMTB40-625EMH	40	5/8"	2-5/16"	1-11/16"	9/16-18x1/2
NMTB40-750EMH	40	3/4"	2-5/16"	1-7/8"	5/8-18x1/2
NMTB40-875EMH	40	7/8"	2-15/16"	2"	5/8-18x1/2**
NMTB40-1000EMH	40	1"	3-3/8"	2-3/8"	3/4-16x11/16**
NMTB40-1250EMH	40	1-1/4"	3-11/16"	2-1/2"	3/4-16x11/16**
NMTB40-1500EMH	40	1-1/2"	3-15/16"	3"	3/4-16x11/16**

\*\* (2) Required for these holders.



### END MILL HOLDER EXTENSIONS - STRAIGHT SHANK

Inch

Catalog Number	End Mill Size	Shank Diameter	Set Screw Size
S75-125EMHE	3/8"	3/4"	6-32x1/4
S75-187EMHE	3/16"	3/4"	8-32x1/4
S75-250EMHE	1/4"	3/4"	1/4-28x1/4
S75-312EMHE	5/16"	3/4"	5/16-24x5/16
S10-375EMHE	3/8"	1"	3/8-24x5/16
S10-500EMHE	1/2"	1"	7/16-20x3/8**

### REPLACEMENT SET SCREWS

End Mill Holders

Catalog Number	Size of Holder I.D.
RSS6-32x1/4	1/8"
RSS8-32x1/4	3/16"
RSS1/4-28x1/4	1/4", 6mm
RSS5/16-24x1/4	5/16", 6mm
RSS3/8-24x5/16	3/8", 7/16", 6mm
RSS7/16-20x3/8	1/2", 12mm
RSS9/16-18x1/2	5/8", 16mm
RSS5/8-18x1/2	3/4", 7/8", 18-20mm
RSS3/4-16x11/16	1"-1-1/2", 25-42mm
RSS1-14x7/8	2" & 2-1/2"

\*\* (2) Required for these holders

Aerospace End Mill Holders

Catalog Number	Size of Holder I.D.
RSS3/8-24UNF	3/8" & 1/2"
RSS1/2-20UNF	5/8" & 7/8"
RSS3/4-16UNF	1"-2-1/2"



*Sumitomo products are manufactured to be the best in the industry. Top shelf quality everytime.*

