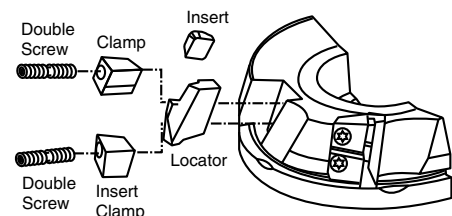
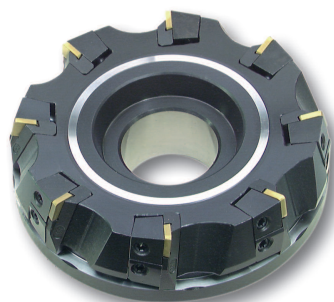


sumiMill Series Indexable Shell Mills

Double Positive Face Mill



DPG 400 Face Mill Series

Catalog Number	Dimensions							No. of Teeth	Max. D.O.C.	Fig.	I.C.
	D	D ₁	F	d	a	b	E				
DPG403R	3.125	3.54	1.969	1.000	0.375	0.250	1.000	.445	1	1/2	
DPG404R*	4.500	4.84	2.362	1.500	0.625	0.406	1.500				
DPG406R**	6.125	6.57	2.362	2.000	0.750	0.437	1.500		2		
DPG408R	8.000	8.30	2.756	2.000	1.000	1.625	1.500				
DPG410R	10.000	10.20	2.756	2.000	1.000	1.625	1.575		3		
DPG412R	12.500	12.80	2.756	2.000	1.000	1.625	1.575				

*Requires BFX3/4x16 arbor screw

**Requires BFX1x14 arbor screw

Inserts

Sumitomo Cat. No.	Figure 1			Figure 2			Figure 3		
	Coated	Uncoated	Ceramic	I.C.	T	Facet Width	R	Figure	
SPCH42R	•			0.500	0.125	0.125	N/A	1	
SPCH42TR	•			0.500	0.125	N/A		2	
SPCH42TL	•			0.500	0.125	N/A		3	
SPG421	•			0.480	0.126	0.126	N/A		
SPG422	•								
SPG423	•								
SPG424	•								
SPMN421	•								
SPMN422	•								
SPMN423	•								
SPMN424	•								
DPW500R	•								

"T" denotes inserts with a T-Land.

Hardware

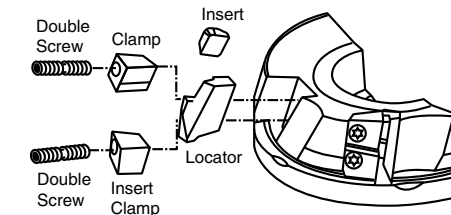
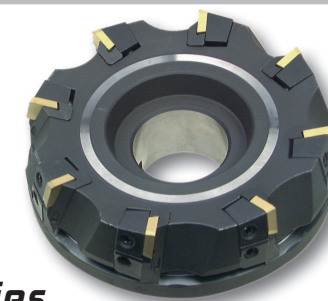
Catalog Number	Locator	Locator Clamp	Insert Clamp	Clamp Bolt	Wrench
DPG403R		GLW40R	GTW40R	WB830T	TT27
DPG404R		GLW41R	GTW41R	WB824T	
DPG406R		GLW42R	GTW42R	WB830T	
DPG408R					
DPG410R					
DPG412R					

Torque specifications for locator clamp (WB830T)=71-75 in/lbs.
Torque specifications for insert clamp (WB830T)=57-62 in/lbs.

See pages 92-93
For recommended running parameters

sumiMill Series Indexable Shell Mills

Double Positive Face Mill



DPG 500 Face Mill Series

Catalog Number	Dimensions							No. of Teeth	Max. D.O.C.	Fig.	I.C.
	D	D ₁	F	d	a	b	E				
DPG503R	3.250	3.540	1.988	1.000	0.375	0.250	1.000	.563	1	.625	
DPG504R*	4.500	4.840	2.382	1.500	0.625	0.406	1.500				
DPG506R**	6.250	6.570	2.382	2.000	0.750	0.437	1.500		2		
DPG508R	8.000	8.300	2.776	2.000	0.750	1.625	1.500				
DPG510R	10.000	10.200	2.776	2.000	1.000	1.625	1.575		3		
DPG512R	12.500	12.800	2.776	2.000	1.000	1.625	1.575				

*Requires BFX3/4x16 arbor screw

**Requires BFX1x14 arbor screw

Inserts

Sumitomo Cat. No.	Figure 1			Figure 2			Dimensions (Inches)				
	Coated	Uncoated	Ceramic	I.C.	T	Facet Width	R	Figure			
SPCH53R	•			0.625	0.1875	0.1875	N/A	1			
SPCH53TR	•			0.625	0.1875	N/A	0.0469	2			
SPCH53TRR	•			0.625	0.1875	N/A	0.0469				
SPG533	•										
SPMN533	•										

"T" denotes inserts with a T-Land.

Hardware

Catalog Number	Locator	Locator Clamp	Insert Clamp	Clamp Bolt	Wrench
DPG503R		GLW50R	GTW50R	WB830T	TT27
DPG504R		GLW51R	GTW51R	WB824T	
DPG506R		GLW52R	GTW52R	WB830T	
DPG508R					
DPG510R					
DPG512R					

Torque specifications for locator clamp (WB830T)=71-75 in/lbs.
Torque specifications for insert clamp (WB830T)=57-62 in/lbs.