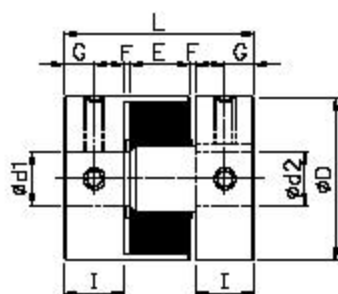
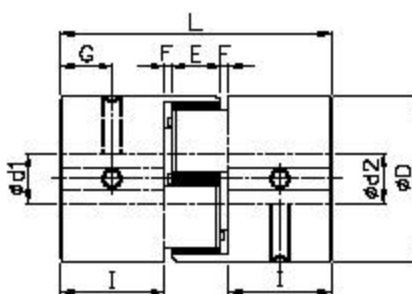


# SRJ

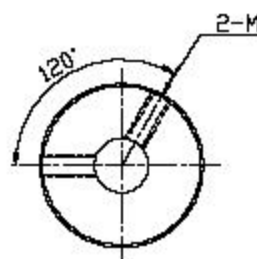
COUPLING/ JAW SET SCREW TYPE



$\phi 20 \sim \phi 30$



$\phi 40 \sim \phi 55$



## ◆ Dimension

Unit : mm

Catalog Number	D	I	L	E	F	G	M	Wrench Torque (N.m)	Mass** (g)
SRJ-20-RD	20	10	30	8	1	5	M3	0.7	18
SRJ-30-RD	30	11	35	10	1.5	5.5	M4	1.7	46
SRJ-40-RD	40	25	66	12	2	12.5	M5	4	180
SRJ-40S-RD	40	14	42	12	2	7	M5	4	150
SRJ-55-RD	55	30	78	14	2	15	M6	7	350
SRJ-65-RD	65	35	90	15	2.5	17.5	M8	15	570

## ◆ Function

Catalog Number	Max. Bore (mm)	Rated Torque (N.m)	Max. Torque (N.m)	Max. Rotational Frequency ( $\text{min}^{-1}$ )	Moment* of Inertia ( $\text{kg} \cdot \text{M}^2$ )	Static Torsional Stiffness (N.m/rad)	Errors of Eccentricity (mm)	Errors of Angularity ( $^{\circ}$ )
SRJ-20-RD	9.525	5	10	19000	$1.0 \times 10^{-8}$	55	0.10	1.0
SRJ-30-RD	14	12.5	25	13000	$5.9 \times 10^{-8}$	130	0.10	1.0
SRJ-40-RD	20	17	34	9600	$4.0 \times 10^{-5}$	1200	0.10	1.0
SRJ-40S-RD	20	17	34	9600	$4.0 \times 10^{-5}$	1200	0.10	1.0
SRJ-55-RD	25	60	120	7000	$1.7 \times 10^{-4}$	2600	0.10	1.0
SRJ-65-RD	30	160	320	5900	$3.9 \times 10^{-4}$	4900	0.10	1.0

Catalog Number	Stock Bores $d1 \times d2$ (H8)																		
	3	4	5	6	6.35	7	8	9.525	10	11	12	14	15	16	18	19	20	25	
SRJ-20-RD			•	•	•	•	•	•											
SRJ-30-RD						•	•	•	•	•	•	•							
SRJ-40-RD									•	•	•	•	•	•					
SRJ-40S-RD									•	•	•	•	•	•					
SRJ-55-RD													•	•	•	•	•	•	•
SRJ-65-RD													•	•	•	•	•	•	•

◆ Material: Aluminum alloy

◆ Character

1. High torque
2. High rigid
3. High vibration resistance
4. Applicable for the ordinary transferring and cutting demand
5. Buffer Material : Engineering class plastic
6. Fixed mode: Set screw type

◆ Product NO:

**SRJ-20-RD -  $\phi 6 \times \phi 6$**

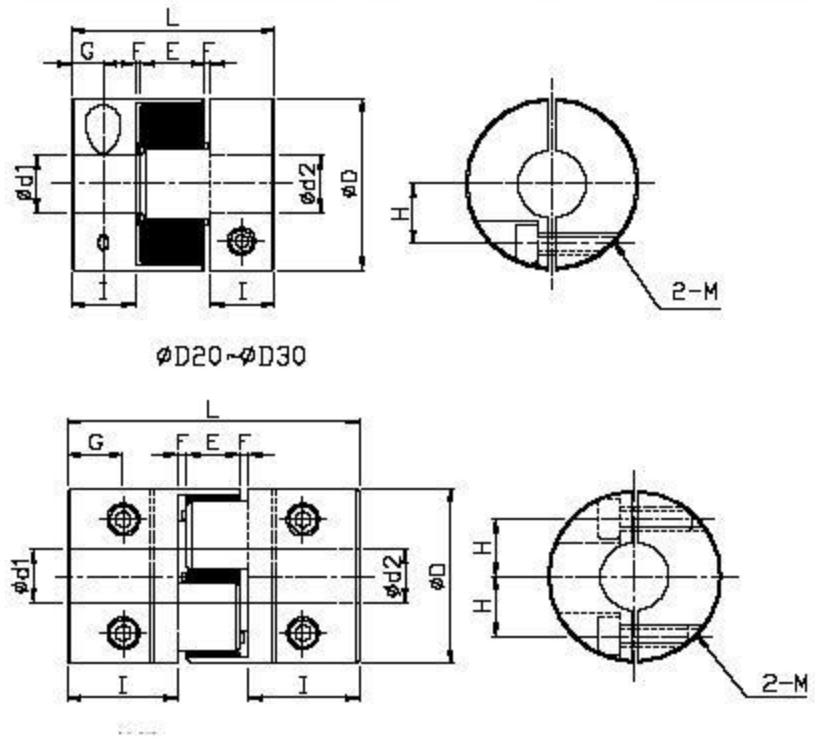
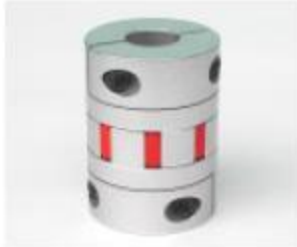
Type

Inside dia



# SRJ - C

COUPLING / JAW CLAMP TYPE



## ◆ Dimension

Unit : mm

Catalog Number	D	I	L	E	F	G	H	M	d1xd2 (H8)		Mass** (g)
									Min	Max	
SRJ-20C-RD	20	10	30	8	1	5	6.5	M2.5	5	8	19
SRJ-30C-RD	30	11	35	10	1.5	5.5	10	M4	6	14	50
SRJ-40C-RD	40	25	66	12	2	8.5	14	M5	10	16	160
SRJ-55C-RD	55	30	78	14	2	10.5	20	M6	15	25	330
SRJ-65C-RD	65	35	90	15	2.5	13	24	M8	15	35	560

## ◆ Function

Catalog Number	Rated Torque (N.m)	Max. Torque (N.m)	Max. Rotational Frequency (min <sup>-1</sup> )	Monment* of Inertia (kg · M <sup>2</sup> )	Static Torsional Stiffness (N.m/rad)	Errors of Eccentricity (mm)	Errors of Angularity (°)	Errors of Shaft End-Play (mm)
SRJ-20C-RD	5	10	7600	1.1×10 <sup>-5</sup>	55	0.10	1.0	±0.4
SRJ-30C-RD	12.5	25	5100	6.2×10 <sup>-6</sup>	130	0.10	1.0	±0.5
SRJ-40C-RD	17	34	3800	3.9×10 <sup>-5</sup>	1200	0.10	1.0	±0.6
SRJ-55C-RD	60	120	2800	1.6×10 <sup>-4</sup>	2600	0.10	1.0	±0.7
SRJ-65C-RD	160	320	2350	3.8×10 <sup>-4</sup>	4900	0.10	1.0	±0.75

◆ Material: Aluminum alloy

## ◆ Features

1. High torque.
2. High rigid.
3. Anti-seismic.
4. Applicable for the ordinary transferring and cutting demand.
5. Buffer Material : Engineering class plastic.
6. Fixed mode : Clamp type.

◆ Product NO:

**SRJ-20C-RD - Ø6xØ6**

Type

Inside dia

