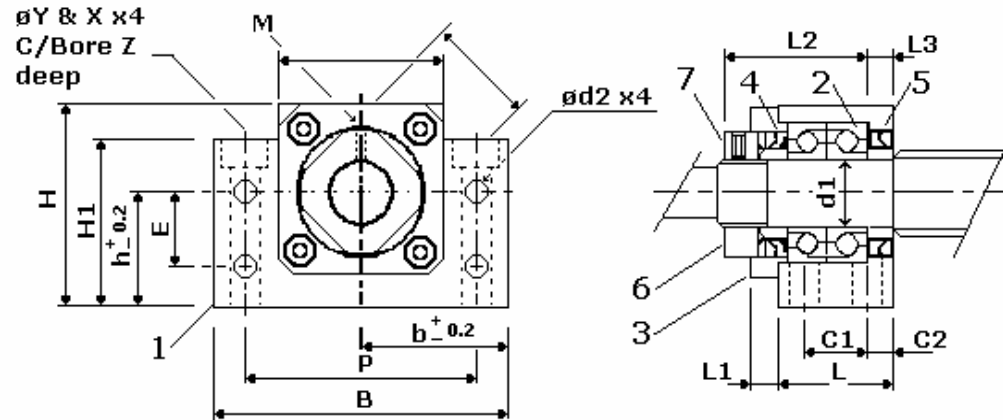


Support Unit BK

Fixed Side – Rectangular Type

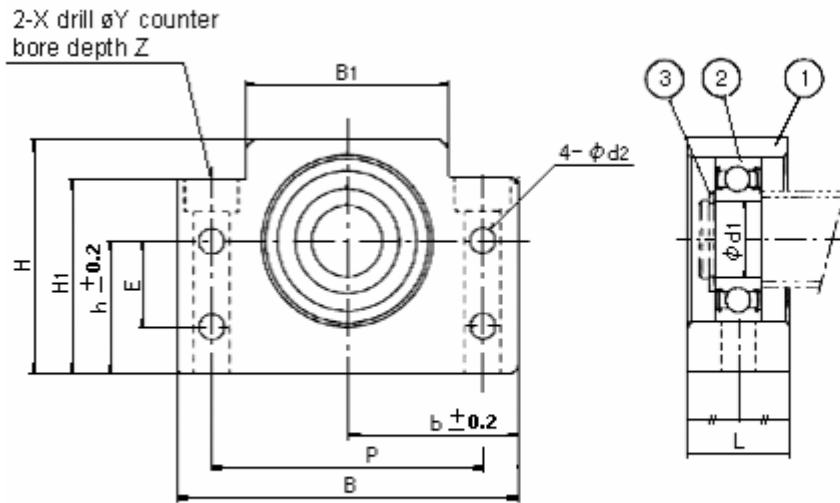


Part No	Part Name	Qty
1	Housing	1
2	Bearing	1 set
3	Holding lid	1
4	Collar	2
5	Seal	2
6	Lock nut	1 set
7	Setscrew	1

Model No.	Bearing	d1	L	L1	L2	L3	B	H	b	h	B1	H1	E	P	C1	C2	d2	X	Y	Z	M	T
BK10	7000A	10	25	5	29	5	60	39	30	22	34	33	15	46	13	6	5.5	6.6	11	5	M3	16
BK12	7001A	12	25	5	29	5	60	43	30	25	35	33	18	46	13	6	5.5	6.6	11	6.5	M3	19
BK15	7002A	15	27	6	32	6	70	48	35	28	40	38	18	54	15	6	5.5	6.6	11	6.5	M3	22
BK17	7203A	17	35	9	44	7	86	64	43	39	50	55	28	68	19	8	6.6	9	14	8.5	M4	24
BK20	7004A	20	35	8	43	8	88	60	44	34	52	50	22	70	19	8	6.6	9	14	8.5	M4	30
BK25	7205B	25	42	12	54	9	106	80	53	48	64	70	33	85	22	10	9	11	17.5	11	M5	35
BK30	7206B	30	45	14	61	9	128	89	64	51	76	78	33	102	23	11	11	14	20	13	M6	40
BK35	7207B	35	50	14	67	12	140	96	70	52	88	79	35	114	26	12	11	14	20	13	M8	50
BK40	7208B	40	61	18	76	15	160	110	80	60	100	90	37	130	33	14	14	18	26	18	M8	50

Support Unit BF

Supported Side – Rectangular Type

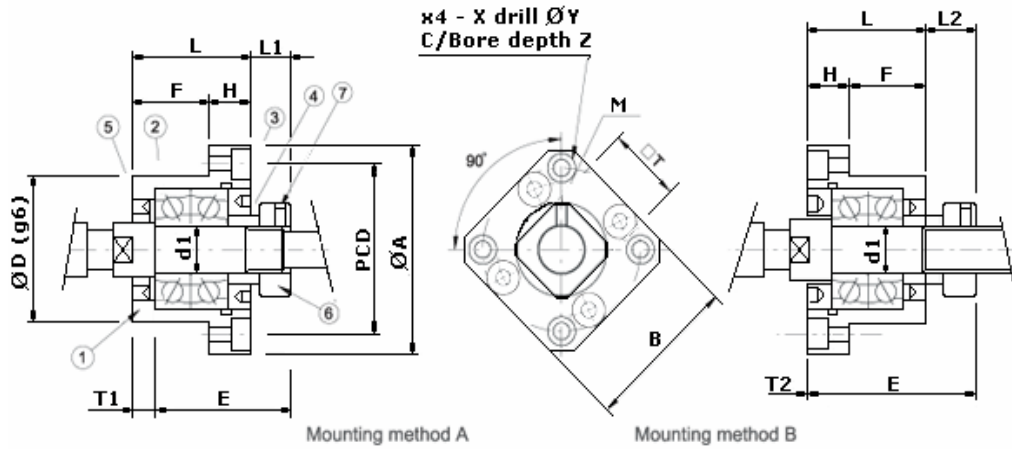


Model No.	d1	L	B	H	b	h	B1	H1	E	P	d2	X	Y	Z	Bearing	Snap ring
BF10	8	20	60	39	30	22	34	32.5	15	46	5.5	6.6	11	5	608ZZ	S 08
BF12	10	20	60	43	30	25	35	32.5	18	46	5.5	6.6	11	6.5	6000ZZ	S 10
BF15	15	20	70	48	35	28	40	38	18	54	5.5	6.6	11	6.5	6002ZZ	S 15
BF17	17	23	86	64	43	39	50	55	28	68	6.6	9	14	8.5	6203ZZ	S 17
BF20	20	26	88	60	44	34	52	50	22	70	6.6	9	14	8.5	6004ZZ	S 20
BF25	25	30	106	80	53	48	64	70	33	85	9	11	17.5	11	6205ZZ	S 25
BF30	30	32	128	89	64	51	76	78	33	102	11	14	20	13	6206ZZ	S 30
BF35	35	32	140	96	70	52	88	79	35	114	11	14	20	13	6207ZZ	S 35
BF40	40	37	160	110	80	60	100	90	37	130	14	18	26	17.5	6208ZZ	S 40

Part No	Part Name	Qty
1	Housing	1
2	Bearing	1 set
3	Snap ring	1

Support Unit FK 05 TO 08.

(Fixed Side – Round Type)

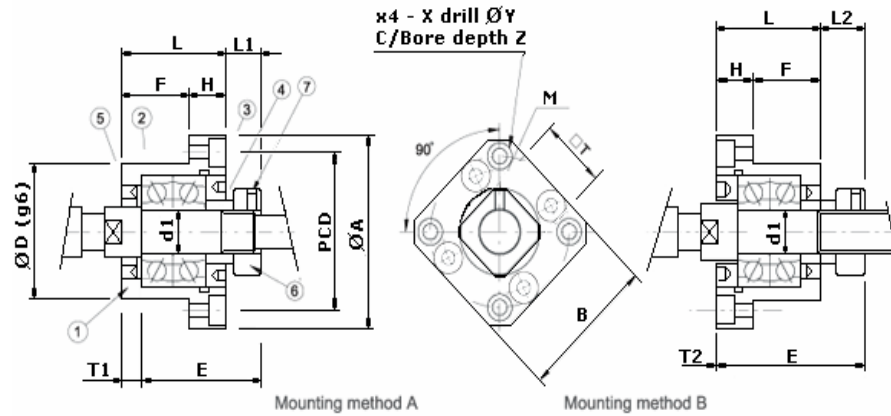


Part No.	Part Name	Qty
1	Housing	1
2	Bearing	1 set
3	Holding lid	1
4	Collar	2
5	Seal	1 (2)
6	Lock nut	1
7	Setscrew	1

Model No.	d1	L	H	F	E	D	A	PCD	B	Mounting Method A		Mounting Method B		X	Y	Z
										L1	L2	L1	L2			
FF05	5	16.5	6	10.5	18.5	20 -0.007 -0.020	34	26	26	5.5	3.5	7	5	3.4	6.5	4
FF06	6	20	7	13	22	22 -0.007 -0.020	36	28	28	5.5	3.5	8.5	6.5	3.4	6.5	4
FF08	8	23	9	14	26	28 -0.007 -0.020	43	35	35	7	4	10	7	3.4	6.5	4

Support Unit FK10 to FK30

(Fixed Side – Flange - Round Type)

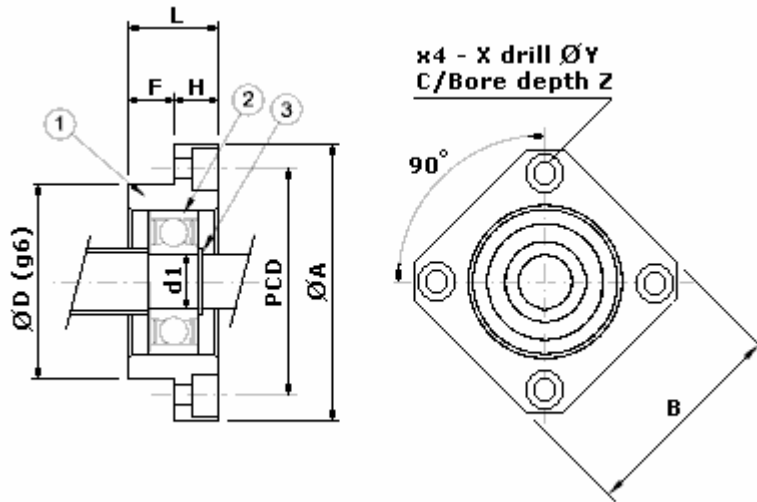


Part No.	Part Name	Qty
1	Housing	1
2	Bearing	1 set
3	Holding lid	1
4	Collar	2
5	Seal	1 (2)
6	Lock nut	1
7	Setscrew	1

Part No.	d1	L	H	F	E	D	A	P C D	B	Mounting Method A		Mounting Method B		X	Y	Z	M	T	
										L1	T1	L2	T2						
FK10	10	27	10	17	29.5	34	-0.009 -0.025	52	42	42	7.5	5	8.5	6	4.5	8	4	M3	16
FK12	12	27	10	17	29.5	36	-0.009 -0.025	54	44	44	7.5	5	8.5	6	4.5	8	4	M3	19
FK15	15	32	15	17	36	40	-0.009 -0.025	63	50	52	10	6	12	8	5.5	9.5	6	M3	22
FK20	20	52	22	30	50	57	-0.010 -0.029	85	70	68	8	10	12	14	6.6	11	10	M4	30
FK25	25	57	27	30	60	63	-0.010 -0.029	98	80	79	13	10	20	17	9	15	13	M5	35
FK30	30	62	30	32	61	75	-0.010 -0.029	117	95	93	11	12	17	18	11	17.5	15	M6	40

Support Unit FF.

Fixed Side – Rectangular Type



Model No.	d1	L	H	F	D	A	PCD	B	X	Y	Z	Bearing	Snap ring
FF06	6	10	6	4	22 -0.007 -0.02	36	28	28	3.4	6.5	4	606ZZ	S06
FF10	8	12	7	5	28 -0.007 -0.02	43	35	35	3.4	6.5	4	608ZZ	S08
FF12	10	15	7	8	34 -0.009 -0.025	52	42	42	4.5	8.0	4	6000ZZ	S10
FF15	15	17	9	8	40 -0.009 -0.025	63	50	52	5.5	9.5	5.5	6002ZZ	S15
FF20	20	20	11	9	57 -0.01 -0.029	85	70	68	5.6	11	6.5	6204ZZ	S20
FF25	25	24	14	10	63 -0.01 -0.029	98	80	79	9	14	8.5	6205ZZ	S25
FF30	30	27	18	9	75 -0.01 -0.029	117	95	93	11	18	11	6206ZZ	S30

Part No.	Part Name	Qty
1	Housing	1
2	Bearing	1 set
3	Snap ring	1