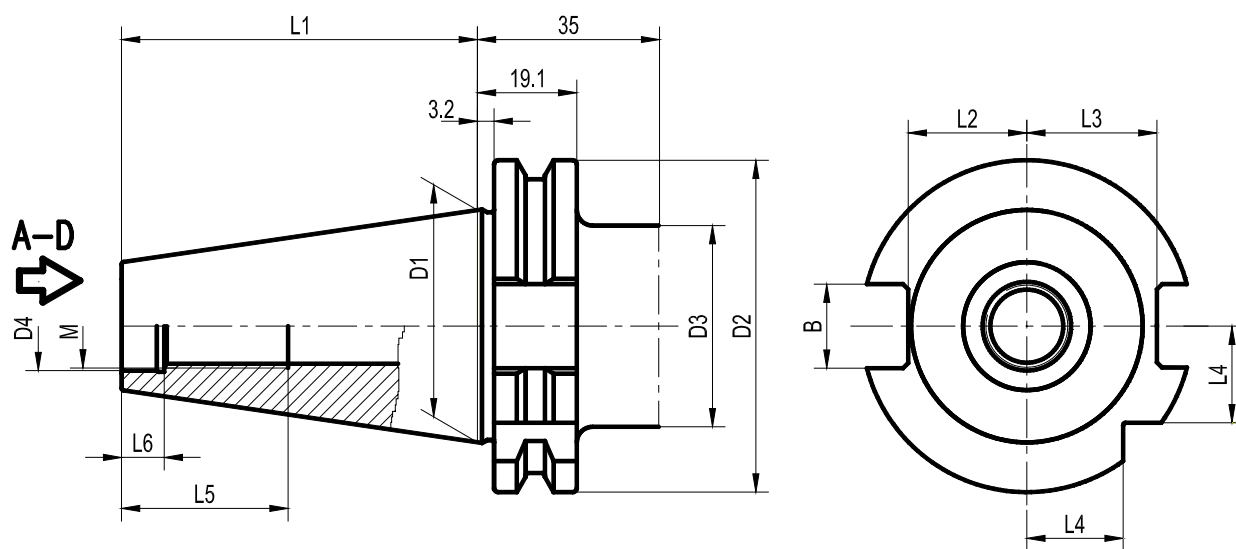


**Meredekkúpos szerszámtartók DIN 69871-AD kúppal
Steilkegel Werkzeugaufnahmen DIN 69871-AD
ISO Taper-Toolholders DIN 69871-AD**



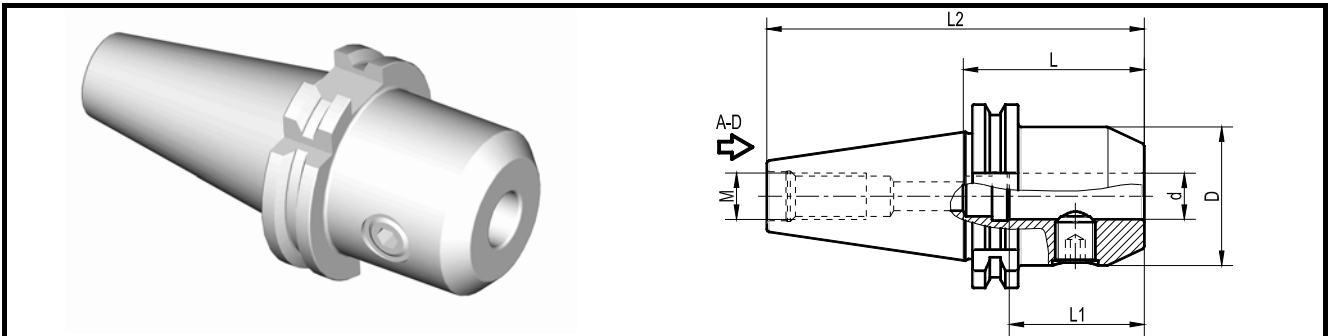
Mérnöki, Szolgáltató és Kereskedelmi Kft.
H-5600 Békéscsaba, Kétegyházi út 3.
Tel.: 36 / 66-442-742 / -125 / -148 Fax: 36 / 66-442-720
www.losonczi.hu

A kúp szögtűrése <AT3, a szerszámoldal egytengelyűsége a kúphoz <0,01
 Kegelwinkel <AT3, Rundlaufgenauigkeit Steilkegel zu Werkzeugaufnahme <0,01
 Taper angle <AT3, concentricity from the taper to the holding part <0,01



SK	D1	D2	D3	D4	M	B	L1	L2	L3	L4	L5	L6
30	31,75	50	45	13	M12	16,1	47,8	16,4	19	15	24	5,5
40	44,45	63,55	50	17	M16	16,1	68,4	22,8	25	18,5	32	8,2
50	69,85	97,5	80	25	M24	25,7	101,75	35,5	37,7	30	47	11

WELDON maróbefogó
Steilkegelaufnahmen WELDON
End mill holder WELDON



SK	d	D	L	L1	L2	M	Tömeg Gewicht Weight	Rendelési kód Bestell-Nummer Order Number
30	6	25	50	35	97,8	M12	0,5	TC30 W6 L50
	8	28	50	35	97,8	M12	0,6	TC30 W8 L50
	10	35	50	39	97,8	M12	0,6	TC30 W10 L50
	12	42	50	44	97,8	M12	0,7	TC30 W12 L50
	14	44	63	44	110,8	M12	0,8	TC30 W14 L63
	16	48	63	47	110,8	M12	0,9	TC30 W16 L63
	18	50	63	47	110,8	M12	0,9	TC30 W18 L63
40	20	52	63	49	110,8	M12	1,0	TC30 W20 L63
	6	25	50	35	118,4	M16	0,9	TC40 W6 L50
	8	28	50	35	118,4	M16	1,0	TC40 W8 L50
	10	35	50	39	118,4	M16	1,1	TC40 W10 L50
	12	42	50	44	118,4	M16	1,1	TC40 W12 L50
	14	44	50	44	118,4	M16	1,1	TC40 W14 L50
	16	48	63	47	131,4	M16	1,4	TC40 W16 L63
	18	50	63	47	131,4	M16	1,4	TC40 W18 L63
50	20	52	63	49	131,4	M16	1,4	TC40 W20 L63
	25	65	100	54	168,4	M16	2,4	TC40 W25 L100
	32	72	100	58	168,4	M16	2,4	TC40 W32 L100
	6	25	63	35	164,7	M24	3,0	TC50 W6 L63
	8	28	63	35	164,7	M24	2,9	TC50 W8 L63
	10	35	63	39	164,7	M24	2,9	TC50 W10 L63
	12	42	63	44	164,7	M24	3,1	TC50 W12 L63
	14	44	63	44	164,7	M24	3,2	TC50 W14 L63
	16	48	63	47	164,7	M24	3,2	TC50 W16 L63
	18	50	63	47	164,7	M24	3,3	TC50 W18 L63
20	52	63	49	164,7	M24	3,2	TC50 W20 L63	
25	65	80	54	181,7	M24	3,9	TC50 W25 L80	
32	72	100	58	201,7	M24	4,6	TC50 W32 L100	
40	78	100	68	201,7	M24	4,9	TC50 W40 L100	

Alkatrészek
Ersatzteile
Spare parts



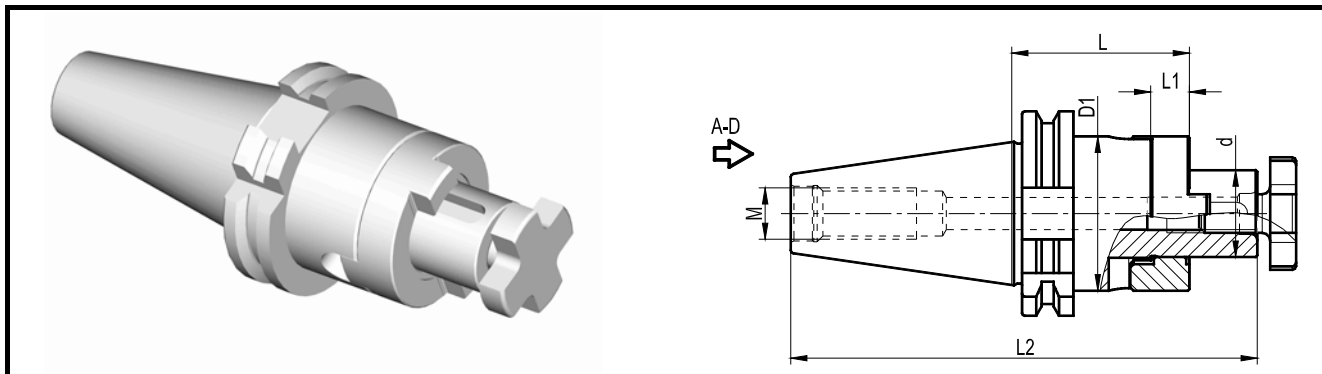
d	Szorítócsavar Spannschraube Locking screw
6	CSW-06010 (1x)
8	CSW-08010 (1x)
10	CSW-10012 (1x)
12,14	CSW-12016 (1x)
16,18	CSW-14016 (1x)
20	CSW-16016 (1x)
25	CSW-18020 (2x)
32	CSW-20020 (2x)
40	CSW-20025 (2x)

Tartozékok
Zubehörteile
Accessories



d	Hatszögkulcs Schlüssel Spanner
6	DS1-3
8	DS1-4
10	DS1-5
12,14	DS1-6
16,18	DS1-6
20	DS1-8
25	DS1-10
32	DS1-10
40	DS1-10

Kombinált marótüske
Kombi-Aufsteckfräserdorne
Universal arbor



SK	d	D1	L	L1	L2	M	Tömeg Gewicht Weight	Rendelési kód Bestell-Nummer Order Number
30	16	32	50	10	114,8	M12	0,6	TC30 D16K L50
	22	40	50	12	116,8	M12	0,7	TC30 D22K L50
	27	48	55	12	123,8	M12	0,8	TC30 D27K L55
40	16	32	55	10	140,4	M16	1,1	TC40 D16K L55
	22	40	55	12	142,4	M16	1,3	TC40 D22K L55
	27	48	55	12	144,4	M16	1,6	TC40 D27K L55
	32	58	60	14	152,4	M16	1,8	TC40 D32K L60
	40	70	60	14	155,4	M16	2,2	TC40 D40K L60
50	16	32	55	10	173,75	M24	3,0	TC50 D16K L55
	22	40	55	12	175,75	M24	3,1	TC50 D22K L55
	27	48	55	12	177,75	M24	3,3	TC50 D27K L55
	32	58	55	14	180,75	M24	3,7	TC50 D32K L55
	40	70	55	14	183,75	M24	4,1	TC50 D40K L55
	50	90	70	16	201,75	M24	5,6	TC50 D50K L70

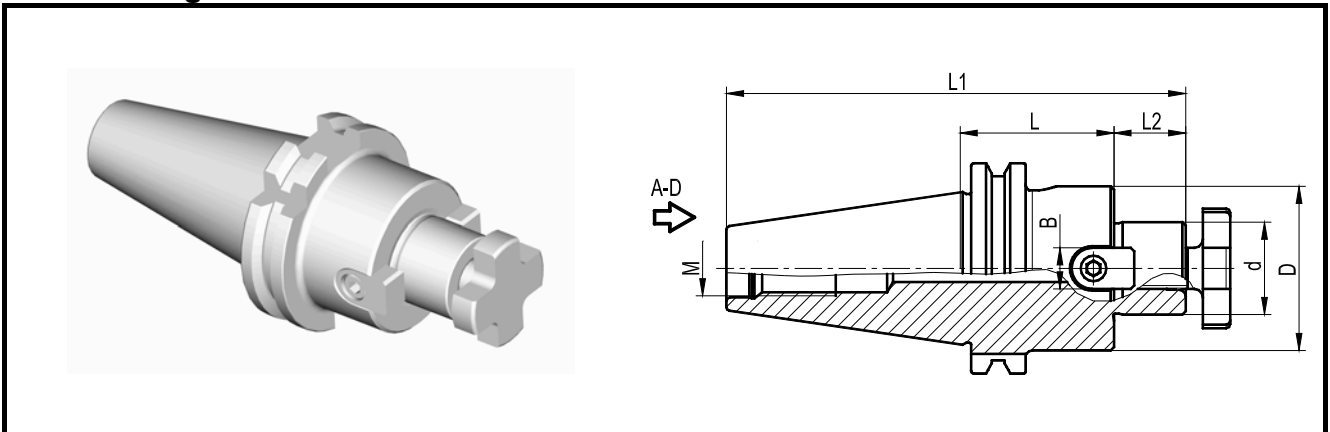
Alkatrészek
Ersatzteile
Spare parts

d	Forgató közgyűrű Mitneherring Driving ring	Közgyűrű Ring Ring	Marórögítő cs. Schraube Screw	Retesz Pasfeder Key
16	RS2-16	RS1-16	CSM-16	RS3-040420
22	RS2-22	RS1-22	CSM-22	RS3-060625
27	RS2-27	RS1-27	CSM-27	RS3-070725
32	RS2-32	RS1-32	CSM32	RS3-070828
40	RS2-40	RS1-40	CSM-40	RS3-081032
50	RS2-50	RS1-50	CSM-50	RS3-081236

Tartozékok
Zubehörsteile
Accessories

d	Átfúrt Csavar Schraube Gebohrt Screw drilled	Kulcs Schlüssel Spanner
16	CAM-1601	DS3-16
22	CAM-2201	DS3-22
27	CAM-2701	DS3-27
32	CAM-3201	DS3-32
40	CAM-4001	DS3-40
50	CAM-5001	DS3-50

Marótüske keresztirányú reteszhoronnyal
Aufsteckfräserdorne für Fräser mit Quernut
Shell milling holders tenon drive



SK	d	D	L	L1	L2	B	M	Tömeg Gewicht Weight	Rendelési kód Bestell-Nummer Order Number
40	22	40	45	132,4	19	10	M16	1,3	TC40 D22MK L45
	27	48	45	134,4	21	12	M16	1,6	TC40 D27MK L45
	32	58	55	147,4	24	14	M16	1,8	TC40 D32MK L55
50	32	58	50	175,75	24	14	M24	3,7	TC50 D32MK L50

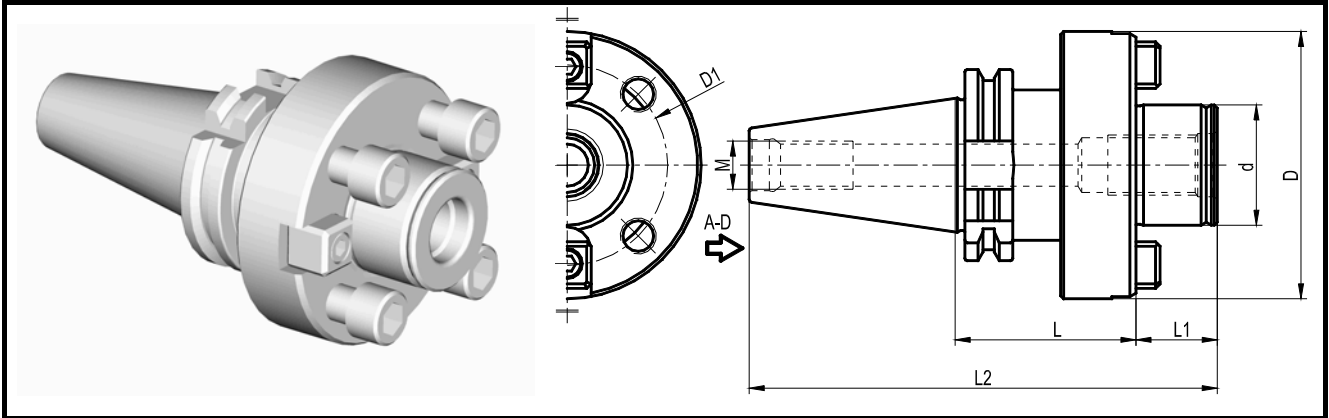
Alkatrészek
Ersatzteile
Spare parts

d	Marórögztő cs. Schraube Screw	Retesz Pasfeder Key	Csavar Schraube Screw
22	CSM-22	RS4-100816	CS1-04008
27	CSM-27	RS4-120918	CS1-05010
32	CSM-32	RS4-141121	CS1-06012

Tartozékok
Zubehörteile
Accessories

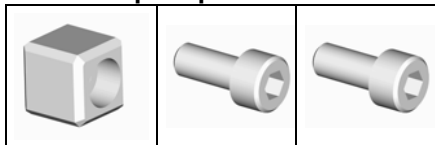
d	Átfúrt Csavar Schraube Gebohrt Screw drilled	Kulcs Schlüssel Spanner	Hatszögkulcs Schlüssel Spanner
22	CAM-2201	DS3-22	DS1-3
27	CAM-2701	DS3-27	DS1-4
32	CAM-3201	DS3-32	DS1-5

Marófej felfogó
Aufnahmen für Planmesserköpfe
Face mill holder



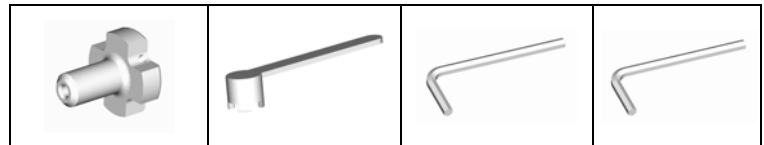
SK	d	D	D1	L	L1	L2	M	Tömeg Gewicht Weight	Rendelési kód Bestell-Nummer Order Number
40	40	88,99	66,7	60	27	155,4	M16	2,2	TC40 D40MK L60
50	40	88,9	66,7	60	27	188,75	M24	4,4	TC50 D40MK L60
	60	128,6	101,6	70	38	209,75	M24	7,0	TC50 D60MK L70

Alkatrészek
Ersatzteile
Spare parts



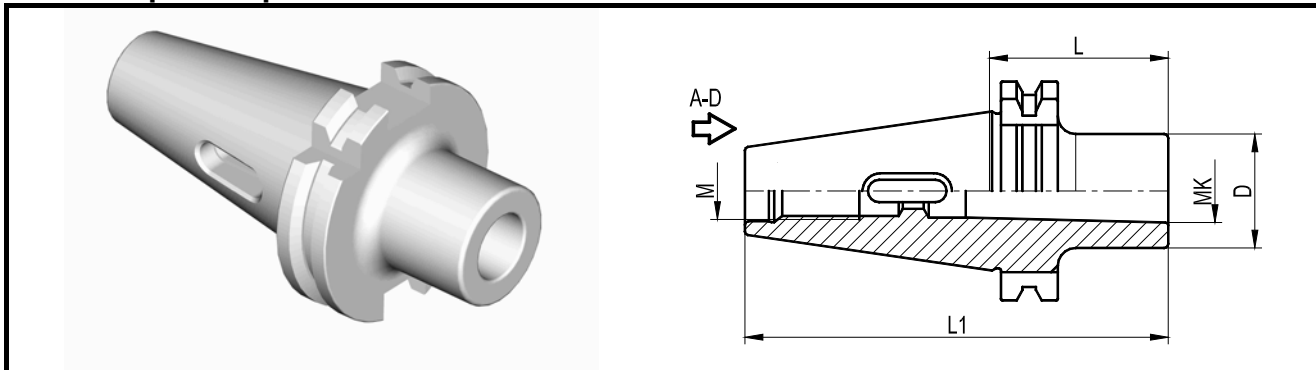
d	Retesz Pasfeder Key	Csavar Schraube Screw	Csavar Schraube Screw
40	RS5-161616	CS1-06016	CS1-12020
60	RS5-252925	CS1-12020	CS1-16025

Tartozékok
Zubehörteile
Accessories



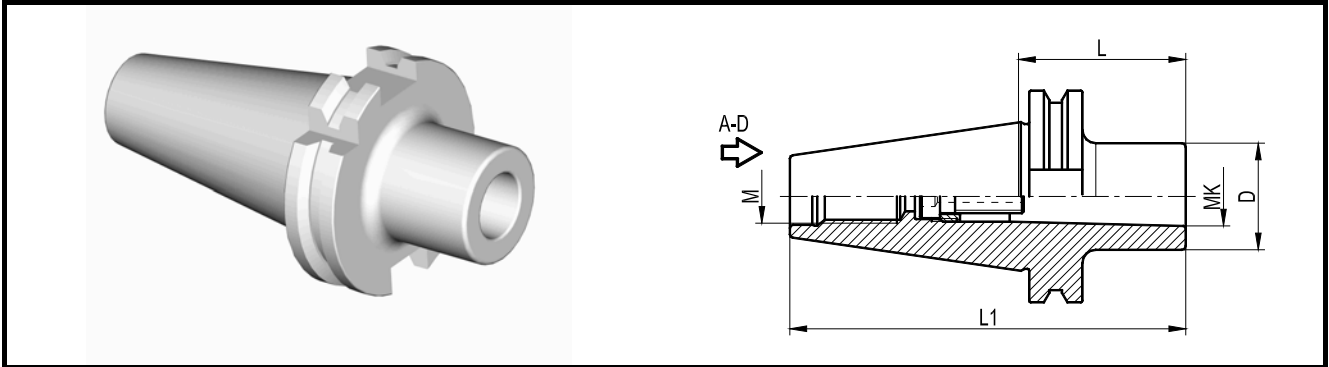
d	Átfúrt Csavar Schraube Gebohrt Screw drilled	Kulcs Schlüssel Spanner	Hatszögkulcs Schlüssel Spanner	Hatszögkulcs Schlüssel Spanner
40	CAM-2201	DS3-22	DS1-5	DS1-10
60	CAM-2701	DS3-27	DS1-10	DS1-14

Morsekúpos átalakító kiütőhoronnyal
 Zwischenhülsen für Morsekegel mit Austreibblappen
 Morse taper adaptors for drills



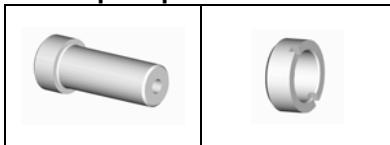
SK	MK	D	L	L1	M	Tömeg Gewicht Weight	Rendelési kód Bestell-Nummer Order Number
30	1	25	50	97,8	M12	0,5	TC30 MKD1 L50
	2	32	60	107,8	M12	0,5	TC30 MKD2 L60
40	1	25	50	118,4	M16	0,9	TC40 MKD1 L50
	2	32	50	118,4	M16	1,0	TC40 MKD2 L50
	3	40	70	138,4	M16	1,1	TC40 MKD3 L70
	4	48	95	163,4	M16	1,2	TC40 MKD4 L95
50	1	25	50	151,7	M24	2,7	TC50 MKD1 L50
	2	32	60	161,7	M24	2,8	TC50 MKD2 L60
	3	40	65	166,7	M24	2,8	TC50 MKD3 L65
	4	48	95	196,7	M24	3,1	TC50 MKD4 L95
	5	63	120	221,7	M24	3,5	TC50 MKD5 L120

Morsekúpos átalakító behúzómenettel
Zwischenhülsen für Morsekegel mit Anzugsgewinde
Morse taper adaptors with thread



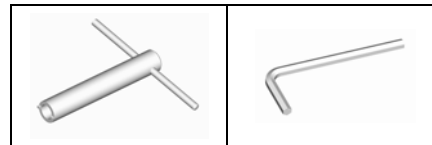
SK	MK	D	L	L1	M	Tömeg Gewicht Weight	Rendelési kód Bestell-Nummer Order Number
30	1	25	50	97,8	M12	0,5	TC30 MKC1 L50
	2	32	60	107,8	M12	0,5	TC30 MKC2 L60
40	1	25	50	118,4	M16	0,9	TC40 MKC1 L50
	2	32	50	118,4	M16	1,0	TC40 MKC2 L50
	3	40	70	138,4	M16	1,1	TC40 MKC3 L70
	4	48	95	163,4	M16	1,2	TC40 MKC4 L95
50	1	25	45	146,7	M24	2,7	TC50 MKC1 L45
	2	32	60	161,7	M24	2,8	TC50 MKC2 L60
	3	40	65	166,7	M24	2,8	TC50 MKC3 L65
	4	48	95	196,7	M24	3,1	TC50 MKC4 L95
	5	63	110	221,7	M24	3,5	TC50 MKC5 L110

Alkatrészek
Ersatzteile
Spare parts



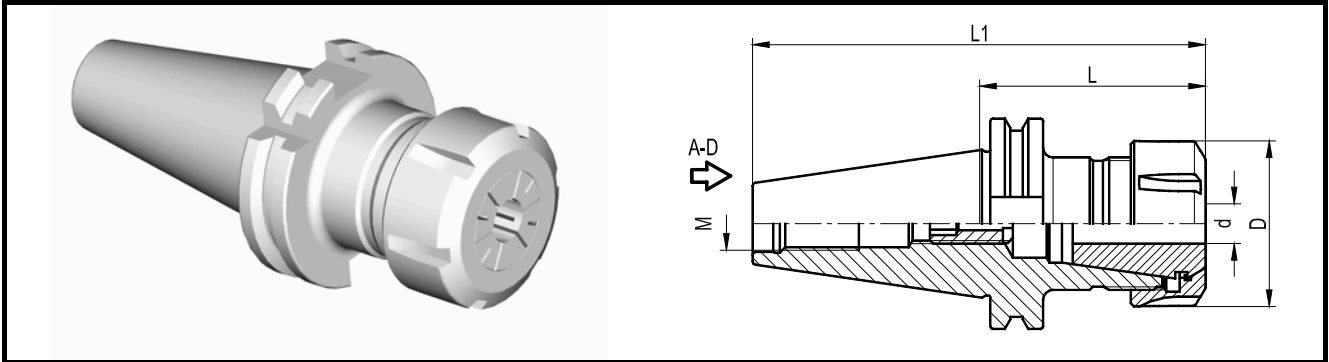
MK	Behúzócsavar Schraube Screw	Támasztó persely Büchse Ring
1/SK30	CA6-06020-02	AE2-100601
1	CA6-06020-02	AE2-120601
2	CA6-10025-01	AE2-150601
3	CA6-12030-01	AE2-200601
4	CA6-16035-01	AE2-240801
5	CA6-20045-01	AE2-361101

Tartozékok
Zubehörsteile
Accessories



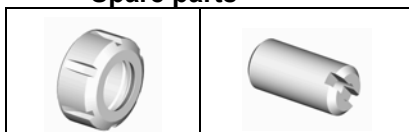
MK	Kulcs Schlüssel Spanner	Kulcs Schlüssel Spanner
1/SK30	DE1-01	DS1-04
1	DE1-01	DS1-04
2	DE1-02	DS1-06
3	DE1-03	DS1-08
4	DE1-04	DS1-12
5	DE1-05	DS1-14

Patronos befogó
Spannzangenfutter
Collet Chucks



SK	ER	L	D	L1	d	M	Tömeg Gewicht Weight	Rendelési kód Bestell-Nummer Order Number
30	16	70	32	117,8	0,5-10	M12	0,7	TC30 ER16 L70
	25	70	42	117,8	0,5-16	M12	0,7	TC30 ER25 L70
	32	70	50	117,8	2-20	M12	0,8	TC30 ER32 L70
40	16	70	32	138,4	0,5-10	M16	1,1	TC40 ER16 L70
	16	100	32	168,4	0,5-10	M16	1,2	TC40 ER16 L100
	16	150	32	218,4	0,5-10	M16	1,4	TC40 ER16 L150
	25	70	42	138,4	0,5-16	M16	1,2	TC40 ER25 L70
	25	100	42	168,4	0,5-16	M16	1,4	TC40 ER25 L100
	25	150	42	218,4	0,5-16	M16	1,7	TC40 ER25 L150
	32	70	50	138,4	2-20	M16	1,4	TC40 ER32 L70
	32	100	50	168,4	2-20	M16	1,6	TC40 ER32 L100
	32	150	50	218,4	2-20	M16	2,0	TC40 ER32 L150
50	40	80	63	148,4	3-30	M16	1,8	TC40 ER40 L80
	40	150	63	218,4	3-30	M16	3,1	TC40 ER40 L150
	32	70	50	171,7	2-20	M24	2,9	TC50 ER32 L70
	40	90	63	191,7	3-30	M24	3,3	TC50 ER40 L90

Alkatrészek
Ersatzteile
Spare parts



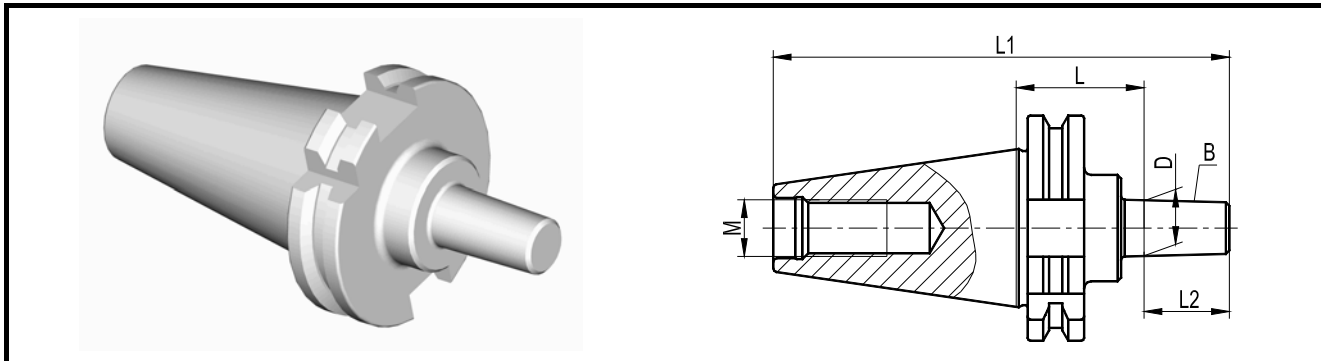
ER	Patron anya Spannmutter Nut	Állítócsavar Anschlagschraube Stopscrew
16	AS1-1601	CA2-06020-01
25	AS1-2501	CA2-12025-01
32	AS1-3201	CA2-12025-01
40	AS1-4001	CA2-14025-01

Tartozékok
Zubehörteile
Accessories



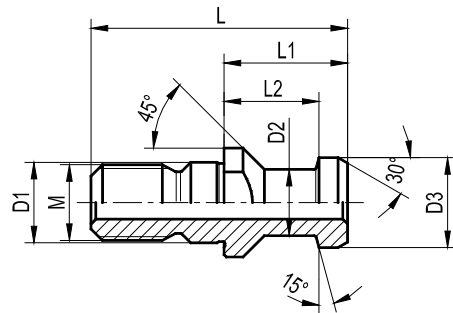
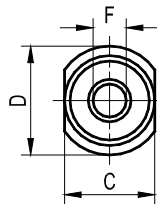
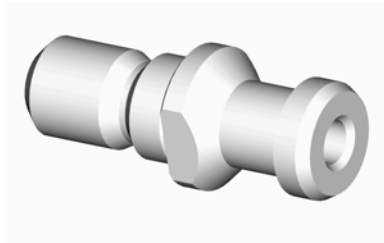
ER	Kulcs Spannschlüssel Spanner	Kulcs Schlüssel Spanner	Patron Spannzangen Collet
16	DE2-16	DS1-03	ER16
25	DE2-25	DS1-06	ER25
32	DE2-32	DS1-06	ER32
40	DE2-40	DS1-06	ER40

Fúrótokmány felfogó
Bohrfutter
Drill Chucks



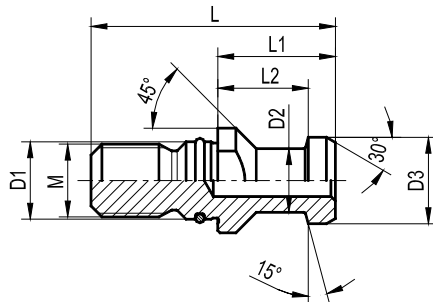
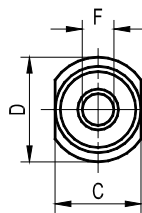
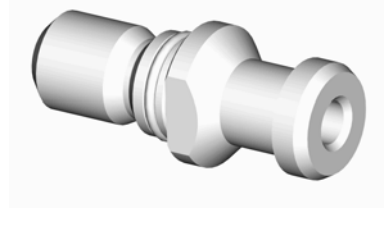
SK	B	L	D	L1	L2	M	Tömeg Gewicht Weight	Rendelési kód Bestell-Nummer Order Number
30	B12	23	12,065	91,3	18,5	M12	0,4	TC30 B12 L25
	B16	25	15,773	96,8	24	M12	0,5	TC30 B16 L25
40	B12	35	12,065	121,9	18,5	M16	0,9	TC40 B12 L35
	B16	36	15,773	127,4	24	M16	1,0	TC40 B16 L35
	B18	36	17,78	135,4	32	M16	1,0	TC40 B18 L35
50	B16	36	15,773	160,7	24	M24	2,8	TC50 B16 L35
	B18	36	17,78	168,7	32	M24	2,8	TC50 B18 L35

Kúpvonócsap DIN 69872 A átfűrt
Spannbolzen DIN 69872 A Gebohrt
DIN 69871 A Pull studs, drilled



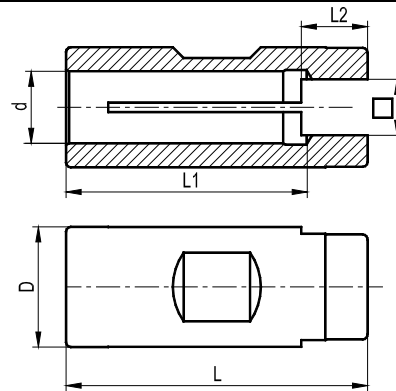
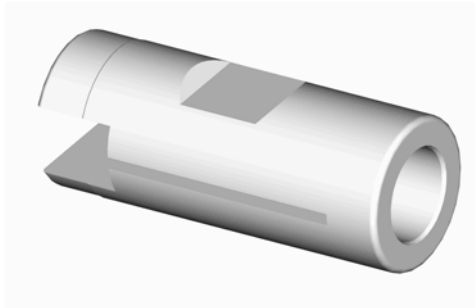
SK	L	L1	L2	D	D1	D2	D3	C	F	M	Tömeg Gewicht Weight	Rendelési kód Bestell-Nummer Order Number
30	44	24	19	17	13	9	13	14	-	M12	0,04	FKC-TCA30-01
40	54	26	20	23	17	14	19	19	7	M16	0,08	FKC-TCA40-01
50	74	34	25	36	25	21	28	30	11,5	M24	0,22	FKC-TCA50-01

Kúpvonócsap DIN 69872 B
Spannbolzen DIN 69872 B
DIN 69871 B Pull studs



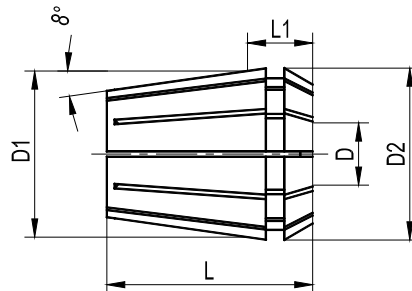
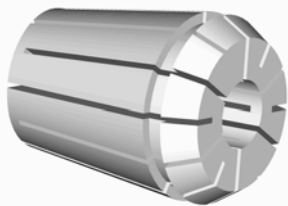
SK	L	L1	L2	D	D1	D2	D3	C	F	M	Tömeg Gewicht Weight	Rendelési kód Bestell-Nummer Order Number
30	44	24	19	17	13	9	13	14	-	M12	0,04	FKC-TCB30-01
40	54	26	20	23	17	14	19	19	7	M16	0,08	FKC-TCB40-01
50	74	34	25	36	25	21	28	30	11,5	M24	0,22	FKC-TCB50-01

Menetfűrőbefogó toldat
Spannhülsen für Gewindebohrer
Adaptor sleeves for tap shanks



D	dx□	L	L1	L2	Tömeg Gewicht Weight	Rendelési kód Bestell-Nummer Order Number
12	6x5,1	45	33	13	0,03	FWM-1206-01
14	7x5,7	45	35	11	0,03	FWM-1407-01
14	8x6,4	45	35	11	0,03	FWM-1408-01
16	9x7,3	48	38	11	0,05	FWM-1609-01
16	10x8,3	48	38	11	0,05	FWM-1610-01
18	11x9,3	48	38	11	0,05	FWM-1811-01
20	12x9,3	50	40	11	0,07	FWM-2012-01
25	14x11,3	56	44	14	0,15	FWM-2514-01
25	16x12,3	56	44	14	0,11	FWM-2516-01
32	18x14,8	60	46	16	0,21	FWM-3218-01

ER patron DIN 6499-B
Spannzangen DIN 6499-B
Collets DIN 6499-B



ER	D1	D	D2	L	L1	Rendelési kód Bestell-Nummer Order Number
16	16	1-10	17	27,5	10,5	ER-16
25	25	1-16	26	34	12	ER-25
32	32	2-20	33	40	13	ER-32
40	40	3-30	41	46	15	ER-40

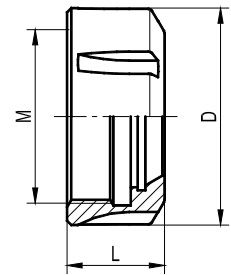
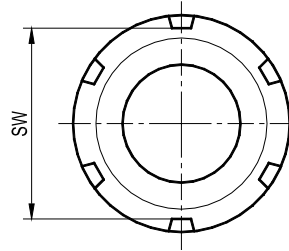
Rendelési kód Bestell-Nummer Order Number
ER-16D1
ER-16D1,5
ER-16D2
ER-16D2,5
ER-16D3
ER-16D4
ER-16D5
ER-16D6
ER-16D7
ER-16D8
ER-16D9
ER-16D10

Rendelési kód Bestell-Nummer Order Number
ER-25D1
ER-25D1,5
ER-25D2
ER-25D2,5
ER-25D3
ER-25D4
ER-25D5
ER-25D6
ER-25D7
ER-25D8
ER-25D9
ER-25D10
ER-25D11
ER-25D12
ER-25D13
ER-25D14
ER-25D15
ER-25D16

Rendelési kód Bestell-Nummer Order Number
ER-32D2
ER-32D2,5
ER-32D3
ER-32D4
ER-32D5
ER-32D6
ER-32D7
ER-32D8
ER-32D9
ER-32D10
ER-32D11
ER-32D12
ER-32D13
ER-32D14
ER-32D15
ER-32D16
ER-32D17
ER-32D18
ER-32D19
ER-32D20

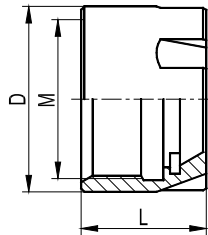
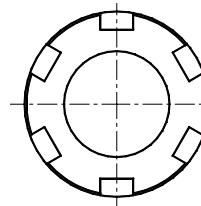
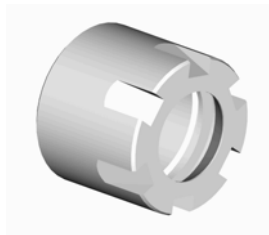
Rendelési kód Bestell-Nummer Order Number
ER-40D3
ER-40D4
ER-40D5
ER-40D6
ER-40D7
ER-40D8
ER-40D9
ER-40D10
ER-40D11
ER-40D12
ER-40D13
ER-40D14
ER-40D15
ER-40D16
ER-40D17
ER-40D18
ER-40D19
ER-40D20
ER-40D21
ER-40D22
ER-40D23
ER-40D24
ER-40D25
ER-40D26
ER-40D27
ER-40D28
ER-40D29
ER-40D30

Patronanya DIN 6499
Spannmutter DIN 6499
Clamping nuts DIN 6499



ER	D	L	M	SW	Tömeg Gewicht Weight	Rendelési kód Bestell-Nummer Order Number
16	32	17	M22x1,5	27	0,06	AS1-1601
25	42	20	M32x1,5	37	0,1	AS1-2501
32	50	22,5	M40x1,5	45	0,15	AS1-3201
40	63	25,5	M50x1,5	58	0,3	AS1-4001

Mini Patronanya DIN 6499
Spannmutter DIN 6499
Clamping nuts DIN 6499



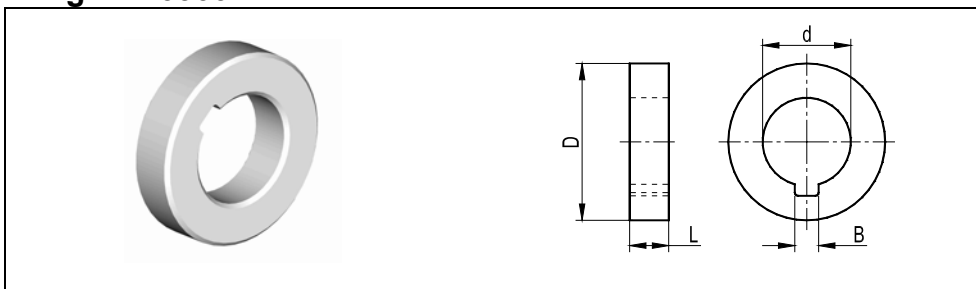
ER	D	L	M	Tömeg Gewicht Weight	Rendelési kód Bestell-Nummer Order Number
8	12	10,8	M10x0,75	0,005	AS1-0804
11	16	12	M13x0,75	0,007	AS1-1104
16	22	18	M19x1	0,02	AS1-1604
20	28	19	M24x1	0,03	AS1-2004

Forgató közgyűrű DIN 6366
Mitnehmerring DIN 6366
Driving ring DIN 6366



d	D	L1	L2	B	Tömeg Gewicht Weight	Rendelési kód Bestell-Nummer Order Number
16	32	10	5	8	0,06	RS2-16
22	40	12	5,6	10	0,1	RS2-22
27	48	12	6,3	12	0,15	RS2-27
32	58	14	7	14	0,25	RS2-32
40	70	14	8	16	0,35	RS2-40
50	90	16	9	18	0,65	RS2-50

Közgyűrű DIN 6366
Ring DIN 6366
Ring DIN 6366

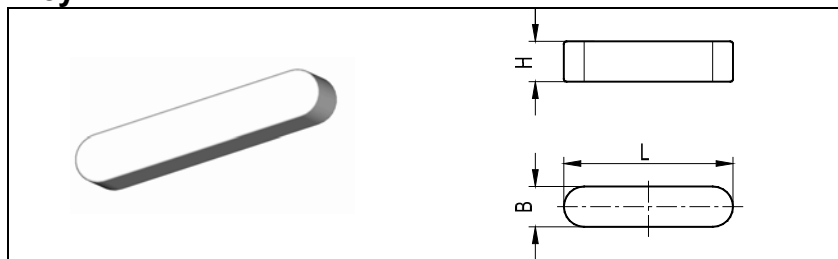


d	D	L	B	Tömeg Gewicht Weight	Rendelési kód Bestell-Nummer Order Number
16	32	10	4,2	0,05	RS1-16
22	40	12	6,3	0,08	RS1-22
27	48	12	7,3	0,12	RS1-27
32	58	14	8,3	0,2	RS1-32
40	70	14	10,3	0,3	RS1-40
50	90	16	12,3	0,55	RS1-50

Fészkés retesz kombinált marótüskéhez

Pasfeder

Key

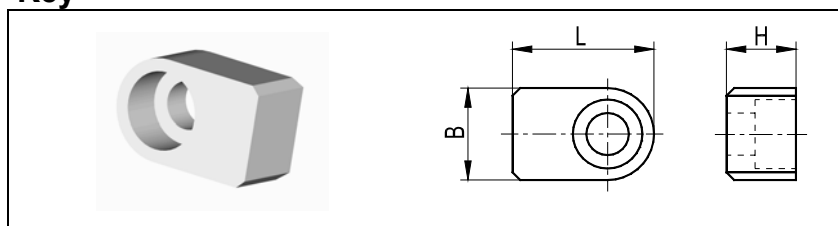


H	B	L	Tömeg Gewicht Weight	Rendelési kód Bestell-Nummer Order Number
4	4	20	0,002	RS3-040420
6	6	25	0,007	RS3-060625
7	7	25	0,009	RS3-070725
7	8	28	0,011	RS3-070828
8	10	32	0,019	RS3-081032
8	12	36	0,025	RS3-081236

Retesz marótüskéhez

Pasfeder

Key

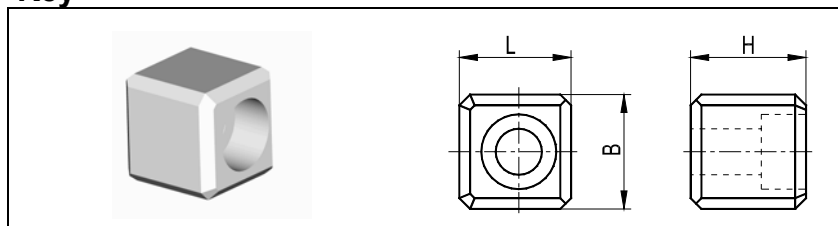


B	H	L	Tömeg Gewicht Weight	Rendelési kód Bestell-Nummer Order Number
10	8	15,6	0,007	RS4-100816
12	9	18,3	0,011	RS4-120918
14	11	21	0,017	RS4-141121

Retesz marófej felfogóhoz

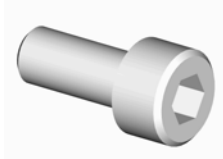
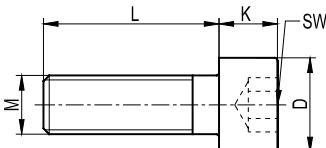
Pasfeder

Key

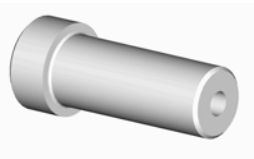
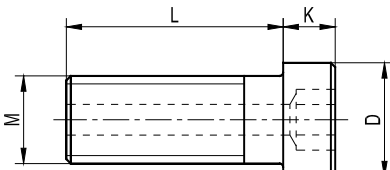


B	H	L	Tömeg Gewicht Weight	Rendelési kód Bestell-Nummer Order Number
15,9	15,5	16	0,023	RS5-161616
25,4	29	25	0,086	RS5-252925


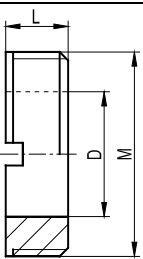
Csavar DIN 912
Schraube DIN912
Screw DIN 912

					
M	L	D	K	SW	Rendelési kód Bestell-Nummer Order Number
M4	8	7	4	3	CS1-04008
M5	10	8,5	5	4	CS1-05010
M6	12	10	6	5	CS1-06012
M6	16	10	6	5	CS1-06016
M12	20	18	12	10	CS1-12020
M16	25	24	16	14	CS1-16025

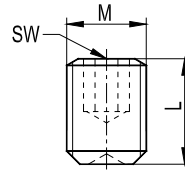
Behúzócsavar morse átalakítóhoz
Schraube
Screw

						
Morse kúp Morse Kegel Morse taper	M	L	K	D	Tömeg Gewicht Weight	Rendelési kód Bestell-Nummer Order Number
1	M6	20	4	10	0,006	CA6-06020-02
2	M10	25	6	13	0,02	CA6-10025-01
3	M12	30	7	18	0,04	CA6-12030-01
4	M16	35	9	22	0,07	CA6-16035-01
5	M20	45	11	30	0,15	CA6-20045-01

Támasztó persely morse átalakítóhoz
Büchse
Ring

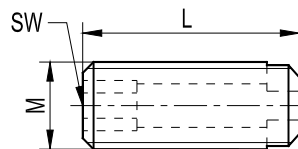
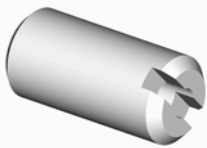
					
Morse kúp Morse Kegel Morse taper	M	L	D	Tömeg Gewicht Weight	Rendelési kód Bestell-Nummer Order Number
1/SK30	M10x1 bal	6	6,5	0,002	AE2-100601
1	M12x1 bal	6	6,5	0,004	AE2-120601
2	M15x1,5 bal	6	10,5	0,004	AE2-150601
3	M20x1,5 bal	6	12	0,004	AE2-200601
4	M24x1,5 bal	8,5	17	0,015	AE2-240801
5	M36x2 bal	11	22	0,052	AE2-361101

Szorítócsavar DIN 1835
Spannschraube DIN 1835
Locking screw DIN 1835



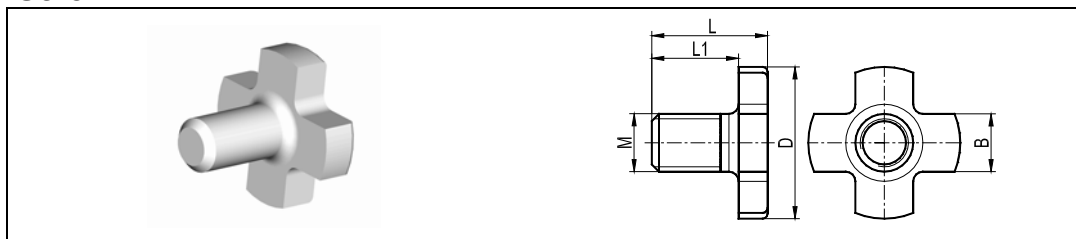
Furat átmérő Hole diameter	M	L	SW	Tömeg Gewicht Weight	Rendelési kód Bestell-Nummer Order Number
6	M6	10	3	0,002	CSW-06010
8	M8	10	4	0,003	CSW-08010
10	M10	12	5	0,06	CSW-10012
12,14	M12	16	6	0,01	CSW-12016
16,18	M14	16	6	0,016	CSW-14016
20	M16	16	8	0,019	CSW-16016
25	M18x2	20	10	0,03	CSW-18020
32	M20x2	20	10	0,04	CSW-20020
40	M20x2	25	10	0,05	CSW-20025

Állítócsavar
Anschlagschraube
Stopscrew



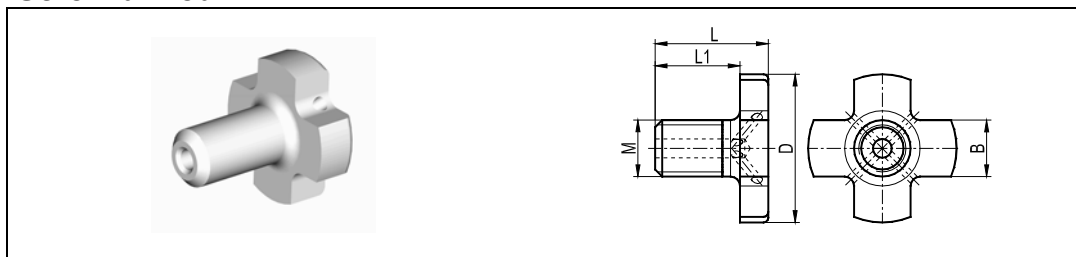
ER	M	L	SW	Tömeg Gewicht Weight	Rendelési kód Bestell-Nummer Order Number
16	M6	20	3	0,005	CA2-06020-01
25-32	M12	25	6	0,02	CA2-12025-01
40	M14	14	6	0,025	CA2-14025-01

Marórögztő csavar
Schraube
Screw



M	D	L	L1	B	Tömeg Gewicht Weight	Rendelési kód Bestell-Nummer Order Number
M8	20	22	16	8	0,02	CSM-16
M10	28	25	18	10	0,04	CSM-22
M12	35	30	22	12	0,06	CSM-27
M16	42	35	26	16	0,12	CSM32
M20	52	40	30	20	0,2	CSM-40
M24	63	48	36	24	0,35	CSM-50

Marórögztő csavar átfúrt
Schraube Gebohrt
Screw drilled

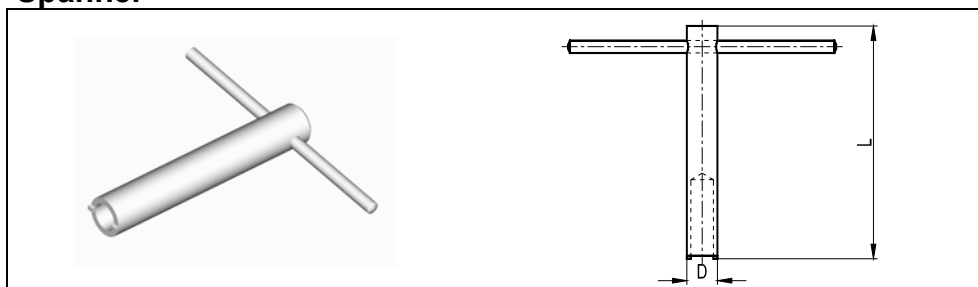


M	D	L	L1	B	Tömeg Gewicht Weight	Rendelési kód Bestell-Nummer Order Number
M8	20	22	16	8	0,02	CAM-1601
M10	28	25	18	10	0,04	CAM-2201
M12	35	30	22	12	0,06	CAM-2701
M16	42	35	26	16	0,12	CAM-3201
M20	52	40	30	20	0,2	CAM-4001
M24	63	48	36	24	0,35	CAM-5001

Kulcs behúzómenetes morse átalakítóhoz

Schlüssel

Spanner

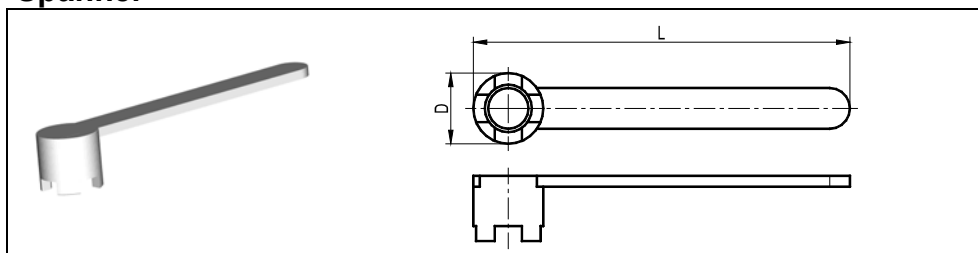


Morse kúp Morse Kegel Morse taper	D	L	Tömeg Gewicht Weight	Rendelési kód Bestell-Nummer Order Number
1	9,9	86	0,07	DE1-01
2	14,8	112	0,15	DE1-02
3	19,2	117	0,25	DE1-03
4	23	142	0,4	DE1-04
5	37	175	1,1	DE1-05

Kulcs marótüskéhez

Schlüssel

Spanner

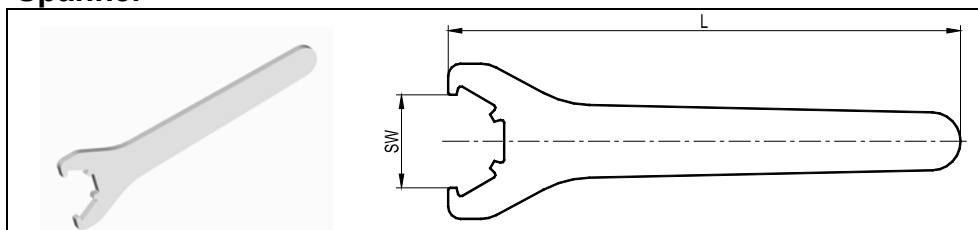


d	D	L	Tömeg Gewicht Weight	Rendelési kód Bestell-Nummer Order Number
16	22	180	0,1	DS3-16
22	28	200	0,25	DS3-22
27	35	225	0,5	DS3-27
32	42	250	0,6	DS3-32
40	52	280	1	DS3-40
50	63	315	1,4	DS3-50

Kulcs normál patronanyához

Spannschlüssel

Spanner



ER	SW	L	Tömeg Gewicht Weight	Rendelési kód Bestell-Nummer Order Number
16	27	170	0,18	DE2-16
25	37	210	0,26	DE2-25
32	45	250	0,4	DE2-32
40	58	290	0,6	DE2-40