

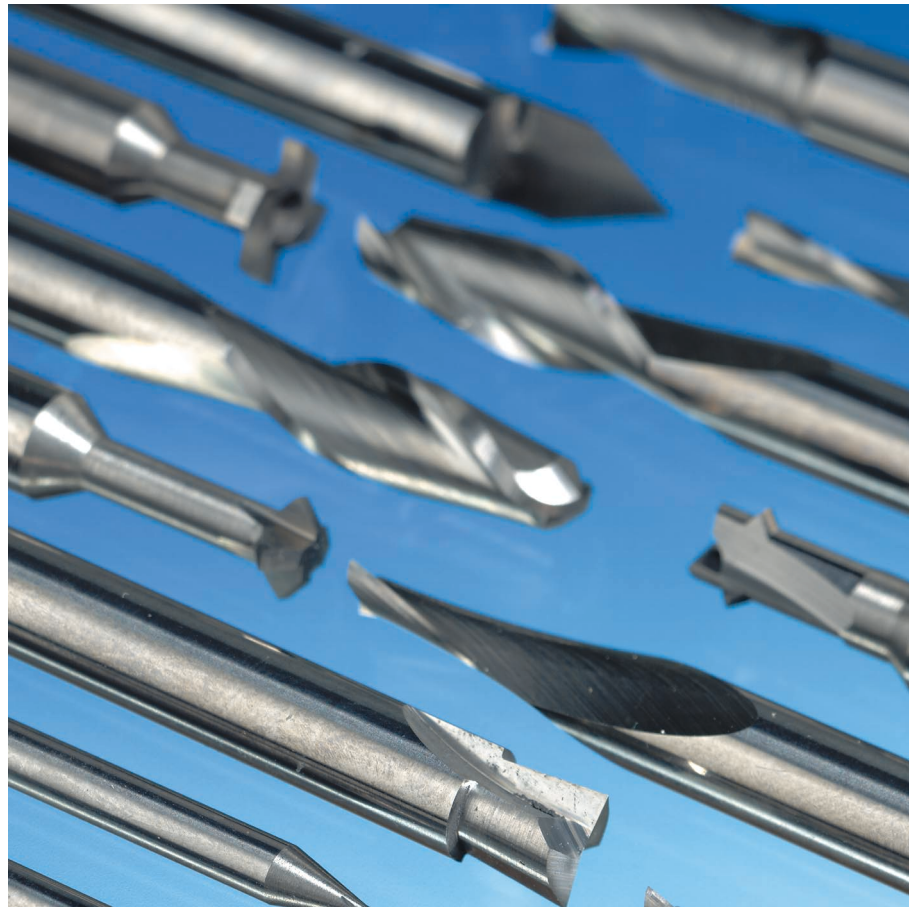
CNC Machining Systems

Mini Tools - 2003 UK Price List

Dispensing Systems

Positioning Drive Units

Consultation and Training



High-Speed Mini Tools

High-Speed CNC Bits

for Fast Feed Rates and Optimum Edge Finish

Item Group	Page:
W01: Single Flute End Mills, 1/8", 3-, 6-, 8 mm	2
W01C: TiALN coated Single Fluted End Mills 6 m	4
W02: Double Flute End Mills, 3 mm, 1/8"	5
W03: Double Flute End Mills, 6 mm, 8 mm	7
W04: High Speed, Double Flute End Mills, HSC+	8
W04b: Triple Flute End Mills	9
W05: Fish Tail End Mills for PCB Milling	10
W06: Drills 1/8"	11
W07: Drills < 3 mm	14
W08: Drills > 3 mm	16
W09: Thread Mills	18
W10: Milling Thread Mills	19
W11: Ball Nose End Mills	20
W12: External Radius Mills	21
W13: T-Nut Mills	22
W14: Slotting Mills for Clamping Bar	23
W15: Engraving Tools	24
W16: Engraving Tools, Spearform	26
W17: Engraving Tools, Diamond	27
W18: Special Tools	28
W19: Collet Chucks for High Speed Spindle	29
W20: Accessories for HS-Spindle	31
W-A1: Limit Stop Rings	32
W-A2: Adapter Collets	33
W-A3: Accessories	34
Terms of Payment and Delivery	
Fax Order-Form	

Minimum Order: £35 net of VAT & Carriage

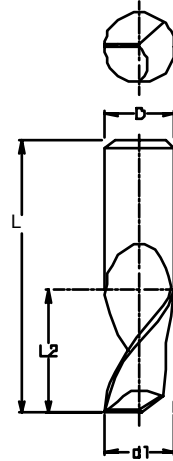
ORDERS SHOULD BE WRITTEN OR FAXED FAX: 01908 260108

Please contact us to discuss any speciallist applications Tel 01908 261655
 Datron Technology Limited - 5 & 6 Potters Lane, Kiln Farm - Milton Keynes - MK11 3HE

Micrograin Solid Carbide End Mill. Flat Bottom, Straight, Single Edge, Upcut Spiral.
General Use: Aluminum, Brass, Plastics, Copper.

W01: Single Flute End Mills

Designed for fast feed rates and optimum edge finish. These single fluted tools offer maximum chip removal capacity.
Shank Dia.: 3 mm, 1/8" (3.175 mm), 6 mm, 8 mm
Overall Length: 38 mm, 50 mm (6 mm shank)



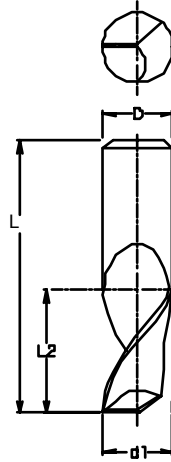
Item No	Item Description	d1 (mm)	D (mm)	L2 (mm)	Price (£)	DG
0068003E	SC-Router (single flute) 0.3 - 3	0.3	3.0	1.0	8.23	
0068004E	SC-Router (single flute) 0.4 - 3	0.4	3.0	1.0	8.23	
0068005E	SC-Router (single flute) 0.5 - 3	0.5	3.0	1.5	8.53	
0068006E	SC-Router (single flute) 0.6 - 3	0.6	3.0	2.5	8.53	
0068008E	SC-Router (single flute) 0.8 - 3	0.8	3.0	4.0	8.53	
0068010E	SC-Router (single flute) 1.0 - 3	1.0	3.0	4.0	8.53	
0068015E	SC-Router (single flute) 1.5 - 3	1.5	3.0	5.0	8.53	
0068020E	SC-Router (single flute) 2.0 - 3	2.0	3.0	8.0	8.53	
0068020G	SC-Router (single flute) 2.0 - 3	2.0	3.0	6.0	8.53	
0068024E	SC-Router (single flute) 2.4 - 3	2.4	3.0	8.0	8.53	
0068030E	SC-Router (single flute) 3.0 - 3	3.0	3.0	10.0	8.53	
0068079E	SC-Router (single flute) 7.0 - 8	7.0	8.0	14.0	17.53	
0068080E	SC-Router (single flute) 8.0 - 8	8.0	8.0	14.0	17.53	
0068430A	SC-Router (single flute) 3.0 - 6	3.0	6.0	5.0	15.34	
0068430E	SC-Router (single flute) 3.0 - 6	3.0	6.0	8.0	15.34	
0068430L	SC-Router (single flute) 3.0 - 6	3.0	6.0	12.0	15.34	
0068430S	SC-Router (single flute) 3.0 - 6	3.0	6.0	10.0	15.34	
0068432A	SC-Router (single flute) 2.0 - 6	2.0	6.0	5.0	15.34	
0068432E	SC-Router (single flute) 2.0 - 6	2.0	6.0	7.0	15.34	
0068434A	SC-Router (single flute) 4.0 - 6	4.0	6.0	5.0	15.34	
0068434E	SC-Router (single flute) 4.0 - 6	4.0	6.0	10.0	15.34	
0068434S	SC-Router (single flute) 4.0 - 6	4.0	6.0	14.0	15.34	
0068435E	SC-Router (single flute) 5.0 - 6	5.0	6.0	12.0	15.34	
0068460E	SC-Router (single flute) 6.0 - 6	6.0	6.0	14.0	15.34	

0068460L	SC-Router (single flute)	6.0 - 6	6.0	6.0	20.0	15.34
00686*E	1/8" Shank					
0068606E	SC-Router (single flute)	0.6 - 1/8"	0.6	3.175	2.5	5.12
0068608E	SC-Router (single flute)	0.8 - 1/8"	0.8	3.175	3.0	5.12
0068610E	SC-Router (single flute)	1.0 - 1/8"	1.0	3.175	3.0	5.12
0068612E	SC-Router (single flute)	1.2 - 1/8"	1.2	3.175	4.0	5.12
0068615E	SC-Router (single flute)	1.5 - 1/8"	1.5	3.175	4.0	5.12
0068620E	SC-Router (single flute)	2.0 - 1/8"	2.0	3.175	8.0	7.96
0068620F	SC-Router (single flute)	2.0 - 1/8"	2.0	3.175	11.5	7.96
0068620G	SC-Router (single flute)	2.0 - 1/8"	2.0	3.175	5.0	7.96
0068624E	SC-Router (single flute)	2.4 - 1/8"	2.4	3.175	8.0	7.96
0068630E	SC-Router (single flute)	3.0 - 1/8"	3.0	3.175	9.0	7.96
0068630F	SC-Router (single flute)	3.0 - 1/8"	3.0	3.175	11.5	7.96

TiALN coated Micrograin Solid Carbide End Mill.
Flat Bottom, Straight, Single Edge, Upcut Spiral.

**W01C:Coated Micrograin
Carbide 6 mm**

The TiALN coating results in longer tool lifetime. The special tool design offers maximum chip removal capacity.
Shank Dia.: 6 mm
Overall Length: 50 mm

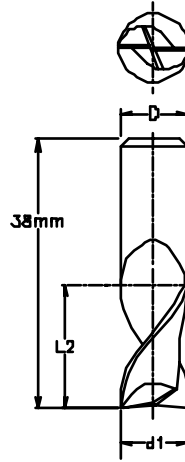


Item No	Item Description		d1 (mm)	D (mm)	L2 (mm)	Price £	DG
0068930E	SC-Router TiALN Coated 3.0 - 6		3.0	6.0	8.0	17.35	
0068930L	SC-Router TiALN Coated 3.0 - 6		3.0	6.0	12.0	17.35	
0068932E	SC-Router TiALN Coated 2.0 - 6		2.0	6.0	7.0	17.35	
0068934E	SC-Router TiALN Coated 4.0 - 6		4.0	6.0	10.0	17.35	
0068935E	SC-Router TiALN Coated 5.0 - 6		5.0	6.0	10.0	17.35	
0068960E	SC-Router TiALN Coated 6.0 - 6		6.0	6.0	14.0	17.35	
0068960L	SC-Router TiALN Coated 6.0 - 6		6.0	6.0	20.0	17.35	

Micrograin Solid Carbide End Mills. Double Fluted, Flat Bottom, Straight, Upcut Spiral.
General Use: Aluminum, Brass, Duro-Plastics, Copper.

W02: Double Flute End Mills

Special Versions:
K: extra short cutting edge; less chattering
L: Long cutting edge



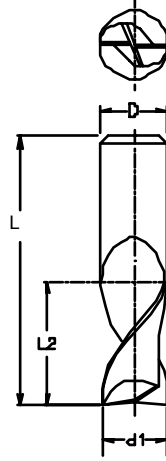
Item No	Item Description	d1 (mm)	D (mm)	L2 (mm)	Price (£)	DG
0068003	SC-Router (2-flute) 0.3 - 3	0.3	3.0	0.9	19.00	
0068004	SC-Router (2-flute) 0.4 - 3	0.4	3.0	2.5	10.65	
0068005	SC-Router (2-flute) 0.5 - 3	0.5	3.0	2.5	10.85	
0068006	SC-Router (2-flute) 0.6 - 3	0.6	3.0	3.0	8.23	
0068006K	SC-Router (2-flute) 0.6 - 3	0.6	3.0	1.0	12.24	
0068008	SC-Router (2-flute) 0.8 - 3	0.8	3.0	4.0	8.23	
0068009	SC-Router (2-flute) 0.9 - 3	0.9	3.0	5.0	8.23	
0068010	SC-Router (2-flute) 1.0 - 3	1.0	3.0	5.0	8.23	
0068010K	SC-Router (2-flute) 1.0 - 3	1.0	3.0	3.0	8.23	
0068012	SC-Router (2-flute) 1.2 - 3	1.2	3.0	5.0	8.23	
0068015	SC-Router (2-flute) 1.5 - 3	1.5	3.0	5.0	8.23	
0068020	SC-Router (2-flute) 2.0 - 3	2.0	3.0	9.0	8.23	
0068020K	SC-Router (2-flute) 2.0 - 3	2.0	3.0	4.0	8.23	
0068024	SC-Router (2-flute) 2.4 - 3	2.4	3.0	8.0	8.23	
0068024K	SC-Router (2-flute) 2.4 - 3	2.4	3.0	5.0	8.23	
0068030A	SC-Router (2-flute) 3.0 - 3	3.0	3.0	10.0	10.44	
0068030K	SC-Router (2-flute) 3.0 - 3	3.0	3.0	6.0	8.23	
0068030L	SC-Router (2-flute) 3.0 - 3	3.0	3.0	12.0	10.44	
0068030X	SC-Router (2-flute) 3.0 - 3	3.0	3.0	25.0	13.34	
00686*	1/8" Shank					
0068606	SC-Router (2-flute) 0.6 - 1/8"	0.6	3.175	3.0	5.12	
0068608	SC-Router (2-flute) 0.8 - 1/8"	0.8	3.175	5.0	5.12	
0068609	SC-Router (2-flute) 0.9 - 1/8"	0.9	3.175	5.0	5.12	

0068610	SC-Router (2-flute)	1.0 - 1/8"	1.0	3.175	4.0	4.10
0068610K	SC-Router (2-flute)	1.0 - 1/8"	1.0	3.175	3.0	7.00
0068612	SC-Router (2-flute)	1.2 - 1/8"	1.2	3.175	5.0	4.10
0068615	SC-Router (2-flute)	1.5 - 1/8"	1.5	3.175	6.0	4.10
0068620	SC-Router (2-flute)	2.0 - 1/8"	2.0	3.175	8.0	4.10
0068620K	SC-Router (2-flute)	2.0 - 1/8"	2.0	3.175	4.0	7.00
0068624	SC-Router (2-flute)	2.4 - 1/8"	2.4	3.175	8.0	4.10
0068624K	SC-Router (2-flute)	2.5 - 1/8"	2.4	3.175	5.0	7.00
0068630	SC-Router (2-flute)	3.0 - 1/8"	3.0	3.175	10.0	4.10
0068630K	SC-Router (2-flute)	3.0 - 1/8"	3.0	3.175	6.0	7.00

Micrograin Solid Carbide Router. Double Fluted, Flat Bottom, Straight, Upcut Spiral. General Use: Aluminum, Brass, Duro-Plastics, Copper.

W03: Double Flute End Mills

These double fluted tools are also available in special lengths and with TiALN coatings.



Item No	Item Description	d1 (mm)	D (mm)	L2 (mm)	Price (£)	DG
0068080	SC-Router (2-flute) 8.0 - 8 toric cut to 21.0mm	8.0	8.0	9.0	25.33	
0068080K	SC-Router (2-flute) 8.0 - 8 with corner radius of r=1,0 mm	8.0	8.0	12.0	25.33	
0068081	SC-Router (2-flute) 8.0 - 8	8.0	8.0	16.0	17.53	
0068082	SC-Router (2-flute) 8.0 - 8	8.0	8.0	35.0	33.42	
0068430	SC-Router (2-flute) 3.0 - 6	3.0	6.0	7.0	15.41	
0068430G	SC-Router (2-flute) 3.0 - 6	3.0	6.0	11.0	15.41	
0068434	SC-Router (2-flute) 4.0 - 6	4.0	6.0	8.0	15.41	
0068435	SC-Router (2-flute) 5.0 - 6	5.0	6.0	10.0	15.41	
0068442	SC-Router (2-flute) 12.0 - 6 with corner radius of r=1,0 mm	12.0	6.0	6.0	38.00	
0068443	SC-Router (2-flute) 14.0 - 8 with corner radius of r=1,0 mm	14.0	8.0	6.0	50.81	
0068460	SC-Router (2-flute) 6.0 - 6	6.0	6.0	18.0	15.41	
0068460G	SC-Router (2-flute) 6.0 - 6	6.0	6.0	20.0	15.41	
0068460K	SC-Router (2-flute) 6.0 - 6	6.0	6.0	10.0	15.41	
0068460S	SC-Router (2-flute) 6.0 - 6 with corner radius of r=0,3 mm	6.0	6.0	6.0	19.56	
0068460X	SC-Router (2-flute) 6.0 - 6	6.0	6.0	30.0	24.63	

Extra High-Speed Micrograin Solid Carbide Router. 2-Fluted, Flat, Straight, Small Angle Upcut Spiral.

High-Speed Machining of: Aluminum, Plastics, Laminates.

W04: High Speed, Double Fluted End Mills

The specially designed tool geometry for an extraordinarily high machining speed with fast CNC machines (such as Datron CAT3D).

Application example for 3mm-tools (068863K):

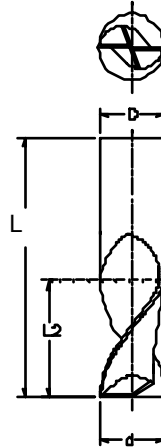
Contour milling in 2.5 mm aluminium plate

- 50000 RPM.

- Cutting feed XY: 5.0 m/min.

Shank Dia.: 3 mm, 1/8" (3.175 mm), 6 mm, 8 mm

Overall Length: 38 mm, 50 mm (6 mm shank)



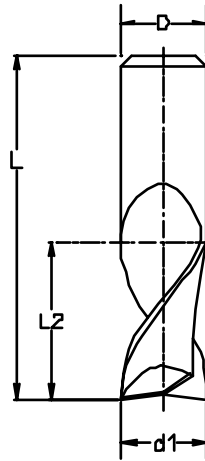
Item No	Item Description	d1 (mm)	D (mm)	L2 (mm)	Price (£)	DG
0068815	SC-Router (2-flute) HSC+ 1.5 - 1/8"	1.5	3.175	6.0	10.44	
0068815A	SC-Router (2-flute) HSC+ 1.5 - 3.0	1.5	3.0	6.0	10.44	
0068820	SC-Router (2-flute) HSC+ 2.0 - 1/8"	2.0	3.175	6.0	10.44	
0068820A	SC-Router (2-flute) HSC+ 2.0 - 3.0	2.0	3.0	6.0	10.44	
0068824	SC-Router (2-flute) HSC+ 2.4 - 1/8"	2.4	3.175	8.0	10.44	
0068830	SC-Router (2-flute) HSC+ 3.0 - 1/8"	3.0	3.175	10.0	10.44	
0068830A	SC-Router (2-flute) HSC+ 3.0 - 3.0	3.0	3.0	10.0	10.44	
0068830K	SC-Router (2-flute) HSC+ 3.0 - 1/8"	3.0	3.175	6.0	10.44	
0068860	SC-Router (2-flute) HSC+ 6.0 - 6	6.0	6.0	12.0	15.41	
0068860K	SC-Router (2-flute) HSC+ 6.0 - 6	6.0	6.0	7.0	15.41	
0068862	SC-Router (2-flute) HSC+ 2.0 - 6	2.0	6.0	6.0	15.41	
0068862K	SC-Router (2-flute) HSC+ 2.0 - 6	2.0	6.0	4.0	15.41	
0068863	SC-Router (2-flute) HSC+ 3.0 - 6	3.0	6.0	10.0	15.41	
0068863K	SC-Router (2-flute) HSC+ 3.0 - 6	3.0	6.0	6.0	15.41	
0068864	SC-Router (2-flute) HSC+ 4.0 - 6	4.0	6.0	8.0	15.41	
0068865	SC-Router (2-flute) HSC+ 5.0 - 6	5.0	6.0	10.0	15.41	

Micrograin solid carbide router. Triple cutting edge, 30° upcut spiral, manufactured from ultra-fine-grained base material with X-TREME coating.

Shank: 6 mm, length: 50 mm

W04b: Triple cutting edge router

The triple cutting edge routers are specially designed for machining stainless steel, graphite, and cast iron. Service life is unusually long, thanks to the short cutting edge and the special coating.



Item No	Item Description	d_1 (mm)	D (mm)	L_2 (mm)	Price (£)	DG
0068552	SC-Router (3-flute) 2.0 - 6	2.0	6.0	6.0	16.00	
0068553	SC-Router (3-flute) 3.0 - 6	3.0	6.0	6.0	16.00	
0068554	SC-Router (3-flute) 4.0 - 6	4.0	6.0	8.0	16.00	
0068555	SC-Router (3-flute) 5.0 - 6	5.0	6.0	10.0	16.00	
0068556	SC-Router (3-flute) 6.0 - 6	6.0	6.0	10.0	16.00	

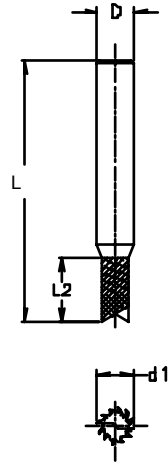
Micrograin Solid Carbide PCB End Mills for Printed-Circuit Material (e.g. FR4). Micro-Toothed, Fishtail-Grinded Bottom, Straight, Upcut Spiral.

W05: Fish Tail End Mills For PCB Milling

The chip flow is directed upward so these tools are recommend for use with the CAT3D chip extraction modules.

Shank Dia: 3 mm, 1/8"
Total length: 38 mm

Shank Dia: 6 mm
Total length: 50 mm

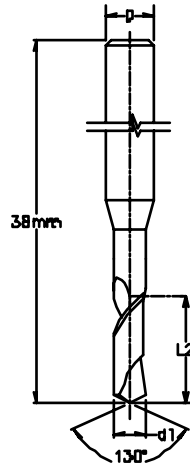


Item No	Item Description	d1 (mm)	D (mm)	L2 (mm)	Price (£)	DG
0068106	SC-PCB-Router 0.6 - 3	0.6	3.0	3.0	7.53	
0068108	SC-PCB-Router 0.8 - 3	0.8	3.0	5.0	7.53	
0068110	SC-PCB-Router 1.0 - 3	1.0	3.0	5.0	7.53	
0068112	SC-PCB-Router 1.2 - 3	1.2	3.0	5.0	7.53	
0068115	SC-PCB-Router 1.5 - 3	1.5	3.0	8.0	7.53	
0068120	SC-PCB-Router 2.0 - 3	2.0	3.0	8.0	7.53	
0068124	SC-PCB-Router 2.4 - 3	2.4	3.0	8.0	7.53	
0068130	SC-PCB-Router 3.0 - 3	3.0	3.0	10.0	7.53	
0068166S	SC-PCB-Router 6.0 - 6	6.0	6.0	12.0	26.74	
006865*	1/8" shank					
00686506	SC-PCB-Router 0.6 - 1/8"	0.6	3.175	3.0	6.30	
00686508	SC-PCB-Router 0.8 - 1/8"	0.8	3.175	5.0	6.30	
00686510	SC-PCB-Router 1.0 - 1/8"	1.0	3.175	5.0	6.30	
00686512	SC-PCB-Router 1.2 - 1/8"	1.2	3.175	5.0	6.30	
00686515	SC-PCB-Router 1.5 - 1/8"	1.5	3.175	8.0	6.30	
00686520	SC-PCB-Router 2.0 - 1/8"	2.0	3.175	8.0	6.30	
00686524	SC-PCB-Router 2.4 - 1/8"	2.4	3.175	8.0	6.30	
00686530	SC-PCB-Router 3.0 - 1/8"	3.0	3.175	10.0	5.00	

Micrograin Solid Carbide Drills with 1/8" Shank Diameter. For General Use: Aluminum, Brass, Copper, Plastics etc.

W06: Micrograin Carbide Drills 1/8"

Shank Dia: 1/8"
 Total length: 38 mm
 Point angle: 130° to d1 = 3,1 mm.
 Point angle: 165° at d1 = 3,1 mm.
 The tapering from the shank to the drilling diameter a very good optimum edge can be achieved.



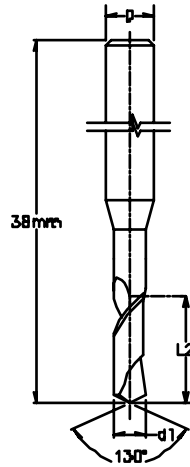
Item No	Item Description	d1 (mm)	D (mm)	L2 (mm)	Price (£)	DG
00687*	1/8" shank					
0068704	SC-SP-DRILL 0.4 - 1/8"	0.4	3.175	6.0	2.27	
0068705	SC-SP-DRILL 0.5 - 1/8"	0.5	3.175	6.0	2.27	
0068706	SC-SP-DRILL 0.6 - 1/8"	0.6	3.175	6.5	2.27	
0068707	SC-SP-DRILL 0.7 - 1/8"	0.7	3.175	10.5	2.27	
0068708	SC-SP-DRILL 0.8 - 1/8"	0.8	3.175	10.5	2.27	
0068709	SC-SP-DRILL 0.9 - 1/8"	0.9	3.175	10.5	2.27	
0068710	SC-SP-DRILL 1.0 - 1/8"	1.0	3.175	10.5	2.27	
0068711	SC-SP-DRILL 1.1 - 1/8"	1.1	3.175	10.5	2.27	
0068712	SC-SP-DRILL 1.2 - 1/8"	1.2	3.175	10.5	2.27	
0068713	SC-SP-DRILL 1.3 - 1/8"	1.3	3.175	10.5	2.27	
0068714	SC-SP-DRILL 1.4 - 1/8"	1.4	3.175	10.5	2.27	
0068715	SC-SP-DRILL 1.5 - 1/8"	1.5	3.175	10.5	2.27	
0068716	SC-SP-DRILL 1.6 - 1/8"	1.6	3.175	10.5	2.27	
0068717	SC-SP-DRILL 1.7 - 1/8"	1.7	3.175	10.5	2.27	
0068718	SC-SP-DRILL 1.8 - 1/8"	1.8	3.175	10.5	2.27	
0068719	SC-SP-DRILL 1.9 - 1/8"	1.9	3.175	10.5	2.27	
0068720	SC-SP-DRILL 2.0 - 1/8"	2.0	3.175	10.5	2.27	
0068721	SC-SP-DRILL 2.1 - 1/8"	2.1	3.175	10.5	2.27	
0068722	SC-SP-DRILL 2.2 - 1/8"	2.2	3.175	10.5	2.27	
0068723	SC-SP-DRILL 2.3 - 1/8"	2.3	3.175	10.5	2.27	
0068724	SC-SP-DRILL 2.4 - 1/8"	2.4	3.175	10.5	2.27	
0068725	SC-SP-DRILL 2.5 - 1/8"	2.5	3.175	10.5	2.27	
0068726	SC-SP-DRILL 2.6 - 1/8"	2.6	3.175	10.5	2.27	

0068727	SC-SP-DRILL	2.7 - 1/8"	2.7	3.175	10.5	2.27
0068728	SC-SP-DRILL	2.8 - 1/8"	2.8	3.175	10.5	2.27
0068729	SC-SP-DRILL	2.9 - 1/8"	2.9	3.175	10.5	2.27
0068730	SC-SP-DRILL	3.0 - 1/8"	3.0	3.175	10.5	2.27
0068731	SC-SP-DRILL	3.1 - 1/8"	3.1	3.175	10.5	2.27
0068732	SC-SP-DRILL	3.2 - 1/8"	3.2	3.175	12.0	4.89
0068733	SC-SP-DRILL	3.3 - 1/8"	3.3	3.175	12.0	4.89
0068734	SC-SP-DRILL	3.4 - 1/8"	3.4	3.175	12.0	4.89
0068735	SC-SP-DRILL	3.5 - 1/8"	3.5	3.175	12.0	4.89
0068736	SC-SP-DRILL	3.6 - 1/8"	3.6	3.175	12.0	5.59
0068737	SC-SP-DRILL	3.7 - 1/8"	3.7	3.175	12.0	5.59
0068738	SC-SP-DRILL	3.8 - 1/8"	3.8	3.175	12.0	5.59
0068739	SC-SP-DRILL	3.9 - 1/8"	3.9	3.175	12.0	5.59
0068740	SC-SP-DRILL	4.0 - 1/8"	4.0	3.175	12.0	5.59
0068741	SC-SP-DRILL	4.1 - 1/8"	4.1	3.175	12.0	5.91
0068742	SC-SP-DRILL	4.2 - 1/8"	4.2	3.175	12.0	5.91
0068743	SC-SP-DRILL	4.3 - 1/8"	4.3	3.175	12.0	5.91
0068744	SC-SP-DRILL	4.4 - 1/8"	4.4	3.175	12.0	5.91
0068745	SC-SP-DRILL	4.5 - 1/8"	4.5	3.175	12.0	5.91
0068746	SC-SP-DRILL	4.6 - 1/8"	4.6	3.175	12.0	6.23
0068747	SC-SP-DRILL	4.7 - 1/8"	4.7	3.175	12.0	6.23
0068748	SC-SP-DRILL	4.8 - 1/8"	4.8	3.175	12.0	6.23
0068749	SC-SP-DRILL	4.9 - 1/8"	4.9	3.175	12.0	6.23
0068750	SC-SP-DRILL	5.0 - 1/8"	5.0	3.175	12.0	6.20
0068751	SC-SP-DRILL	5.1 - 1/8"	5.1	3.175	12.0	6.58
0068752	SC-SP-DRILL	5.2 - 1/8"	5.2	3.175	12.0	6.58
0068753	SC-SP-DRILL	5.3 - 1/8"	5.3	3.175	12.0	6.58
0068754	SC-SP-DRILL	5.4 - 1/8"	5.4	3.175	12.0	6.58
0068755	SC-SP-DRILL	5.5 - 1/8"	5.5	3.175	12.0	6.58
0068756	SC-SP-DRILL	5.6 - 1/8"	5.6	3.175	12.0	7.39
0068757	SC-SP-DRILL	5.7 - 1/8"	5.7	3.175	12.0	7.39
0068758	SC-SP-DRILL	5.8 - 1/8"	5.8	3.175	12.0	7.39
0068759	SC-SP-DRILL	5.9 - 1/8"	5.9	3.175	12.0	7.39
0068760	SC-SP-DRILL	6.0 - 1/8"	6.0	3.175	12.0	7.39
0068761	SC-SP-DRILL	6.1 - 1/8"	6.1	3.175	12.0	8.72
0068762	SC-SP-DRILL	6.2 - 1/8"	6.2	3.175	12.0	8.72
0068763	SC-SP-DRILL	6.3 - 1/8"	6.3	3.175	12.0	8.72
0068764	SC-SP-DRILL	6.4 - 1/8"	6.4	3.175	12.0	8.72
0068765	SC-SP-DRILL	6.5 - 1/8"	6.5	3.175	12.0	8.72

Micrograin Solid Carbide Drills with 3 mm Shank Diameter. For general use: Aluminum, Brass, Copper, Plastics etc.

W07: Micrograin Carbide Drills < 3 mm

Shank Dia: 1/8"
 Total length: 38 mm
 Tool-Tip Angle: 130°



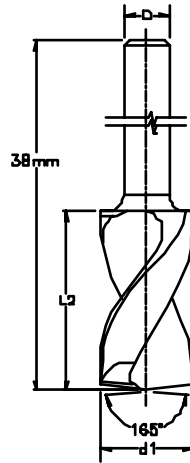
Item No	Item Description	d1 (mm)	D (mm)	L2 (mm)	Price (£)	DG
0068204	SC-SP-DRILL 0.4 - 3	0.4	3.0	6.5	3.00	
0068205	SC-SP-DRILL 0.5 - 3	0.5	3.0	6.0	3.00	
0068206	SC-SP-DRILL 0.6 - 3	0.6	3.0	6.5	3.00	
0068207	SC-SP-DRILL 0.7 - 3	0.7	3.0	10.5	3.00	
0068208	SC-SP-DRILL 0.8 - 3	0.8	3.0	10.5	3.00	
0068209	SC-SP-DRILL 0.9 - 3	0.9	3.0	10.5	3.00	
0068210	SC-SP-DRILL 1.0 - 3	1.0	3.0	10.5	3.00	
0068211	SC-SP-DRILL 1.1 - 3	1.1	3.0	10.5	3.00	
0068212	SC-SP-DRILL 1.2 - 3	1.2	3.0	10.5	3.00	
0068213	SC-SP-DRILL 1.3 - 3	1.3	3.0	10.5	3.00	
0068214	SC-SP-DRILL 1.4 - 3	1.4	3.0	10.5	3.00	
0068215	SC-SP-DRILL 1.5 - 3	1.5	3.0	10.5	3.00	
0068216	SC-SP-DRILL 1.6 - 3	1.6	3.0	10.5	3.00	
0068217	SC-SP-DRILL 1.7 - 3	1.7	3.0	10.5	3.00	
0068218	SC-SP-DRILL 1.8 - 3	1.8	3.0	10.5	3.00	
0068219	SC-SP-DRILL 1.9 - 3	1.9	3.0	10.5	3.00	
0068220	SC-SP-DRILL 2.0 - 3	2.0	3.0	10.5	3.00	
0068221	SC-SP-DRILL 2.1 - 3	2.1	3.0	10.5	3.00	
0068222	SC-SP-DRILL 2.2 - 3	2.2	3.0	10.5	3.00	
0068223	SC-SP-DRILL 2.3 - 3	2.3	3.0	10.5	3.00	
0068224	SC-SP-DRILL 2.4 - 3	2.4	3.0	10.5	3.00	
0068225	SC-SP-DRILL 2.5 - 3	2.5	3.0	10.5	3.00	
0068226	SC-SP-DRILL 2.6 - 3	2.6	3.0	10.5	3.00	
0068227	SC-SP-DRILL 2.7 - 3	2.7	3.0	10.5	3.00	

0068228	SC-SP-DRILL	2.8 - 3	2.8	3.0	10.5	3.00
0068229	SC-SP-DRILL	2.9 - 3	2.9	3.0	10.5	3.00
0068230	SC-SP-DRILL	3.0 - 3	3.0	3.0	10.5	3.00

Micrograin Solid Carbide Drills with 3 mm Shank Diameter. For General Use: Aluminum, Brass, Copper, Plastics.

W08: Micrograin Carbide Drills > 3 mm

Shank Dia: 3 mm
Overall length: 38 mm
Tool-Tip Angle: 165°



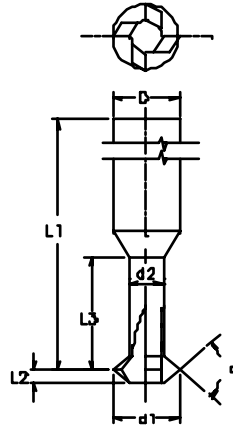
Item No	Item Description	d1 (mm)	D (mm)	L2 (mm)	Price (£)	DG
0068231	SC-SP-DRILL 3.1 - 3	3.1	3.0	10.5	6.65	
0068232	SC-SP-DRILL 3.2 - 3	3.2	3.0	13.0	6.65	
0068233	SC-SP-DRILL 3.3 - 3	3.3	3.0	13.0	6.65	
0068234	SC-SP-DRILL 3.4 - 3	3.4	3.0	13.0	6.65	
0068235	SC-SP-DRILL 3.5 - 3	3.5	3.0	13.0	6.65	
0068236	SC-SP-DRILL 3.6 - 3	3.6	3.0	13.0	8.06	
0068237	SC-SP-DRILL 3.7 - 3	3.7	3.0	13.0	8.06	
0068238	SC-SP-DRILL 3.8 - 3	3.8	3.0	13.0	8.06	
0068239	SC-SP-DRILL 3.9 - 3	3.9	3.0	13.0	8.06	
0068240	SC-SP-DRILL 4.0 - 3	4.0	3.0	13.0	8.06	
0068241	SC-SP-DRILL 4.1 - 3	4.1	3.0	13.0	8.06	
0068242	SC-SP-DRILL 4.2 - 3	4.2	3.0	13.0	8.06	
0068243	SC-SP-DRILL 4.3 - 3	4.3	3.0	13.0	8.06	
0068244	SC-SP-DRILL 4.4 - 3	4.4	3.0	13.0	8.06	
0068245	SC-SP-DRILL 4.5 - 3	4.5	3.0	13.0	8.06	
0068246	SC-SP-DRILL 4.6 - 3	4.6	3.0	13.0	9.42	
0068247	SC-SP-DRILL 4.7 - 3	4.7	3.0	13.0	9.42	
0068248	SC-SP-DRILL 4.8 - 3	4.8	3.0	13.0	9.42	
0068249	SC-SP-DRILL 4.9 - 3	4.9	3.0	13.0	9.42	
0068250	SC-SP-DRILL 5.0 - 3	5.0	3.0	13.0	9.42	
0068251	SC-SP-DRILL 5.1 - 3	5.1	3.0	13.0	10.16	
0068252	SC-SP-DRILL 5.2 - 3	5.2	3.0	13.0	10.16	
0068253	SC-SP-DRILL 5.3 - 3	5.3	3.0	13.0	10.16	
0068254	SC-SP-DRILL 5.4 - 3	5.4	3.0	13.0	10.16	

0068255	SC-SP-DRILL	5.5 - 3	5.5	3.0	13.0	10.16
0068256	SC-SP-DRILL	5.6 - 3	5.6	3.0	13.0	11.21
0068257	SC-SP-DRILL	5.7 - 3	5.7	3.0	13.0	11.21
0068258	SC-SP-DRILL	5.8 - 3	5.8	3.0	13.0	11.21
0068259	SC-SP-DRILL	5.9 - 3	5.9	3.0	13.0	11.21
0068260	SC-SP-DRILL	6.0 - 3	6.0	3.0	13.0	11.21
0068261	SC-SP-DRILL	6.1 - 3	6.1	3.0	13.0	11.93
0068262	SC-SP-DRILL	6.2 - 3	6.2	3.0	13.0	11.93
0068263	SC-SP-DRILL	6.3 - 3	6.3	3.0	13.0	11.93
0068264	SC-SP-DRILL	6.4 - 3	6.4	3.0	13.0	11.93
0068265	SC-SP-DRILL	6.5 - 3	6.5	3.0	13.0	11.93

Micrograin Carbide Thread Mills. For the Milling of Threads with High-Speed Spindles.

W09: Thread Mills

Milling threads can be an effective method in comparison to the conventional method of thread, thus for PG-threads from PG7 up to PG48 only one tool is needed. Additionally the workpiece can be machined in one go and does not have to be clamped off for thread milling.



Item No	Item Description	D	L1	L3	d1	d2	a	Price	DG
		mm	mm	mm	mm	mm	Grad	(£)	
0068418	SC-thread-router, M1.0-M1.2 D=3mm Only applicable in the Datron machine programm " complex movement thread BOTH"	3	40	3	.80	.49	60	51.00	
0068419	SC-thread-router, M1.6-M2.5 D=3mm	3	40	6	1.4	0.9	60	30.07	
0068420	SC-thread-router, M2.5-M4 D=3mm	3	40	8	2.0	1.0	60	30.07	
0068450	SC-thread-router, Whitw.up to 1/2"	6	50	12	6.0	3.0	55	34.12	
0068450A	SC-thread-router, Whitw. > 1/2" D=6mm	6	50	12	8.0	3.0	55	49.95	
0068451	SC-thread-router, M5-M10 D=6mm	6	50	12	4.0	2.0	60	34.68	
0068451A	SC-thread-router, M10-M16 D=6mm	6	50	12	8.0	3.0	60	49.95	
0068452	SC-thread-router, PG7-PG48 D=6mm	6	50	12	6.0	3.0	80	34.12	
0068455	Macro program disk for thread milling Included in Software Version 6.00A. There the standard thread command supports all parameters.								

Parameter of Thread Mills in Tooldatabase

Item	Dia	Istdm	Rpm	K	D2	L2	W/R
068418	0.80	0.80	35.000	40	0.49	0.09	60
068419	1.4	1.4	35.000	40	0.9	0.1	60
068420	2.0	2.0	35.000	40	1.0	0.2	60
068450	6.0	6.0	25.000	40	1.9	0.7	55
068450A	8.0	8.0	25.000	40	3.0	1.55	55
068451	4.0	4.08	25.000	40	1.97	0.5	60
068451A	8.0	8.0	25.000	40	3.0	1.6	60
068452	6.0	5.95	25.000	40	2.98	1.3	80

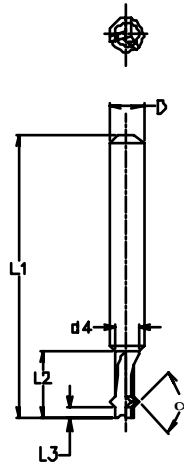
Micrograin Carbide Thread Mills. For the Milling of Threads with High-Speed Spindles.

W10: Milling Thread Mills

Milling the center hole and milling threads can be done with this tool in one time saving operation.

Shank Dia: 3 mm; Overall Length : 40 mm

Shank Dia: 6 mm; Overall Length : 50mm

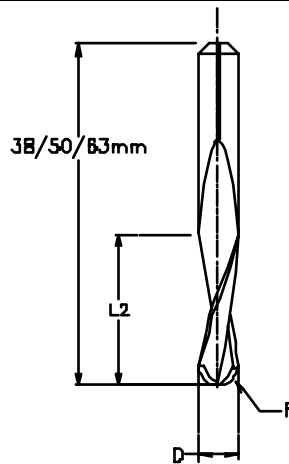


Item No	Item Description	D	L1	L2	L3	a	Price	DG
		mm	mm	mm	mm	Grad	(£)	
0068419A	SC-thread-router, M2.5 - 3.0	3	40	8	1.0	60	41.47	
0068420A	SC-thread-router, M4.0 - 5.0	3	40	10	1.0	60	41.47	
0068454	SC-thread-router, PG7 - PG48	6	50	12	2.0	80	33.76	
0068454A	SC-thread-router, metr. Kabelv.	6	50	12	2.0	60	42.14	
0068456	SC-thread-router, M6	6	50	12	1.0	60	45.67	
0068457	SC-thread-router, M8-M10	6	50	12	1.5	60	45.67	
0068458	SC-thread-router, M12-M16	6	50	12	1.5	60	49.18	

Micrograin Carbide Ball Nose End Mills.
For 3D and Modelmaking Applications.

W11: Ball Nose End Mills

Shank Dia.: 3 mm; Overall Length: 38 mm
Shank Dia.: 6 mm; Overall Length: 50 mm
Shank Dia.: 8 mm; Overall Length: 63 mm

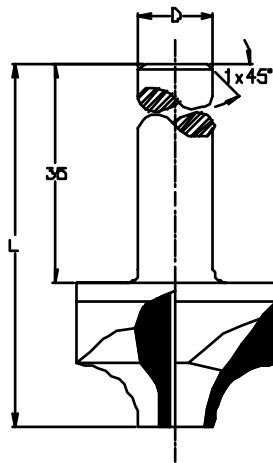


Item No	Item Description	D	R	d	L1	L2	Price	DG
		(mm)	(mm)	(mm)	(mm)	(mm)	(£)	
0068400	SC-ball nose router R 0.5 - 3	3.0	0.5	1.0	38	3.0	13.79	
00684004	SC-ball nose router R 0.2 - 3	3.0	0.2	0.4	38	1.2	23.55	
00684006	SC-ball nose router R 0.3 - 3	3.0	0.3	0.6	38	1.8	20.69	
00684008	SC-ball nose router R 0.4 - 3	3.0	0.4	0.8	38	2.4	20.69	
0068401	SC-ball nose router R 1.5 - 3	3.0	1.5	3.0	38	10.0	13.79	
00684015	SC-ball nose router R 0.75 - 3	3.0	0.75	1.5	38	3.0	13.50	
0068402	SC-ball nose router R 1.0 - 3	3.0	1.0	2.0	38	4.0	13.79	
00684025	SC-ball nose router R 1.25 - 3	3.0	1.25	2.5	38	5.0	13.97	
0068403	SC-ball nose router R 1.5 - 6	6.0	1.5	3.0	50	4.0	17.01	
0068404	SC-ball nose router R 2.0 - 6	6.0	2.0	4.0	50	5.0	17.01	
0068405	SC-ball nose router R 2.5 - 6	6.0	2.5	5.0	50	5.0	17.01	
0068406	SC-ball nose router R 3.0 - 6	6.0	3.0	6.0	50	5.0	17.01	
0068408	SC-ball nose router R 4.0 - 8	8.0	4.0	8.0	50	6.0	21.67	

Micrograin Carbide External Radius End Mills.

W12: External Radius End Mills

Shank Dia.: 6 mm; Overall Length: 50 mm

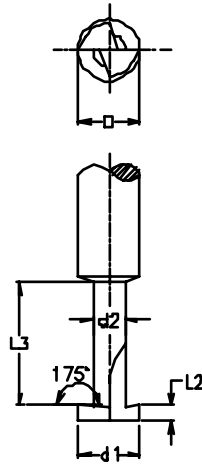


Item No	Item Description	R (mm)	D (mm)	L (mm)	Price (£)	DG
0068411	SC-External radius router 1.0 - 6	1.0	6.0	50	20.93	
0068412	SC-External radius router 2.0 - 6	2.0	6.0	50	20.93	
00684125	SC-External radius router 2.5 - 6	2.5	6.0	50	33.07	
0068413	SC-External radius router 3.0 - 6	3.0	6.0	50	42.39	
00684135	SC-External radius router 3.5 - 6	3.5	6.0	50	49.77	
0068414	SC-External radius router 4.0 - 6	4.0	6.0	50	53.28	
00684145	SC-External radius router 4.5 - 6	4.5	6.0	50	53.28	

Special Mill for T-Slots.
Micrograin Carbide Quality.

W13: T-Slot Mills

Groove Dimensions : 3 mm x 0.8 mm
 Shank Dia.: 3 mm; Overall Length: 38 mm
 Shank Dia.: 6 mm; Overall Length: 50 mm
 Shank Dia.: 8 mm; Overall Length: 50 mm

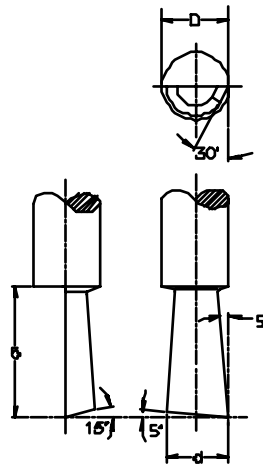


Item No	Item Description	D	d1	d2	L2	L3	Price (£)	DG
0068423	SC-T-groove router Shank: D=6mm	6.0	10.0	4.0	2.0	10.0	47.84	
0068424	SC-T-groove router Shank: D=6mm	6.0	8.0	3.5	1.3	6.0	47.84	
0068424A	SC-T-groove router Shank: D=8mm	8.0	8.0	3.5	1.3	6.0	51.35	
0068424K	SC-T-groove router Shank: D=6mm	6.0	8.0	3.5	1.0	6.0	55.61	
0068424L	SC-T-groove router Shank: D=6mm	6.0	8.0	3.5	0.7	6.0	55.61	
0068424S	SC-T-groove router Shank: D=6mm	6.0	8.0	3.5	4.5	6.0	51.35	
0068425	SC-T-groove router Shank: D=3mm	3.0	3.0	1.6	0.8	6.0	24.79	

Special Slotting Mill for the Milling of Clamping Fixture Slots.

W14: Slotting mill, clamping bar

Shank Dia.: 3 mm, 1/8"; Overall Length: 38 mm
 Shank Dia.: 6 mm; Overall Length: 50 mm



Item No	Item Description	D mm	d (mm)	Price (£)	DG
0068290	Slotting router 3 for SSCF-grooves	3	3	16.81	
0068291	Slotting router 6 for SSCF-grooves	6	6	23.35	
0068690	Slotting router 1/8" for SSCF-grooves	3.175	3.175	16.81	

Engraving Tools for Aluminum and Plastics. Conical Tool-Tip.

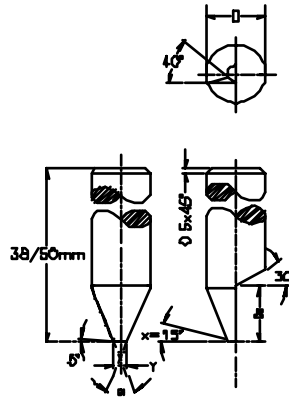
W15: Standard Engraving Tools

The engraving tools are supplied taper shaped. The cutting width (Y), the angle of the cutting edge (5 deg.), and the angle X have to be grinded by the user.

Hints for the selection of engraving tools :

- narrow cone angle : smooth cutting ways, shorter edge life
- wide cone angle : wider cutting ways, longer edge life.

The standard point angle " y" is 0,1 mm.



Item No	Item Description	D (mm)	a (Grad)	Y (mm)	Price (£)	DG
0068279	Engraving tool, conical 20 - 3	3.0	20	0,1	9.86	
0068279A	Engraving tool, conical 30 - 3	3.0	30	0,1	9.86	
0068279B	Engraving tool, conical 30 - 3	3.0	30	0,2	10.05	
0068280	Engraving tool, conical 40 - 3	3.0	40	0,1	9.86	
0068280A	Engraving tool, conical 45 - 3	3.0	45	0,1	9.86	
0068280B	Engraving tool, conical 40 - 3	3.0	40	0,2	9.86	
0068281	Engraving tool, conical 60 - 3	3.0	60	0,1	9.86	
0068281A	Engraving tool, conical 60 - 3	3.0	60	0,2	10.05	
0068282	Engraving tool, conical 90 - 3	3.0	90	0,1	9.86	
0068283	Engraving tool, conical 30 - 6	6.0	30	0,1	18.65	
0068283D	Engraving tool, conical 30 - 6	6.0	30	0,2	18.76	
0068283E	Engraving tool, conical 30 - 6	6.0	30	0,3	18.76	
0068283F	Engraving tool, conical 30 - 6	6.0	30	0,4	18.76	
0068283G	Engraving tool, conical 30 - 6	6.0	30	0,6	18.76	
0068284	Raw engraver, cut in half, 3mm shank	3.0	180		7.00	
0068285	Engraving tool, conical 50 - 6	6.0	50	0,1	18.65	
0068285A	Engraving tool, conical 60 - 6	6.0	60	0,1	18.65	
0068285D	Engraving tool, conical 60 - 6	6.0	60	0,2	18.65	
0068285E	Engraving tool, conical 60 - 6	6.0	60	0,3	18.65	
0068285F	Engraving tool, conical 60 - 6	6.0	60	0,4	18.65	
0068285S	Engraving tool, conical 60 - 6 Cut specially for the machining of steel.	6.0	60	0,2	18.65	
0068286	Engraving tool, conical 90 - 6	6.0	90	0,1	18.65	
0068288	Raw engraver, cut in half, 6mm shank	6.0	180		8.79	
0068293	Regrind-service f. 3mm-tools	Mindestmenge: 20Stck.			2.11	

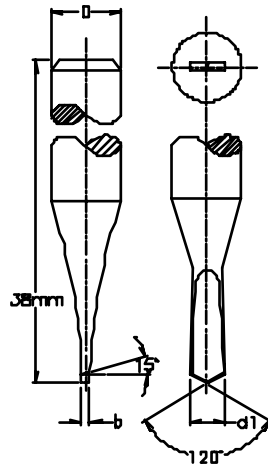
0068296	Regrind-service f. 6mm-tools		Mindestmenge: 20Stck.	3.78
0068298	Diamond lapping tool			52.93
	Used for manual resharping of the cutting-edges of sold-carbide (SC) mills and graving-tools. Super fine bronze-metal bond D35.			
0068679	Engravure tool, conical	20 - 1/8"	3.175 20	9.86
0068679A	Engravure tool, conical	30 - 1/8"	3.175 30	9.86
0068680	Engravure tool, conical	40 - 1/8"	3.175 40	9.86
0068681	Engravure tool, conical	60 - 1/8"	3.175 60	9.86
0068682	Engravure tool, conical	90 - 1/8"	3.175 90	9.86

Spearform Engraving Tools.
Long life.

W16: Speerform Engraving
Tools

When using this kind of tool, the surface of the workpiece should always be measured using the Z-Correction before machining. This is recommend because the tip angle (90 deg.) is very wide and this will cause a varying cutting width when the engraving depth is not constant.

Shank diameter: 3 mm, 1/8"
Overall Length: 38 mm



Item No	Item Description	d1 (mm)	D (mm)	b (mm)	Price (£)	DG
0068271	Engraving tool, Spear shaped	1.0	3.0	0.15	6.89	
0068272	Engraving tool, Spear shaped	1.2	3.0	0.25	6.89	
0068275	Engraving tool, Spear shaped	1.5	3.0	0.30	6.89	
006867*	1/8" shank					
0068671	Engraving tool, Spear shaped	1.0	3.175	0.15	6.89	
0068672	Engraving tool, Spear shaped	1.2	3.175	0.25	6.89	
0068675	Engraving tool, Spear shaped	1.5	3.175	0.30	6.89	

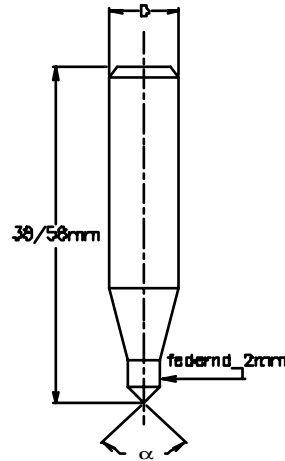
Sprung notch-diamond for Bijouterie Engravings.
Suitable for Metal Work Pieces e.g. Gold, Silver,
Brass, Tin, Aluminum.

**W17: Diamond Bijouterie
Tools**

For engravings onto bent surfaces
a point angle of 90 deg. should be
chosen.

Shank Dia.: 3 mm; Overall Length:
38 mm

Shank Dia.: 6 mm; Overall Length:
50 mm



Item No	Item Description	a (Grad.)	Price (£)	DG
0068501	Notch diamond, spring mounted	90	55.82	
0068502	Notch diamond, spring mounted	120	55.82	
0068504	PKD-Engraving tool 3 - 40°	40	94.98	
0068504S	PKD-Engraver, Regrind-service		47.49	

Simplify the Machining Process and Reduce Machining Time with Special Grinded Tools.

W18: Special Tools

Ask our specialists about optimized tool solutions for your applications.



Item No	Item Description	d1 (mm)	D (mm)	L2 (mm)	Price (£)	DG
0068479	90 Deg. Countersunk tool (3-flute)	6.0	6.0	25.0	18.09	
0068480	90 Deg. Countersunk tool (3-flute)	8.0	6.0	25.0	32.37	
0068481	90 Deg. Countersunk tool (3-flute)	3.25	6.0	4.5	43.27	
0068482	90 Deg. Countersunk tool	3.2	6.0	5.0	33.42	
0068484	90 Deg. Countersunk tool	3.0	6.0	6.0	61.56	

Collet Chucks for High Speed and Engraving Spindles.

W19: Collet Chucks for HS-Spindle

The Standard Types are:

- 068320 for tools with mit 3 mm shank

- 068326 for tools with mit 6 mm shank

(not for HF-Spindle 290 W

068330 for tools with mit 1/8" mm shank

- 068331 for tools with mit 1/4" mm shank

The Collets with End-Letter "D" are used with the HF-Spindle 2kW (Item No.: A01053B).



Item No	Item Description	Price (£)	DG
0068300	Collet Chuck D1.0 mm/8/5	98.49	
0068301	Collet Chuck D 1.1mm/8/5	98.49	
0068302	Collet Chuck D1.2mm/8/5	98.49	
0068303	Collet Chuck D1.3mm/8/5	98.49	
0068304	Collet Chuck D1.4mm/8/5	98.49	
0068305	Collet Chuck D1.5mm/8/5	98.49	
0068306	Collet Chuck D1.6mm/8/5	98.49	
0068307	Collet Chuck D1.7mm/8/5	98.49	
0068308	Collet Chuck D1.8mm/8/5	98.49	
0068309	Collet Chuck D1.9mm/8/5	98.49	
0068310	Collet Chuck D 2.0mm/8/5	98.49	
0068311	Collet Chuck D 2.1mm/8/5	98.49	
0068312	Collet Chuck D 2.2mm/8/5	98.49	
0068313	Collet Chuck D 2.3mm/8/5	98.49	
0068314	Collet Chuck D 2.4mm/8/5	98.49	
0068315	Collet Chuck D 2.5mm/8/5	98.49	
0068316	Collet Chuck D 2.6mm/8/5	98.49	
0068317	Collet Chuck D 2.7mm/8/5	98.49	
0068318	Collet Chuck D 2.8mm/8/5	98.49	
0068319	Collet Chuck D 2.9mm/8/5	98.49	
0068320	Collet Chuck D 3.0mm/8/5	53.97	
0068320D	Collet chuck D 3,0mm/10/5 Only for 2kW HF-spindle	56.14	
0068324	Collet Chuck D 4.0mm/8/5	53.97	
0068324D	Collet Chuck D 4,0mm/10/5	56.14	

0068325	Collet Chuck D 5.0mm/8/5	53.97
0068326	Collet Chuck D 6.0mm/8/5	53.97
0068326D	Collet chuck D 6,0mm/10/5 Only for 2kW HF-spindle	75.04
0068328D	Collet chuck D 8,0mm/10/5 Only for 2kW HF-spindle	56.14
0068330	Collet Chuck D1/8" /8/5	53.97
0068330D	Collet chuck D 1/8" /10/5 Only for 2kW HF-spindle	56.14
0068331	Collet Chuck D1/4" /8/5	98.49
0068332	Collet Chuck D 3/16" /8/5	98.49
0068333	Collet Chuck D 5/32" /8/5	98.49

Service Set for Cleaning and Greasing of HS-Spindle Collets.

W20: Accessories HS-Spindle

It is important to clean and grease the collets at least once per week.



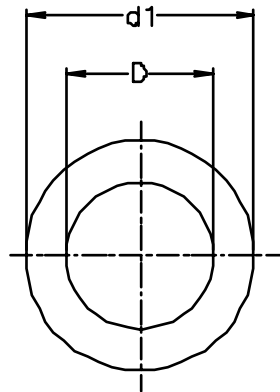
Item No	Item Description	Price	DG
0068338	Service-set for SF-spindle (für Spannzangen 8/5)	13.27	(£)
0068339	Grease for collet chucks, SF-spindle	5.36	Tube, 8 G

Limit Stop Rings for Automated Tool Change.

W-A1: Limit Stop Rings

Available for:

3 mm
6 mm
8 mm
1/8 "



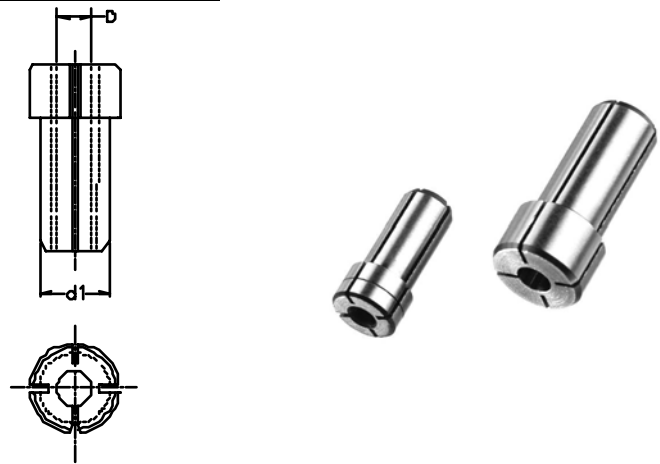
Item No	Item Description	D mm	d1 mm	Price (£)	DG
0068000B	Limit stop ring (D=3mm/7.55mm, plastic)	3	7.55	6.86	
0068000C	Limit stop ring (D=3mm/7.55mm, plastic)	3	7.55	20.65	
0068000Z	Limit stop ring (D=1/8"/7.55mm, plastic)	3.175	7.55	20.65	
0068001B	Limit stop ring (D=6mm/10.5mm, brass)	6	10.50	14.74	
0068001C	Limit stop ring (D=6mm/10.5mm, brass)	6	10.50	48.82	
0068001D	Limit stop ring (D=8mm/12.5mm, plastic)	8	12.50	1.48	
0068002	Limit stop ring (D=6mm/10.5mm, brass)	6	10.50	0.73	
0068002H	Limit stop ring (D=6mm/15mm re-useable)	6	15.00	3.46	
For tools with 6mm shank and flutes with diameter up to 12mm					
0068002J	Limit stop ring (brass)	6	18.00	3.46	
0068002Z	Limit stop ring (D=1/4"/10.5mm, brass)	6.35	10.50	2.00	
0068180	Limit stop ring adapter			46.23	

Recommendable for the pressing-in of brass limit stop rings with 6 mm core removing hole.

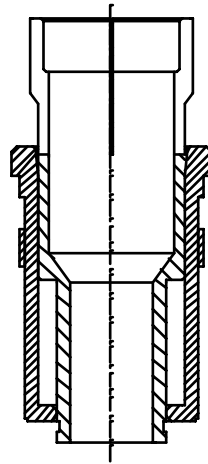
Adapter Collets for Operating with Different Shank Diameters in one Spindle Collet.

W-A2: Adapter Collets

The adapters are reusable. Use the insertion tools (Item No.: 0068337) to clamp them on the router bit.



Item No	Item Description	D mm	d1 mm	Price (£)	DG
0068336	Adaptor collet chuck 3 to 6 mm	3	6	27.79	
	When using tools with different shaft-diameters (such as 3mm and 6mm) it is normally required to change the collet chuck manually. This makes a continuous machining impossible.				
	Using the Adaptor Collet Chuck developed by DATRON it is no longer required to change the collet chuck of the spindle in most cases. Machining is done fundamental with a 6mm collet chuck inserted into the spindle. The shaft diameter of the tools have to be 3mm or 6mm. The tools with a shaft diameter of 3mm become equipped with adaptor collet chucks that can be fit using the insertion-tool Art.No. 0068337. This way, the 3mm tools can be used with the 6mm collet chuck of the spindle.				
	For this adapter the tool change station Art.Nr. 069220 is required.				
0068336A	Adaptor collet chuck 2 to 8 mm	2	8	34.12	
0068336B	Adaptor collet chuck 2 to 6 mm	2	6	34.12	
0068336C	Adaptor collet chuck 3 to 8 mm	3	8	34.12	
	For this adapter the tool change station Art.Nr. 069221 is required.				
0068336D	Adaptor collet chuck 4 to 8 mm	4	8	34.12	
0068336F	Adaptor collet chuck 6 to 8 mm	6	8	34.12	
	For this adapter the tool change station Art.Nr. 069221 is required.				
0068336G	Adaptor collet chuck 1 to 6 mm	1	6	34.12	
0068337	Adapter-Charging-Tool (for 6mm chuck)			45.37	
0068337A	Adapter-Charging-Tool (for 8mm chuck)			45.37	
0068350	Adaptor collet chuck 1/8" to 6 mm	1/8"	6	27.79	
	For this adapter the tool change station Art.Nr. 069220 is required.				
0068350A	Adaptor collet chuck 1/8" to 1/4"	1/8"	1/4"	27.79	
	For this adapter the tool change station Art.Nr. 069220 is required.				
0068350C	Adaptor collet chuck 1/8" to 8 mm	1/8"	8	34.12	
	For this adapter the tool change station Art.Nr. 069221 is required.				



Item No	Item Description	Price (£)	DG
0069220	Tool-change stations for 3mm, 1/8" tools	32.89	
0069220A	Brass inlet for toolchanger (3mm,1/8")	11.96	
0069221	Tool-change stations for 6mm, 1/4" tools	34.65	
0069221A	Brass inlet, toolchanger (6mm,1/4")	11.96	
0069222	Tool change station for mills up to 8mm	57.51	
0069222A	Brass inlet, toolchanger (8mm)	19.70	
0069223	Tool change station for mills up to 12mm	69.65	
0069223A	Brass inlet, toolchanger (12mm)	25.33	
0069227	Tool change station for mills up to 15mm	69.65	
0069227A	Brass clamp for tool change station	25.33	

Terms of payment and delivery

Prices are ex works, excluding VAT, packing and freight.

Minimum net value of order: £35.00

For orders up to £35.00 net we will make a surcharge to make the minimum order value.

Ordered goods will be despatched via Business Post for a STANDARD NEXT DAY DELIVERY.

Please specify if goods are required by 9.30am, 10am, before 12pm - surcharges apply

Tool orders will only be accepted against a WRITTEN or FAXED order.

Tools will be sent out same day provided the order is received before midday and the tools are in stock.

Goods are property of DATRON until the invoice has been paid in full.

Account customers have 30 day credit.

Account holder status will be revoked for late payment.

www.datrontechnology.co.uk

FAX TOOL ORDER

To DATRON TECHNOLOGY LTD

FAX: 01908 260108

TEL: 01908 261655

Your Details::

Company	Purchase Order:
Contact:	Tel:
E-MAIL:	
Invoice Address:	Delivery Address:

Order Details:

<i>Part No:</i>	<i>Description</i>	<i>Qty</i>	<i>Price</i>	<i>Total</i>
Please note that the net minimum tool order value is £35. Any orders that are below the minimum value will be subject to a surcharge. Carriage is charged at cost at time of delivery.			Subtotal	
			Tax	
			Total	

WE APPRECIATE YOUR BUSINESS

FAX TOOL ORDER

To DATRON TECHNOLOGY LTD

FAX: 01908 260108

TEL: 01908 261655

Your Details::

Company	Purchase Order:
Contact:	Tel:
E-MAIL:	
Invoice Address:	Delivery Address:

Order Details:

<i>Part No:</i>	<i>Description</i>	<i>Qty</i>	<i>Price</i>	<i>Total</i>
Please note that the net minimum tool order value is £35. Any orders that are below the minimum value will be subject to a surcharge. Carriage is charged at cost at time of delivery.			Subtotal	
			Tax	
			Total	

WE APPRECIATE YOUR BUSINESS