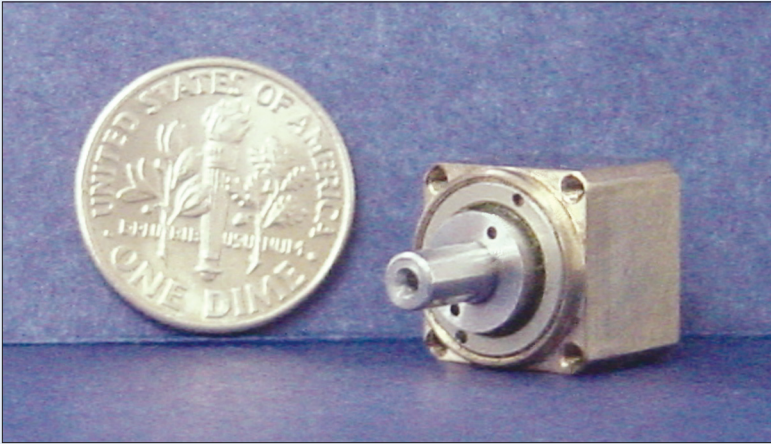


THE WORLD'S SMALLEST HARMONIC DRIVE GEARHEAD

HARMONIC DRIVE GEARHEAD CSF-3-2XH

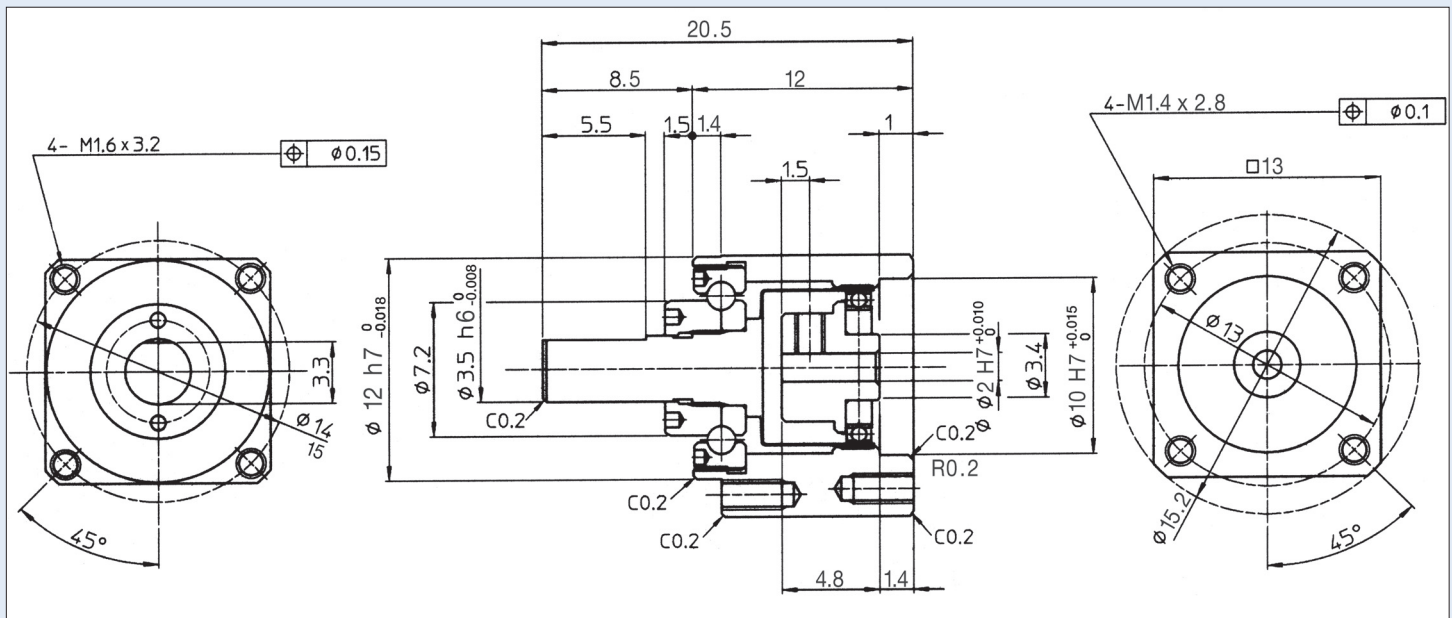
The World's smallest size Harmonic Drive Gearhead has been developed. The CSF-3 uses Harmonic Drive LLC's patented design and manufacturing expertise. Ultra Precision Gear-cutting Technology has created the World's smallest tooth Module:0.042mm.



FEATURES

- OUTSIDE DIMENSION: 12 MM
- ZERO-BACKLASH
- COMPACT 4-POINT CONTACT BALL BEARING MOUNTED ON MAIN SHAFT

GEAR RATIO	RATED TORQUE		REPEATED PEAK TORQUE		MAX. MOMENTARY TORQUE	
	N.m	In.lb	N.m	In.lb	N.m	In.lb
30	0.04	0.35	0.09	0.80	0.15	1.33
50	0.08	0.71	0.15	1.33	0.29	2.57
100	0.11	0.97	0.21	1.86	0.40	3.54



Harmonic Drive LLC

Boston
247 Lynnfield Street
Peabody, MA 01960

New York
89 Cabot Court
Hauppauge, NY 11788

800-921-3332 • F: 978-532-9406
www.HarmonicDrive.net