

A Full Line of HarmonicDrive® Products That

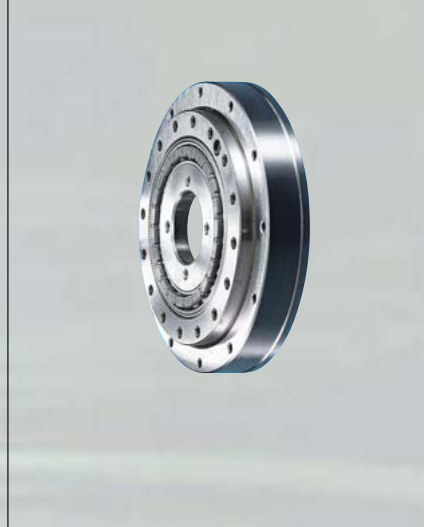
To ensure accurate angle transmission and pinpoint positioning, we offer a full range of electronic controllers for use with AC/DC servo actuators that deliver outstanding resolution and precise rotary motion, as well as linear actuators that provide similarly excellent resolution and accurate linear motion. For optimal performance, we recommend using these controllers with our HarmonicDrive® and AccuDrive® epicycle gears. Harmonic Drive Systems Inc. is committed to the further development of peripheral mechatronic and electronic products with the aim of achieving true total motion control.

HarmonicDrive®

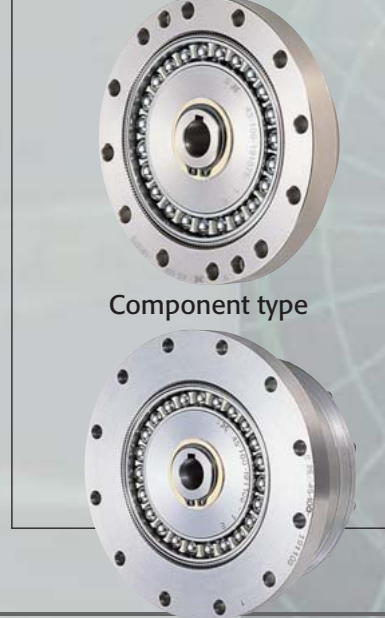
HarmonicDrive® CSD Series
(Component type only)



HarmonicDrive® SHD Series



HarmonicDrive® CSG-CSF Series



Component type

Unit type

MECHATRONICS

Fine Mechanics & Motion Control

AC servo actuator



FHA-C Series

FHA-C mini Series

RSF Supermini Series

HA Series

DC servo actuator



High-powered
RHS/RFS Series

Supermini RH Series

HS Series

Rotary Moti

Deliver Total Motion Control

**HarmonicDrive®
SHG-SHF Series**



Component type



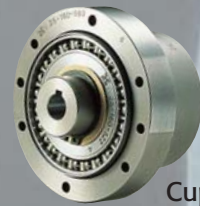
Unit type



**HarmonicDrive®
CSF-mini Series**



**HarmonicDrive® Stan
general-purpose spee**



Cup type



Flat type

Standard Series

Linear Motion

Linear Actuator



LNP Series



LA Series



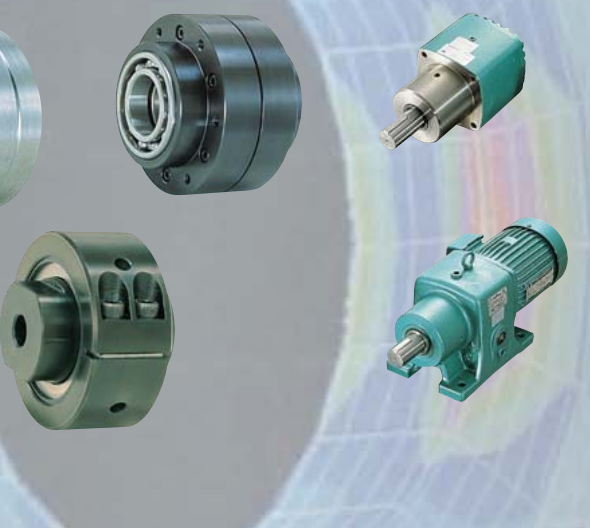
LAH Series



LBC Series

Discovering the Innovative
Technologies of Tomorrow

Standard Series/phase control units/
and reducers



AccuDrive[®]

Planetary gears
HPG Series



Step actuator



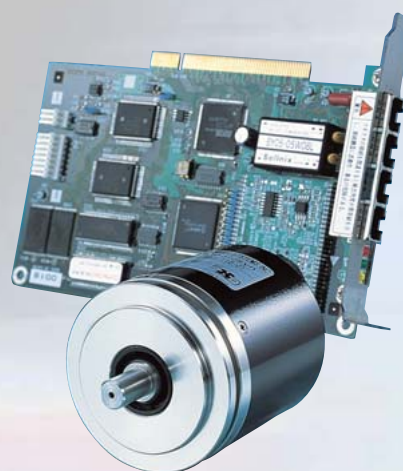
RP-B Series

Optical scanner



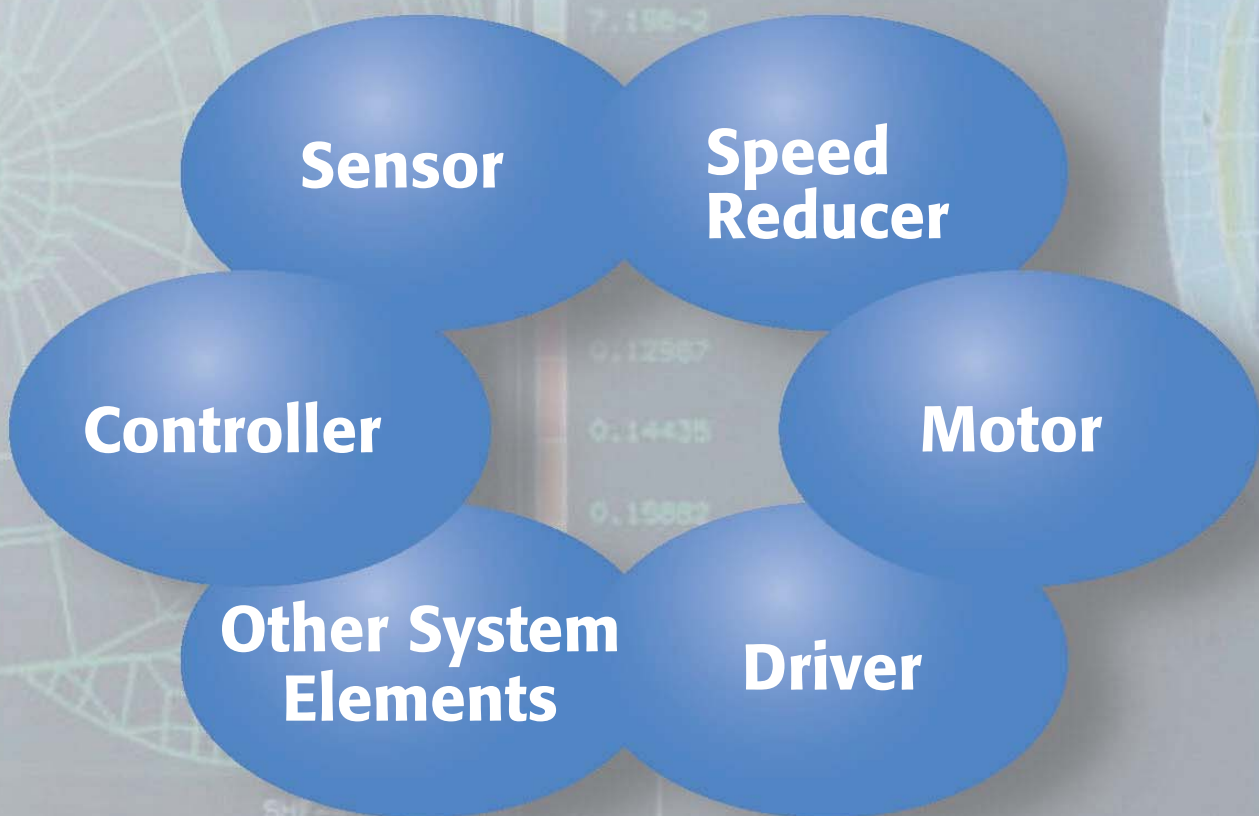
LSA Series

Harmonicsyn[®]



Absolute angle sensor system
MIT Series

Schematic Concept of Total Motion Control



```
txy**2.e2= 6*(txy**2.0 + tyz**2.0 + tzx**txy  
:**2.0 + tzx**2.0)  
se3 = sqrt(se1 + se2)  
se = 1.0 / sqrt( 2.0) * se3  
sige(j) = se I  
continue
```