

Spindle System Accessories





Frequency Converters

Type PCS 410



The **precise** Type PCS 410 frequency converter is a digital AC drive that provides variable speed control of **precise** high frequency spindles. Type PCS frequency converters are factory programmed for the exact voltage / frequency output, current limit, and accel/decel times for the spindle used.

Precise spindle system installation is easy using the built-in electrical receptacles for spindle power cable and interlock cable connection. Electrical compatibility with **precise** spindles and peripheral equipment is guaranteed!

Features:

- Proven reliable operation up to 3000 Hz.
- 2-phase and 3-phase output
- Easy-to-use rpm dial and start / stop pushbuttons.
- True spindle rpm and motor load display.
- Multi-pin connector for CNC/computer control.
- Electronic monitoring of spindle PTC and system interlocks.
- Electronic overload protection and input circuit breakers to protect against motor overload and short circuits.
- Integrated regenerative control

| SPECIFICATIONS | PCS 410 |
|--|---|
| Input power | 230 V (+ 10%, -10%), 1 phase, 50/60 Hz |
| Dimensions (W, H, D) (with cabinet) | 447.5 mm [17.6"], 141 mm [5.6"], 360 mm [14.2"] |
| Dimensions (W, H, D) (19" rack version) | 483 mm [19"], 132 mm [5.2"], 413 mm [16.3"] |
| Weight | 9.5 kg [21 lb] |
| Maximum Continuous Output | 220 V, 3000 Hz, 10 A, 3.8 kW |
| Spindle Series | SC 40, 60, 1060, 3062, 3163, 2063, 4060, 77, ESC 3040, ESC 3043, PKZ 50 |
| Spindle Series (limited power) | SC 80, 81, 4082, 4084, PKZ 25 |

The Precise Corporation

3715 Blue River Ave.
 P.O. Box 085000
 Racine, WI 53408-5000 USA
 Phone: +1 (262) 632-6173
 Fax: +1 (262) 632-6730
 e-mail: precise@precise-corp.com
www.precise-corp.com



Precise Präzisionsspindel GmbH

Am Wallgraben 2 • D-42799 Leichlingen, Germany
 Postfach 1461 • D-42785 Leichlingen
 Telefon: +49 (0 21 75) 9 71 0
 Telefax: +49 (0 21 75) 9 71 99, 9 71 97
 e-mail: precise@precise.de
www.precise.de



Frequency Converters

Types PCA2 1015, 1522, 2030, and 3045

Precise Type PCA2 frequency converters are digital variable speed AC drives. Specially designed PAM (pulse-amplitude-modulated) technology and IGBT devices create a sinusoidal waveform that greatly reduces the sub-harmonics that are normally present in other drives. This cleaner waveform allows high frequency motors to operate continuously at high speeds without excessive heat losses or winding stress. The drive is fully digital, with a microprocessor, easy to use built-in keypad, and a LCD display.

| Model | precise Spindle Type | Input | Output | | | | Dimensions | | | Weight kg [lb] |
|-----------|--|-----------------------------|--|---|-----------------------------|-------------|----------------|---------------|---------------|----------------|
| | | Voltage (V _{RMS}) | Rated continuous current (A _{RMS}) | Peak Current 1 min. (A _{RMS}) | Voltage (V _{RMS}) | Freq. (Hz) | Length mm [in] | Width mm [in] | Depth mm [in] | |
| PCA2 1015 | SC 80 Series, SC 4082/4084, PKZ 25 | from 3 x 380V to 3 x 480V | 10 | 15 | 3 x 0-460V | 0 – 4000 Hz | 557 [21.9"] | 221.5 [9"] | 262 [10.3"] | 29 kg [64 lb] |
| PCA2 1522 | 2 x SC 80 Series, 2 x SC 4082/4084, 2 x PKZ 25 | | 15 | 22 | | | | | | |
| PCA2 2030 | SC 50100 Series | | 20 | 30 | | | | | | |
| PCA2 3045 | SC 50124, SC 60120 Series | | 30 | 45 | | | | | | |

Features:

- **UL® approved**
- Selective Harmonic Suppression reduces motor losses.
- Terminal board connections for machine control interface
- 5 programmable output relays
- 2 programmable analog outputs
- NEMA 1 design (NEMA 12 option available)
- Remote keypad option
- Dynamic motor braking option



The Precise Corporation

3715 Blue River Ave.
P.O. Box 085000
Racine, WI 53408-5000 USA
Phone: +1 (262) 632-6173
Fax: +1 (262) 632-6730
e-mail: precise@precise-corp.com
www.precise-corp.com



Precise Präzisionsspindeln GmbH

Am Wallgraben 2 • D-42799 Leichlingen, Germany
Postfach 1461 • D-42785 Leichlingen
Telefon: +49 (0 21 75) 9 71 0
Telefax: +49 (0 21 75) 9 71 99, 9 71 97
e-mail: precise@precise.de
www.precise.de



Flux-Vector Frequency Converters

Types PSVA 1522, and 3045

Precise Type PSVA Flux Vector Frequency Converters are digital variable-speed AC drives that give AC-motors DC-motor characteristics. When coupled with **precise** High Speed Spindles equipped with the necessary encoder, this drive provides the benefit of full motor torque down to approx. 1% of maximum speed. Oriented spindle stop positions are easily programmed. The drive is fully digital, with a microprocessor, easy to use built-in keypad, and a LCD display.

| Model | precise Spindle Series | Input | Output | | | | Dimensions | | | Weight kg [lb] |
|------------------|---------------------------------|-----------------------------|--|---|-----------------------------|-------------|----------------|---------------|---------------|----------------|
| | | Voltage (V _{RMS}) | Rated continuous current (A _{RMS}) | Peak Current 1 min. (A _{RMS}) | Voltage (V _{RMS}) | Freq. (Hz) | Length mm [in] | Width mm [in] | Depth mm [in] | |
| PSVA 1522 | VSC 4084 | from 3 x 380V to 3 x 480V | 15 | 22 | 3 x 0-460V | 0 – 1400 Hz | 557 [21.9"] | 221.5 [9"] | 262 [10.3"] | 29 kg [64 lb] |
| PSVA 3045 | VSC 50100, VSC 50120, VSC 60120 | from 3 x 380V to 3 x 480V | 30 | 45 | 3 x 0-460V | 0 – 1400 Hz | 557 [21.9"] | 221.5 [9"] | 262 [10.3"] | 29 kg [64 lb] |

Features:

- Flux-Vector technology provides torque increase, and shaft positioning
- Sine-wave or square-wave encoder input
- Regeneration into line power during deceleration
- 8 programmable stop positions
- Auto-tuning of motor
- Terminal board connections for machine control interface
- 5 programmable output relays
- 2 programmable analog outputs
- NEMA 1 design (NEMA 12 option available)
- Remote keypad option



The Precise Corporation

3715 Blue River Ave.
P.O. Box 085000
Racine, WI 53408-5000 USA
Phone: +1 (262) 632-6173
Fax: +1 (262) 632-6730
e-mail: precise@precise-corp.com
www.precise-corp.com



precise

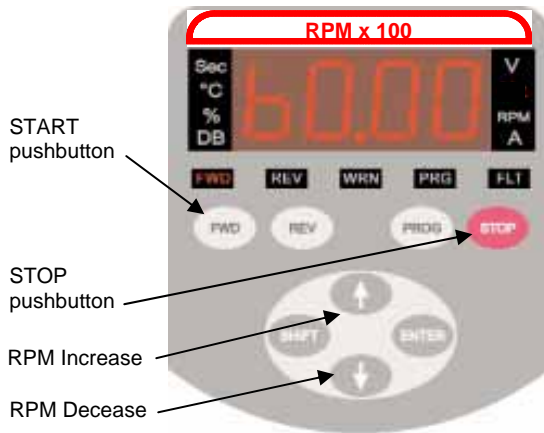
Precise Präzisionsspindeln GmbH

Am Wallgraben 2 • D-42799 Leichlingen, Germany
Postfach 1461 • D-42785 Leichlingen
Telefon: +49 (0 21 75) 9 71 0
Telefax: +49 (0 21 75) 9 71 99, 9 71 97
e-mail: precise@precise.de
www.precise.de



Frequency Converters

Type PCW 310



The **precise** Type PCW 310 frequency converter is a compact, digital AC drive that provides variable speed control of **precise** high frequency spindles. Type PCW frequency converters are factory programmed for the exact voltage / frequency output, current limit, and accel/decel times for the spindle used.

Precise spindle system installation is easy using the built-in cable with electrical connector for connection of the spindle power cable.

Features:

- Proven reliable operation up to 1000 Hz (60,000 rpm).
- 3-phase output
- LED rpm display
- FWD and STOP pushbuttons
- Electronic monitoring of spindle thermistor
- Electronic motor overload protection
- Protection against ground fault, output short circuit, over-voltage, under-voltage, and over-temperature
- Cable with connector for input power connection
- Cable with connector for spindle connection

| SPECIFICATIONS | PCW 310 |
|---------------------------|--|
| Input power | 200 - 230 V (+ 15%, -15%), 1 phase, 50/60 Hz, 11.0 A |
| Maximum Continuous Output | 0 - 230 VAC, 0 - 1000 Hz, 9.6 A, 2.2 kW [3 hp] |
| Dimensions (W, H, D) | 142 mm [5.6"], 290 mm [11.4"], 165 mm [6.5"] |
| Weight | 4.1 kg [9 lbs] |
| Spindle Series | PKZ 25, PKZ 50 |

The Precise Corporation

3715 Blue River Ave.
P.O. Box 085000
Racine, WI 53408-5000 USA
Phone: +1 (262) 632-6173
Fax: +1 (262) 632-6730
e-mail: precise@precise-corp.com
www.precise-corp.com



Precise Präzisionsspindel GmbH

Am Wallgraben 2 • D-42799 Leichlingen, Germany
Postfach 1461 • D-42785 Leichlingen
Telefon: +49 (0 21 75) 9 71 0
Telefax: +49 (0 21 75) 9 71 99, 9 71 97
e-mail: precise@precise.de
www.precise.de



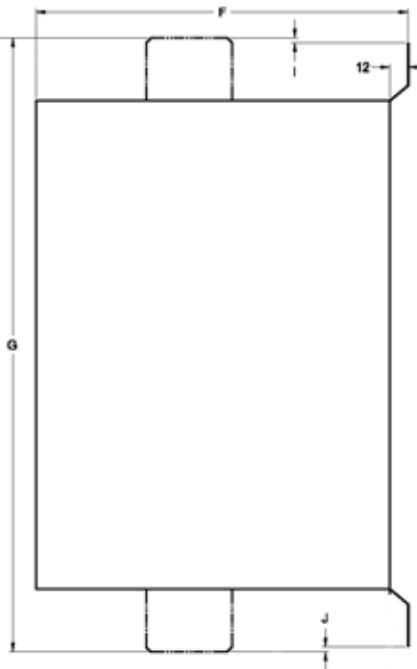
Frequency Converters

Types PSB 11 and PSB 37

Precise Type PSB converter series are state-of-the-art digital drives, providing low-loss speed control of precise spindles with 3-phase synchronous motors (SD Series spindles). The controlled sinusoidal current produces a decisive improvement in pulse-width-modulation technology, resulting in extremely smooth, constant-torque motor operation.



| Model | precise Spindle Type | INPUT | OUTPUT | | |
|--------|----------------------|------------------------------------|--|-------------------------------|------------------------------|
| | | Voltage (V _{RMS}) | Rated output current (A _{RMS}) | Continuous output current (A) | Connectable motor power (kW) |
| PSB 11 | SD 5084 | from 3 x 380V to 3 x 460V, +/- 15% | 22.5 | 24.8 | 11.0 |
| PSB 37 | SD 60124 | | 71.0 | 78.1 | 37.0 |



| Model | Dimensions | | | | | | | Weight |
|--------|------------|-----|-----|-----|----|-----|-----|---------|
| | A | B | C | D | E | F | G | |
| PSB 11 | 135 | 395 | 379 | 95 | 20 | 252 | - | 8.2 kg |
| PSB 37 | 345 | - | 488 | 285 | 30 | 252 | 512 | 26.5 kg |

Features:

- Mains supply voltage 3 x (380...460)V
- Metal housing (optimized EMV compensation)
- RS485 interface; optional RS232 interface in addition; CAN-Bus
- Plug-in control terminals
- Numerous programmable output features
- LCD display
- PSB 11 includes output choke, and PSB 37 includes output choke and input filter

The Precise Corporation

3715 Blue River Ave.
P.O. Box 085000
Racine, WI 53408-5000 USA
Phone: +1 (262) 632-6173
Fax: +1 (262) 632-6730
e-mail: precise@precise-corp.com
www.precise-corp.com



Precise Präzisionsspindeln GmbH

Am Wallgraben 2 • D-42799 Leichlingen, Germany
Postfach 1461 • D-42785 Leichlingen
Telefon: +49 (0 21 75) 9 71 0
Telefax: +49 (0 21 75) 9 71 99, 9 71 97
e-mail: precise@precise.de
www.precise.de

Coolant Circulation Systems

Types 7136 and 7137

Precise Types 7136 / 7137 Coolant Circulation Systems are designed to provide a circulating supply of clean coolant water to **precise** liquid cooled spindles Types SC 40, ESC 3040/3043, SC 60, SC 3062, SC 3163, SC 4060, PKZ 50, and PKZ 25 (limited power). This unit is a completely self-contained coolant system consisting of a sealed reservoir, circulating pump, and air-cooled heat exchanger.

The Coolant Circulation System will operate virtually maintenance free, supplying coolant water at the recommended temperature and pressure for environments where the ambient air temperature is 30°C [86 °F] or less. For applications where the ambient air temperature will exceed 30°C, we recommend the **precise** RCS Refrigerated Cooling System.

FEATURES:

- Cooling capacity *: 400 W [1366 BTU/hr] at 24°C [74°F] air temp.
- 11.4 liter [3 gallon] stainless steel tank
- dimensions: 540 mm [21.3"] length
333 mm [13.1"] width
425 mm [16.2"] height
- weight: 19.5 kg [43 lb]
- dependable positive displacement pump
- capable of dual-spindle applications
- includes recommended Dowtherm SR1 coolant conditioner:
Cat. #329994, 1 gallon
- available with or without electronic flow switch for spindle protection



With Flow Switch Interlock:

Type 7136, Cat. #332370: 115 V, 60 Hz, 4.6 A

Type 7137, Cat. #332371: 230 V, 50/60 Hz, 2.3 A

Without Flow Switch Interlock:

Type 7136, Cat. #333157: 115 V, 60 Hz, 4.6 A

Type 7137, Cat. #333158: 230 V, 50/60 Hz, 2.3 A

* Cooling capacity rating is based on a maximum allowable water temperature out of the spindle of 34°C [93°F]

The Precise Corporation

3715 Blue River Ave.
P.O. Box 085000
Racine, WI 53408-5000 USA
Phone: +1 (262) 632-6173
Fax: +1 (262) 632-6730
e-mail: precise@precise-corp.com
www.precise-corp.com

Precise Präzisionsspindel GmbH

Am Wallgraben 2 • D-42799 Leichlingen, Germany
Postfach 1461 • D-42785 Leichlingen
Telefon: +49 (0 21 75) 9 71 0
Telefax: +49 (0 21 75) 9 71 99, 9 71 97
e-mail: precise@precise.de
www.precise.de



Cooling Circulation Systems

Types RCS 1001, 2304, 3508, 5308 Refrigerated Systems

Precise RCS Refrigerated Cooling Systems are designed to provide a recirculating supply of clean coolant water to precise liquid-cooled spindles. The RCS unit is a completely self-contained coolant system consisting of a sealed reservoir, electronic temperature controller, circulating pump, and refrigeration system using HFC-R-134A refrigerant. The RCS unit will operate virtually maintenance-free, supplying coolant water at constant temperature and pressure.



Features:

- Stainless steel tank
- Dependable positive displacement pump
- Tank temperature controlled to +/- 1°C
- Sight glass for coolant level
- Casters for mobility
- Washable air filter
- High/low coolant temperature interlock
- Flow switch interlock
- Digital temperature display
- Pump pressure gage
- Capable of cooling multiple spindles

| SPECIFICATIONS | RCS 1001 | | RCS 2304 | | RCS 3508 | RCS 5308 |
|--------------------|-------------------------------------|-------------------------------------|---------------------------------------|---------------------------------------|------------------------------------|-------------------------------------|
| Cooling capacity | 1050 W [3600 BTU/hr] | | 2340 W [8000 BTU/hr] | | 3520 W [11,000 BTU/hr] | 5275 W [16,500 BTU/hr] |
| Temp. stability | +/- 1° C | | +/- 1 °C | | +/- 1 °C | +/- 1 °C |
| Pump capacity | 3.8 l/min [1 gpm] | | 15.2 l/min [4 gpm] | | 30.3 l/min [8 gpm] | 30.3 l/min [8 gpm] |
| Reservoir volume | 5.6 liters [1.5 gallons] | | 11.4 liters [3 gallons] | | 18.9 liters [5 gallons] | 18.9 liters [5 gallons] |
| Dimensions (HxWxD) | 686 [27"], 406 [16"], 610 [24"] | | 737 [29"], 406 [16"] 660 [26"] | | 908 [36"], 560 [22"], 768 [30"] | 908 [36"], 560 [22"], 768 [30"] |
| Shipping weight | 57 kg [125 lb] | | 86 kg [190 lb] | | 136 kg [300 lbs] | 160 kg [350 lb] |
| Power requirements | 230V, 60 Hz, 7.8A, 1-phase | 220V, 50 Hz, 7.8A, 1-phase | 220V, 50 Hz, 12.2 A, 1-phase | 230V, 60 Hz, 12.2 A, 1-phase | 230V, 60Hz, 14 A, 1-phase | 460V, 60 Hz, 10 A, 3-phase |
| Catalog number | 330696 | 330695 | 330697 | 330698 | 332689 | 331462 |

The Precise Corporation

3715 Blue River Ave.
P.O. Box 085000
Racine, WI 53408-5000 USA
Phone: +1 (262) 632-6173
Fax: +1 (262) 632-6730
e-mail: precise@precise-corp.com
www.precise-corp.com



Precise Präzisionsspindeln GmbH

Am Wallgraben 2 • D-42799 Leichlingen, Germany
Postfach 1461 • D-42785 Leichlingen
Telefon: +49 (0 21 75) 9 71 0
Telefax: +49 (0 21 75) 9 71 99, 9 71 97
e-mail: precise@precise.de
www.precise.de



Pneumatic Preparation Unit

Type PPU #333004

The **precise** Pneumatic Preparation Unit, Type PPU (Cat. #333004), is designed to supply all pneumatic connections for one (1) **precise** spindle. The Type PPU unit contains all of the necessary filters, regulators, and solenoid valves to supply the following air inputs to the spindle:

1. Labyrinth seal air
2. Taper purge
3. Toolholder Eject (release unit advance)



Type PPU Pneumatic Preparation Unit

Input Power Requirement for Solenoid Valve(s): 24 VDC (customer to supply)

Input Air Requirement: Main air supply must be 5.5 bar to 8.2 bar [85 psi – 120 psi], pre-filtered to a 25-micron level (customer to supply)

Dimensions: 280 mm high x 318 mm wide x 178 mm deep [11" high x 12.5" wide x 7" deep]

Output air quality to spindle: Filtered to 5-micron level

Weight: 6.6 kg [13.1 lb]

Type PPU: Catalog #333004

The Precise Corporation

3715 Blue River Ave.
P.O. Box 085000
Racine, WI 53408-5000 USA
Phone: +1 (262) 632-6173
Fax: +1 (262) 632-6730
e-mail: precise@precise-corp.com
www.precise-corp.com



Precise Präzisionsspindel GmbH

Am Wallgraben 2 • D-42799 Leichlingen, Germany
Postfach 1461 • D-42785 Leichlingen
Telefon: +49 (0 21 75) 9 71 0
Telefax: +49 (0 21 75) 9 71 99, 9 71 97
e-mail: precise@precise.de
www.precise.de

Lubrication Systems

Types POAL-2 and POAL-4 Oil-Air Lubricator

Precise Type POAL oil-air lubrication systems are used with **precise** spindles with catalog numbers including the designation “-OA” (e.g. SC 50102-OA). The POAL oil-air lubrication system lubricates each bearing independently (POAL-2 for two bearings, POAL-4 for four bearings), providing the exact amount of oil required. The POAL uses precision oil metering valves and electronically controlled oil pump delivery system. The unit is housed in a sealed enclosure, to help insure years of trouble-free service. Once set-up, the POAL operates essentially maintenance-free, only requiring periodic oil refilling.

Features:

- Dimensions:
336mm high x 285mm wide x 168mm deep
- Factory calibrated oil output for **precise** spindle system.
Only a simple air pressure adjustment required.
- 1.8 liter oil reservoir
- Fully interlocked with **precise** Spindle System to stop spindle in case of:
 - low oil level
 - low air pressure
 - low oil pressure
- Electronically controlled pump
- Input Power Requirements:
 - 220/240 VAC
 - 50/60 Hz
 - 0.41/0.33 Amps
- Weight: 9.6 kg [21.2 lb]



Type POAL-2: Catalog #329870

Type POAL-4: Catalog #330277

The Precise Corporation

3715 Blue River Ave.
P.O. Box 085000
Racine, WI 53408-5000 USA
Phone: +1 (262) 632-6173
Fax: +1 (262) 632-6730
e-mail: precise@precise-corp.com
www.precise-corp.com



Precise Präzisionsspindeln GmbH

Am Wallgraben 2 • D-42799 Leichlingen, Germany
Postfach 1461 • D-42785 Leichlingen
Telefon: +49 (0 21 75) 9 71 0
Telefax: +49 (0 21 75) 9 71 99, 9 71 97
e-mail: precise@precise.de
www.precise.de

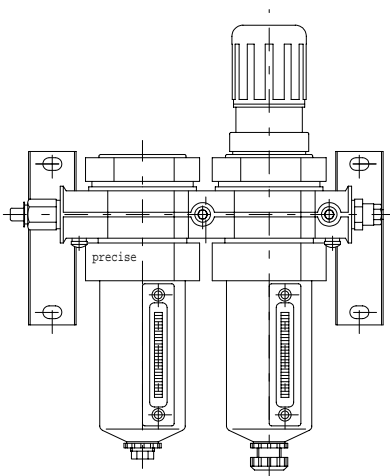


Lubrication Systems

Catalog #331206 Air-Oil-Mist Lubricator

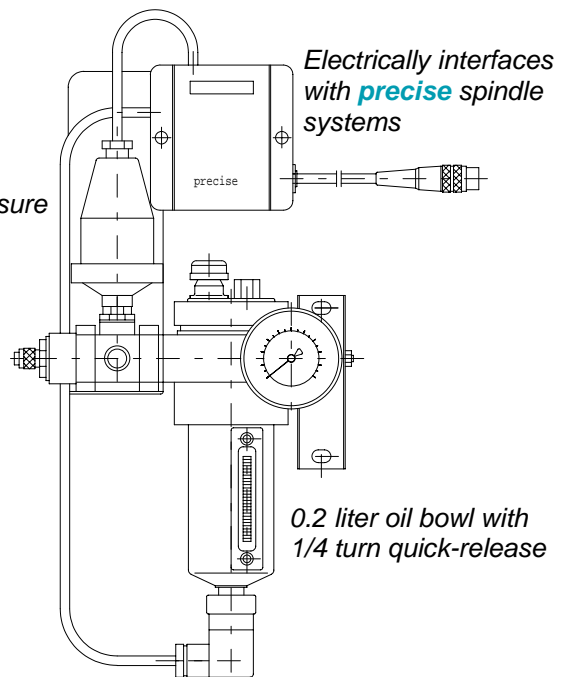
Precise #331206 air-oil-mist lubricator is used with **precise** high frequency spindles with catalog numbers including the designation " - O" (e.g. SC 80-O). The air-oil-mist lubricator provides the essential functions of lubricating the spindle bearings and pressurizing the bearing labyrinth area to help prevent contaminants from entering. Use only MOBIL Velocite #10 oil filtered to 1-micron level with **precise** high frequency spindles. Order **precise** Cat. #327595, 1-quart container.

FEATURES:



40-micron pre-filter
with automatic drain

5-micron final filter



Electrically interfaces
with **precise** spindle
systems

Air pressure
switch

0.2 liter oil bowl with
1/4 turn quick-release

Low oil level switch

The Precise Corporation

3715 Blue River Ave.
P.O. Box 085000
Racine, WI 53408-5000 USA
Phone: +1 (262) 632-6173
Fax: +1 (262) 632-6730
e-mail: precise@precise-corp.com
www.precise-corp.com



precise

Precise Präzisionsspindeln GmbH

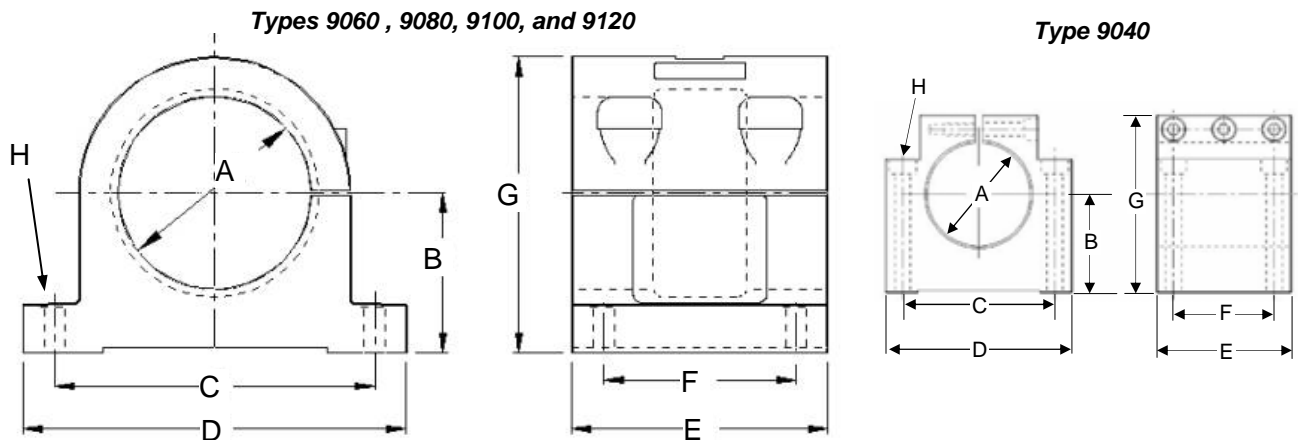
Am Wallgraben 2 • D-42799 Leichlingen, Germany
Postfach 1461 • D-42785 Leichlingen
Telefon: +49 (0 21 75) 9 71 0
Telefax: +49 (0 21 75) 9 71 99, 9 71 97
e-mail: precise@precise.de
www.precise.de



Machine Tool Mounts

Types 9040 / 9060 / 9080 / 9100 / 9120

Precise Machine Tool Mounts are precisely machined cast-iron split-clamp mounts, providing maximum rigidity and vibration dampening qualities. Type 9040 machine tool mount is a precisely machined black anodized aluminum split-clamp mount. All **precise** Machine Tool Mounts have a precisely ground bore, to provide uniform clamping over the entire spindle diameter. All mounts have a flanged base with four mounting holes for easy installation.



| TYPE | CAT. # | Ø A | B | C | D | E | F | G | H (mounting holes) | Weight |
|------|--------|--------------------|-----|-----|------|-----|-----|------|--|--------------------|
| 9040 | 330299 | 42 H7 | 40 | 62 | 76.2 | 55 | 41 | 72.5 | 4 x Ø 6.6 hole with Ø 10.5 counterbore | 0.5 kg [1.1 lb] |
| 9060 | 406705 | 60 H7 | 50 | 104 | 120 | 76 | 50 | 92 | 4 x Ø 8.8 hole with Ø 13.5 counterbore | 2.5 kg [5.5 lb] |
| | 406706 | 61.91 [2.4375"] | | | | | | | | |
| 9080 | 408704 | 76.2 [3"] | 65 | 136 | 160 | 120 | 80 | 120 | 4 x Ø 10.8 hole with Ø 16.5 counterbore | 6.75 kg [15 lb] |
| | 408705 | 80 H7 | | | | | | | | |
| 9100 | 410705 | 100 H7 | 100 | 180 | 210 | 120 | 80 | 175 | 4 x Ø 10.8 hole with Ø 16.5 counterbore | 13.9 kg [31 lb] |
| 9120 | 412705 | 120 H7 | 100 | 200 | 240 | 160 | 120 | 185 | 4 x Ø 12.8 hole with Ø 18.5 counterbore | 20.1 kg [44 lb] |

All dimensions in mm, except where noted. Contact **precise** for detailed drawings if needed.

The Precise Corporation

3715 Blue River Ave.
P.O. Box 085000
Racine, WI 53408-5000 USA
Phone: +1 (262) 632-6173
Fax: +1 (262) 632-6730
e-mail: precise@precise-corp.com
www.precise-corp.com



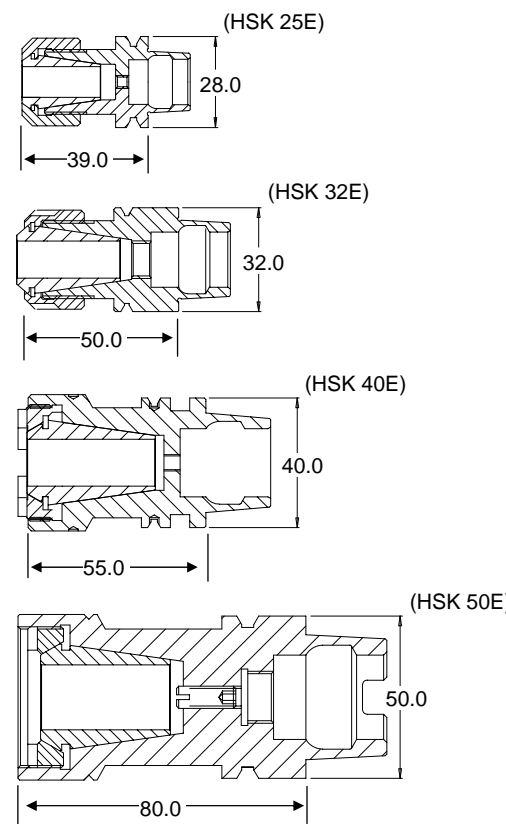
Precise Präzisionsspindeln GmbH

Am Wallgraben 2 • D-42799 Leichlingen, Germany
Postfach 1461 • D-42785 Leichlingen
Telefon: +49 (0 21 75) 9 71 0
Telefax: +49 (0 21 75) 9 71 99, 9 71 97
e-mail: precise@precise.de
www.precise.de

Toolholders

Type ATC 4 (HSK)

| Type | Cat. # | HSK size | precise Spindle Series | Collet Type | Collet Range | Collet Nut # |
|-------------|--------|-------------------------------|--|-------------|------------------------------|-----------------|
| ATC 4-25-16 | 084530 | 25-E (with Ø28mm v-flange) | SC 4084 VSC 4084 | SRP 16 | 3mm to 10mm [1/8" – 3/8"] | External 412621 |
| ATC 4-32-20 | 411425 | 32-E | SD 5084 SC 50104 VSC 50104 | SRP 20 | 3mm to 12mm [1/8" – 1/2"] | External 017008 |
| ATC 4-40-25 | 412638 | 40-E | SC 50124 VSC 50124 SC 60124 VSC 60124 SD 60124 | SRP 20 | 3mm to 16mm [1/8" – 5/8"] | Internal 412657 |
| ATC 4-50-32 | 070800 | 50-E | ESC 70124 | SRP 32 | 3mm to 20mm [1/8" – 3/4"] | Internal 070802 |



The Precise Corporation

3715 Blue River Ave.
P.O. Box 085000
Racine, WI 53408-5000 USA
Phone: +1 (262) 632-6173
Fax: +1 (262) 632-6730
e-mail: precise@precise-corp.com
www.precise-corp.com

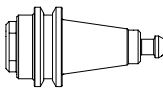
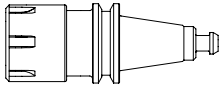
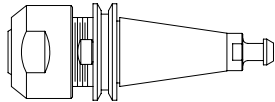
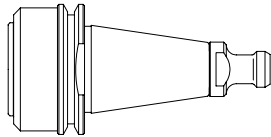
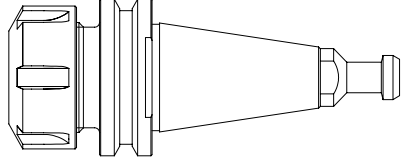


Precise Präzisionsspindel GmbH

Am Wallgraben 2 • D-42799 Leichlingen, Germany
Postfach 1461 • D-42785 Leichlingen
Telefon: +49 (0 21 75) 9 71 0
Telefax: +49 (0 21 75) 9 71 99, 9 71 97
e-mail: precise@precise.de
www.precise.de

Toolholders

Types ATC 2 (Steep Taper)

| Type | Cat. # | Taper Size | precise Spindles | Collet Type | Collet Range | Collet Nut # | Retention Stud # | |
|--------------------|--------|-------------------|--|-------------|--------------------------|-----------------|------------------------|---|
| ATC 2-10-6 | 262504 | Taper size 10 | SC 3062 | SRP 6 | 3mm to 6mm 1/8"-1/4" | Internal 152509 | N/A (stud is integral) |  |
| ATC 2-10-16 | 262514 | Taper size 10 | SC 3062 | SRP 16 | 3mm to 10mm 1/8"-3/8" | External 017064 | N/A (stud is integral) |  |
| ATC 2-20-16 | 182628 | Taper size 20 | SC 4082 | SRP 16 | 3mm to 10mm 1/8"-3/8" | External 412621 | 182632 |  |
| ATC 2-25-20 | 411630 | Taper size 25 | SC 50102 SC 50102-OA VSC 50102 | SRP 20 | 3mm to 12mm 1/8"-1/2" | Internal 411613 | 411390 |  |
| ATC 2-30-25 | 412631 | SK #30, DIN 69871 | SC 60122 SC 60122-OA VSC 60122 ESC 70122 VSC 70122 | SRP 25 | 3mm to 16mm 1/8"-5/8" | External 412623 | 412636 |  |

The Precise Corporation

3715 Blue River Ave.
P.O. Box 085000
Racine, WI 53408-5000 USA
Phone: +1 (262) 632-6173
Fax: +1 (262) 632-6730
e-mail: precise@precise-corp.com
www.precise-corp.com



Precise Präzisionsspindel GmbH

Am Wallgraben 2 • D-42799 Leichlingen, Germany
Postfach 1461 • D-42785 Leichlingen
Telefon: +49 (0 21 75) 9 71 0
Telefax: +49 (0 21 75) 9 71 99, 9 71 97
e-mail: precise@precise.de
www.precise.de