

LED Street Lighting (JRL-50-52-C-A)

PRODUCT FEATURES

- ▶ Use high efficient Nichia LED
- ▶ Long operating lifetime and save energy.
- ▶ Easy to assemble and reduce the maintenance cost.
- ▶ No mercury, environment-friendly.
- ▶ More energy efficiency and wide lighting area than halogen lamps
- ▶ A patented design of configuration, an easy disassembled module.
- ▶ Cooling technology can quickly and effectively to reduce heat.
- ▶ Optical modules with special protection. When the LED does not light up, the protection will start to maintain the lighting

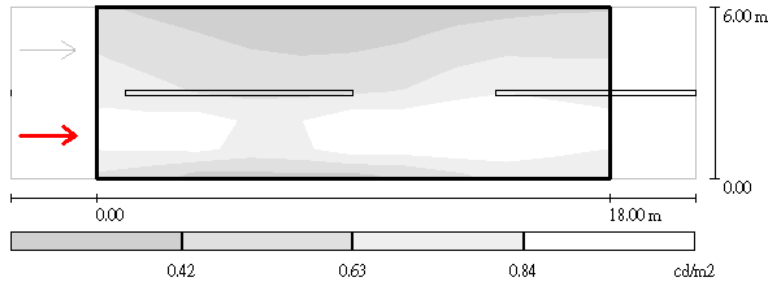


PRODUCT SPECIFICATIONS

Power Consumption	50 W±10%
Color Temperature	5200±400 K (Nature white)
Color Rendering Index	70 (Ra)
AC Input	100~240 VAC
Power Factor	≥0.9
Efficiency of Power Supply	85%
LED Efficacy (Ta=25 ⁰ C)	90 lm/W
Total Lumen (clear cover)	4320lm
Life Time	> 40000 hrs
Storage Temperature	-40°C~80°C
Operating environment	Temperature: -20°C~60°C
Protection Rating	IP 65
Outline Dimensions	729mm x 525mm x 80mm
Weight	14 Kg

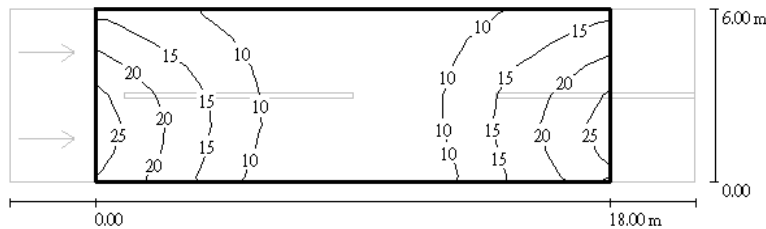
Luminance Distribution (Road R3, lamps high 6m, lamps distance 18m)

Average Luminance (L_{av})	U_0 (L_{min}/L_{ave})	UI (L_{min}/L_{max})
0.67	0.4	0.7

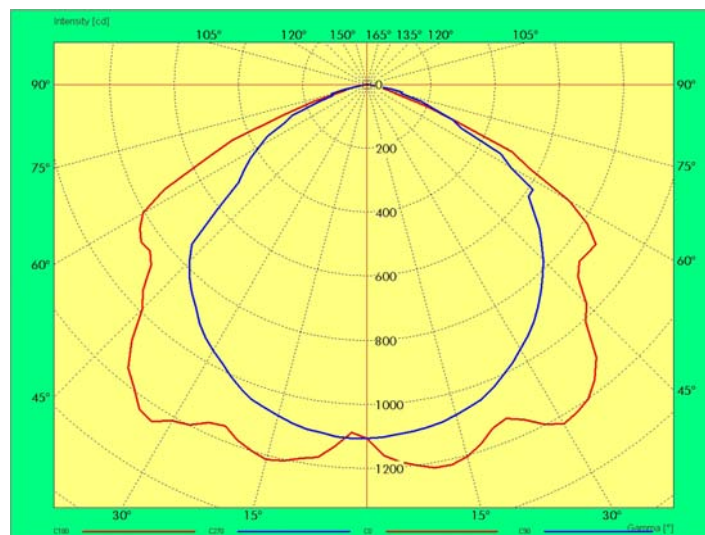


Illumination Distribution (lamps high 6m, lamps distance 18m)

Average Illumination (E_{av})	E_{max}	E_{min}	E_{min}/E_{av}
13	25	5.31	0.41

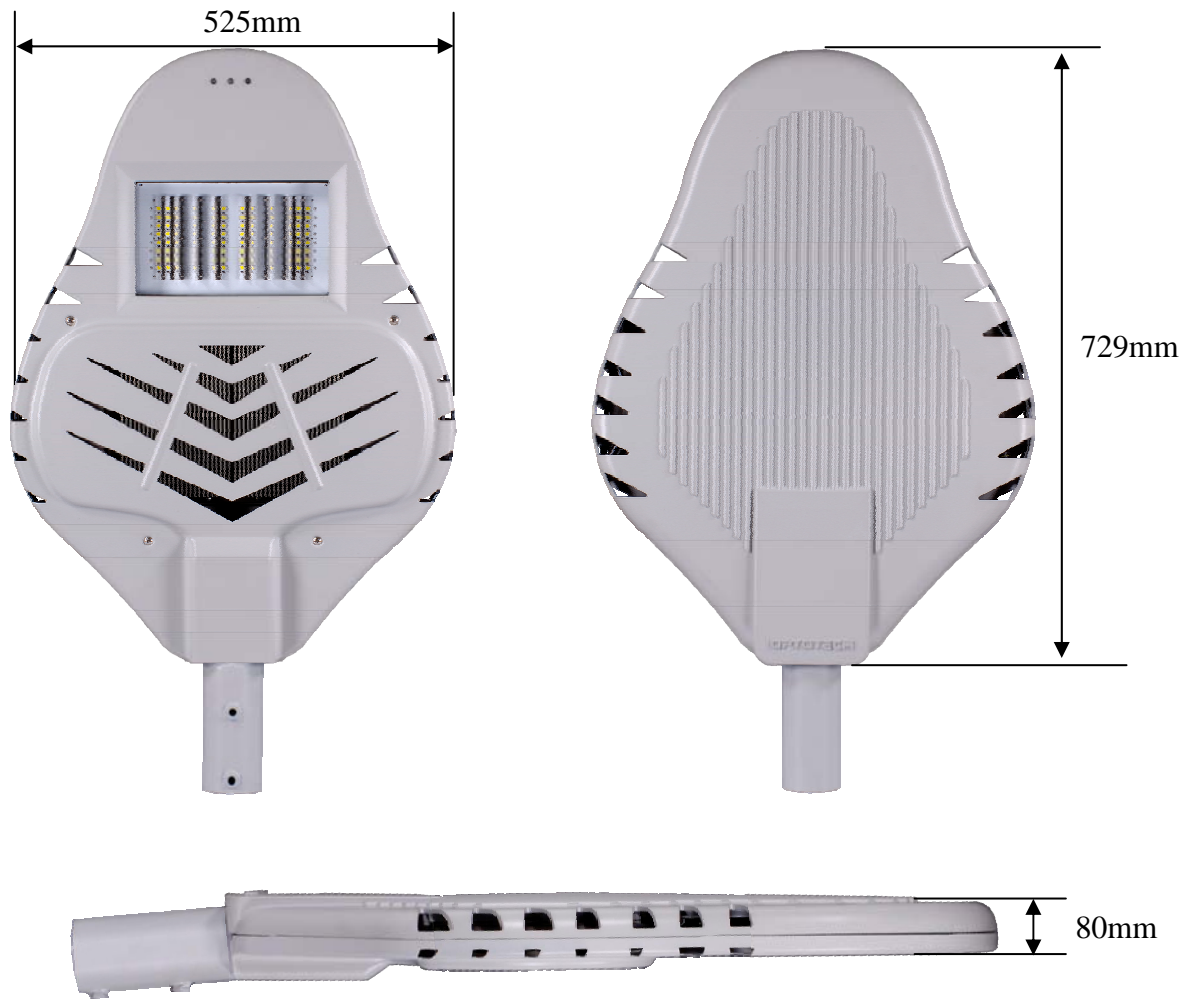


Goniophotometer curve



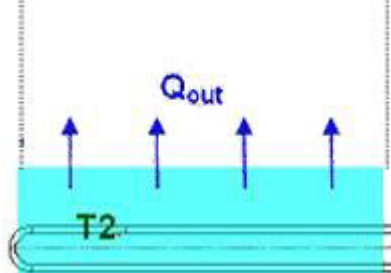
The patented optical module design can be wide angle and uniform light.

Outline Dimensions (unit: mm)

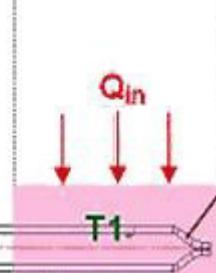


Thermal diagram

Heat sink thermal conductivity



Optical modules heating



Vacuum thermal conductivity of Heat pipe (copper)

Thermal optical module technology will be generated by heat, heat conduction to heat sink. The special fins permutation with heat through convection and radiation fugitive, maintaining street lights within the low temperature.

LED Street Lighting (JRL-100-52-C-A)

PRODUCT FEATURES

- ▶ Use high efficient Nichia LED
- ▶ Long operating lifetime and save energy.
- ▶ Easy to assemble and reduce the maintenance cost.
- ▶ No mercury, environment-friendly.
- ▶ More energy efficiency and wide lighting area than halogen lamps
- ▶ A patented design of configuration, an easy disassembled module.
- ▶ Cooling technology can quickly and effectively to reduce heat.
- ▶ Optical modules with special protection. When the LED does not light up, the protection will start to maintain the lighting

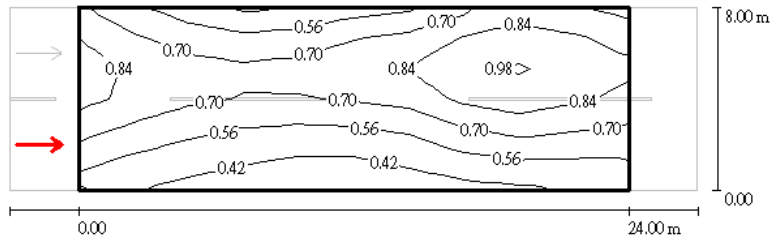


PRODUCT SPECIFICATIONS

Power Consumption	100 W±10%
Color Temperature	5200±400 K (Nature white)
Color Rendering Index	70 (Ra)
AC Input	100~240 VAC
Power Factor	≥0.9
Efficiency of Power Supply	85%
LED Efficacy (Ta=25 ⁰ C)	90 lm/W
Total Lumen (clear cover)	8640 lm
Life Time	> 40000 hrs
Storage Temperature	-40°C~80°C
Operating environment	Temperature: -20°C~60°C
Protection Rating	IP 65
Outline Dimensions	729mm x 525mm x 80mm
Weight	14.5 Kg

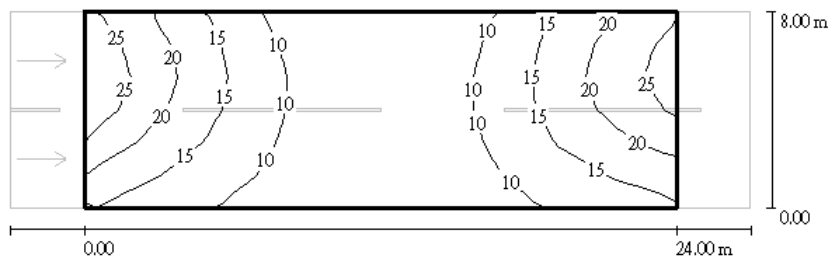
Luminance Distribution (Road R3, lamps high 8m, lamps distance 24m)

Average Luminance (L_{av})	U_0 (L_{min}/L_{ave})	UI (L_{min}/L_{max})
0.7	0.5	0.7

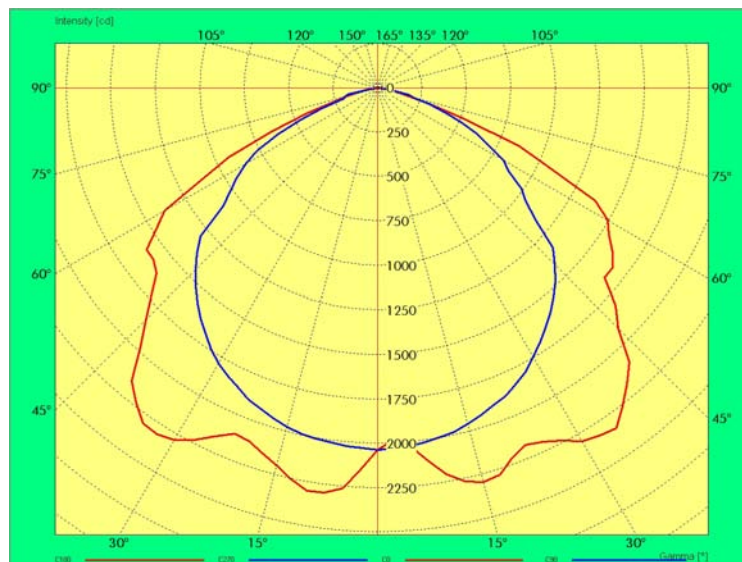


Illumination Distribution (lamps high 8m, lamps distance 24m)

Average Illumination (E_{av})	E_{max}	E_{min}	E_{min}/E_{av}
15	27	5.67	0.4



Goniophotometer curve



The patented optical module design can be wide angle and uniform light.

Outline Dimensions (unit: mm)

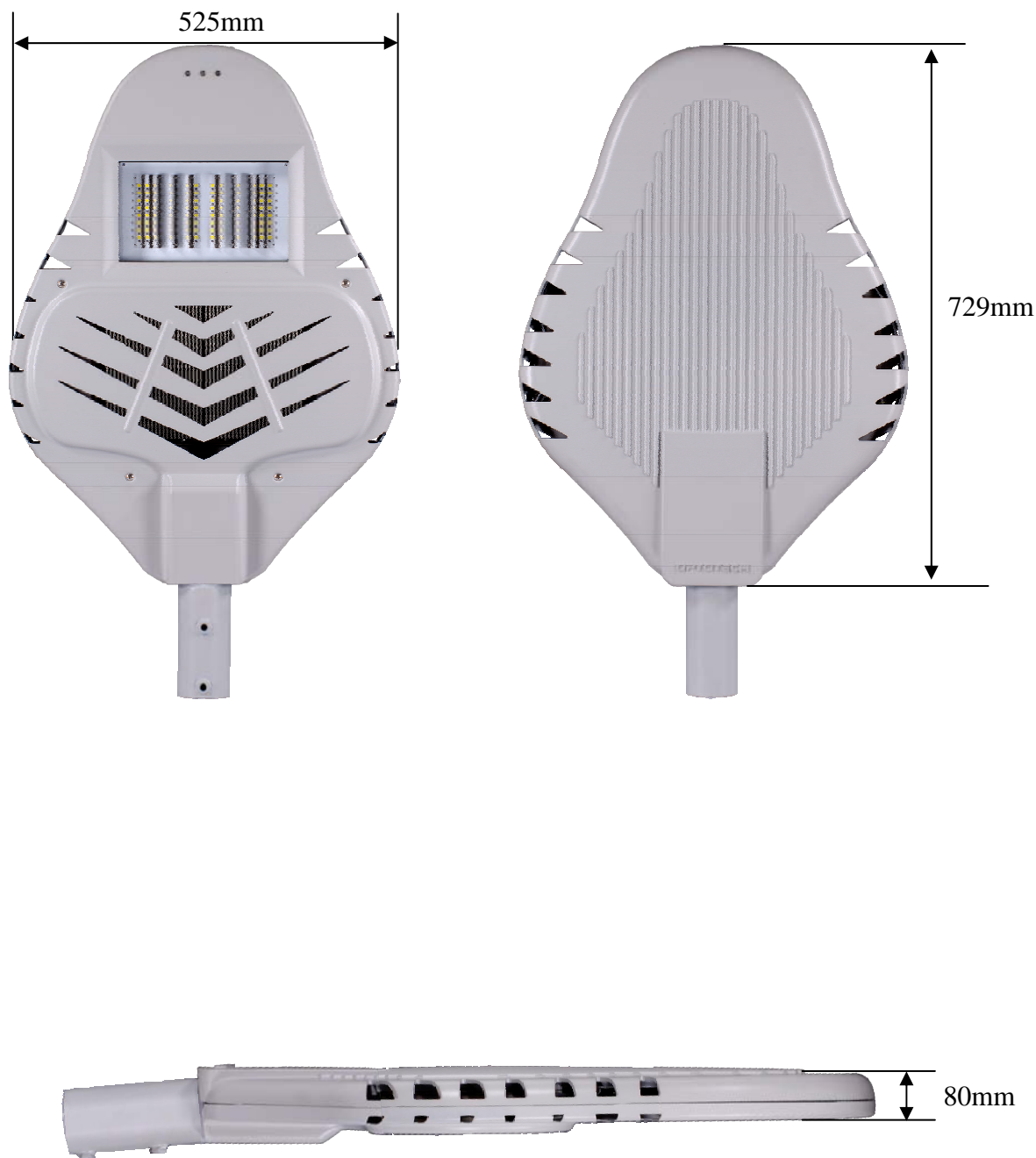
OPTOTECH CORPORATION
 NO. 1, LI-HSIN RD. V,
 HSINCHU SCIENCE PARK,
 HSINCHU 30078, TAIWAN. R.O.C.

T +886-3-5638951 EXT. 23500
 F +886-3-5795718
 E info-system@opto.com.tw

REV. 04

www.opto.com.tw





Exploded Sketch View

OPTOTECH CORPORATION
NO. 1, LI-HSIN RD. V,
HSINCHU SCIENCE PARK,
HSINCHU 30078, TAIWAN. R.O.C.

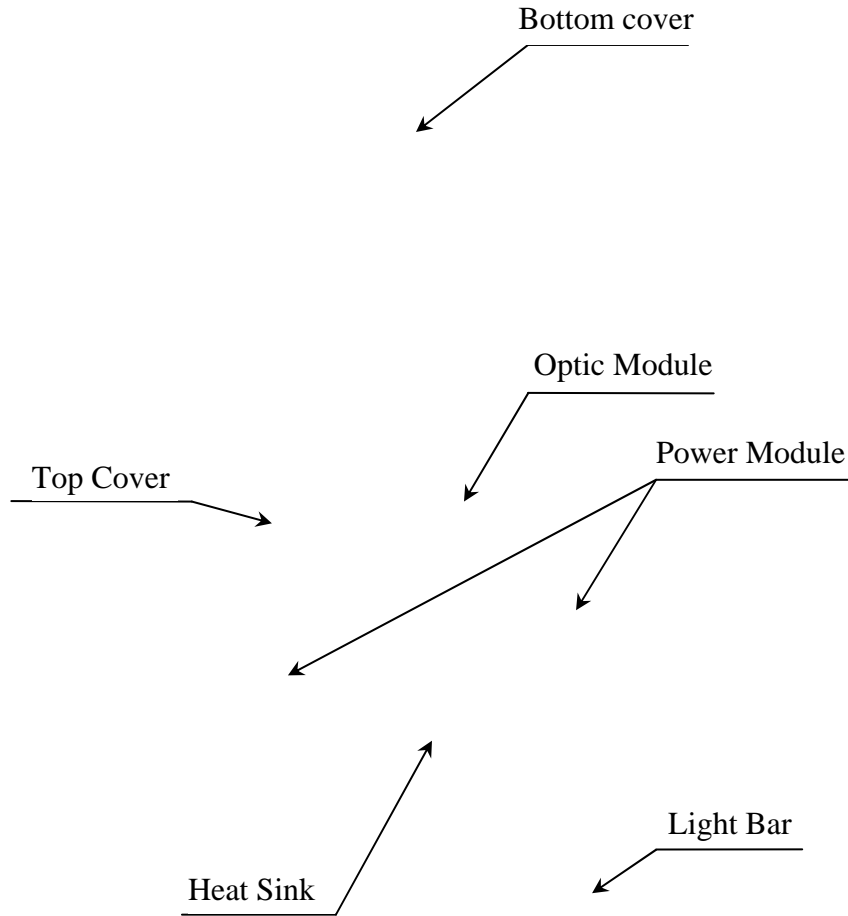
T +886-3-5638... 00
F +886-3-57...
E info-sy...

opto.com.tw

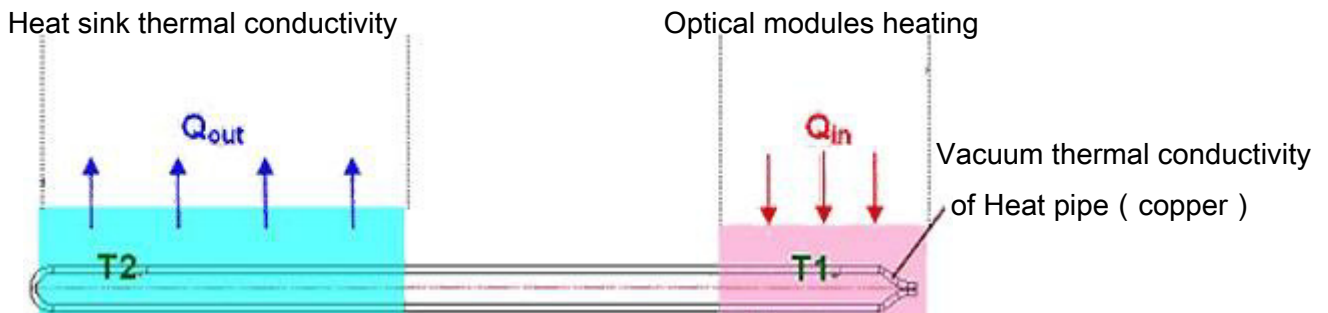
REV. 04



Let your ideas shine



Thermal diagram

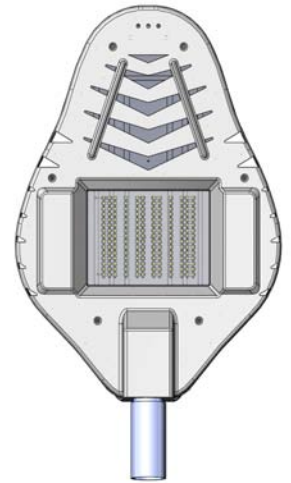


Thermal optical module technology will be generated by heat, heat conduction to heat sink. The special fins permutation with heat through convection and radiation fugitive, maintaining street lights within the low temperature.

LED Street Lighting (JRL-I20-52-C-A)

PRODUCT FEATURES

- ▶ Use high efficient Nichia LED
- ▶ Long operating lifetime and save energy.
- ▶ Easy to assemble and reduce the maintenance cost.
- ▶ No mercury, environment-friendly.
- ▶ More energy efficiency and wide lighting area than halogen lamps
- ▶ A patented design of configuration, an easy disassembled module.
- ▶ Cooling technology can quickly and effectively to reduce heat.
- ▶ Optical modules with special protection. When the LED does not light up, the protection will start to maintain the lighting

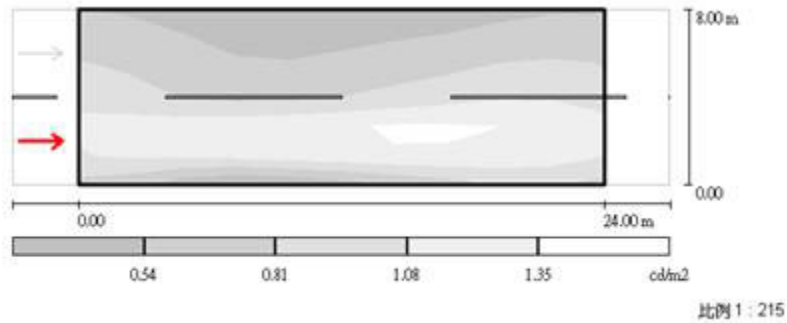


PRODUCT SPECIFICATIONS

Power Consumption	120 W±10%
Color Temperature	5200±400 K (Nature white)
Color Rendering Index	70 (Ra)
AC Input	100~240 VAC
Power Factor	≥0.9
Efficiency of Power Supply	85%
LED Efficacy (Ta=25 ⁰ C)	90 lm/W
Total Lumen (clear cover)	9720 lm
Life Time	> 40000 hrs
Storage Temperature	-40°C~80°C
Operating environment	Temperature: -20°C~60°C
Protection Rating	IP 65
Outline Dimensions	729mm x 525mm x 80mm
Weight	13.5 Kg

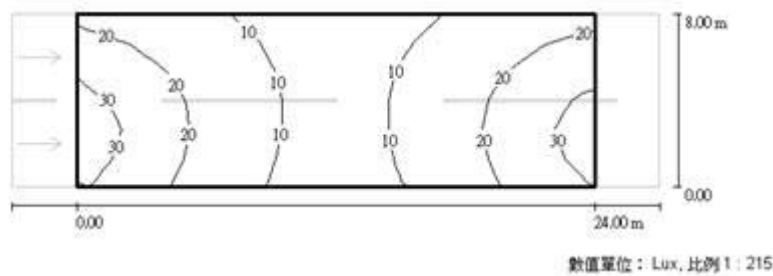
Luminance Distribution (Road R3, lamps high 8m, lamps distance 24m)

Average Luminance (L_{av})	U_0 (L_{min}/L_{ave})	UI (L_{min}/L_{max})
0.9	0.5	0.7

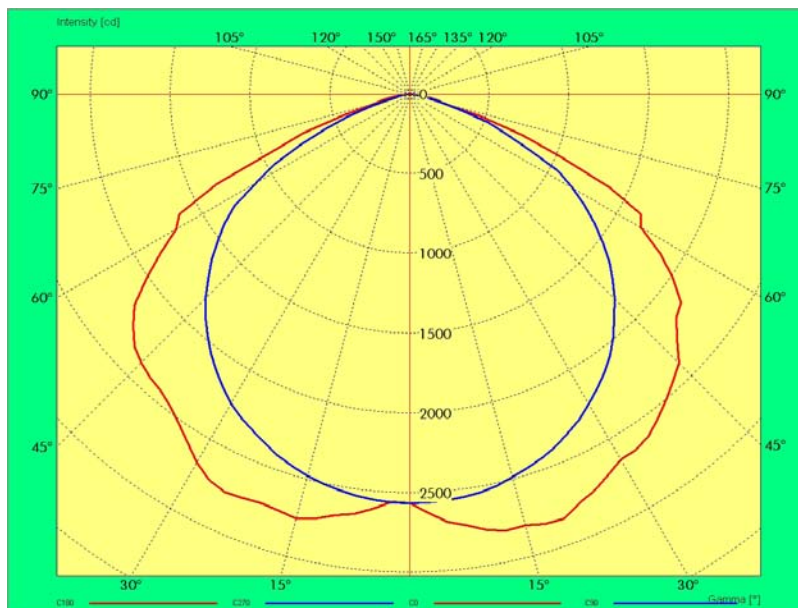


Illumination Distribution (lamps high 8m, lamps distance 24m)

Average Illumination (E_{av})	E_{max}	E_{min}	E_{min}/E_{av}
17	33	7.49	0.45

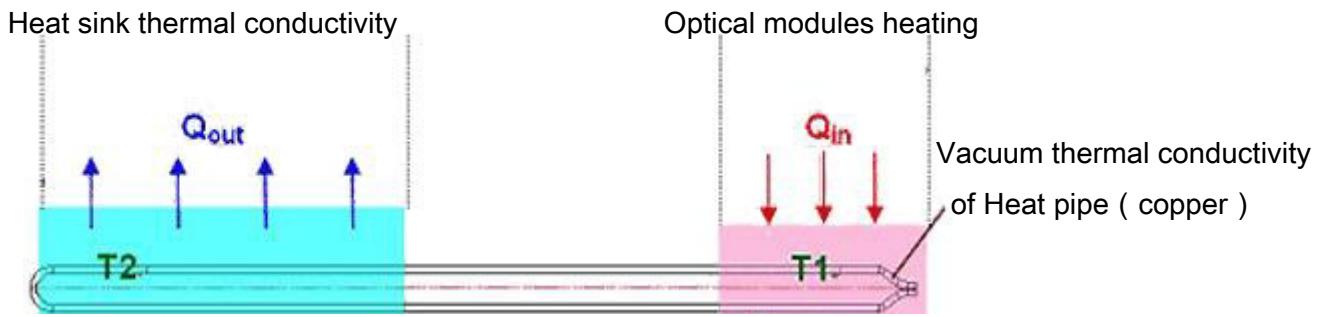


Goniophotometer curve



The patented optical module design can be wide angle and uniform light.

Thermal diagram



Thermal optical module technology will be generated by heat, heat conduction to heat sink. The special fins permutation with heat through convection and radiation fugitive, maintaining street lights within the low temperature.

OPTOTECH CORPORATION
NO. 1, LI-HSIN RD. V,
HSINCHU SCIENCE PARK,
HSINCHU 30078, TAIWAN. R.O.C.

T +886-3-5638951 EXT. 23500
F +886-3-5795718
E info-system@opto.com.tw

REV. 04

www.opto.com.tw

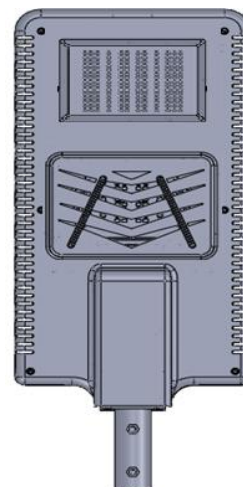


Let your ideas shine

LED Street Lighting (JRL-130-42-R-A)

PRODUCT FEATURES

- ▶ Use high efficient Nichia LED
- ▶ Long operating lifetime and save energy.
- ▶ Easy to assemble and reduce the maintenance cost.
- ▶ No mercury, environment-friendly.
- ▶ More energy efficiency and wide lighting area than halogen lamps
- ▶ A patented design of configuration, an easy disassembled module.
- ▶ Cooling technology can quickly and effectively to reduce heat.
- ▶ Optical modules with special protection. When the LED does not light up, the protection will start to maintain the lighting

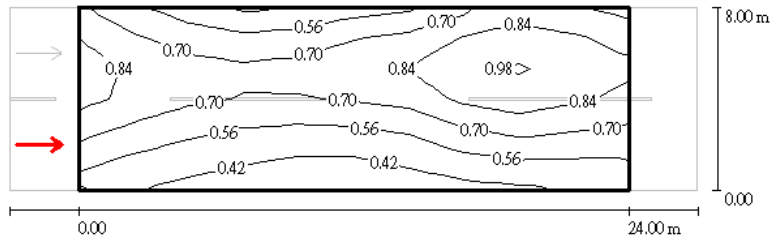


PRODUCT SPECIFICATIONS

Power Consumption	130 W±10%
Color Temperature	4200±400 K (Nature white)
Color Rendering Index	70 (Ra)
AC Input	100~240 VAC
Power Factor	≥0.9
Efficiency of Power Supply	85%
LED Efficacy (Ta=25 ⁰ C)	75 lm/W
Total Lumen (clear cover)	9000 lm
Life Time	> 40000 hrs
Storage Temperature	-40°C~80°C
Operating environment	Temperature: -20°C~60°C
Protection Rating	IP 65
Outline Dimensions	738mm x363mm x 82mm
Weight	13.5 Kg

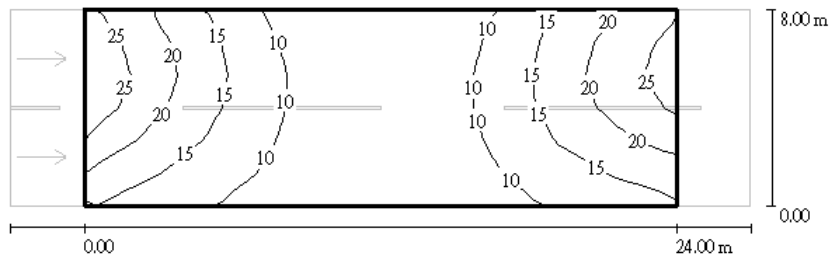
Luminance Distribution (Road R3, lamps high 8m, lamps distance 24m)

Average Luminance (L_{av})	U_0 (L_{min}/L_{ave})	UI (L_{min}/L_{max})
0.7	0.5	0.7

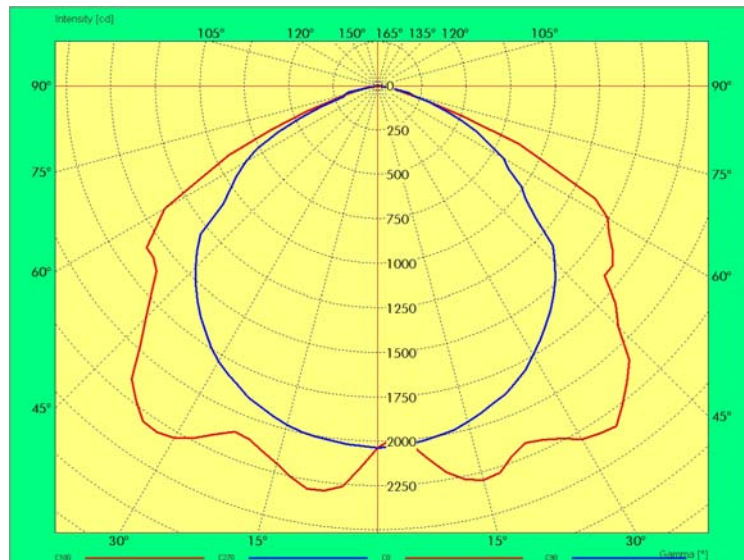


Illumination Distribution (lamps high 8m, lamps distance 24m)

Average Illumination (E_{av})	E_{max}	E_{min}	E_{min}/E_{av}
15	27	5.67	0.4



Goniophotometer curve

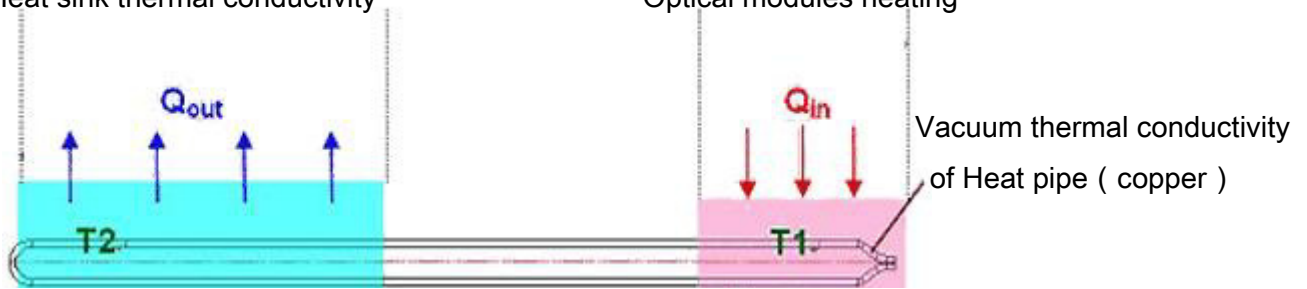


The patented optical module design can be wide angle and uniform light.

Thermal diagram

Heat sink thermal conductivity

Optical modules heating

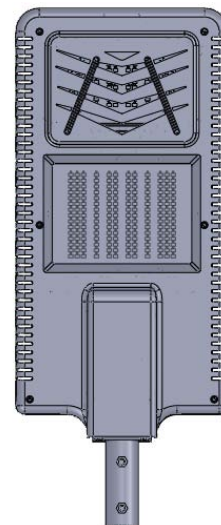


Thermal optical module technology will be generated by heat, heat conduction to heat sink. The special fins permutation with heat through convection and radiation fugitive, maintaining street lights within the low temperature.

LED Street Lighting (JRL-150-52-R-A)

PRODUCT FEATURES

- ▶ Use high efficient Nichia LED
- ▶ Long operating lifetime and save energy.
- ▶ Easy to assemble and reduce the maintenance cost.
- ▶ No mercury, environment-friendly.
- ▶ More energy efficiency and wide lighting area than halogen lamps
- ▶ A patented design of configuration, an easy disassembled module.
- ▶ Cooling technology can quickly and effectively to reduce heat.
- ▶ Optical modules with special protection. When the LED does not light up, the protection will start to maintain the lighting

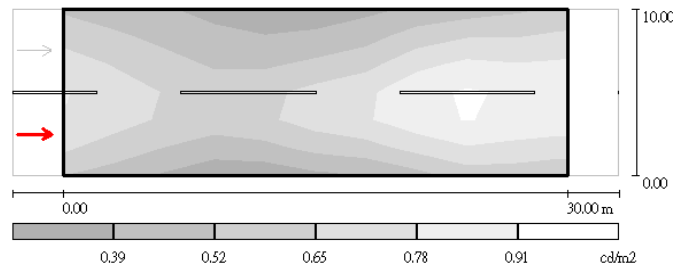


PRODUCT SPECIFICATIONS

Power Consumption	150 W±10%
Color Temperature	5200±400 K
Color Rendering Index	70 (Ra)
AC Input	100~240 VAC
Power Factor	≥0.9
Efficiency of Power Supply	85%
LED Efficacy (Ta=25 ⁰ C)	90lm/W
Total Lumen (clear cover)	12960 lm
Life Time	> 40000 hrs
Storage Temperature	-40°C~80°C
Operating environment	Temperature: -20°C~60°C
Protection Rating	IP 65
Outline Dimensions	738mm x363mm x 82mm
Weight	13.5 Kg

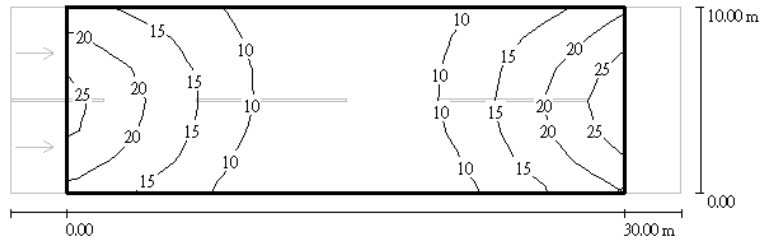
Luminance Distribution (Road R3, lamps high 10m, lamps distance 30m)

Average Luminance (L_{av})	U_0 (L_{min}/L_{ave})	UI (L_{min}/L_{max})
0.63	0.6	0.6



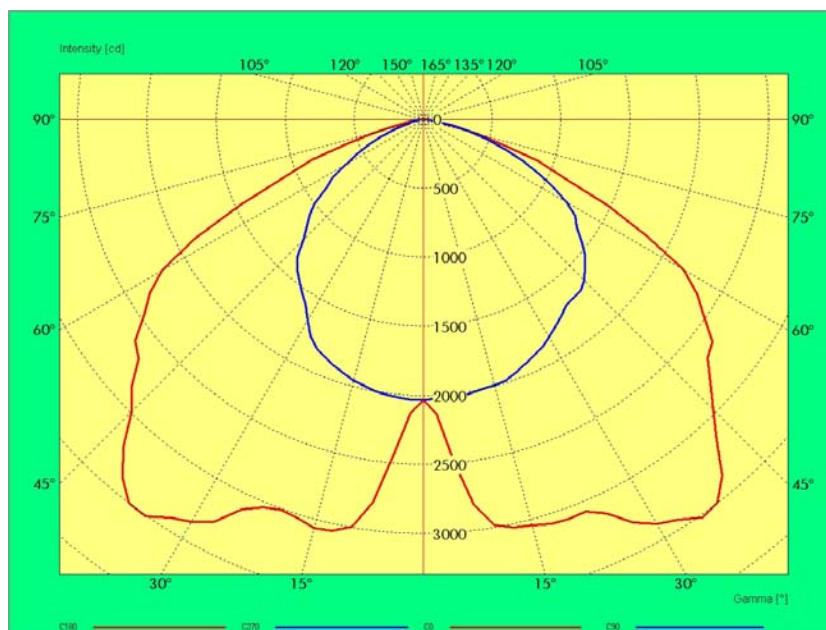
Illumination Distribution (lamps high 10m, lamps distance 30m)

Average Illumination (E_{av})	E_{max}	E_{min}	E_{min}/E_{av}
14	26	5.39	0.4



數值單位：Lux, 比例 1 : 25

Goniophotometer curve

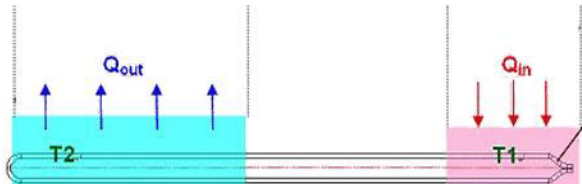


The patented optical module design can be wide angle and uniform light.

Thermal diagram

Heat sink thermal conductivity

Optical modules heating



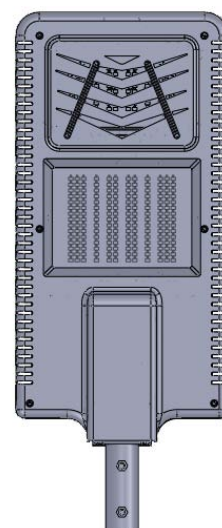
Vacuum thermal conductivity
of Heat pipe (copper)

Thermal optical module technology will be generated by heat, heat conduction to heat sink. The special fins permutation with heat through convection and radiation fugitive, maintaining street lights within the low temperature.

LED Street Lighting (JRL-200-42-R-A)

PRODUCT FEATURES

- ▶ Use high efficient Nichia LED
- ▶ Long operating lifetime and save energy.
- ▶ Easy to assemble and reduce the maintenance cost.
- ▶ No mercury, environment-friendly.
- ▶ More energy efficiency and wide lighting area than halogen lamps
- ▶ A patented design of configuration, an easy disassembled module.
- ▶ Cooling technology can quickly and effectively to reduce heat.
- ▶ Optical modules with special protection. When the LED does not light up, the protection will start to maintain the lighting

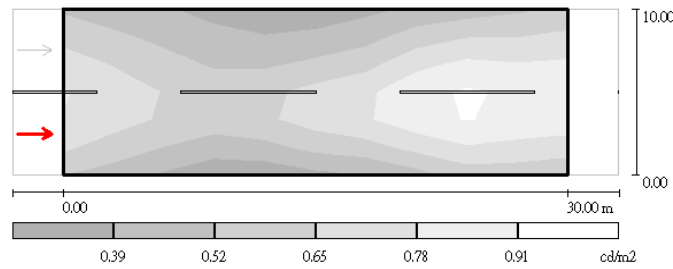


PRODUCT SPECIFICATIONS

Power Consumption	200 W±10%
Color Temperature	4200±400 K
Color Rendering Index	70 (Ra)
AC Input	100~240 VAC
Power Factor	≥0.9
Efficiency of Power Supply	85%
LED Efficacy (Ta=25 ⁰ C)	75lm/W
Total Lumen (clear cover)	13500 lm
Life Time	> 40000 hrs
Storage Temperature	-40°C~80°C
Operating environment	Temperature: -20°C~60°C
Protection Rating	IP 65
Outline Dimensions	738mm x363mm x 82mm
Weight	14 Kg

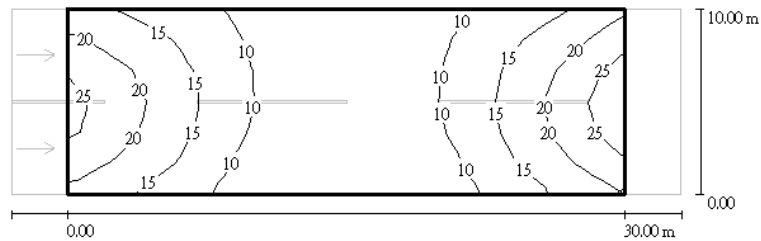
Luminance Distribution (Road R3, lamps high 10m, lamps distance 30m)

Average Luminance (L_{av})	U_0 (L_{min}/L_{ave})	UI (L_{min}/L_{max})
0.63	0.6	0.6



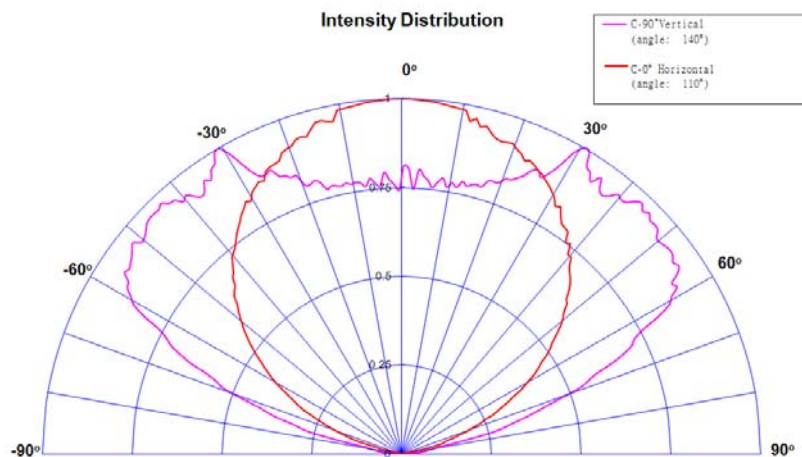
Illumination Distribution (lamps high 10m, lamps distance 30m)

Average Illumination (E_{av})	E_{max}	E_{min}	E_{min}/E_{av}
14	26	5.39	0.4



數值單位：Lux, 比例 1 : 256

Goniophotometer curve

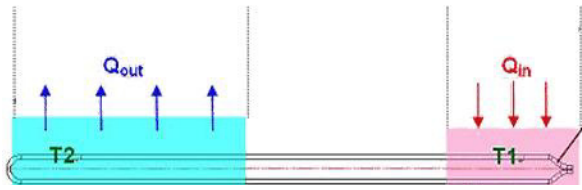


The patented optical module design can be wide angle and uniform light.

Thermal diagram

Heat sink thermal conductivity

Optical modules heating



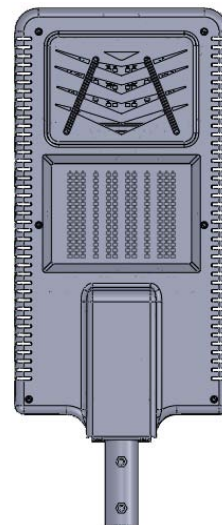
Vacuum thermal conductivity
of Heat pipe (copper)

Thermal optical module technology will be generated by heat, heat conduction to heat sink. The special fins permutation with heat through convection and radiation fugitive, maintaining street lights within the low temperature.

Nm,LED Street Lighting (JRL-200-52-R-A)

PRODUCT FEATURES

- ▶ Use high efficient Nichia LED
- ▶ Long operating lifetime and save energy.
- ▶ Easy to assemble and reduce the maintenance cost.
- ▶ No mercury, environment-friendly.
- ▶ More energy efficiency and wide lighting area than halogen lamps
- ▶ A patented design of configuration, an easy disassembled module.
- ▶ Cooling technology can quickly and effectively to reduce heat.
- ▶ Optical modules with special protection. When the LED does not light up, the protection will start to maintain the lighting

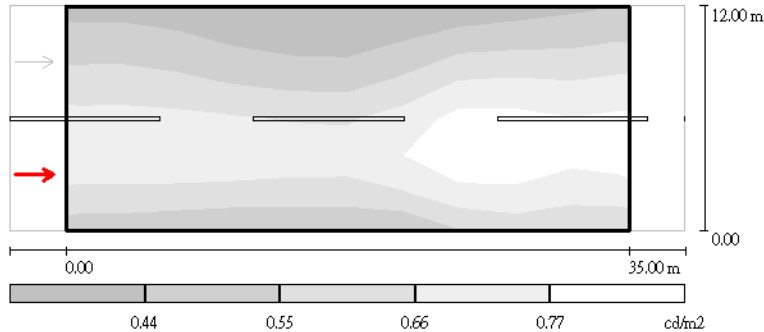


PRODUCT SPECIFICATIONS

Power Consumption	200W±10%
Color Temperature	5200±400 K
Color Rendering Index	70 (Ra)
AC Input	100~240 VAC
Power Factor	≥0.9
Efficiency of Power Supply	85%
LED Efficacy (Ta=25 ⁰ C)	90lm/W
Total Lumen (clear cover)	16200 lm
Life Time	> 40000 hrs
Storage Temperature	-40°C~80°C
Operating environment	Temperature: -20°C~60°C
Protection Rating	IP 65
Outline Dimensions	738mm x363mm x 82mm
Weight	14 Kg

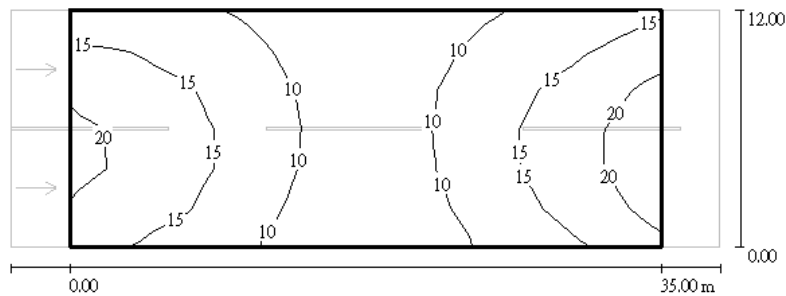
Luminance Distribution (Road R3, lamps high 12m, lamps distance 35m)

Average Luminance (L_{av})	U_0 (L_{min}/L_{ave})	UI (L_{min}/L_{max})
0.64	0.6	0.8

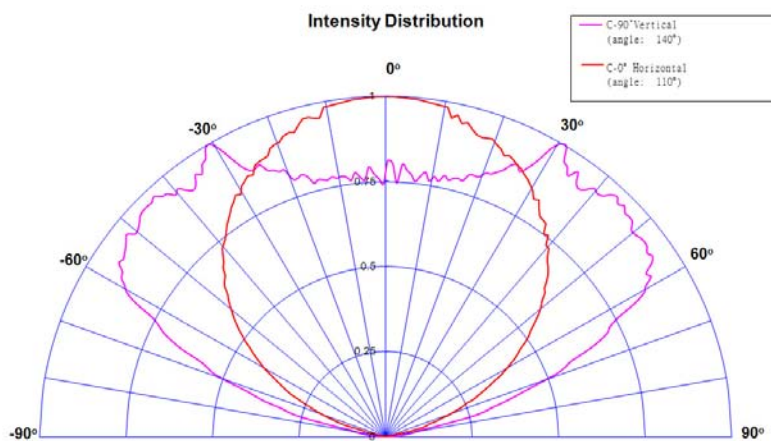


Illumination Distribution (lamps high 12m, lamps distance 35m)

Average Illumination (E_{av})	E_{max}	E_{min}	E_{min}/E_{av}
15	24	7.48	0.54



Goniophotometer curve

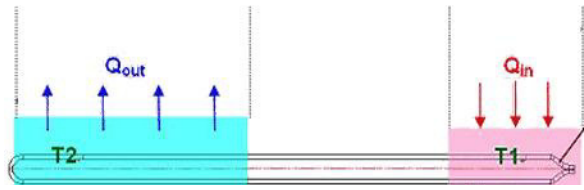


The patented optical module design can be wide angle and uniform light.

Thermal diagram

Heat sink thermal conductivity

Optical modules heating



Vacuum thermal conductivity
of Heat pipe (copper)

Thermal optical module technology will be generated by heat, heat conduction to heat sink. The special fins permutation with heat through convection and radiation fugitive, maintaining street lights within the low temperature.