



# MONZATEK<sup>®</sup>

## MR16 High Power LED



### Color Code

Cool white	Warm white	Red	Green	Blue	Yellow
W	V	R	G	B	Y



### ★ FEATURES

ORDER: MO-0001-A&MO-0001-B
BASE TYPE: GU5.3
INPUT VOLTAGE: 12V AC/DC with reversed polarity protect
INPUT POWER: 1.2W \ 3.6W
OUTPUT POWER: 1.0W \ 3W
TOTAL LENGTH: 50mm(including pins)
BEAM ANGLE: 30degrees
REFLECTOR EFFICIENCY: 90%
LIGHT SOURCE: 1W \ 3W high power LED
LED OUTPUT CURRENT: 350mA \ 700mA
BODY TEMPERATURE: <40°C \ <60°C
LED WORKING TEMPERATURE: <50°C \ <65°C
FULL RANGE OF COLORS: cool white, warm white, blue, green ,red,yellow
ALUMINIUM HOUSING
NO UV OR IR RADIATION
SAFETY ASSURANCE: CE&RoHS

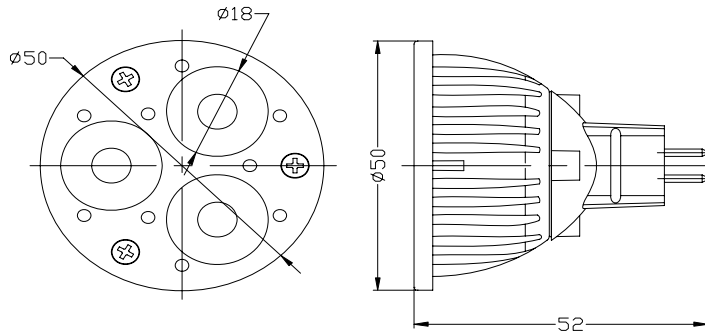


ShenZhen Monzatek Company Ltd  
 Rm806 ChangHong Bldg Sungang Road LuoHu ShenZhen P.R. China  
 Tel:0086-0755-25581275,25894771 Fax:0086-0755-82113326  
 E-mail:robin-fang@vip.163.com Website:www.monzatek.com



# MONZATEK<sup>®</sup>

## MR16 3X1W Spot Lamp



Color Code					
Cool white	Warm white	Red	Green	Blue	Yellow
W	V	R	G	B	Y

★ FEATURES
ORDER: MO-0001
BASE TYPE: GU5.3
INPUT VOLTAGE: 12V AC/DC with reversed polarity protect
INPUT POWER: 4W
OUTPUT POWER: 3.6W
TOTAL LENGTH: 52mm(including pins)
BEAM ANGLE: 15\30\60degrees
REFLECTOR EFFICIENCY: 90%
LIGHT SOURCE: 3*1W high power LED
LED OUTPUT CURRENT: 350mA
BODY TEMPERATURE: <52 degree
LED WORKING TEMPERATURE: <62 degree
FULL RANGE OF COLORS: cool white, warm white, blue, green ,red,yellow
NET WEIGHT: 55g
ALUMINIUM HOUSING
NO UV OR IR RADIATION
SAFETY ASSURANCE: CE&ROHS

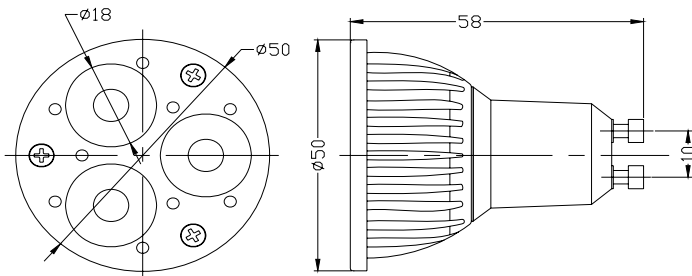


ShenZhen Monzatek Company Ltd  
 Rm806 ChangHong Bldg Sungang Road LuoHu ShenZhen P.R. China  
 Tel:0086-0755-25581275,25894771 Fax:0086-0755-82113326  
 E-mail:robin-fang@vip.163.com Website:www.monzatek.com



# MONZATEK<sup>®</sup>

## GU10 3X1W Spot Lamp



Color Code					
Cool white	Warm white	Red	Green	Blue	Yellow
W	V	R	G	B	Y

★ FEATURES
ORDER: MO-0002
BASE TYPE: GU10
INPUT VOLTAGE: 85--260V AC with reversed polarity protect
INPUT POWER: 4W
OUTPUT POWER: 3.6W
TOTAL LENGTH: 58mm
BEAM ANGLE: 30degrees
REFLECTOR EFFICIENCY: 90%
LIGHT SOURCE: 3*1W high power LED
LED OUTPUT CURRENT: 350mA
BODY TEMPERATURE: <53 degree
LED WORKING TEMPERATURE: <66 degree
FULL RANGE OF COLORS: cool,warm white, blue, green ,red,yellow
NET WEIGHT: 65g
ALUMINIUM HOUSING
NO UV OR IR RADIATION
SAFETY ASSURANCE: CE&RoHS

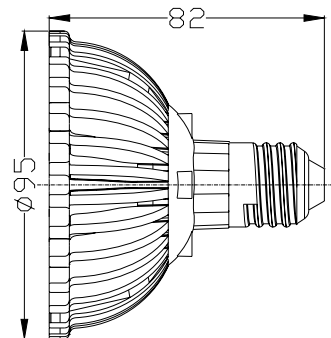
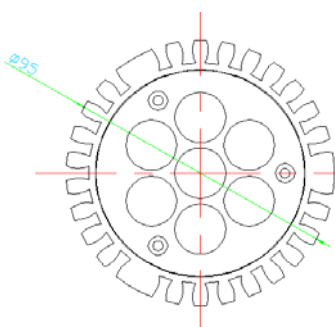


ShenZhen Monzatek Company Ltd  
 Rm806 ChangHong Bldg Sungang Road LuoHu ShenZhen P.R. China  
 Tel:0086-0755-25581275,25894771 Fax:0086-0755-82113326  
 E-mail:robin-fang@vip.163.com Website:www.monzatek.com



# MONZATEK<sup>®</sup>

## PAR30 7X1W Spot Lamp



### Color Code

Cool white	Warm white	Red	Green	Blue	Yellow
W	V	R	G	B	Y

### ★ FEATURES

ORDER: MO-0003
BASE TYPE: E27
INPUT VOLTAGE: 85--260V AC with reversed polarity protect
OUTPUT POWER: 7.0W
TOTAL LENGTH: 82mm
BEAM ANGLE: 30degrees
REFLECTOR EFFICIENCY: 90%
LIGHT SOURCE: 7*1W high power LED
INPUT CURRENT: 320mA
BODY TEMPERATURE: <57 degree
LED WORKING TEMPERATURE: <68 degree
FULL RANGE OF COLORS: cool white, warm white, blue, green ,red,yellow
NET WEIGHT: 300g
ALUMINIUM HOUSING
NO UV OR IR RADIATION
SAFETY ASSURANCE: CE&ROHS

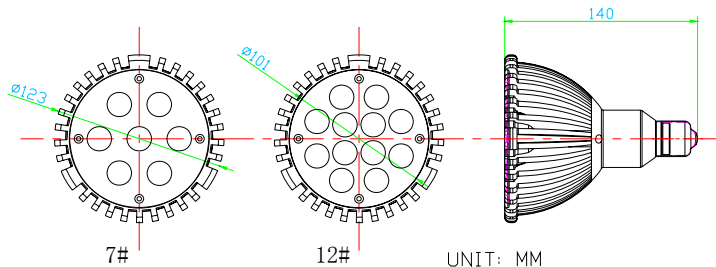


ShenZhen Monzatek Company Ltd  
 Rm806 ChangHong Bldg Sungang Road LuoHu ShenZhen P.R. China  
 Tel:0086-0755-25581275,25894771 Fax:0086-0755-82113326  
 E-mail:robin-fang@vip.163.com Website:www.monzatek.com



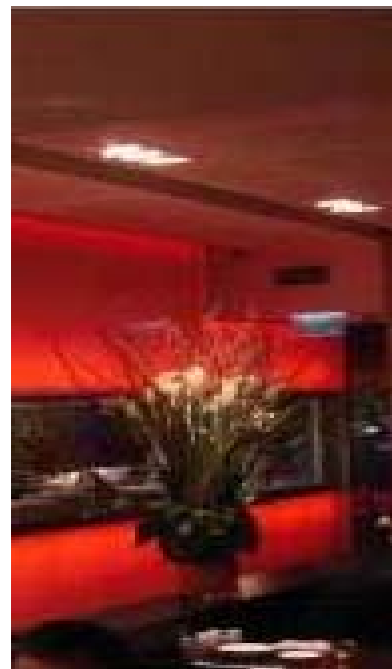
# MONZATEK<sup>®</sup>

## PAR38 7X3W Spot Lamp



Color Code					
Cool white	Warm white	Red	Green	Blue	Yellow
W	V	R	G	B	Y

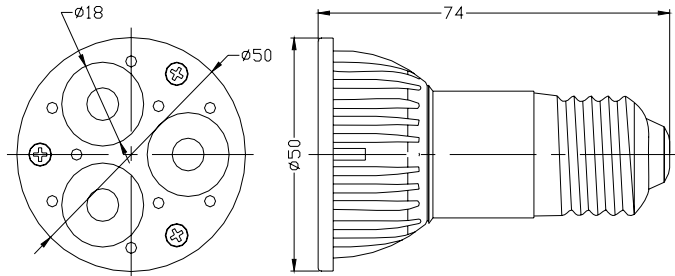
★ FEATURES
ORDER: MO-0004
BASE TYPE: E27
INPUT VOLTAGE: 85--260V AC with reversed polarity protect
OUTPUT POWER: 21W
TOTAL LENGTH: 140mm
BEAM ANGLE: 30degrees
REFLECTOR EFFICIENCY: 90%
LIGHT SOURCE: 3W high power LED
OUTPUT CURRENT: 700mA
BODY TEMPERATURE: <66 degree
LED WORKING TEMPERATURE: <76 degree
FULL RANGE OF COLORS: cool white, warm white, blue, green ,red,yellow
NET WEIGHT: 610g
ALUMINIUM HOUSING
NO UV OR IR RADIATION
SAFETY ASSURANCE: CE&ROHS





# MONZATEK<sup>®</sup>

## E27 3X1W Spot Lamp



### Color Code

Cool white	Warm white	Red	Green	Blue	Yellow
W	V	R	G	B	Y

### ★ FEATURES

ORDER: MO-0005
BASE TYPE: E27
INPUT VOLTAGE: 85--260V AC with reversed polarity protect
INPUT POWER: 4W
OUTPUT POWER: 3.6W
TOTAL LENGTH: 74mm
BEAM ANGLE: 30degrees
REFLECTOR EFFICIENCY: 90%
LIGHT SOURCE: 3*1W high power LED
LED OUTPUT CURRENT: 350mA
BODY TEMPERATURE: <53 degree
LED WORKING TEMPERATURE: <66 degree
FULL RANGE OF COLORS: cool,warm white, blue, green ,red,yellow
NET WEIGHT: 80g
ALUMINIUM HOUSING
NO UV OR IR RADIATION
SAFETY ASSURANCE: CE&RoHS



ShenZhen Monzatek Company Ltd  
 Rm806 ChangHong Bldg Sungang Road LuoHu ShenZhen P.R. China  
 Tel:0086-0755-25581275,25894771 Fax:0086-0755-82113326  
 E-mail:robin-fang@vip.163.com Website:www.monzatek.com