

LED Street Light

Specification

Features and Benefites

- 5 years Guarantee
(50,000hours lifetime @ 70% Lumen maintenance)
- JT (junction temperature) is less than 72
- Environmental Protection: RoSH compliance
- Strong Wind Resistance ability
- 75w LED street light=200w LED HPS street light
60w LED street light=150w LED HPS street light
45w LED street light=100w LED HPS street light



JZSL-75

- Certification: Tested by Guangzhou Testing & Inspection Institute for Household Electrical Appliances. Compliance to National test criterion of GB9468-88, GB/T15240-94, GB7000.1-2002, GB7000.5-96

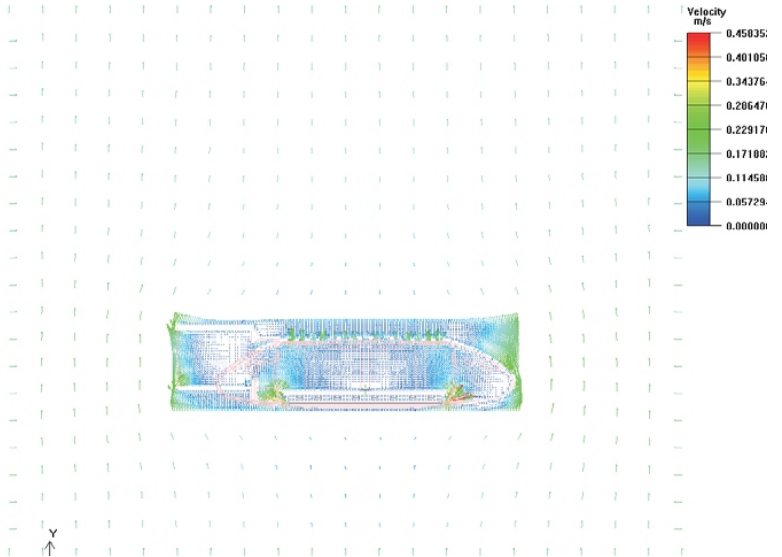
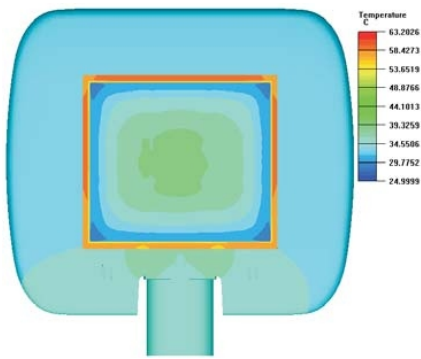


Technical Specification

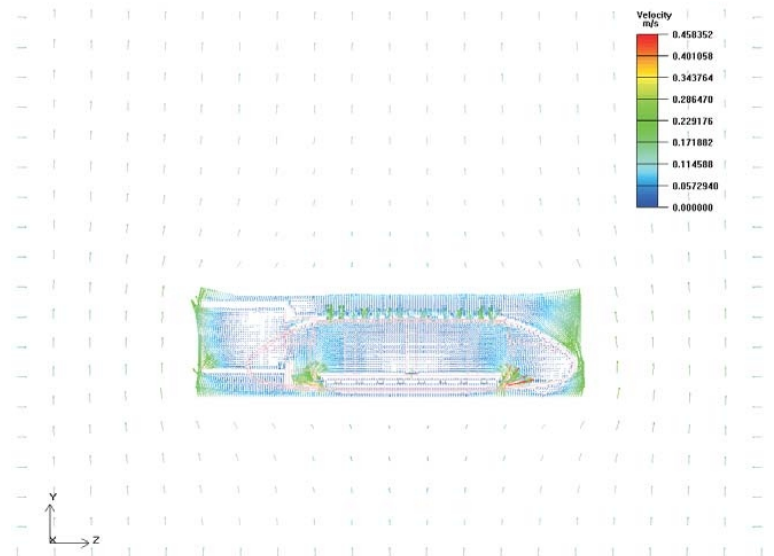
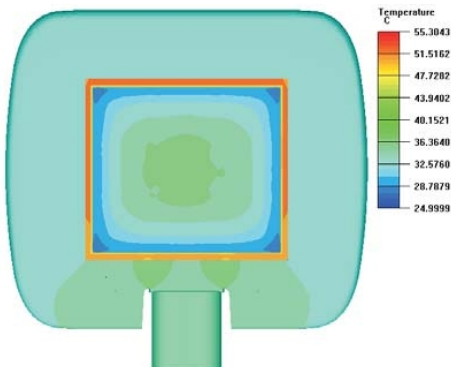
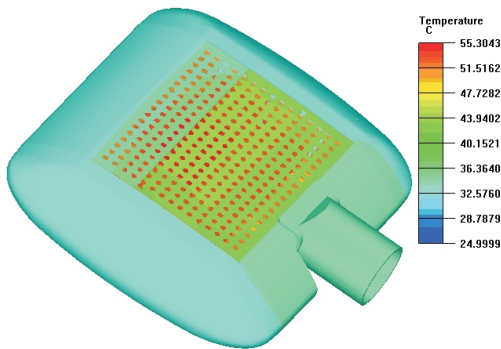
Code No	JZSL-75		JZSL-60		JZSL-45	
No. of LED	1W LED (72pcs)		1W LED (48pcs)		1W LED (36pcs)	
Power Consumption	83W		66W		50W	
No. of LEDs	6*12 PCS		4*12 PCS		3*12 PCS	
Input Voltage	Constant Current : 1980mA		Constant Current : 1320mA		Constant Current : 990mA	
	Range of Voltage : 36-45V		Range of Voltage : 40-50V		Range of Voltage : 36-45V	
Output Lumen	5850lm		4600 lm		3500lm	
CCT	4500-5500K					
CRI	RA ≥ 75					
Efficiency	70lm/W (including power supply)					
Illuminous Flux	H=8M	Max: 28lux	H=6M	Max: 25lux	H=5M	Max: 20lux
		Av: 15lux		Av: 15lux		Av: 12lux
		Min: 8lux		Min: 7lux		Min: 5lux
Efficiency Luminous Range	H=8M:25M*10M		H=6M:18M*8M		H=5M:15M*7M	
Luminous Uniformity	≥ 0.4 (L=3H)					
Input Voltage	AC190-250V ,					
Frequency range	47-53Hz					
Power Factor	≥ 0.97					
Efficiency of Power Supplier	≥ 92%					
LED Drive	330-350mA Constant Current					
Output Voltage	DC36-45V					
Operation Temperature	-30°C- +45°C					
Life Span	50,000Hrs(Keep 70% brightness)					
Dimension	390*345*75	390*345*75		390*345*75		
Material of Body	Aluminum Die Casting, Anti-UV ,PC material					
Weight	6KG					
Protection Rating	IP65					

Thermal Analysis

JZSL-75

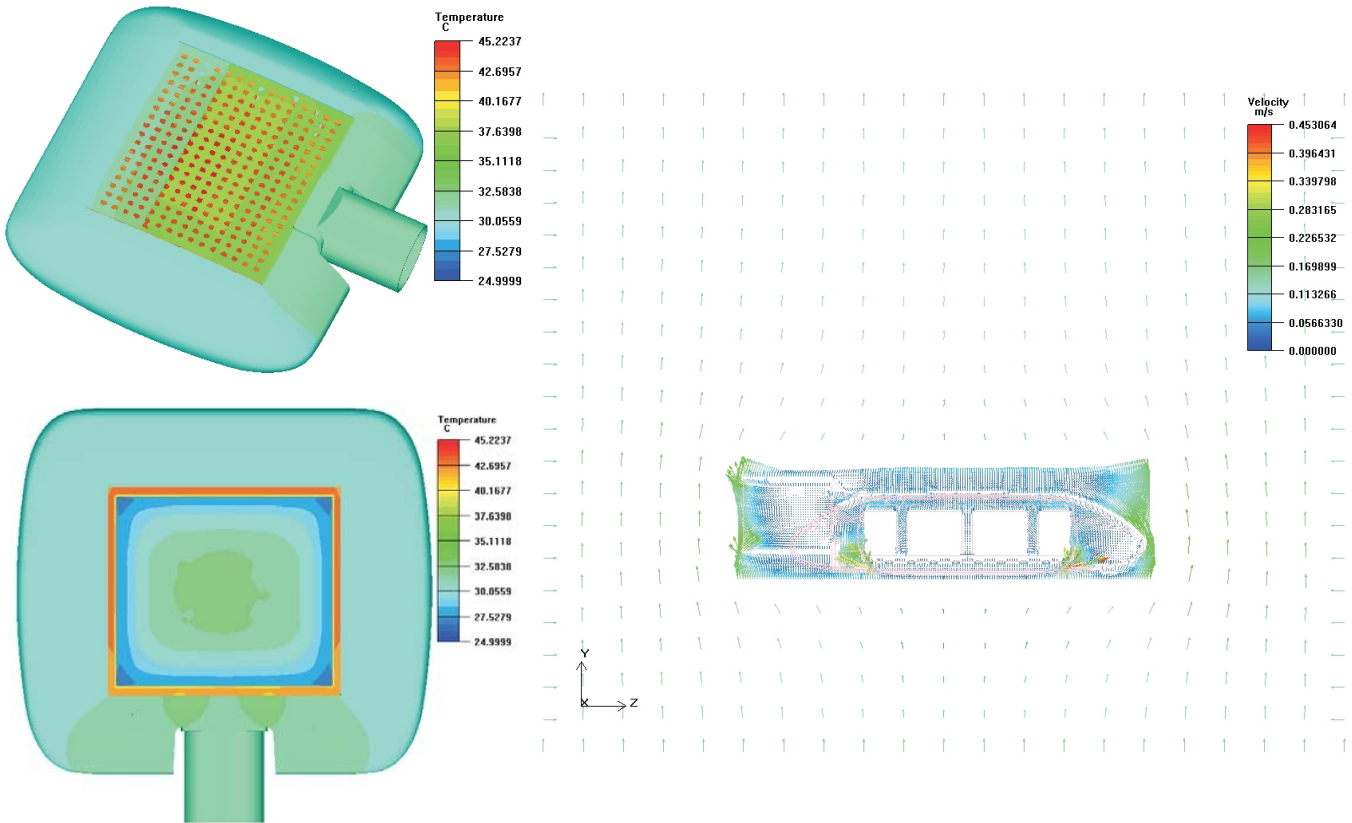


JZSL-60



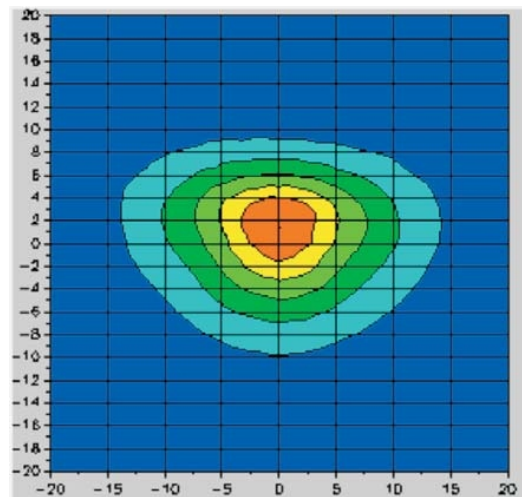
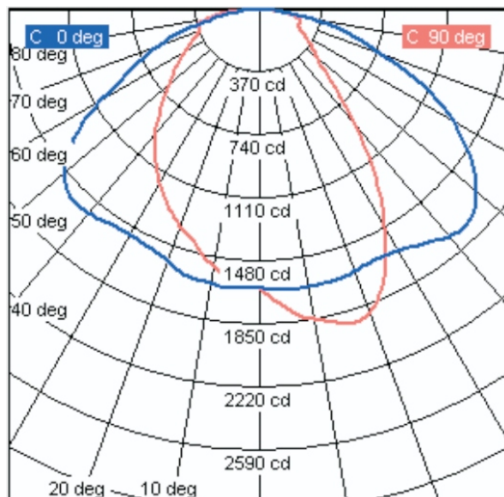
Thermal Analysis

JZSL-45



Candle Power Distribution

JZSL-75/60/45



Technical Comparison

Item	200W HPS	75W LED Street Light
Spectrum	Driven by UV	No UV
CRI	30~50%	80~90%
Max. Illumination	30lux	18lux
Average Illumination	14lux	15lux
Illumination Uniformity	0.38	0.57
Environmental Friendly	Contains Mercury and heavy metal, can not be recycled	Semiconductor chip inside, can be recycle
Smart Control	Single light source, can not be smart controlled	Multi-light source, can be smart controlled
Flicker	High voltage and frequency driven, with flicker	Low voltage DV- driven , no flicker
Working Voltage	High voltage 4000~7000V	36V DC
Working Stability	Off-Peak time over-current drive (250V) reduces the life the light source. The brightness changes with the fluctuation of the power network voltage, which increasing the power consumption, reducing the life span, shortening the light maintenance.	Over-current protection design and voltage regulator design make the brightness of the light stable, and expand the life span.
Light Distribution Design	Spherical light output, curvy reflect cover design, mature design, good light uniformity, high temperature causes reflect cover aging, effects the light output and refelctivity.	Directly light on ground, high luminous effeciency, complex light distribution design. Cold light source won't cause optical and glass aging problem.
Application	Main Road	Subsidiary Road
Light Decay	3,000hrs 30%-35%	10,000hrs 5%-8%
Lifetime	5,000~15,000hrs	30,000~50,000hrs
Power Factor	0.63	0.65
Total Power Consumption	220W	83W
Total System Consumption	230W	93W
Diameter of Power Cable	2.5m 3PIN	1.5m 3PIN
Diameter of 500M Loop Power Cable	35m 4+1PIN	5 m 4+ 1PIN
Start	High voltage high currency start (3A), warm up time: 15~20 minutes	Low current start (0.6A), start time (0.06s), warm up is not needed

Cost Comparison

Item	200W HPS street light	75W LED street light
Watt(W)	200	75
Unit Price (USD)	180	500
5 year electricity cost	2363.47	946.03
5 year maintenance cost	200	0
Total cost	2743.47	1446.03

Dimension

JZSL-75

