

Apr-10-2009

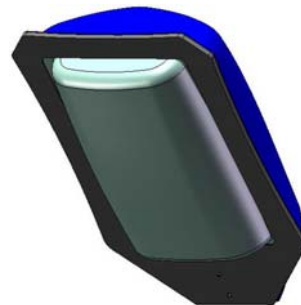
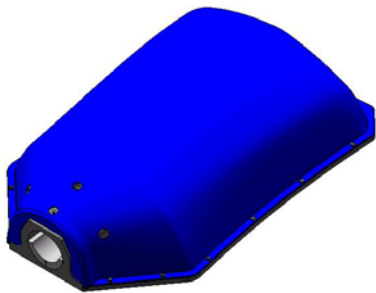
5000LM LED STREET LIGHT

PRODUCT SPEC.

MODEL NO. : LM9002-001G

ACBEL

5000 LM LED STREET LIGHT



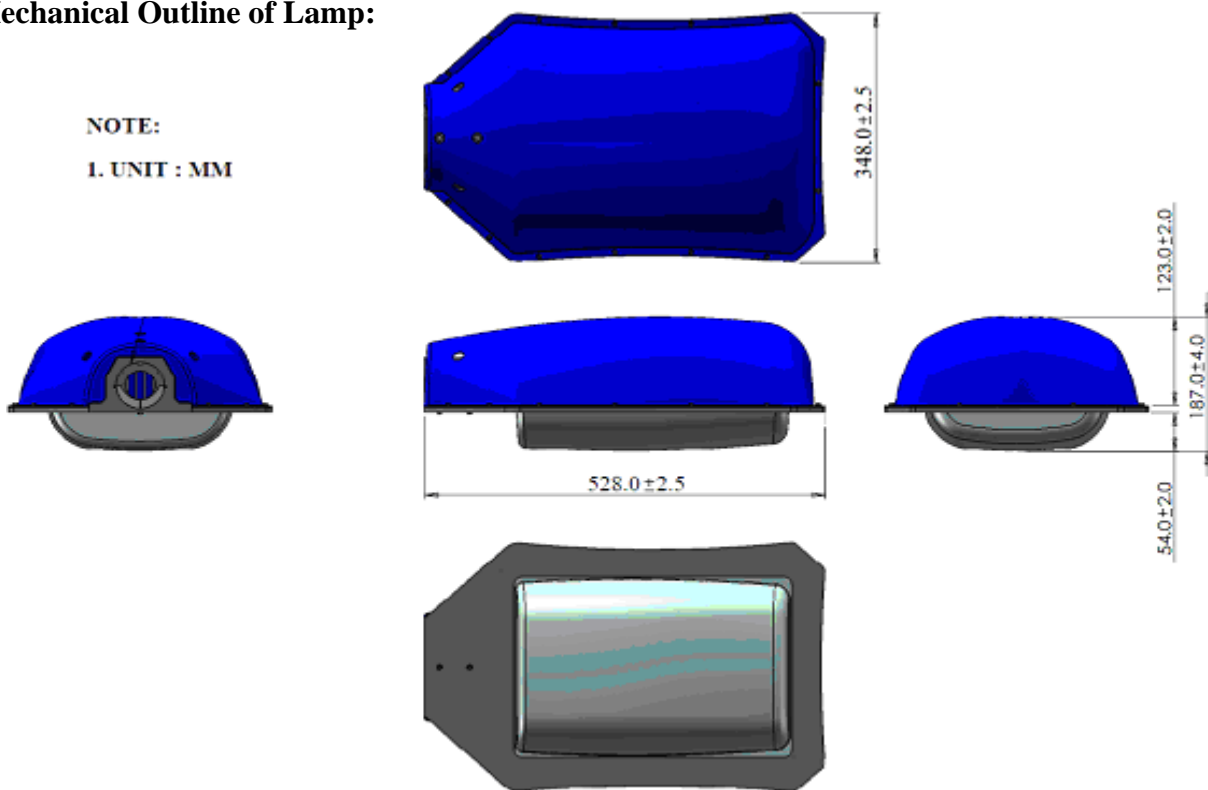
5000 LM LED ROADWAY LAMP SPEC

Model Name	5000LM LED STREET LIGHT
Model No.	LM9002-001G
Light Source	High Brightness LED Emitter

1-1 FEATURE

Material	Aluminum
Dimension	528.0(L) × 348.0(W) × 187.0 (H) mm
Weight (Not Include PSU)	8.6 kg

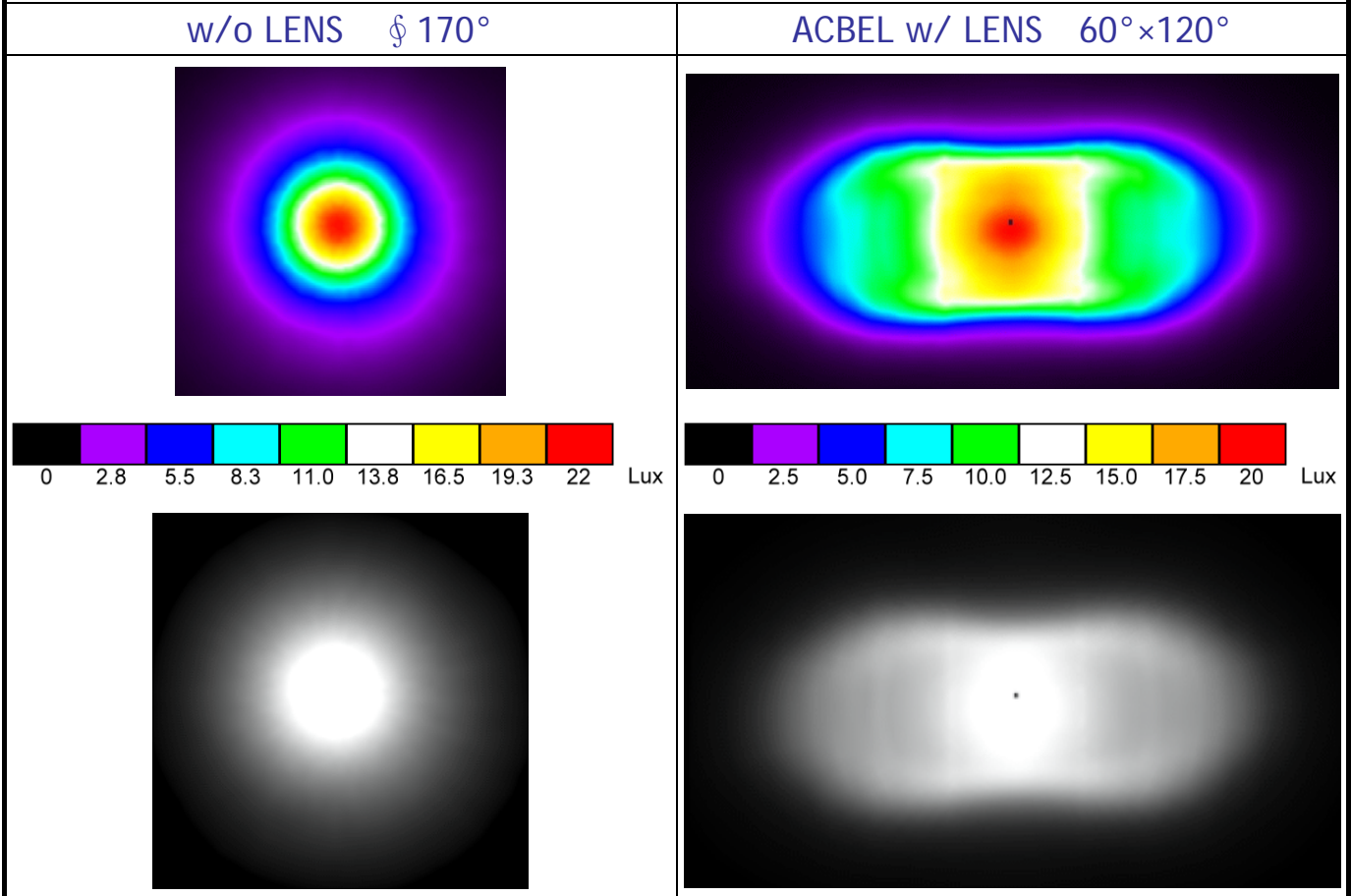
Mechanical Outline of Lamp:



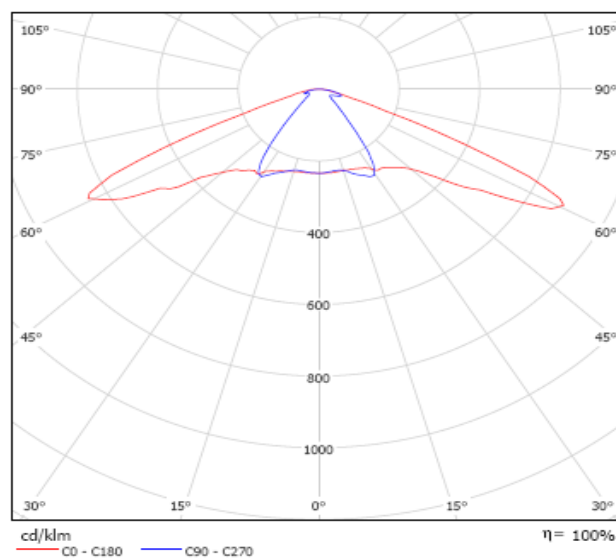
1-2 POWER REQUIREMENT	
LED Lamp Input Voltage (Typ.)	36Vdc (Max.38Vdc, Min.34Vdc)
LED Lamp Input Current (Typ.)	2.2 A
LED Lamp Input Power (Typ.)	79.6 W
Power consumption (Typ.)	86.0 W
1-3 LAMP FEATURE	
LED Lamp Initial Flux (Typ.)	6220 lm
Total Luminous Flux on Roadway (Typ.)	5200 lm (efficiency > 83%)
Equals to or Replaces	250 W HPS , 300 W Mercury
Color Temperature (CT)	5500K ~ 6500K (Cold White)
Color Rendering Index(CRI)	75 (Typ.)

1-4 OPTIC CHARACTERS & LIGHT PATTERN (LAMP)

Light Output: **5200LM** Illuminance Distribution on the ground - **8mHeight**

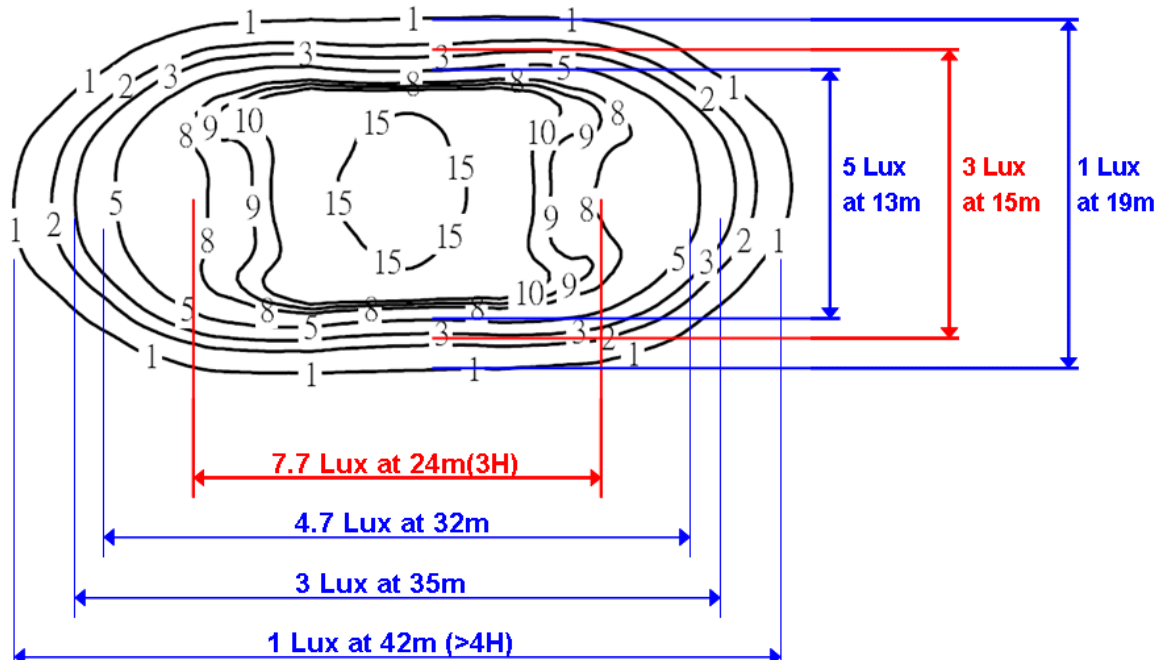


Polar Candela Distribution Plot



Optic Characters & Light Pattern (LAMP)

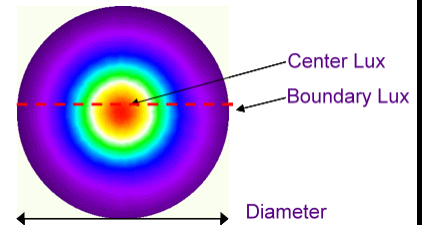
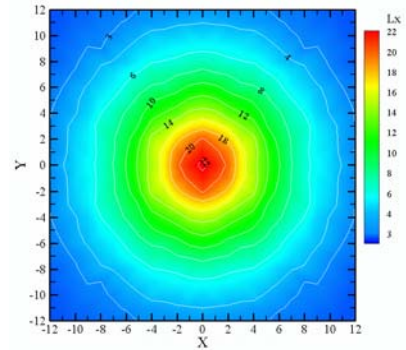
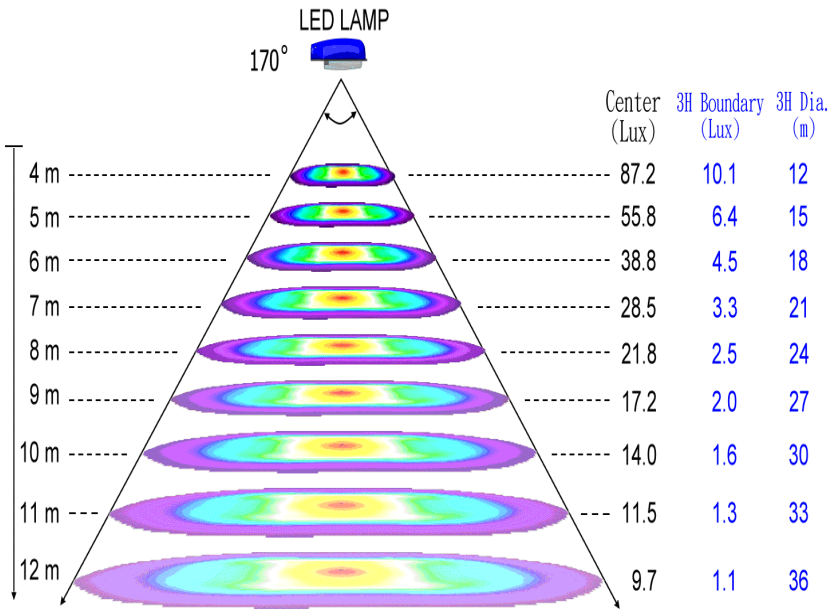
Light Output: **5200LM** Center Illuminance: **18.7Lux** Contour of Illuminance - **8m H**



Illuminance	w/o LENS § 170°		ACBEL w/ LENS 60°×120°	
	LED Lamp Height	Center LUX	Effective Area	Center LUX
4m	87.2	12m (φ)	74.6	8×16 m
5m	55.8	15m (φ)	47.8	10×20 m
6m	38.8	18m (φ)	33.2	12×24 m
7m	28.5	21m (φ)	24.4	14×28 m
8m	21.8	24m (φ)	18.7	16×32 m
9m	17.2	27m (φ)	14.7	18×36 m
10m	14.0	30m (φ)	11.9	20×40 m
11m	11.5	33m (φ)	9.9	22×44 m
12m	9.7	36m (φ)	8.3	24×48 m

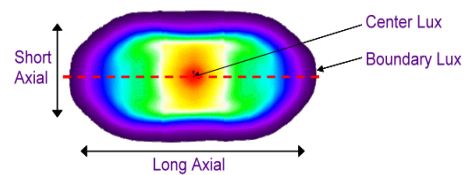
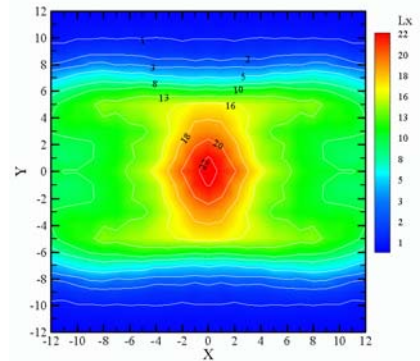
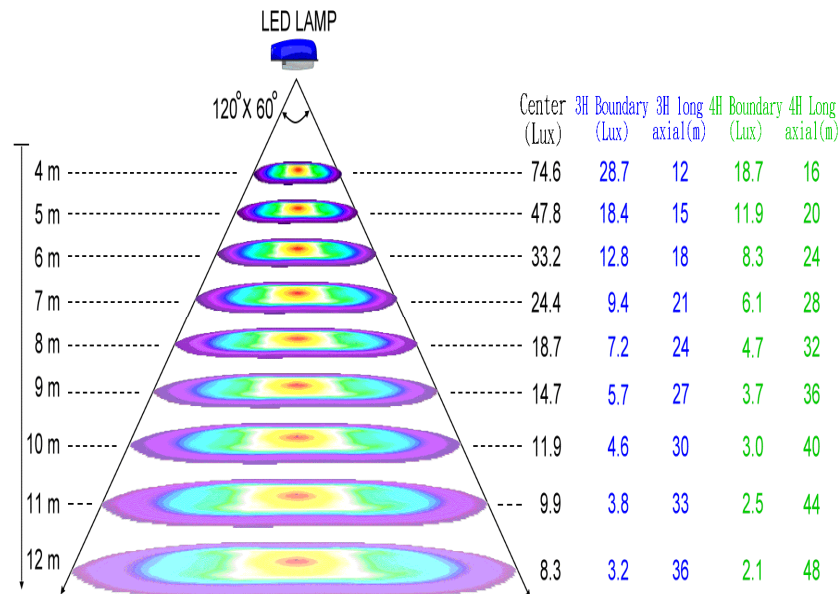
The Illuminance Chart (w/o LENS)

Effective Illuminance Area @ 8M Ht (24M ϕ)



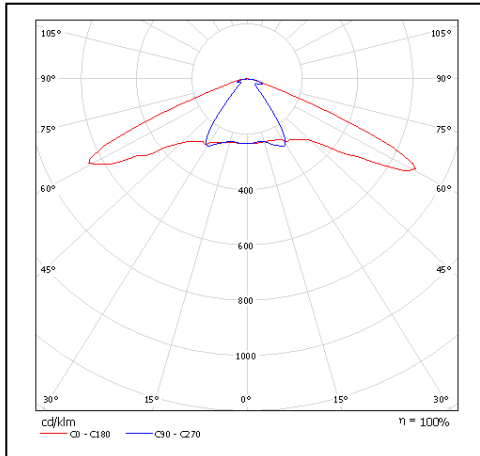
The Illuminance Chart (w/ LENS 60°x120°)

Effective Illuminance Area @ 8M Ht (X direction > 24M)

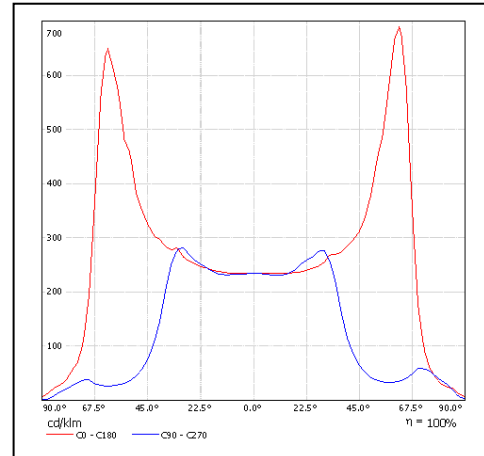


1-5 APPLICATION EXAMPLE

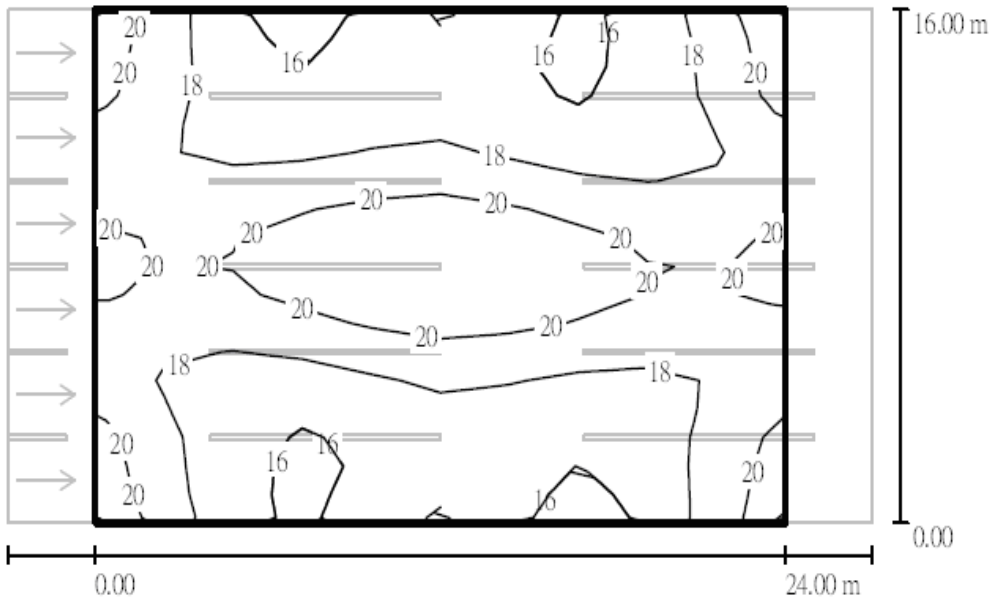
Polar Candela Distribution Plot



Rectangular Candela Distribution Plot



Contour of Illumination on Roadway



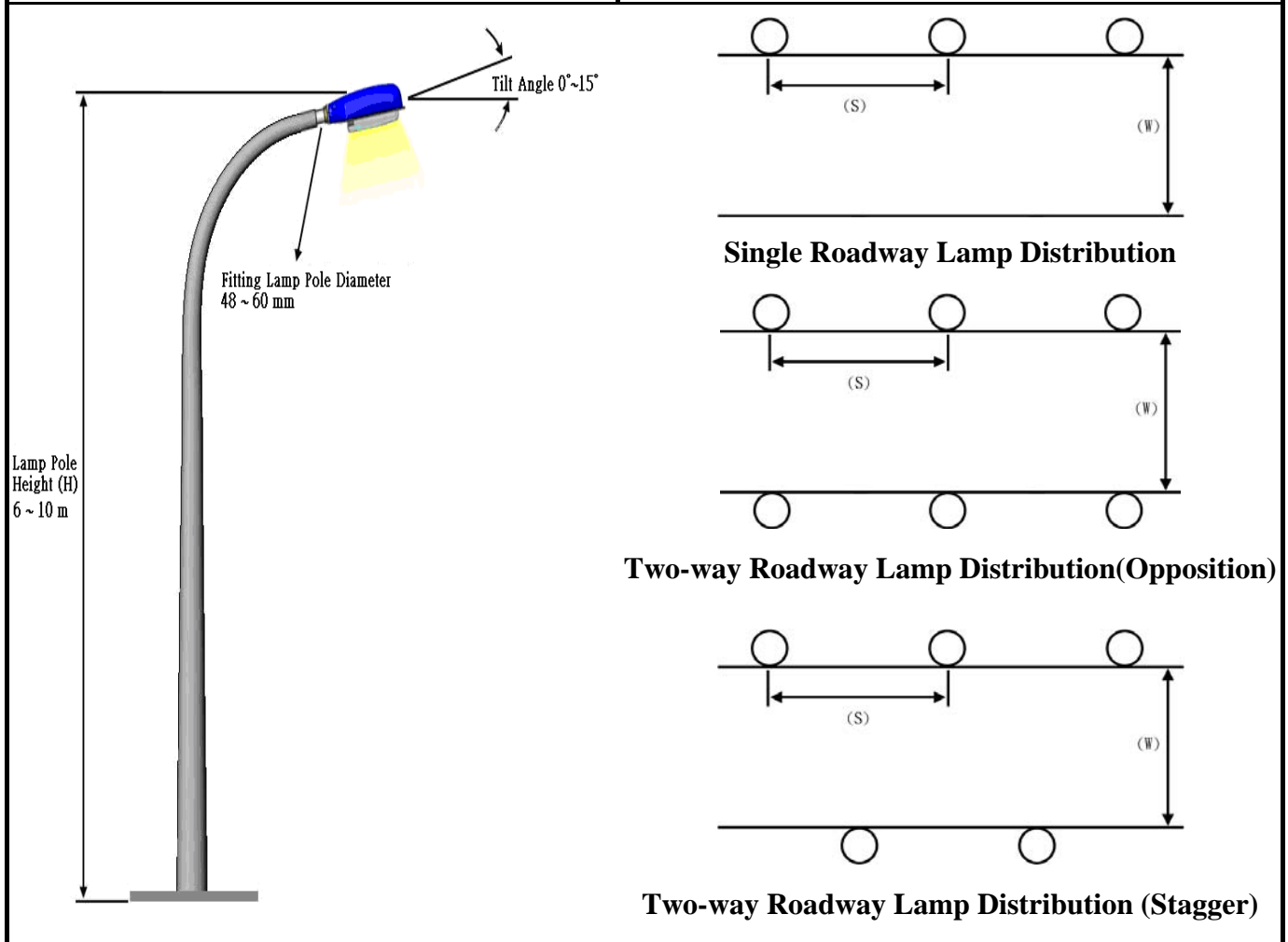
unit : Lux, ratio 1 : 250

grid : 10 x 18

Avg. [lx]	Min. [lx]	Max. [lx]	Min./Avg.	Min./Max.
18	15	22	0.82	0.69

1-6 APPLICATION CONDITIONS

Lamp Pole Height (H)	6 ~ 10 m
Distance between Lamp Poles (S)	24 m (3H at a height of 8m)
Tilt Angle ϕ	0°~15°
Fitting Lamp Pole Diameter	48 ~ 60 mm
Fitting Way	Distributing Road 、 Secondary Road
Roadway Width (W)	Single way 10 m ; Two-way 20 m



1-7 APPLICATION ENVIRONMENT

Working Temperature (Ambient)	-40°C ~ 50°C
Working Humidity	10%RH ~ 95%RH
Storage Temperature	-40°C ~ 80°C
Life Time	> 50,000 hrs @ 25°C ambient
IP Rating	IP66
Safety	CQC,BSMI,CE,TUV,UL

1-8 ACBEL PSU SPEC.

Model No.	GP9001
Power in Watts	100W
AC INPUT VOLTAGE	100V~240V
DC OUTPUT VOLTAGE (Typ.)	36V
DC OUTPUT CURRENT (Typ.)	2.7A