

Apr-10-2009

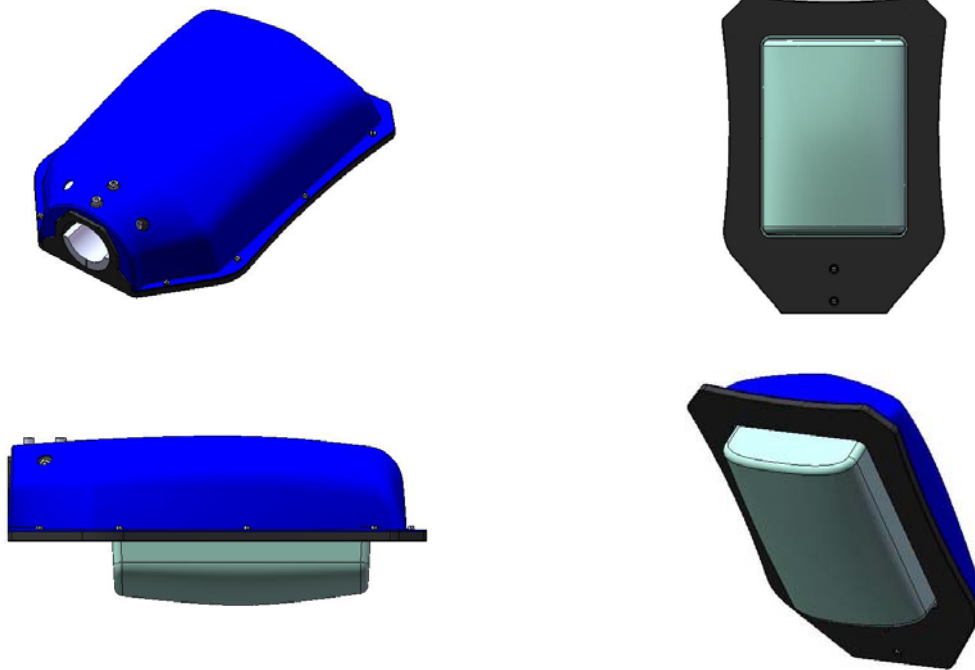
2300LM LED Street Light

PRODUCT SPEC.

Model No. : LM9001-001G

ACBEL

2300 LM LED Street Light



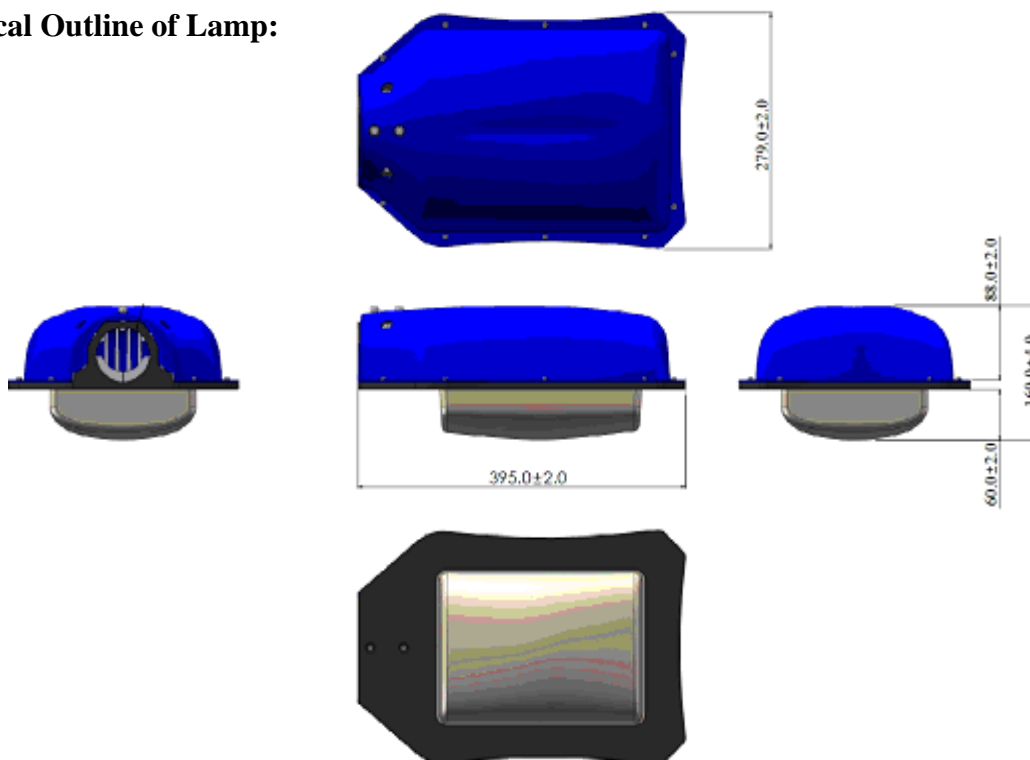
2300 LM LED STREET LIGHT SPEC

Model Name	2300LM LED Street Light
Model No.	LM9001-001G
Light Source	High Brightness LED Emitter

1-1 FEATURE

Material	Aluminum
Dimension	395.0(L) × 279.0(W) × 160.0 (H) mm
Weight (Not Include PSU)	5.7 kg

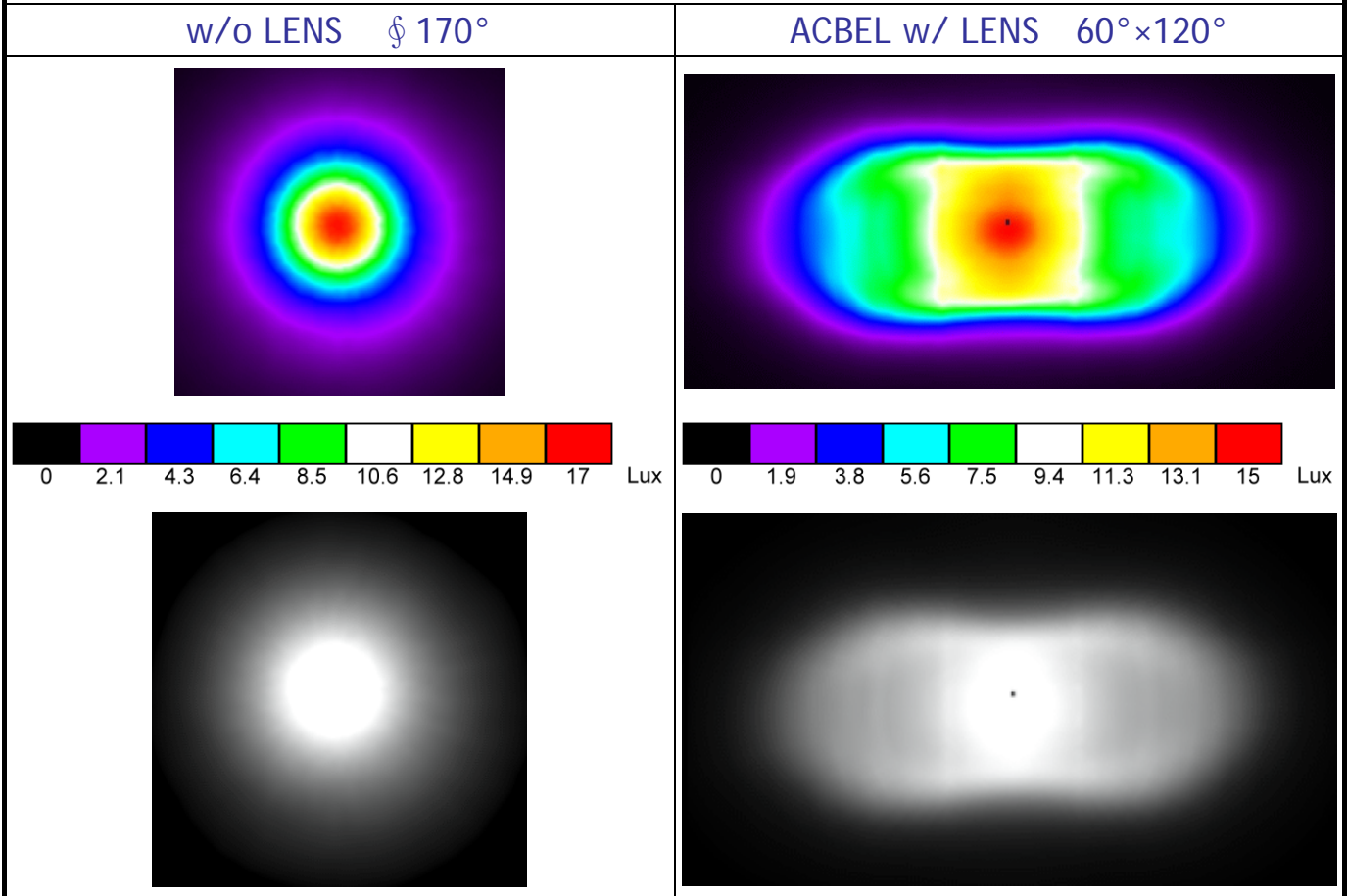
Mechanical Outline of Lamp:



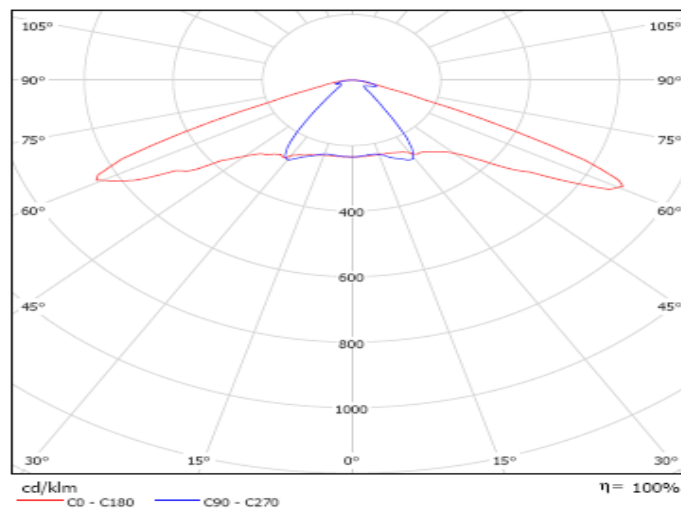
1-2 POWER REQUIREMENT	
LED Lamp Input Voltage (Typ.)	24Vdc (Max.25Vdc, Min.23Vdc)
LED Lamp Input Current (Typ.)	1.48 A
LED Lamp Input Power (Typ.)	35.4 W
Power consumption (Typ.)	41.0 W
1-3 LAMP FEATURE	
LED Lamp Initial Flux (Typ.)	2750 lm
Total Luminous Flux on Roadway (Typ.)	2300 lm (efficiency > 83%)
Equals to or Replaces	150 W HPS , 200 W Mercury
Color Temperature (CT)	5500K ~ 6500K (Cold White)
Color Rendering Index(CRI)	75 (Typ.)

1-4 Optic Characters & Light Pattern (LAMP)

Light Output: **2300LM** Illuminance Distribution on the ground - **6m Height**

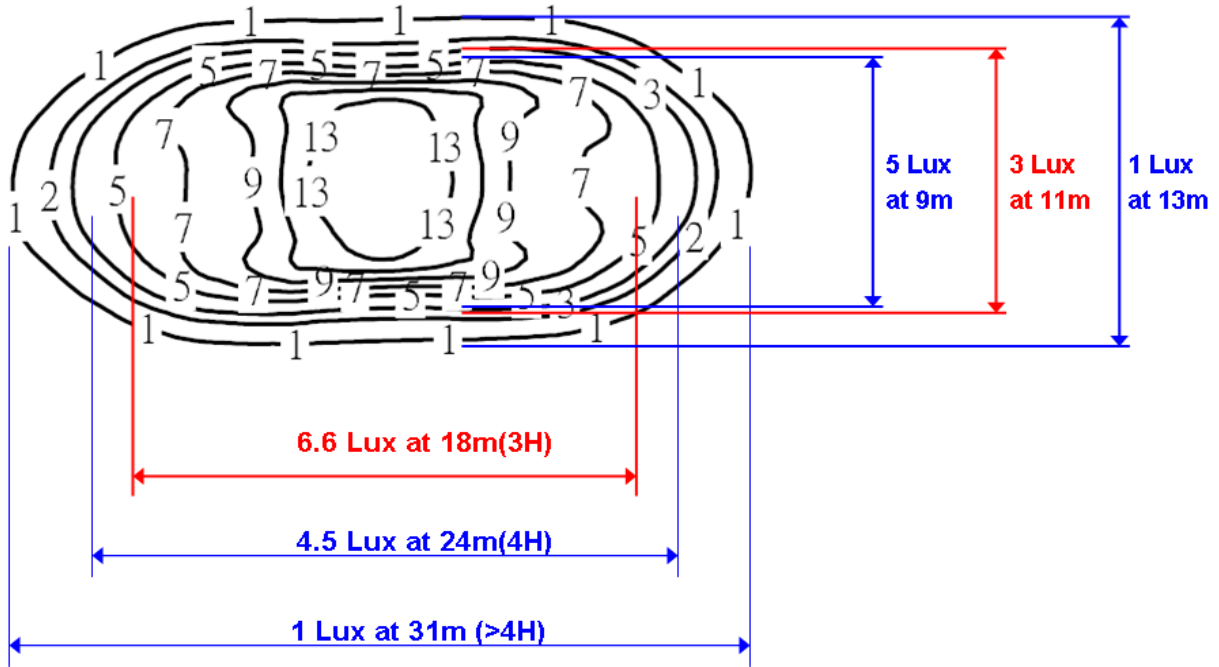


Polar Candela Distribution Plot



Optic Characters & Light Pattern (LAMP)

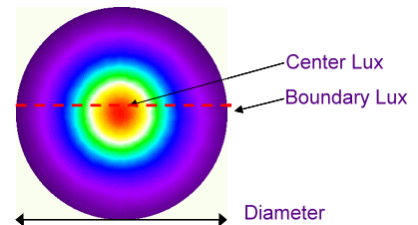
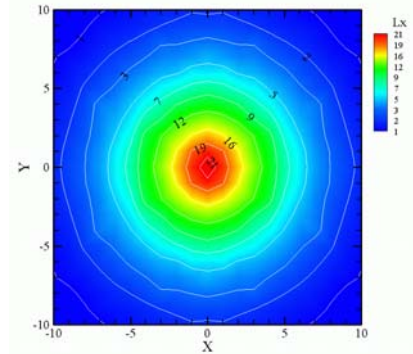
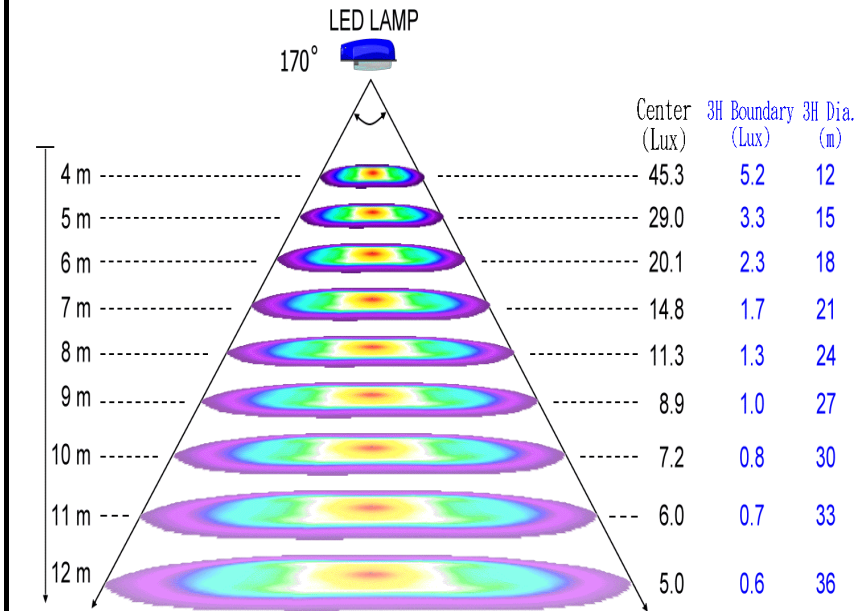
Light Output: **2300LM** Center Illuminance: **14.7 Lux** Contour of Illuminance - **6m Ht**



Illuminance	w/o LENS § 170°		ACBEL w/ LENS 60°×120°	
	Center(LUX)	Effective Area	Center(LUX)	Effective Area
LED Lamp Height				
4m	38.6	12m (φ)	33.0	6×12 m
5m	24.7	15m (φ)	21.1	7.5×15 m
6m	17.1	18m (φ)	14.7	9×18 m
7m	12.6	21m (φ)	10.8	10.5×21 m
8m	9.6	24m (φ)	8.3	12×24 m
9m	7.6	27m (φ)	6.5	13.5×27 m
10m	6.2	30m (φ)	5.3	15×30 m
11m	5.1	33m (φ)	4.4	16.5×33 m
12m	4.3	36m (φ)	3.7	18×36 m

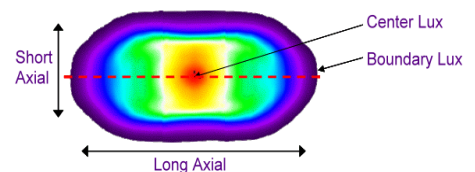
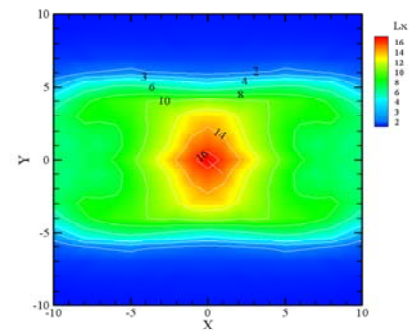
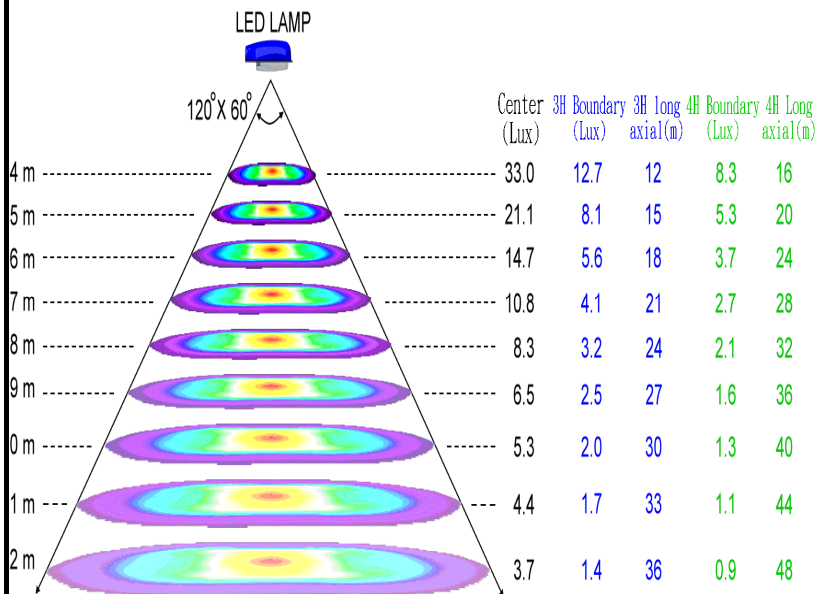
The Illuminance Chart (w/o LENS)

**Effective Illuminance Area @
6M ht (18M ϕ)**



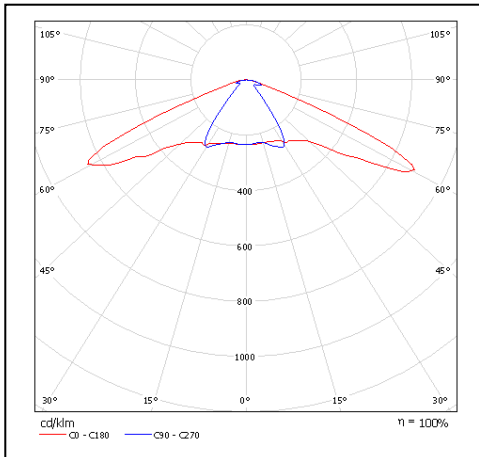
The Illuminance Chart (w/ LENS 60°x120°)

**Effective Illuminance Area @
6M ht
(X direction > 18M)**

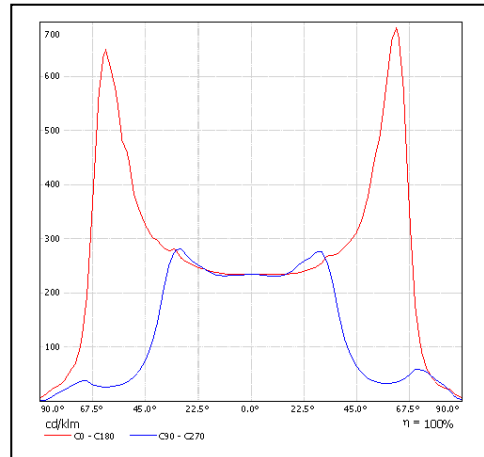


1-5 APPLICATION EXAMPLE

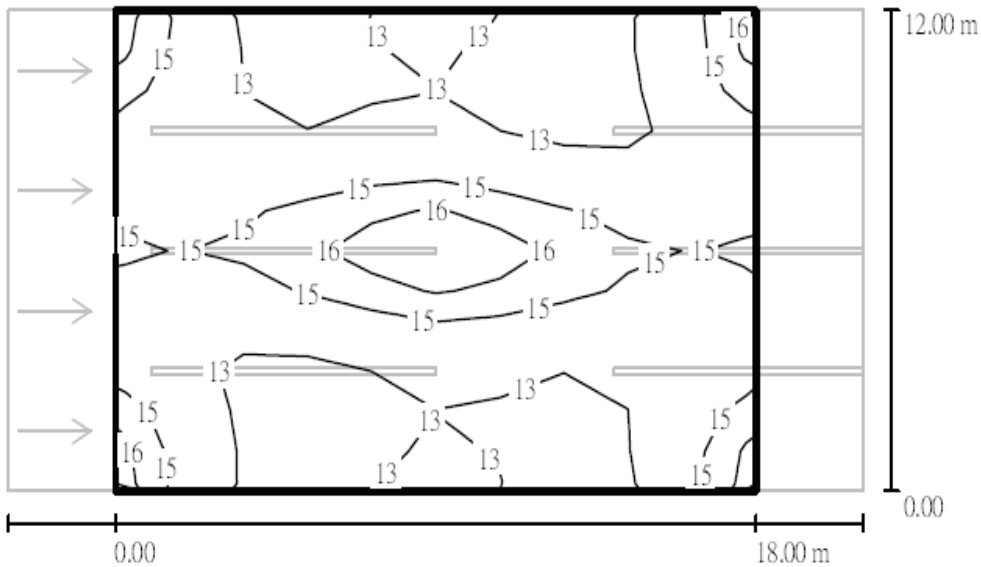
Polar Candela Distribution Plot



Rectangular Candela Distribution Plot



Contour of Illumination on Roadway



unit : Lux, ratio 1 : 200

grid : 10 x 12

Avg. [lx]
14

Min. [lx]
12

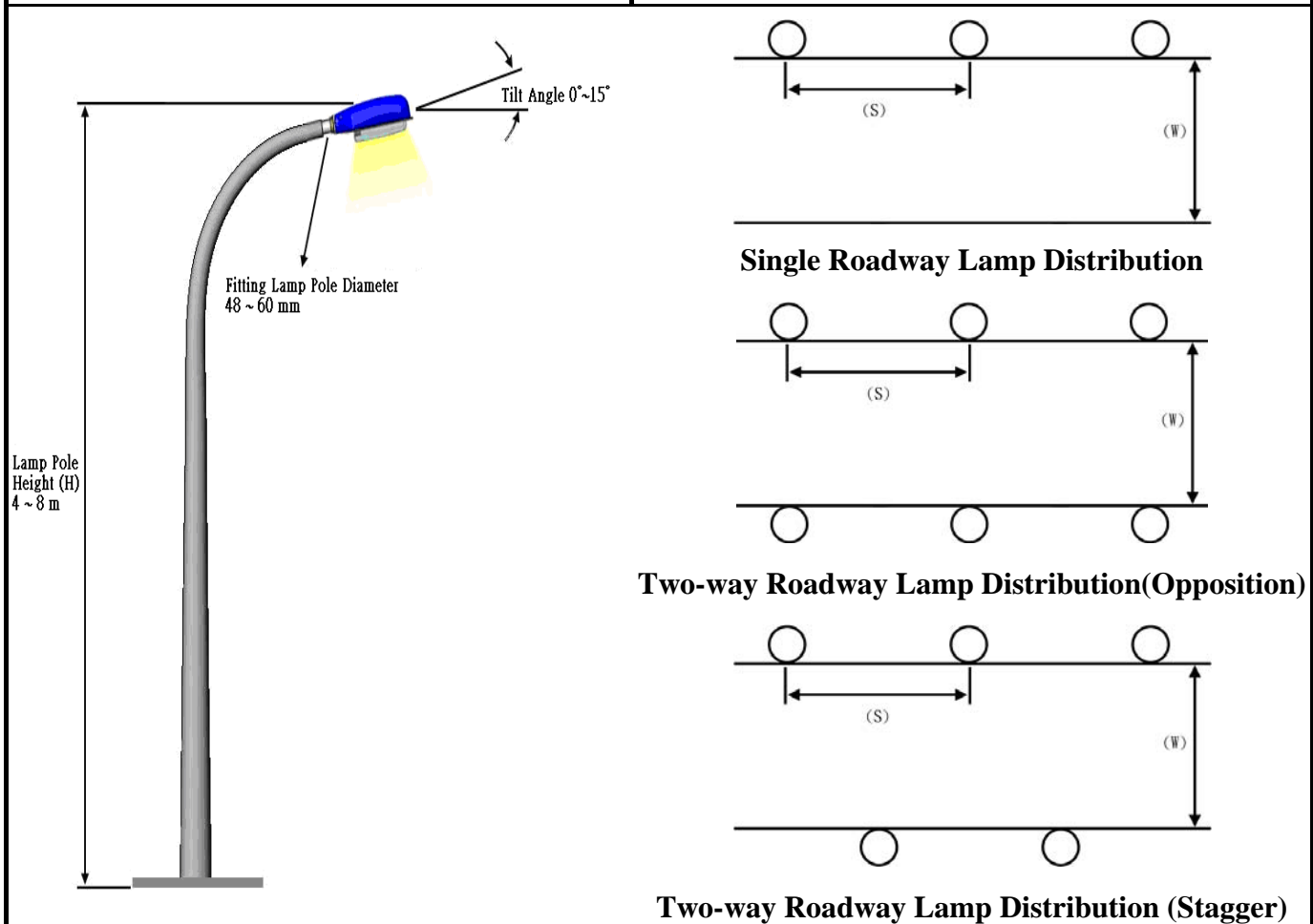
Max. [lx]
17

Min./Avg.
0.85

Min./Max.
0.71

1-6 APPLICATION CONDITIONS

Lamp Pole Height (H)	4 ~ 8 m
Distance between Lamp Poles (S)	18 m (3H at a height of 6m)
Tilt Angle ϕ	0°~15°
Fitting Lamp Pole Diameter	48 ~ 60 mm
Fitting Way	Lane · Distributing Road
Roadway Width (W)	Single way 8 m ; Two-way 16 m



1-7 APPLICATION ENVIRONMENT

Working Temperature (Ambient)	-40°C ~ 50°C
Working Humidity	10%RH ~ 95%RH
Storage Temperature	-40°C ~ 80°C
Working Life Time	> 50,000 hrs @ 25°C ambient
IP Rating	IP66
Safety	CQC,BSMI,CE,TUV,UL

1-8 ACBEL PSU SPEC.

Model No.	OT8031
Power in Watts	65W
AC Input Voltage	100V~240V
DC Output Voltage (Typ.)	24V
DC Output Current (Typ.)	2.7A