

# Cost-Less LED Lighting, Inc.



## WHY LED LIGHTING?

**A GREEN SOLUTION!!!**



**ENVIRONMENTALLY  
FRIENDLY!!!**

**PHONE: 206-979-0498  
FAX: 425-949-8436**

**[www.costlessledlighting.com](http://www.costlessledlighting.com)**

# BENEFITES OF OWNING LEDs:

1. Significantly reduces your monthly energy bills by 50% – 90!
2. Lower energy bills raise the not operating income (NOI) on your properties/business value by lowering your utility expenses!
3. LED light bulbs can save you over \$600per bulb on your electricity costs!
4. LED light bulbs Raise your property / business value by lowering your utility expense!
5. Experience ROI greater than 50% – 60% in the first year of using LED light Bulbs!
6. LED light bulbs operate for more than 50,000 – 75,000 hours! (The equivalent of 18 hours a for almost 11 years.)
7. LED light bulbs do not produce UV / PB Free or IR rays!
8. LED lights have no Mercury!
9. LED Lights have no Lead!
10. LED Light bulbs Reduces Maintenance Costs.
11. LED light bulbs are solar compatible
12. Uses your current fixtures



PHONE: 206-979-0498

FAX: 425-949-8436

[www.costlessledlighting.com](http://www.costlessledlighting.com)



# LED BULBS, LED TUBES , A LOOK AT LED SAVINGS PROVES TO BE ILLUMINATING FOR YOUR BUSINESS OR PROPERTY

As a general rule the actual energy cost of lighting, using as LED bulb vs. an incandescent bulb producing the same light, is 85 to 90% less with the LED bulbs. If your business uses, for example, 1,000 60-watt bulbs 11 hours a day 365 days a year assuming a \$0.14 per kWh cost, a single incandescent bulb would cost \$33.63 per year to keep lit, excluding the cost of labor to change it every 1,000 hours of use. An LED 7 watt bulb would offer comparable lighting for the \$3.93 for the year. Thus 1000 incandescent bulbs would cost #33,600.00 in just electricity in the a year vs. only\$3,939.00 for LED bulbs. Comparable savings would occur with LED Tubes, L ED Street lights, LED Floors, basically an kind of LED lights.

The above figures show that, excluding the cost of the bulbs and the labor to change them, a company running 1000 incandescent bulbs currently, as described above, could save a whopping \$29,700 in electricity per year by switching completely to LED all at once. During the course of the year in the example above, each incandescent bulb will be used 4,015 hours and thus example above, each incandescent bulb will be used 4,015 hours and thus must be change four times. Some bulbs are harder to change than others but on average it seems safe to set a time frame of 10 minutes by the time an employee gets a bulb and a ladder if necessary and makes the lighting change. So changing a bulb four times a year would cost plus or minus 40 minutes in employee time or two thirds of one man hour or \$8 if you are paying \$12 an hour or \$12 paying \$18.

PHONE: 206-979-0498

FAX: 425-949-8436

[www.costlessledlighting.com](http://www.costlessledlighting.com)



# LED BULBS, LED TUBES , A LOOK AT LED SAVINGS PROVES TO BE ILLUMINATING FOR YOUR BUSINESS OR PROPERTY

Page 1 of 2

A decent 1000 hour incandescent bulb can be purchased for about \$1, much less than an LED bulb. Using 4 bulbs a year will then be only \$4. So your full cost per lighting fixture socket per year for 4 incandescent bulbs, plus electricity, plus changing them out, would be about \$33.63 for electricity, \$8 for labor, and \$4 cost of bulbs, or \$45.63. Your cost for two years would be over \$90; for three years around \$135 without adjusting for increases in the cost of electricity.

Changing out 1,000 incandescent bulbs all at once to LED bulbs will cost roughly \$50,000. Ouch! But, you get back most of that the first year in energy savings from your electric bill! By the end of year two you have saved almost \$60,000 in electricity alone. Maintenance costs are down plus or minus \$10,000 depending on what you pay per hour, you buy no bulbs year two, which is another \$4,000 you save. Your maintenance people have taken hundreds of fewer trips up and down ladders, you are reducing your carbon footprint significantly, you are a part of the solution. By year three there is nothing but an ongoing \$45,630 minus \$3,930 or \$41,700 in savings every year other than the additional savings you now enjoy every time your electricity costs go up, which in year three might well exceed what you are now spending per year on total lighting costs!

If you run shifts or for any reason must operate with "lights on" 24/7, your ROI on adding LED Bulbs is a "no brainer" year one. By year two your savings could easily exceed \$100k in the above scenario. Plug your stats into our handy, dandy [savings calculator](#) and see the kind of savings you can enjoy now, and then give us a call.

PHONE: 206-979-0498

FAX: 425-949-8436

[www.costlessledlighting.com](http://www.costlessledlighting.com)



# Lights, LED Light Bulbs, LED Tubes can Save your Business big Dollars

LED Lights, LED Light Bulbs, LED Tubes can Save your Business big Dollars and offer many ongoing advantages! These days anything that will save your business a few dollars looks good right? If it will save you quite a few dollars it looks even better still, right? LED lights, led light bulbs, led tubes and led street lights will all save appropriate businesses lots of money over time but might require a small investment up front in order to initiate the savings. Oh! Investment! Upfront! That might be a problem!

LED lights, led light bulbs, led tubes and led street lights will all save appropriate businesses lots of money and further allow them to reduce their energy footprint to a veritable "big toe" worth of footprint instead of the entire foot. Still even a small upfront additional expenditure may be enough to delay or eliminate the prospect altogether for many marginally profitable businesses in today's tough economic environment it seems.

At Standard LED we see this entire situation more as an educational challenge than an environmental or product sales challenge. When we get an opportunity to actually explain the full advantages of LED lighting we seldom lose a sale. The real difficulty comes from the lack of full information which can be easily found regarding the actual savings and other advantages of using led lights, led light bulbs, led tubes and led street lights rather than older less environmentally friendly products.

So please explore [www.ledlightsledlightbulbs.com](http://www.ledlightsledlightbulbs.com) and get educated. A fully educated consumer makes your decision about the purchase of led lights, led light bulbs, led tubes and led street lights a simple "no brainer" decision rather than a board level, debate required, issue. Hey, if its good for your business, good for the environment, good for the country and will continually save you money, let's face it, it might be a good thing.

PHONE: 206-979-0498

FAX: 425-949-8436

[www.costlessledlighting.com](http://www.costlessledlighting.com)



# MORE CITIES TAP STIMULUS PACKAGE FOR LED STREET LIGHTS

## Page 1 of 2

### More cities tap stimulus package for LED streetlights

By Judy Keen, USA TODAY. March 3, 2009

Cities across the USA are making their streetlights brighter and greener by switching to LEDs.

Light-emitting diodes produce light when exposed to an electrical charge. They cost more than traditional lights, but last longer because they don't have filaments and use less electricity.

Several cities, including Ann Arbor, Mich., and Anchorage, have installed LED streetlights, and dozens more are planning conversions. At least 30 cities have asked for more than \$104 million in federal stimulus funds to help them make the change.

Pittsburgh's City Council votes Wednesday on a bid deadline for test LEDs for its five-year, \$25 million plan to replace 40,000 streetlights.

Councilman William Peduto, a Democrat, says the city could cut its \$4 million annual tab for power and repairs. "Our goal is to become one of the leaders in a full transformation to LED technology," he says.

San Jose will convert 100 lights this spring and is seeking \$20 million in stimulus money for up to 25,000 more. City Transportation director Jim Helmer hopes to change all 62,000 streetlights by 2022.

Besides cutting the \$4 million annual electric bill for streetlights, San Jose's LEDs will have transmitters and receivers so they can alert the city when maintenance is needed. They can be dimmed overnight, brightened when pedestrians are near and flash to guide first responders.

PHONE: 206-979-0498

FAX: 425-949-8436

[www.costlessledlighting.com](http://www.costlessledlighting.com)



# MORE CITIES TAP STIMULUS PACKAGE FOR LED STREET LIGHTS

## Page 2 of 2

Solar panels could power them, Helmer says, so higher costs — about \$1,000 for an LED streetlight compared to \$250 for a traditional one — can be quickly offset and excess energy fed back into the power grid.

"City budgets are being squeezed ... and 50% energy savings is significant," says Christopher Ruud of Beta LED, a Racine, Wis., company that works with cities on LED projects.

Elsewhere:

- If Milwaukee gets \$14 million in stimulus funds it's seeking for the project, it will replace 6,700 of its 67,709 streetlights with LEDs, says Bob Bryson, chief street-lighting engineer.
- Missouri City, Texas, wants to convert 75% of its 31,000 streetlights to LEDs. Public Works director Scott Elmer says electricity for each would be about \$7.50 a month, compared with \$14.77 for incandescent lamps.
- Urbana, Ill., is testing LED streetlights. Public works director Bill Gray says their lifespan is about 14 years, compared with two years for current lights. "We need to be sold on the ... uniformity of the light," he says.

Glendale, Ariz., isn't using LED streetlights, but it's the first U.S. city with an automatic system that monitors 19,270 streetlights and alerts the city when one is out. Transportation director Jamsheed Mehta says the result is "significant savings" in fuel and emissions.

PHONE: 206-979-0498

FAX: 425-949-8436

[www.costlessledlighting.com](http://www.costlessledlighting.com)



## FAQs

Installing LEDs at your properties that consume a large amount of energy makes financial and environmental sense. LEDs pencil out!

See some of the most frequently asked questions below.

Page 1 of 3

**Q: What are LEDs?**

**A:** LED stands for Light-Emitting Diodes. LED is solid state lighting. This means that there is no glass bulb, no filament that is encased by glass in a vacuum. With an incandescent bulb heat is the main element while light is the by-product. LEDs have a circuit board and a computer chip. The chip creates light that is generated and focused through a plastic diode to create light.

**Q: Do LED lights screw into standard household and commercial light sockets?**

**A:** Yes. LEDs that have a base called E27 or E26 screw directly into your current sockets. There is no need to replace your electrical system to use LED lights. The “E” stands for “Edison” and the 27 refers to the bulbs base being 27mm in diameter.

**A:** Lumens are the amount of light emitted from a light source. A typical 100 watt incandescent bulb emits about 1,400 lumens. But this light is spread over a larger area, typically 270 degrees of beam area. LED’s light is focused in a specific area, between 45 and 180 degrees of beam area depending on the bulb. So an LED with 750 lumens with light focused on 120 degrees of an area is a much more focused and effective use of light.

**Q: What is the difference between high powered LEDs that Standard-LED offers and low powered LEDs that your competitors sell?**

**A:** There is a tremendous difference between low power and high powered LEDs. LEDs are run off of a circuit board and each LED has a chip attached to it. High powered LEDs use the best chips. These chips are 2 times more efficient and offer significantly brighter light than low powered LEDs.

**PHONE: 206-979-0498**

**FAX: 425-949-8436**

**[www.costlessledlighting.com](http://www.costlessledlighting.com)**





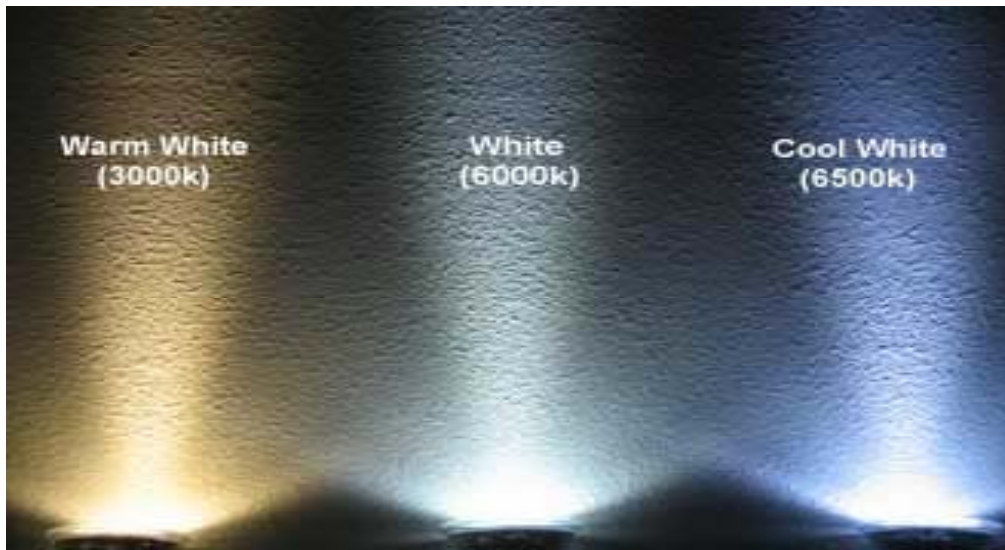
# FAQs

See some of the most frequently asked questions below.

Page 1 of 3

**Q: What are the color temperature differences?**

**A:**



**Q: Do you charge for shipping in the United States?**

**A: Yes**

**Q: Do you charge for shipping outside of the United States?**

**A: Yes.** Shipments outside of the US will incur a flat \$250 fee. Some countries inside Africa and western Asia may incur an additional fee. However, we will work diligently to keep all shipping prices at \$250 if they are outside the US.

**Q: Which one of your lights is best suited for a recessed fixture that has a single bulb in it?**

**A: The PAR30 is the best option for you, especially if you are looking to light an area brightly. The PAR38 is another fine option for recessed lighting. If you chose to use the PAR38 for recessed lighting you will be best served to purchase a socket extender for the light. These extenders screw onto the base of the light and into the socket. They are inexpensive and can be purchased in the lighting section of your local hardware store.**

**PHONE: 206-979-0498**

**FAX: 425-949-8436**

**[www.costlessledlighting.com](http://www.costlessledlighting.com)**



# FAQs

Page 1 of 3

**Q: What are the advantages of LEDs vs. incandescent and fluorescent lights?**

**A:** 1) LEDs use up to 90% less energy.

2) Saves you tremendous amounts of money.

3) Last up to 50,000 hours. No need for constant bulb replacement.

4) Does not contain mercury or selenium.

5) Last 10X longer than a fluorescent (CFL or CF) and 50X longer than incandescent.

6) Can be disposed of safely.

**Q: How are returns handled?**

**A:** We do not accept returns on our large bulk purchases. We encourage you to purchase one of our test packages if you are unfamiliar with LEDs. You can customize the test packages to fit your specific needs if you like. Please refer to our test packages page.

**Q: Do LEDs work on dimmer switches?**

**A:** No. Some types of LEDs do work on dimmer switches but the current technology is not ready for these types of LEDs to be brought to the mass market. The dimmer switch wastes a tremendous amount of energy and will cause your LED to glow or flicker when they are turned off.

**Q: Do LED lights turn on immediately compared to fluorescent lights that take time to warm-up?**

**A:** Yes, LEDs turn on immediately. You do not need to wait for LEDs like you do with fluorescents.

**Q: Who is using LED lighting?**

**A:** Everyone is using LEDs! Architects, contractors, developers, REITs, property managers, factories, business owners, and homeowners. Whenever you want to save money on your energy bill you should use LED lighting; especially if you have lighting on for a long period of time each day.

**LEDs can save you over \$500 per bulb!**

**PHONE: 206-979-0498**

**FAX: 425-949-8436**

**[www.costlessledlighting.com](http://www.costlessledlighting.com)**



# Photo of jobs With LED Tub Lighting



**DIP LED TUB LIGHT BULB  
#LPAL/4/T8/DIP NW  
Replace: 32 Watt Fluorescent  
& Remove Ballast**

**PHONE: 206-979-0498**

**FAX: 425-949-8436**

**[www.costlessledlighting.com](http://www.costlessledlighting.com)**



# Photo of jobs With A Lamp/ PAR 30 Lighting

DIP LED LIGHT BULB  
#LPAL/7/E27/DIP/WW  
A LAMP BULB  
Replace: 65 Watt Incandescent



DIP LED LIGHT BULB  
#LPAL/7/PAR30/DIP WW  
Replace: 65 Watt Incandescent



HI-POWER  
LIGHT BULB  
#HPSL/5/WW  
A LAMP BULB  
Replace: 60 Watt  
Incandescent

PHONE: 206-979-0498

FAX: 425-949-8436

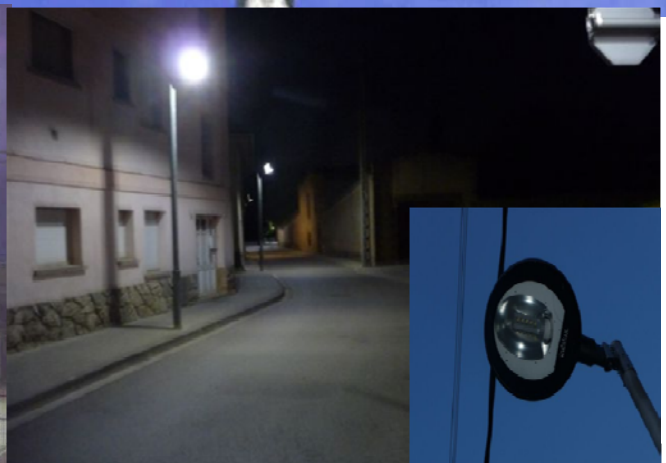
[www.costlessledlighting.com](http://www.costlessledlighting.com)



# Photo of jobs With LED Street Lighting



**LED STREET LIGHT BULB**  
#HPRL/28/E40/NW  
Replace: 6 ea.  
200 Watt HPS



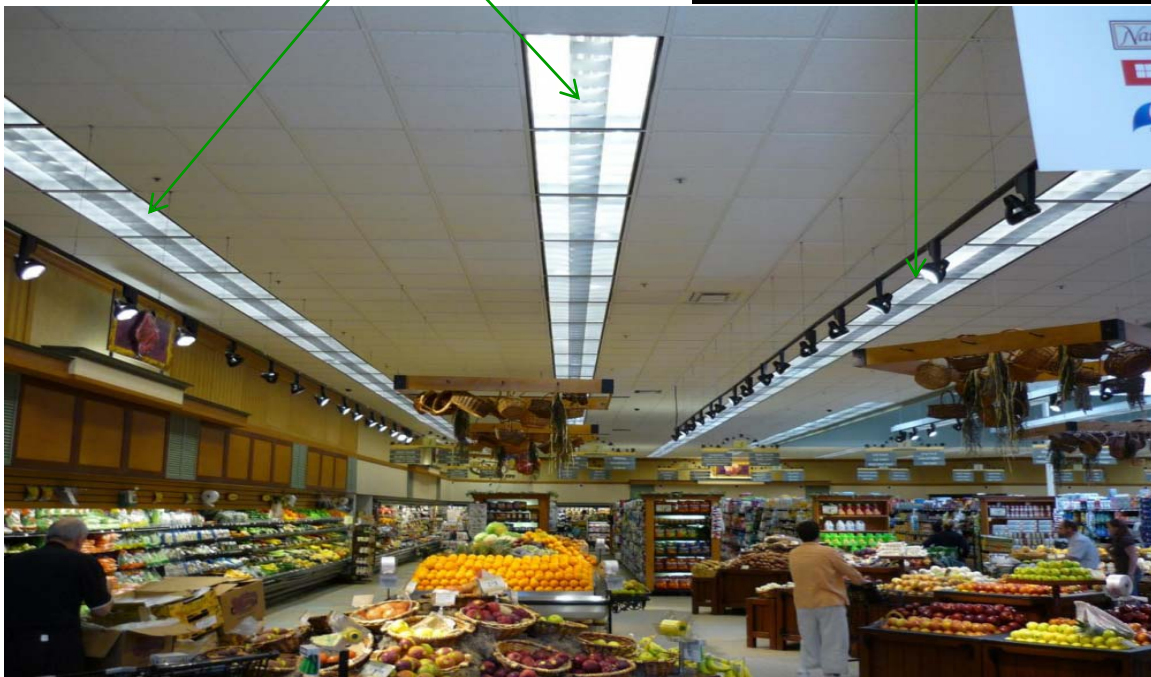
PHONE: 206-979-0498  
FAX: 425-949-8436  
[www.costlessledlighting.com](http://www.costlessledlighting.com)



# Photo of jobs With LED Tub/ PAR 20 Lighting

LED TUBE LIGHT BULBS  
#LPTL/4/T8/DIP/NW  
Replace: 32 Watt Fluorescent

HI-POWER LIGHT BULBS  
#HPSL/6/PAR/D30/NW  
Replace: 65 Watt Incandescent



**Note: We use all the exiting fixtures and remove all BALLASTS and made the store ENVIRONMENTALLY FRIENDLY!!**

This grocery store has its lights on for roughly 18 hours a day! LEDs would be well served in this environment. Especially in the fruit and produce sections. LEDs do not give off UV rays, therefore produce would have a longer shelf life!

PHONE: 206-979-0498

FAX: 425-949-8436

[www.costlessledlighting.com](http://www.costlessledlighting.com)



# Photo of jobs With LED PAR30 Lighting



SMD LED LIGHT BULB  
#LPAL/8/PAR30/SMD WW  
Replace :75 Watts Halogen



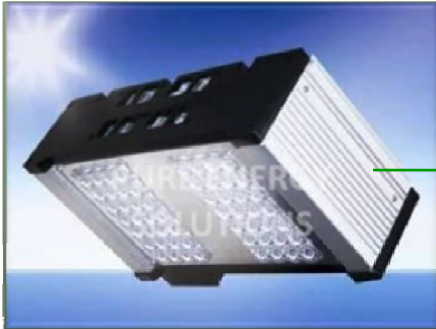
PHONE: 206-979-0498

FAX: 425-949-8436

[www.costlessledlighting.com](http://www.costlessledlighting.com)



# Photo of jobs With LED Tunnel / Canopy Lighting



**LED TUNNEL LIGHT BULB**  
#HPCL/50/CORD/NW  
Replace : 300 Watt HPS Bulb



**LED CANOPY LIGHT BULB**  
#HPCL/50/CORD/NW  
Replace : 200 Watt HPS Bulb

PHONE: 206-979-0498  
FAX: 425-949-8436  
[www.costlessledlighting.com](http://www.costlessledlighting.com)

