



# 150W LED Street Light

Part No. : **ESL-C01H150W-06A**



## Features

- High Efficient Built-in Power Supply
- Special Cooling System with Fan

## Application

Recommend Installation Height: 8 ~ 10 meters

- Main Street Lighting
- Park/Garden Lighting
- Parking Lot Lighting
- Residential Illumination
- Bridge Lighting

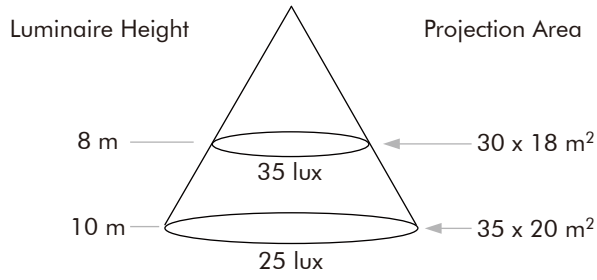
## Typical Specification at $T_A = 25^\circ\text{C}$

Description		150W LED Street Light
Part No.		ESL-C01H150W-06A
Luminaire Flux		9500 ~ 11500 Lm
Correlated Color Temperature (CCT) <sup>[1]</sup>		5000 ~ 6500 K
Color Rendering Index (CRI)		≥ 70 (Typ.)
Center Illumination	H = 8 m	35 Lux
	H = 10 m	25 Lux
Input Voltage (AC) <sup>[2]</sup>		100 V ~ 240 V
Power Frequency Range		50 Hz ~ 60 Hz
LED Power Consumption		145 W
System Power Consumption		160 W
Power Factor (PF)		> 0.9
Total Harmonic Distortion (THD)		< 20%
Operating Temperature Range		-20°C ~ +50°C (-4 °F ~ +122 °F)
Operating Humidity Range		10 % ~ 93 % RH
Working Life of LED		≥ 50,000 Hrs
IP Classification of Light Engine and Power supply		IP 65
Power Pole size (Diameter)		50 ~ 65 mm
Dimensions		630 x 350 x 170 (mm)
Weight		< 8 Kg

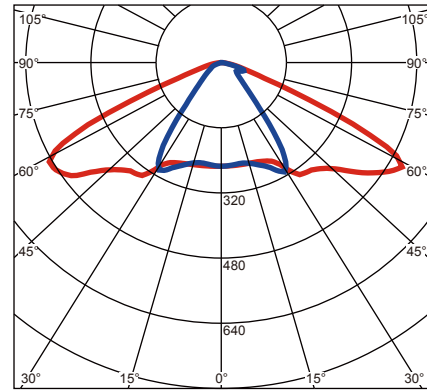
Note : [1] If customers need special specifications for the above items, please contact with our salesman.

Note : [2] It is recommended to use the typical input voltage to drive LED street light. The unsuitable input voltage will damage the LED street light or reduce the life of product.

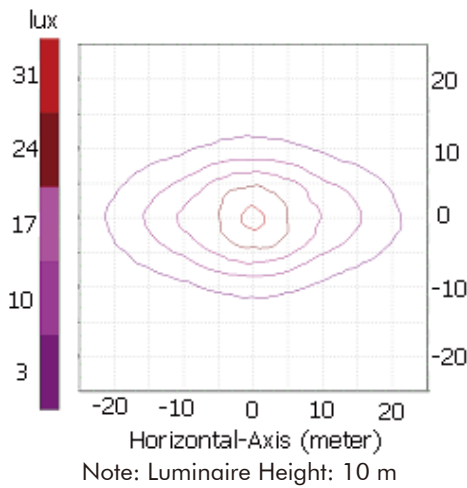
Installation Height and Illumination Distribution



Beam Pattern



Isotropic Illumination Distribution



Lighting Simulation on Main Street

- Simulation Condition:
1. Luminaries Height: 10 m
  2. Distance Between Two Poles: 30 m
  3. Luminaries Flux: 10,000 lm

