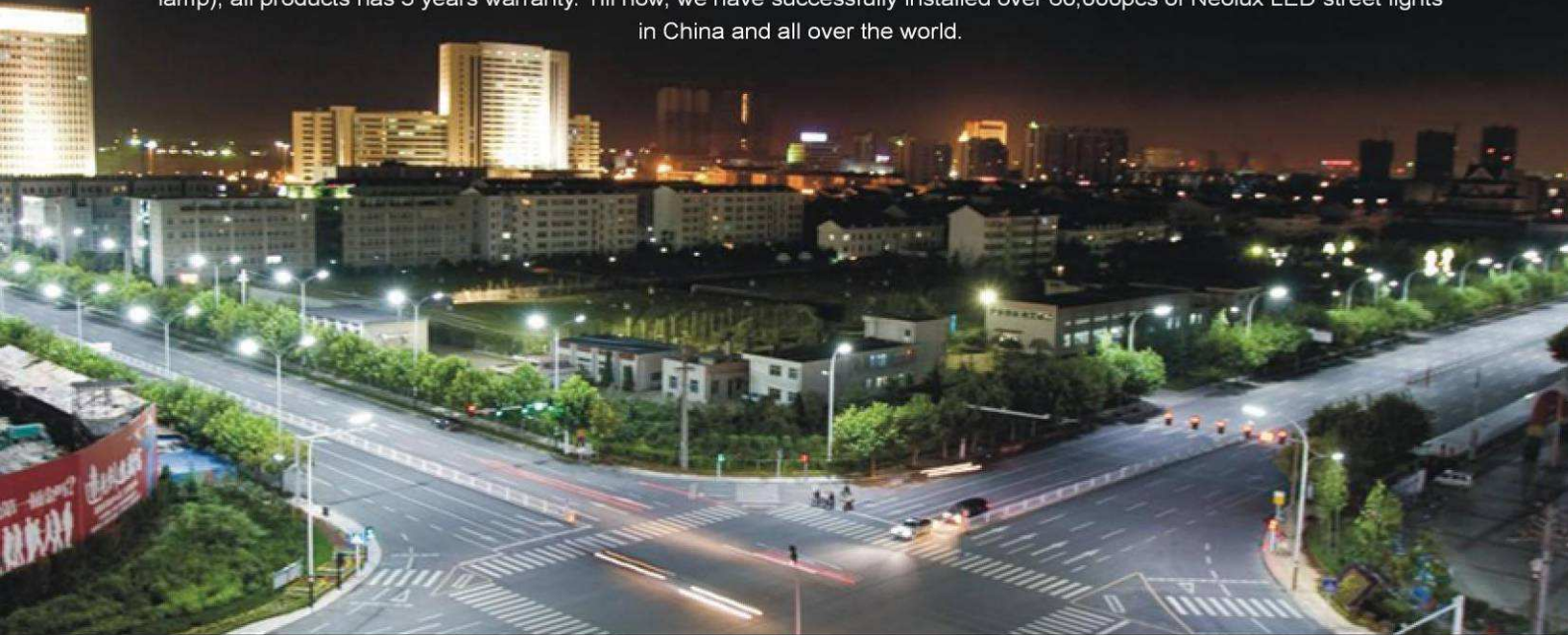




NEOLUX, GLOBAL LEADER IN LED LIGHTINGS
国智新能源，全球领先的LED白光照明专家

NEOLUX LED STREET LIGHT SERIES

At Neolux, you can easily choose the LED high power street lights to replace the conventinoal HPSV(high pressure sodium lamp), all products has 3 years warranty. Till now, we have successfully installed over 60,000pcs of Neolux LED street lights in China and all over the world.



Neolux LED Street light-Build in



Neolux LED street light-retrofit



LED street light projects



LED street light VS conventional street light



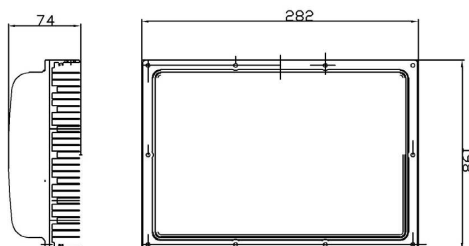
Left is 250w high pressure sodium lamp, Right is 60w LED lamp.Electricity saved more than 70%.



NEOLUX LED LIGHTS-RETROFIT SERIES



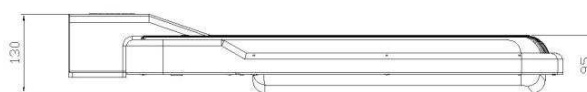
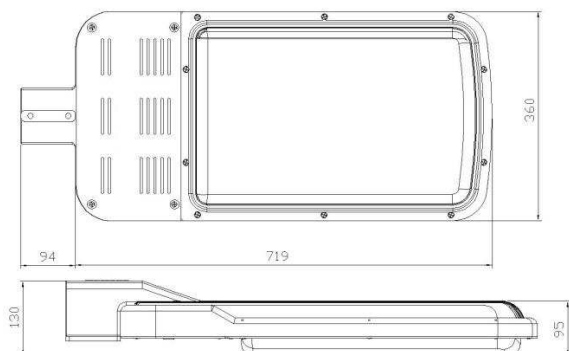
The retrofit street light is formed by mechanically connecting a standard LED modular lamp onto a customer-preferred case, which finds wide applications where existing cases are preserved during replacement of LED street light.



Product catalogue and working parameter

Model	Capacity(W)	Efficacy	Luminous	Inst. Hgt.	Replacing HPSV
NSL-R521	60	90	5400	6-8m	250W
NSL -R621	80	90	7200	7-9m	350W
NSL -R721	100	90	9000	8-12m	400W
NSL -R821	120	90	10800	10-14m	450W
NSL -R921	140	90	12600	12-16m	450W

NEOLUX LED LIGHTS-BUILD IN SERIES



The lightweight, compact and reliable integral LED street light is made by integrating the LED lamps and the case into one piece.

Product catalogue and working parameter

Neolux LED street light has been installed nearly 70,000pcs all over the world					
Model	Capacity(W)	Efficacy(lm/w)	Luminous(lumen)	Inst. Hgt.	Replacing HPSV
NSL-S521	60	90	5400	6-8m	250W
NSL-S621	80	90	7200	7-9m	350W
NSL-S721	100	90	9000	8-12m	400W
NSL-S821	120	90	10800	10-14m	450W
NSL-S921	140	90	12600	12-16m	450W



Main Features

- Unique optical design leading to uniform and comfortable light rays
- Use CREE LEDs as luminous source, saving energy, having high brightness and long life.
- High luminaire efficiency over 90%
- Power efficiency over 85%, Power factor over 0.98, IP rating over 65
- Superior color rendering index up to 90 near daylight quality
- Wide color of temperature tuning range from 3000K to 7000K
- Patented appearance and mechanical structure, Being compact and lightweight
- Constant current and low-voltage drive mode leading to high safety and no glares
- Green and environment-friendly: lead-free, no-mercury, no fragile glass
- No environment-harmful materials, No light pollution: no IR, no UV, Anti-vibration and shock-proof.
- Tremendous energy saving: more than 70% electricity saving over conventional Metal halide lamps
- Long lifetime over 20 years (6 hours a day), 3 years warranty

Electricity saving figure

Economic contrast between the LED street light with high pressure sodium lamp

Comparing Item	Original Lighting system		Latest Lighting system	
	Lighting Source	HSVP 250w	Quantity: 40pcs	Neolux LED street light 60w
Maintenance Cost	HSVP life is 1 year, change 2 pcs in 3 years		LED long life don't need change in 3 years	
Power Consumption	12 hours per day, operating 3 years, the electricity charge is RMB0.8/KWH (reference price)			
	84,642Kwh/year		10,698Kwh/year	
	253,926Kwh/3years		32,094Kwh/3years	
Electricity charge	RMB 67,713/year		RMB 8,558/year	
	RMB 203,141/3years		RMB 25,675/3years	
Electricity charge saved	221,832Kwh/3years			
	RMB 177,465.55/3years			
Conclusion	In 3 years, compare with the high pressure sodium lamp, it can save RMB 177,465.55			

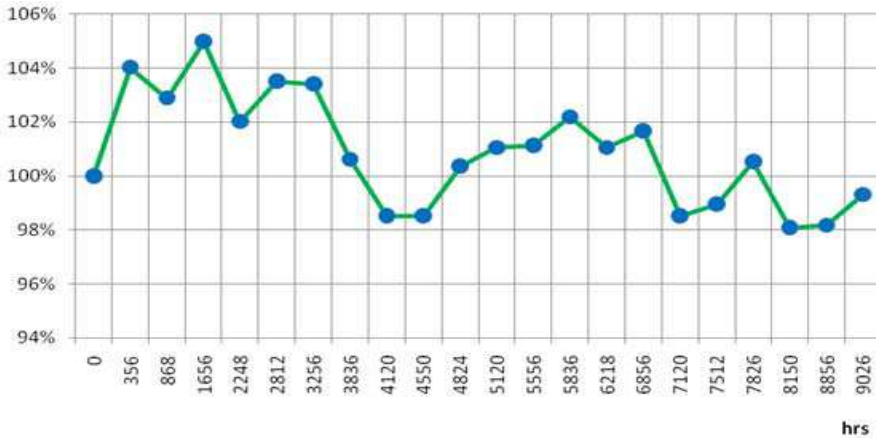
Environmental figure

It has been testified by authority investigation that reducing the consumption of energy sources can decrease the greenhouse gas emission effectively. In China, it has more economical meaning in energy saving and emission reduction.

- ✓ Every kilowatt saved in power consumption is equal to a saving of consuming 0.4kg of standard coal and 4 liter of pure water; in the mean time, it also reduces the emission of 0.272 kg of carbon dust, 0.997 kg of carbon dioxide and 0.03kg of Sulfur Dioxide.
- ✓ One kilowatt saved, 7 yuan contributed to GDP
- ✓ If 1/3 lighting of our country to be applied with LED lighting, we could save approximately 100 billion kilowatt power each year, which is more than the total power generated by the Three Gorges dam (80 billion kilowatt)
- ✓ The temperature of the city will be cooled by 2 centigrade if they adopt LED for all street lightings.
- ✓ Installing 1 kilowatt of solar Energy will reduce emission over the course of 25 year expected life of panes, which including 22,275kgs of carbon dioxide, 56.25kgs of nitrous dioxide and 180kgs of Sulfur Dioxide



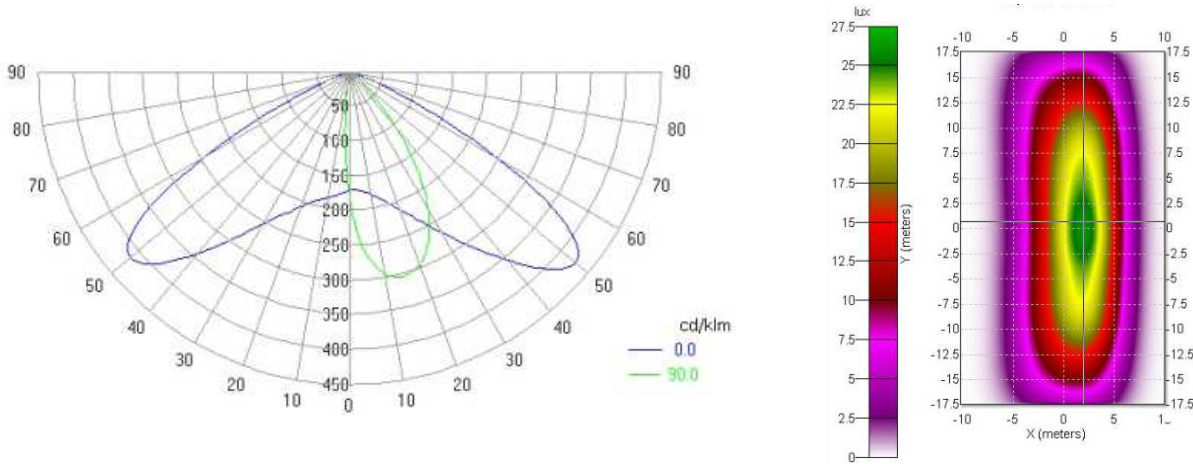
Luninarie decay curve



Remark: this draft is the test result for many roads applied with Neolux LED street light, It precisely reflect the real luminous decay in application. The repacment ratio for difective lamps is less than 1% in 3 years.

Photometric curve of illuminarie (60w)

The street light's photometric curve likes a maple leaf, and each section may not be same according to requirements, reasonable control light distributing, which makdes facula be square shape.



Neolux's proprietary photometric design patented curved arrangement of LED lamps assures precise control of the light distribution, ileal brightness uniformity on road surface, and high luminaire efficiency, while eliminates optical glares and pollutions. The key parts constituting the LED street lights are formed by word-class white power LED lamps with efficacy over 90-100lm/w and lifetime over 50000hrs.All eutectic bonding assures perfect LED thermal management from chip to external heat sinking mechanisms.

Four Kinds of Street light arrangement

