

LED Street Light

Specification

Features and Benefits

- 5 years Guarantee
(50,000hours lifetime @ 70% Lumen maintenance)
- JT (junction temperature) is less than 72
- LHP(loop heat pipe) heatsink design
- Light weight(100w:5.5Kg and 150w:8.5Kg)
- Strong Wind Resistance ability
- 100w LED street light=250w LED HPS street light
150w LED street light=400w LED HPS street light



JZSL-100



JZSL-150



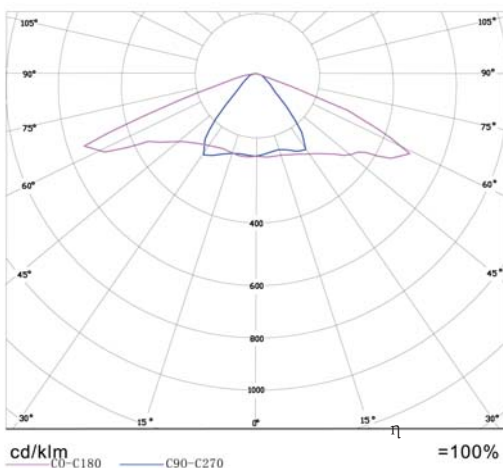
Application: Jiuzhou Industry Park
in Mianyang Sichuan

Technical Specification

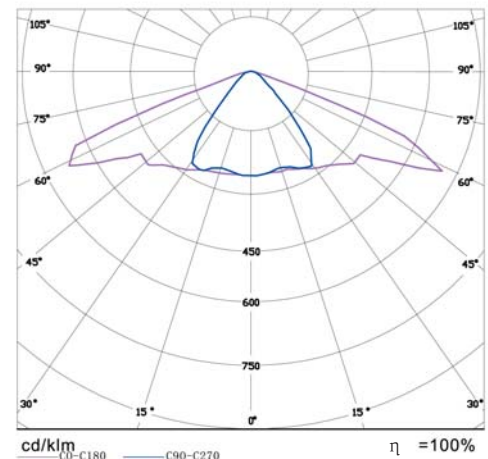
Part No.	JMSL-150			JMSL-100		
Light Source	High brightness 1W LED (126pcs)			High brightness 1W LED (84pcs)		
Luminous Efficiency	90-100lm/W					
Luminous Flux	8006lm			5346lm		
System Consumption	155W			103W		
System Efficiency	>52lm/W					
Central Luminous Indensity	30lux (H=12m)			24lux (H=10m)		
Luminaire Height	Max. Illumination	Average. Illumination	Illumination Uniformity	Max. Illumination	Average. Illumination	Illumination Uniformity
7m	31lux	10.2lux	3.2	47lux	16lux	5
8m	24lux	8.5lux	2.7	36lux	13lux	4
9m	19lux	7.5lux	2.4	28lux	12lux	3.8
10m	15lux	6.5lux	2.1	23lux	9.4lux	2.9
11m	13lux	5.7lux	1.8	19lux	8.3lux	2.6
12m	11lux	5.5lux	1.7	16lux	7.4lux	2.3
Input Voltage	24V DC					
Input Current	6.3A DC			4.2A DC		
Frequency Range	47-53Hz					
Heat Dissipation Tech.	Loop Heat Pipe(LHP)					
Power Factor	≥0.97					
Power efficiency	≥87%					
Working Temperature	-30°C- +40°C					
Lifetime	50,000 hrs(70% lumen maintenance @ 50,000 hours)					
Dimension	630*315*120 (mm)			580*250*120 (mm)		
Light Body & Lampshade Material	Die-casting Aluminium; Anti-UV PC			Extruded Aluminum; Anti-UV PC		
Weight	8.5KG			5.5KG		
Protection Rating	IP65					
Effective Illuminated Area	12m height: 36m×15m			10m height: 30m×12m		
Illumination Uniformity	0.5 (L=3H)					

Candle Power Distribution

JZSL-150

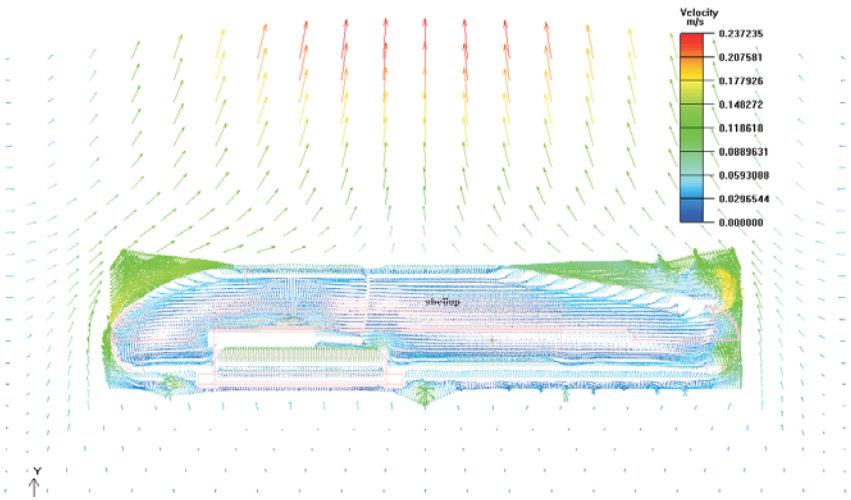
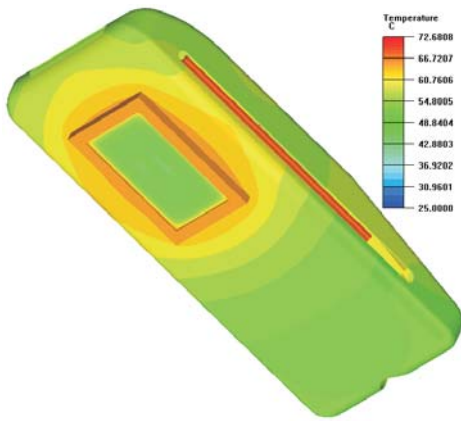
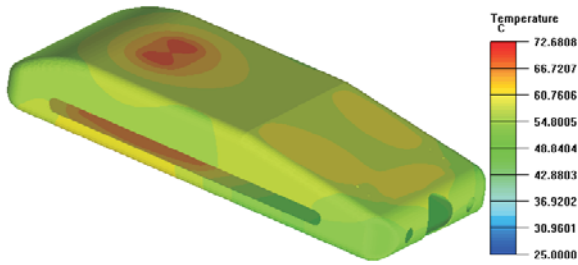


JZSL-100

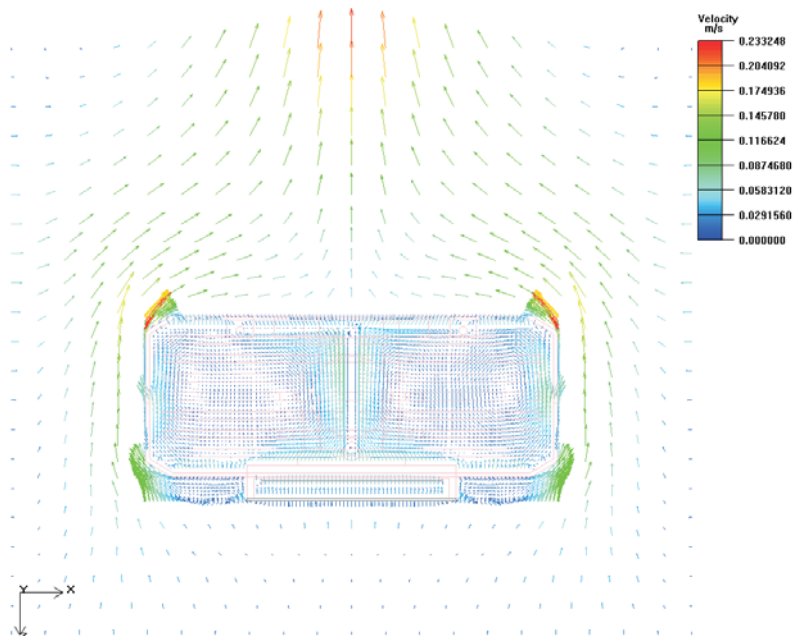
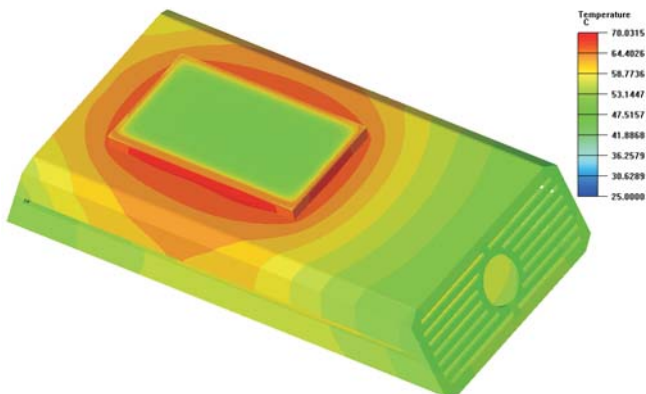
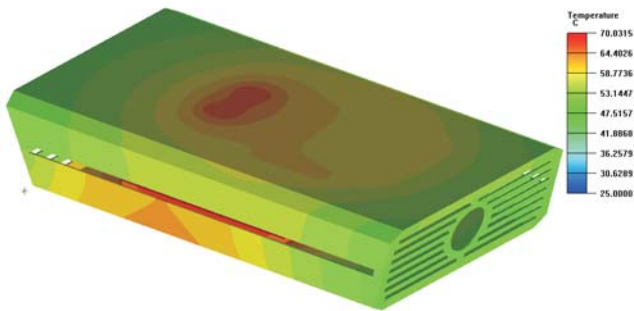


Thermal Analysis

JZSL-150



JZSL-100

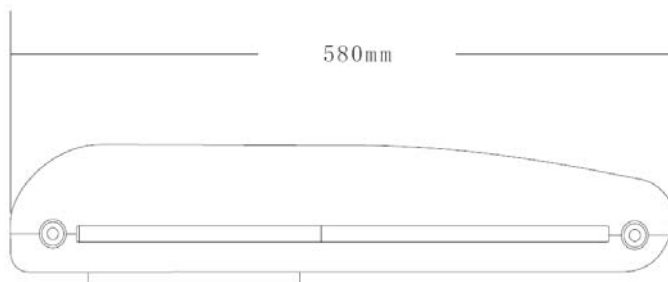
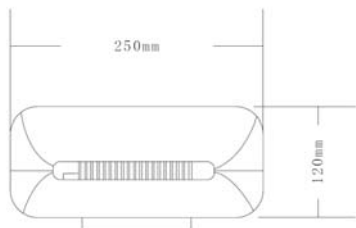


Comparison

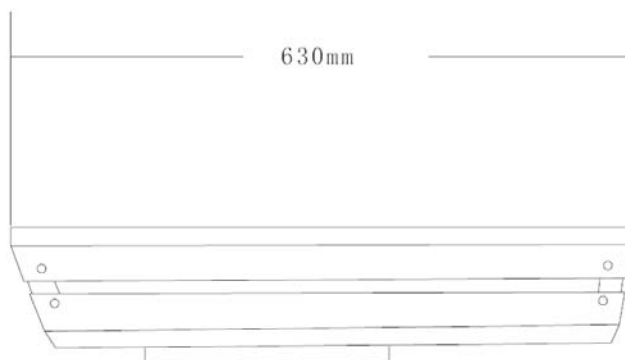
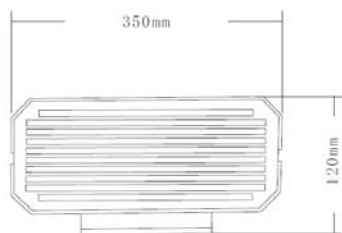
Item	250W HPS	100W LED Street Light
Spectrum	Driven by UV	No UV
CRI	30~50%	80~90%
Max. Illumination	32lux	20lux
Average Illumination	16lux	15.23lux
Illumination Uniformity	0.38	0.57
Environmental Friendly	Contains Mercury and heavy metal, can not be recycled	Semiconductor chip inside, can be recycle
Smart Control	Single light source, can not be smart controlled	Multi-light source, can be smart controlled
Flicker	High voltage and frequency driven, with flicker	Low voltage DV- driven , no flicker
Working Voltage	High voltage 4000~7000V	36V DC
Working Stability	Off-Peak time over-current drive (250V) reduces the life the light source. The brightness changes with the fluctuation of the power network voltage, which increasing the power consumption, reducing the life span, shortening the light maintenance.	Over-current protection design and voltage regulator design make the brightness of the light stable, and expand the life span.
Light Distribution Design	Spherical light output, curvy reflect cover design , mature design, good light uniformity, high temperature causes reflect cover aging, effects the light output and refelctivity.	Directly light on ground, high luminous effeciency, complex light distribution design. Cold light source won't cause optical and glass aging problem.
Application	Main Road	Subsidiary Road
Light Decay	3,000hrs 30%-35%	10,000hrs 5%-8%
Lifetime	5,000~15,000hrs	30,000~50,000hrs
Power Factor	0.63	0.65
Total Power Consumption	260~270W	95~110W
Total System Consumption	270~280W	135~140W
Electricity Cost per year 12hrs/day 1.2RMB/KWH	939.51 RMB	313.17RMB
Diameter of Power Cable	2.5m 3PIN	1.5m 3PIN
Diameter of 500M Loop Power Cable	35m 4+1PIN	5 m 4+ 1PIN
Start	High voltage high currenxy start (3A),warm up time: 15~20 minutes	Low current start(0.6A),start time(0.06s),warm up is not needed

Dimension

JZSL-100



JZSL-150



Installation

1.Tool:

- 100W 8mm hexagonal screw driver
- 150W 13mm hexagonal screw driver



- 2.Fix the lamp head in the lamp post after connect the wire**



3.Fix the screws

