



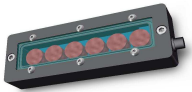
# Radix Super Light

## Product Line Overview

### SLC - Compact Series

The compact series lights offer a smaller footprint enclosure with the flexibility of controlling the lights using an external driver. Up to four light channels can be driven from a single controller. High power 1W LEDs are the source of an intense light pattern. Additional driver options, polarizers, diffusers, and colour options are available.

#### Bar Lights

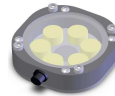


SLC-0106

SLC-0112

SLC-0224

#### Flood Lights

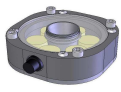


SLC-F006

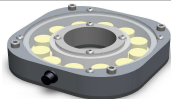
SLC-F012

SLC-F018

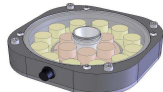
#### Ring Lights



SLC-R006



SLC-R012



SLC-R018

#### Driver Modules



LED-DM-S



LED-DM-D

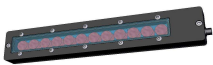


LED-DM-Q

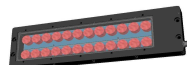
### SLD - Internal Driver Series

The internal driver series lights offer an all-in-one package for ease of integration. These light modules are ideal for robotic applications. High power 1W LEDs are the source of an intense light pattern. Additional polarizers, diffusers, and colour options are available.

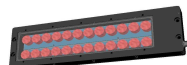
#### Bar Lights



SLD-0112



SLD-0203



SLD-0212

SLD-0224

#### Flood Lights

SLD-F006

#### Ring Lights



SLD-R006

SLD-R036

### Accessories (page 17)

Windows

Diffusers

Polarizers

Cables

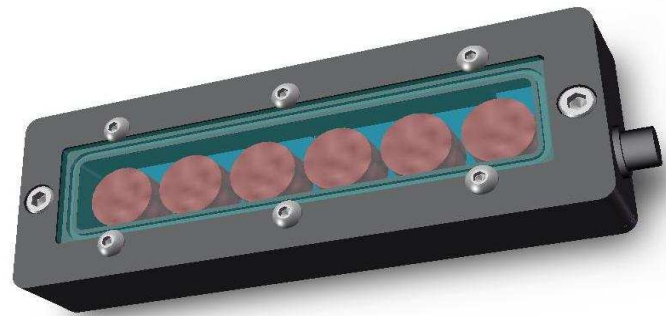


# Radix Super Light

## Compact 1x6 Linear Array

### Features

- 6 High Intensity 1W LED's
- Durable Delrin Enclosure
- External Driver Required
- Front Mounting using M6 or 1/4"-20 SHCS
- Rear Mounting using M8 Bolts
- Standard Industrial M12 Power Connection

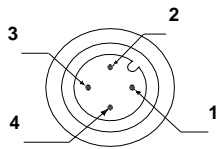


### Specifications

- Operating Temperature:** -40°C to 70°C
- Component Life:** 70% Lumen maintenance at 50,000 hours (junction temperature <= 90°C)
- Current Draw:** 370mA (White, Green, Cyan, Blue), consumes 9W  
320mA (Amber, Red), consumes 8W
- Operating Voltage:** 24VDC

### Pin-Out (Standard M12, 3-Pin)

- 1 - No Connection Brown
- 2 - No Connection White
- 3 - LED Common Blue
- 4 - LED 1 + OutPut Black



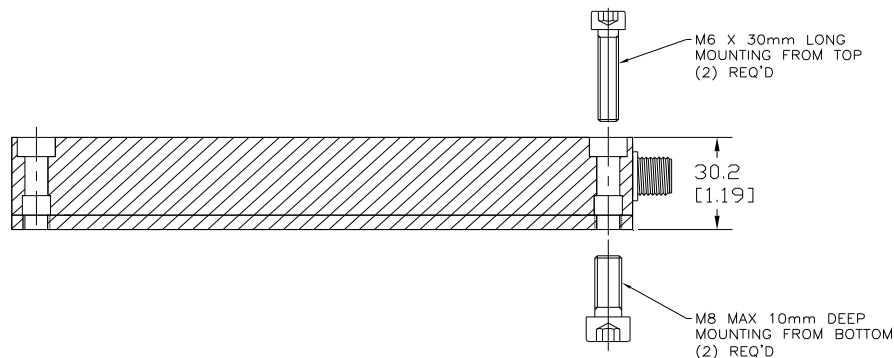
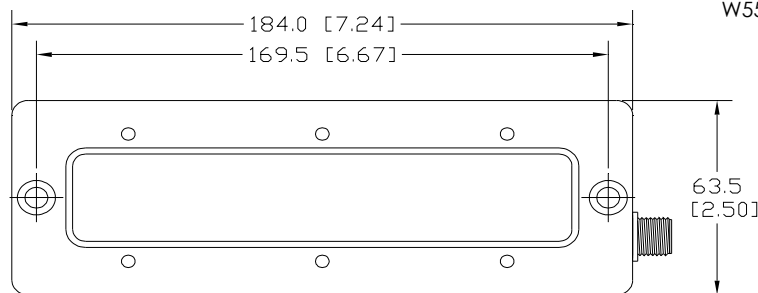
### Part Number Key

**SLC - 0106 - XXX - XX**

Product Family	Model	Colour	Options
		470 (Blue)	CL (Clear)
		505 (Cyan)	PL (Polarized)
		530 (Green)	DF (Diffuse)
		590 (Amber)	OG (Opal Glass)
		627 (Red)	
		W55 (5500K White)	

### External Driver Required

LED-DM-700-S



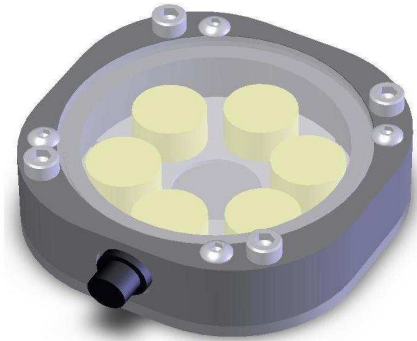


# Radix Super Light

## Compact 6 Flood Array

### Features

- 6 High Intensity 1W LED's
- Durable Delrin Enclosure
- External Driver Required
- Front Mounting using M6 or 1/4"-20 SHCS
- Rear Mounting using M8 Bolts
- Standard Industrial M12 Power Connection

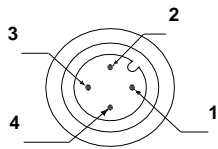


### Specifications

- Operating Temperature:** -40°C to 70°C
- Component Life:** 70% Lumen maintenance at 50,000 hours (junction temperature <= 90°C)
- Current Draw:** 370mA (White, Green, Cyan, Blue), consumes 9W  
320mA (Amber, Red), consumes 8W
- Operating Voltage:** 24VDC

### Pin-Out (Standard M12, 3-Pin)

- 1 - No Connection Brown
- 2 - No Connection White
- 3 - LED Common Blue
- 4 - LED 1 + OutPut Black



### Part Number Key

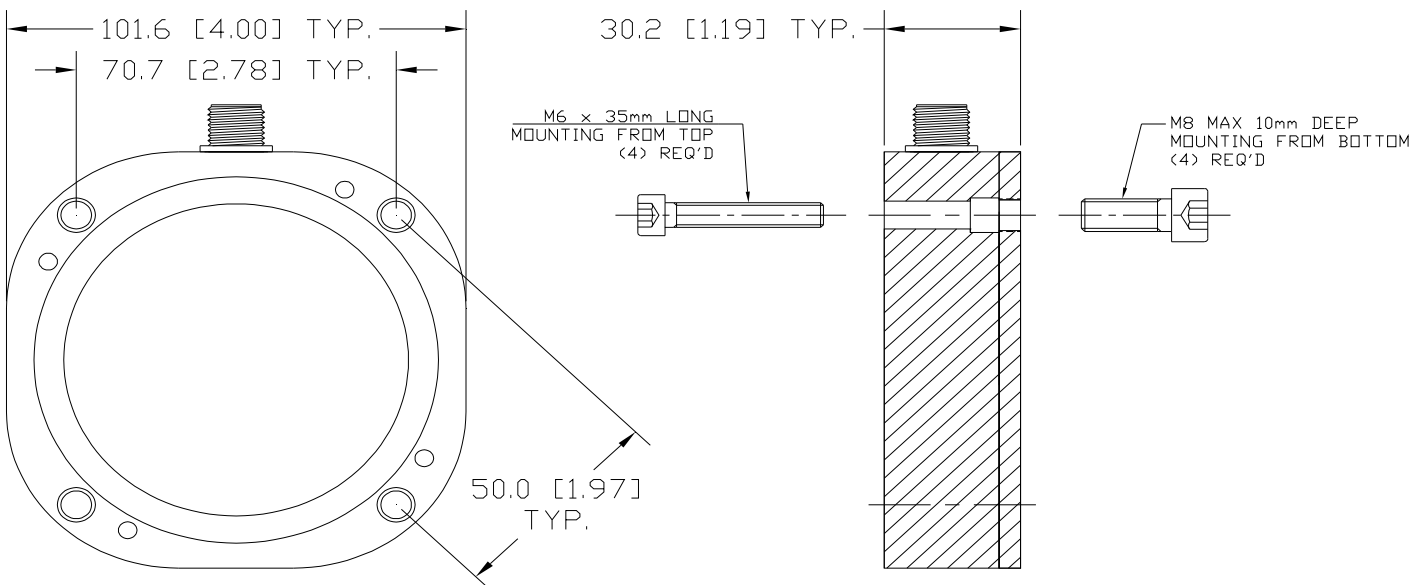


Product Family	Model	Colour	Options
----------------	-------	--------	---------

- 470 (Blue)
- 505 (Cyan)
- 530 (Green)
- 590 (Amber)
- 627 (Red)
- W55 (5500K White)
- CL (Clear)
- PL (Polarized)
- DF (Diffuse)

### External Driver Required

LED-DM-700-S



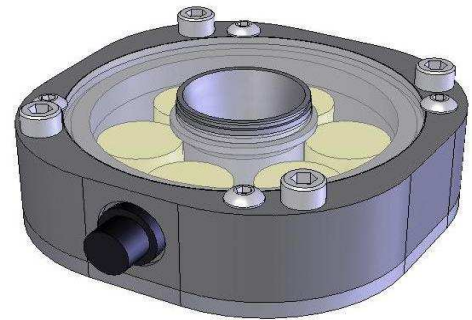


# Radix Super Light

## Compact 6 Ring Array

### Features

- 6 High Intensity 1W LED's
- Durable Delrin Enclosure
- External Driver Required
- Front Mounting using M6 or 1/4"-20 SHCS
- Rear Mounting using M8 Bolts
- Standard Industrial M12 Power Connection

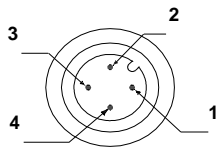


### Specifications

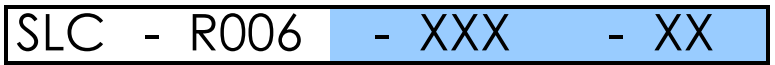
- Operating Temperature:** -40°C to 70°C
- Component Life:** 70% Lumen maintenance at 50,000 hours (junction temperature <= 90°C)
- Current Draw:** 370mA (White, Green, Cyan, Blue), consumes 9W  
320mA (Amber, Red), consumes 8W
- Operating Voltage:** 24VDC

### Pin-Out (Standard M12, 3-Pin)

- 1 - No Connection Brown
- 2 - No Connection White
- 3 - LED Common Blue
- 4 - LED 1 + OutPut Black



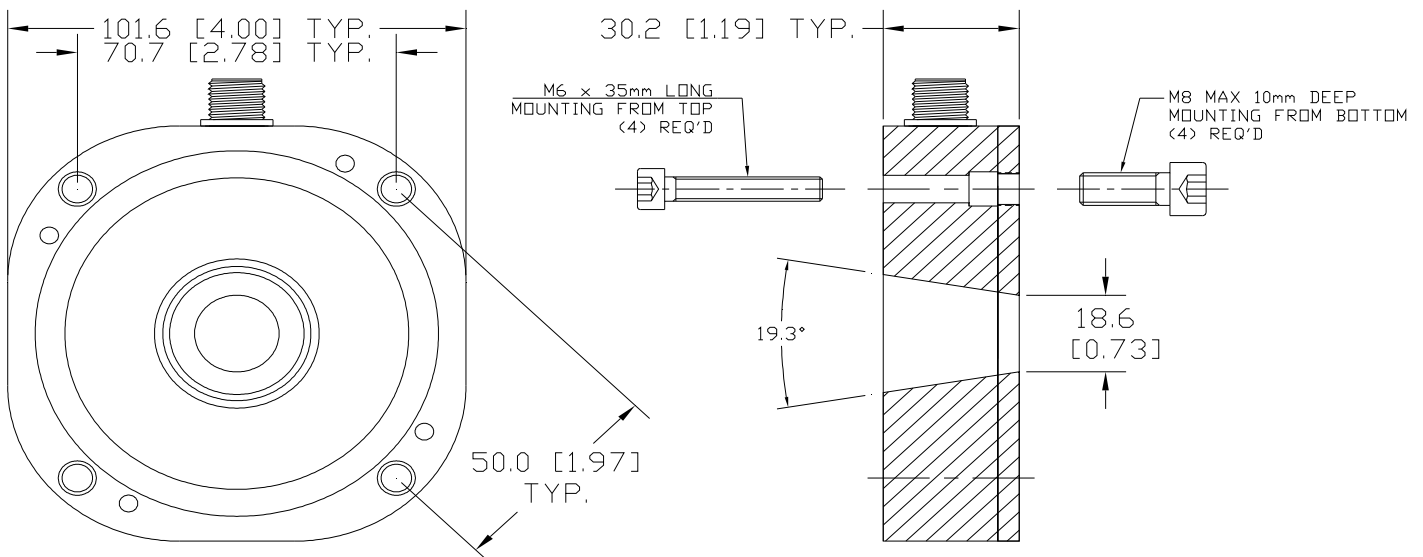
### Part Number Key



Product Family	Model	Colour	Options
		470 (Blue)	CL (Clear)
		505 (Cyan)	PL (Polarized)
		530 (Green)	DF (Diffuse)
		590 (Amber)	
		627 (Red)	
		W55 (5500K White)	

### External Driver Required

LED-DM-700-S



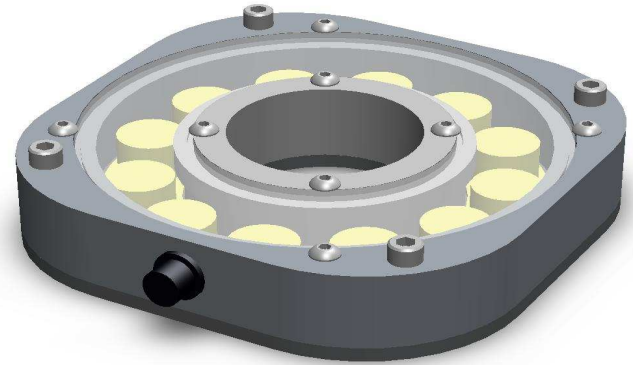


# Radix Super Light

## Compact 12 Ring Array

### Features

- 12 High Intensity 1W LED's
- Durable Delrin Enclosure
- External Driver Required
- Front Mounting using M6 or 1/4"-20 SHCS
- Rear Mounting using M8 Bolts
- Standard Industrial M12 Power Connection

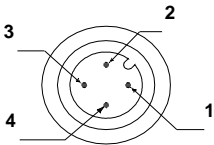


### Specifications

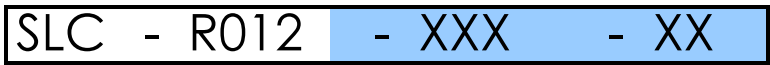
- Operating Temperature:** -40°C to 70°C
- Component Life:** 70% Lumen maintenance at 50,000 hours (junction temperature <= 90°C)
- Current Draw:** 720.6mA (White, Green, Cyan, Blue), consumes 17.3W  
617.7mA (Amber, Red), consumes 14.9W
- Operating Voltage:** 24VDC

### Pin-Out (Standard M12, 3-Pin)

- 1 - LED 1 + OutPut Brown
- 2 - No Connection White
- 3 - LED Common Blue
- 4 - No Connection Black



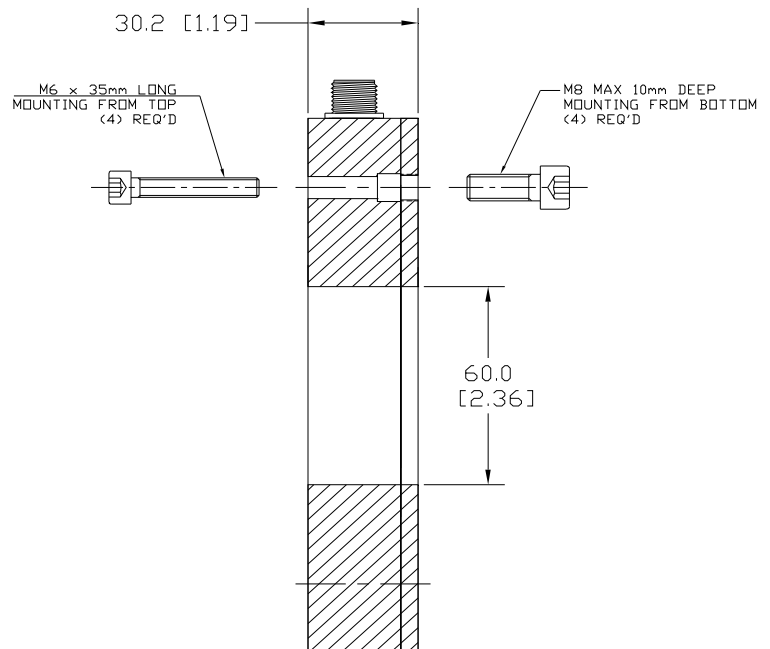
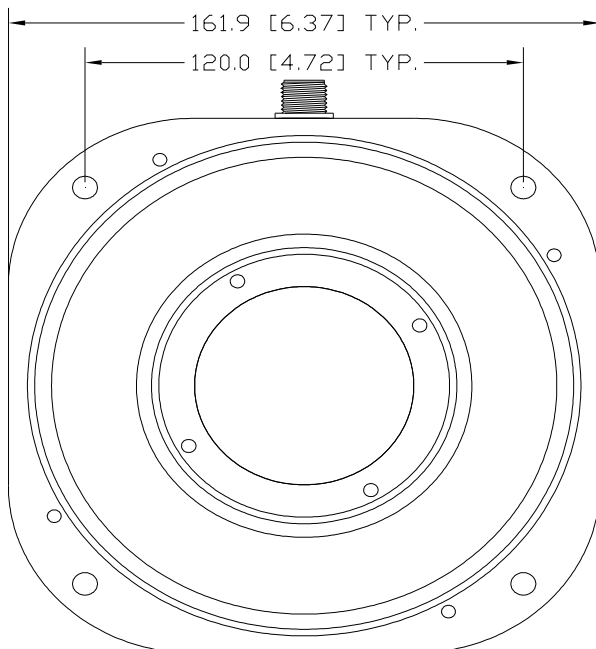
### Part Number Key



Product Family	Model	Colour	Options
		470 (Blue)	CL (Clear)
		505 (Cyan)	PL (Polarized)
		530 (Green)	DF (Diffuse)
		590 (Amber)	
		627 (Red)	
		W55 (5500K White)	

### External Driver Required

LED-DM-700-S



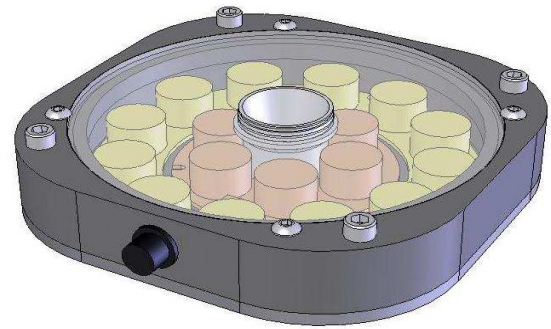


# Radix Super Light

## Compact 18 Ring Array

### Features

- 18 High Intensity 1W LED's
- Durable Delrin Enclosure
- External Driver Required
- Front Mounting using M6 or 1/4"-20 SHCS
- Rear Mounting using M8 Bolts
- Standard Industrial M12 Power Connection

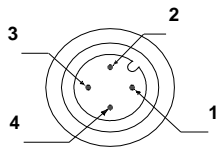


### Specifications

- Operating Temperature:** -40°C to 70°C
- Component Life:** 70% Lumen maintenance at 50,000 hours (junction temperature <= 90°C)
- Current Draw:** 1090mA (White, Green, Cyan, Blue), consumes 26.2W  
940mA (Amber, Red), consumes 22.6W
- Operating Voltage:** 24VDC

### Pin-Out (Standard M12, 3-Pin)

- 1 - LED 1 + OutPut Brown
- 2 - No Connection White
- 3 - LED Common Blue
- 4 - LED 2 + OutPut Black



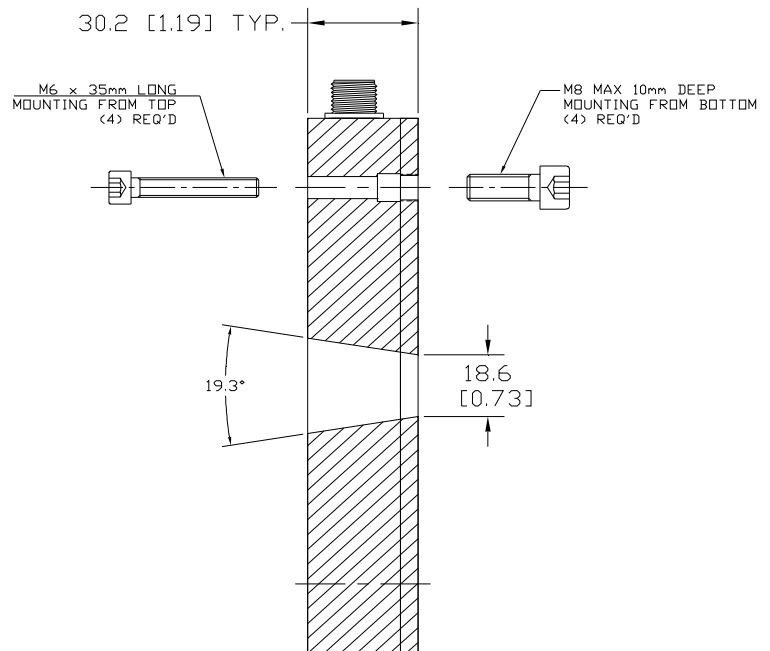
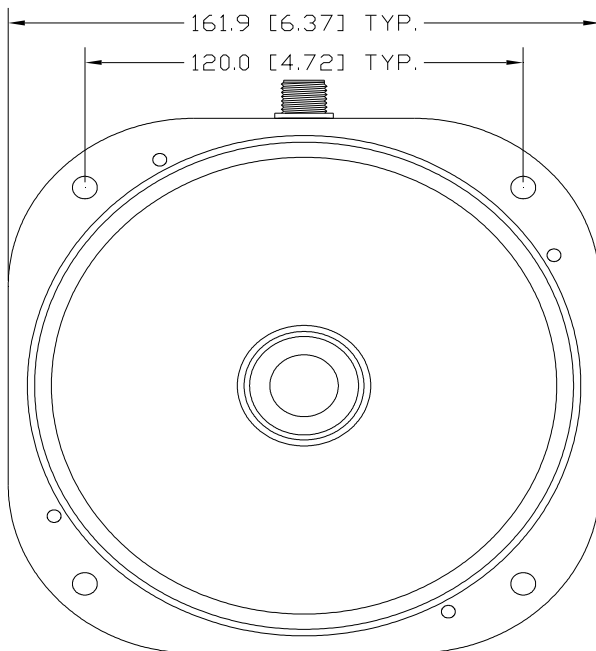
### Part Number Key

<b>SLC</b>	<b>- R018</b>	<b>- XXX</b>	<b>- XX</b>
------------	---------------	--------------	-------------

Product Family	Model	Colour	Options
		470 (Blue)	CL (Clear)
		505 (Cyan)	PL (Polarized)
		530 (Green)	DF (Diffuse)
		590 (Amber)	
		627 (Red)	
		W55 (5500K White)	

### External Driver Required

LED-DM-700-D





# LED Driver Module

300mA, 750mA, 1000mA

## Features

- Constant Current LED Driver
- Selectable Continuous or External Trigger
- Internal Potentiometer Intensity Control (0 - 100%)
- DIN Rail Mount Enclosure
- Open Circuit Protection for Output
- Short Circuit Protection for Output (15 seconds)



## Specifications

**Operating Temperature:** -20°C to 85°C  
**Operating Voltage:** 24 Vdc (6 Vdc to 32 Vdc)  
**Trigger Signal:** 24 Vdc (20 Vdc to 28 Vdc)  
**Output Current:** 350 mA, 700mA, 1000mA  
**Maximum Output Voltage:** VIN - 3 VDC

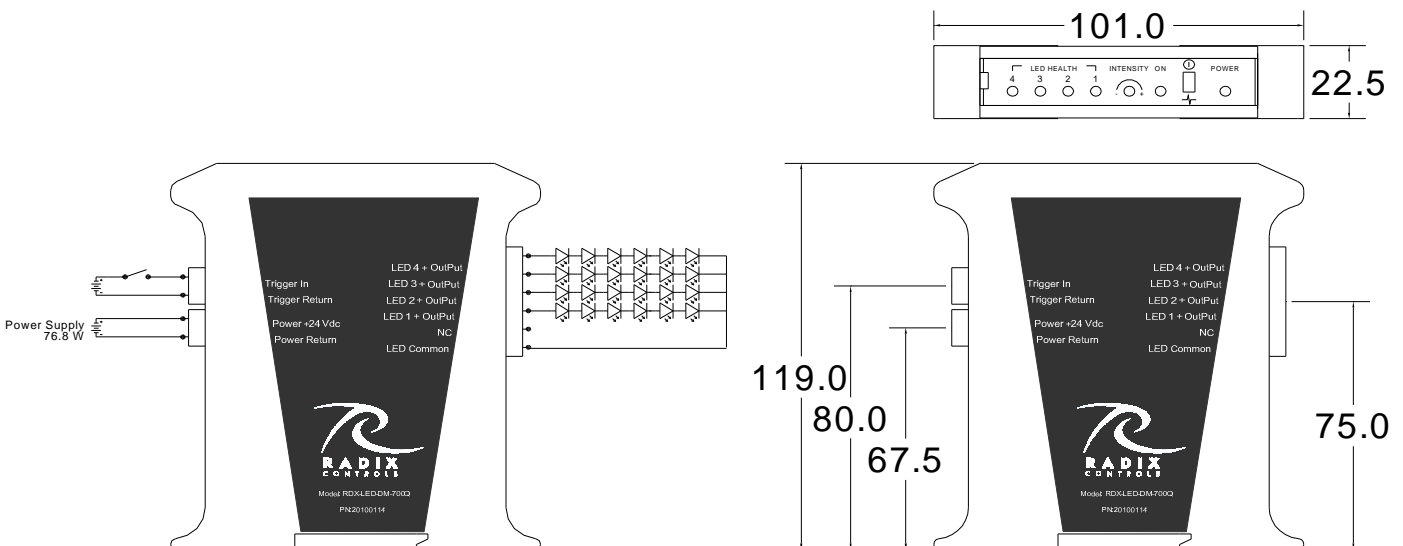
**Trigger on Delay:** < 26  $\mu$ s  
**Trigger off Delay:** < 26  $\mu$ s  
**Maximum Strobe Frequency:** 10 kHz  
**Minimum Strobe Pulse Width:** < 52  $\mu$ s

## Pin-Out

- 1 - Power Return (0Vdc)
- 2 - Power +24Vdc
- 3 - Trigger Return (0Vdc)
- 4 - Trigger In (24Vdc)
- 5 - LED Common (0Vdc)
- 6 - NC (No Connection)
- 7 - LED 1 + Output
- 8 - LED 2 + Output (Dual and Quad)
- 9 - LED 3 + Output (Quad)
- 10 - LED 4 + Output (Quad)

## Part Number Key

LED	- DM	- XXX	- X
Product Family		Model	Options
		350 mA	S (Single)
		700 mA	D (Dual)
		1000 mA	Q (Quad)



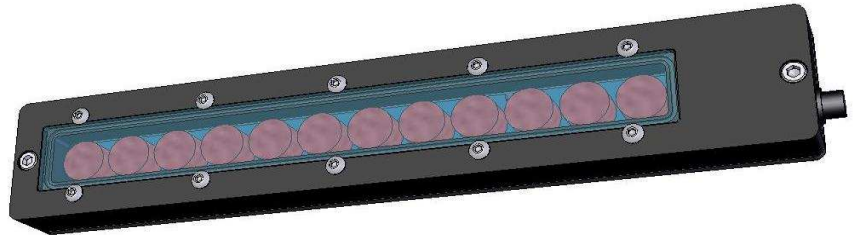


# Radix Super Light

1x12 Linear Array

## Features

- 12 High Intensity 1W LED's
- Durable Delrin Enclosure
- Internal Driver
- Front Mounting using M6 or 1/4"-20 SHCS
- Rear Mounting using M8 Bolts
- Standard Industrial M12 Power Connection

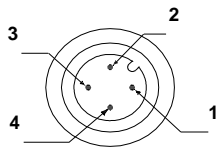


## Specifications

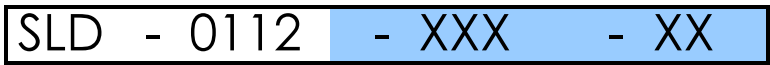
- Operating Temperature:** -40°C to 70°C
- Component Life:** 70% Lumen maintenance at 50,000 hours (junction temperature <= 90°C)
- Current Draw:** 720.6mA (White, Green, Cyan, Blue), consumes 17.3W  
617.7mA (Amber, Red), consumes 14.9W
- Operating Voltage:** 24VDC

## Pin-Out (Standard M12, 3-Pin)

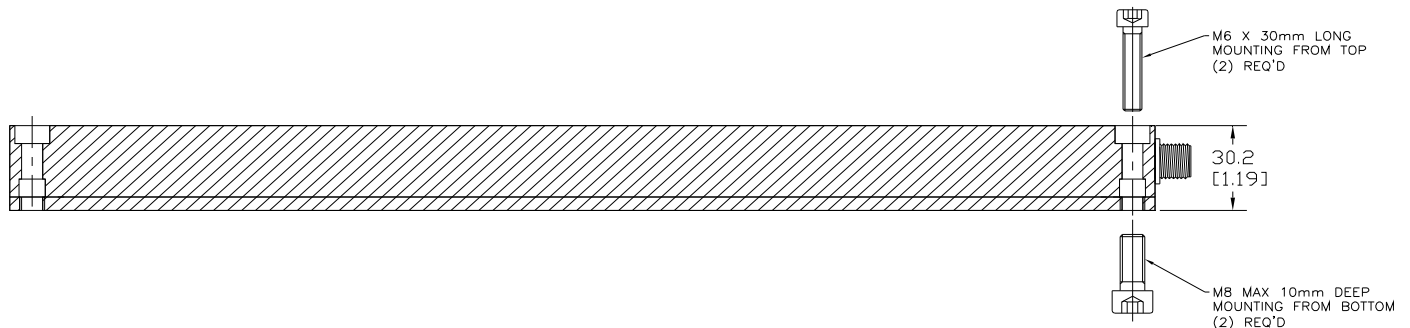
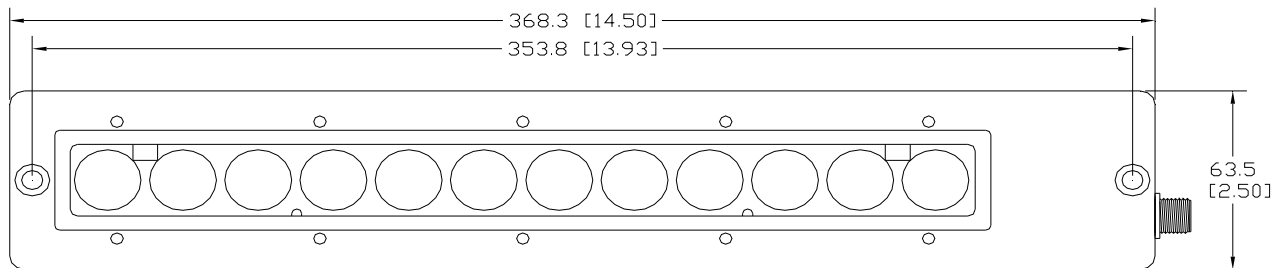
- |                   |       |
|-------------------|-------|
| 1 - 24VDC         | Brown |
| 2 - No Connection | White |
| 3 - 0VDC          | Blue  |
| 4 - Shutdown      | Black |



## Part Number Key



Product Family	Model	Colour	Options
		470 (Blue)	CL (Clear)
		505 (Cyan)	PL (Polarized)
		530 (Green)	DF (Diffuse)
		590 (Amber)	OG (Opal Glass)
		627 (Red)	
		W55 (5500K White)	





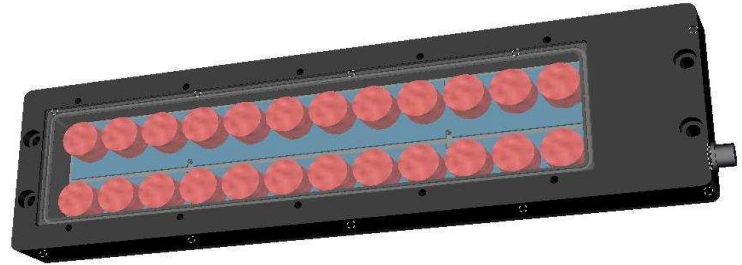


# Radix Super Light

2x12 Linear Array

## Features

- 24 High Intensity 1W LED's
- Durable Delrin Enclosure
- Internal Driver
- Front Mounting using M6 or 1/4"-20 SHCS
- Rear Mounting using M8 Bolts
- Standard Industrial M12 Power Connection

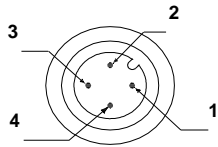


## Specifications

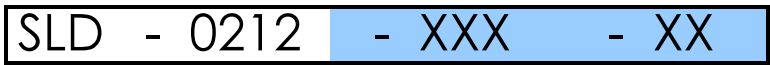
- Operating Temperature:** -40°C to 70°C
- Component Life:** 70% Lumen maintenance at 50,000 hours (junction temperature <= 90°C)
- Current Draw:** 1.45A (White, Green, Cyan, Blue), consumes 35W  
1.24A (Amber, Red), consumes 30W
- Operating Voltage:** 24VDC

## Pin-Out (Standard M12, 3-Pin)

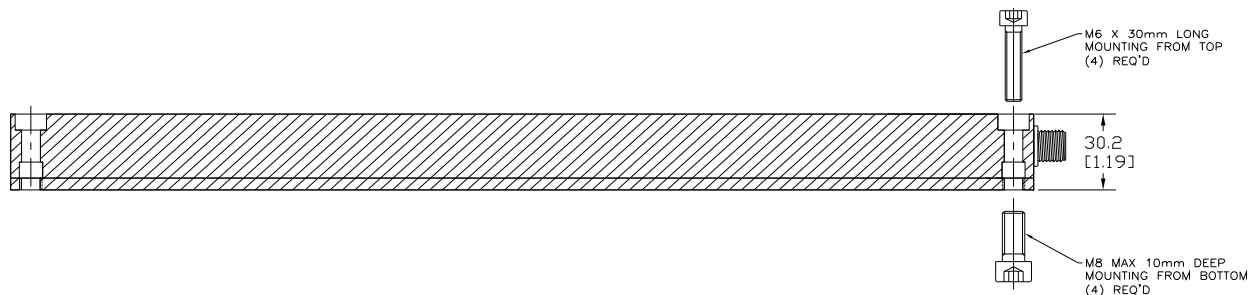
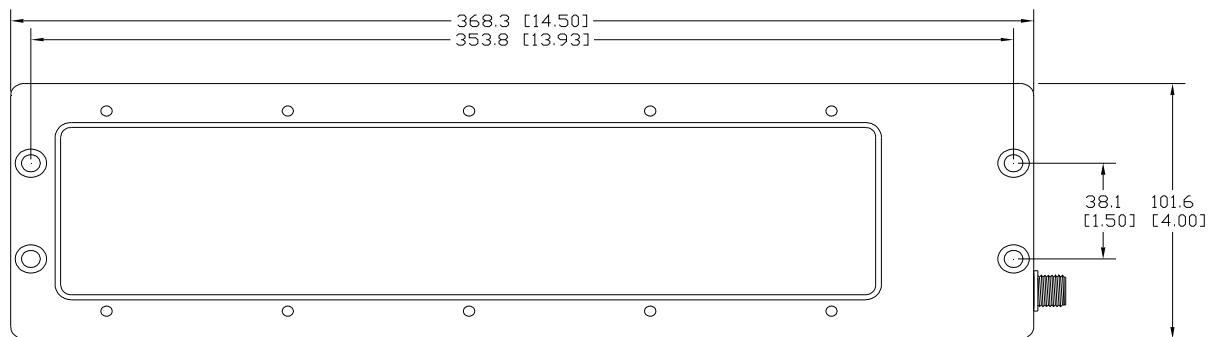
- |                   |       |
|-------------------|-------|
| 1 - 24VDC         | Brown |
| 2 - No Connection | White |
| 3 - 0VDC          | Blue  |
| 4 - Shutdown      | Black |



## Part Number Key



Product Family	Model	Colour	Options
		470 (Blue)	CL (Clear)
		505 (Cyan)	PL (Polarized)
		530 (Green)	DF (Diffuse)
		590 (Amber)	OG (Opal Glass)
		627 (Red)	
		W55 (5500K White)	





# Radix Super Light

## 36 Ring Array

### Features

- 36 High Intensity 1W LED's
- Durable Delrin Enclosure
- Internal Driver
- Front Mounting using M6 or 1/4"-20 SHCS
- Rear Mounting using M8 Bolts
- Standard Industrial M12 Power Connection

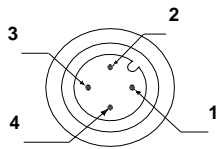


### Specifications

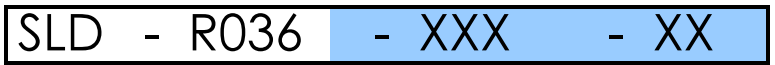
- Operating Temperature:** -40°C to 70°C
- Component Life:** 70% Lumen maintenance at 50,000 hours (junction temperature <= 90°C)
- Current Draw:** 2.2A (White, Green, Cyan, Blue), consumes 52.8W  
1.86A (Amber, Red), consumes 44.7W
- Operating Voltage:** 24VDC

### Pin-Out (Standard M12, 3-Pin)

- |                   |       |
|-------------------|-------|
| 1 - 24VDC         | Brown |
| 2 - No Connection | White |
| 3 - 0VDC          | Blue  |
| 4 - Shutdown      | Black |

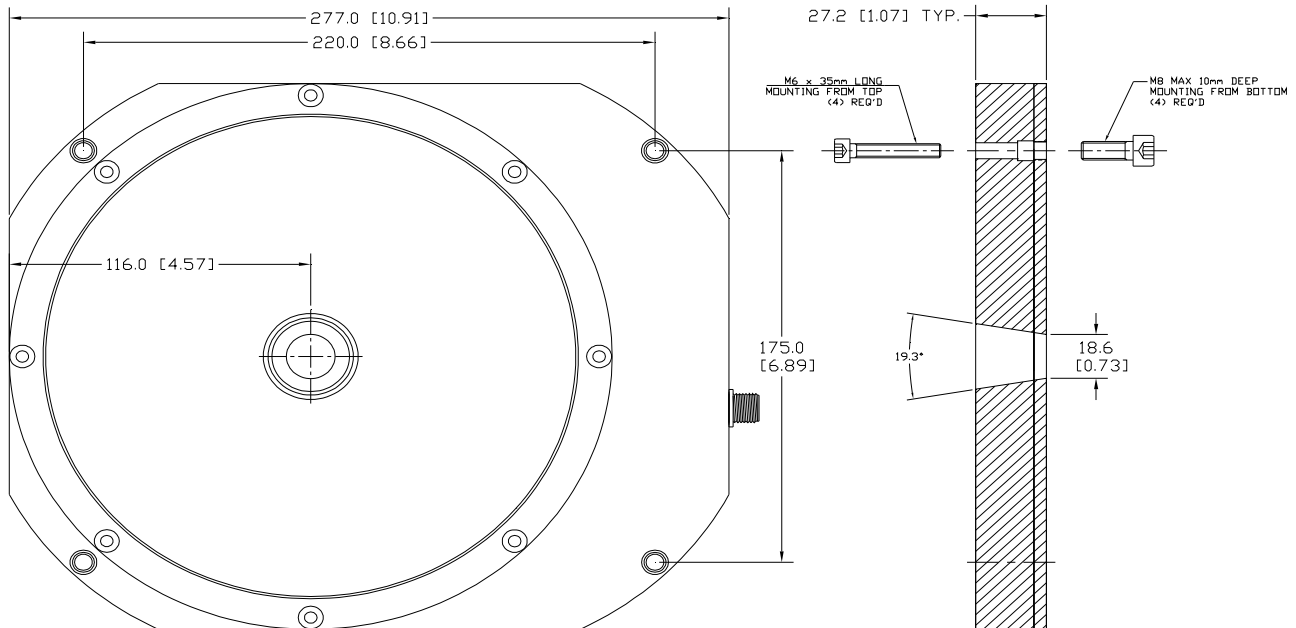


### Part Number Key



<b>Product Family</b>	<b>Model</b>	<b>Colour</b>	<b>Options</b>
-----------------------	--------------	---------------	----------------

- |                   |                |
|-------------------|----------------|
| 470 (Blue)        | CL (Clear)     |
| 505 (Cyan)        | PL (Polarized) |
| 530 (Green)       | DF (Diffuse)   |
| 590 (Amber)       |                |
| 627 (Red)         |                |
| W55 (5500K White) |                |





# Radix Super Light

## Price List

### Lights

Model Number	Description (Includes Light, Driver, 5m Cable)	List Price (USD)
SLC-F006	Compact 6 Flood Array (w/ ext driver)	\$650
SLC-F006	Compact 6 Flood Array (w/ ext driver)	\$625
SLC-F012	Compact 12 Flood Array (w/ ext driver)	\$950
SLC-F018	Compact 18 Flood Array (w/ ext driver)	\$1,250
SLC-R006	Compact 6 Ring Array (w/ ext driver)	\$750
SLC-R012	Compact 12 Ring Array (w/ ext driver)	\$950
SLC-R018	Compact 18 Ring Array (w/ ext driver)	\$1,250
SLD-0112	1x12 Linear Array (w/ int driver)	\$950
SLD-0212	2 X 12 Linear Array (w/ int driver)	\$1,250
SLD-0224	2 X 24 Linear Array (w/ int driver)	\$1,950
SLD-F006	6 Flood Array (w int driver)	\$850
SLD-R006	6 Ring Array (w/ int driver)	\$1,000
SLD-R036	36 Ring Array (w/ int driver)	\$2,950

### Drivers

Radix Part Number	Description	List Price (USD)
20000112	LED-DM-750-S, LED Driver Module, 750mA, Single	\$165
20000113	LED-DM-750-D, LED Driver Module, 750mA, Double	\$195
20000114	LED-DM-750-Q, LED Driver Module, 750mA, Quad	\$265
20000115	LED-DM-350-S, LED Driver Module, 350mA, Single	\$165
20000116	LED-DM-350-D, LED Driver Module, 350mA, Double	\$225
20000117	LED-DM-350-Q, LED Driver Module, 350mA, Quad	\$295

### Cables

Radix Part Number	Description	List Price (USD)
13200137	Female Straight Micro M12 Single Ended 3-Pole	\$15
13200138	Female Straight Micro M12 Single Ended 3-Pole	\$20
13200139	Female Straight Micro M12 Single Ended 3-Pole	\$25