

# THORN

## Promenade LED

Elegant bollard providing light and colour in urban areas



# Light and Colour



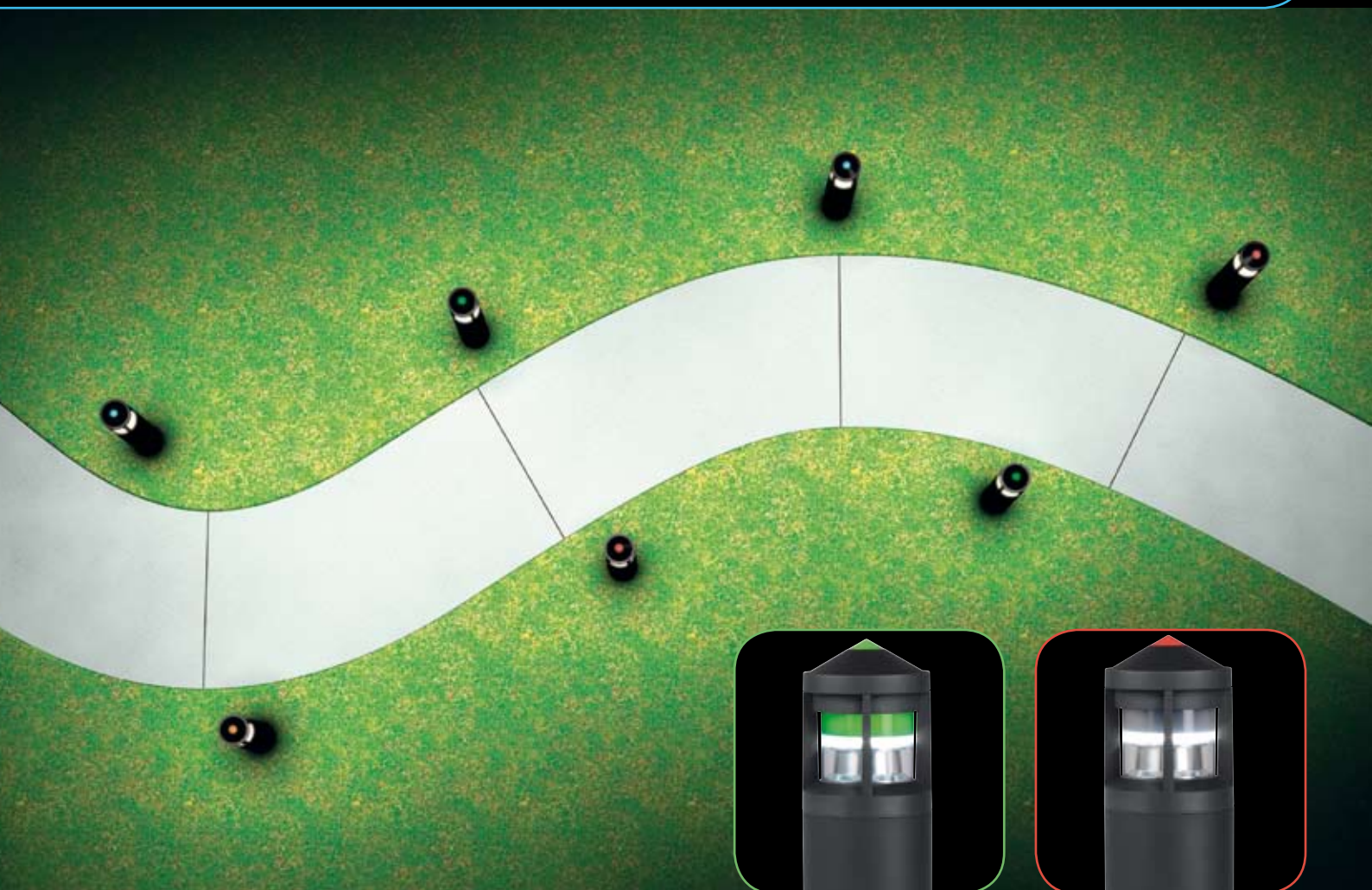
A solid and elegant range of bollard and parapet luminaires equipped with LED's to light and create coloured ambiances in pathways, entrances, business centres and parks

## Light

Promenade's new and unique optical system optimises the light output and uniformity from 15 high powered white LEDs enabling this stylish bollard/parapet luminaire to efficiently light pedestrian areas.

## Colour

A removable accessory allows either the whole upper part or just the top cone to be lit in colour depending on the required effect: visual guidance or lighting effect. RGB dynamic colour change version on request.



Green version without accessory

Red version with accessory

# Subtle colour to create identities in the city



*To signal the entrance to a leisure centre, a cinema or a business centre while reinforcing the corporate colours*



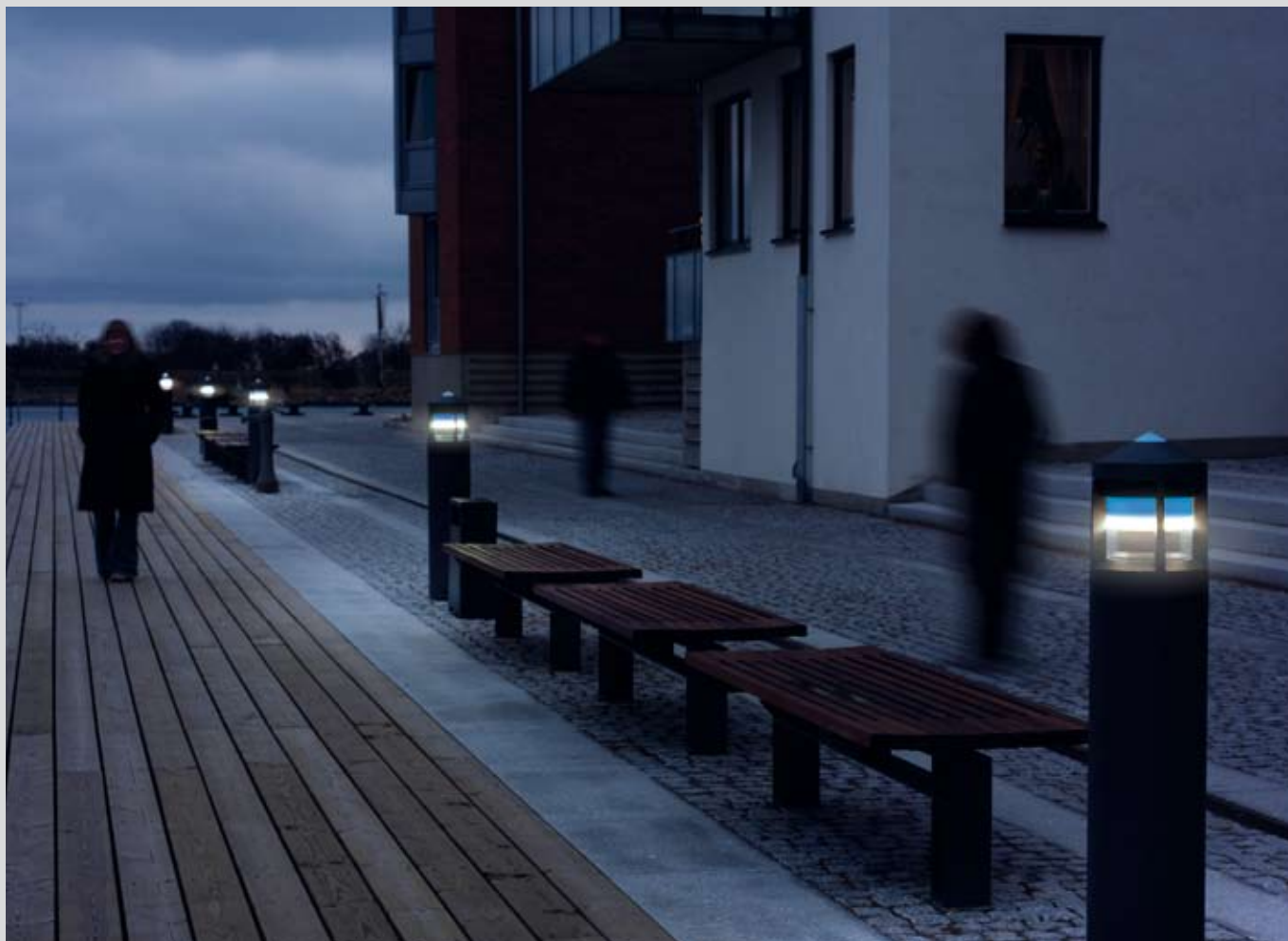
*Enhancing a pathway or cycle track through a park*



*For atmosphere along a riverside footpath or in a leisure area*



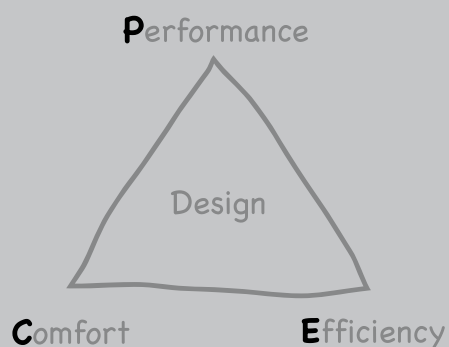
*To create a warm and inviting ambience around a hospital or residential building*



### Performance, efficiency, comfort

Optimised light output ensures:

- Better performance
- Energy efficiency
- No obtrusive light
- No glare



### LED Technology

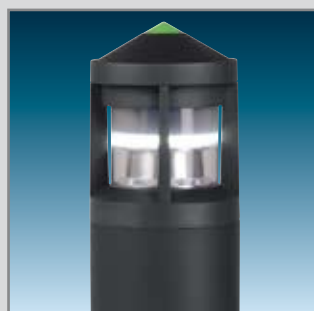
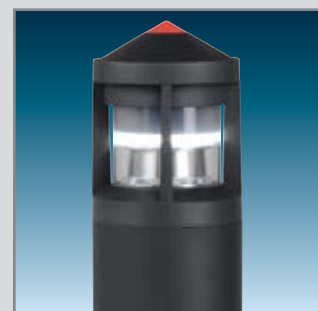
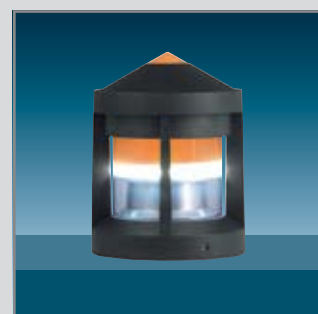
The character of LED technology is quite unique, enabling it to achieve levels of performance and functionality unobtainable with alternative lighting methods.

- Long operating life (up to 50,000hrs)
- Maintenance cost saving
- High efficiency
- Low wattage
- Low voltage
- Cold beam
- High optical performance
- Dynamic colour change (on request)
- No UV
- Instant light
- Extensive choice of colours

# Promenade LED



Circular bollard and parapet luminaires with unique optical system combined with LED technology to provide white light and colour effect



Designer: Chr. Hvidt

- Elegant design for easy integration in a variety of applications
- Same design as standard Promenade bollard for retrofitting
- Robust and vandal resistant die-cast aluminium (LM6) body
- Versions for flange, root or parapet mounting

- Expresses safety, strength and harmony in urban amenity lighting applications
- Polycarbonate diffuser with sand-blasted anti-glare band
- Optimised output ensures no obtrusive light
- Low voltage LEDs for energy savings, long life and reduced maintenance, other lamp types available

# Ordering Guide, Photometrics & Dimensions



## Lamps

- ☒ 15 x white DMX LEDs 1.2W
- ☒ 3 x colour DMX LEDs 1.2W (blue, green, red, amber, or RGB on request) 21.6W total output. Also available in 42W TC-TEL compact fluorescent, 70W HSE-I high pressure sodium and 80W HME high pressure mercury.

## Materials/Finish

Head and body: powder coated die-cast LM6 aluminium, anthracite (close to RAL 7024)  
 Top cone: opal polycarbonate  
 Diffuser: clear polycarbonate with internal sand-blasted band

## Installation/Mounting

Flange mounting plate or support for root mounting. LED module and power supply can easily be retrofitted into an existing bollard.

## Standards

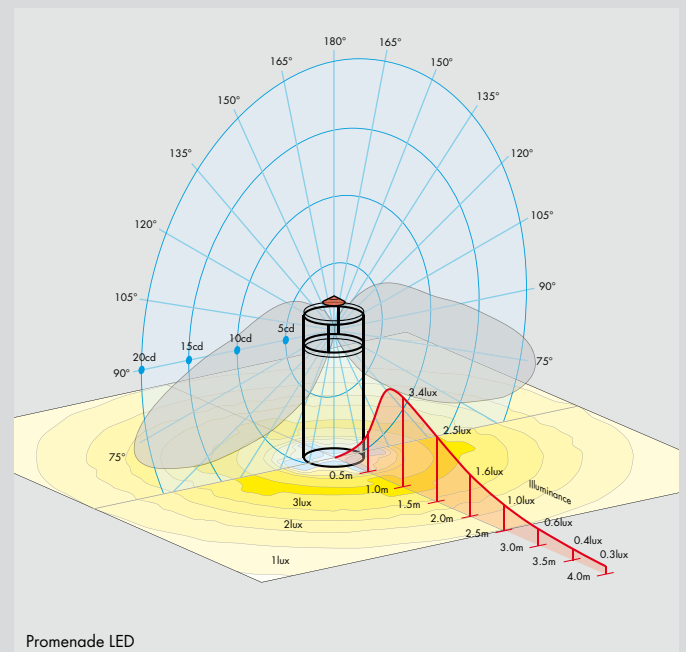
Designed and manufactured to comply with EN60598

- ☐ Class II Electrical
- 850°C fire retardant
- IK10 impact resistance
- ⚡ IP54



## Specification

To specify state: Decorative aluminium bollard with clear diffuser including a sand blasted band and with small luminous cone. Complete with 18 x 1.2W DMX LEDs.  
 Parapet/flange/root mounted.  
 As Thorn Promenade LED.



Promenade LED

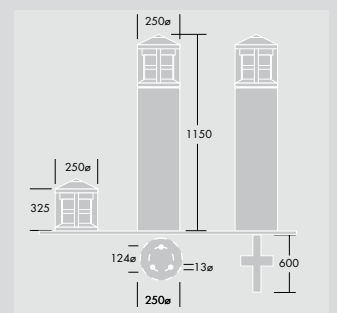
## Ordering Guide

Lamps to be ordered separately (except LED versions)

Description	Ilcos Code	Socket	Weight (Kg)	SAP Code
<b>Parapet mounted</b>				
PROMENADE BOL LED WHI/AMB 325MM MPL ANT	-	-	8	96231685
PROMENADE BOL LED WHI/RED 325MM MPL ANT	-	-	8	96231684
PROMENADE BOL LED WHI/GRN 325MM MPL ANT	-	-	8	96231683
PROMENADE BOL LED WHI/BLU 325MM MPL ANT	-	-	8	96231682
<b>Bollard flange mounted</b>				
PROMENADE BOL LED WHI/AMB 1150MM MPL ANT	-	-	15	96250884
PROMENADE BOL LED WHI/RED 1150MM MPL ANT	-	-	15	96250885
PROMENADE BOL LED WHI/GRN 1150MM MPL ANT	-	-	15	96250886
PROMENADE BOL LED WHI/BLU 1150MM MPL ANT	-	-	15	96250887
<b>Other lamp types, Parapet mounted</b>				
PROMENADE BOL 42W TC-TEL 325MM MPL ANT	FSM	GX24q-4	8	96100262
<b>Other lamp types, Bollard flange mounted</b>				
PROMENADE BOL 70W HSE-I 1150MM MPL ANT	SE/I	E27	15	96100249
PROMENADE BOL 42W TC-TEL HF 1150MM MPL ANT	FSM	GX24q-4	15	96004371
PROMENADE BOL 80W HME 1150MM MPL ANT	QE	E27	15	96004372
<b>Root mounted attachment</b>				
V/PROM/MAD BOL GROUND SPIKE	-	-	8	96005367

## Project Example:

Promenade LED only  
 Pathway for pedestrians  
 Pathway width: 1.5m  
 bollard installed at 15cm from the pathway  
 Single sided  
 Spacing 10m  
 Emin: 0.6 lx Eav: 2.2 lx  
 Emin/Eav: 0.25  
 Lighting class: S6 according to EN13201



# Contact Details

## Thorn Lighting Main Offices

### Head Office

Thorn Lighting Limited  
Silver Screens, Elstree Way, Borehamwood,  
Hertfordshire, WD6 1FE, UK  
Tel: (44) 20 8732 9800  
Fax: (44) 20 8732 9801  
Website: [www.thornlighting.com](http://www.thornlighting.com)

### Australia

Thorn Lighting Pty Limited  
13 Cooper Street, P O Box 188, Smithfield,  
NSW 2164, Australia  
Tel: (61) 2 9604 4300  
Fax: (61) 2 9604 4588  
E-mail: [info@thornlight.com.au](mailto:info@thornlight.com.au)  
Website: [www.thornlight.com.au](http://www.thornlight.com.au)

Thorn DNT Airfield Lighting Pty Limited  
P O Box 548, Unit 2, 7-9 Newcastle Road, Bayswater,  
Melbourne, Victoria 3153, Australia  
Tel: (61) 3 9720 3233  
Fax: (61) 3 9720 8233  
E-mail: [enquiries@thornlight.com.au](mailto:enquiries@thornlight.com.au)  
Website: [www.thornairfield.com](http://www.thornairfield.com)

### Austria

Thorn Licht GmbH  
Donau-City-Straße 11, 1220 Wien, Austria  
Tel: (43) 1 202 66 11  
Fax: (43) 1 202 66 11 12  
E-mail: [office@thorn.at](mailto:office@thorn.at)

### China

Thorn Lighting (Guangzhou) Operations Ltd  
No.12 Lian Yun Road, Eastern Section, GETDD,  
Guangzhou 510760, China  
Tel: (86) 20 3228 2706  
Fax: (86) 20 3228 1777  
E-mail: [sales@thorn.com.cn](mailto:sales@thorn.com.cn)

Thorn Lighting (Tianjin) Co. Ltd  
332 Hongqi Road, Tianjin 300190, China  
Tel: (86) 22 8369 2303  
Fax: (86) 22 8369 2302  
E-mail: [marketing@thornlight.com.cn](mailto:marketing@thornlight.com.cn)

### Czech Republic

Thorn Lighting CS spol. s.r.o.,  
Na Březince 6/930, 150 00 Praha 5  
Czech Republic  
Tel: (420) 224 315 252  
Fax: (420) 233 326 313  
E-mail: [thorn@thornlight.cz](mailto:thorn@thornlight.cz)  
Website: [www.thornlight.cz](http://www.thornlight.cz)

### Denmark

Thorn Lighting A/S  
Albuen 44, 6000 Kolding, Denmark  
Tel: (45) 7696 3600  
Fax: (45) 7696 3601  
Website: [www.thornlight.dk](http://www.thornlight.dk)

### Estonia

Thorn Lighting  
Eesti Filiaal, Tatari 23/25, EE-10116 Tallin, Estonia  
Tel: (372) 656 3505  
Fax: (372) 656 3227  
E-mail: [ando@thorn.ee](mailto:ando@thorn.ee)

### France

Thorn Europhane SA  
156 Boulevard Haussmann,  
Cedex 08, Paris 75379, France  
Tel: (33) 1 49 53 6262  
Fax: (33) 1 49 53 6240  
Website: [www.thorn.fr](http://www.thorn.fr)

Thorn Airfield Lighting  
156 Boulevard Haussmann,  
75379 Paris Cedex 08, France  
Tel: (33) 1 49 53 62 62  
Fax: (33) 1 49 53 62 89  
E-mail: [thornairfield@thorn.fr](mailto:thornairfield@thorn.fr)  
Website: [www.thornairfield.com](http://www.thornairfield.com)

### Hong Kong

Thorn Lighting (Hong Kong) Limited  
Unit 4301, Level 43, Tower 1, Metroplaza,  
223 Hing Fong Road, Kwai Chung, N.T.,  
Hong Kong, China  
Tel: (852) 2578 4303  
Fax: (852) 2887 0247  
E-mail: [info@thorn.com.hk](mailto:info@thorn.com.hk)  
Website: [www.thorn.com.hk](http://www.thorn.com.hk)

### Ireland

Thorn Lighting (Ireland) Limited  
320 Harold's Cross Road, Dublin 6W, Ireland  
Tel: (353) 1 4922 877  
Fax: (353) 1 4922 724  
E-mail: [enq.dublin@thornlight.com](mailto:enq.dublin@thornlight.com)

### Italy

Thorn Europhane Spa  
Via G Di Vittorio, 2, Cadriano di Granarolo,  
Bologna 40057, Italy  
Tel: (39) 051 763391  
Fax: (39) 051 763088  
E-mail: [info@thornlighting.it](mailto:info@thornlighting.it)  
Website: [www.thornlighting.it](http://www.thornlighting.it)

### Latvia

Thorn Lighting  
Representative Office, Skolas Street 21-216,  
Riga LV 1010, Latvia  
Tel: (37) 7 332 660  
Fax: (37) 7 332 660

### Lithuania

Thorn Lighting  
Representative Office, Kalvariju Street 1,  
Vilnius 09310, Lithuania  
Tel: (370) 5 2 750 701  
Fax: (370) 5 2 731 480

### New Zealand

Thorn Lighting (NZ) Ltd  
399 Rosebank Road, P O Box 71134, Rosebank,  
Auckland 7, New Zealand  
Tel: (64) 9 828 7155  
Fax: (64) 9 828 7591

### Norway

Thorn Lighting AS  
Industriveien 11, P O Box 63, Skytta 1483, Norway  
Tel: (47) 6706 2233  
Fax: (47) 6706 0351  
E-mail: [s.kvernberg@thornlight.no](mailto:s.kvernberg@thornlight.no)

### Poland

Thorn Lighting Polska Sp.z o.o.,  
Ul. Gazowa 26A, Wroclaw 50-513, Poland  
Tel: (48) 71 7833 740  
Fax: (48) 71 3366 029  
E-mail: [thorn@thornlight.pl](mailto:thorn@thornlight.pl)  
Website: [www.thornlight.pl](http://www.thornlight.pl)

### Russia

Thorn Lighting  
Novoslobodskaya Str., 21, office 406 Business Center  
"Novoslobodskaya 21", Moscow 103030, Russia  
Tel: (7) 495 981 35 41  
Fax: (7) 495 981 35 42  
E-mail: [office.moscow@thorn.ru](mailto:office.moscow@thorn.ru)  
Website: [www.thorn.ru](http://www.thorn.ru)

Thorn Lighting  
Representative Office, 1 Artilleriyskaya str.,  
1 BC 'Europa House', St Petersburg 191104, Russia  
Tel: (7) 812 718 8112  
Fax: (7) 812 718 8119  
E-mail: [office.petersburg@thorn.ru](mailto:office.petersburg@thorn.ru)  
Website: [www.thorn.ru](http://www.thorn.ru)

### Singapore

Thorn Lighting (Singapore) Pte Ltd  
5 Kaki Bukit Crescent, 04-02 Koyotech Building,  
416238 Singapore  
Tel: (65) 6844 5800  
Fax: (65) 6745 7707  
E-mail: [info@thornlight.com.sg](mailto:info@thornlight.com.sg)  
Website: [www.thornlight.com.sg](http://www.thornlight.com.sg)

### Sweden

Thorn Lighting AB  
Industrigatan, Box 305,  
SE-261 23 Landskrona, Sweden  
Tel: (46) 418 520 00  
Fax: (46) 418 265 74  
E-mail: [thorn@thornlight.se](mailto:thorn@thornlight.se)  
Website: [www.thornlight.se](http://www.thornlight.se)

### United Arab Emirates

Thorn Lighting Ltd Dubai  
Al Shoala Building, Office 301, Block E,  
P O Box 1200, Deira, Dubai, UAE  
Tel: (971) 4 2940181  
Fax: (971) 4 2948838  
E-mail: [tluae@emirates.net.ae](mailto:tluae@emirates.net.ae)

### Thorn Gulf LLC

Al Shoala Building, Office 301/2,  
Block E, PO Box 1200, Deira, Dubai, UAE  
Tel: (971) 4 2948938  
Fax: (971) 4 2948838  
E-mail: [thorg@emirates.net.ae](mailto:thorg@emirates.net.ae)

### United Kingdom

Thorn Lighting Limited  
Silver Screens, Elstree Way,  
Borehamwood, Hertfordshire, WD6 1FE, UK  
Tel: (44) 20 8732 9800  
Fax: (44) 20 8732 9801  
E-mail: [brochures@thornlight.com](mailto:brochures@thornlight.com)  
Website: [www.thornlighting.co.uk](http://www.thornlighting.co.uk)

### Thorn Airfield Lighting

Silver Screens, Elstree Way,  
Borehamwood, Hertfordshire, WD6 1FE, UK  
Tel: (44) 20 8732 9804  
Fax: (44) 1708 776 285  
E-mail: [airfield@thornlight.com](mailto:airfield@thornlight.com) or [thornagluk@aol.com](mailto:thornagluk@aol.com)  
Website: [www.thornairfield.com](http://www.thornairfield.com)

### International Sales

Thorn Lighting Limited  
156 Boulevard Haussmann,  
Cedex 08, Paris 75379, France  
Tel: (33) 1 49 53 6262  
Fax: (33) 1 49 53 6240

### Thorn Lighting Limited

Silver Screens, Elstree Way, Borehamwood,  
Hertfordshire, WD6 1FE, UK  
Tel: (44) 20 8732 9802  
Fax: (44) 1708 741 827  
E-mail: [international.sales@thornlight.com](mailto:international.sales@thornlight.com)

### [www.thornlighting.com](http://www.thornlighting.com)

# THORN

Thorn Lighting is constantly developing and improving its products. All descriptions, illustrations, drawings and specifications in this publication present only general particulars and shall not form part of any contract. The right is reserved to change specifications without prior notification or public announcement. All goods supplied by the company are supplied subject to the company's General Conditions of Sale, a copy of which is available on request. All measurements are in millimetres and weights in kilograms unless otherwise stated.

**Publication No: 376 (INT) Publication Date: 07/06**