

sensio head office tel: +44 (0)845 0340 780
sensio head office fax: +44 (0)845 0340 781
email: info@sensio.co.uk
web: www.sensio.co.uk

Sensio House, Unit 6, Lister Park, Green Lane, Featherstone, Pontefract, WF7 6FE

Registered No. 2097787

HIGH DEFINITION LED LIGHTING

minimum energy, maximum output

sensio[®]
furniture lighting solutions

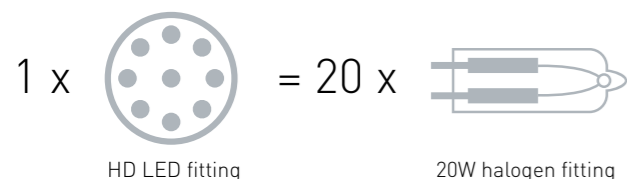
EDITION NUMBER 01

“ HD LED minimum energy maximum output ”

HD LED – the next generation of LED

HD LEDs have a very high light output, each fitting producing the equivalent to around 45W of halogen. The High Density LED range use energy efficient technology and with a low power consumption of less than 1.7W per fitting, you save up to 80% power and even more £'s by moving from conventional halogen lighting to HD LED.

Lamp Life – Comparing HD LED to halogen lighting:



Save energy, save money!

Save £55.98 per year on electricity and replacement lamps.*

High Performance HD LED

HD LED offers even better performance than standard LED – the light emitting diode has truly come of age. This cost-effective and energy saving range from Sensio has been specially designed for use in the kitchen to produce the brightest light output while reducing your energy bills!

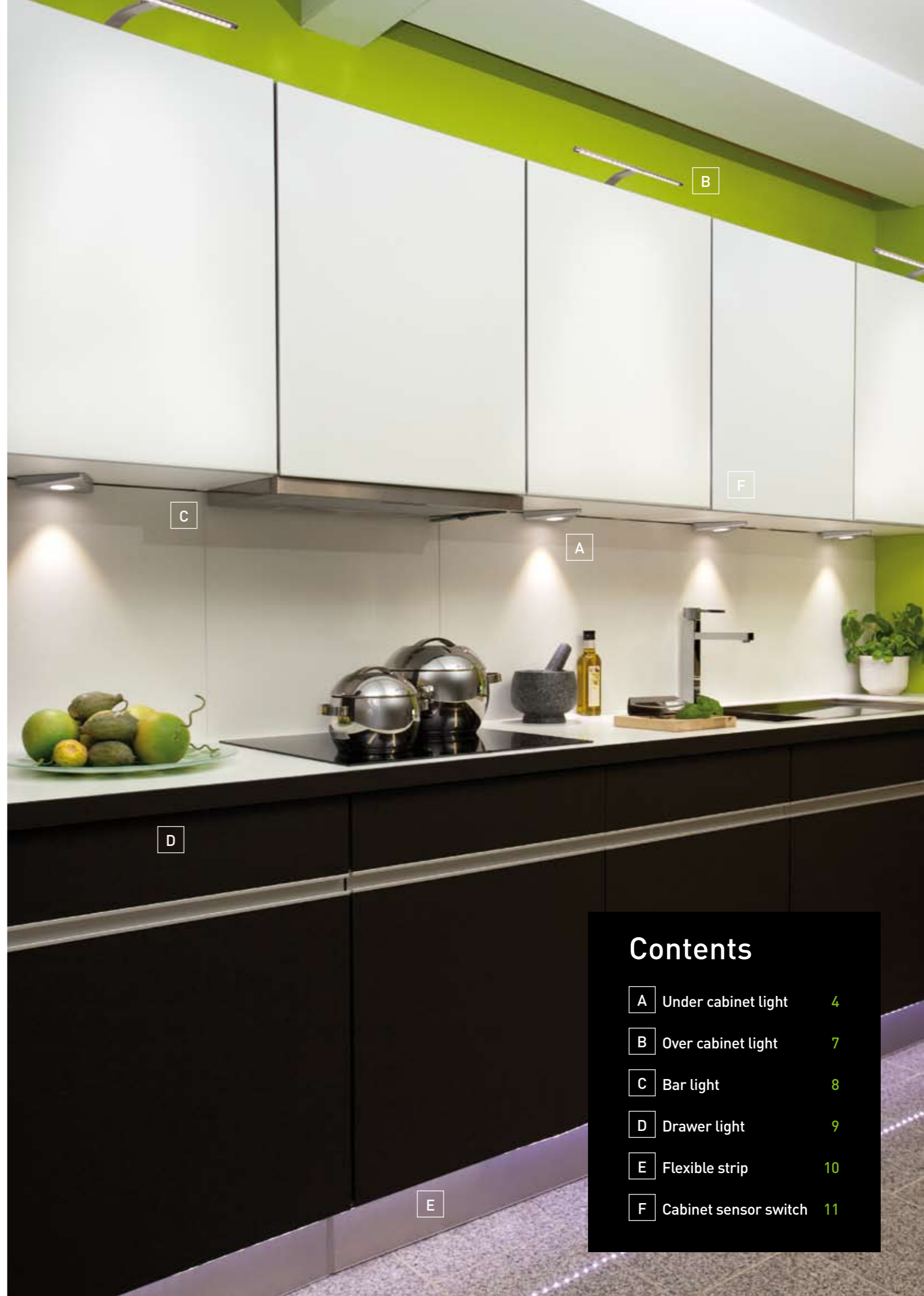
* Saving based on £0.15 per kWh, when 8 HD lights are used for 5 hours per day (60,000 / 3,000 = 20 lamps) 20W Halogen lamps with 3,000 hours at £0.90 each.



Available with movement sensor

Why convert to HD LED lighting in your kitchen?

- Energy saving**
HD LEDs have a low power consumption (1.7W as standard) and use 80% less power than conventional halogen lighting.
- Brightest light output**
HD LEDs have a high light output equivalent to 45W of halogen while producing a massive saving in £'s.
- Long life**
LEDs have a life span of around 60,000 hours compared to 3,000 hours with conventional halogen lighting.
- Replacement lamps**
The long life span of HD LEDs means they will ultimately out live your kitchen – saving you time, money and hassle with replacement lamps.
- Massive cost saving**
With a low power consumption, high light output and long life span, HD LED will reduce your monthly energy bills by £'s!
- Innovative sensor**
Selected HD LED fitting include an infra-red sensor switch – ideal to maintain hygiene and ease of activation compared to touching light switches!
- All-round kitchen range**
The HD LED range is comprised of fittings specially designed to provide practical task lighting, interior cabinet lighting, convenient drawer lighting, plinth lighting or overall stunning effect lighting.
- Safe**
Guaranteed highest safety as LEDs do not overheat and have zero output ultra-violet radiation compared to that of conventional halogen lighting.
- Colour changing**
The HD LED range includes fittings which have a spectrum of seamless colour changes, ideal for mood and effect lighting.



Contents		
A	Under cabinet light	4
B	Over cabinet light	7
C	Bar light	8
D	Drawer light	9
E	Flexible strip	10
F	Cabinet sensor switch	11



Tri Light (without sensor) Tri Light (with sensor)

Features

FINISH

Aluminium effect case with aluminium lamp

SPECIFICATION

- Ultra thin fitting with 20mm depth
- Low power consumption 1.65W without sensor, 2.15W with sensor / 24V
- Light output equivalent to 40W halogen
- 60,000 hour lamp life
- 24 white LED diodes
- Lumen output (at 6400k): 70Lm
- Beam angle 30°
- 2.5m cable included
- Available with or without a sensor
- Packed sets with 2 or 3 lights includes driver
- For single lights order driver separately (see below)
- Fixing pack included with double sided adhesive pad.
- Cool White LED

Dimensions

L140 x W140 x D20mm

Order code

SE9001HD – light only (without sensor)

SE9001HDK2 – two pack with driver

SE9001HDK3 – three pack with driver

SE9001HDS – light only (with sensor)

SE9001HDSK2 – two pack with driver (with sensor)

SE9001HDSK3 – three pack with driver (with sensor)

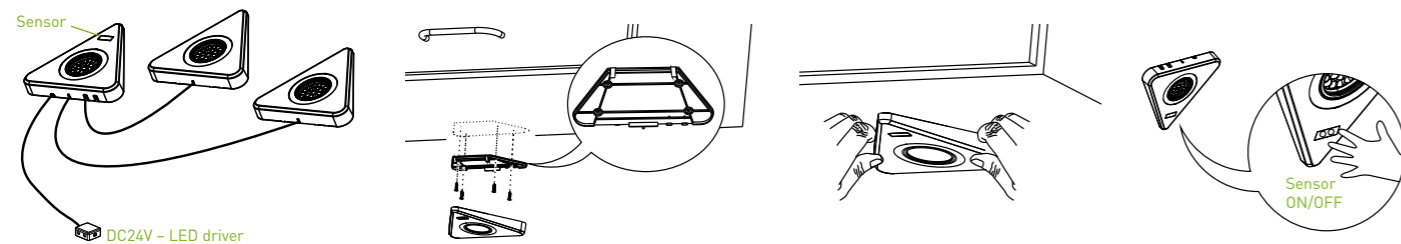
240 / 24V driver with 1.5m bare ended mains cable

SE40555 – 15W with 6 way distribution block (max 6 fittings)

SE40556 – 30W with 12 way distribution block (max 12 fittings)

SE9009 – 2.5m extension cable

Installation



An ideal energy saving solution to illuminate the kitchen worktop



Ideal to provide task lighting in a kitchen



Convenient built-in motion sensor



Features

FINISH

Aluminium effect

SPECIFICATION

- Ultra thin fitting with 6mm depth
- Low power consumption 1.25W / 24V
- Light output equivalent to 20W halogen
- 60,000 hour lamp life
- 18 white diodes
- Lumen output (at 5000k): 70Lm
- Beam angle 60°
- 2.5m cable included
- All lights require driver – order separately (see below)
- Fixing pack included with double sided adhesive pad
- Cool White LED

Dimensions

L65 x W65 x D6mm

Order code

SE9007HD – light only

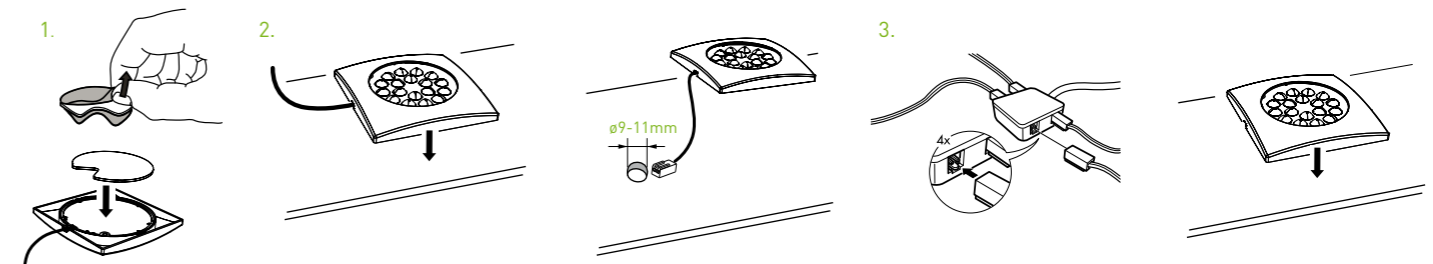
240 / 24V driver with 1.5m bare ended mains cable

SE40555 – 15W with 6 way distribution block (max 6 fittings)

SE40556 – 30W with 12 way distribution block (max 12 fittings)

SE9009 – 2.5m extension cable

Installation



Suitable for surface mounting under cabinets



Fitting provides high brightness ideal for task lighting



Recessed light

Surface light

Features

FINISH

Aluminium

SPECIFICATION

- Compact and discreet only 10.5mm in depth
- Low power consumption 1.7W / 24V
- Light output equivalent to 40W halogen
- 60,000 hour lamp life
- 24 white LED diodes
- Lumen output (at 6400k): 70Lm
- Beam angle 30°
- 2.5m cable included
- Each fitting supplied with collar
- All lights require driver – order separately (see below)
- Fixing pack included with double sided adhesive pad
- Cool White LED

Dimensions

W65.5 x D10.5mm
Hole cut dimensions 60mm

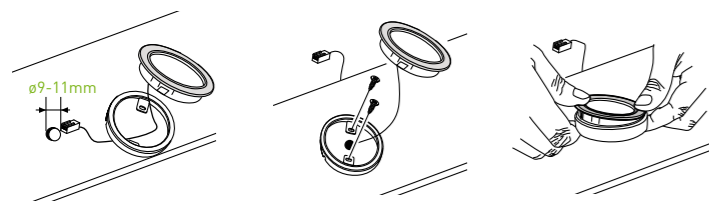
Order code

SE9005HD – light with collar

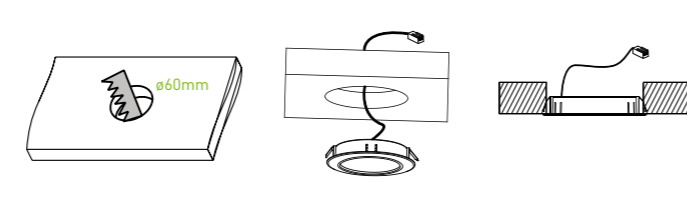
240 / 24V driver with 1.5m bare ended mains cable
SE40555 – 15W with 6 way distribution block (max 6 fittings)
SE40556 – 30W with 12 way distribution block (max 12 fittings)
SE9009 – 2.5m extension cable

Installation

MOUNTED WITH SURFACE RING



DIRECT MOUNT, WHOLLY RECESSED



Recessed light



Surface light



Suitable to illuminate kitchen worktops



Features

FINISH

Aluminium effect

SPECIFICATION

- Adjustable head
- Low power consumption 1.65W / 24V
- 60,000 hour lamp life
- 24 white diodes
- Lumen output (at 6400k): 60Lm
- 2.5m cable included
- All lights require driver – order separately (see below)
- Fixing pack included
- Cool White LED

Dimensions

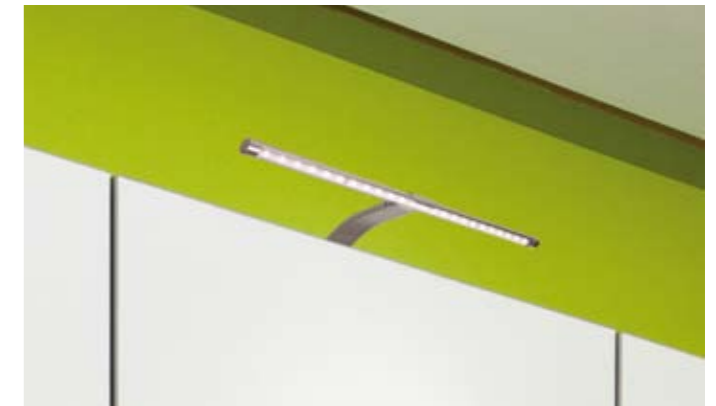
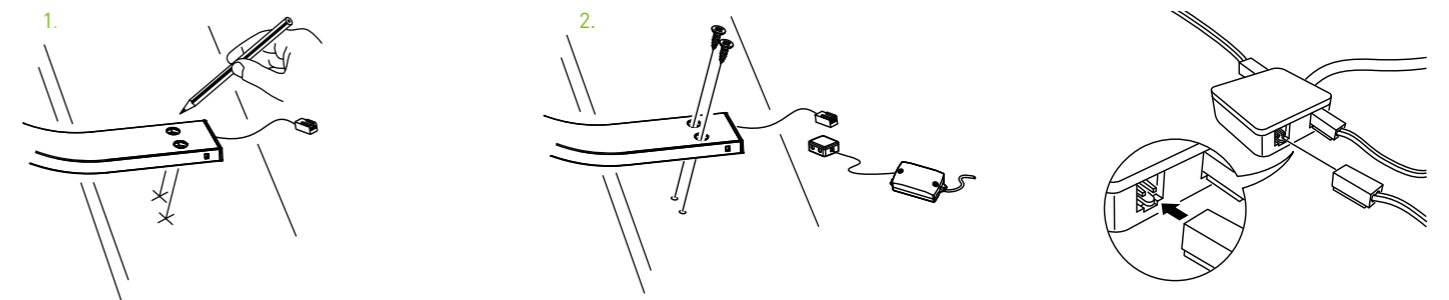
L250 x W340 x D15mm

Order code

SE9015HD – light only

240 / 24V driver with 1.5m bare ended mains cable
SE40555 – 15W with 6 way distribution block (max 6 fittings)
SE40556 – 30W with 12 way distribution block (max 12 fittings)
SE9009 – 2.5m extension cable

Installation



Specially designed to illuminate the inside of a cabinet



Ultra-thin design



Convenient adjustable head

HD LED bar light with sensor



Features

FINISH
Aluminium

SPECIFICATION

- Sleek and discreet – sits flush under cabinets
- Includes built in sensor
- Low power consumption 5.4W per unit
- Light output 40W per fitting
- 60,000 hour lamp life
- 24 white diodes per lamp
- Lumen output (at 6400k): 210Lm
- Beam angle 30°
- 2.5m cable included with 13A plug pre wired
- Integrated LED driver
- Fixing pack included
- Cool White LED

Dimensions

L750 x W68 x D15mm

Order code

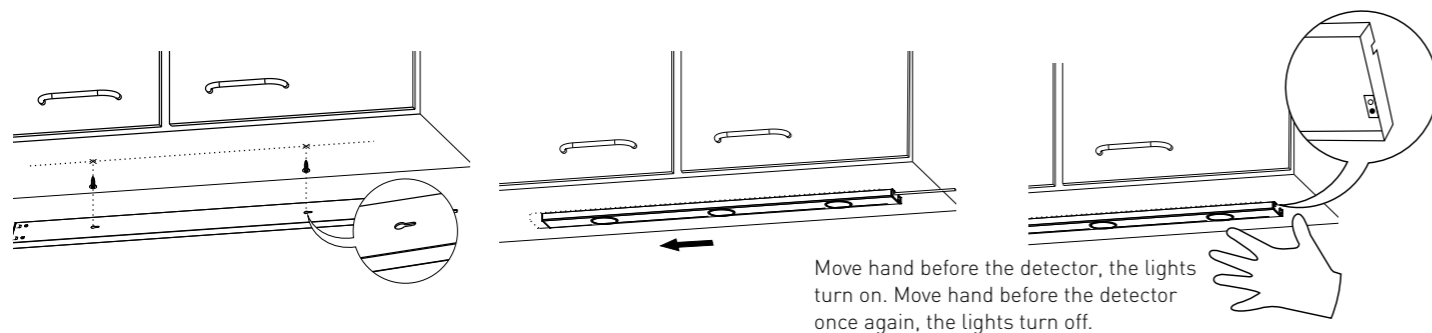
SE9020HD – light only



Suitable for use under kitchen cabinets



Installation



HD LED battery operated drawer light

08—09



Features

FINISH
Aluminium effect finish

SPECIFICATION

- Battery operated – easy installation, no wires
- Includes built in sensor with Monostable and Bistable functions
- Low power consumption 0.3W
- Powered by 4 x AAA batteries (batteries not included) – last for 1.5 years when used for 3 minutes per day
- 40,000 hour lamp life
- Beam angle 80°
- Attach with double sided tape or screws
- Detector range 5-10cm

Dimensions

L303 x W17 x D14mm

Order code

SE9030HD – light only



Designed to illuminate drawers



Ultra-thin battery operated drawer light

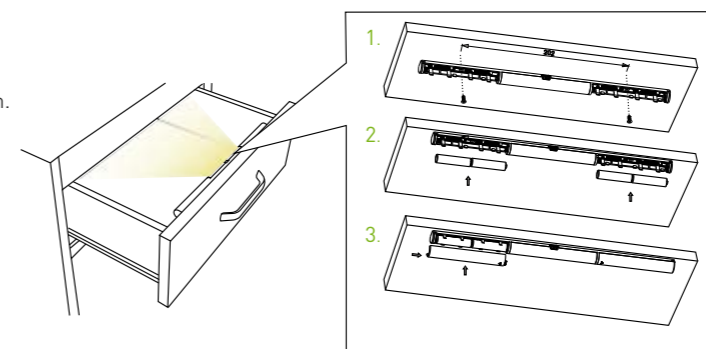


Easy to install with 4x AAA batteries

Installation

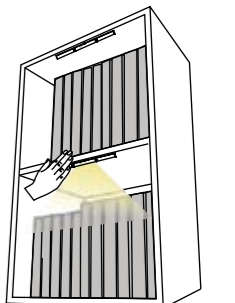
MONOSTABLE

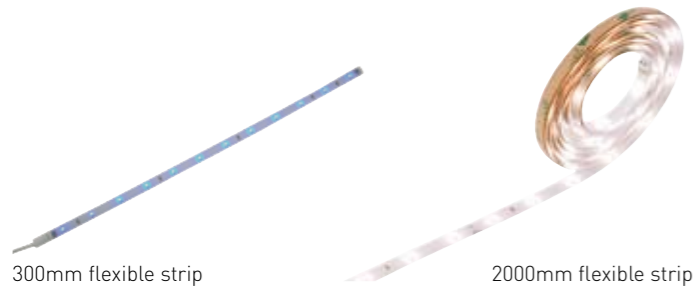
1. If mounted inside a drawer, select the monostable function.
2. Open the drawer, lights turn on.
3. Close the drawer, the lights turn off.



BISTABLE

1. If mounted outside a drawer, select the bistable function.
2. Move hand before the detector, the lights turn on.
3. Move hand before the detector once again, the lights turn off.





Features

SPECIFICATION

- Linear flexible LED strip
- Quick and easy to install
- Includes double sided tape on reverse
- Strip can be cut every 50mm
- Extremely low power consumption 0.8W per 300mm strip
- 50,000 hours lamp life
- All lights require driver and cables – order separately (see below)
- Low power consumption of 5W per 2000mm strip
- 12 SMD LEDs per 300mm strip
- 72 SMD LEDs per 2000mm strip
- No UV/IR radiation
- Luminous Flux 25Lm

Dimensions

300mm – L300 x W8 x D6mm
2000mm – L2000 x W8 x D6mm

Order code

Strips

SE10310 – LED Flexible Strip – 300mm
SE10311 – LED Flexible Strip – 2000mm

Drivers

SE40525 – 15W LED driver with 6 LED port
(max 18 fittings – 300mm / 3 fittings – 2000mm)
SE40526 – 30W LED driver with 12 LED port
(max 36 fittings – 300mm / 6 fittings – 2000mm)

Cables

SE10314 – Driver connector cable 2.5m
SE10315 – Inter connecting cable 500mm
SE10316 – Corner connector 50mm
SE10317 – Inter connecting cable 1.5m
SE10318 – LED flexible T-shape strip

LED colours – WH (white), WW (warm white), BL (blue)



SE10318 – LED flexible T-shape strip



Ideal for plinth lighting

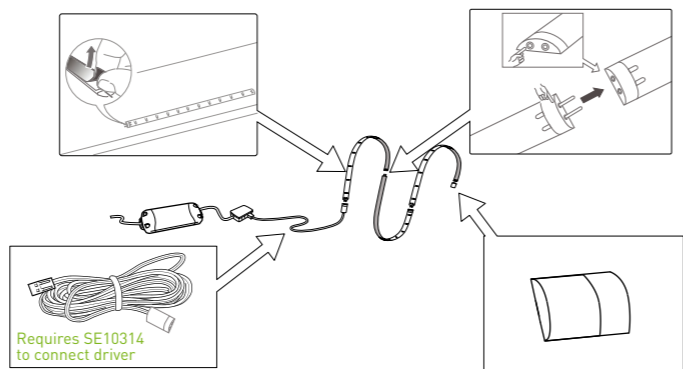


Provides a modern effect light



Self adhesive flexible strip for easy installation

Installation



Features

- Use with HD LED fittings or LED strip lighting
- Very small and discreet
- Sensor acts as an on / off switch for all fittings connected
- Monostable and bistable functions
- Surface mount using the self adhesive pad provided
- Detection range of 5cm
- Can be recessed or surface mounted
- Has a small indent / pin on the back of the switch, press this once to change the function of the sensor switch
- Comes with 1.5m of cable attached and a 4 way junction box connected to the end of the cable
- Fixing pack included with double sided adhesive pad
- Maximum load 12V / 15W
- Suitable for 12V and 24V products

Dimensions

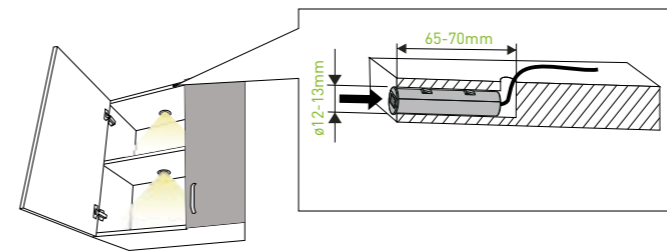
L63 x D11mm [surface] / 14mm [recessed]
Hole cut dimensions 14mm

Order code

SE40516 – HD LED cabinet switch

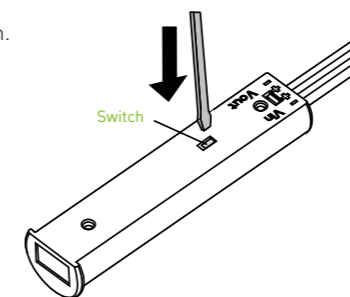
Monostable

1. If mounted behind a door select the monostable function.



Function set

1. Connect with the power supply, then set the function.
2. Push the switch, change into bistable function from monostable function, or change into monostable from bistable function.



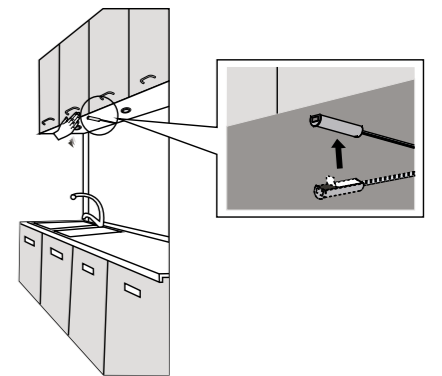
Recess into the pelmet to act as an on / off switch. Simply open the door to activate the cabinet light and close the door to turn the light off.



Mounts very discretely on the underside or inside of a kitchen unit. Sensor switch will be activated when a hand passes before it.

Bistable

1. If mounted outside a drawer, select the bistable function.
2. Move hand before the detector, the lights turn on.
3. Move hand before the detector once again, the lights turn off.



Installation

