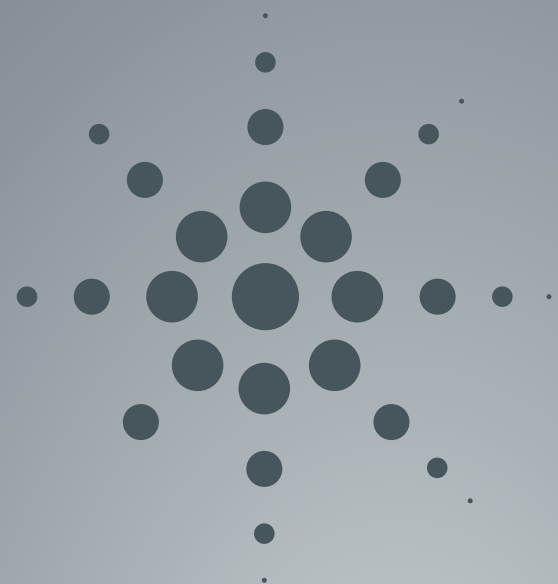


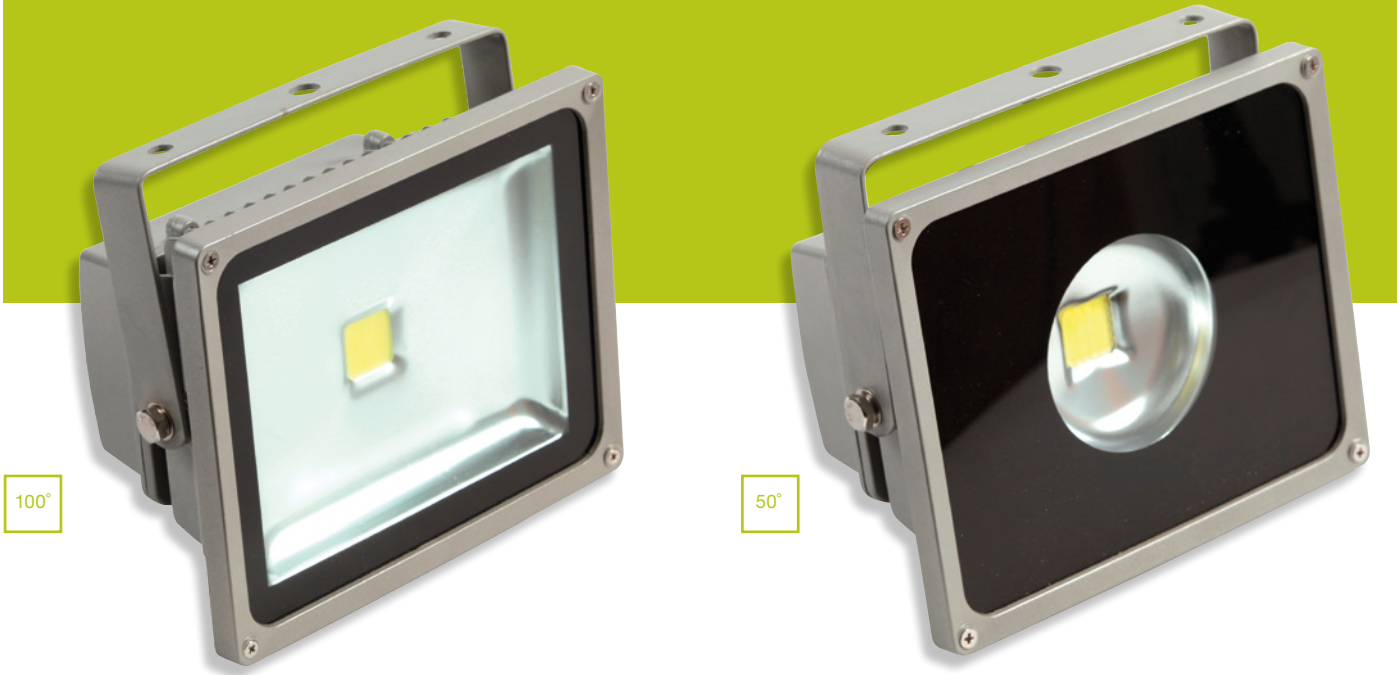
NEXT NRG



LED LIGHTS



Flood Light



PRODUCT CODE	W	V	Lm		>%		CCT	life>	kg
FL-20W/100° NX-61210	20 W	85V-265V 50~60Hz	1200Lm	225x185x126 mm	>90%	100° & 50°	5500K	>50 000Hrs	2.3kgs
FL-20W/50° NX-61205									
FL-30W/100° NX-61310	30 W	85V-265V 50~60Hz	1800Lm	225x185x126 mm	>90%	100° & 50°	5500K	>50 000Hrs	2.3kgs
FL-30W/50° NX-61305									
FL-50W/100° NX-61510	50 W	85V-265V 50~60Hz	3000Lm	290x236x183 mm	>90%	100° & 50°	2700 - 7000K	>50 000Hrs	3.3kgs
FL-50W/50° NX-61505									

info@nextnrg.eu | www.nextnrg.eu

NextNRG H. K. Limited
 19th Floor | Seaview Commercial Building
 21/24 Connaught Road West – Hong Kong SAR
 T: +852 2815 9988 | F: +852 2805 2556



Slovakia
 Jasná 9 | 821 04 | Bratislava | Slovakia
 T/F: +421 2 4363 2808

Brazil
 R. Jose dos Santos Junior 574
 Brooklin Paulista - Cep: 04609-010 - Sao Paulo (SP)
 T/F: +55 11 5049 0058



Flood Light



PRODUCT CODE	W	V	Lm		>%		CCT	life>	kg
FL-60W/65° NX-61665	60 W	85V-265V 50~60Hz	3600Lm	258x360x110 mm	>90%	65°	5500K	>50 000Hrs	6,5kgs
FL-80W/65° NX-61865	80 W	85V-265V 50~60Hz	4800Lm	258x360x110 mm	>90%	65°	5500K	>50 000Hrs	6,5kgs
Mini FL-5W NX-61005	5 W	85V-265V 50~60Hz	300Lm	115x85x85 mm	>90%	65°	5500K	>50 000Hrs	0,6kgs
Mini FL-10W NX-61010	10 W	85V-265V 50~60Hz	600Lm	115x85x85 mm	>90%	65°	5500K	>50 000Hrs	0,6kgs

info@nextnrg.eu | www.nextnrg.eu

NextNRG H. K. Limited
19th Floor | Seaview Commercial Building
21/24 Connaught Road West – Hong Kong SAR
T: +852 2815 9988 | F: +852 2805 2556

Slovakia
Jasná 9 | 821 04 | Bratislava | Slovakia
T/F: +421 2 4363 2808

Brazil
R. Jose dos Santos Junior 574
Brooklin Paulista - Cep: 04609-010 - Sao Paulo (SP)
T/F: +55 11 5049 0058

Street Light



PRODUCT
CODE

W	V	Lm	↕	>%	∧°	CCT	CRI	IP	life>	kg
---	---	----	---	----	----	-----	-----	----	-------	----

XL1-10W/HP LED NX-7110	10 W	85V-265V 50~60Hz	800Lm	550x250x140 mm	>90%	65°	2700 - 7000K	CRI: >80	IP65	>50 000Hrs	5,6 kgs
XL1-15W/HP LED NX-7115	15 W	85V-265V 50~60Hz	1200Lm	550x250x140 mm	>90%	65°	2700 - 7000K	CRI: >80	IP65	>50 000Hrs	5,6 kgs
XL1-18W/HP LED NX-7118	18 W	85V-265V 50~60Hz	1440Lm	550x250x140 mm	>90%	65°	2700 - 7000K	CRI: >80	IP65	>50 000Hrs	5,6 kgs
XL1-20W/HP LED NX-7120	20 W	85V-265V 50~60Hz	1600Lm	550x250x140 mm	>90%	65°	2700 - 7000K	CRI: >80	IP65	>50 000Hrs	5,6 kgs

info@nextnrg.eu | www.nextnrg.eu

NextNRG H. K. Limited
19th Floor | Seaview Commercial Building
21/24 Connaught Road West – Hong Kong SAR
T: +852 2815 9988 | F: +852 2805 2556

Slovakia
Jasná 9 | 821 04 | Bratislava | Slovakia
T/F: +421 2 4363 2808

Brazil
R. Jose dos Santos Junior 574
Brooklin Paulista - Cep: 04609-010 - Sao Paulo (SP)
T/F: +55 11 5049 0058

Street Light



PRODUCT CODE

W	V	Lm	↕	>%	∠	CCT	CRI	IP	life>	kg
---	---	----	---	----	---	-----	-----	----	-------	----

XL3-80W/HP LED NX-7308	80 W	85V-265V 50~60Hz	6400Lm	800x320x172 mm	>90%	65°	2700 - 7000K	CRI: >80	IP65	>50 000Hrs	12 kgs
XL3-90W/HP LED NX-7309	90 W	85V-265V 50~60Hz	7200Lm	800x320x172 mm	>90%	65°	2700 - 7000K	CRI: >80	IP65	>50 000Hrs	12 kgs
XL3-100W/HP LED NX-7310	100 W	85V-265V 50~60Hz	8000Lm	800x320x172 mm	>90%	65°	2700 - 7000K	CRI: >80	IP65	>50 000Hrs	12 kgs
XL3-120W/HP LED NX-7312	120 W	85V-265V 50~60Hz	9600Lm	800x320x172 mm	>90%	65°	2700 - 7000K	CRI: >80	IP65	>50 000Hrs	12 kgs
XL3-140W/HP LED NX-7314	140 W	85V-265V 50~60Hz	11200Lm	800x320x172 mm	>90%	65°	2700 - 7000K	CRI: >80	IP65	>50 000Hrs	12 kgs
XL3-150W/HP LED NX-7315	150 W	85V-265V 50~60Hz	12000Lm	800x320x172 mm	>90%	65°	2700 - 7000K	CRI: >80	IP65	>50 000Hrs	12 kgs
XL3-160W/HP LED NX-7316	160 W	85V-265V 50~60Hz	12800Lm	800x320x172 mm	>90%	65°	2700 - 7000K	CRI: >80	IP65	>50 000Hrs	12 kgs

info@nextnrg.eu | www.nextnrg.eu

NextNRG H. K. Limited
19th Floor | Seaview Commercial Building
21/24 Connaught Road West – Hong Kong SAR
T: +852 2815 9988 | F: +852 2805 2556

Slovakia
Jasná 9 | 821 04 | Bratislava | Slovakia
T/F: +421 2 4363 2808

Brazil
R. Jose dos Santos Junior 574
Brooklin Paulista - Cep: 04609-010 - Sao Paulo (SP)
T/F: +55 11 5049 0058

Pendant Light



PRODUCT CODE

	W	V	Lm	↕	>%	∧°	CCT	°C	life>	kg
PL-50W/65° NX-35050	50 W	85V-265V 50~60Hz	5000Lm	500x500x380 mm	>90%	65°	2700 - 7000K	-40°C +55°C	>50 000Hrs	5,0 kgs
PL-80W/65° NX-35080	80 W	85V-265V 50~60Hz	8000Lm	500x500x380 mm	>90%	65°	2700 - 7000K	-40°C +55°C	>50 000Hrs	5,5 kgs
PL-100W/65° NX-35100	100 W	85V-265V 50~60Hz	10000Lm	500x500x380 mm	>90%	65°	2700 - 7000K	-40°C +55°C	>50 000Hrs	6,0 kgs

info@nextnrg.eu | www.nextnrg.eu



NextNRG H. K. Limited
19th Floor | Seaview Commercial Building
21/24 Connaught Road West – Hong Kong SAR
T: +852 2815 9988 | F: +852 2805 2556

Slovakia
Jasná 9 | 821 04 | Bratislava | Slovakia
T/F: +421 2 4363 2808

Brazil
R. Jose dos Santos Junior 574
Brooklin Paulista - Cep: 04609-010 - Sao Paulo (SP)
T/F: +55 11 5049 0058

Panel Light



PRODUCT CODE

W	V	Lm	>%				CCT	°C	life>	kg
----------	----------	-----------	--------------	--	--	--	------------	-----------	-----------------	-----------

CL - 28W NX-45128	28 W	100V-277V	2000/2500 Lm	>90%	600x600x10 mm	480LED's	160°	2600 - 3700K 5000 - 7000K	-40°C +55°C	>50 000Hrs	4,8 kgs
-----------------------------	------	-----------	-----------------	------	------------------	----------	------	------------------------------	----------------	------------	---------

Ceiling Light



PRODUCT CODE

W	V	Lm			CCT	life>
----------	----------	-----------	--	--	------------	-----------------

CL-41-1/3W BL-41-1-3	3 W	100V-277V	150Lm	ø65x51	Direct	2600-3700K 4000-4800K 5000-6500K 6500-7500K	>50 000Hrs
--------------------------------	-----	-----------	-------	--------	--------	--	------------

CL-41-1/6W BL-41-1-6	3x2 W	100V-277V	350Lm	ø88x72	Direct	2600-3700K 4000-4800K 5000-6500K 6500-7500K	>50 000Hrs
--------------------------------	-------	-----------	-------	--------	--------	--	------------

CL-41-1/9W BL-41-1-9	3x3 W	100V-277V	800Lm	ø88x72	Direct	2600-3700K 4000-4800K 5000-6500K 6500-7500K	>50 000Hrs
--------------------------------	-------	-----------	-------	--------	--------	--	------------

info@nextnrg.eu | www.nextnrg.eu

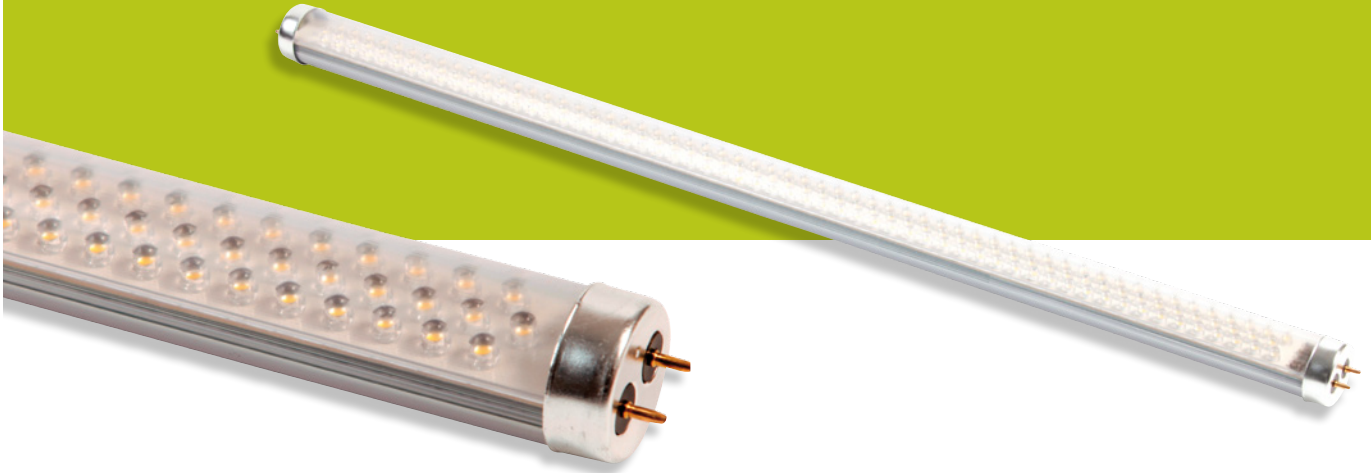


NextNRG H. K. Limited
19th Floor | Seaview Commercial Building
21/24 Connaught Road West – Hong Kong SAR
T: +852 2815 9988 | F: +852 2805 2556

Slovakia
Jasná 9 | 821 04 | Bratislava | Slovakia
T/F: +421 2 4363 2808

Brazil
R. Jose dos Santos Junior 574
Brooklin Paulista - Cep: 04609-010 - Sao Paulo (SP)
T/F: +55 11 5049 0058

Tube Light



PRODUCT CODE



PRODUCT CODE	W	V	Lm	Fluorescent/LED	Tube Size	LED's	Beam angle	CCT	CRI	°C	life>
TL/T8-8.5W/60 NX-55806	8.5 W	AC 90-140V DC 185-265V (50-60Hz)	935Lm	18W T8 Fluorescent	T8/T10/60cm	144 LED's	110°	2800 - 3300K 3800 - 4300K 5800 - 6500K	>85%	-20°C + 45°C	>50 000Hrs
TL/T8-13.5W/120 NX-55812	13.5 W	AC 90-140V DC 185-265V (50-60Hz)	1485Lm	36W T8 Fluorescent	T8/T10/120cm	225 LED's	110°	2800 - 3300K 3800 - 4300K 5800 - 6500K	>80%	-20°C + 45°C	>50 000Hrs

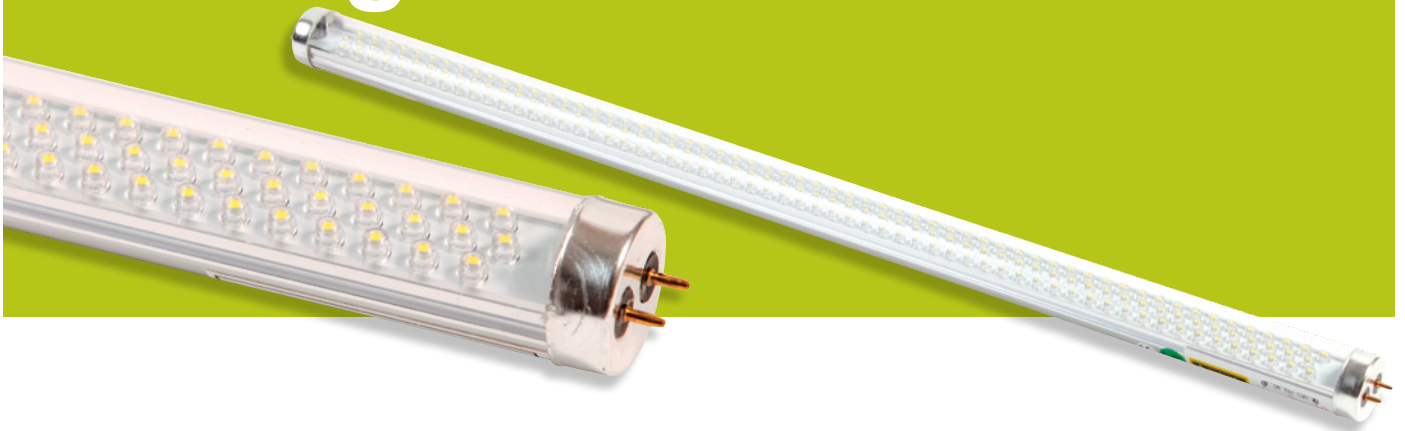
info@nextnrg.eu | www.nextnrg.eu

NextNRG H. K. Limited
19th Floor | Seaview Commercial Building
21/24 Connaught Road West – Hong Kong SAR
T: +852 2815 9988 | F: +852 2805 2556

Slovakia
Jasná 9 | 821 04 | Bratislava | Slovakia
T/F: +421 2 4363 2808

Brazil
R. Jose dos Santos Junior 574
Brooklin Paulista - Cep: 04609-010 - Sao Paulo (SP)
T/F: +55 11 5049 0058

Tube Light



PRODUCT CODE



PRODUCT CODE	W	V	Lm	Fluorescent	Length	LED's	Beam angle	CCT	CRI	°C	life>
TL/MT5-9W/60 NX-56506	9 W	100V-277V AC/DC 12V	600Lm	25W T5 Fluorescent	T5/60cm	120 LED's	160°	2600 - 3700K 5000 - 7000K	>80%	-20°C + 45°C	>50 000Hrs
TL/MT5-11W/90 NX-57509	11 W	100V-277V AC/DC 12V	800Lm		T5/90cm	150 LED's	160°	2600 - 3700K 5000 - 7000K	>80%	-20°C + 45°C	>50 000Hrs
TL/MT5-16W/120 NX-57512	16 W	100V-277V AC/DC 12V	1200Lm	45W T5 Fluorescent	T5/120cm	210 LED's	160°	2600 - 3700K 5000 - 7000K	>80%	-20°C + 45°C	>50 000Hrs
TL/MT8-8W/60 NX-57806	8 W	100V-277V AC/DC 12V	960Lm	18W T8 Fluorescent	T8/60cm	180 LED's	60° 120°	3000 - 3500K 4000 - 4500K 5800 - 6500K	>90%	-20°C + 45°C	>50 000Hrs
TL/MT8-15W/120 NX-57812	15 W	100V-277V AC/DC 12V	1800Lm	36W T8 Fluorescent	T8/120cm	300 LED's	60° 120°	3000 - 3500K 4000 - 4500K 5800 - 6500K	>80%	-20°C + 45°C	>50 000Hrs
TL/MT8-19W/150 NX-57815	19 W	100V-277V AC/DC 12V	2280Lm	58W T8 Fluorescent	T8/150cm	360 LED's	60° 90°- 120° 160°	3000 - 3500K 4000 - 4500K 5800 - 6500K	>80%	-20°C + 45°C	>50 000Hrs
TL/MT8-22W/180 NX-57818	22 W	100V-277V AC/DC 12V	2640Lm		T8/180cm	420 LED's	60° 90°- 120° 160°	3000 - 3500K 4000 - 4500K 5800 - 6500K	>80%	-20°C + 45°C	>50 000Hrs

info@nextnrg.eu | www.nextnrg.eu



NextNRG H. K. Limited
 19th Floor | Seaview Commercial Building
 21/24 Connaught Road West – Hong Kong SAR
 T: +852 2815 9988 | F: +852 2805 2556

Slovakia
 Jasná 9 | 821 04 | Bratislava | Slovakia
 T/F: +421 2 4363 2808

Brazil
 R. Jose dos Santos Junior 574
 Brooklin Paulista - Cep: 04609-010 - Sao Paulo (SP)
 T/F: +55 11 5049 0058



Bulb Light

	PRODUCT CODE	W	Lm		V		CCT	
	Bulb light BL-11-1-1.2	1.2 W	70 Lm	E14 E27	AC 120-240V	160°	WW NW DW CW	ø42x133
	Bulb light BL-12-1-3	3 W	120 Lm	E27 BC	AC 85-265V	180°	WW NW DW CW	ø50x82
	Bulb light BL-12-2-3	3 W	120 Lm	E27 BC	AC 85-265V	180°	WW NW DW CW	ø50x92
	Bulb light BL-13-1-6	6 W	400 Lm	E14 E27	AC 85-265V	120°	WW NW DW CW	ø70x122
	Bulb light BL-13-2-3	3 W	240 Lm	E27	AC 85-265V 50-60Hz	160°	WW NW DW CW	ø60x135

info@banana-light.com | www.banana-light.com



NextNRG H. K. Limited

19th Floor | Seaview Commercial Building
21/24 Connaught Road West – Hong Kong SAR
T: +852 2815 9988 | F: +852 2805 2556

Slovakia

Jasná 9 | 821 04 | Bratislava | Slovakia
T/F: +421 2 4363 2808

Brazil

R. Jose dos Santos Junior 574
Brooklin Paulista - Cep: 04609-010 - Sao Paulo (SP)
T/F: +55 11 5049 0058

Bulb Light

	PRODUCT CODE	W	Lm		V		CCT	
	Bulb light BL-13-2-5	5W	400 Lm	E27	AC 85-265V 50-60Hz	160°	WW NW DW CW	ø60x107
	Bulb light BL-13-2-6	6 W	600 Lm	E27	AC 120-240V	160°	WW	ø60x115
	Bulb light BL-13-3-5	5 W	300 Lm	E27	AC 240V 50-60Hz	180°	WW DW	ø55x105
	Bulb light BL-13-4-5	5 W	350 Lm	E27	AC 220-240V	300°	WW DW	ø65x100
	Bulb light BL-13-4-8	8 W	550 Lm	E27	AC 220-240V	300°	WW DW	ø70x100

info@banana-light.com | www.banana-light.com



NextNRG H. K. Limited

19th Floor | Seaview Commercial Building
21/24 Connaught Road West – Hong Kong SAR
T: +852 2815 9988 | F: +852 2805 2556







Slovakia

Jasná 9 | 821 04 | Bratislava | Slovakia
T/F: +421 2 4363 2808

Brazil

R. Jose dos Santos Junior 574
Brooklin Paulista - Cep: 04609-010 - Sao Paulo (SP)
T/F: +55 11 5049 0058

Bulb Light

	PRODUCT CODE	W	Lm		V		CCT	
	Bulb light BL-14-1-4.5	4.5 W	350 Lm	E27 BC	AC 85-265V	180°	WW NW DW CW	ø16x62
	Bulb light BL-14-1-8	8 W	500 Lm	E27 BC	AC 85-265V	180°	WW NW DW CW	ø16x62
	Bulb light BL-19-1-5	5 W	420 Lm	G24	AC 110-277V 50-60Hz	120°	WW NW DW CW	136x34x34
	Bulb light BL-17-1-5	5 W	400 Lm	E27	AC 220-240V	270°	WW DW	ø45x160

info@banana-light.com | www.banana-light.com



NextNRG H. K. Limited

19th Floor | Seaview Commercial Building
21/24 Connaught Road West – Hong Kong SAR
T: +852 2815 9988 | F: +852 2805 2556

Slovakia

Jasná 9 | 821 04 | Bratislava | Slovakia
T/F: +421 2 4363 2808

Brazil

R. Jose dos Santos Junior 574
Brooklin Paulista - Cep: 04609-010 - Sao Paulo (SP)
T/F: +55 11 5049 0058

Ceiling Light

	PRODUCT CODE	W	Lm		V		CCT	
	Ceiling light BL-41-1-3	3 W	150 Lm	Direct	AC 100-277V	60°	WM NW DW CW	ø65x51
	Ceiling light BL-41-1-6	3x2 W	350 Lm	Direct	AC 100-277V	60°	WM NW DW CW	ø88x72
	Ceiling light BL-41-1-9	3x3 W	800 Lm	Direct	AC 100-277V	60°	WM NW DW CW	ø88x72

info@banana-light.com | www.banana-light.com



NextNRG H. K. Limited

19th Floor | Seaview Commercial Building
21/24 Connaught Road West – Hong Kong SAR
T: +852 2815 9988 | F: +852 2805 2556

Slovakia

Jasná 9 | 821 04 | Bratislava | Slovakia
T/F: +421 2 4363 2808

Brazil

R. Jose dos Santos Junior 574
Brooklin Paulista - Cep: 04609-010 - Sao Paulo (SP)
T/F: +55 11 5049 0058

Spot Light

	PRODUCT CODE	W	Lm		V		CCT	
	Spot light BL-31-1-1.2	1.2 W	80 Lm	E27 MR16 GU10	AC 220-240V 110-130V	30°	WW DW	ø50x56
	Spot light BL-31-1-2	2 W	150 Lm	E27 MR16 GU10	AC 220-240V 110-130V	80°	WW DW	ø50x56
	Spot light BL-32-1-1.2	1.2 W	120 Lm	E14 E27	AC 120V AC 240V	180°	WW NW DW CW	ø41x66
	Spot light BL-32-1-1.8	1.8 W	180 Lm	E14 E27	AC 120V AC 240V	180°	WW NW DW CW	ø41x66
	Spot light BL-33-1-3	3 W	120 Lm	E14 E27 G24	AC 85-2650V	60°	WW NW DW CW	ø50x57
	Spot light BL-33-2-3	3 W	170 Lm	E14 E27 MR16 G10	AC/DC 12V/24V AC 85-265V AC 277-300V	25°-60°	WW NW DW CW	ø49x57

info@banana-light.com | www.banana-light.com



NextNRG H. K. Limited

19th Floor | Seaview Commercial Building
21/24 Connaught Road West – Hong Kong SAR
T: +852 2815 9988 | F: +852 2805 2556

Slovakia

Jasná 9 | 821 04 | Bratislava | Slovakia
T/F: +421 2 4363 2808

Brazil

R. Jose dos Santos Junior 574
Brooklin Paulista - Cep: 04609-010 - Sao Paulo (SP)
T/F: +55 11 5049 0058

Spot Light

PRODUCT
CODE

W

Lm



V



CCT



Spot light
BL-33-3-3

3 W

170 Lm

E14
E27
G10
MR16

AC/DC 12V/24V
AC 85-265V
AC 277-300V

25°-60°

WW
NW
DW
CW

ø49x65



Spot light
BL-33-4-3

3 W

170 Lm

E14
E27
G10
MR16

AC/DC 12V/24V
AC 85-265V
AC 277-300V

5°-60°

WW
NW
DW
CW

ø49x65



Spot light
BL-33-5-3

3 W

170 Lm

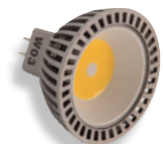
MR11

AC 85-265V

5°-120°

WW
NW
DW
CW

ø35x46,5



Spot light
BL-33-6-3

3 W

360 Lm

MR16

9-15V
AC/DC

60°

WW
DW

ø50x45



Spot light
BL-33-R-3

3 W

100 Lm

E27
GU10
MR16

AC/DC 12V/24V
AC85-265V
AC277-300V

15°-80°

WW
NW
DW
CW

ø49x61



Spot light
BL-34-1-3

3x1 W

200 Lm

E14
E27
G10
MR16

AC/DC 12V

30°

WW
NW
DW
CW

ø50x57

info@banana-light.com | www.banana-light.com



NextNRG H. K. Limited

19th Floor | Seaview Commercial Building
21/24 Connaught Road West – Hong Kong SAR
T: +852 2815 9988 | F: +852 2805 2556

Slovakia

Jasná 9 | 821 04 | Bratislava | Slovakia
T/F: +421 2 4363 2808

Brazil

R. Jose dos Santos Junior 574
Brooklin Paulista - Cep: 04609-010 - Sao Paulo (SP)
T/F: +55 11 5049 0058

Spot Light

	PRODUCT CODE	W	Lm		V		CCT	
	Spot light BL-34-2-3	3x1 W	300 Lm	E14 E27 GU10 MR16	AC/DC 12V/24V AC 85-265V AC 277-300V	5°-120°	WW NW DW CW	ø50x60
	Spot light BL-37-1-1	1 W	100 Lm	E27 GU10 MR16	AC/DC 12V/24V AC 85-265V AC 277-300V	5°-120°	WW NW DW CW	ø32x55
	Spot light BL-37-2-1	1 W	100 Lm	E27/E26 GU10 MR16	AC 85-265V	5°-120°	WW NW DW CW	ø32x49
	Spot light BL-37-3-3	3 W	170 Lm	MR11	AC 85-265V	5°-120°	WW NW DW CW	ø35x46,5

info@banana-light.com | www.banana-light.com



NextNRG H. K. Limited

19th Floor | Seaview Commercial Building
21/24 Connaught Road West – Hong Kong SAR
T: +852 2815 9988 | F: +852 2805 2556










Slovakia

Jasná 9 | 821 04 | Bratislava | Slovakia
T/F: +421 2 4363 2808

Brazil

R. Jose dos Santos Junior 574
Brooklin Paulista - Cep: 04609-010 - Sao Paulo (SP)
T/F: +55 11 5049 0058

Par Spot Light

	PRODUCT CODE	W	Lm		V		CCT	
	Par Spot light BL-30-2-5	5x1 W	500 Lm	E27 GU10 MR16	AC 85-265V	5°-120°	WW NW DW CW	ø92x80
	Par Spot light BL-30-2-6	6x1 W	600 Lm	E27/E26	AC 85-265V	5°-120°	WW NW DW CW	ø92x78
	Par Spot light BL-30-2-7	7x1 W	700 Lm	E27/E26	AC/DC 12V	5°-120°	WW NW DW CW	ø92x78
	Par Spot light BL-30-3-7	7x1 W	700 Lm	E27/E26	AC 85-265V	5°-120°	WW NW DW CW	ø95x85
	Par Spot light BL-30-1-9	7x1.2 W	600 Lm	E27	AC 85-265V	60°	WW NW DW CW	ø95x96
	Par Spot light BL-30-1-9(D)							
	Par Spot light BL-38-1-12(D)	9x1.2 W	800 Lm	E27	AC 85-265V	60°	WW NW DW CW	ø95x96
	Par Spot light BL-38-1-15	12x1.2 W	800 Lm	E27	AC 85-265V	60°	WW NW DW CW	ø95x96
	Par Spot light BL-38-2-12	12x1 W	1200 Lm	E27/E26	AC 85-265V	5°-120°	WW NW DW CW	ø120x118

info@banana-light.com | www.banana-light.com



NextNRG H. K. Limited

19th Floor | Seaview Commercial Building
21/24 Connaught Road West – Hong Kong SAR
T: +852 2815 9988 | F: +852 2805 2556

Slovakia

Jasná 9 | 821 04 | Bratislava | Slovakia
T/F: +421 2 4363 2808

Brazil

R. Jose dos Santos Junior 574
Brooklin Paulista - Cep: 04609-010 - Sao Paulo (SP)
T/F: +55 11 5049 0058