

Garden In-Ground Series

High Brightness LED Light Bulb

Document Reference #: APN004a
Issue Date: September 14, 2005

These are the latest Solid State Lighting designed for Garden and in-ground applications. These fixtures adopt the most advanced high bright LEDs on a die-casting aluminum enclosure that meet the industry requirement for garden and in-ground applications. The fixtures use the industry standard base, which shall work with all of the existing accessories available in the marketplace. The built-in state of the art Constant Current LED Driver (power supply) enhances the consistency of LED color temperature, life expectancy. And its known benefit of energy saving and durability for nearly maintenance free fixtures. Three type of our patented lens provides light output angle from 10 or 20 or 36 degrees.

Product features:

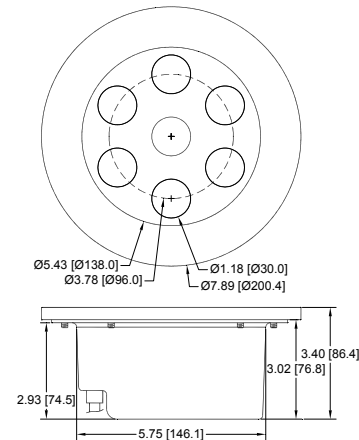
- Versatile input voltage available in AC or DC
- High Bright LED in 3-Watt or 1-Watt capacity
- Custom lens provides 10 degree, 20 degree and 36 degree light output
- Switch-mode constant current driver built-in
- Industry standard packages
- Impact resistant top glass
- Various color selections are also available



Electrical Specification:

Input	110-240VAC, 47/64Hz or 24VAC or 24VDC
Power Consumption	9 x 3W LED – 28.8-Watts typ. 6 x 3W LED – 19.2-Watts typ.
Efficiency	90% typ.
THD	.80
Crest Factor	1.5 max.
VF	9 LED, 31.5 - 36VDC 6 LED, 21.0 - 24VDC
Forward Current	3W LED - 700mA typ. 1W LED - 350mA typ.

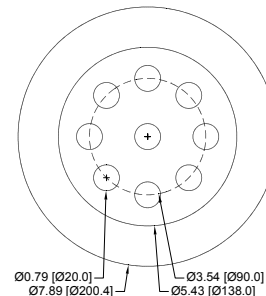
Mechanical Drawings:



Model Selection:

G	2	3	3	4	-	5	6	6	7	8	-	x	x
---	---	---	---	---	---	---	---	---	---	---	---	---	---

G	In Ground/Garden
2 – Enclosure Shape	R -Round or S -Square
3 – Number of LED	Number of LED
4 – Input voltage options	H -AC110/ A -AC24/ D -DC24
5 – Power of LED	1 -Watt or 3 -Watts
6 – Lens Size	20 / 30
7 – Lens Type	Spot / Flood
8 – LED Color	White / Red / Blue / Green
9 – Frame Color	Beige
10 – Reserved	Reserved



China: Sheng Qiang Gang, Huangjiang Town, Dongguan City, Guangdong Province, China (T) 86-769-336-5145
U.S.A: 5625-A S. Arville Street, Las Vegas, Nevada 89118 (T) 702-257-0889 (F) 364-1562 www.lumilensopto.com

Mechanical Drawings: (continue, available options)

