

PowerPax UK

Constant Current LED Drivers for Hi Power LED's



◆ Selection Guide

Part Number	Description
PLC3503-02	100-240Vac/1-3W 350mA Constant Current LED Driver
PLC3536-02	100-240Vac/1-8W 350mA Constant Current LED Driver
PLC7006-02	100-240Vac/3-6W 700mA Constant Current LED Driver
PLC7021-02	100-240Vac/3-9W 700mA Constant Current LED Driver

◆ Electrical Characteristics

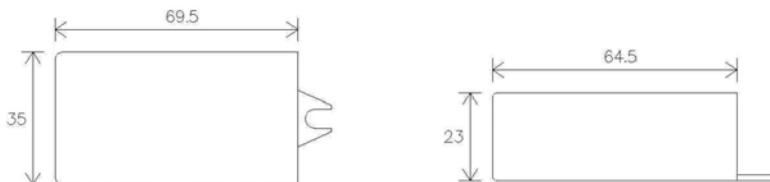
Parameter	Symbol	PLC3503-02	PLC3536-02	PLC7006-02	PLC7021-02
Input Voltage	V _{in}	100V-240Vac	100V-240Vac	100V-240Vac	100V-240Vac
Input Frequency	F	50Hz/60Hz	50Hz/60Hz	50Hz/60Hz	50Hz/60Hz
Output Voltage	V _o	3-12Vdc	3-36Vdc	3-12Vdc	3-21Vdc
Output Power	P _o	1-3W	1-8W	3-6W	3-9W
Output Current	I _o	350mA ±6%	350mA ±6%	700mA ±6%	700mA ±6%
Certificate		UL, cUL, CE & RoHS			

- Note:
- 1.Driver work with all color of standard and custom Hi power LED Light Sources
 - 2.Electrical characteristics at 25°C ambient temperature
 - 3.Protection against short circuit and thermal overload
 - 4.The total value of V_f should be under output voltage;can't turn on/off on the output side
 - 5.Before switching on the supply voltage, all LED must be completely wired and connected!!

◆ Environmental Ratings

Parameter	Symbol	Minimum	Maximum
Operating Temperature	T _{op}	-10°C	+40°C
Storage Temperature	T _{st}	-20°C	+80°C

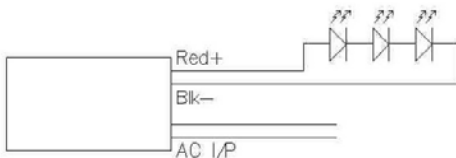
◆ Mechanical Dimensions (mm) : 69.50L*35W*23H (mm)



◆ Configuration arrays when using Hi power LEDs

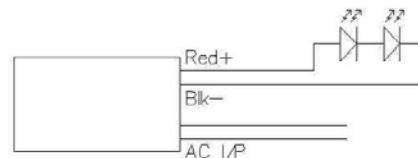
With the 350mA Output Current

PLC3503-02 driver at 350mA/LED : from 1 to 3 LEDs in series

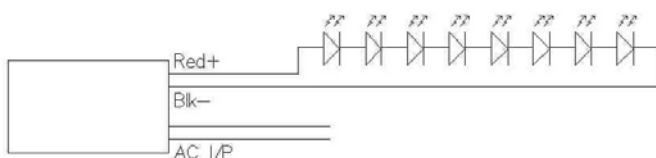


With the 700mA Output Current

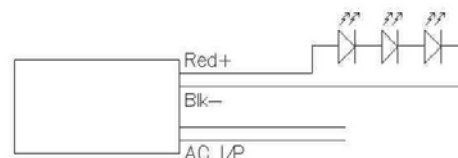
PLC7006-02 driver at 700mA/LED : from 1 to 2 LEDs in series



PLC3536-02 driver at 350mA/LED : from 1 to 8 LEDs in series



PLC7021-02 driver at 700mA/LED : from 1 to 3 LEDs in series



PowerPax UK Ltd

Unit 7 Albury Close, Loverock Road, Reading, Berkshire, RG30 1BD.

Tel: 01189 590111 Fax: 01189 590155 E-mail: info@powerpaxuk.com website: www.powerpax.co.uk