



Total Power
40 Watts

Input Voltage
90 ~ 264 VAC

Outputs
One

GVA lighting products with BID Drivers require a *constant voltage* power supply in order to operate correctly. The LP1040 constant voltage power supply comes in 12V or 24V output and can be used to power the following lighting products with BID LED Drivers:

- Linear Light Engines such as the RG, BL, BL83, NIC and IR
- Ducats
- CoinLights such as the CLXX-BID series and IP-SF

GVA lighting products without integral LED drivers require a *constant current* power supply in order to operate correctly. The LP1040 constant current power supply is available in 900mA output and can be used to power linear Light Engine such as the RGD-300.

SPECIAL FEATURES

- UL1310 Class 2 compliant and UL48 Compliant
- Single output, constant current or constant voltage designs
- IP66 compliant
- Suitable for wet or damp locations
- Designed for outdoor or indoor applications
- Suitable in standard electrical junction boxes
- Compact, lightweight in plastic case
- PFC (Power Factor Correction) to reduce power consumption

MODEL INFORMATION

Model Number	Constant Voltage Mode		
	VDC	mA	Watts
LP1040-12	12, ±5%	3330	40
LP1040-24	24, ±5%	1670	40

Model Number	Constant Current Mode		
	VDC	mA	Watts
LP1040-36C0900	15~24	900, ±5%	40

SAFETY

UL	UL 1310, Class 2 and UL48 Compliant
cUL	cUL 1310, Class 2 and UL48 Compliant
CE	Certified

ENVIRONMENTAL

Operating Temperature	-30°C to 60°C (-22°F to 140°F)
DE-rating: 1% per °C from 60~70°C	
Storage Temperature	-40°C to +85°C (-40°F to 185°F)
Humidity (Non-Condensing)	5% to 95%
Cooling	Convection
Vibration Frequency	5 to 50Hz
MTBF	>100,000 Hours at full load and 25°C ambient conditions (MIL-217F)
EMC	Compliant to 47CFR, Part 2, Part 15, and CispR PUB, 22 Class B

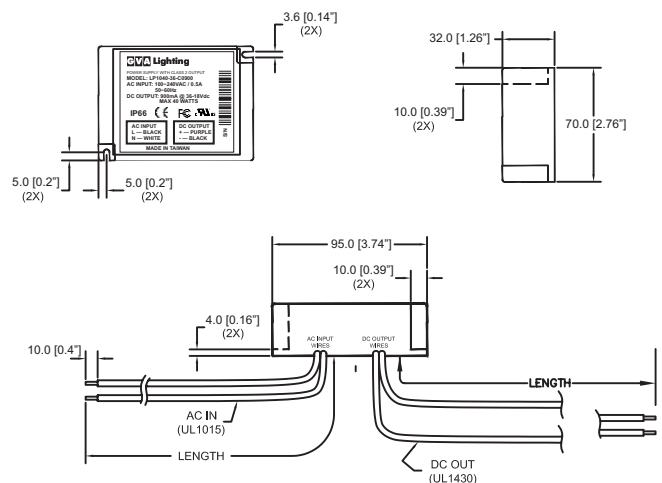
OTHER

Warranty	Two Years
Weight	270g (0.6lb)
Size (WxHxD)	9.5cm x 3.2cm x 70cm (3.74" x 1.26" x 2.76")

ELECTRICAL SPECIFICATIONS

Maximum Power	40 Watts
Input Range	90~264 VAC
Frequency	47 to 63 Hz
Power Factor	> 0.90 at full load, 115VAC
Inrush Current	30 Amps max at 230VAC, cold start, 25°C
Input Current	0.50 Amps maximum at 115VAC
Efficiency	85% typical at maximum load
EMI Filtering	47CFR, Part 2, Part 15 and CispR PUB, 22 Class B
Current Accuracy	±1% (when applicable)
Load Regulation	±3%
Ripple/Noise	N/A
Leakage Current	300µA typ.
Hold up time	Half cycle minimum at 120VAC and 80% of rated load
Protection	Over-voltage, Over current and Short Circuit protection: Auto-recovery

MECHANICAL DRAWING



In an effort to continually improve our products, we reserve the right to change or modify designs and or materials at any time, without prior notice. All rights reserved. These products may be covered by one or more Canadian trademarks or patents pending.

Rev 2 (01-08-2006)