

STAINLESS STEEL FLEXIBLE COUPLING 不锈钢柔性联轴器

Features:

- One piece construction
- 3 or 6 flexing beams
- High flexibility
- Constant velocity
- No lubrication
- Torsionally rigid
- No maintenance
- No backlash
- Small lightweight
- Reversible

特点:

- 一体式结构
- 分三槽和六槽
- 高弹性
- 恒速
- 无需润滑
- 高扭转刚度
- 无需维修
- 零间隙传动
- 重量轻
- 可回转

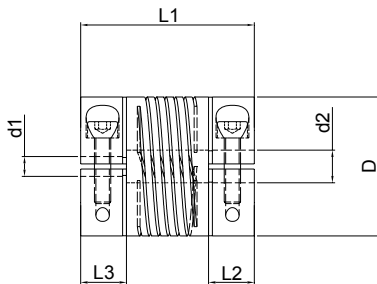
Stainless steel 3 beam type:

DHC □

三槽式



Clamp fixing 夹紧安装



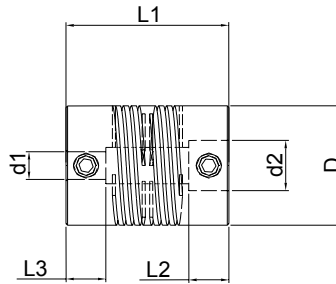
Stainless steel 6 beam type:

HSZ □

六槽式



Set screw fixing 定位螺丝安装



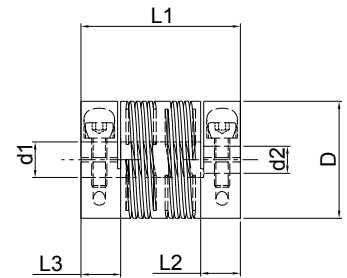
Stainless steel 6 beam type:

HCZ □

六槽式



Clamp fixing 夹紧安装



Product Part number 订货号	DIMENSION 尺寸(±0.3) (mm)				Bolt 螺丝 直径 M	Max. Torque 最大扭矩 Nm	Max parallel 平行度 (mm)	Max angle 角度	Min 最小轴径 d1	Min 最小轴径 d2	Max. 最大轴径 d1 & d2
	D	L1	L2	L3							
DHC3	12.7	19.05	5.4	5.4	M2x2	1.62	0.127	5°	∅ 2	∅ 4.4	∅ 6.35
DHC4	19.05	22.86	7.2	7.2	M2.5x2	4.39	0.127	5°	∅ 2.8	∅ 5.8	∅ 10
DHC5	25.4	31.75	8.36	8.36	M3x2	9.75	0.127	5°	∅ 5.9	∅ 7.46	∅ 12.7
DHC6	31.75	44.45	11.1	11.1	M4x2	17.06	0.127	5°	∅ 6.0	∅ 10.0	∅ 16
HSZ2	9.52	19.56	5.97	5.97	M2.5	1.5	0.12	5°	∅ 2	∅ 2.8	∅ 4.76
HSZ3	12.7	25.4	6.86	6.86	M3	3	0.17	5°	∅ 2.9	∅ 4.39	∅ 6.35
HSZ4	19.05	28	6.35	6.35	M4	8	0.25	7°	∅ 4.39	∅ 5.8	∅ 10
HSZ5	25.4	38.1	10.16	10.16	M5	16	0.38	7°	∅ 5.88	∅ 7.5	∅ 12.7
HSZ6	31.75	57.15	16	16	M6	25	0.5	7°	∅ 6	∅ 10	∅ 19
HCZ3	12.7	25.4	6.86	6.86	M2	3	0.17	5°	∅ 2.9	∅ 4.39	∅ 6.35
HCZ4	19.05	28	6.35	6.35	M2.5	8	0.25	7°	∅ 4.39	∅ 5.8	∅ 10
HCZ5	25.4	38.1	10.16	10.16	M3	16	0.38	7°	∅ 5.88	∅ 7.5	∅ 12.7
HCZ6	31.75	57.15	16	16	M4	25	0.5	7°	∅ 6	∅ 10	∅ 16
HCZ7	38.1	66.67	18	18	M5	36	0.6	7°	∅ 8	∅ 12	∅ 19
HCZ8	44.45	76.2	20	20	M5	48	0.8	7°	∅ 9	∅ 14	∅ 22