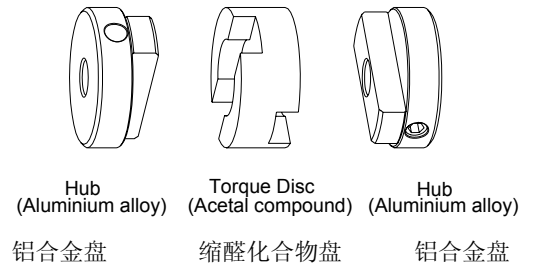


Features:

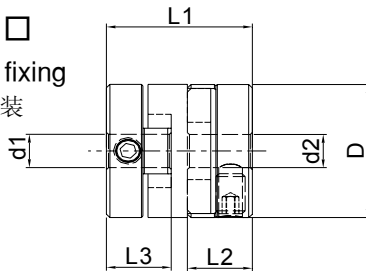
- Zero backlash
- Flexible movement - little bearing load
- High twisting endurance characteristics
- Electrical insulation
- Extensive operation over parallel, angular and misalignment movement
- Free from electro-magnetism
- Less inertia
- Easy assembling

特点:

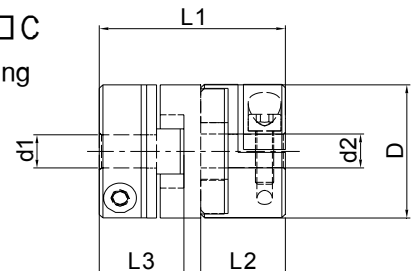
- 零间隙传动
- 轴承受力小
- 高扭转刚度
- 隔离
- 允许一定量的平行度和角度偏移
- 不受电磁场影响
- 安装容易



SOH-□□
Set screw fixing
定位螺丝安装



SOH-□□C
Clamp fixing
夹紧安装



Product Part number 订货号	DIMENSION 尺寸(±0.3)				Bolt 螺丝直径 M	weight 重量 (kg)	Max. Torque 最大扭矩 Nm	I: kgf-cm ² (GD ² : kgf-cm ²) 转动惯量	Max parallel 平行度 mm	Max angle 角度	Max RPM 最大转速	Standard Shaft diameter 轴径 d1, d2
	D	L1	L2	L3								
SOH-16	16	18	8	8	M3	0.007	6.9	2.4X10 ⁻³ (0.009)	1.2	2°30'	7,000	∅ 3 ~ ∅ 6.35
SOH-20	20	20	8.9	8.9	M4	0.014	12.7	7.4X10 ⁻³ (0.029)	1.8	2°30'	5,900	∅ 5 ~ ∅ 8
SOH-25	25.5	25.5	11.6	11.6	M4X2	0.020	18.7	1.7X10 ⁻² (0.07)	2.2	2°30'	4,800	∅ 6 ~ ∅ 10
SOH-32	32	32	14.5	14.5	M4X2	0.048	37	6.7X10 ⁻² (0.27)	2.8	2°30'	4,000	∅ 8 ~ ∅ 14
SOH-43	43	52	24	24	M5X2	0.160	52	0.39 (1.59)	3.5	2°30'	3,600	∅ 10 ~ ∅ 16
SOH-53	53	58	27	27	M5X2	0.252	72.7	0.99 (3.95)	4.5	2°30'	3,100	∅ 14 ~ ∅ 25
SOH-16C	16	22.5	10.25	10.25	M2.5	0.009	6.9	3.06X10 ⁻³ (0.012)	1.2	2°30'	7,000	∅ 3 ~ ∅ 6.35
SOH-20C	20	25.5	11.6	11.6	M2.5	0.016	12.7	8.5X10 ⁻³ (0.084)	1.8	2°30'	5,900	∅ 5 ~ ∅ 8
SOH-25C	25.5	32	14.8	14.8	M3	0.034	18.7	2.9X10 ⁻² (0.12)	2.2	2°30'	4,800	∅ 6 ~ ∅ 10
SOH-32C	32	45	21	21	M4	0.080	37	0.12 (0.45)	2.8	2°30'	4,000	∅ 8 ~ ∅ 14
SOH-43C	43	52	24	24	M5	0.160	52	0.39 (1.59)	3.5	2°30'	3,600	∅ 10 ~ ∅ 16
SOH-53C	53	58	27	27	M5	0.252	72.7	0.99 (3.95)	4.5	2°30'	3,100	∅ 14 ~ ∅ 25