



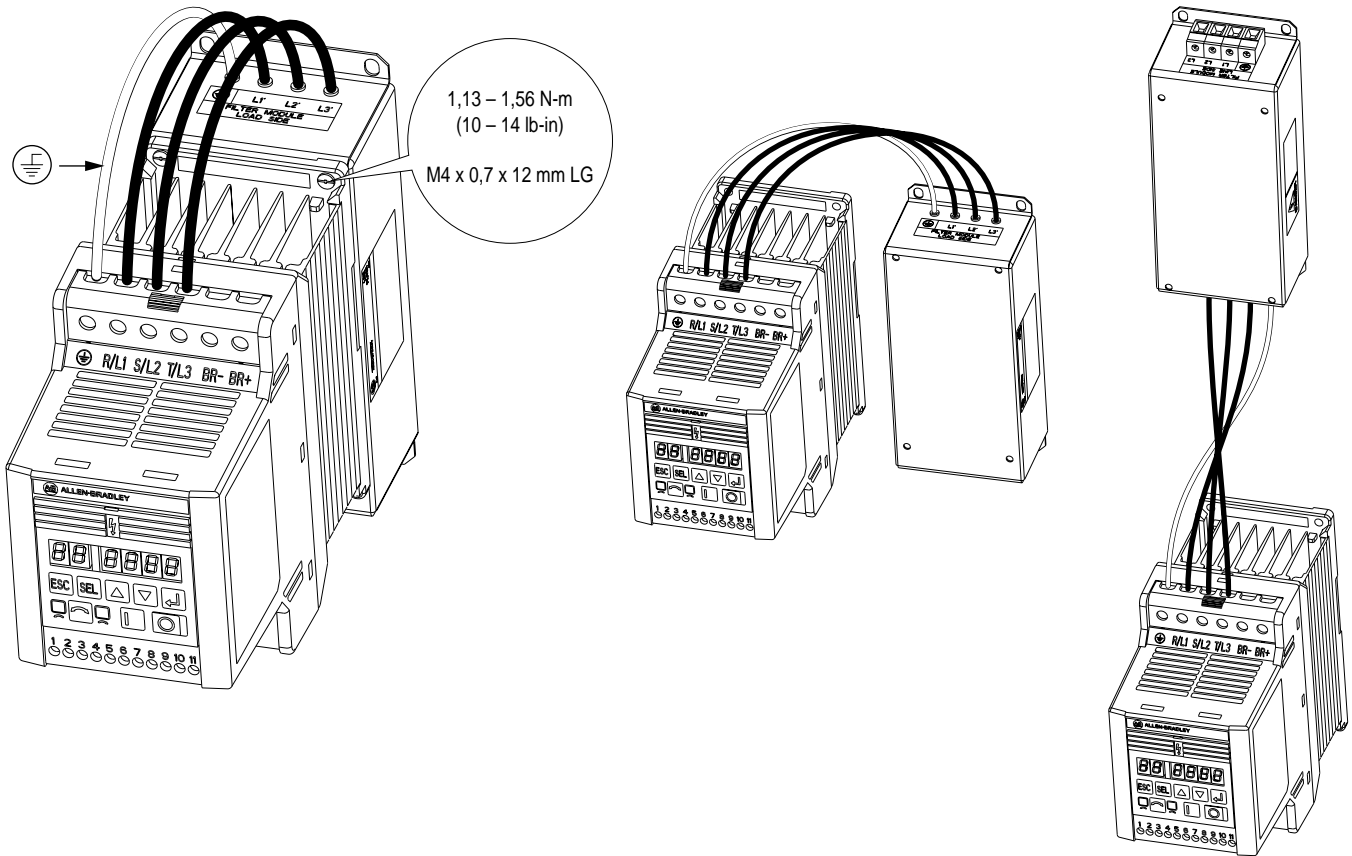
# Line Filter Module for Bulletin 160 (Series C)

(Cat. No. 160S-RFA-9-A, -RFA-16-B, 160-RFA-22-B, 160-RFB-5-A, -RFB-14-A, -RFB-14-B)



**ATTENTION :** To prevent electrical shock, disconnect from power source before installing or servicing. High leakage current, connect to earth.

## Installation Options

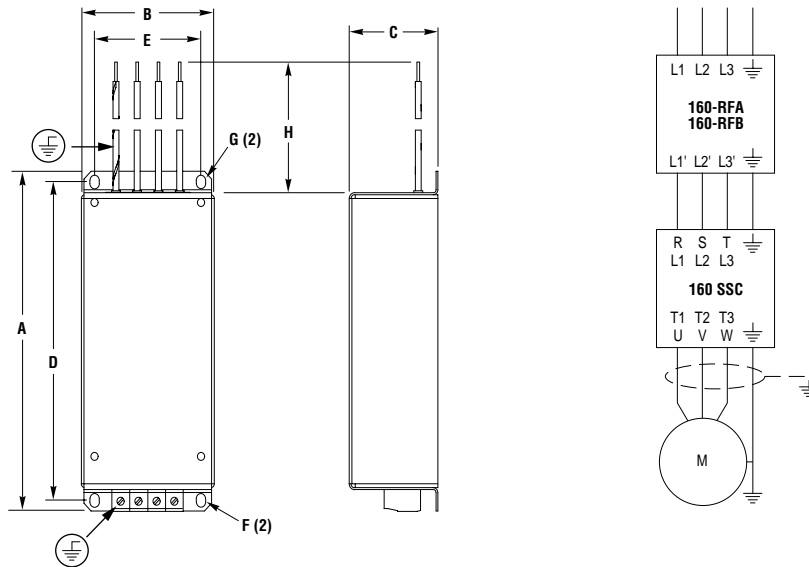


Line Filter Module	Rated Voltage / Rated Current	For Use With SSC Series C Drive Type
160S-RFA-9-A	1~ / 200-240 V / 10 A	160S-AA02 160S-AA03 160S-AA04
160S-RFA-16-B	1~ / 200-240 V / 16.3 A	160S-AA08
160-RFA-22-B	3~ / 200-240 V / 22 A	160-AA18
160-RFB-5-A	3~ / 200-460 V / 5.5 A	160-AA02 160-AA03 160-AA04 160-BA01 160-BA02 160-BA03 160-BA04
160-RFB-14-A	3~ / 200-460 V / 14.3 A	160-AA08 160-AA12 160-BA06
160-RFB-14-B	3~ / 200-460 V / 14.2 A	160-BA10

**Bulletin 160 Line Filter Module Specification Table**

Line Filter Module	160S-RFA-9-A	160S-RFA-16-B	160-RFA-22-B	160-RFB-5-A	160-RFB-14-A	160-RFB-14-B
Input Voltage, Frequency	1~ / 200-240 V		3~ / 200-240 V	3~ / 200-460 V		
Rated Current	10 A	16.3 A	22 A	5.5 A	14.2 A	14 A
Operational Range (V), (Hz)	180-265 V, 48-62 Hz			180-506 V, 48-62 Hz		
Power Dissipation (W)	10 W	6 W	9 W	6 W	12 W	6 W
Leakage Current (Worst Case mA) Running, Supply Voltage Tol. 3% Acc. EN 60950 Fault Method	3.5 mA 3.5 mA	3.5 mA 3.5 mA	5 mA 30 mA	5 mA 30 mA	5 mA 30 mA	5 mA 30 mA
Weight (kg)	0.59 kg	1.2 kg	1.3 kg	0.73 kg	0.8 kg	1.2 kg
Enclosure	IP 20					
Operating Temperature	0°C to 50°C					
Storage Temperature	-25°C to 85°C					
Relative Humidity	0 to 90% (Non Condensed)					
Vibration	1.0 G Operational – 2.5 G Non-Operational					
Shock	15 G Operational – 30 G Non-Operational					
Altitude	1,000 m (3,300 ft) Without derating, consult factory for derating information.					
EMC Standards	EN 61800-3, EN 50081-1 AC Mains (Residential and Commercial Environment) Limits equivalent to EN 55011 Class B, Group 1					
International Standards and Approvals	CE Low Voltage Directive					

Residential, commercial, and light industry. Tested with a maximum motor cable length of 25 m at 4 kHz carrier frequency. Practical results may differ.



Line Filter Module	A	B	C	D	E	F	G	H
160S-RFA-9-A	182	75.0	37.5	163.0	60.0	M4.5 x 6.5 (0.18 x 0.26) obround hole (2 places)	M4.5 x 6.5 (0.18 x 0.26) obround hole (2 places)	200 (7.87)
160-RFB-5-A	(7.17)	(2.95)	(1.47)	(6.42)	(2.36)			
160-RFB-14-A	182	75.0	47.5	163.0	60.0	M4.5 (0.18) slot (2 places)	M4.5 (0.18) (2 places)	
160S-RFA-16-B	(7.17)	(2.95)	(1.87)	(6.42)	(2.36)			
160-RFA-22-B	227	87.0	55.5	212.0	60.0	M4.5 (0.18) slot (2 places)	M4.5 (0.18) (2 places)	
160-RFB-14-B	(8.94)	(3.43)	(2.18)	(8.35)	(2.36)			

**Rockwell  
Automation**