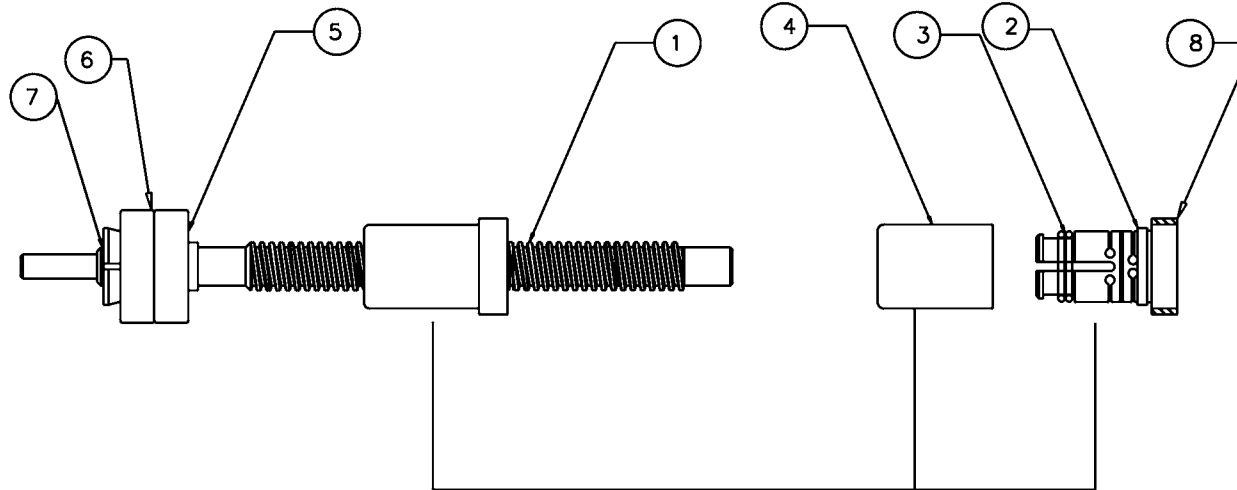


THIS DRAWING AND THE SUBJECT MATTER ILLUSTRATED IS THE PROPERTY OF LINTECH AND THE DRAWING IS NOT TO BE COPIED IN PART OR WHOLE, DUPLICATED, REPRODUCED, USED BY PARTIES OTHER THAN LINTECH TO MANUFACTURE THE SUBJECT MATTER ILLUSTRATED WITHOUT THE EXPRESS WRITTEN AUTHORIZATION OF LINTECH OR SUBMITTED TO OTHER PARTIES WITHOUT THE EXPRESS WRITTEN AUTHORIZATION OF LINTECH.

REVISIONS				
ZONE	LTR	DESCRIPTION	DATE	APPROVED
	A	SEE E.C.R. 00656	1-6-00	T.A.
	B	SEE E.C.R. 00657	1-7-00	T.A.
	C	SEE E.C.R. 00710	3-21-00	T.A.
	D	SEE E.C.R. 00757	5-03-00	T.A.
	E	SEE E.C.R. 00764	5-16-00	T.A.



NOTES:

1. INSTALL AND PRELOAD BALL BEARINGS AS FOLLOW:
 - A) CLEAN BALL BEARINGS AND THE LEAD SCREW
 - B) INSTALL ITEM 5 ONTO THE SHAFT, INSTALL TWO WASHER ITEM 6 BETWEEN THE BALL BEARINGS.
 - C) USE ITEM 7 TO LOCK AND PRELOAD THE INNER RACE OF THE BALL BEARING,
2. INSTALL SPRING ITEM 3 INTO NUT ITEM 2 AS SHOWN
3. LOCKTITE 262 COVER ITEM 4 INTO NUT ITEM 2.
4. INSTALL THE NUT OVER THE LEAD SCREW AS SHOWN.
5. PRESS FIT OR LOCKTITE (RED) ITEM 8 INTO ITEM 2.
6. NO BRUSHES ON NUT ASSEMBLY.
7. ZERO BACKLASH.
8. BREAKAWAY TORQUE TO BE MEASURED IN VERTICAL POSITION HOLDING NUT BY HAND USING A TORQUE WATCH, AND THE SCREW SHOULD HAVE THE GREASE PER NOTE 9. THE TORQUE TO BE SET BETWEEN 5 OZ. IN. MIN. TO 7 OZ. IN. MAX.
9. APPLY KS-46 LUBRICANT TO LEAD SCREW ITEM 1. THE GREASE IS SUPPLIED BY CUSTOMER.
10. SHIPPING INSTRUCTION: DO NOT SPRAY 5-WAY PENETRANT LUBRICATE ON THE LEAD SCREW ASSY. THE LEAD SCREW SHOULD BE PACKAGED IN THE PLASTIC TUBE WITH PLASTIC CAP.

ITEM	QTY	ORG SIZE	PART NO.	DESCRIPTION	MATERIAL OR NOTE
8	1	C	201731	SPACER	LINTECH
7	1		BH-00	LOCKNUT	W/H
6	1	C	60600	SHIM SET	LINTECH
5	2		200 S ZZ	BALL BEARING, DEEP GROVE	NSK
4	1	C	201468	COVER, NUT	LINTECH
3	2		E1-014B-7 SS	SPRING, EXT.	LEE
2	1	C	201469-06	1/2" DIA NUT, ANTI-BACKLASH	LINTECH
1	1	C	201479-03	LEAD SCREW, 1/2" DIA, .200 L	LINTECH

LIST OF MATERIAL					
UNLESS OTHERWISE SPECIFIED TOLERANCES ARE IN INCHES	DRAWN	BK	DATE	 LINTECH MOTION CONTROL, INC. MONROVIA, CA. 91016 (920) 355-0110	
FRAC. DEC. ANGLES	CHECKED		07-30-99		
0.1/0.04 0.005 0.0037	APPROVED	BK	07-30-99		
BREAK ALL SHARP EDGES	MATERIAL			PART NAME LEAD SCREW ASSY.,	
MACHINED SURFACE \sqrt{R}	FINISH			1/2" DIA, .200 L, 6.00 T	
SCALE 1/1	APPLICATION			CODE IDENT	DRAWING OR PART NO.
				86849	201737

DO NOT SCALE

201737

A