

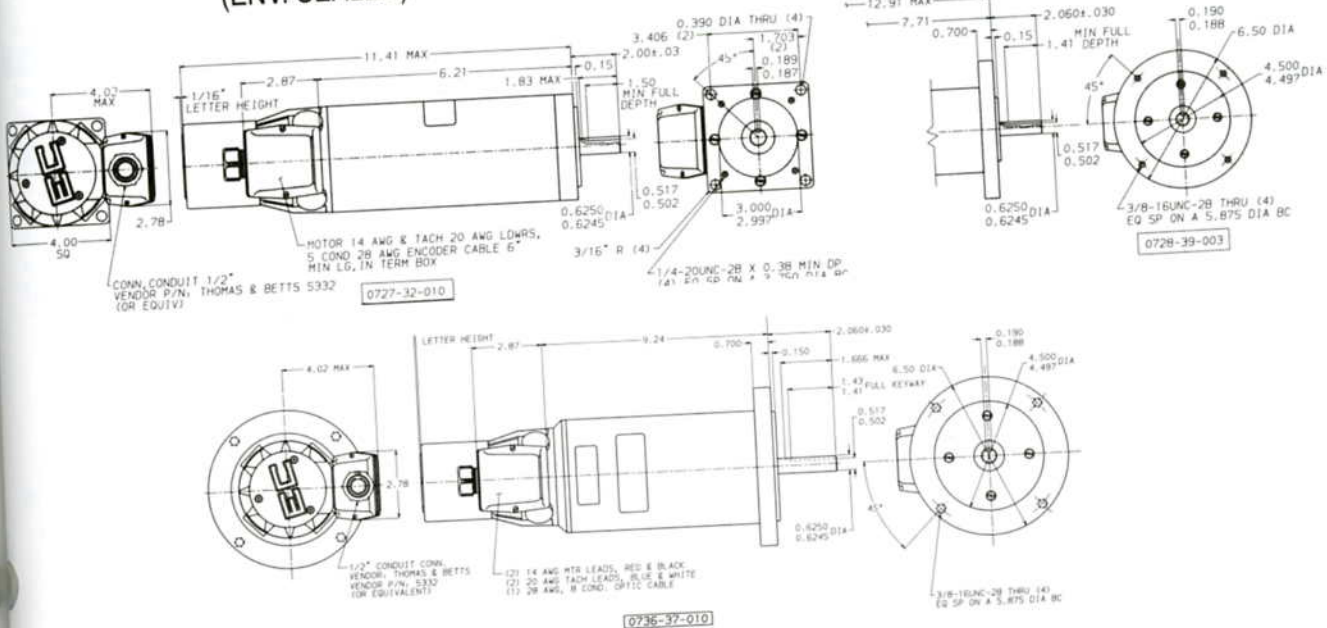
# MAX-400, LA-5600 & MINI-SERIES MATCHING MOTORS / TACHOMETERS

MOTOR RATINGS (up to 155°C Armature Temp.)	0723-31-041 (Sq. Flange)	0727-32-010 (Sq. Flange)	0728-39-003 (NEMA 56C)	0736-37-010
	Env. Sealed	Env. Sealed	Env. Sealed	Env. Sealed
Continuous Stall Torque (lb-in)	25.4	28	36	50.5
Peak Torque (lb-in)	125	130	180	223
Maximum Terminal Voltage (V)	107	120	120	86
Maximum Operating Speed (rpm)	3000	2200	2700	1900
<b>MECHANICAL DATA</b>				
Rotor Moment of Inertia (lb-in-sec <sup>2</sup> )	.0125	0.007	0.011	0.014
Mechanical Time Constant (ms)	12.78	8.5	6.1	6.1
Damping Constant (lb-in/krpm)	0.63	0.8	1.0	2.2
Thermal Resistance (°C/watt)	1.3	1.3	1.1	1.0
Maximum Armature Temperature (°C)	155	155	155	155
Maximum Friction Torque (lb-in)	0.9	1.6	1.6	1.6
Maximum Shaft Radial Load (lb) (1" from front bearing continuous)	40	40	40	40
Motor Weight (Including tachometer) (lb)	16	15	21	30
<b>WINDING DATA (Class F Insulation)</b>				
K <sub>T</sub> Torque Constant ± 10% (lb-in/amp)	3.01	1.77	2.98	3.86
K <sub>E</sub> Voltage Constant ± 10% (V/krpm)	35.7	21.0	35.4	45
Winding Resistance ± 15% @ 25°C (Ω) RA	1.1	0.22	0.42	0.67
Electrical Time Constant (ms)	5.79	1.7	2.1	2.3
Maximum Pulse Current (A)	46	73	60	65
Armature Inductance (mH)	6.1	0.7	1.28	1.6
<b>TACHOMETER RATINGS</b>				
Voltage Constant ± 10% (V/krpm)	14.0	14.0	14.0	14.0
Resistance ± 15% @ 25°C (Ω)	550	100	100	100
Ripple (peak-to-peak rated at 500 rpm) (mv)	350	140	140	140



Typical 0727/0728  
(ENV. SEALED)

(0736 Series not shown)



Brushless Positioning  
Servo Drive

Dedicated Position  
Controllers

Brushless  
Servo Drives

Brushless  
Servo Motors

Brush Type

Brush Type