

# HSP type

- HSP 0120
- HSP 0130-1[N]
- HSP 0130-1B[N]
- HSP 0130-2
- HSP 0130-2B
- HSP 0180-1
- HSP 0180-1B[N]
- HSP 0180-2B
- HSP 0180-3B
- HSP 0180-4B
- HSP 0320-1B[N]
- HSP 0320-2B[N]
- HSP 0320-35B
- HSP 0320-3B[N]
- HSP 0450-1B[N]
- HSP 0450-2B[N]
- HSP 0450-3B[N]
- HSP 0450-4B[N]
- HSP 0625-1B[N]
- HSP 0625-2B[N]

※ [N]은 신형.



· 실용신안등록 제 093356호  
· 실용신안등록 제 134988호

## ● 용도 Application

자동화기계, 반도체, 전자, 목공기계, 식품기계, 취출로봇, 섬유기계, 특장차  
자동차생산설비, 의료기계, 각종 공작기계 및 컴퓨터 관련 기계에 적용.

*Factory automation, Wood work machine, Food processing, Grabbing-and-extracting robot, Fabric machine, Special purpose vehicle, Automobile industry, Medical Machine, Machining center and Computer related machine*

## ● 특징 Features

- 본체는 개폐형으로 Cable, Hose의 설치가 쉽습니다.
  - 경량이어서 움직임이 원활합니다.
  - Divider가 좌우로 움직입니다.
  - 150여종의 다양한 모델과 특수 규격도 주문가능합니다.
  - 자동화기계, 목공기계, 식품기계, 산업용로봇 등 다방면에 적합한 모델입니다.
- *HSP type provides cover lead for easy installation of cable and hose.*
  - *Since it is light, movement is prompt.*
  - *Divider is adjustable.*
  - *150 various models are manufactured. Also special order can be taken place.*
  - *Applicable for factory automation, wood work, food processing, industrial robot and many more.*

### ● 운용환경 Operation

HSP Type은 플라스틱 RoboChain으로 케이블 및 호스의 인입을 용이하게 하는 개폐형으로 설계되어 있습니다. HSP Type의 RoboChain는 모든 구성품이 고강도 엔지니어링 플라스틱으로 설계 제작되어 소음이 적고, 깨끗하며 작고, 가벼운 장점이 있습니다. 특히 HSP 0450-1BN 이상의 Type은 Divider를 부착하여 사용할 수 있습니다. HSP Type은 전자기계, 산업용 로봇 공작기계 및 다방면에 사용되는 이상적인 장치입니다.

*Cover in HSP Type provides easy access and installation of cable and hose. All parts are made of highly durable engineering plastic. Therefore, it features less noise, good appearance and light weight. In particular, HSP 0450-1BN and higher types accommodate divider.*

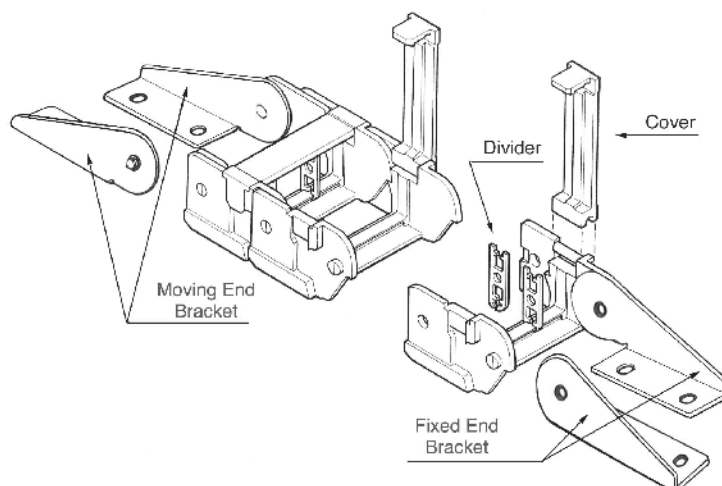
*This type is applicable for many area such as electronic and electrical machine, industrial robot, machine center and many more.*

### ● 주요제원 Properties

- 운동속도: 180m/min이하
- 케이블 호스의 직경: 36mm 이하
- 사용온도: -25 ~ 100°C
- 장력: 190 (건조), 120 (공기습도) N/mm<sup>2</sup>
- 인장 팽창: 4 (건조), 6 (공기습도) %
- 탄성계수: 10000 (건조), 7000 (공기습도) N/mm<sup>2</sup>
- 미끄럼 마찰: 0.4 (무윤활시)
- 기본색: Black (칼라 주문가능)
- 재질: 엔지니어링 플라스틱

- Moving Velocity: below 180m/min
- Diameter of Cable Hose: less than 36mm
- Operating Temperature: -25 ~ 100°C
- Tension: 190 (in dry), 120 (in moisture) N/mm<sup>2</sup>
- Stretch: 4 (in dry), 6 (in moisture) %
- Elasticity: 10000 (in dry), 7000 (in moisture) N/mm<sup>2</sup>
- Sliding Friction: 0.4 (non-greased)
- Basic Color: Black
- Material: Engineering Plastic

### ● 구조와명칭 Structure

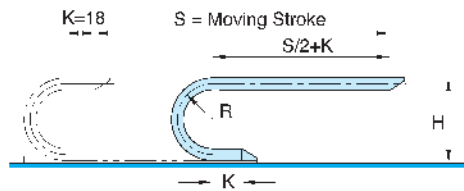
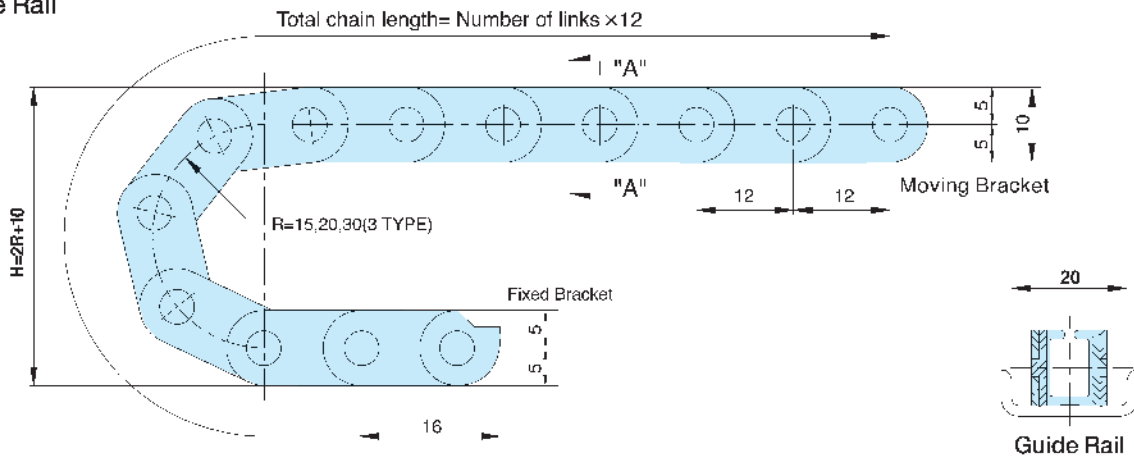


# HSP 0120

Order Example (주문예)

HSP0120	15R	1,000L	3SETS
Type	Radius	Length	Q'ty

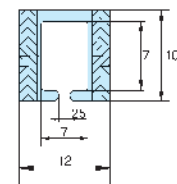
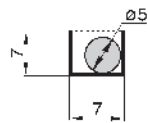
Chain, Guide Rail



• Length  $L = \frac{S}{2} + \pi R + 36$

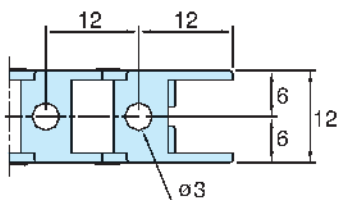
• Radius	R	15	20	30
• Height	H	40	50	70

Max. Cable Diameter Cross Section

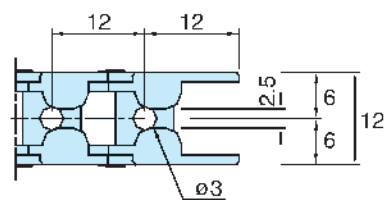


A-A Cross Section

Brackets



Fixed Bracket



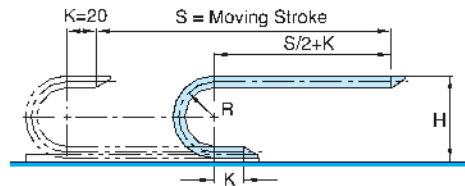
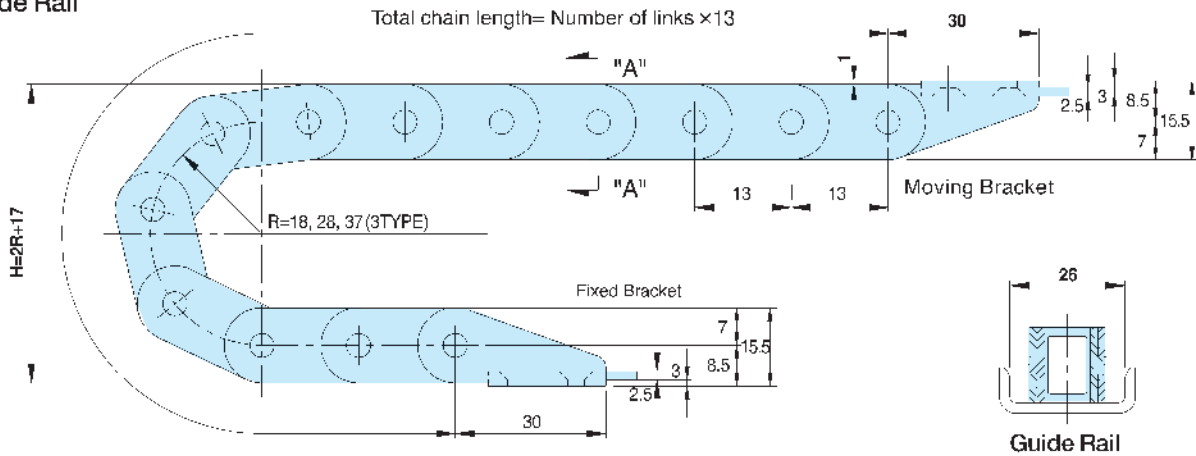
Moving Bracket

# HSP 0130-1N

Order Example (주문예)

HSP0130-1N	37R	1,000L	3SETS
Type	Radius	Length	Q'ty

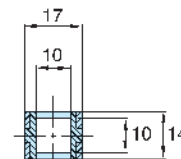
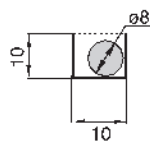
Chain, Guide Rail



• Length  $L = \frac{S}{2} + \pi R + 40$

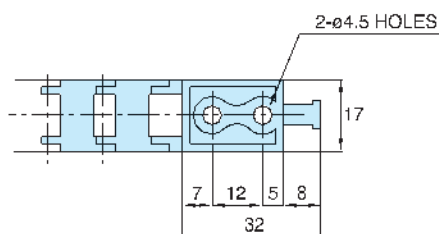
• Radius	R	18	28	37
• Height	H	53	73	91

Max. Cable Diameter Cross Section

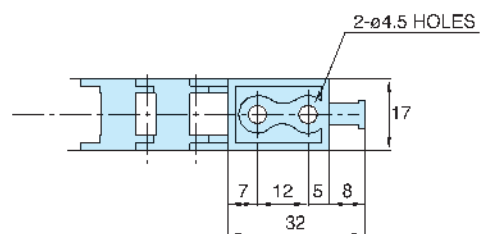


A-A Cross Section

Brackets (HSP 0130-1BN과 호환가능)



Fixed Bracket



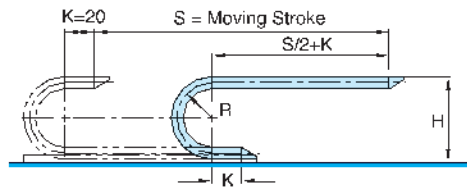
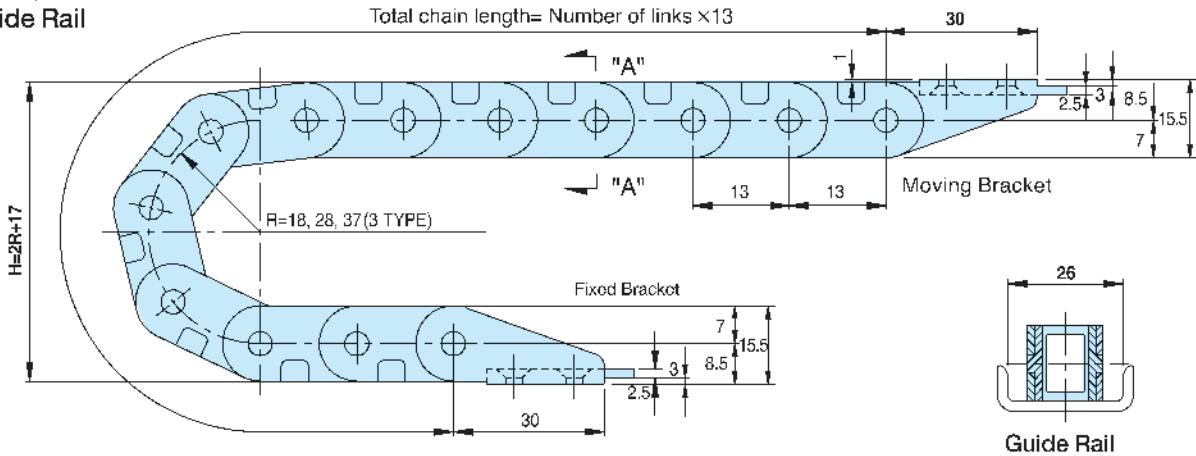
Moving Bracket

# HSP 0130-1BN

Order Example (주문예)

HSP0130-1BN 37R 1,000L 3SETS  
 Type Radius Length Q'ty

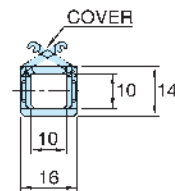
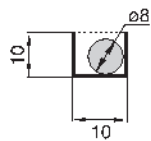
Chain, Guide Rail



• Length  $L = \frac{S}{2} + \pi R + 40$

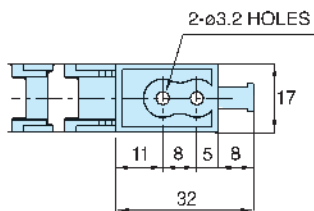
• Radius	R	18	28	37
• Height	H	53	73	91

Max. Cable Diameter Cross Section

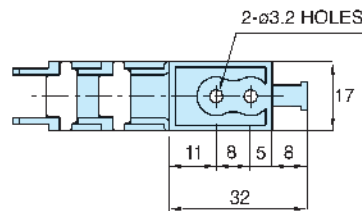


A-A Cross Section

Brackets (HSP 0130-1N과 호환가능)



Fixed Bracket



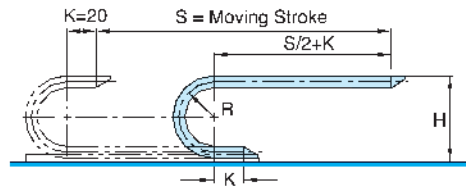
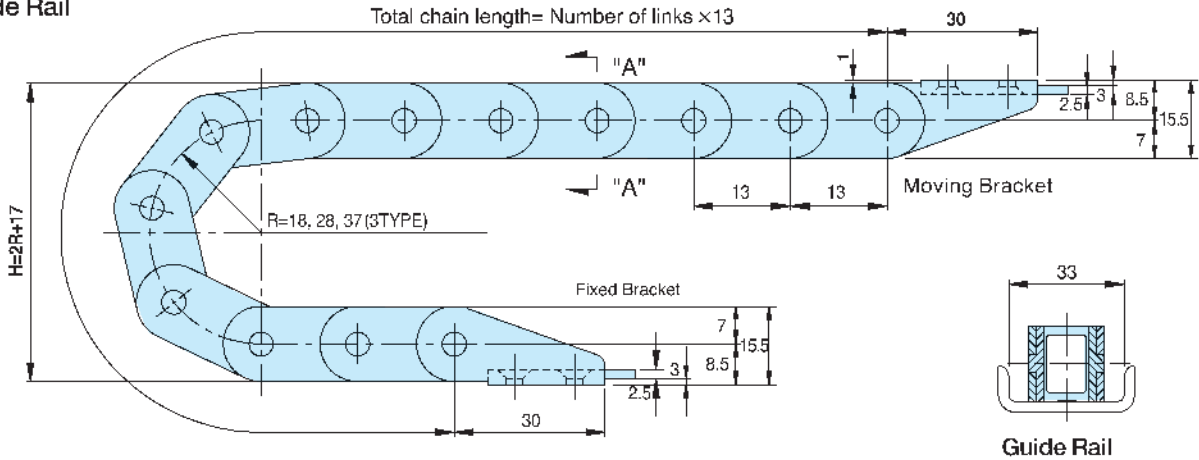
Moving Bracket

Order Example (주문예)

# HSP 0130-2

HSP0130-2    28R    2000L    10SETS  
 Type          Radius      Length      Q'ty

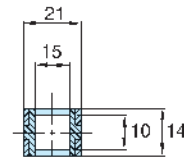
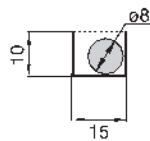
Chain, Guide Rail



• Length  $L = \frac{S}{2} + \pi R + 40$

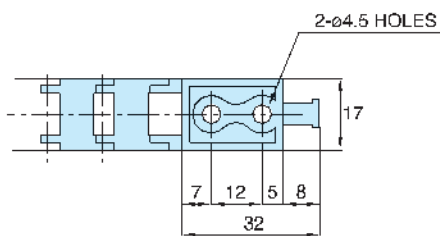
• Radius	R	18	28	37
• Height	H	53	73	91

Max. Cable Diameter Cross Section

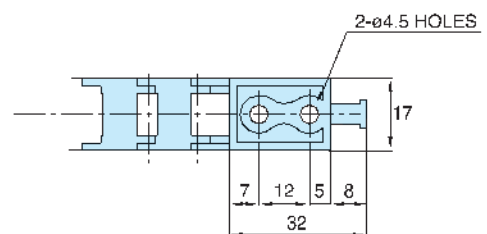


A-A Cross Section

Brackets



Fixed Bracket



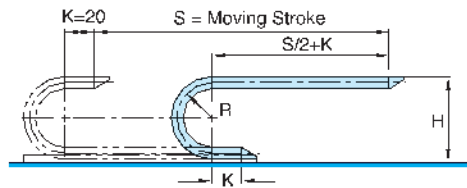
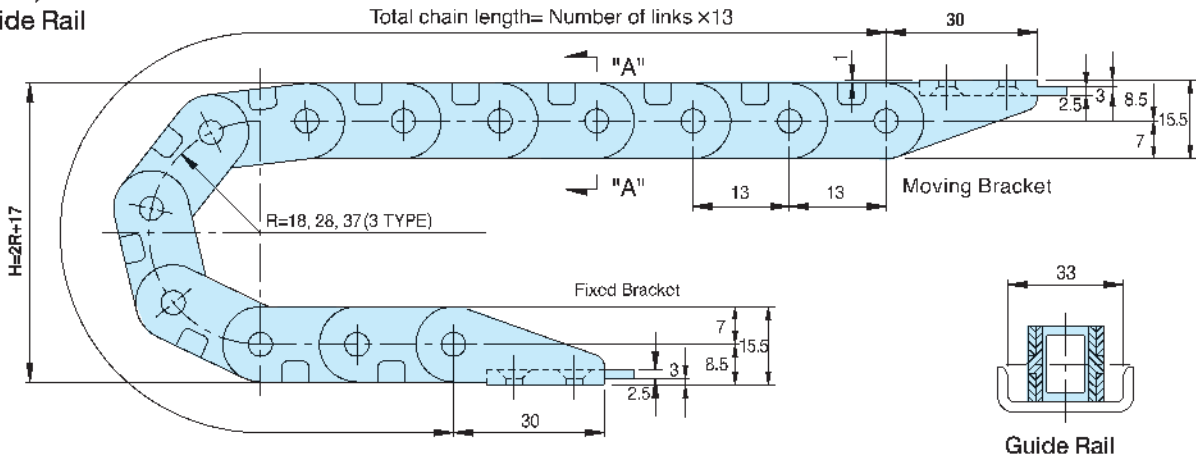
Moving Bracket

Order Example (주문예)

# HSP 0130-2B

HSP0130-2B 28R 1000L 7SETS  
 Type Radius Length Q'ty

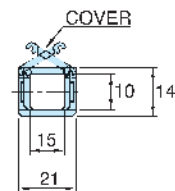
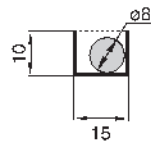
Chain, Guide Rail



• Length  $L = \frac{S}{2} + \pi R + 40$

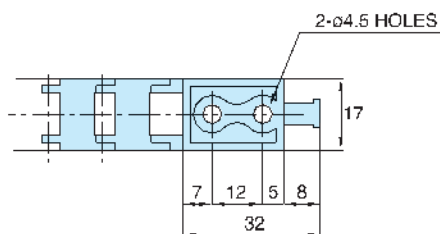
• Radius	R	18	28	37
• Height	H	53	71	91

Max. Cable Diameter Cross Section

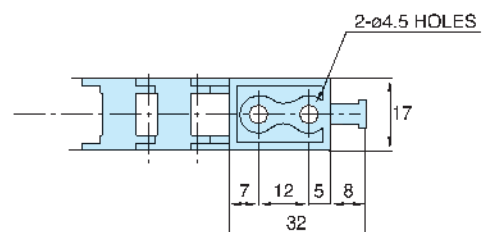


A-A Cross Section

Brackets



Fixed Bracket



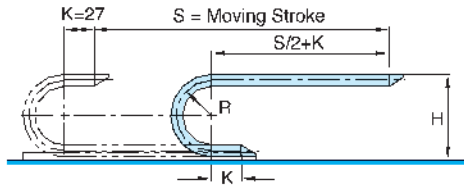
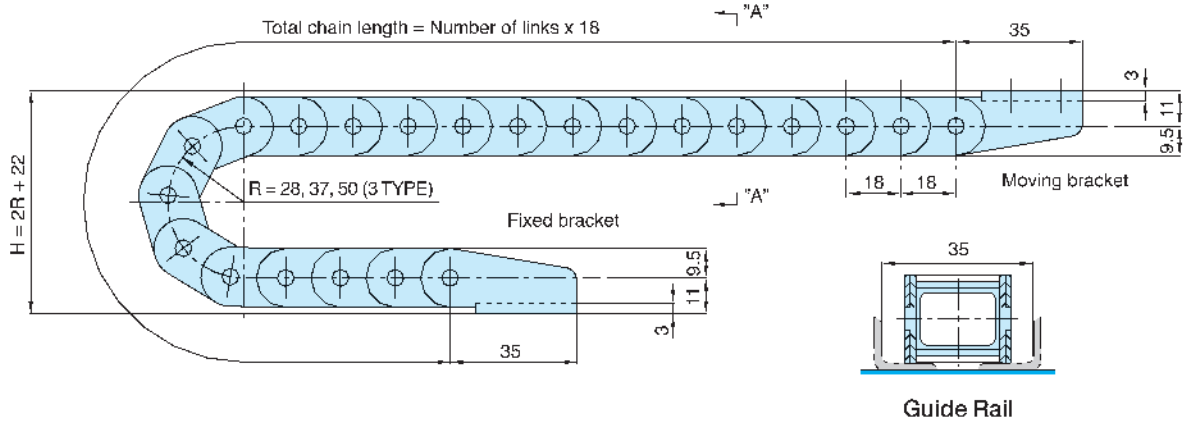
Moving Bracket

# HSP 0180-1

Order Example (주문예)

HSP0180-1	50R	1000L	3SETS
Type	Radius	Length	Q'ty

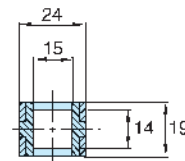
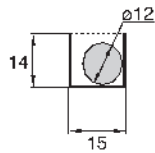
Chain, Guide Rail



• Length  $L = \frac{S}{2} + \pi R + 54$

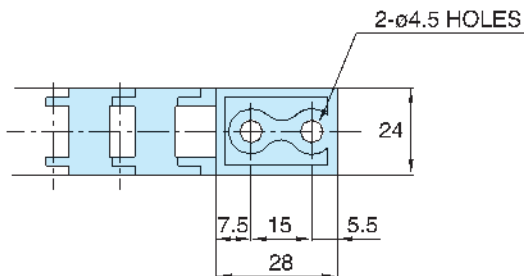
• Radius	R	28	37	50
• Height	H	78	96	122

Max. Cable Diameter Cross Section

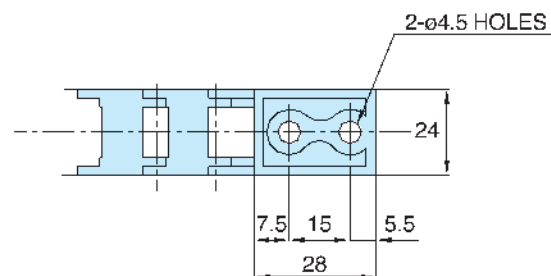


A-A Cross Section

Brackets



Fixed Bracket



Moving Bracket

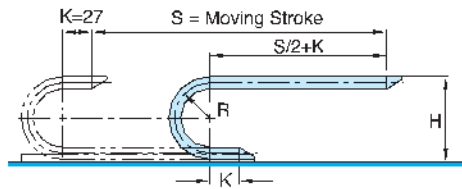
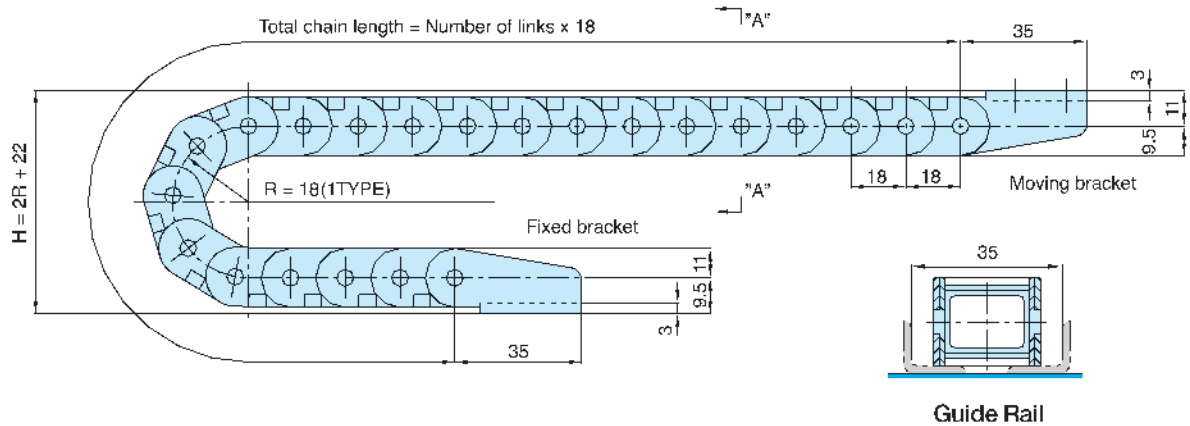


# HSP 0180-1B

Order Example (주문예)

HSP0180-1B	50R	1000L	3SETS
Type	Radius	Length	Q'ty

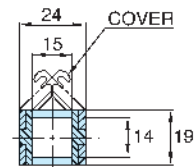
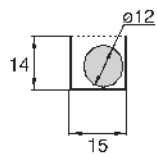
Chain, Guide Rail



• Length  $L = \frac{S}{2} + \pi R + 54$

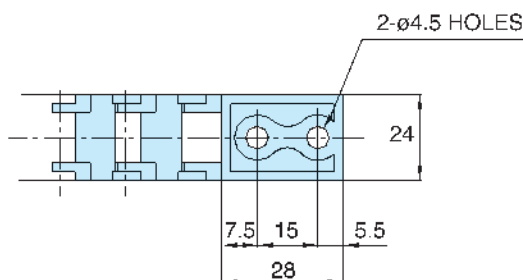
• Radius	R	18
• Height	H	58

Max. Cable Diameter Cross Section

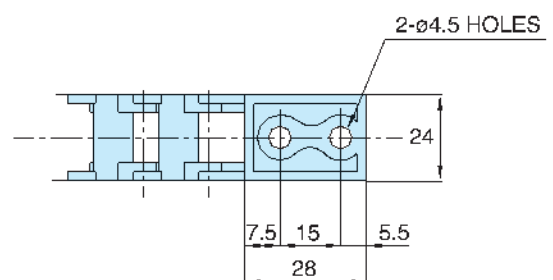


A-A Cross Section

Brackets



Fixed Bracket



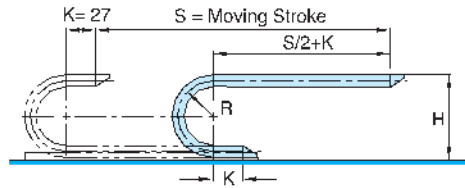
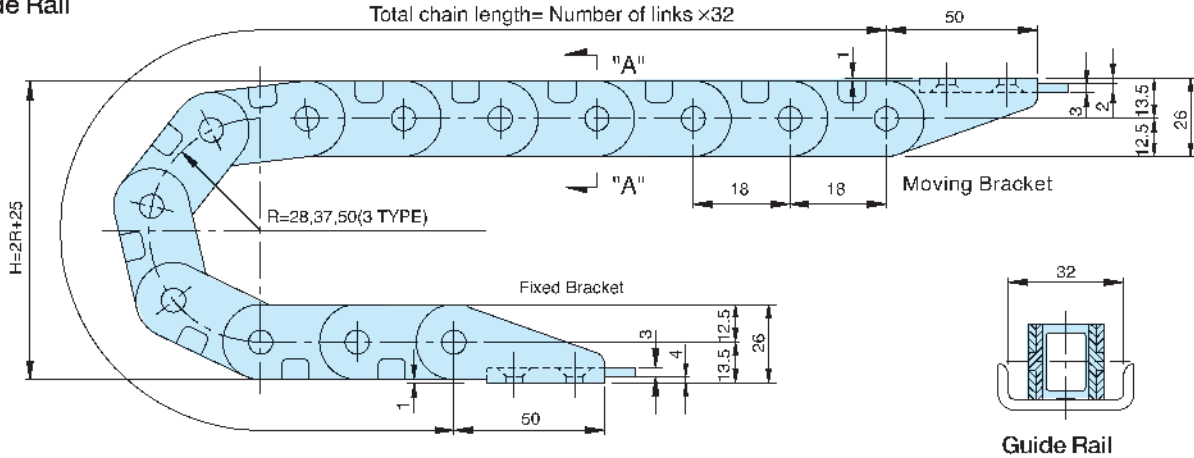
Moving Bracket

Order Example (주문예)

# HSP 0180-1BN

HSP0180-1BN 28R 1000L 3SETS  
 Type Radius Length Q'ty

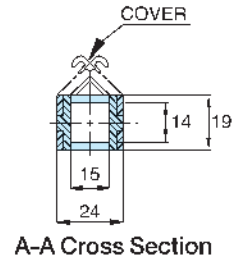
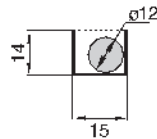
Chain, Guide Rail



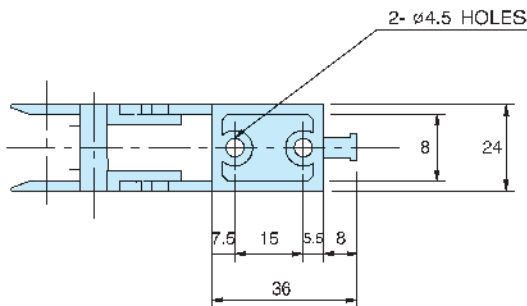
• Length  $L = \frac{S}{2} + \pi R + 54$

• Radius	R	28	37	50
• Height	H	78	96	122

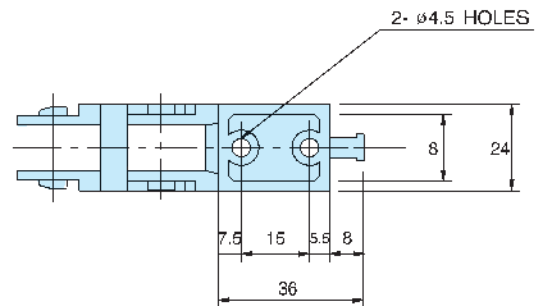
Max. Cable Diameter Cross Section



Brackets



Fixed Bracket



Moving Bracket

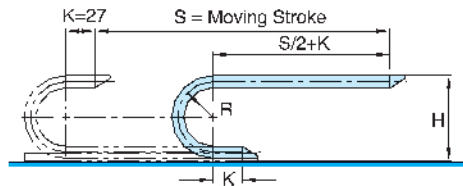
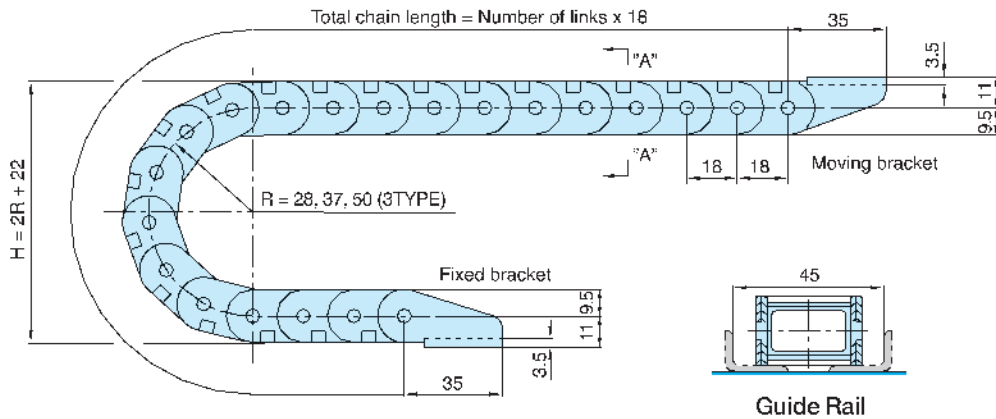
HSP

# HSP 0180-2B

Order Example (주문예)

HSP0180-2B	50R	1500L	3SETS
Type	Radius	Length	Q'ty

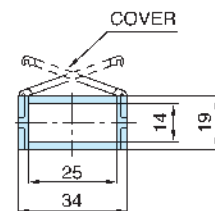
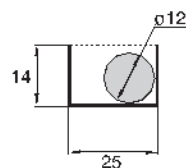
Chain, Guide Rail



• Length  $L = \frac{S}{2} + \pi R + 54$

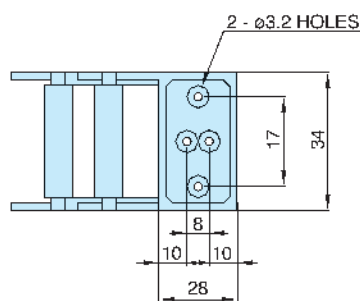
• Radius	R	28	37	50
• Height	H	78	96	122

Max. Cable Diameter Cross Section

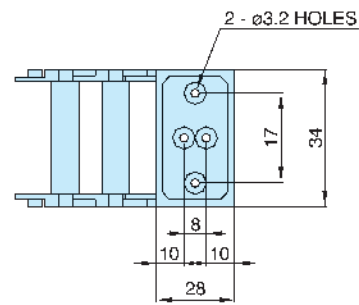


A-A Cross Section

Brackets



Fixed Bracket



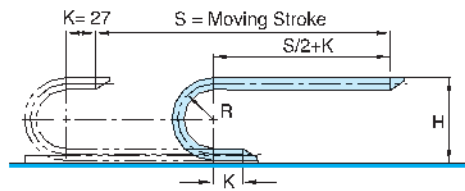
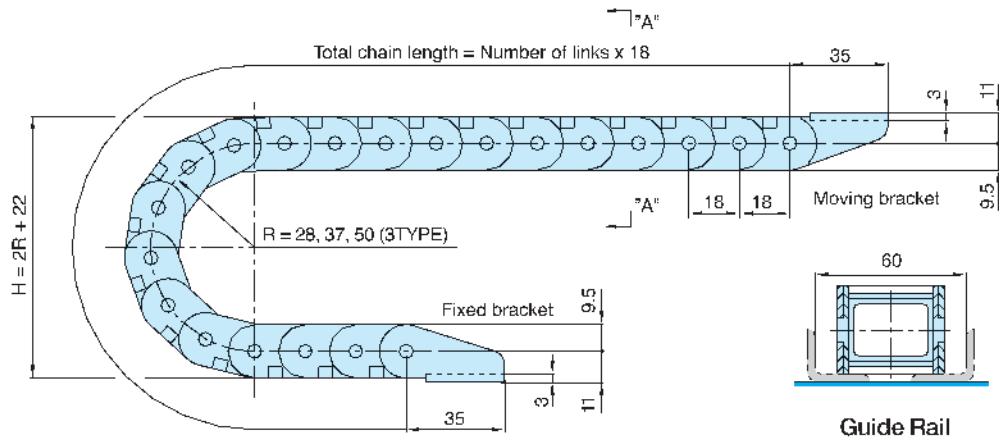
Moving Bracket

# HSP 0180-3B

Order Example (주문예)

HSP0180-3B	50R	1000L	3SETS
Type	Radius	Length	Q'ty

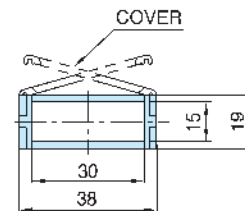
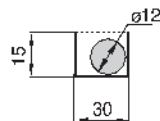
Chain, Guide Rail



• Length  $L = \frac{S}{2} + \pi R + 54$

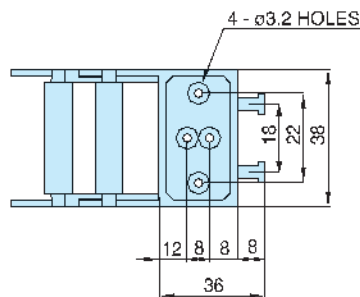
• Radius	R	28	37	50
• Height	H	78	96	122

Max. Cable Diameter Cross Section

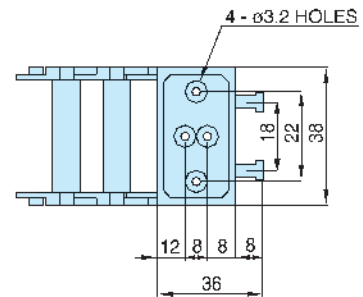


A-A Cross Section

Brackets



Fixed Bracket



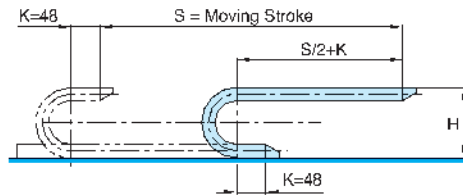
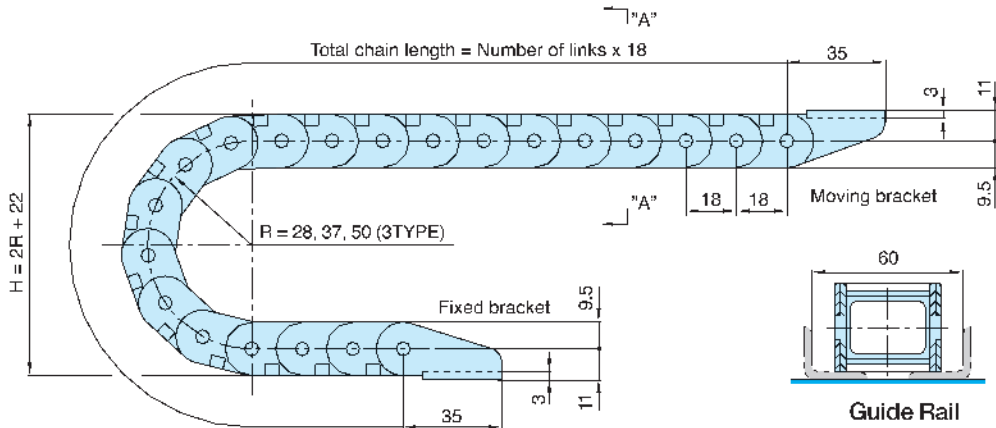
Moving Bracket

# HSP 0180-4B

Order Example (주문예)

HSP0180-4B	50R	1000L	3SETS
Type	Radius	Length	Q'ty

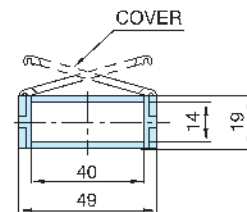
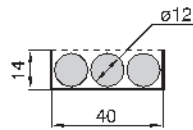
Chain, Guide Rail



• Length  $L = \frac{S}{2} + \pi R + 54$

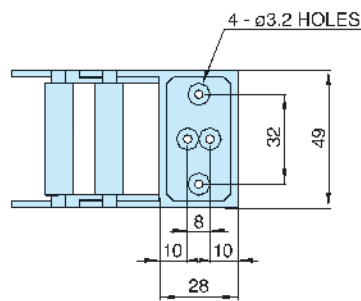
• Radius	R	28	37	50
• Height	H	78	96	122

Max. Cable Diameter Cross Section

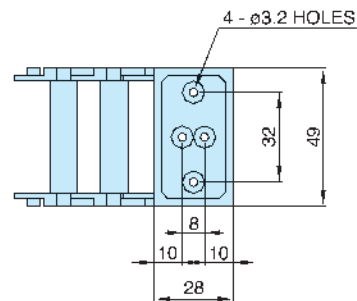


A-A Cross Section

Brackets



Fixed Bracket



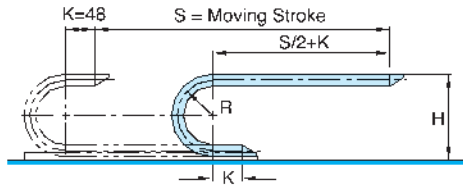
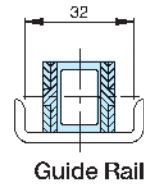
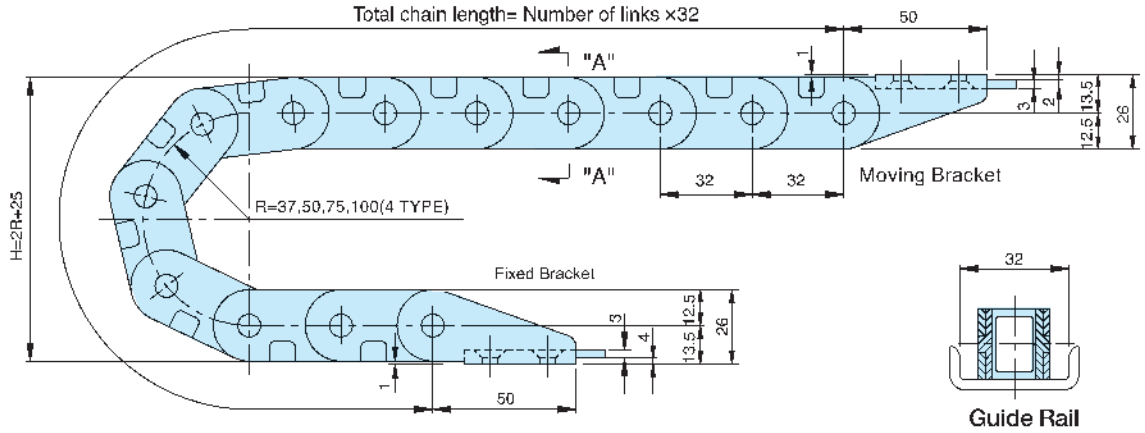
Moving Bracket

# HSP 0320-1BN

Order Example (주문예)

HSP0320-2BN 50R 2000L 3SETS  
 Type Radius Length Q'ty

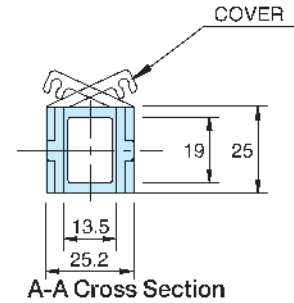
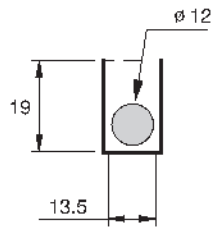
Chain, Guide Rail



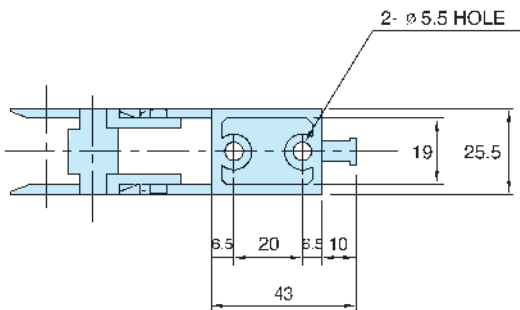
Length  $L = \frac{S}{2} + \pi R + 96$

Radius	R	37	50	75	100
Height	H	99	125	175	225

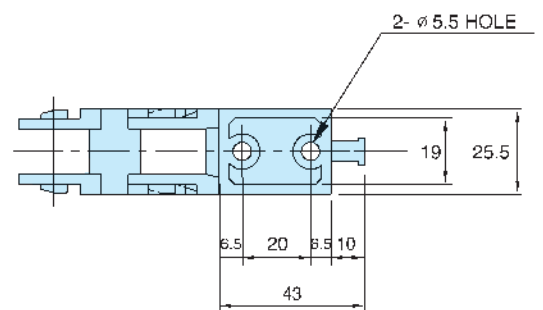
Max. Cable Diameter Cross Section



Brackets



Fixed Bracket



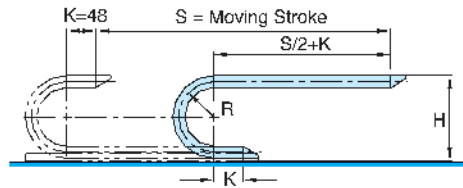
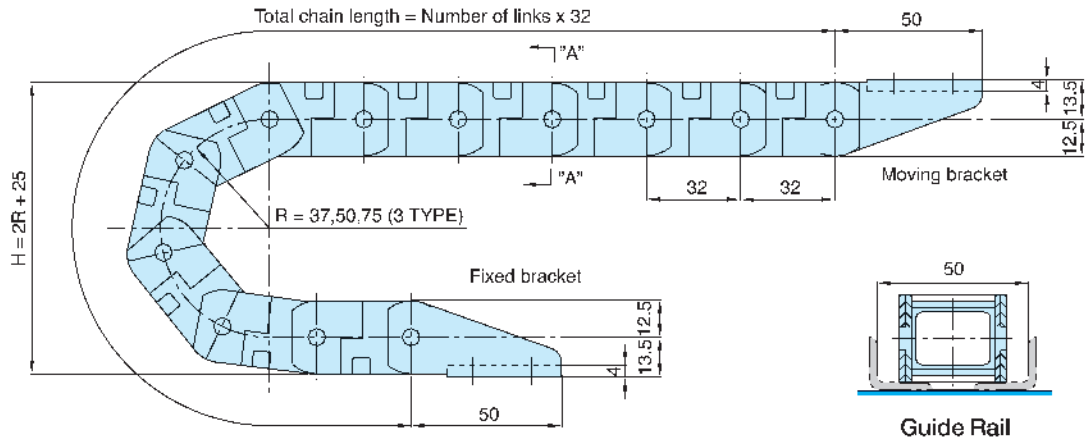
Moving Bracket

Order Example (주문예)

# HSP 0320-2B

HSP0320-2B 75R 2000L 3SETS  
 Type Radius Length Q'ty

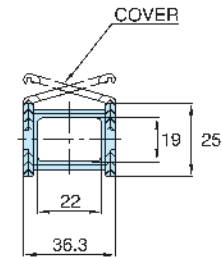
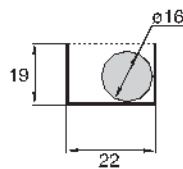
Chain, Guide Rail



• Length  $L = \frac{S}{2} + \pi R + 96$

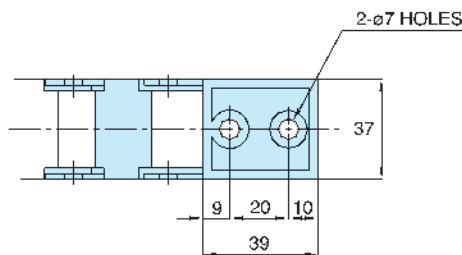
• Radius	R	37	50	75
• Height	H	99	125	175

Max. Cable Diameter Cross Section

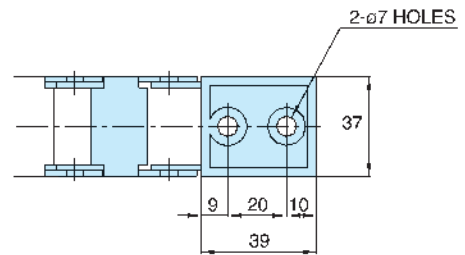


A-A Cross Section

Brackets



Fixed Bracket



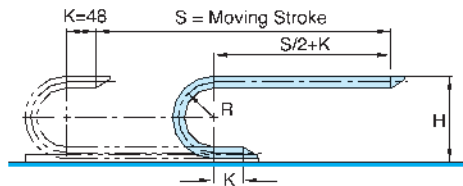
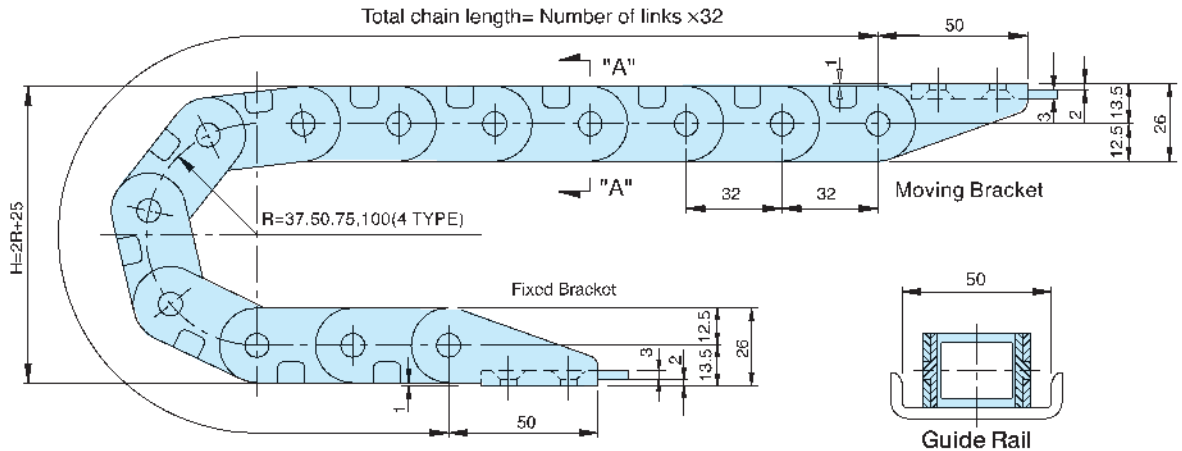
Moving Bracket

# HSP 0320-2BN

Order Example (주문예)

HSP0320-2BN 75R 1000L 3SETS  
 Type Radius Length Q'ty

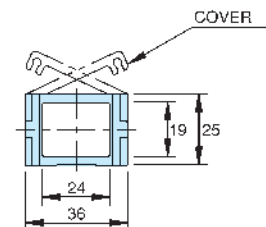
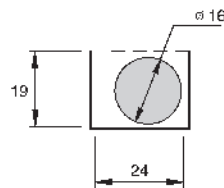
Chain, Guide Rail



Length  $L = \frac{S}{2} + \pi R + 96$

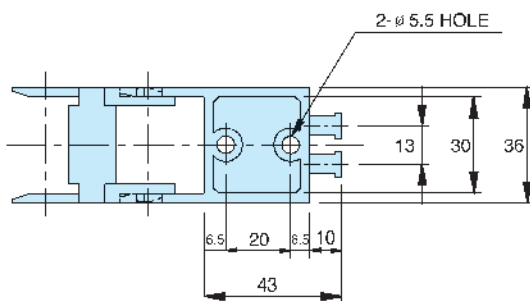
Radius	R	37	50	75	100
Height	H	99	125	175	225

Max. Cable Diameter Cross Section

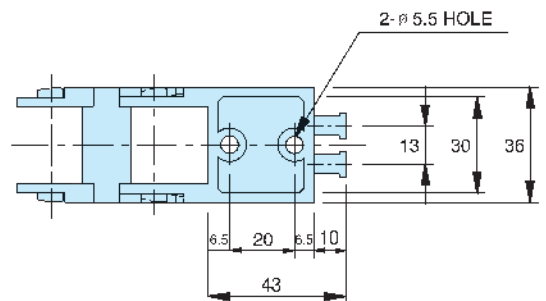


A-A Cross Section

Brackets



Fixed Bracket



Moving Bracket

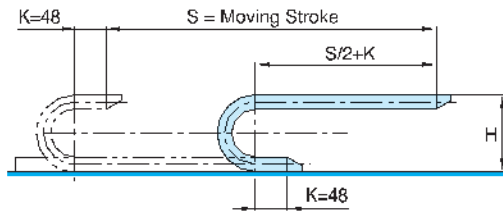
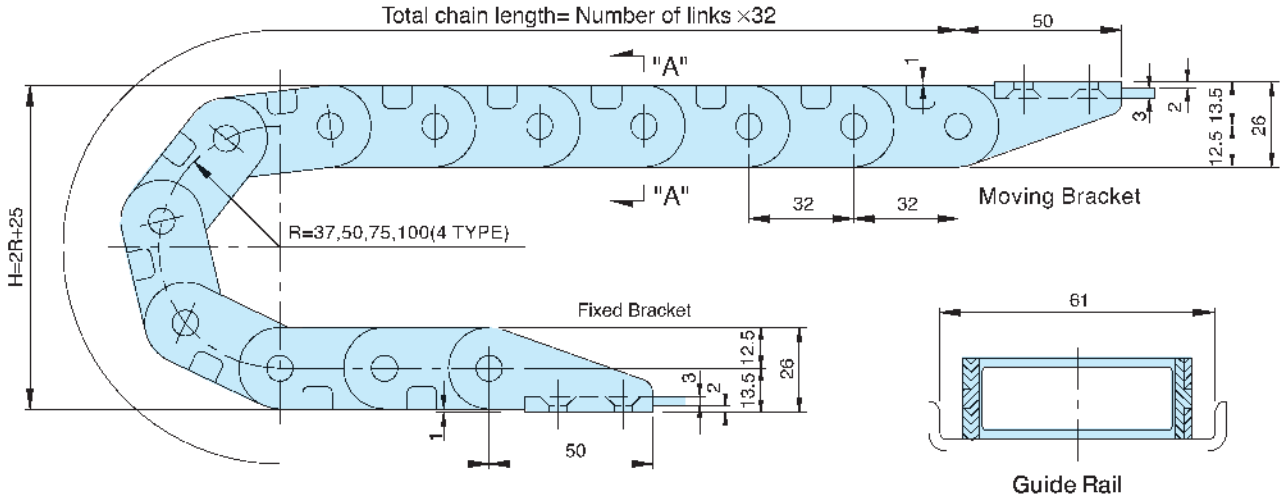


Order Example (주문예)

# HSP 0320-35B

HSP0320-35B 37R 2000L 10SETS  
 Type Radius Length Q'ty

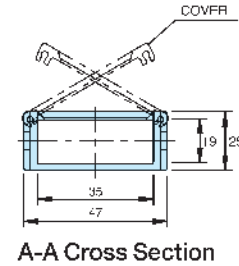
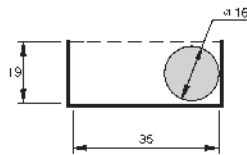
Chain, Guide Rail



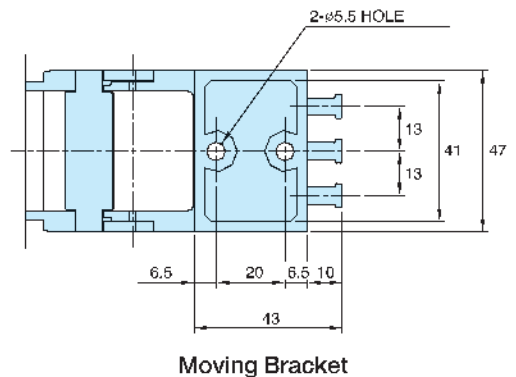
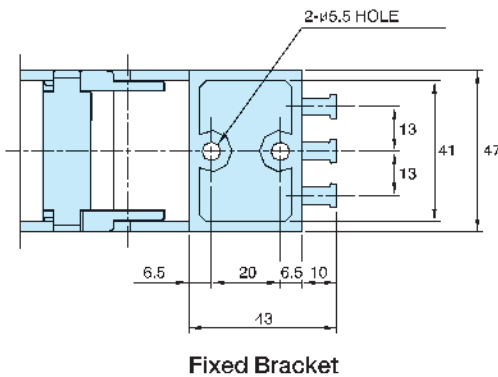
• Length  $L = \frac{S}{2} + \pi R + 96$

• Radius	R	37	50	75	100
• Height	H	99	125	175	225

Max. Cable Diameter Cross Section



Brackets



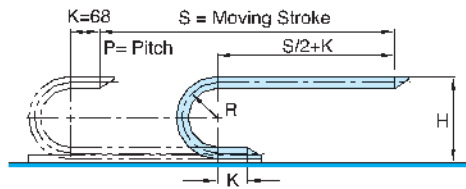
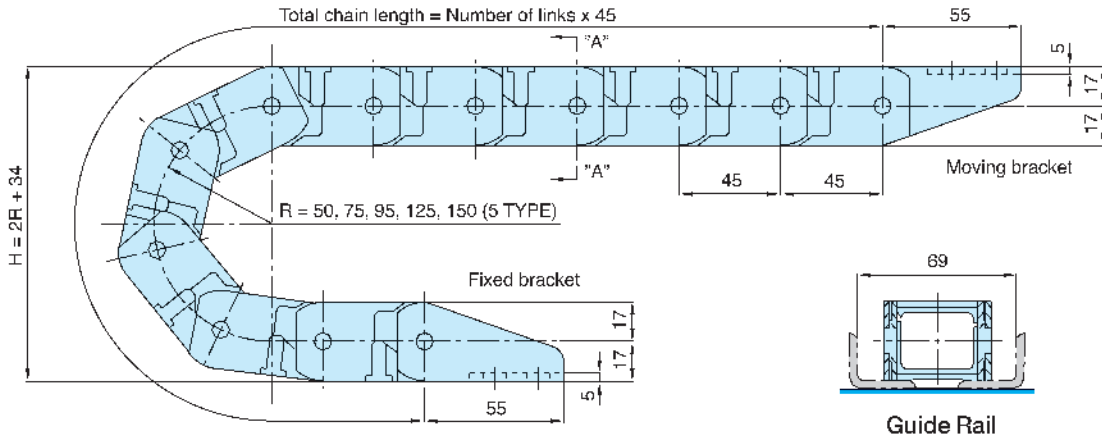


Order Example (주문예)

# HSP 0450-1B

HSP0450-1B 150R 2000L 3SETS  
 Type Radius Length Q'ty

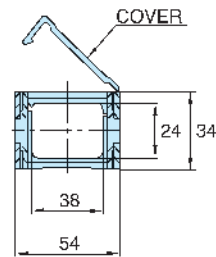
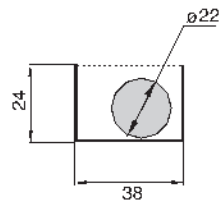
Chain, Guide Rail



• Length  $L = \frac{S}{2} + \pi R + 136$

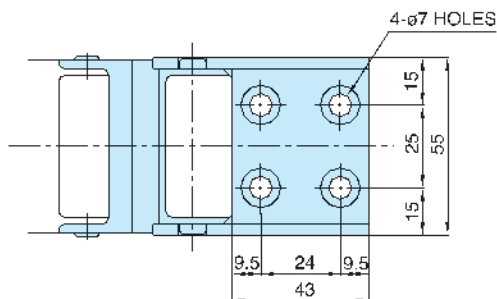
• Radius	R	50	75	95	125	150
• Height	H	134	184	224	284	334

Max. Cable Diameter Cross Section

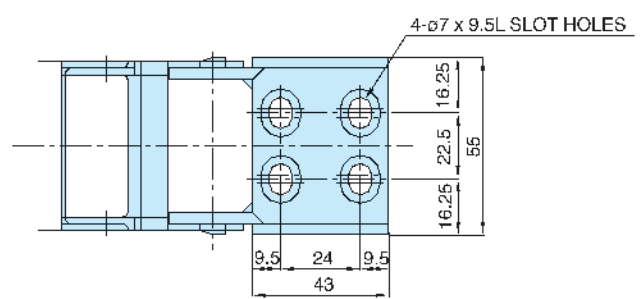


A-A Cross Section

Brackets



Fixed Bracket



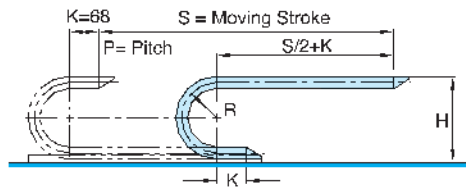
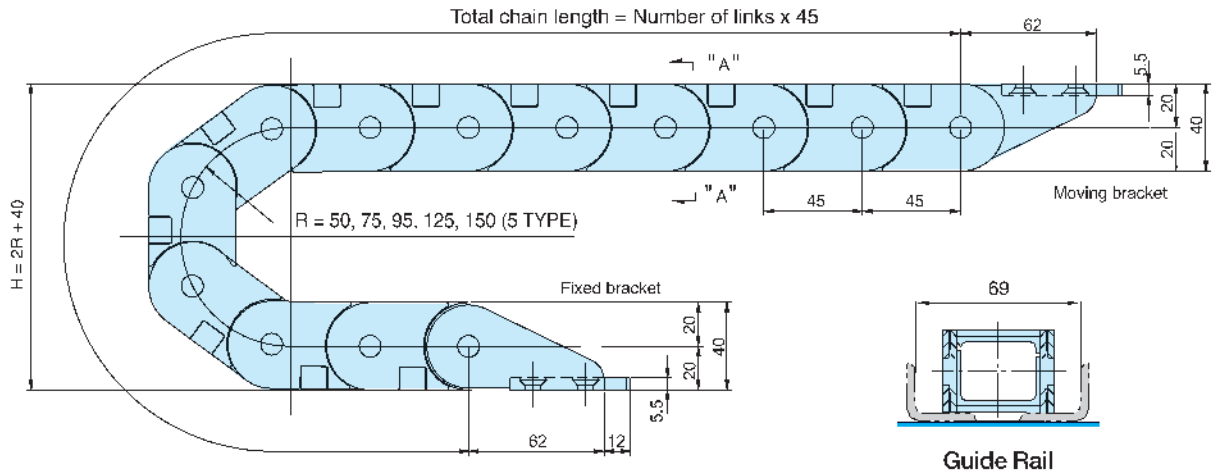
Moving Bracket

# HSP 0450-1BN

Order Example (주문예)

HSP0450-1BN 150R 2000L 3SETS  
 Type Radius Length Q'ty

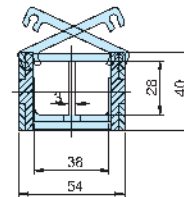
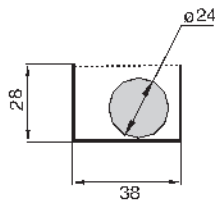
Chain, Guide Rail



• Length  $L = \frac{S}{2} + \pi R + 136$

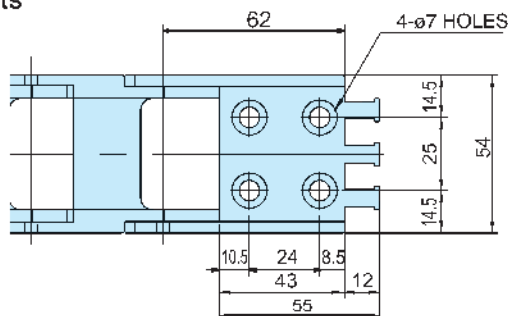
• Radius	R	50	75	95	125	150
• Height	H	140	190	230	290	340

Max. Cable Diameter Cross Section

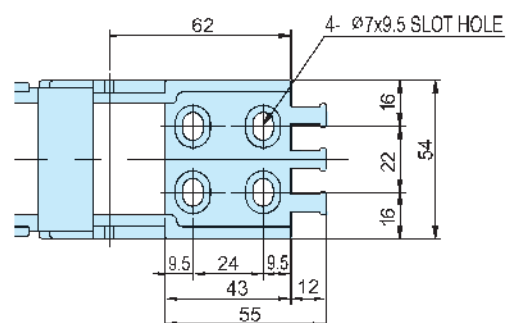


A-A Cross Section

Brackets



Fixed Bracket



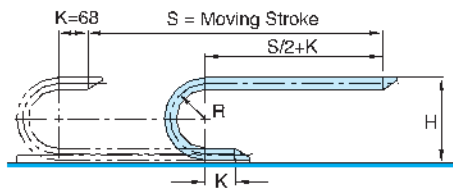
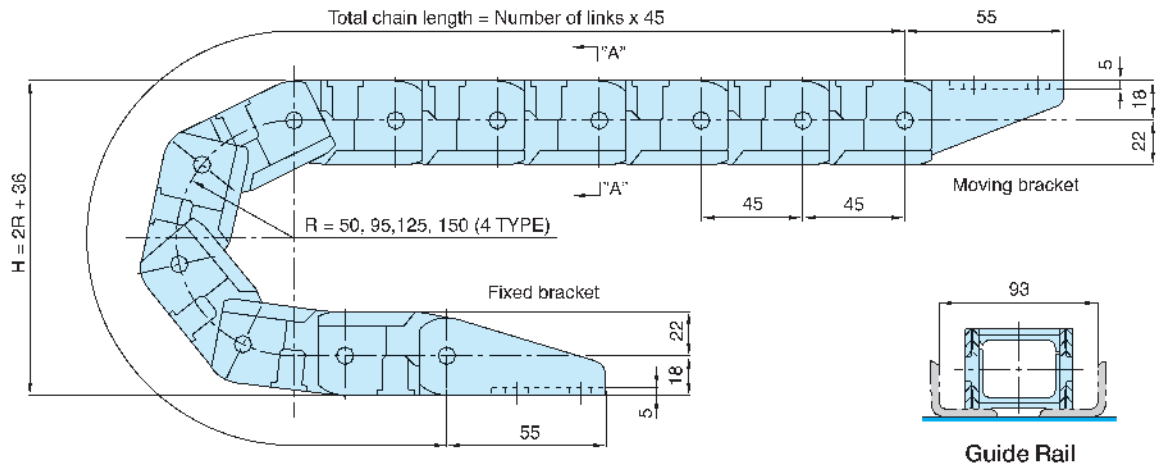
Moving Bracket

# HSP 0450-2B

Order Example (주문예)

HSP0450-2B 150R 2000L 3SETS  
 Type Radius Length Q'ty

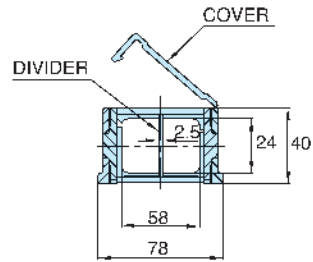
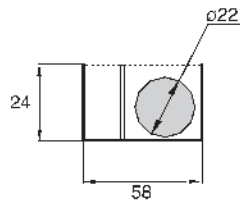
Chain, Guide Rail



• Length  $L = \frac{1}{2}S + \pi R + 136$

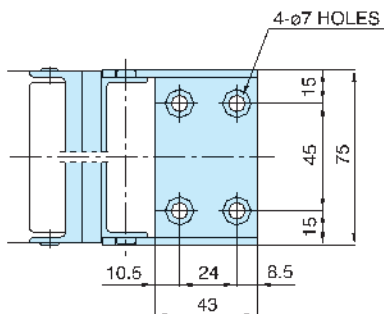
• Radius	R	50	95	125	150
• Height	H	136	226	286	336

Max. Cable Diameter Cross Section

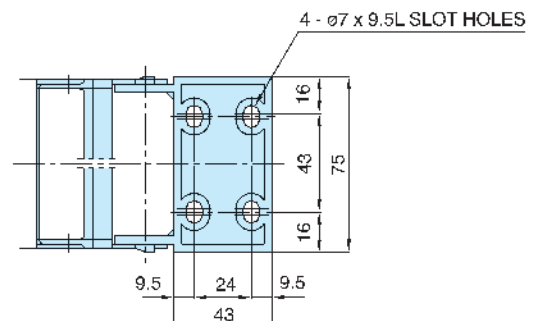


A-A Cross Section

Brackets



Fixed Bracket



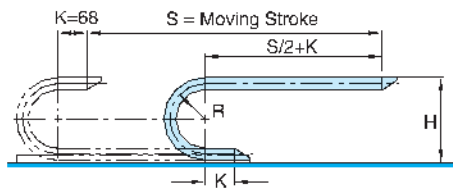
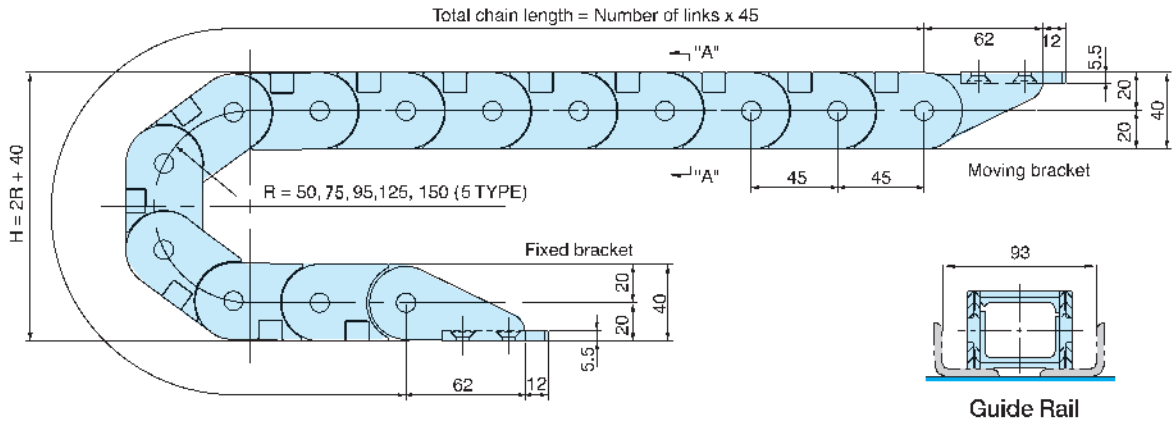
Moving Bracket

# HSP 0450-2BN

Order Example (주문예)

HSP0450-2BN	150R	2000L	3SETS
Type	Radius	Length	Q'ty

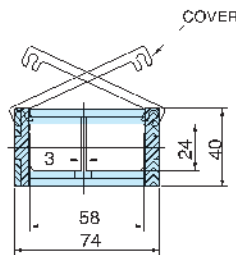
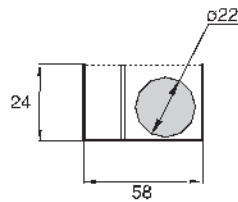
Chain, Guide Rail



• Length  $L = \frac{S}{2} + \pi R + 136$

• Radius	R	50	75	95	125	150
• Height	H	140	190	230	290	340

Max. Cable Diameter Cross Section

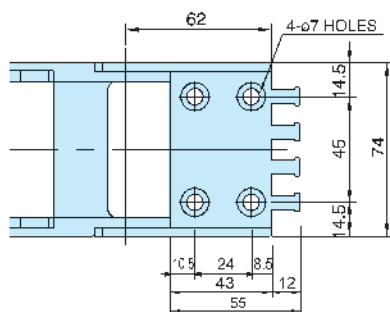


A-A Cross Section

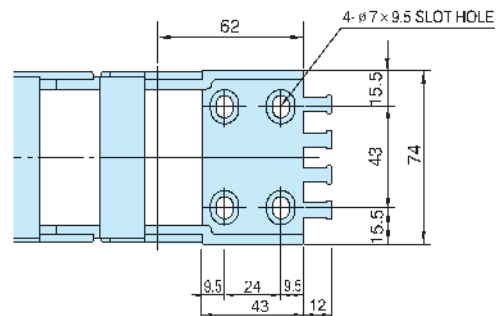


HSP 0450-2BNC

Brackets



Fixed Bracket



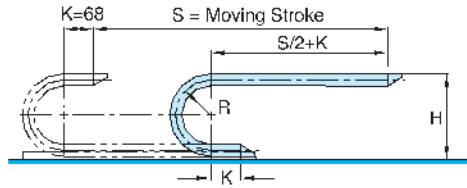
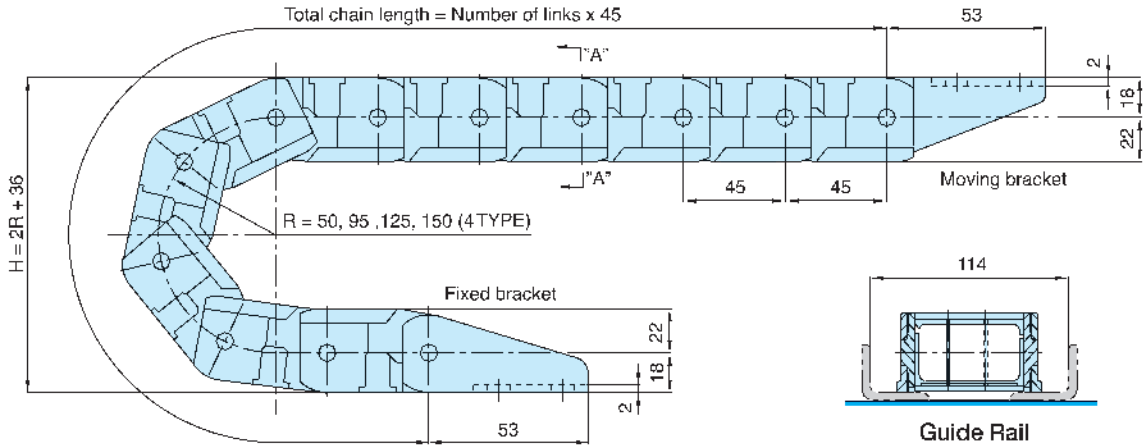
Moving Bracket

# HSP 0450-3B

Order Example (주문예)

HSP0450-3B 150R 2000L 3SETS  
 Type Radius Length Q'ty

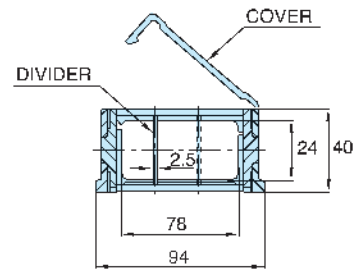
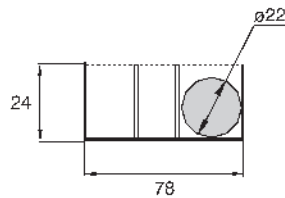
Chain, Guide Rail



• Length  $L = \frac{S}{2} + \pi R + 136$

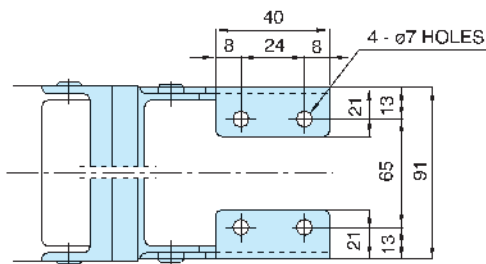
• Radius	R	50	95	125	150
• Height	H	136	226	286	336

Max. Cable Diameter Cross Section

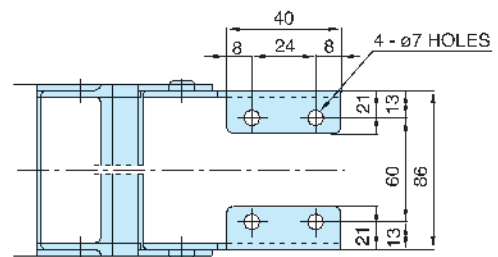


A-A Cross Section

Brackets



Fixed Bracket



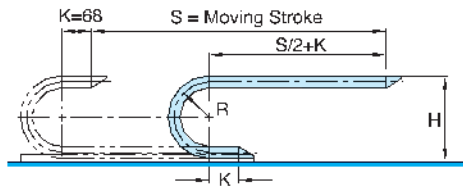
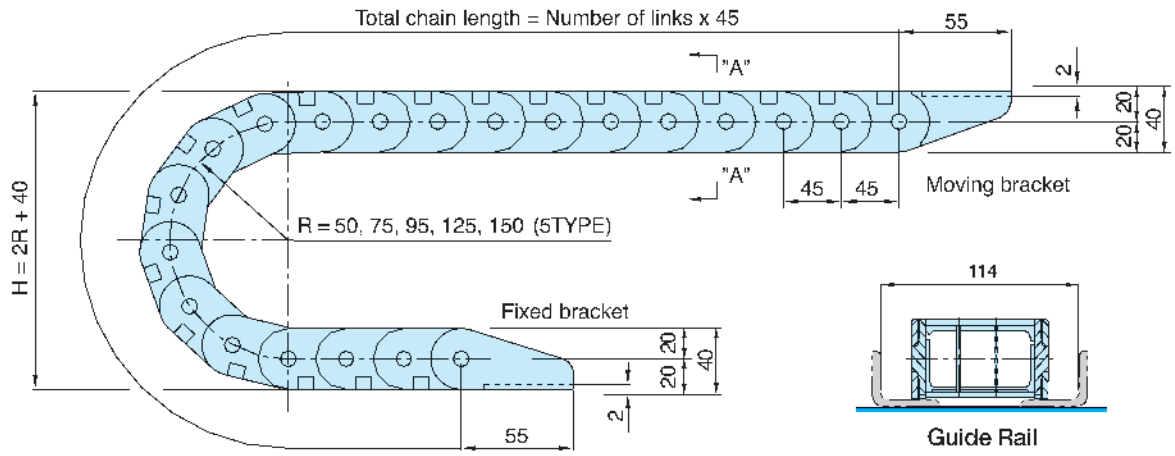
Moving Bracket

# HSP 0450-3BN

Order Example (주문예)

HSP0450-3BN 50R 2000L 3SETS  
 Type Radius Length Q'ty

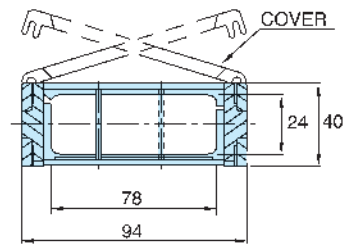
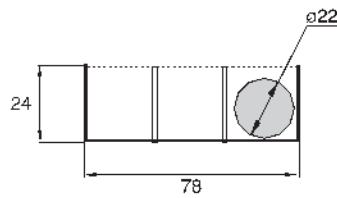
Chain, Guide Rail



• Length  $L = \frac{S}{2} + \pi R + 136$

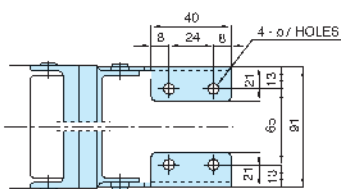
• Radius	R	50	75	95	125	150
• Height	H	140	190	230	290	340

Max, Cable Diameter Cross Section

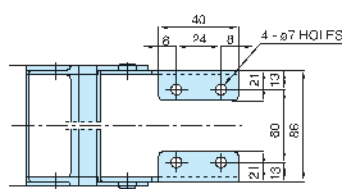


A-A Cross Section

Brackets (STEEL)

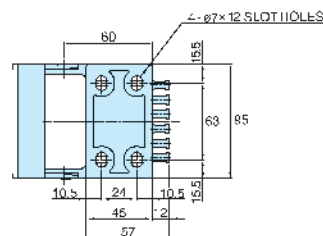


Fixed Bracket

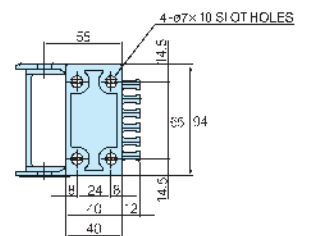


Moving Bracket

Brackets (PLASTIC)



Fixed Bracket



Moving Bracket

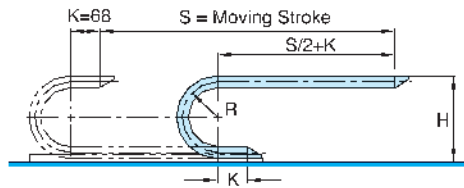
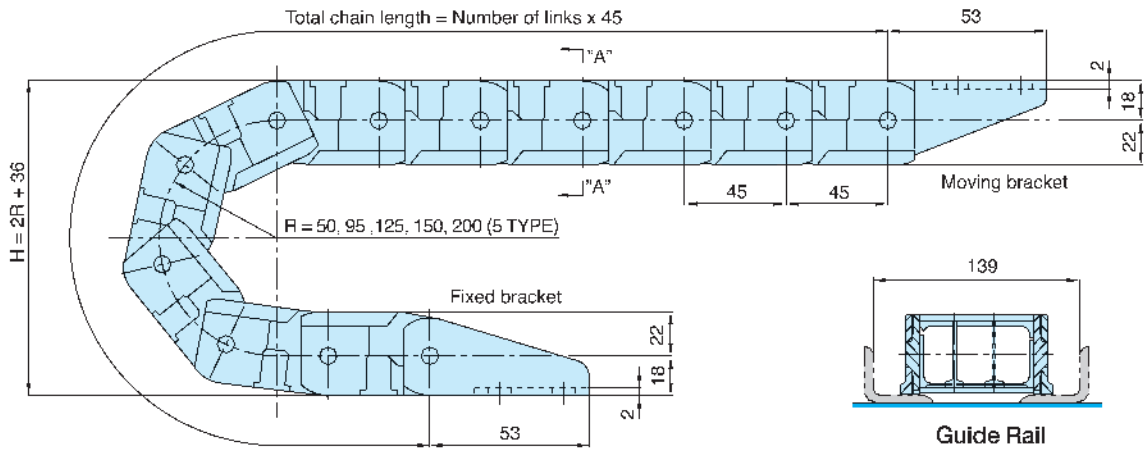


# HSP 0450-4B

Order Example (주문예)

HSP0450-4B 150R 3000L 3SETS  
 Type Radius Length Q'ty

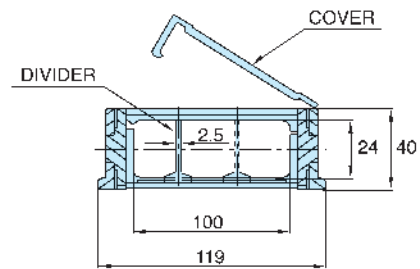
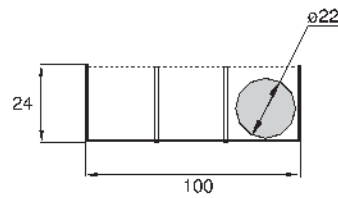
Chain, Guide Rail



• Length  $L = \frac{S}{2} + \pi R + 136$

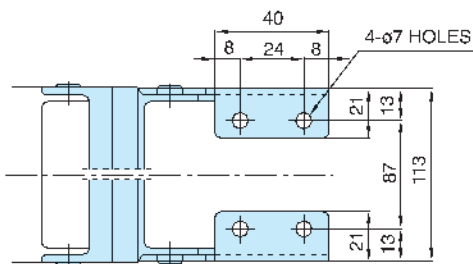
• Radius	R	50	95	125	150	200
• Height	H	136	226	286	336	436

Max, Cable Diameter Cross Section

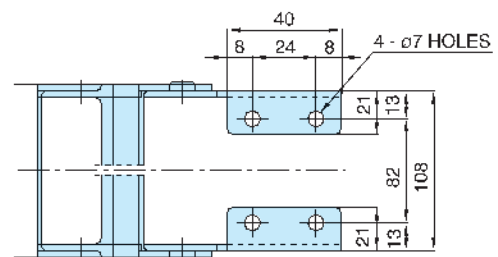


A-A Cross Section

Brackets



Fixed Bracket



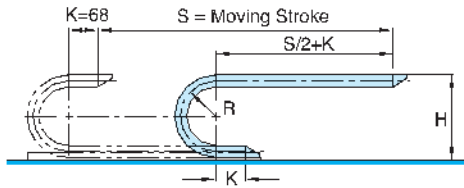
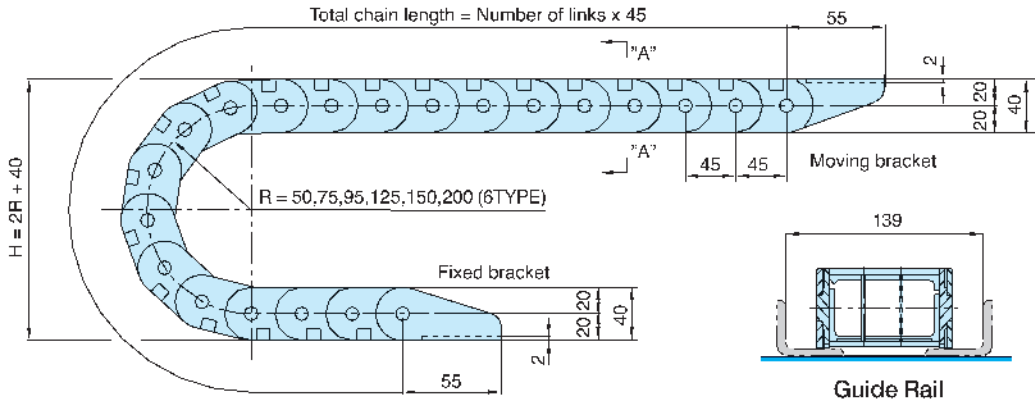
Moving Bracket

# HSP 0450-4BN

Order Example (주문예)

HSP0450-4BN 150R 3000L 3SETS  
 Type Radius Length Q'ty

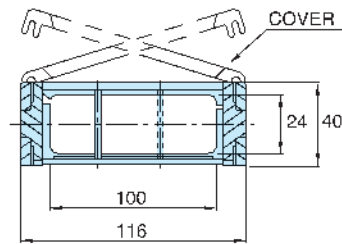
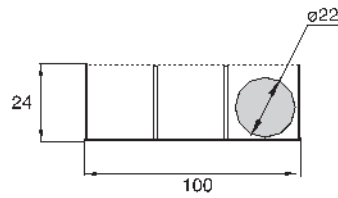
Chain, Guide Rail



• Length  $L = \frac{S}{2} + \pi R + 136$

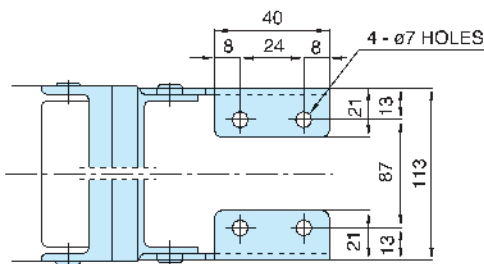
• Radius	R	50	75	95	125	150	200
• Height	H	140	190	226	290	340	440

Max. Cable Diameter Cross Section

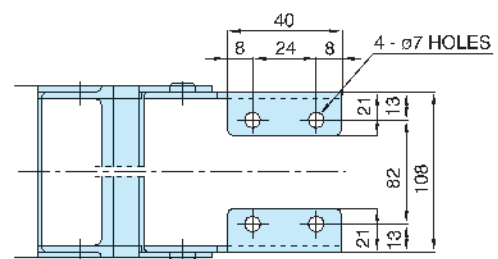


A-A Cross Section

Brackets



Fixed Bracket



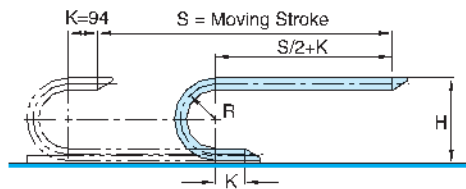
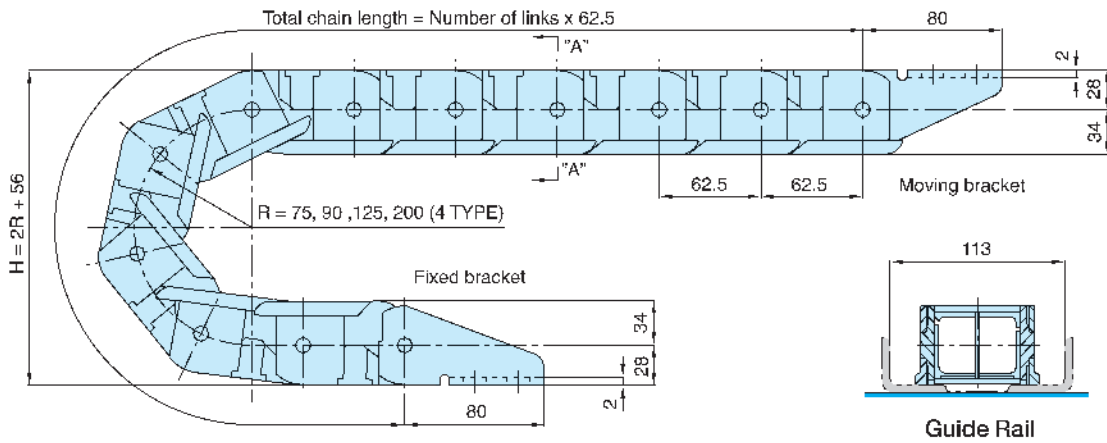
Moving Bracket

# HSP 0625-1B

Order Example (주문예)

HSP0625-1B	200R	2000L	3SETS
Type	Radius	Length	Q'ty

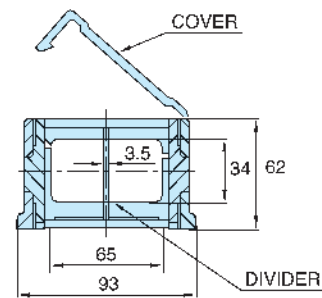
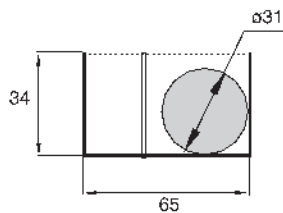
Chain, Guide Rail



• Length  $L = \frac{S}{2} + \pi R + 188$

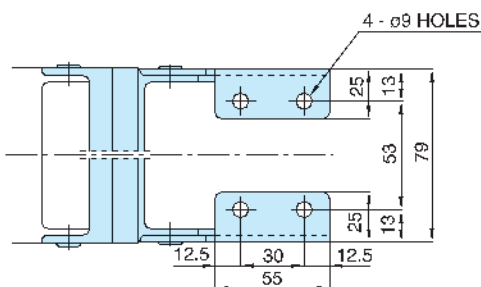
• Radius	R	75	90	125	200
• Height	H	206	236	306	456

Max. Cable Diameter Cross Section

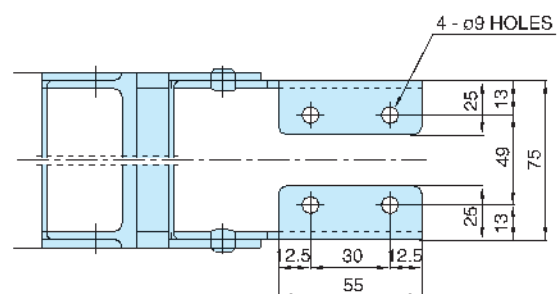


A-A Cross Section

Brackets



Fixed Bracket



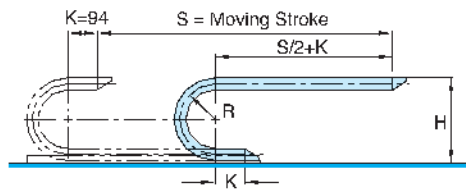
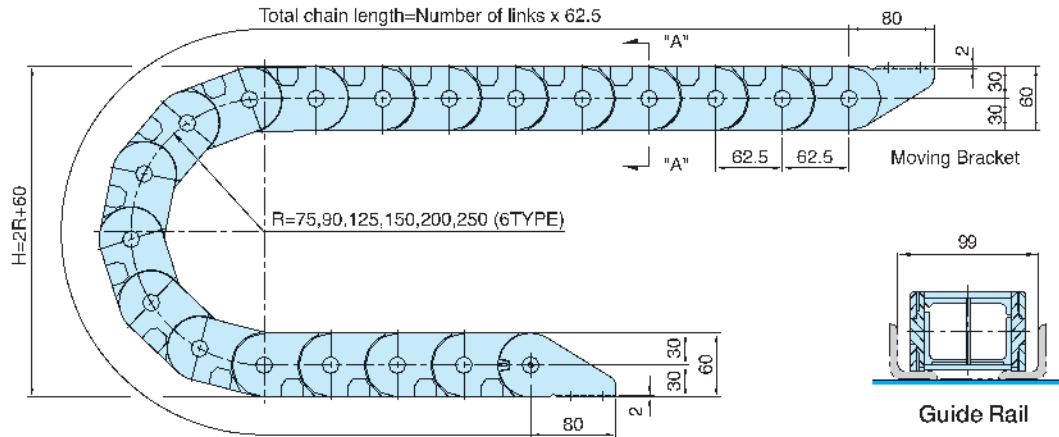
Moving Bracket

# HSP 0625-1BN

Order Example (주문예)

HSP0625-1BN 200R 2000L 3SETS  
 Type Radius Length Q'ty

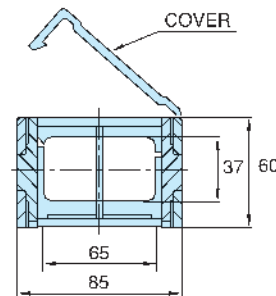
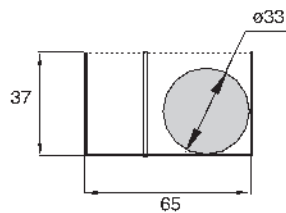
Chain, Guide Rail



• Length  $L = \frac{S}{2} + \pi R + 188$

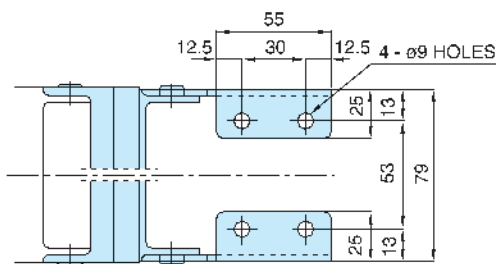
• Radius	R	75	90	125	150	200	250
• Height	H	210	240	310	360	460	560

Max. Cable Diameter Cross Section

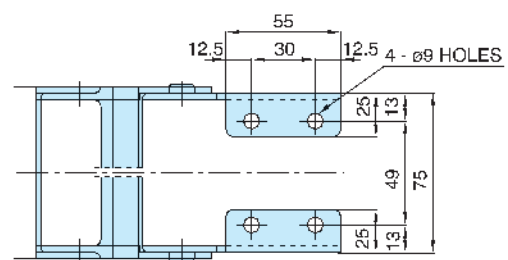


A-A Cross Section

Brackets



Fixed Bracket



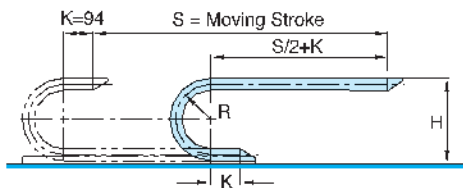
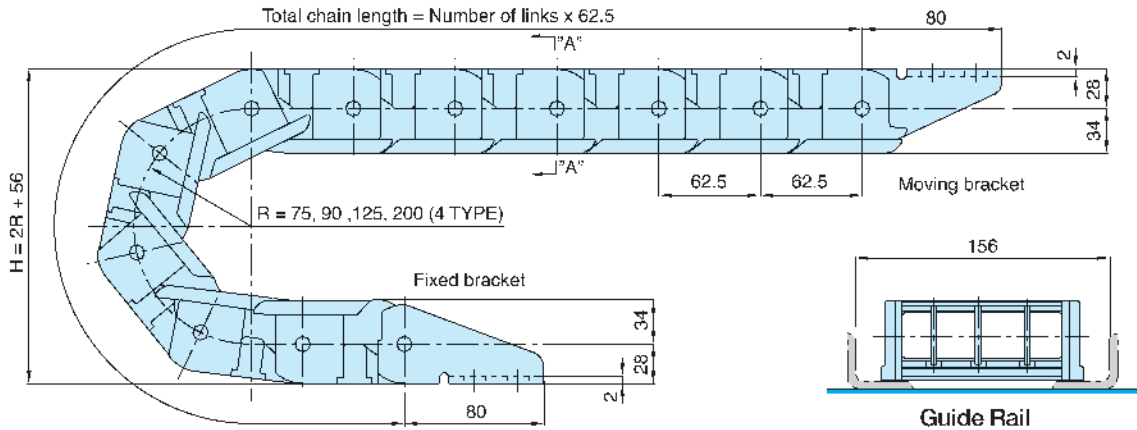
Moving Bracket

# HSP 0625-2B

Order Example (주문예)

HSP0625-2B	200R	2000L	3SETS
Type	Radius	Length	Q'ty

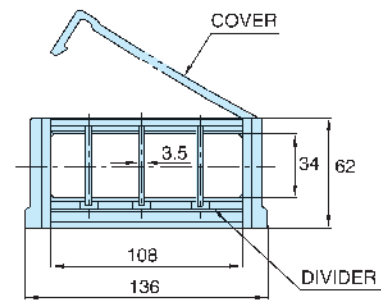
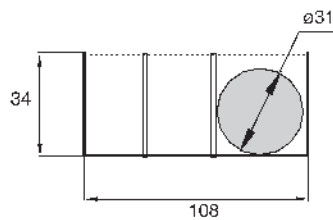
Chain, Guide Rail



• Length  $L = \frac{S}{2} + \pi R + 188$

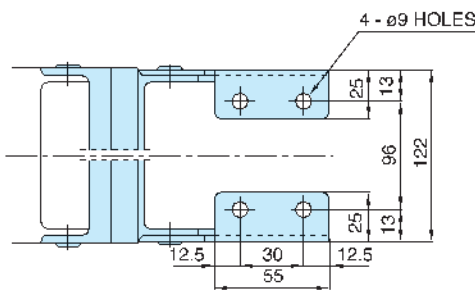
• Radius	R	75	90	125	200
• Height	H	206	236	306	456

Max. Cable Diameter Cross Section

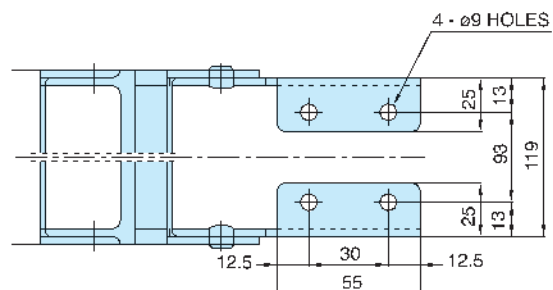


A-A Cross Section

Brackets



Fixed Bracket



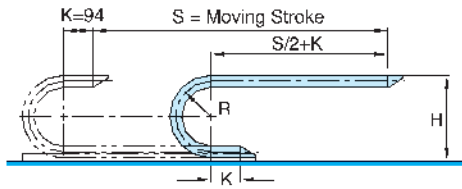
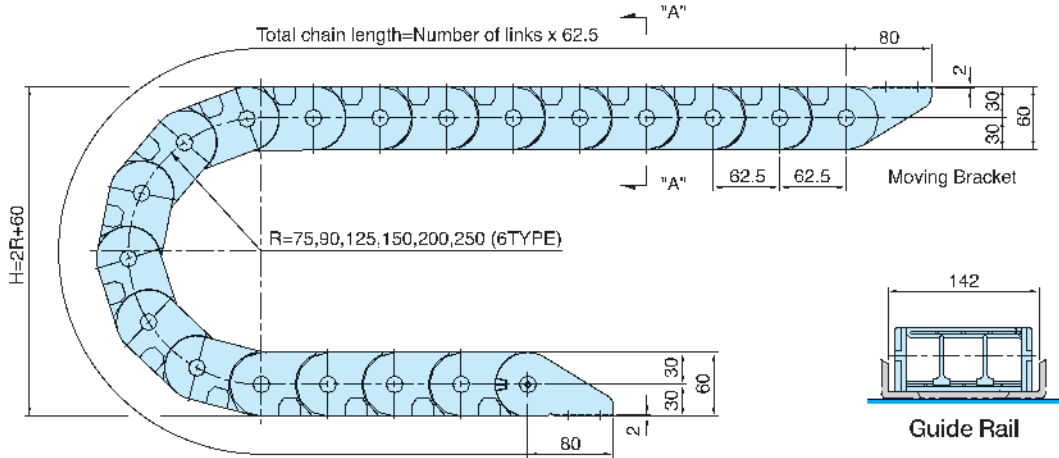
Moving Bracket

# HSP 0625-2BN

Order Example (주문예)

HSP0625-2BN 200R 2000L 3SETS  
 Type Radius Length Q'ty

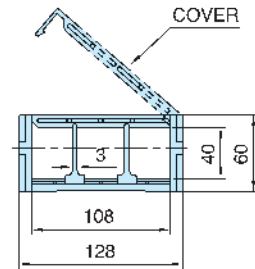
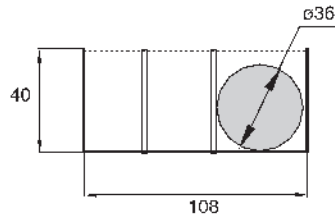
Chain, Guide Rail



• Length  $L = \frac{S}{2} + \pi R + 188$

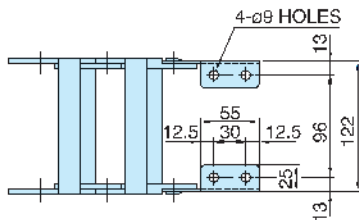
• Radius	R	75	90	125	150	200	250
• Height	H	210	240	310	360	460	560

Max. Cable Diameter Cross Section

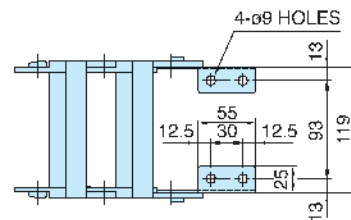


A-A Cross Section

Brackets

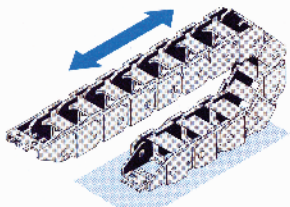


Fixed Bracket

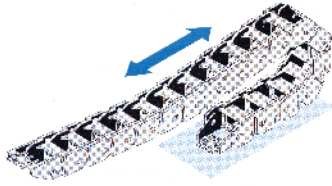


Moving Bracket

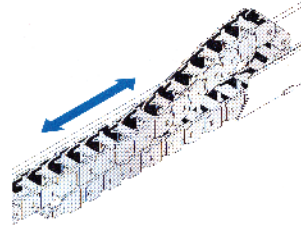
● 응용 예 Application Examples



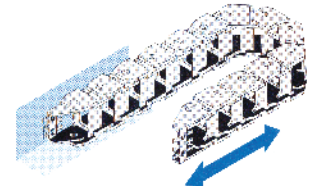
EBV 01



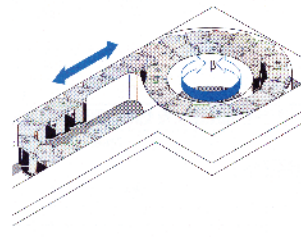
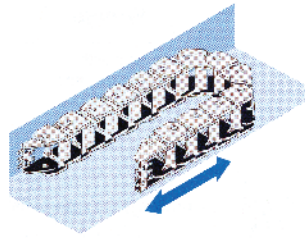
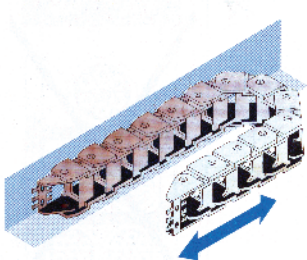
EBV 03



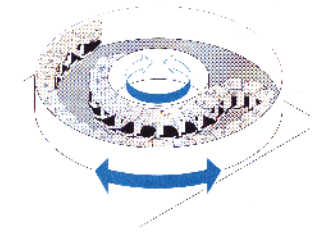
EBV 05



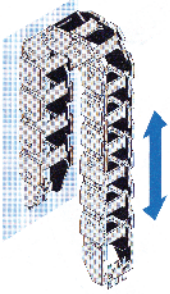
EBV 07



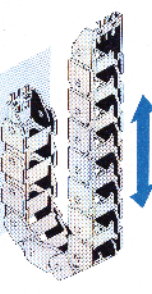
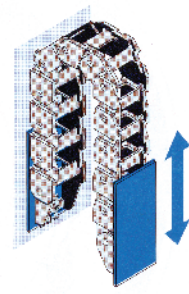
EBV 08



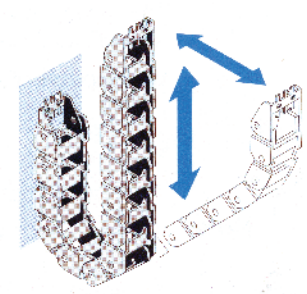
EBV 09



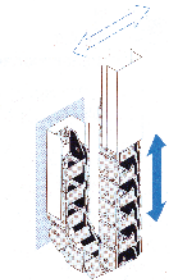
EBV 10



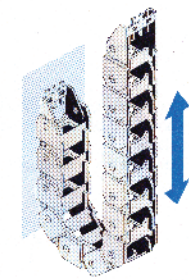
EBV 11



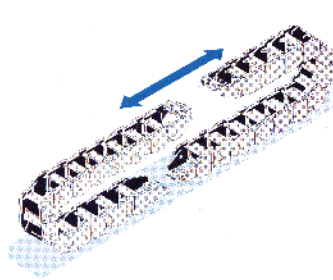
EBV 12



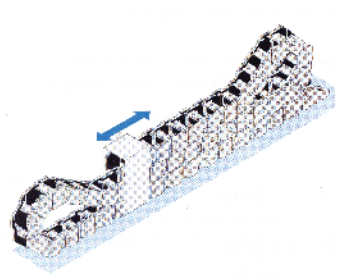
A2



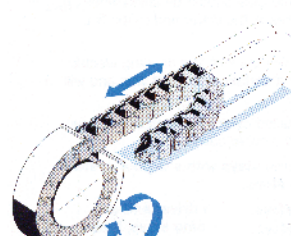
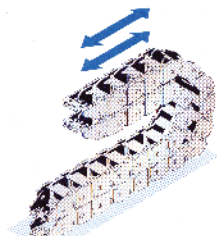
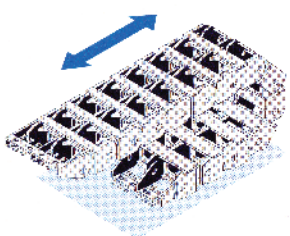
A3



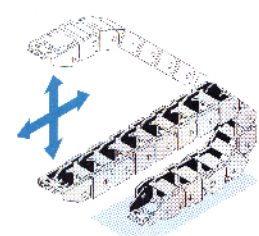
A4



EDV 15

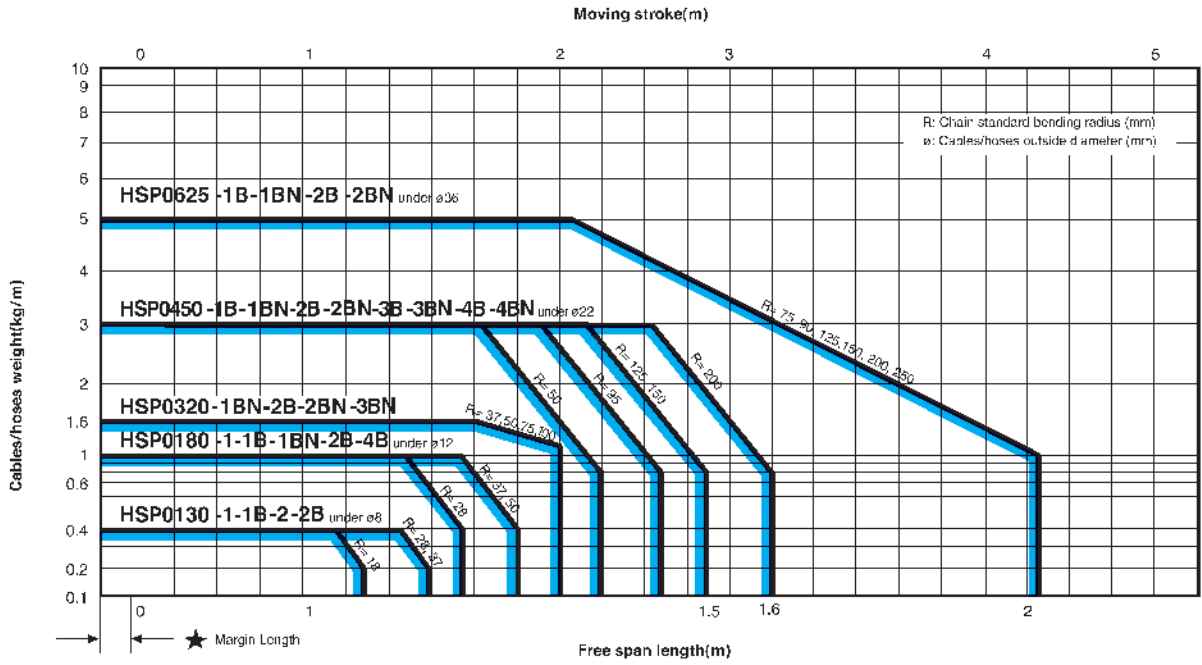


EBV 13

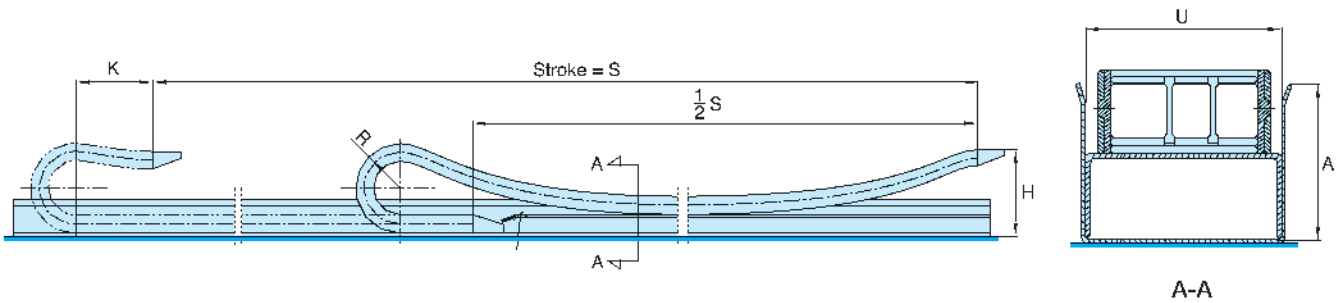


EBV 12

● 능력선도 (HSP) Capability Graph



● 외형치수 Dimension



Type	Stroke	Max. Supporter Weight	H	U (±1)	A	K
HSP 0450-1B(N)	20m	1.5kg/m	136	60	68	150~600
HSP 0450-2B(N)	20m	2 kg/m	138	88	80	200~700
HSP 0450-3B(N)	20m	2 kg/m	140	104	80	200~700
HSP 0450-4B(N)	20m	2.5kg/m	140	130	80	200~700
HSP 0625-1B(N)	20m	3 kg/m	210	103	124	300~900
HSP 0625-2B(N)	30m	3.5kg/m	210	146	124	300~900