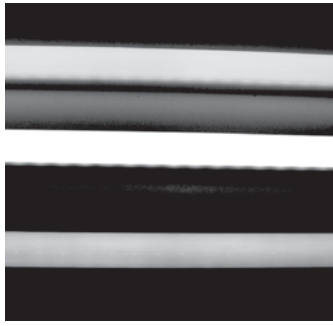


TECHNICAL SPECIFICATIONS SUPERVISION

VER. 1.0

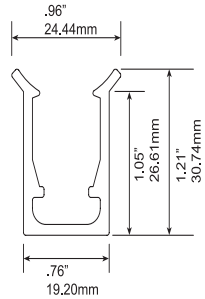
Border Light™



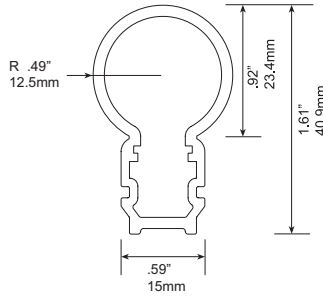
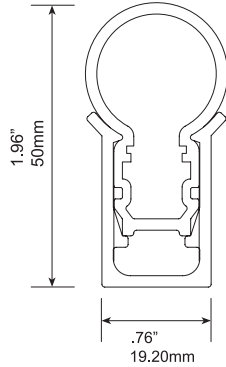
BORDER LIGHT



.98"
25mm



BORDER LIGHT TRACK



BORDER LIGHT TUBE

PROJECT: _____

TYPE: _____

VOLTAGE: _____

NOTES: _____

DESCRIPTION

Border Light is a neon alternative, low voltage, monochromatic, LED tube designed specifically for building perimeter lighting or linear lighting applications.

LEDs produce very little heat and have a long lamp life expectancy.

SPECIFICATION FEATURES

Energy Efficient:

One 12" (305mm) red segment uses 1.5 watts per foot for red, clear red, amber and orange.
3.2 watts per foot for white, green, and blue.

Maximum distance from power supply to first tube is 30 feet (9.1 m).
Power supplies are available in a range from 25 to 300 watts.

UL file No. E220835

Construction:

Tube : Acrylic DR™ - UV resistant, extremely durable
Track : Acrylic DR™ - UV resistant, extremely durable

* For non-illuminated border light - please contact factory for quote.

ORDERING INFORMATION

ASSEMBLY:

SVBL4-RED	Red	4Ft
SVBL8-RED	Red	8Ft
SVBL4-BLUE	Blue	4Ft.
SVBL8-BLUE	Blue	8Ft.
SVBL4-GREEN	Green	4Ft.
SVBL8-GREEN	Green	8Ft.
SVBL4-WHITE	White	4Ft.
SVBL8-WHITE	White	8Ft.
SVBL4-ORANGE	Orange	4Ft.
SVBL8-ORANGE	Orange	8Ft.
SVBL4-AMBER	Amber	4Ft.
SVBL8-AMBER	Amber	8Ft
SVBL4-YELLOW	Yellow	4Ft.
SVBL8-YELLOW	Yellow	8Ft

POWER SUPPLY:

EVPS25-	UL: 12VDC, 25 Watt power supply, UL Listed
EVPS60-12-UL:	12VDC, UL 60 W Class 2 UL LED power supply
EVPS60:	12VDC, 60 Watt power supply, ETL Listed
EVPS150:	12VDC, 150 Watt power supply, ETL Listed
EVPS320:	12VDC, 300 Watt power supply, ETL Listed

JUMPER CABLES

17.0451	3" molex jumper cable 22AWG
17.0453	3' molex jumper cable 20AWG
17.0454	10' molex jumper cable 20AWG
17.0455	30' molex jumper cable 20AWG