



SaVi™

architectural LED lighting

SaVi™ Strip is designed for indirect or direct lighting, both for indoor and outdoor applications. The illumination is made available by Light Emitting Diodes (LEDs) that have 50,000 to 100,000 hours of lamp life (color dependent.)

CAPABILITIES

- 50,000 to 100,000 hours of lamp life
- Designed for indirect or direct lighting, both for indoor and outdoor applications. Low voltage, flexible, and monochromatic, LED strip is designed specifically for illuminating under steps, cabinets, coves, and reveals.

SPECIFICATIONS

Construction: Clear Polycarbonate Tube
8' (2.44m) Max Length x .71" (28mm) Max Wide

View Angle: 120°

Printed Circuit Board: Length 12" (304mm)
No. LED's Per Foot: 18
Spacing .687" (17.4mm)

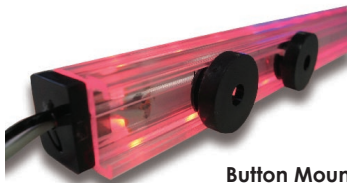
Power Consumption: 1.7w Per Foot

Track: Aluminium Anodized - Silver Color

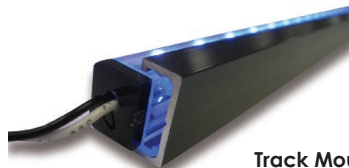
Button Mount: .5" x .5" (12.7mm x 12.7mm) Included

Standard Voltage: 24VDC for White/Red/Blue

Warranty: 2 year



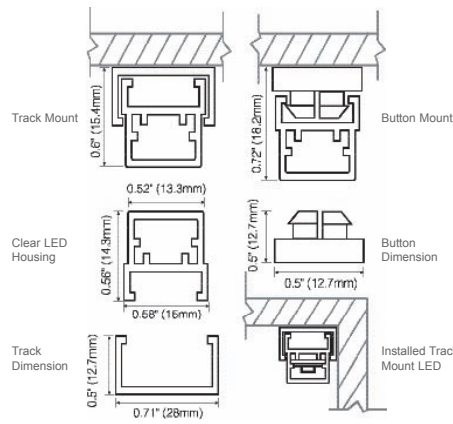
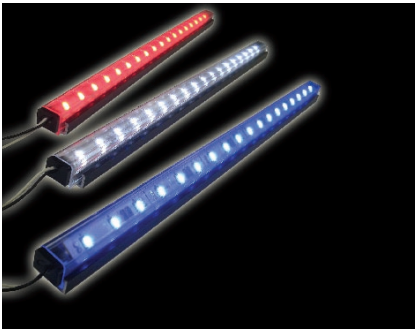
Button Mount



Track Mount



TECHNICAL SPECIFICATIONS | SaVi™ Flood Strip



Project: _____

Type: _____

Voltage: _____

Notes: _____



DESCRIPTION

The SaVi™ Flood Strip light with one line of high brightness LEDs is designed for indirect or direct lighting, both for indoor and outdoor applications. Low voltage, flexible, and monochromatic, LED strip is designed specifically for illuminating under steps, cabinets, coves, reveals, and strip applications and has an excellent tolerance for vibrations and shocks, quite different from neon and other forms of fluorescent lighting. Extremely low energy consumption and works with low voltage, thus minimizing the effects of corrosion and electrolysis.

Outfitted with LED's powered at 24VDC with a life expectancy of up to 100,000 hours.

Ideal for direct lighting of steps, walk-ways, furniture, coves, kitchens, casinos, theme-parks, restaurants, bars, hotels, signage and much more.

SPECIFICATION FEATURES

<p>Construction: Clear Polycarbonate Tube .72" (18.2mm) Max Height x .71" (28mm) Max Wide</p> <p>View Angle: 120°</p> <p>Printed Circuit Board: Length 12" (304mm) No. LED's Per Foot: 18 Spacing .687" (17.4mm)</p>	<p>Power Consumption: 1.7w Per Foot</p> <p>Track: Aluminium Anodized - Silver Color</p> <p>Button Mount: .5" x .5" (12.7mm x 12.7mm) Included</p> <p>End Cap: One for end of bar For Wet Locations - silicone will be applied on both ends</p>	<p>Standard Voltage: 24VDC for White/Red/Blue</p> <p>Maximum Run Distance For Power Supply: 02.024v 60w=35' (10.6mm) EVPS 150-24 150w=88' (26.8mm) EVPS320-24 300w=176' (56mm)</p>
---	--	--

ORDERING INFORMATION

MODEL
FL-1000-B
10.0022 - White LED Flood Strip
10.0024 - Red LED FLOOD STRIP
10.0023 - Blue LED FLOOD STRIP

MOUNTING
18.6622- STD Button Mount (2 per Ft. Included)
18.6621 - 8' Aluminium Track Section

LENGTH
Specify in inches up to 8' or 2.44 meters per section

