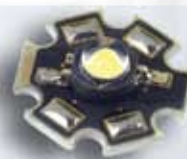




LED Driver Selector Guide

Covering low voltage, high voltage, AC and DC solutions for driving LED lighting applications from ON Semiconductor.

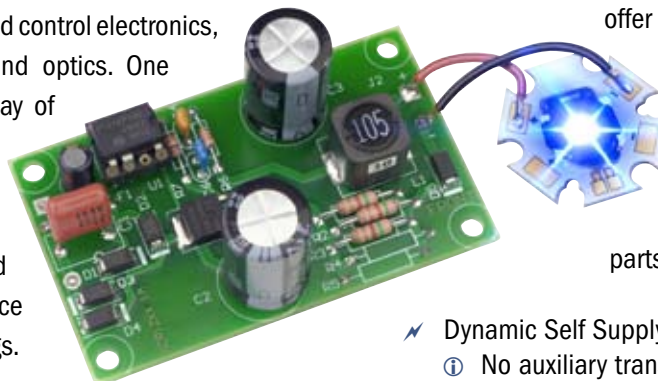


Introduction

Over the last several years there has been significant progress in the evolution of LEDs. They have been transformed from devices that had been used for indication to products driving the next generation of illumination. The benefits of LEDs are numerous:

- Broad color spectrum
- Compact in size
- Energy efficient
- Mercury free
- Long operating life
- Fully dimmable
- No IR or UV in beam
- Low voltage

High-brightness LEDs are critical to creating a solid-state lighting evolution that offers dramatic implications to lighting design, global energy conservation, and innovative products. A holistic approach is required for this evolution where LEDs are integrated with power conversion and control electronics, thermal management solutions and optics. One example that can be seen ever day of the beginnings of this successful transition is LED-based traffic signals which have become ubiquitous due to enhanced reliability, reductions in maintenance costs and significant energy savings.



Reference design using the NCP1216 in a non-isolated constant current buck configuration

Driving LEDs

LEDs are inherently low voltage devices and depending on the color and current, the forward voltage of the LED can vary from less than 2 to 4.5 V. In addition LEDs need to be driven with a constant current to ensure the intensity and color desired. This requires power conversion and control solutions to interface to the various power sources, be it the AC line, a solar panel, a 12 V car battery, a DC power supply or low voltage AC system or even primary Alkaline and Ni-based cells or rechargeable Li-Ion battery cells.

ON Semiconductor has been focused on applying our low voltage and high voltage technologies and applying our expertise in power

management solutions to the challenges of solid state lighting; be it in a portable display product, interior automotive lighting, or a ballast for LED signage. In the following pages, examples will be provided for a number of different applications of solid state lighting for architectural, industrial, automotive and portable applications.

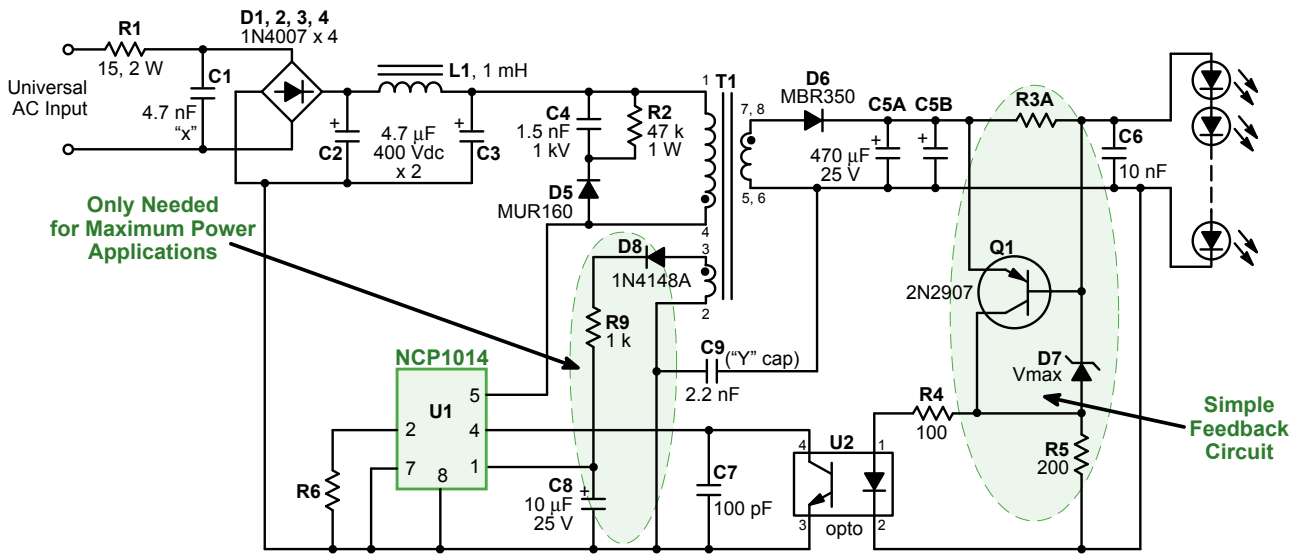
Offline Switch Mode Power Supply Solutions

...Minimize complexity, reduce board space and improve efficiency

ON Semiconductor has a long history in transforming power from the AC main into usable energy in a wide variety of different applications and power ranges from a few watts to hundreds of watts. We have developed Very High Voltage Integrated Circuit technologies (VHVIC) that combine high voltage switching transistors with medium voltage analog circuits that allow us to

offer integrated cost-effective solutions for a broad range of power needs. We offer a wide variety of fixed frequency controllers as well as converters which integrate the high voltage FET into a simplified economical lower parts count solution.

- ✓ Dynamic Self Supply (DSS) capability
 - ① No auxiliary transformer winding
- ✓ Current-mode control with adjustable skip-cycle capability
 - ① Provides excellent efficiency at light loads
 - ① No acoustic noise generation
- ✓ Fixed frequencies up to 200 kHz
 - ① Offers suitable solution for all applications
- ✓ High-voltage start-up-current source
 - ① Clean loss less start-up sequence
- ✓ Frequency jittering
 - ① Reduces EMI signature
- ✓ Internal short-circuit protection independent of auxiliary voltage
 - ① Reliable short-circuit protection, immediately reducing the output power



NCP1014 Configured as a Constant Current Isolated Offline LED Driver

Power Switching Regulators

Device	Max Output Power ¹ (W)	Mode	Peak Current Limit (mA)	Typ ² Rps(ON) (Ω)	Min HV Startup	Frequency Options (kHz)	Soft-Start	Package(s)
NCP1050	10	Gated Osc	100	22	20	44, 100, 136		PDIP-7, SOT-223
NCP1051	10	Gated Osc	200	22	20	44, 100, 136		PDIP-7, SOT-223
NCP1052	10	Gated Osc	300	22	20	44, 100, 136		PDIP-7, SOT-223
NCP1053	20	Gated Osc	400	10	20	44, 100, 136		PDIP-7, SOT-223
NCP1054	20	Gated Osc	530	10	20	44, 100, 136		PDIP-7, SOT-223
NCP1055	20	Gated Osc	680	10	20	44, 100, 136		PDIP-7, SOT-223
NCP1010	4	Current	100	22	30	65, 100, 130	✓	PDIP-7, SOT-223 ³
NCP1011	11	Current	250	22	30	65, 100, 130	✓	PDIP-7, SOT-223, Gullwing ⁴
NCP1012	11	Current	250	11	30	65, 100, 130	✓	PDIP-7, SOT-223 ³
NCP1013	15	Current	350	11	30	65, 100, 130	✓	PDIP-7, SOT-223 ³
NCP1014	19/17 ¹	Current	450	11	30	65, 100	✓	PDIP-7, SOT-223, Gullwing ⁴
NCP1027	25	Current	800	8	30	65, 100	✓	PDIP-7

BOLD denotes new device. 1. Maximum power output with DSS. 2. Typical at 25°C. 3. Gullwing package available on demand. 4. Gullwing SMD DIP-7.

Fixed Frequency Controllers

Device	Max Output Power (W)	Output Gate Drive (mA) @ V _{CC} = 11 V	Frequency Options (kHz)	500V Off-Line Startup FET	Dynamic Self Supply	Freq Jittering	Over Voltage Protection	Soft-Start	Ramp Compensation	Brown-Out	Package(s)
NCP1200	150/40 ¹	250	40, 60, 100	✓	✓				EXT		SO-8, PDIP-8
NCP1201	150	250	60, 100	✓		✓			EXT	✓	SO-8, PDIP-8
NCP1203	150	250	40, 60, 100	✓		✓			EXT		SO-8, PDIP-8
NCP1216/A ²	150/100 ¹	500	65, 100, 133	✓	✓	✓		✓ ³	INT		SO-8, PDIP-7
NCP1217/A ²	150	500	65, 100, 133	✓		✓	✓	✓ ³	INT		SO-7, PDIP-7
NCP1212	150	500	Adj Up to 150			✓		✓	EXT		SO-8, PDIP-8
NCP1230	150	500	65, 100, 133	✓		✓	✓		INT		SO-7, PDIP-7

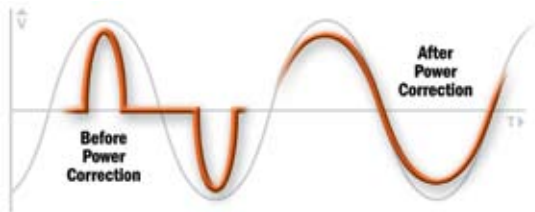
1. Maximum power output with DSS. 2. "A" Versions have a 50% Max Duty Cycle for forward topologies. 3. Soft-Start on "A" versions only.

For lower power applications less than 25W (230 Vac), an integrated power switching regulator is most often used as it minimizes total parts count in a design. Above that power range, controllers can be used which offers the designer flexibility in selecting the high voltage FET that is most suitable for the application. The controllers can be used in isolated or non-isolated applications and ON Semiconductor offers a variety of different value added features to allow the designer to optimize their design to their specific system requirements.

Power Factor Correction

...Minimize THD and Maximize PF and Efficiency

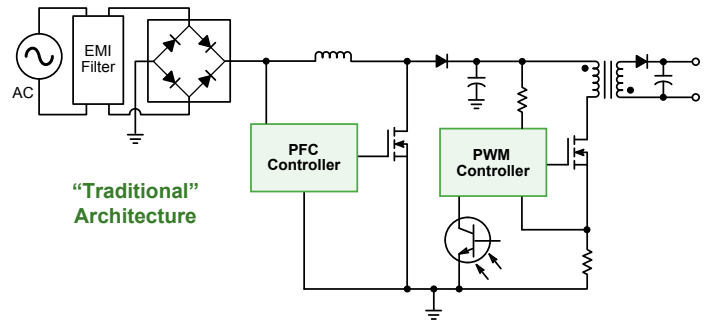
IEC 1000-3-2 standards set regulations to limit the harmonics injected into the AC line. Specifically for lighting applications, these apply if the input power is greater than 25 W (Class C). In addition in some jurisdictions even if formal IEC compliance is not required, a minimum power factor may be required. A front-end Power Factor Controller is then required in these applications. Adding such a stage can lead to difficulties in meeting other system requirements like efficiency and space unless judicious design choices are made.



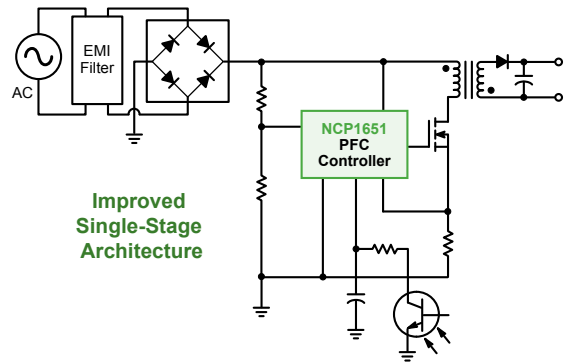
Fortunately, these challenges are understood by ON Semiconductor, which has a portfolio of innovative PFC controllers matching the designers' wishes of simple, compact and robust solutions. ON Semiconductor offers support for traditional 2 stage applications and has introduced several unique solutions to further simplify the solution such as the NCP1651 single stage flyback controller.

Applications

- Ballasts
- Streetlights
- Traffic Signals
- Luminaries



"Traditional" Architecture



Improved Single-Stage Architecture

Power Factor Controllers

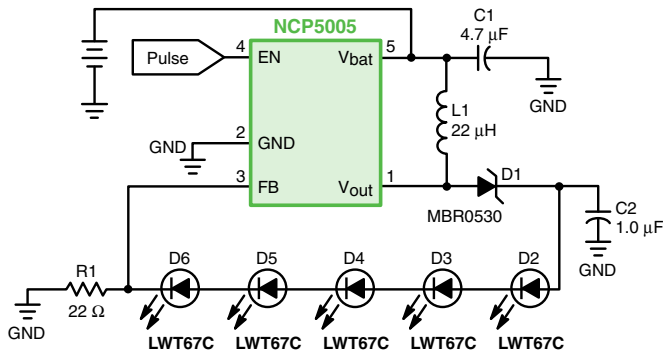
Device	Max Output Power (W)	Topology	Mode	Operation Mode	HV Start-Up	Over Voltage Protection	Under Voltage Protection	Current Limit	In-Rush Detect	Shutdown	Package(s)
NCP1651	250	Single-Stage Flyback	Continuous Conduction Mode/ Discontinuous Conduction Mode	Average Current	✓			✓		✓	S0-16
NCP1601	400	Boost	Discontinuous Conduction Mode	Fixed Frequency Voltage		✓	✓	✓	✓	✓	S0-8
NCP1603	250	Combo Flyback ¹	Discontinuous Conduction Mode	Current	✓	✓	✓	✓	✓	✓	S0-16
MC33260	300	Boost	Critical Conduction	Voltage		✓	✓	✓	✓		PDIP-8, S0-8
MC33262	200	Boost	Critical Conduction	Current		✓		✓			PDIP-8, S0-8

1. NCP1603 is a combination of NCP1601 and NCP1230.

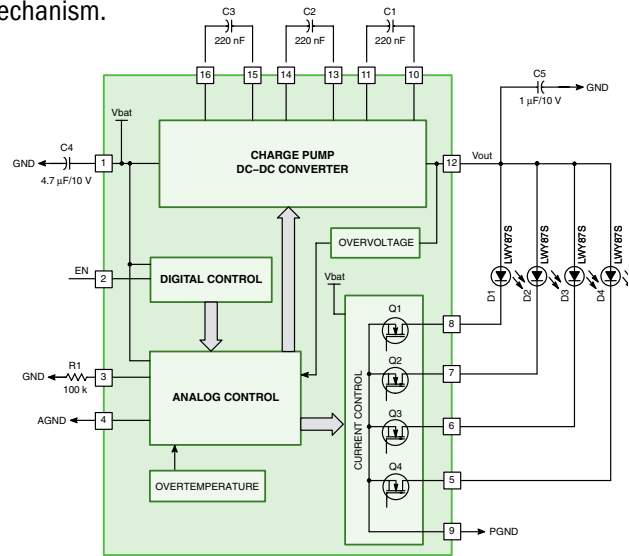
Portable Applications

High-brightness LEDs have made inroads into two major portable applications: backlighting of small color LCD panels and keyboards and replacement of incandescent bulbs for torch (flashlight) applications. These applications require optimized solutions which can maximize battery lifetime as well as minimize the PCB area and height. ON Semiconductor has a variety of solutions using both inductive and charge pump topologies. The inductive

solution offers the best overall efficiency while the charge pump solution takes up a minimize amount of space and height due to the use of low profile ceramic capacitors as the energy transfer mechanism.



Inductive Solution – NCP5005



Charge Pump Solution – NCP5604A

Low Voltage LED Drivers

Application	LED Type	Number of LEDs/ Connection	Topology	Product	Key feature
Display Backlighting	Standard, 10-25 mA	2 LEDs/Parallel	Linear	NUD4301 : Adjustable (1-30 mA) constant current driver; DFN-8 (2 x 2 mm)	Linear or PWM dimming; production in July-2006
		2 - 5 LEDs/Series	Inductive	NCP5006/5007 : Up to 92% efficiency PFM boost, 21 V/ 1 W output; thin SOT23-5 (3 x 3 mm)	Simple, open LED output clamp
		2 - 5 LEDs/Series	Inductive	NCP5005 : Enhanced version of NCP5006 - high EMI immunity	Enhanced EMI immunity, best for RF sensitive application
		2 - 5 LEDs/Series	Inductive	NCP5010 : 1 MHz PWM boost, max 2.3V output; uBump (1.7 x 1.7 mm)	Compact driver with integrated rectifier
		2 - 6 LEDs/Series	Inductive	NCP1406 : up to 90% efficiency, PFM boost, 25 V/ 0.5 W output; thin SOT23-5 (3 x 3 mm)	Can operate from 2 alkaline or Ni-based cells
		3 or 4 LEDs/Parallel	Charge Pump	NCP5604A/B : 3 or 4 outputs (25 mA each), 0.5% current matching; TQFN16 (3 x 3 x 0.8 mm)	Compact, high efficiency
Flash (Torch)	Low current - up to 50 mA for 1 cell/100 mA for 2 cell	Single LED	Inductive	NCP1400A50 : Fixed frequency PWM micropower boost converter in SOT23-5	Can operate from 1 or 2 alkaline or Ni-based cells
	Medium current/Multi-die WLED, 100-350 mA	Single (or multiple in parallel)	Charge Pump	NCP5603 : 250 mA cont/350 mA pulsed, single voltage regulated output, 75% eff; QFN10 (3 x 3 mm)	Low cost, small solution
	Medium current up to 50 mA for 2 cell and 100 mA for 3 cell	2 - 4 LEDs/Series	Inductive	NCP1406 : up to 90% efficiency, PFM Boost, 25 V/ 0.5 W output; thin SOT23-5 (3 x 3 mm)	Can operate from 2 alkaline or Ni-based cells
	High current WLED, up to 600 mA	Single (or multiple in parallel)	Inductive	NCP1421 : PFM boost (up to 1.2 MHz), output up to 5 V, 600 mA cont, 94% eff, standby current 50 nA; Micro8 (3 x 5 mm)	Synchronous rectification
	High current WLED, up to 800 mA	Single (or multiple in parallel)	Inductive	NCP1422 : PFM boost (up to 1.2 MHz), output up to 5 V, 800 mA cont, 94% eff., standby current 50 nA; DFN10 (3 x 3 mm)	Synchronous rectification
Single Driver for Backlight & Flash	LED (10 - 25 mA), Flash LED (100 - 400 mA)	4 LEDs + Flash LED	Charge Pump	NCP5608 : Consistent 90% efficiency, 8 outputs (4 @ 25 mA each + 4 @ 100 mA each), 0.5% current matching; TQFN-24 (4 x 4 mm)	One chip lighting solution

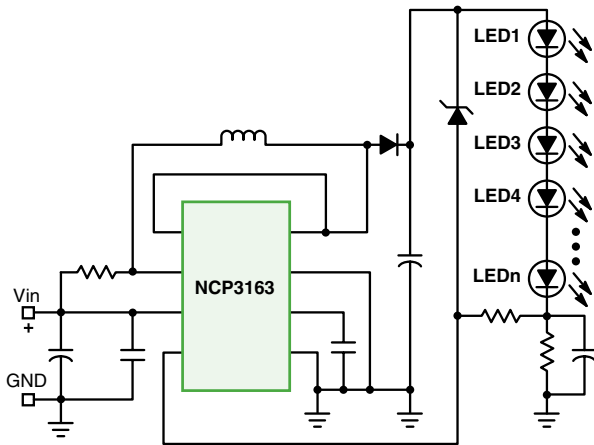
BOLD denotes new device.

Mid-Voltage Applications

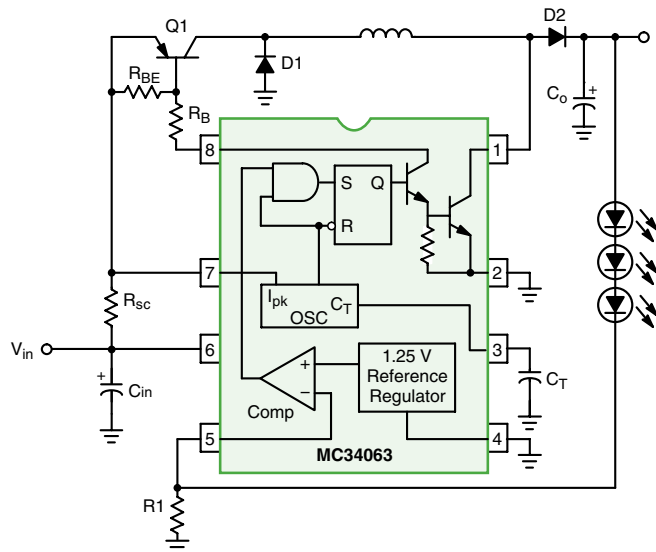
Beyond portable powered applications, there is a diverse set of high-brightness LED applications that operate from power supplies in the range of 8-40 VDC and include the following power sources – Lead-Acid batteries, 12-36 VDC adapters, solar cells, as well as low voltage 12 and 24 VAC alternating current systems. There are numerous lighting applications that fall in this category:

- Track lighting
- Landscape and path lighting
- Automotive and transportation
- Solar powered lights
- Display case lighting

Even though the objective is to drive the LEDs with constant current, the first thing that has to be understood is the input and output voltage variation of the application. The forward voltage of the LEDs is determined by the material properties, junction temperature range, drive current, and manufacturing tolerance. With this information, the right linear or switching power supply topology can be selected.



Boost (Step-Up) Topology



Buck/Boost (shown) or SEPIC Topology

CHOOSING YOUR TOPOLOGY

What V_{in}/V_{out} condition do you have?

Yes

Is $V_{out(min)} > V_{in(max)}$?

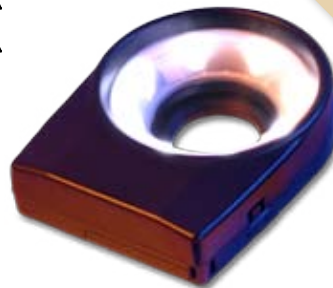
No



Yes

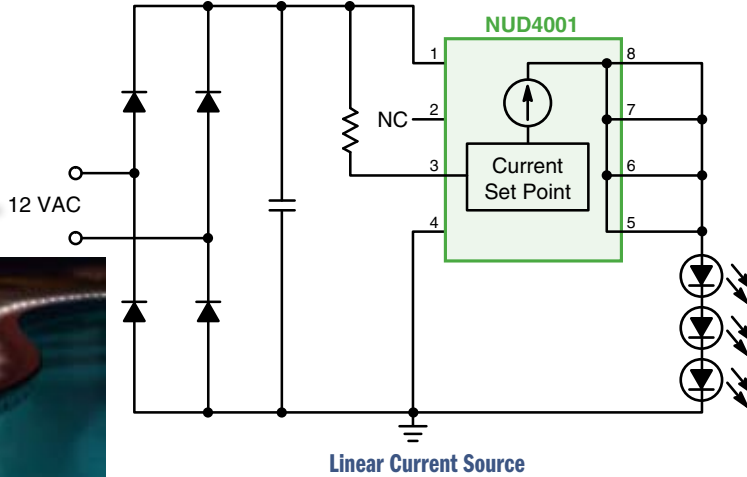
Does V_{out} Overlap V_{in} ?

No



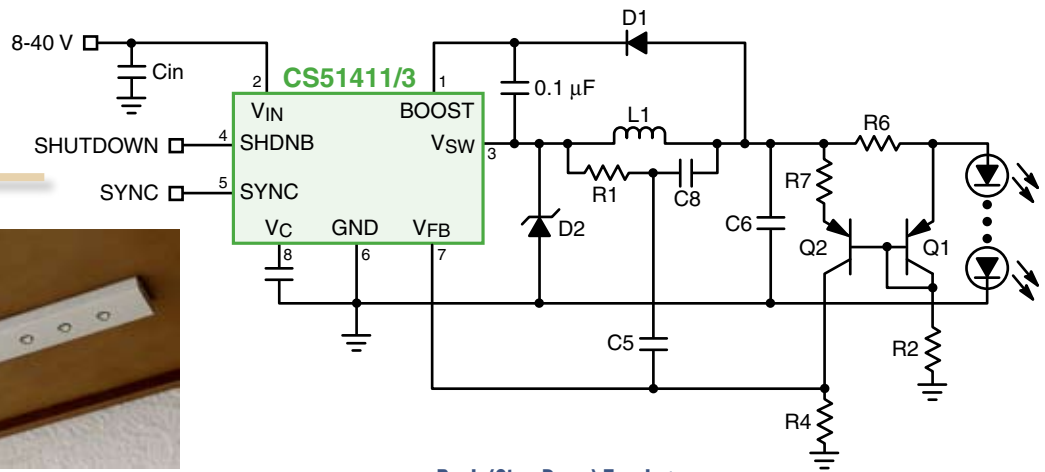
Is $V_{in(min)} > V_{out(max)}$?

For Low Power



Linear Current Source

For High Power



Buck (Step-Down) Topology

DC-DC Converters

Device	Description	Topologies	V_{in} Range (V)	Switch Current ¹ (A)	Package(s)	Comments
NUD4011	High Voltage, Low Current LED Driver	Linear	12 - 200	0.07	S0-8	
NUD4021	Hysteretic Buck LED Driver (Automotive Grade)	Buck (Step-down)	8.0 - 40	0.4	S0-8	Future product, 3Q06
NUD4001	Up-to-500 mA Constant Current LED Driver (Automotive Grade)	Linear	5.0 - 30	0.5	S0-8	Peak Voltage (<1 msec) of 60 V
MC34063	Up-to-100 kHz Burst-Mode Voltage-Mode Converter	Buck, Boost, Buck/Boost	3.0 - 40	1.5	S0-8	Available in automotive grade versions
CS51411/3	260/520 kHz Buck Regulator with Synchronization Capability	Buck (Step-down)	4.5 - 40	1.5	S0-8, DFN	For automotive grade, see NCV51411
CS51412/4	260/520 kHz Buck Regulator with External Bias Capability	Buck (Step-down)	4.5 - 40	1.5	S0-8, DFN	
CS5171/3	280/560kHz Boost Regulator	Step-up or SEPIC	2.7 - 30	1.5	S0-8	
NCP3063	Up-to-200 kHz Burst-Mode Voltage-Mode Converter	Buck, Boost, Buck/Boost	3.0 - 40	1.5	S0-8, DFN	July 06 production
LM2576	52 kHz PWM Step-Down Switching Regulator	Buck (Step-down)	7.0 - 40	3.0	T0-220, D2PAK	
NCP3163	Up-to-200 kHz Burst-Mode Voltage-Mode Converter	Buck, Boost, Buck/Boost	2.5 - 40	3.4	S0-16WB, DFN	Thermally enhanced package
MC33163	Up-to-50 kHz Burst-Mode Voltage-Mode Converter	Buck, Boost, Buck/Boost	2.5 - 40	3.4	S0-16WB	Available in automotive grade versions

BOLD denotes new device. 1. For switching regulators, this current is used to calculate LED current based on V_{in} and V_{out} conditions.

Sales and Design Assistance from ON Semiconductor

For additional design information, please see the following ON Semiconductor Application Notes

AND8091/D	TriColor LED Driver Minimizes Control Lines
AND8109/D	LED Constant Current Source Driver Scheme
AND8135/D	Efficient High Power Flash Light
AND8137/D	High Current LED - Isolated Low Voltage AC Drive
AND8138/D	DC-DC SEPIC Converter for Driving High Brightness LEDs
AND8146/D	High Current LED - Capacitive Drop Drive Application Note
AND8156/D	NUD4001 & NUD4011 Low Cost Integrated Current Sources
AND8171/D	NCP1421/2 Reference Designs for High-Power White LEDs
AND8172/D	Understanding the Noise out of Inductor Based White LED Drivers
AND8192/D	Charge Pump Based Multiple LED Driver
AND8197/D	NUD4001 LED Driver Demo Board
AND8198/D	Using the NUD4001 to Drive High Current LEDs
AND8224/D	NCP101x Universal Offline LED Flasher Circuit
AND8234/D	NUD4001 Dimming Ability Demo Board
HBD853/D	Power Factor Correction Handbook
NCP5010DEMO/D	NCP5010 White LED Driver Demo Board
SMPSRM/D	SMPS Reference Manual

www.onsemi.com

ON Semiconductor Distribution Partners

All American	www.allamerican.com	(800) 573-2727
Arrow Electronics	www.arrow.com	(800) 777-2776
Avnet	www.em.avnet.com	(800) 332-8638
Chip Supply	www.chipsupply.com	(407) 298-7100
Digi-Key	www.digikey.com	(800) 338-1003
EBV Elektronik	www.ebv.com/en/locations.html	(49) 8121 774-0
Farnell InOne	www.farnellinone.com	+44 8701 200 200
Future Electronics Europe	www.futureelectronics.com/contact	info-eur-future@futureelectronics.com
Future & FAI Electronics	www.futureelectronics.com/contact	1-800-FUTURE1 (388-8731)
Minco	www.mincotech.com	(512) 834-2022
Newark Electronics	www.newark.com	(800) 4-NEWARK
Rochester Electronics	www.rocelec.com	(978) 462-9332
Semi Dice Inc	www.semidice.com	1 (800) 345-6633
Silica (An Avnet Company)	www.silica.com	+33 1 6447 2929
Spoerle	www.spoerle.de/de/about/offices	+49 6103 3040

NORTH AMERICA SALES OFFICES & REP FIRMS

Alabama	Huntsville	e-Components	(256) 533-2444
	Huntsville	ON Sales Office	(256) 774-1004
Arizona	Phoenix	Compass Southwest	(480) 763-0968
California	Santa Clara	T3 Technical Sales	(408) 350-3900
	Irvine	Compass Southwest	(949) 580-0270
	San Diego	Compass Southwest	(858) 635-5959
CANADA	All Regions	Astec	(905) 607-1444
Colorado	Englewood	ON Sales Office	Kari Hill: (720) 895-1367 Mike Barone: (303) 670-8000
Connecticut	Monroe	Impact Technical Sales	(203) 268-7229
Florida	Boca Raton	e-Components	(561) 289-1379
	Lake Mary	e-Components	(407) 804-0042
	Plantation	ON Sales Office	(954) 325-1223
	Palm Harbor	e-Components	(727) 937-3016
Melbourne	e-Components	(321) 676-5659	
	Georgia	Duluth	e-Components
Illinois	Hoffman Estates	Stan Clothier	(847) 781-4010
Indiana	Fishers	Bear VAI	(317) 570-0707
	Kokomo	ON Sales Office	(765) 865-2091
Iowa	Cedar Rapids	Stan Clothier	(319) 393-1576
Kansas	Overland Park	Stan Clothier	(913) 894-1675
Maryland	Columbia	Third Wave Solutions	(410) 290-5990
Massachusetts	Burlington	Impact Technical Sales	(781) 238-8888
	Lowell	ON Sales Office	(978) 452-6075
Michigan	Livonia	ON Sales Office	(734) 953-6848
Minnesota	Eden Prairie	Stan Clothier	(952) 944-3456
Missouri	St. Charles	Stan Clothier	(636) 916-3777
New Jersey	Denville	CJR Associates	(973) 625-2796
New York	Long Island	CJR Associates	(973) 625-2796
	New York City	CJR Associates	(973) 625-2796
	Rochester	TriTech	(716) 385-6500
	Binghamton	TriTech	(607) 722-3580
Ohio	Brecksville	Bear VAI	(937) 748-1341
Oregon	Portland	SiFore Technical Sales	(503) 977-6267
Pennsylvania	Hatboro	Delta Technical Sales	(215) 957-0600
Texas	Austin	West Associates	(512) 343-1199
	Richardson	West Associates	(972) 680-2800
Washington	Bellevue	SiFore Technical Sales	(425) 990-4701
Wisconsin	Statewide	Stan Clothier	(847) 781-4010

INTERNATIONAL

BRAZIL	San Paulo	(55-11) 3842-8911
CHINA	Beijing	86-10-8518-2323
	Chengdu	86-28-8678-4078
	Shenzhen	86-755-8209-1128
	Shanghai	86-21-5131-7168
FRANCE	Paris	33 (0) 1 39-26-41-00
GERMANY	Munich	49 (0) 89-93-0808-0

INTERNATIONAL

HONG KONG	Hong Kong	852-2689-0088
INDIA	Bangalore	91-80-2532-5084
ISRAEL	Herzeliya	972 (0) 9-9609-111
ITALY	Milan	39 02-530-0951
JAPAN	Tokyo	81-3-5773-3850
KOREA	Seoul	82-2-2190-3500
MALAYSIA	Penang	60-4-226-9368

INTERNATIONAL

MEXICO	Guadalajara	(5233) 3123-9199
SINGAPORE	Singapore	65-6391-1260
SLOVAKIA	Piestany	(421) 33 790 2320
TAIWAN	Taipei	886-2-2377-9911
UNITED KINGDOM	Slough	44 (0) 1296-610400

ON Semiconductor and the ON logo are registered trademarks of Semiconductor Components Industries, LLC (SCILLC). SCILLC reserves the right to make changes without further notice to any products herein. SCILLC makes no warranty, representation or guarantee regarding the suitability of its products for any particular purpose, nor does SCILLC assume any liability arising out of the application or use of any product or circuit, and specifically disclaims any and all liability, including without limitation special, consequential or incidental damages. "Typical" parameters which may be provided in SCILLC data sheets and/or specifications can and do vary in different applications and actual performance may vary over time. All operating parameters, including "Typicals" must be validated for each customer application by customer's technical experts. SCILLC does not convey any license under its patent rights nor the rights of others. SCILLC products are not designed, intended, or authorized for use as components in systems intended for surgical implant into the body, or other applications intended to support or sustain life, or for any other application in which the failure of the SCILLC product could create a situation where personal injury or death may occur. Should Buyer purchase or use SCILLC products for any such unintended or unauthorized application, Buyer shall indemnify and hold SCILLC and its officers, employees, subsidiaries, affiliates, and distributors harmless against all claims, costs, damages, and expenses, and reasonable attorney fees arising out of, directly or indirectly, any claim of personal injury or death associated with such unintended or unauthorized use, even if such claim alleges that SCILLC was negligent regarding the design or manufacture of the part. SCILLC is an Equal Opportunity/Affirmative Action Employer. This literature is subject to all applicable copyright laws and is not for resale in any manner.

PUBLICATION ORDERING INFORMATION

LITERATURE FULFILLMENT:

Literature Distribution Center for ON Semiconductor
P.O. Box 5163, Denver, Colorado 80217 USA
Phone: 303-675-2175 or 800-344-3860 Toll Free USA/Canada
Fax: 303-675-2176 or 800-344-3867 Toll Free USA/Canada
Email: orderlit@onsemi.com

N. American Technical Support: 800-282-9855 Toll Free
USA/Canada.

Europe, Middle East and Africa Technical Support:
Phone: 421 33 790 2910

Japan Customer Focus Center
Phone: 81-3-5773-3850

ON Semiconductor Website: www.onsemi.com

Order Literature: <http://www.onsemi.com/orderlit>

For additional information, please contact your local
Sales Representative