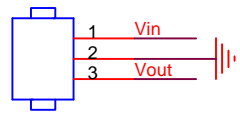
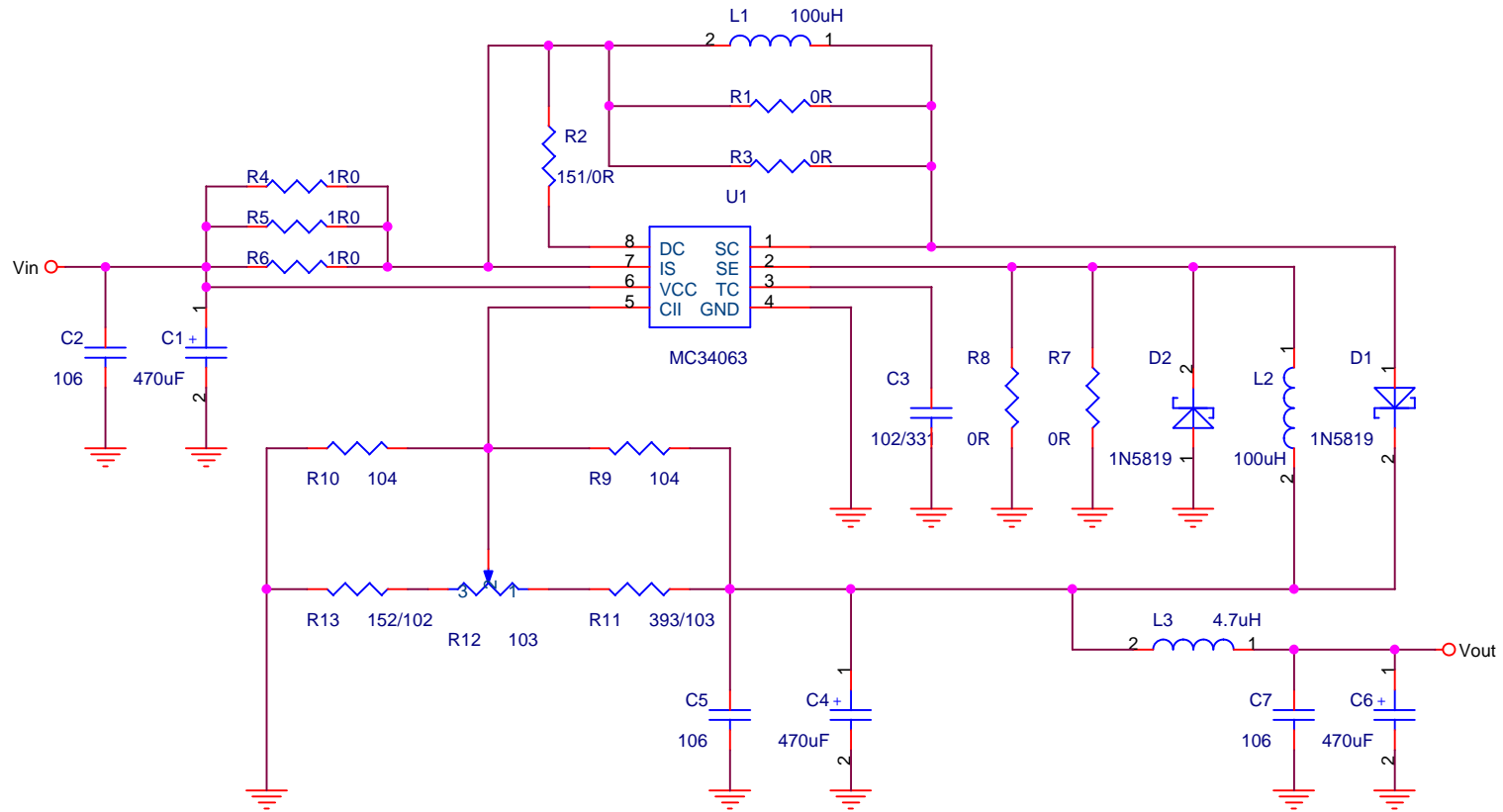
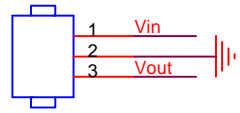


J1 HEADER 3



J2 HEADER 3



### Step-Up Mode,

You should not solder R1, R3, L2 and D2. The value of R2 should be 150ohm, R11 should be 39kohm, R13 should be 1.5kohm and C3 should 1nF. Tune R12 to adjust output voltage.  
 Input: DC 4V ~ 20V  
 Output: DC 5V ~ 20V  
 Current: 200mA max

### Step-Down Mode,

You should not solder R7, R8, L1 and D1. The value of R2 should be 0ohm, R11 should be 10kohm, R13 should be 1kohm and C3 should be 330pF. Tune R12 to adjust output voltage.  
 Input: DC 4V ~ 20V  
 Output: DC 2.5V ~ 20V  
 Current: 500mA max

This document can be download from SURE Electronics website, please visit [www.sure-electronics.net](http://www.sure-electronics.net) for more infomation and help. You can find many other fantastic electric compnents there. Thanks a lot for interest in our products!

Title		
Switch Mode Stepup/Stepdown DC_DC Controller		
Size	Document Number	Rev
A	Designed by Jane.Luo, Sep 22th, 2005	1.0
Date:	Wednesday, October 19, 2005	Sheet 1 of 1