

User's Manual

For

DB810

Digital DC Servo Driver

Version 1.0

©2000 All Rights Reserved

Attention: Please read this manual carefully before using driver!



The content in this manual has been carefully prepared and is believed to be accurate, but no responsibility is assumed for inaccuracies.

Leadshine reserves the right to make changes without further notice to any products herein to improve reliability, function or design. Leadshine does not assume any liability arising out of the application or use of any product or circuit described herein; neither does it convey any license under its patent rights of others.

Leadshine's general policy does not recommend the use of its products in life support or aircraft applications wherein a failure or malfunction of the product may directly threaten life or injury. According to Leadshine's terms and conditions of sales, the user of Leadshine's products in life support or aircraft applications assumes all risks of such use and indemnifies Leadshine against all damages.



Leadshine Technology Co., Ltd.

Floor 6, Block B, Yuehai Building, Nanhai Avenue, Shenzhen, China

T: (86)755-26471129, F: (86)755-26402718

URL: www.leadshine.com E-Mail: sales@leadshine.com

©2000 by Leadshine Technology Company Limited.
All Rights Reserved

Table of Contents

1. Introduction, Features and Applications	2
2. Specifications and Operating Environment	3
3. Driver Connectors	4
4. Servo Setup	6
5. Tuning the Servo	7
6. Using Tips and Attention	10
Appendix: Limited Warranty	13

1. Introduction, Features and Applications

DB810 is a new digital DC servo driver developed with the advanced 21-century technology in the world today. In position control, it's easy for the end user to change the step driver to DB810 without change control system, because the input command is PUL/DIR signal, which is compatible with step driver command. In velocity control, the position feedback of the encoder effectively eliminate the “zero-speed drift” phenomenon when the analog servo is standstill. In the low power motion control applications, DB810 can be the same, or better than digital AC servo systems in velocity, precision, noise, stability and other aspects, while the price is the same as step driver, far lower than AC servo.

Features of this driver

- 18-80VDC, 0-20A, 20-400W
- PID feedback servo drive
- Feedback resolution X4 encoder line count
- Lock range +/- 128 count following error
- Opto-isolated step and direction inputs
- Small size
- Over-current, short-circuit protection

Applications of this driver

Suitable for a wide range of equipment and instruments such as mini type engraving machines, jet-ink machines and etc. It performs better in equipment expected with low noise, high precision and high velocity.

2. Specifications and Operating Environment

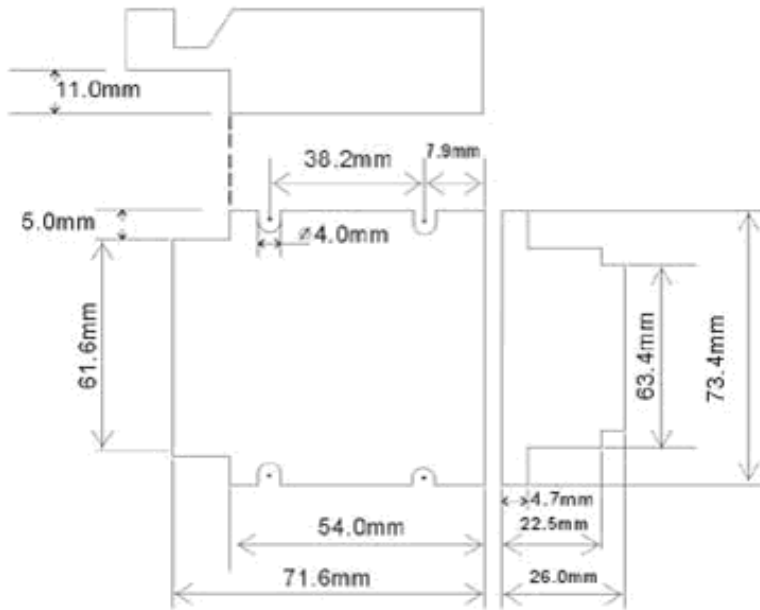
Electric Specifications ($T_j = 25^\circ\text{C}$)

Parameters	DB810			
	Min.	Typical	Max.	Unit
Peak Output Current	0	-	20	Amps
Supply voltage	+18	-	+80	VDC
Logic signal current	6	12	20	mA
Pulse input frequency	0	-	250	KHz
Isolation resistance	500			MΩ
Current provide to encoder			50	mA

Operating Environment and Parameters

Cooling	Natural cooling or forced convection	
Environment	Space	Avoid dust, oil frost and corrosive gas
	Temperature	0 ° - 50
	Humidity	40 - 95%RH
	Vibration	5.9m/s ² Max
Storage Temp.	-20 - +65	
Weight	Approx. 100 grams (3.53 oz)	

Mechanical Dimensions (unit=mm, 1 inch = 25.4 mm)

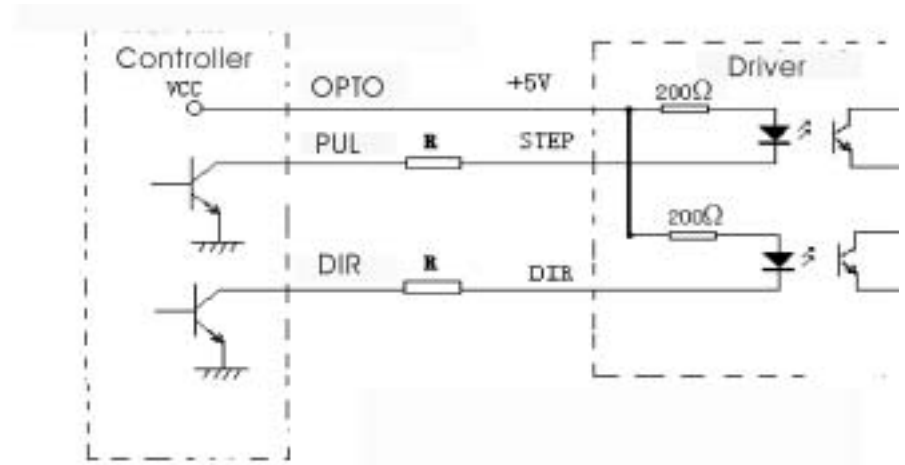


3. Driver Connectors

3.1 Definition of pins

Terminal No.	Definition	Terminal No.	Definition
1	POWER GROUND	7	E+5V
2	+18 TO 80VDC	8	PHASE A
3	MOTOR+	9	PHASE B
4	MOTOR-	10	DIR
5	ERR/RES	11	STEP
6	E GND	12	+5V

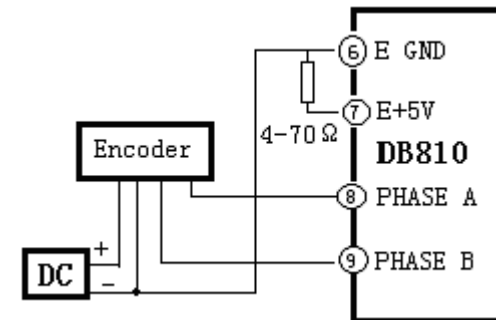
3.2 Control Signal Connector Interface



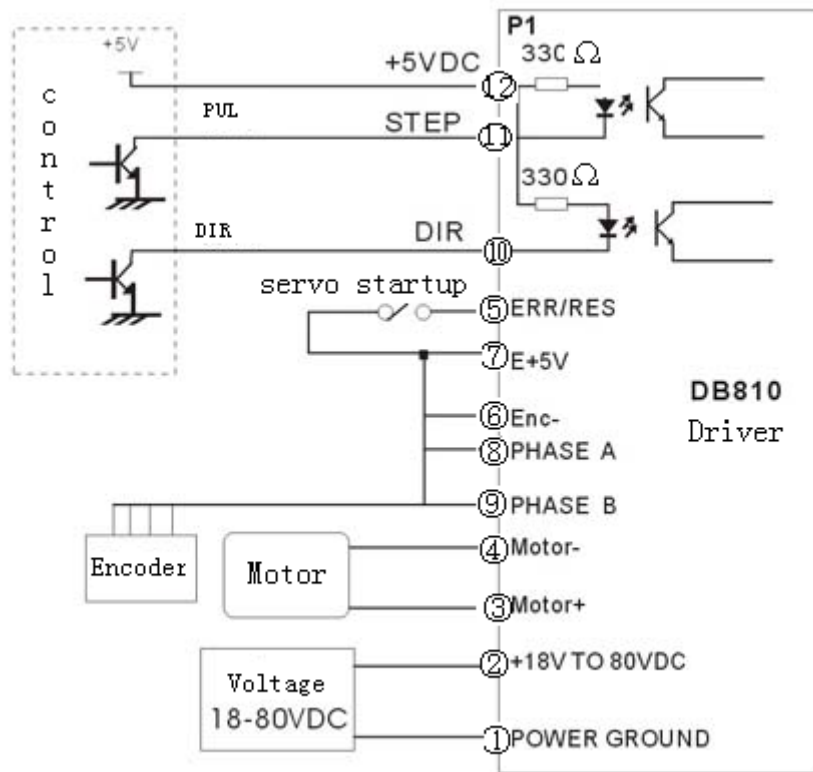
R=0 if VCC=5V, R=1K if VCC=12V,
R=2K if VCC=24V, R must be connected to controller signal terminal.

3.3 Encoder Connection

Encoder power supply: if the encoder supply current is less than 50mA, DB810 can supply voltage directly., connect E Gnd to encoder Ground, E+5V to encoder +5V, encoder phase A to Phase A, encoder phase B to Phase B. If the encoder supply current is more than 50mA, use an external +5VDC supply, and connect it as following diagram:



3.4 Typical Diagram



4. Servo Setup

4.1 Before you start, you must follow following steps:

4.1.1 Install Encoder

Firstly, you must have a suitable encoder mounted and properly aligned on the motor, assemble the encoder according to factory manual.

4.1.2 Prepare Power Supply

Secondly, you must have a DC power supply suitable for the motor. Do not use a power supply voltage more than 5 volts in excess of the motors rated voltage. The power supply

current rating must equal the maximum current you expect to run the motor at. When the power supply lead is longer than 50 cm, connect between POWER GND and +18 TO 80VDC with a 1000UF/100V electrolytic capacitor

4.1.3 Prepare Signal Source

Prepare a signal source with STEP and DIR signal.

4.1.4 Initial Setup DB810

Before going on, turn the current LIMIT trimpot a quarter to half of full scale. Turn the GAIN trimpot fully off and turn the DAMP trimpot to a quarter of full scale. The trimpots are single-turn, do not over-torque them with a screwdriver.

4.2 MOTOR CONNECTION

Make sure that the power is off and the STEP pulse source is set to zero pulse per second. Check to see if the potentiometer setting are set according to the instructions. Press the motor so it cannot jump off the bench. Motor will come back to command position quickly within shortest time with mini overcharge, or no overcharge. Please refer to “use of PULS and DAMP” for the test way.

5. Tuning The Servo

Turn on the power supply, the FAULT light should turn off after 3 seconds.

5.1 If everything is correct you should hear the motor “singing”, this is normal. The motor is dithering or bouncing between adjacent encoder counts. The integral term in a PID loop has infinite DC gain over time and will amplify even the smallest position error. Because encoder feedback can only occur on count edges, the loop is “blind” until it encounters an encoder count edge. It then reverses the motor direction until another edge is found, then the process repeats.

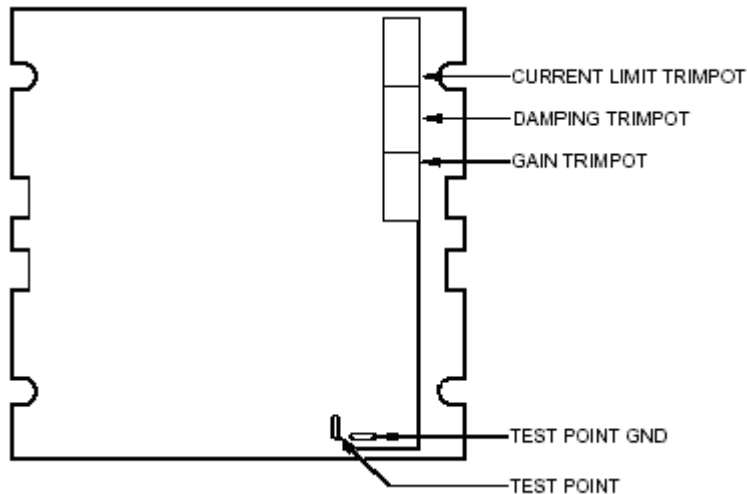
If the motor jumps slightly and the FAULT light immediately turns back on, then either the motor is wired backwards or the potentiometer misadjusted. Check the potentiometer settings, if they seem right then switch the motor leads and try again. If it still doesn’t work after you followed all of the previous steps, please contact us at tech@leadshine.com.

5.2 Now turn on your STEP pulse source and ramp the speed up to see if the motor runs. It should run clockwise with a logical “1” on the DIRECTION input.

5.3 The optimum way to tune the servo is to induce an impulse load on the motor while watching an oscilloscope to see how the motor behaves in response, then adjusting the PID co-efficients for optimal behavior. In all cases the motor must return to the command position, what matters is how it does it. The manner in which the motor returns to its command position is called damping. At one extreme called overdamped response, the motor returns to position after a long, drawn out

delay. At the other extreme called underdamped response, the motor returns to its position too rapidly, overshoots, returns and undershoots and so on until it finally settles at its command position. This is also called ringing; when extreme, the over/undershoot builds in amplitude until the motor enters violent oscillation. Between the two extremes is the optimal response called critical damping. Here the motor rapidly returns to its position with little or no overshoot in the minimal amount of time.

5.4 There are three potentiometer knob in the side of DB810, they are GAIN, DAMP and LIMIT separately for current setting.



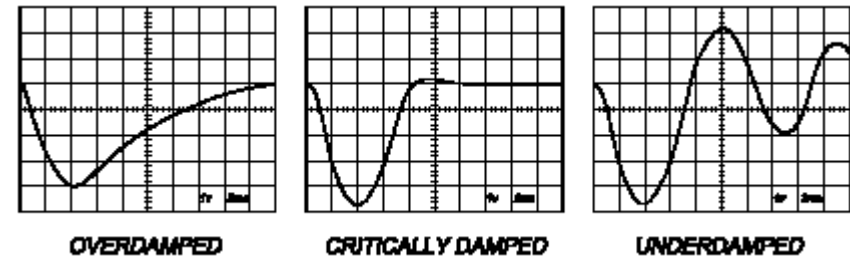
GAIN and DAMPING

- GAIN and DAMPING setting generally track each other. If you increase GAIN (greater stiffness), then increase DAMPING is needed as well to restore critical damping. Be careful, increasing GAIN without increasing DAMPING may cause the motor to break out into violent oscillation. The higher GAIN is set, the noisier the motor will be when stopped. This is because higher gain causes more vigorous dithering between encoder counts at rest.

5.5 POSITION ERROR

The error between servo actual position and pulse command position, can be improved by tuning servo parameter.

You can detect following response picture by seeing oscilloscope:



- To see how your servo is compensated it is first necessary to induce a disturbance. The easiest way is to switch the DIRECTION input while commanding a constant speed via the STEP input. The abrupt direction change puts just the momentary load needed on the motor while you watch how it response. If you are using an oscilloscope, use channel 1 on the test point and channel 2 on the DIRECTION input. Set the trigger to "normal", trigger source to channel 2 and trigger edge to "+". You should see a single sweep for every clockwise change in direction.

Slowly increase STEP speed until you get a picture similar to one of the three following, and then do the steps:

OVERDAMPED: Decrease DAMPING or increase GAIN

CRITICALLY DAMPED: Do nothing; you are here

UNDERDAMPED: Decrease GAIN or increase DAMPING

5.6 If there are OVERDAMPING when tuning the servo, the response servo pulse command is slowly, and it takes longer time to come back to command position. If there are OVERGAIN when tuning the servo, the response servo pulse command is quickly, and stop only after several times of servo vibration. If the tuning servo is normal, the response servo command is quickly, and come back to command position with stability quickly. If there are OVERDAMPING, please decrease DAMPING or increase GAIN; if there are OVERGAIN, please decrease GAIN or increase DAMPING.

To make it convenient for user to tuning, there is a test point inside of the DB810, as following: You should set the servo control as: short distance, high speed, acceleration as high as possible, motor runs back and forth, and then the servo response picture can be tested, so tuning DAMPING and GAIN until correct.

6. Using Tips and Attention

6.1 Using Tips

6.1.1 The current LIMIT trimpot sets maximum current the motor is permitted to have. It is adjustable from 0 amps to 20 amps. Normally the LIMIT trimpot is set to maximum (20 amps) unless you want to limit motor torque to a lower value.

More speed and position is unaffected by the current LIMIT setting unless the torque demand due to load exceeds this setting, then the motor position will fall behind the command position because of insufficient torque.

6.1.2 Normally when the DB810 is first powered up, it will be necessary to push the momentary switch to START for 5 seconds. This will clear the power-on reset condition and extinguish the FAULT LED. The motor will then be enabled and the drive will begin to operate.

If at any time after that a condition occurs that causes the DB810 to “fault out”, such as not being able to complete a step command, the ERR/RES terminal will go to “0”, signaling the computer an error has occurred. This will require the operator to correct the problem that caused the fault and then push the switch to “START” for 5 seconds to re-enable the DB810.

At anytime the operator can push the switch to the “STOP” position to immediately halt the DB810 drive. Anytime the DB810 is in the “FAULT” state (FAULT LED lit), all switching action stops and the motor freewheels and is unpowered. This will light the “FAULT” light.

6.1.2.1 Fault Indicator

The FAULT indicator is on while the drive is in power-on reset, the DISABLE input is held “low” or if the protection circuit is tripped due to a fault condition. All power MOSFETs are turned off and all internal counters are reset. The FAULT condition lasts for 3 seconds, and then self-resets to try again. If the protection circuit tripped it and the causes is not cleared, then it will immediately re-enter the FAULT state again and repeat the cycle.

There are two conditions that will trip the protection circuit. One condition is if a short-circuit occurs and current exceeds 20 amps.

The other condition is if the POSITION ERROR exceeds +/- 128 counts causing a break of the servo-lock. This condition can have several causes:

- 1). The loop settings are severely under-damped and the motor breaks out into oscillation.
- 2). Excessive motor load due to acceleration or workload.
- 3). The speed command in excess of what the motor can deliver.
- 4). The current LIMIT is set too low.
- 5). The power supply current is insufficient for the demand.
- 6). The motor is wired backwards, is broken or disconnected.
- 7). Encoder failure.

6.1.2.2 Reversing Default Motor Direction

The DB810 will turn the motor in the CW direction when the DIRECTION input is “high” (logical “1”, or +5VDC). If instead CCW is preferred, then:

- 1) Reverse the motor “+” and “-“ leads (pin 3 with pin 4)
- 2) Reverse the encoder “channel A” and “channel B” leads (pin 8 with pin 9)

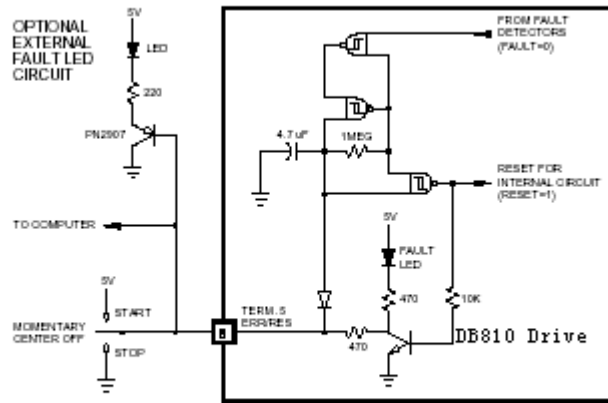
6.1.2.3 ERR/RES

This terminal functions as an ERROR output and as a RESET input. Because this terminal functions as both an input and an output, some detailed description is necessary.

When first testing the DB810, ERR/RES (term. 5) was connected to ENC+ (term. 7). It can be left that way if it is not necessary to read the state of the ERROR output. Otherwise, the following details are important.

The ERROR output is latched in the “ERROR” state (term. 5 = 0) by the power-on reset circuit in the DB810. It will stay in this state indefinitely until it is cleared by applying +5V to this terminal for at least 5 seconds.

The voltage on this terminal is +5VDC when the DB810 is functioning normally. The voltage on this terminal goes to 0VDC whenever the FAULT indicator is lit. This output can be used to signal your controller that an error has occurred.



The above circuit shows how to implement an external switch to clear an ERROR condition and RESET the DB810, while still being able to read the state of the drive. It also includes an optional FAULT LED circuit if a remote indication of the state of the DB810 is desired.

6.2 Attention

6.2.1 if the wire length longer than 50cm, you should connect a 1000UF capacitor between the source terminal, pay attention that the polarity can not be reversed.

6.2.2 if the encoder power supply current is more than 50mA, please use an external +5VDC supply, and between the two wires must be share ground, connection as: external ground with pin 6 E GND, and connect a 470Ω 1/4w resistor between pin 7 E+5V with pin 6 E GND.

APPENDIX

TWELVE MONTH LIMITED WARRANTY

Leadshine Technology Co., Ltd. warrants its products against defects in materials and workmanship for a period of 12 months from shipping date. During the warranty period, Leadshine will either, at its option, repair or replace products which prove to be defective.

EXCLUSIONS

The above warranty shall not apply to defects resulting from: improper or inadequate handling by customer; improper or inadequate customer wiring; unauthorized modification or misuse; or operation outside of the electrical and/or environmental specifications for the product.

OBTAINING WARRANTY SERVICE

To obtain warranty service, a returned material authorization number (RMA) must be obtained from customer service at e-mail: tech@leadshine.com before returning product for service. Customer shall prepay shipping charges for products returned to Leadshine for warranty service, and Leadshine shall pay for return of products to customer.

WARRANTY LIMITATIONS

Leadshine makes no other warranty, either expressed or implied, with respect to the product. Leadshine specifically disclaims the implied warranties of merchantability and fitness for a particular purpose. Some jurisdictions do not allow limitations on how long and implied warranty lasts, so the above limitation or exclusion may not apply to you. However, any implied warranty of merchantability or fitness is limited to the 12-month duration of this written warranty.

Shipping Failed Product

If your product should fail during the warranty period, e-mail customer service at tech@leadshine.com to obtain a returned material authorization number (RMA) before returning product for service. Please include a written description of the problem along with contact name and address. Send failed product to distributor in your area or: Leadshine Technology Co., Ltd. Floor 6, Block B, Yuehai Building, Nanhai Avenue, Shenzhen, China. Also enclose information regarding the circumstances prior to product failure.