

Products

- ▶ HBF Series Hybnd Stepping Motor
 - ▶ 1.8degree 20mm 2 Phase Hybrid Stepping Motor
 - ▶ 1.8degree 28mm 2 Phase Hybrid Stepping Motor
 - ▶ 0.9degree 39mm 2 Phase Hybrid Stepping Motor
 - ▶ 1.8degree 39mm 2 Phase Hybrid Stepping Motor
 - ▶ 0.9degree 42mm 2 Phase Hybrid Stepping Motor
 - ▶ 1.8degree 42mm 2 Phase Hybrid Stepping Motor
 - ▶ 3.6degree 42mm 2 Phase Hybrid Stepping Motor
 - ▶ 0.9degree 57mm 2 Phase Hybrid Stepping Motor
 - ▶ 1.2degree 57mm 3 Phase Hybrid Stepping Motor
 - ▶ 1.8degree 57mm 2 Phase Protective Hybrid Stepping Motor
 - ▶ 1.8degree 57mm 2 Phase Hybrid Stepping Motor
 - ▶ 86HBF Series Motor
 - ▶ 110HBF Series Motor
- ▶ BYG Series Hybnd Stepping Motor
 - ▶ 57BYG Series
 - ▶ 86BYG Series
 - ▶ 110BYG Series
 - ▶ 130BYG Series
- ▶ Servo Motor Series
 - ▶ 60 Servo Motor Series
 - ▶ 90 Servo Motor Series
 - ▶ 110 Servo Motor Series
 - ▶ 130 Servo Motor Series

Product

product>> BYG Series Hybnd Stepping Motor

57BYG series motor



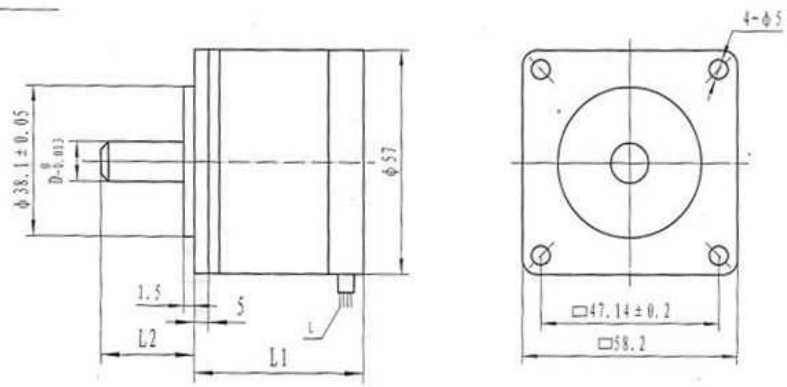
Technique parameter

Model No.	Phase	Voltage	Current	Resistance	Inductance	Maximum static torque	Detent torque	Rotor Inertia	Weight	Specification Lead	Wiring diagram
		V	A	Ω	mH	N.m	N.m	kg. cm 2	Kg		
JB57BYG007	4	12.2	0.38	32	30	29.4	3.33	60	0.45	FF46-1	a
JB57BYG008	4	4	1.3	3.1	4.4	49	5.88	118	0.60	FF46-1	a
JB57BYG009	4	5.8	2.4	2.4	1.0	58.8	7.06	145	0.65	FF46-1	a
JB57BYG027	4	3.5	1.4	2.5	3.5	51.94	5.88	118	0.60	AWG22	a
JB57BYG055	4	4	1.1	3.6	3.0	29.4	3.33	60	0.45	FF46-1	a
JB57BYG056	4	2.3	1.5	1.5	1.3	29.4	3.33	60	0.45	FF46-1	a
JB57BYG057	4	1.4	3.8	0.37	0.45	49	5.88	118	0.60	FF46-1	b
JB57BYG059	4	4	1.6	2.5	3.5	58.8	7.06	145	0.65	AWG24 UL1430	c
JB57BYG060	2	2.6	2.0	1.3	3.0	61.74	5.88	118	0.60	AWG22 UL3266	b
JB57BYG061	2	6	0.5	12	24	3.33	3.33	60	0.45	AWG26 UL1007	e
JB57BYG066	4	6	0.85	7.1	9.0	41.16	5.88	118	0.60	FF46-1	a
JB57BYG069	4	6	1.2	5.0	8.0	58.8	7.06	145	0.65	FF46-1	a
JB57BYG070	4	5.4	1.5	3.6	6.0	88.2	9.80	230	1.0	FF46-1	a
JB57BYG084	4	12	0.6	20	22	58.8	7.06	145	0.65	AWG26 UL1007	a
JB57BYG085	2	12	0.36	32	62	35.28	3.33	60	0.45	AWG26 UL1007	f
JB57BYG106	2	8.4	0.7	12	30	68.6	7.06	145	0.65	AWG26 UL1007	e
JB57BYG401	2	24	0.38	64	120	34.3	3.33	60	0.45		
JB57BYG501	4	2.3	2.3	1.0	2	49	5.88	118	0.60	AWGA24 UL1007	g
JB57BYG601	4	2.25	2.25	1.0	2	58.8	7.06	145	0.65	AWGA24 UL1001	g
JB57BYG602	4	4.2	1.5	2.6	5	58.8	7.06	145	0.65	AWGA22 UL3226	h
JB57BYG701	4	3.36	2.0	1.68	2	88.2	9.80	230	1.0	AWGA24 UL1007	g

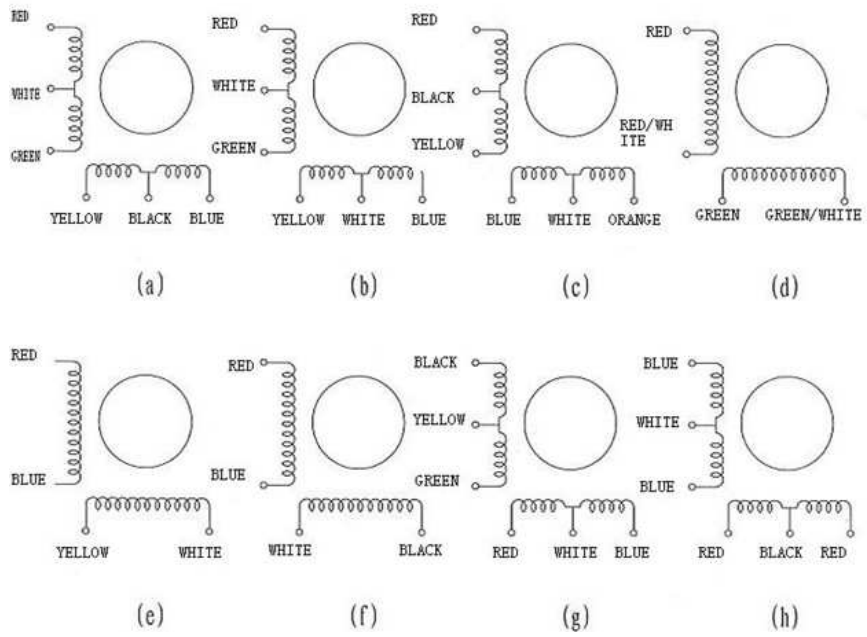
Parameter / model	007	008	009	027	055	056	057	059	060	061	066	069	070	084	085	106	401	501	601	602	701
L (mm)	320	320	320	300	400	400	400	300	300	1500	400	400	300	300	300	1500	500500	500	500	200	500
L1 (mm)	41	51	57	51	41	41	51	56	51	41	51	56	76	56	41	56	41	51	56	56	76
L2 (mm)	21	21	21	22	21	21	21	25.4	20	21	21	21	21	21	21	21	21	21	21	21	21
D (mm)	6.35	6.35	6.35	6.35	6.35	6.35	6.35	6.35	6.35	-0.013 6.3 -0.028	6.35	6.35	6.35	6.35	6.35	-0.013 6.3 -0.028	6.35	6.35	6.35	6.35	6.35



Dimensions



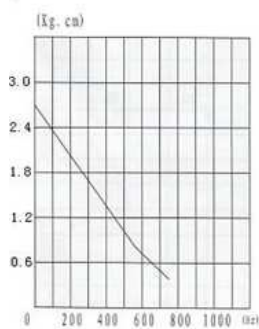
Wiring Diagram



○ Pull out torque curve

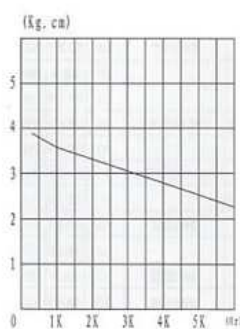
57BYG007

12V 0.38A



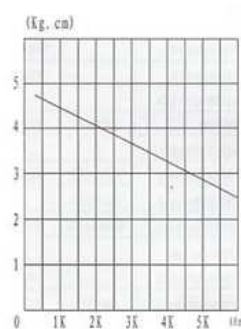
57BYG027

SH-2024B5
DC 30V 2A



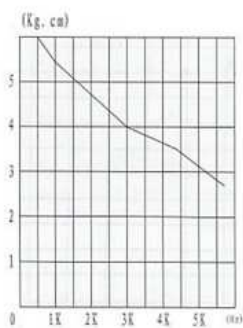
57BYG060

SH-2024B5
DC 30V 2A



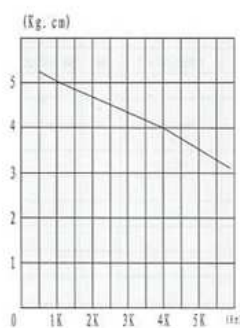
57BYG059

SH-2034M
DC 36V 1.6A



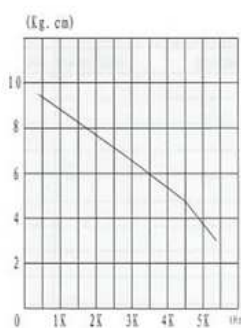
57BYG009

SH-2034M
DC 36V 2.4A



57BYG402

SH-2034M
DC 36V 2A



Changzhou Golden cup control motor CO.,LTD
 Tel: 0519--83661338 13806115733 Fax: 0519--83663662
 Add: Jiangsu Chang Zhou City western suburbs gift river town Zip: 213145