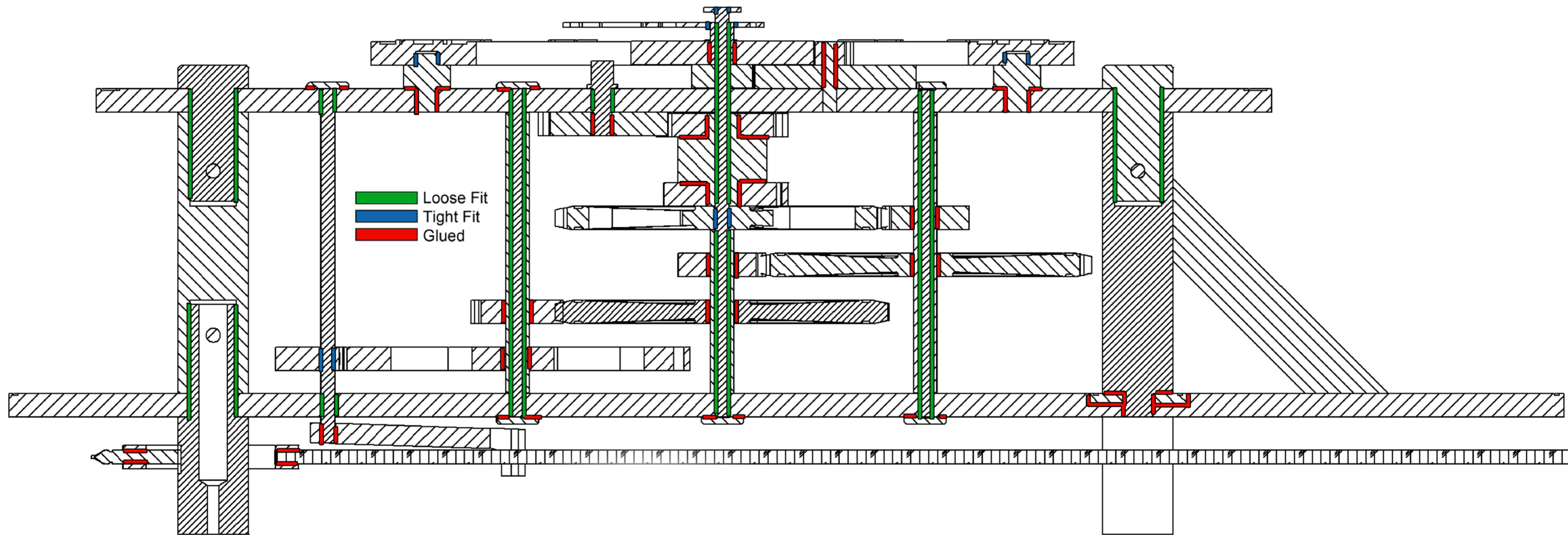
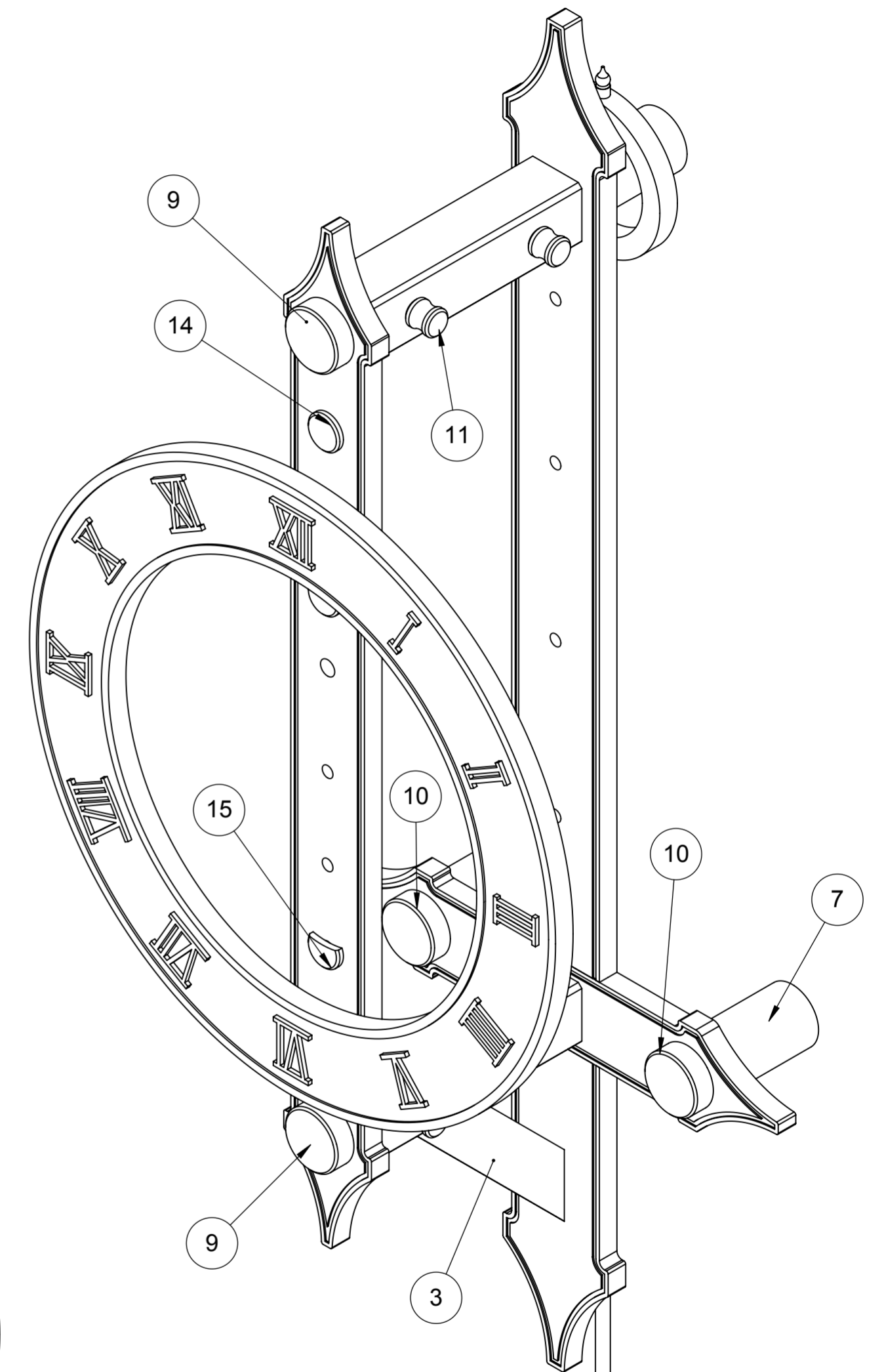
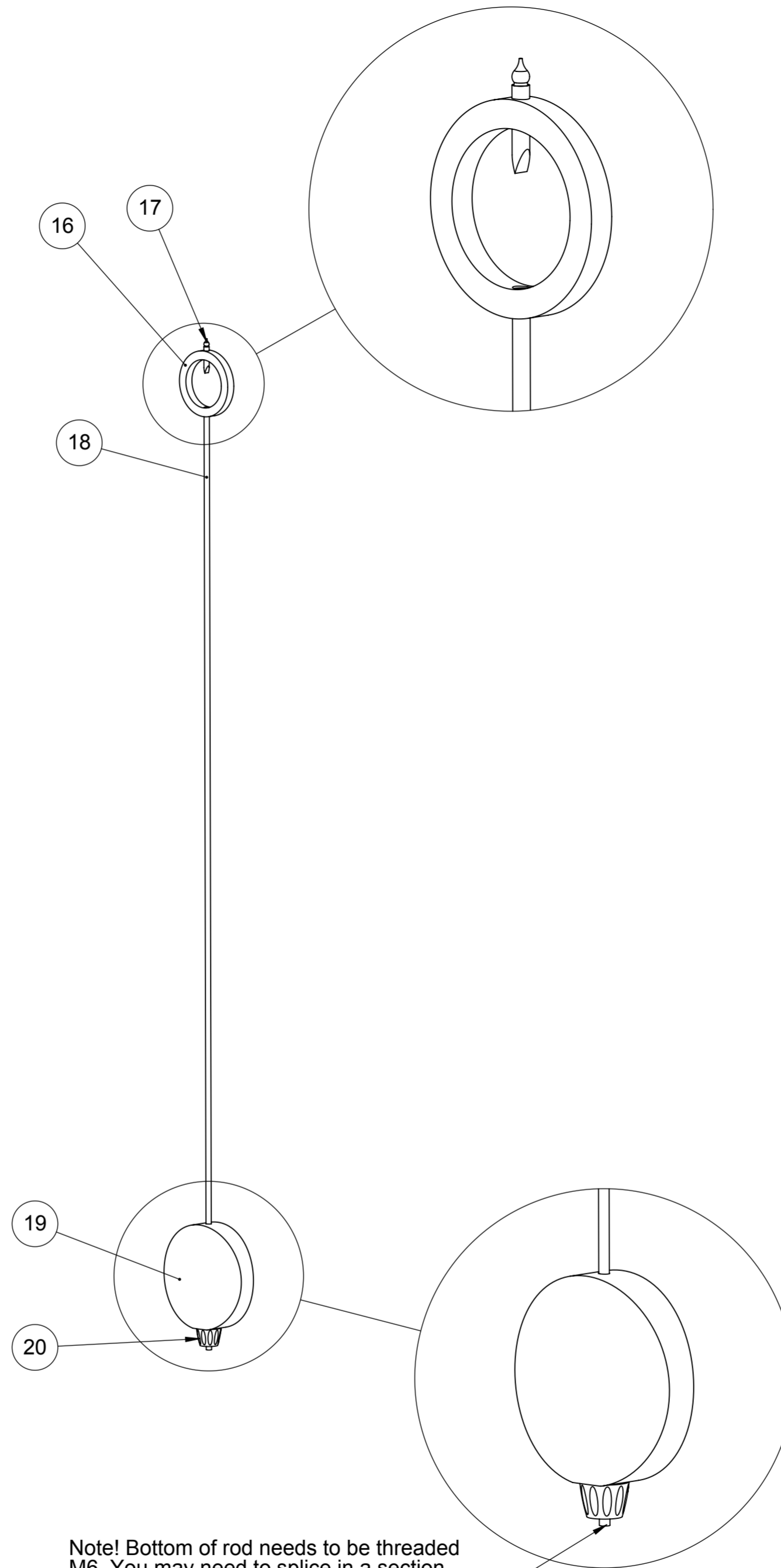
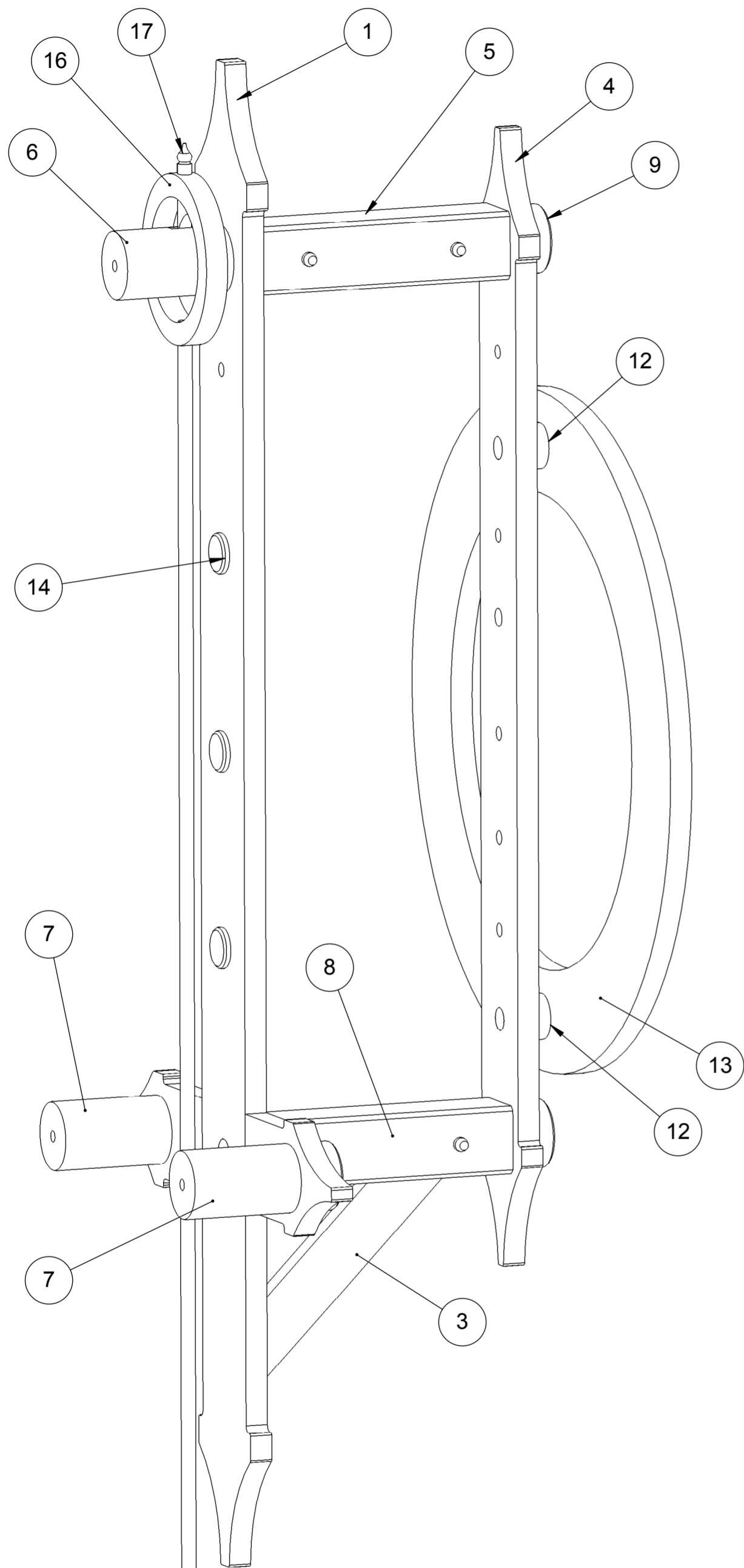
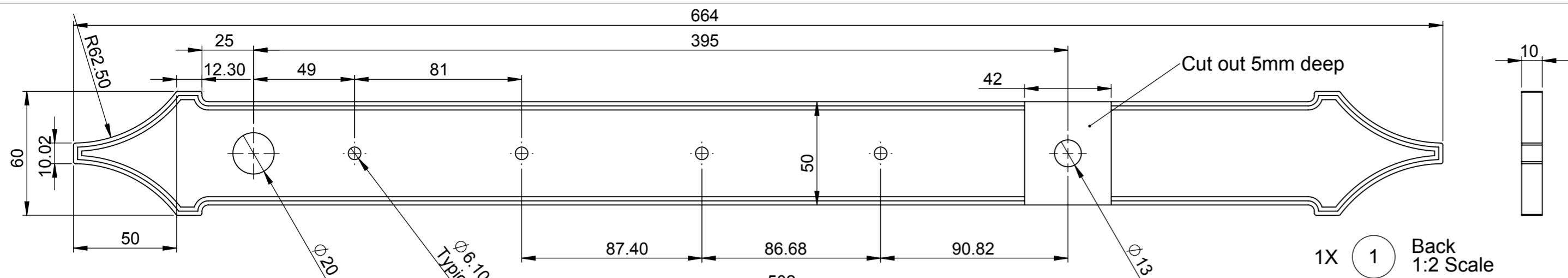


ITEM NO.	PART NUMBER	DESCRIPTION	QTY.
1	back	Wood	1
2	cross	Wood	1
3	Angled brace	Wood	1
4	front	Wood	1
5	squarespacer top	Wood	1
6	Pendulum hanger	Wood	1
7	Wall spacer	Wood	2
8	squarespacer bottom	Wood	1
9	Front pin	Wood	2
10	cover pin	Wood	2
11	Securing pin	Wood	3
12	Dial spacer	Wood	2
13	Clock dial	Wood	1
14	Shaft cover	Wood	5
15	Shaft cover	Wood	1
16	Pendulum head	Wood	1
17	Pendulum pivot	Wood or Brass	1
18	Pendulum rod	Wood or Carbon Fibre	1
19	Pendulum bob	Wood	1
20	Pendulum nut	Wood or Brass	1
21	Shaft 151	Brass	1
22	yoke	Wood	1
23	escape	Wood	1
24	Pallet2	Wood	1
25	Pallet1	Wood	1
26	Timing	Wood	1
27	16teeth	Wood	1
28	Shaft 140	Brass	2
29	Sleeve 119	Wood or Perspex tube	2
30	Shaft 175	Brass	1
31	15teeth 1.5	Wood	1
32	Pawl	Wood	1
33	Sleeve 70	Wood or Perspex tube	1
34	15teeth	Wood	2
35	drum	Wood	1
36	60teeth	Wood	2
37	Ratchet	Wood	1
38	60teeth	Wood	1
39	Pawl pin	Wood	1
40	32teeth	Wood	1
41	10teeth	Wood	1
42	sleeve 18	Wood or Perspex tube	1
43	Weight	To suit	1
44	shaft 30	Brass	1
45	8teeth	Wood	1
46	30teeth	Wood	1
47	15teeth 1.5	Wood	1
48	Key shaft	Wood	1
49	Minute hand	Plastic	1
50	Hour hand	Plastic	1
51	rope	Cord 1.2mm	1

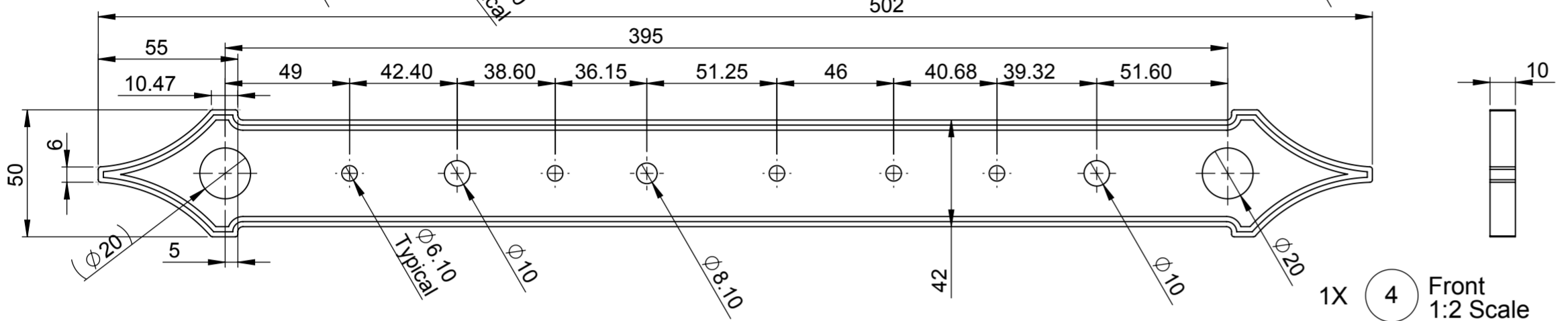




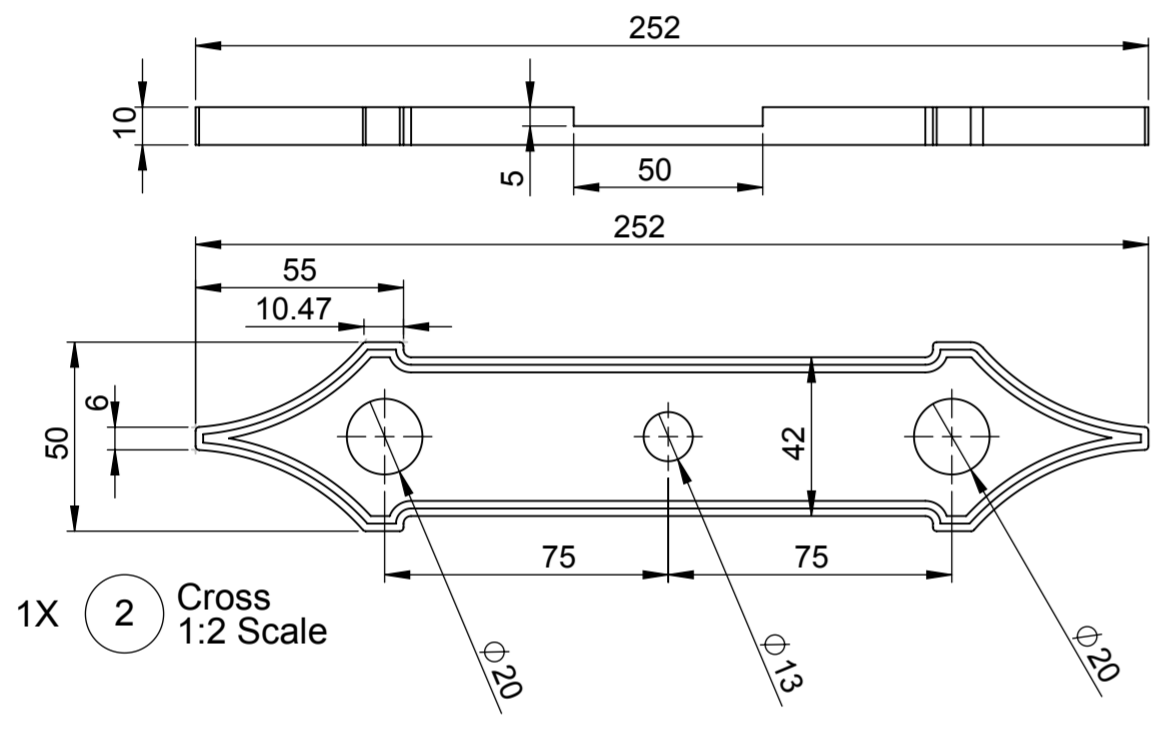
Note! Bottom of rod needs to be threaded M6. You may need to splice in a section of Brass to the bottom of the rod to do this. Still keep the overall length the same.



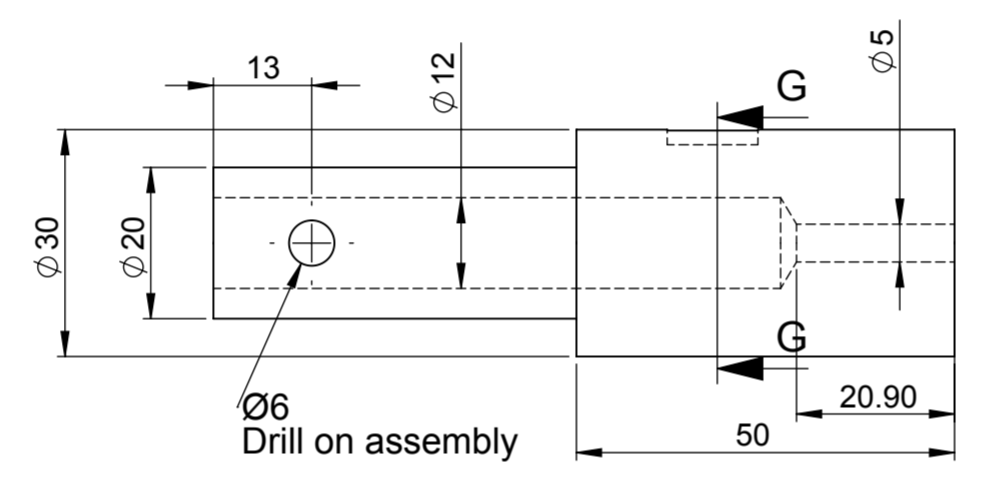
1X (1) Back
1:2 Scale



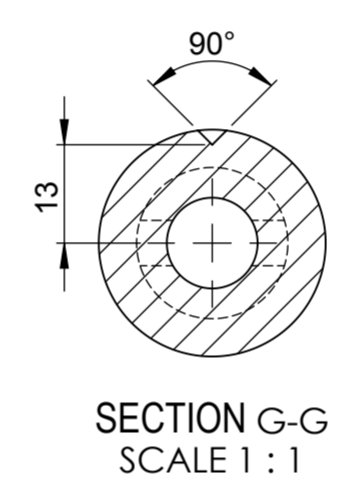
1X (4) Front
1:2 Scale



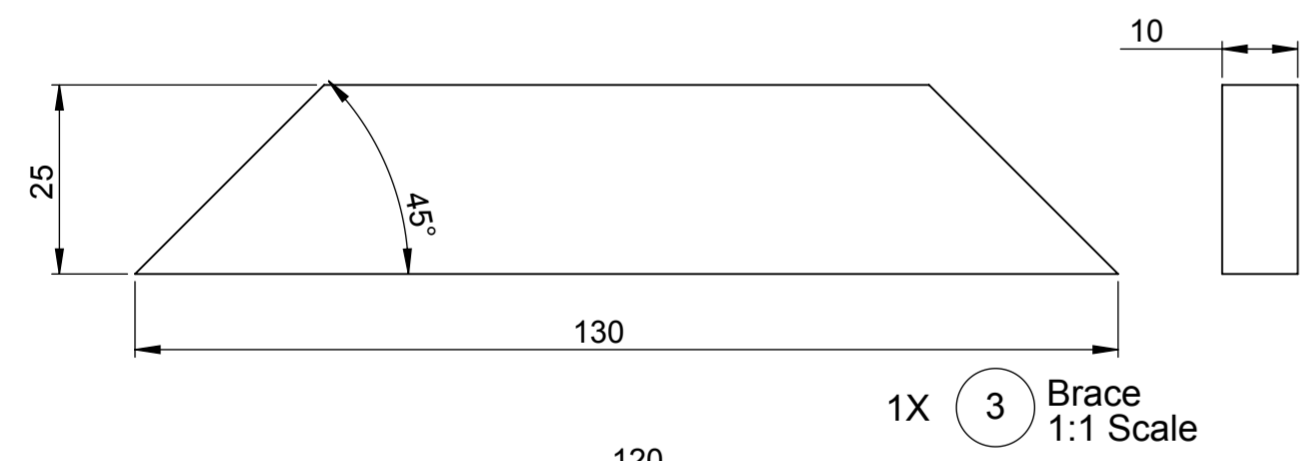
1X (2) Cross
1:2 Scale



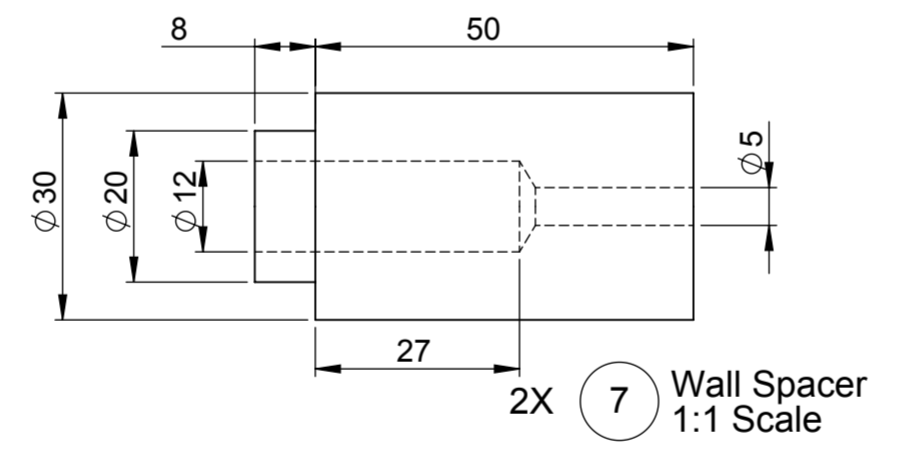
1X (6) Pendulum Hanger
1:1 Scale



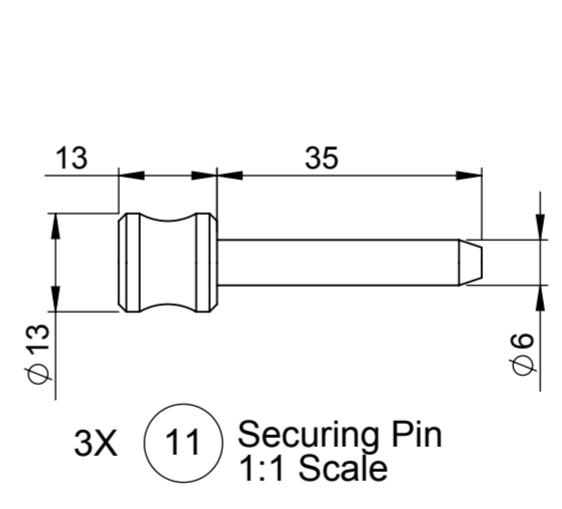
SECTION G-G
SCALE 1:1



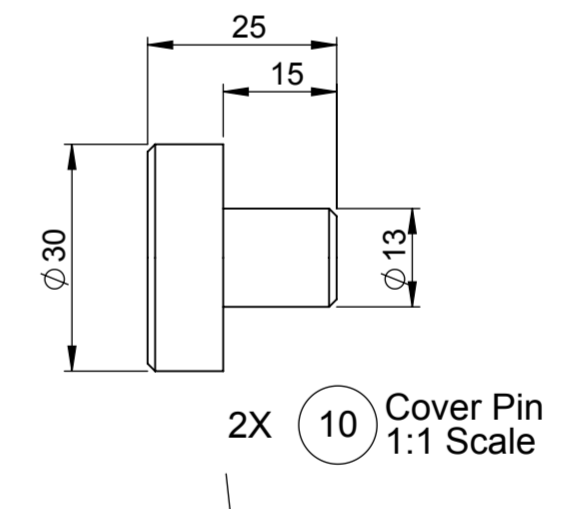
1X (3) Brace
1:1 Scale



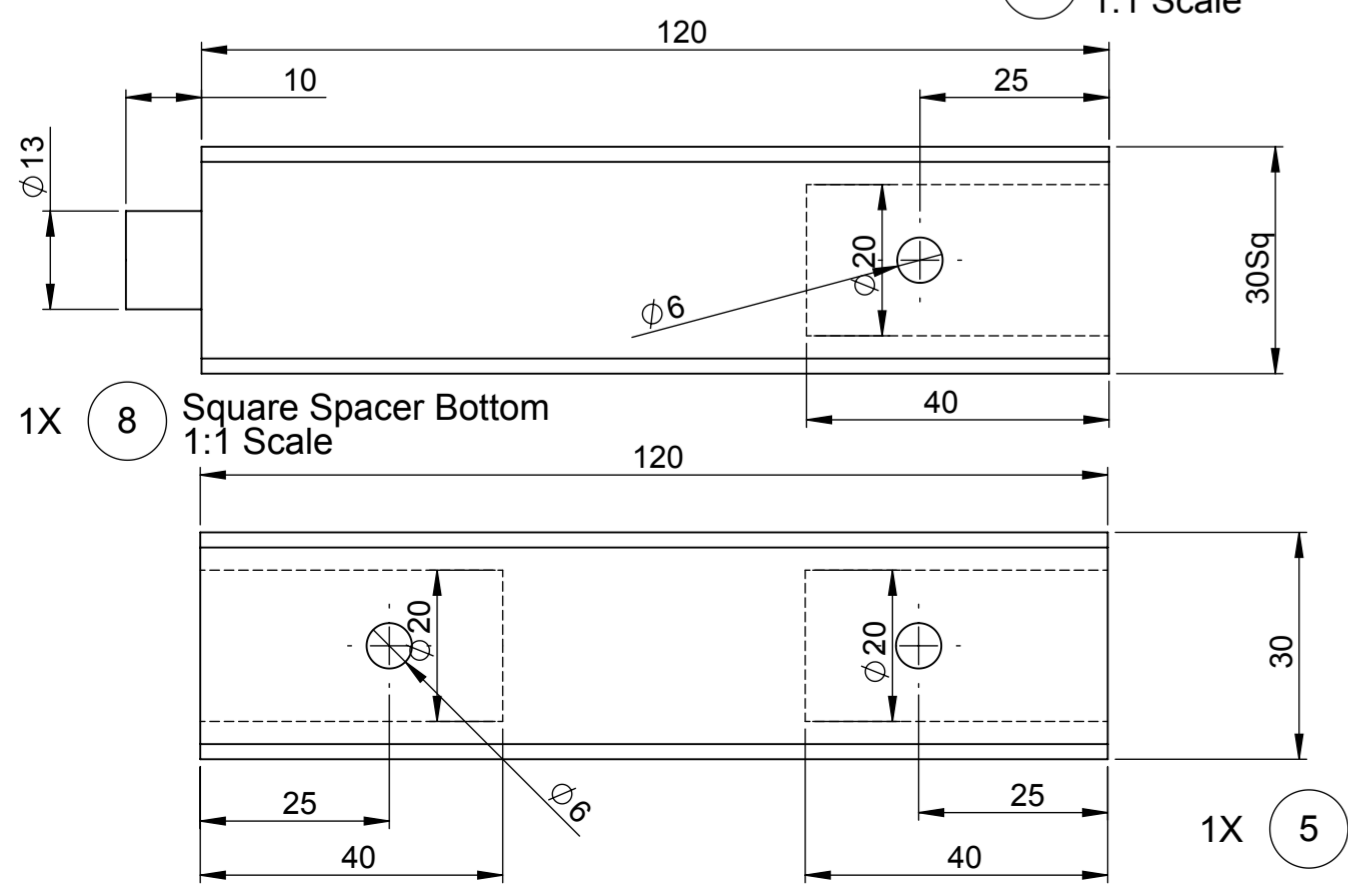
2X (7) Wall Spacer
1:1 Scale



3X (11) Securing Pin
1:1 Scale

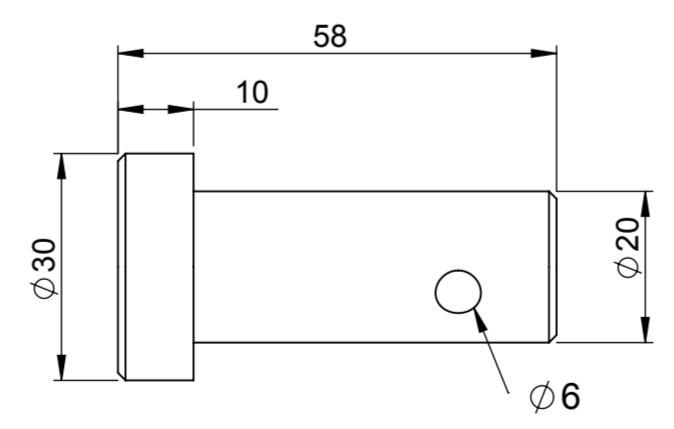


2X (10) Cover Pin
1:1 Scale

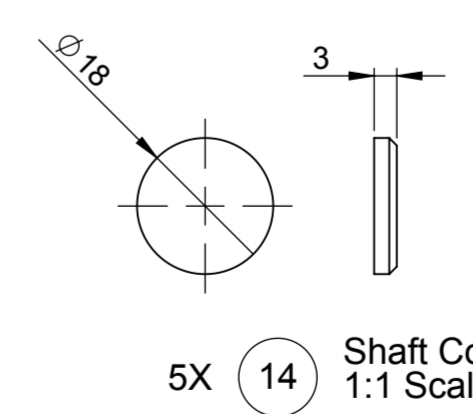


1X (8) Square Spacer Bottom
1:1 Scale

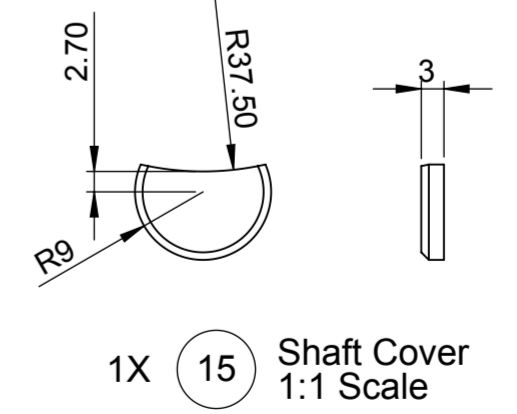
1X (5) Square Spacer Top
1:1 Scale



2X (9) Front Pin
1:1 Scale

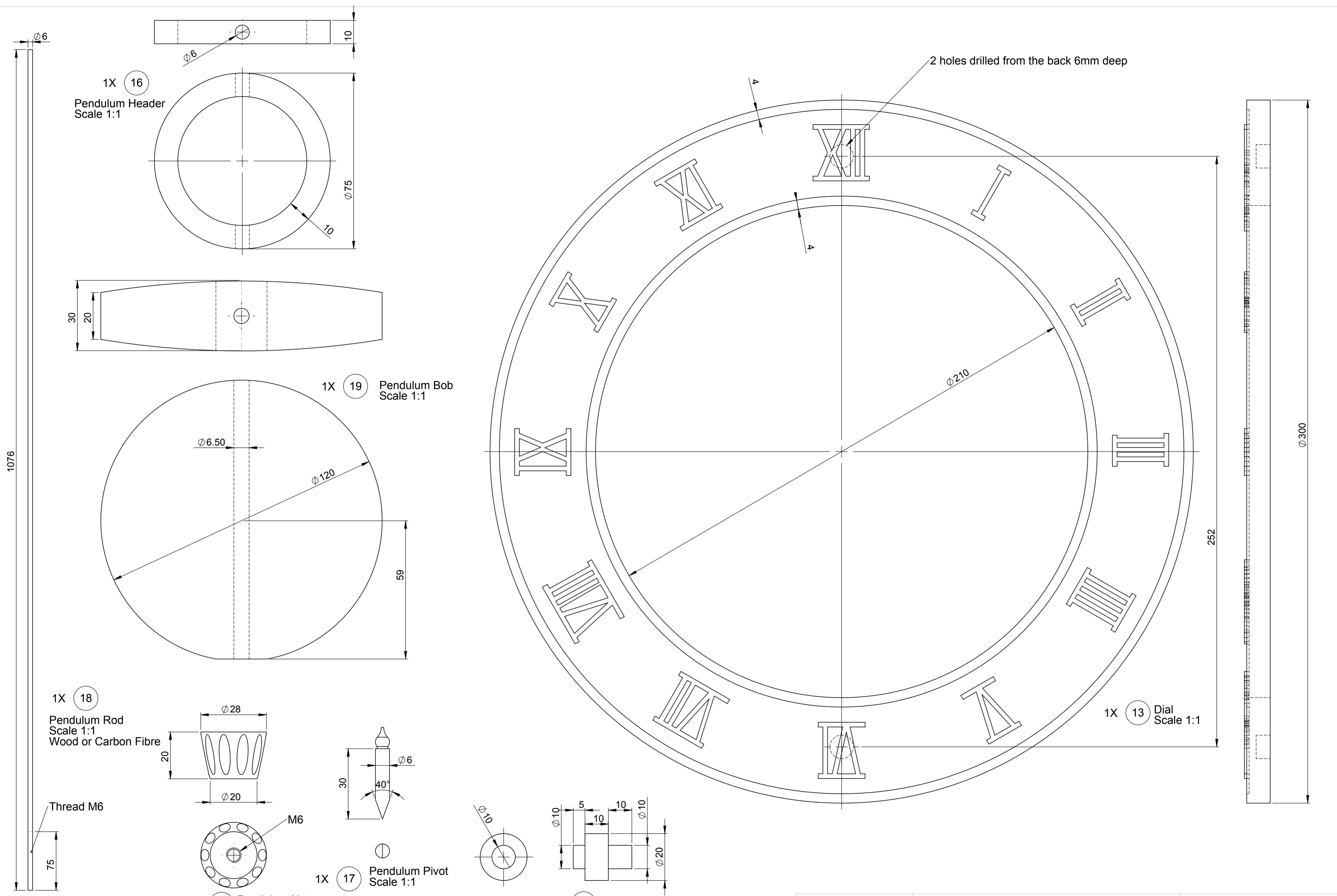


5X (14) Shaft Cover
1:1 Scale



1X (15) Shaft Cover
1:1 Scale

Sht 5 of 9 Shts	A2	Brian Law's Wooden Clock 1
Scale 1:1 UOS		All dimensions in mm and (inches) 3rd Angle projection
		Designed by: Brian Law www.woodenclocks.co.uk Nov 2013



1X (16) Pendulum Header Scale 1:1

1X (19) Pendulum Bob Scale 1:1

1X (18) Pendulum Rod Scale 1:1 Wood or Carbon Fibre

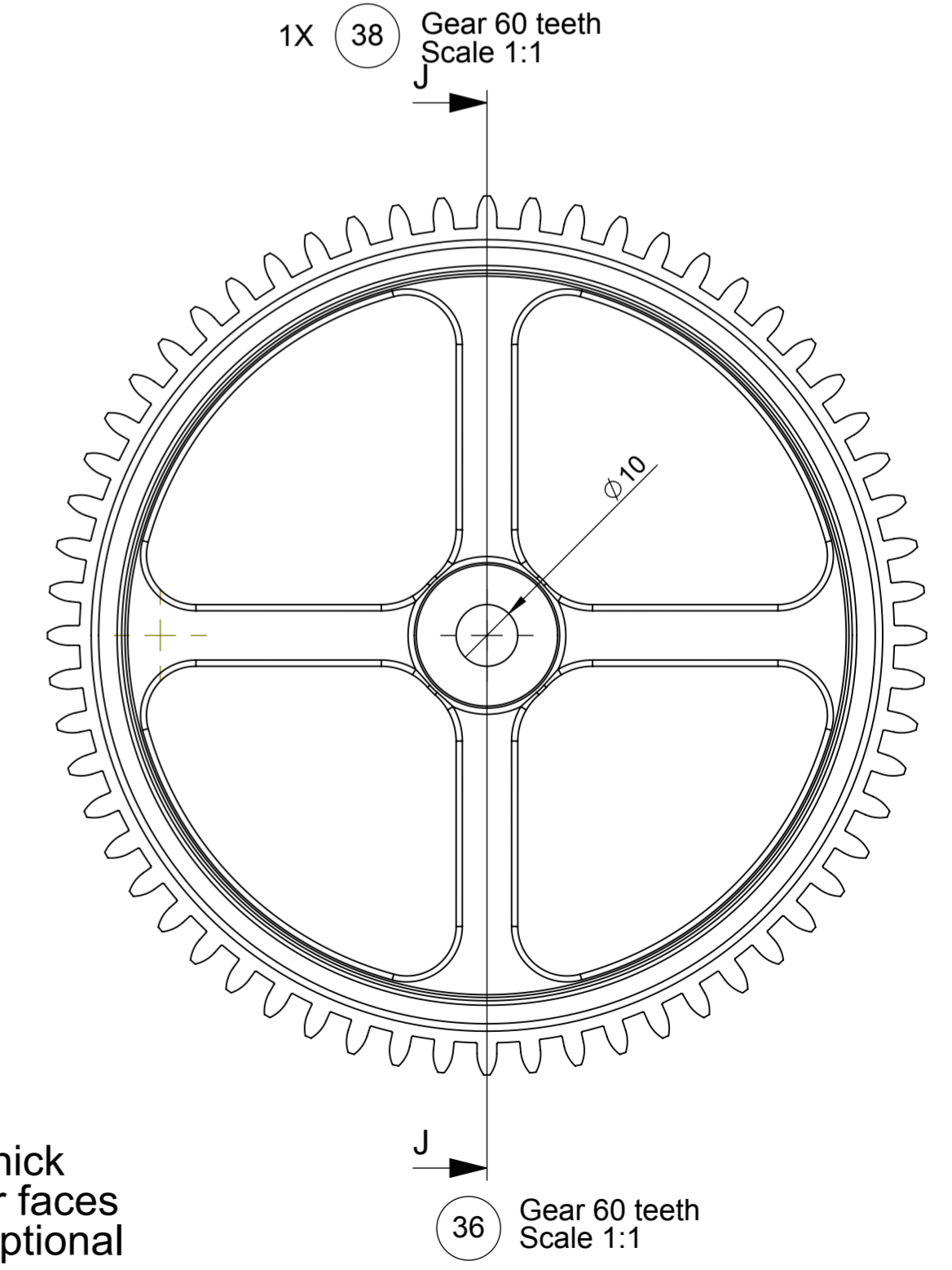
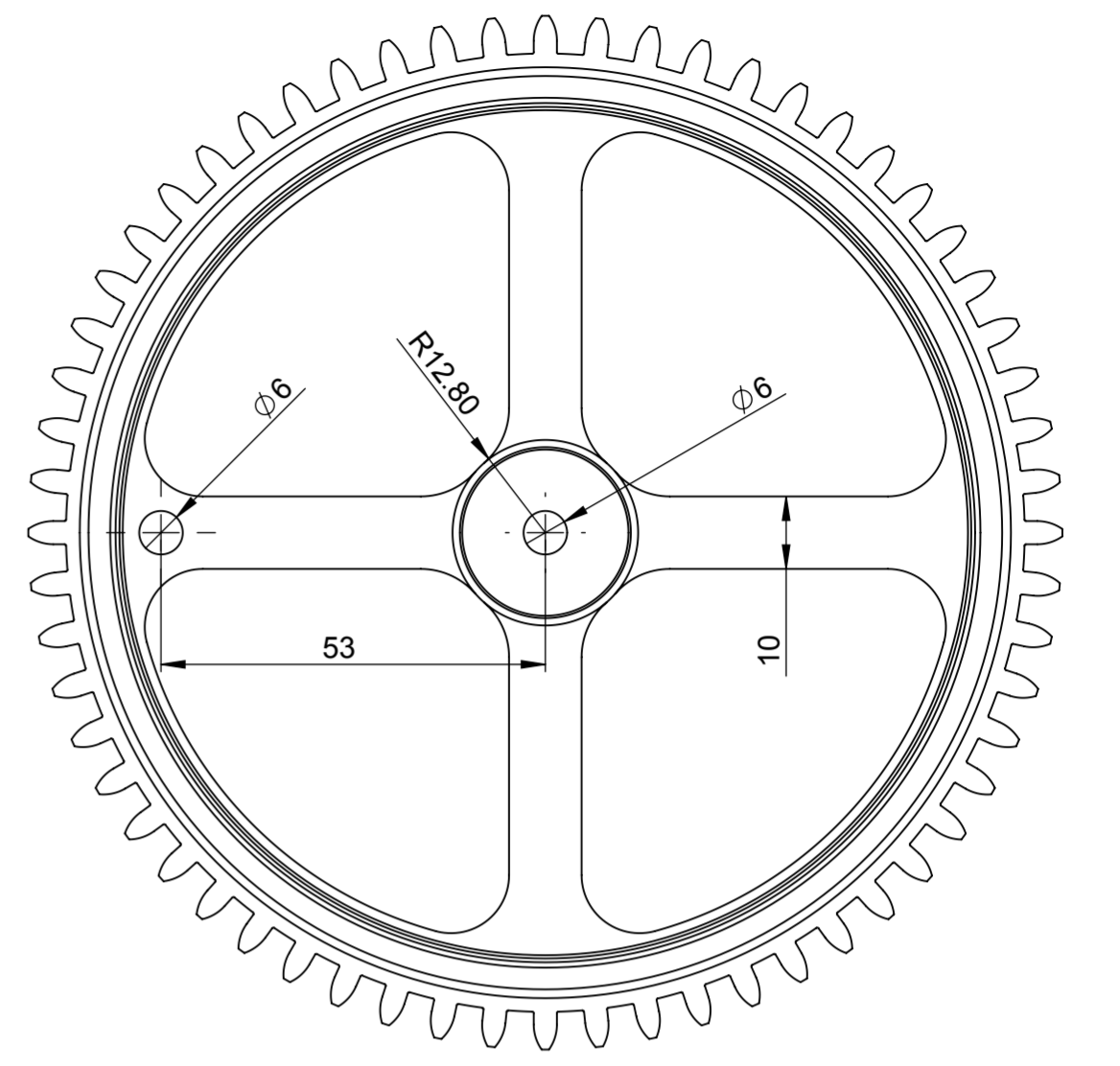
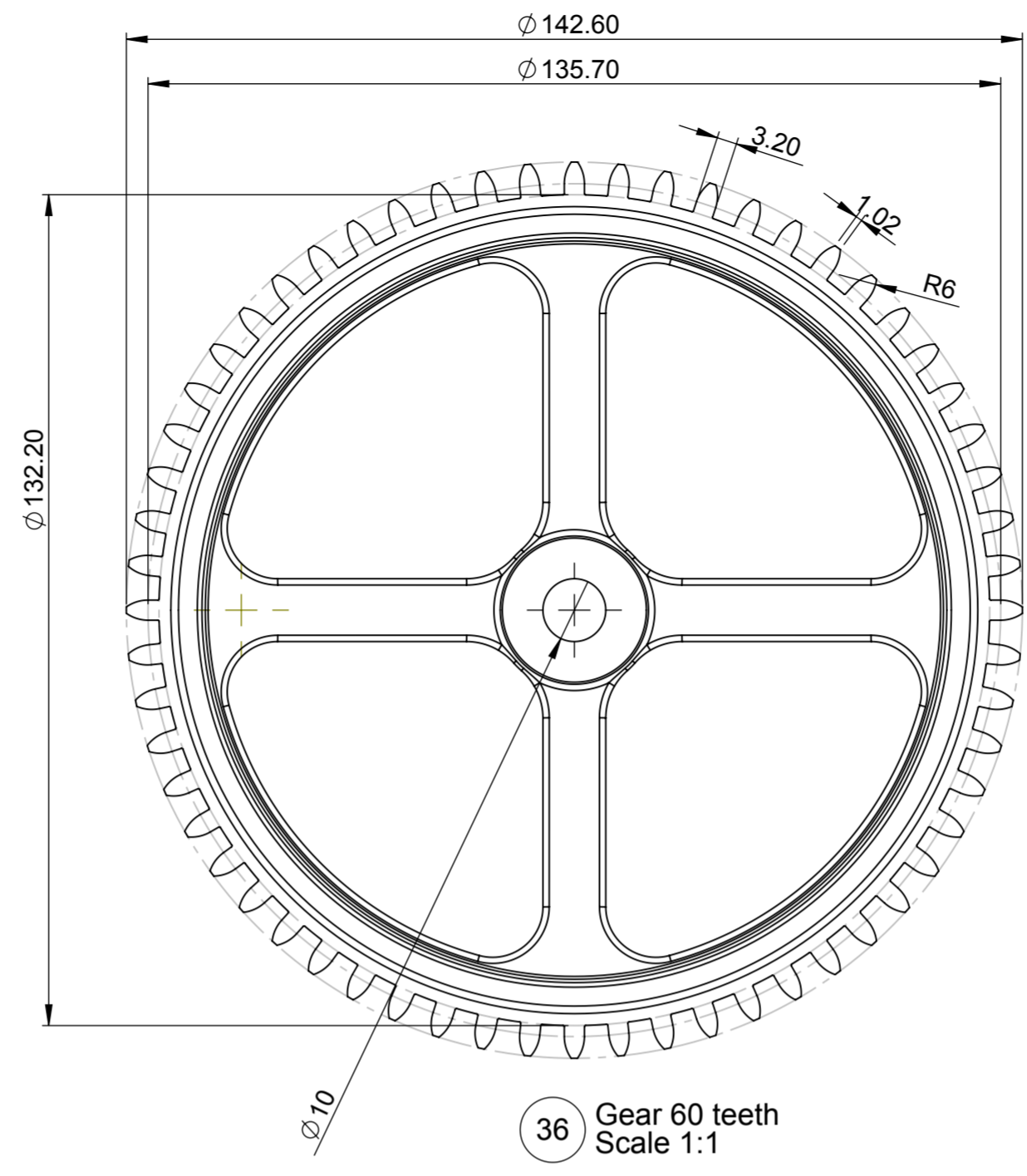
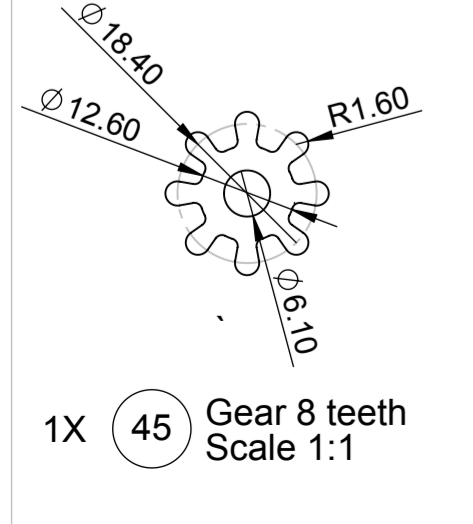
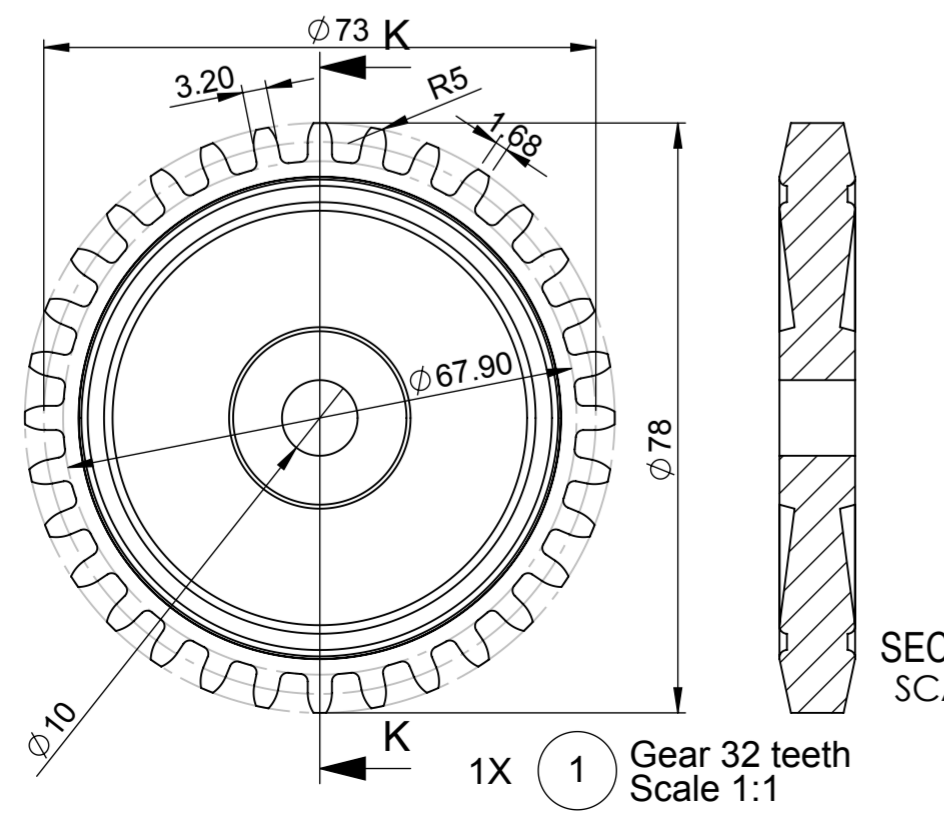
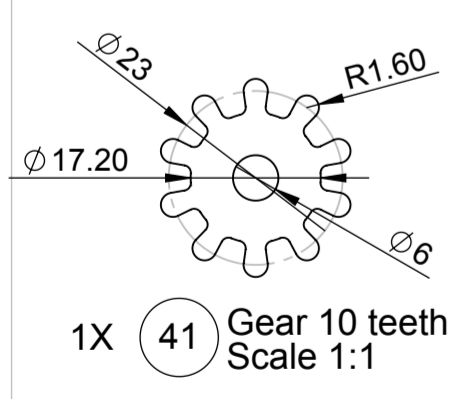
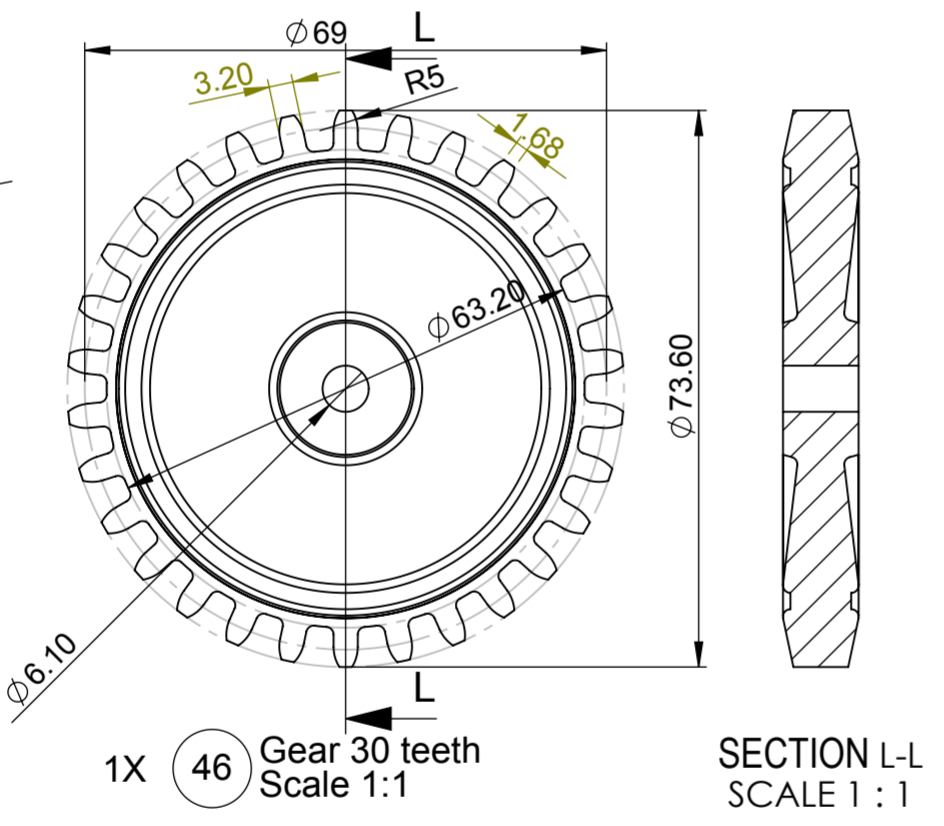
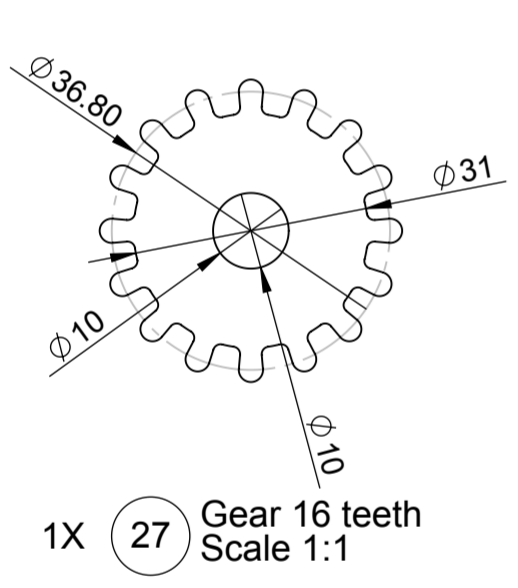
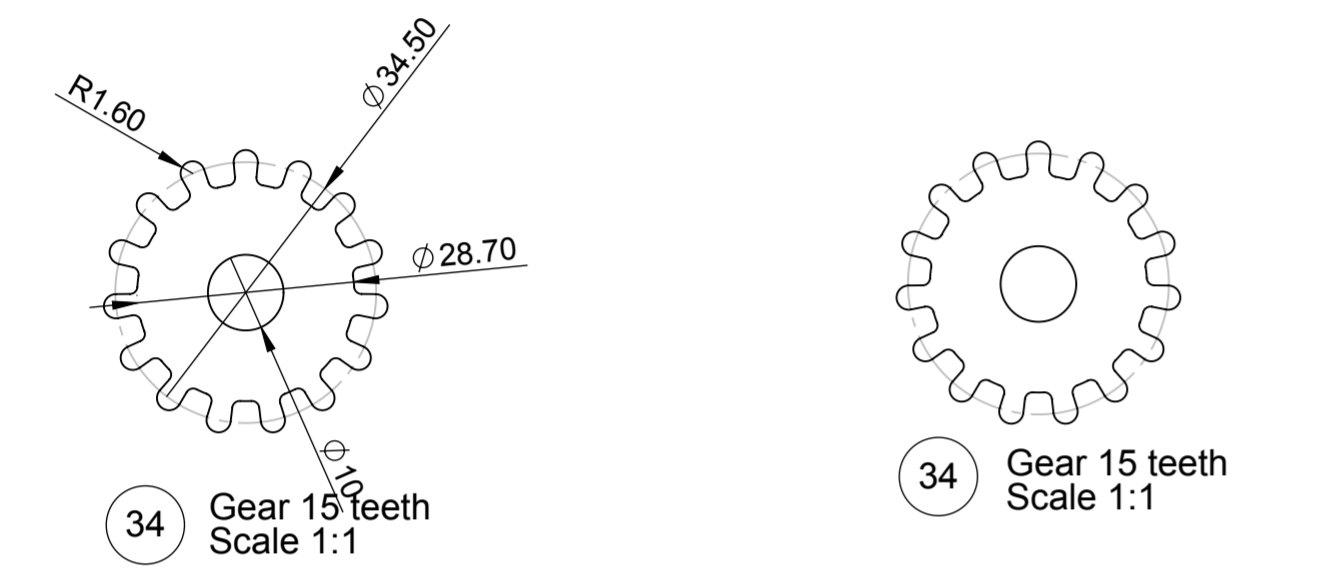
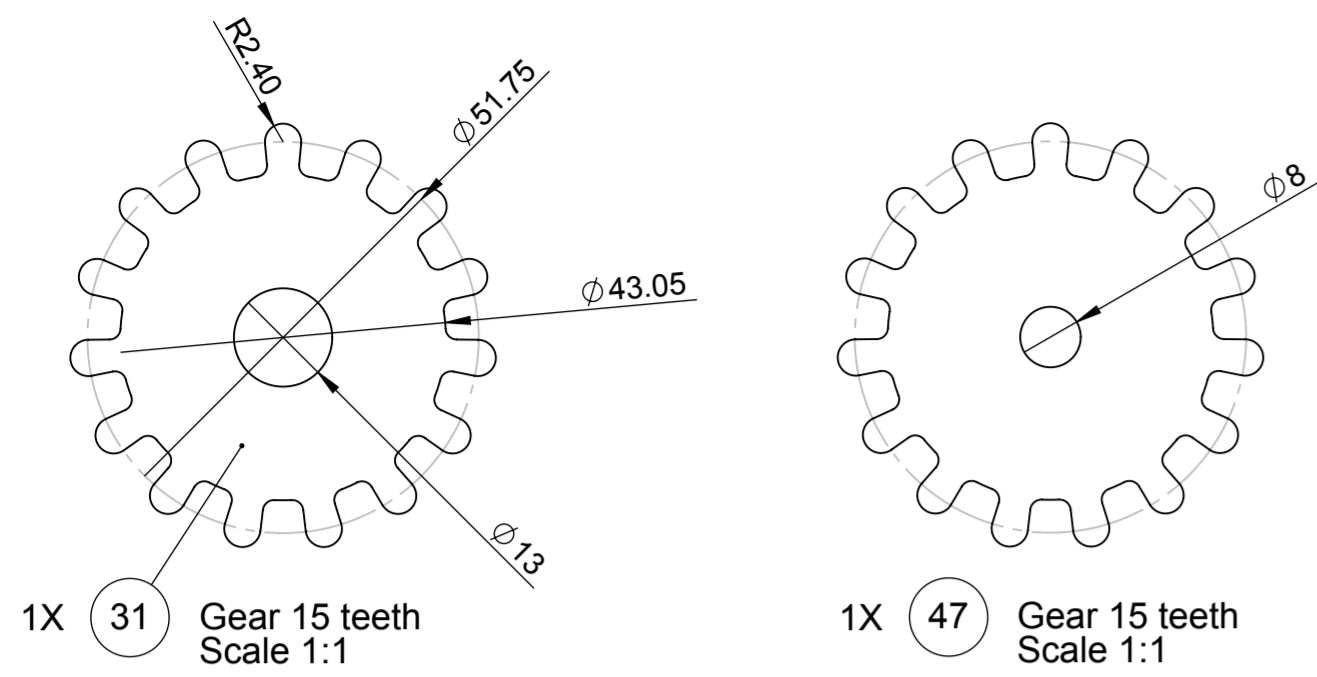
1X (17) Pendulum Pivot Scale 1:1

1X (20) Pendulum Nut Scale 1:1

2X (12) Dial Spacer Scale 1:1

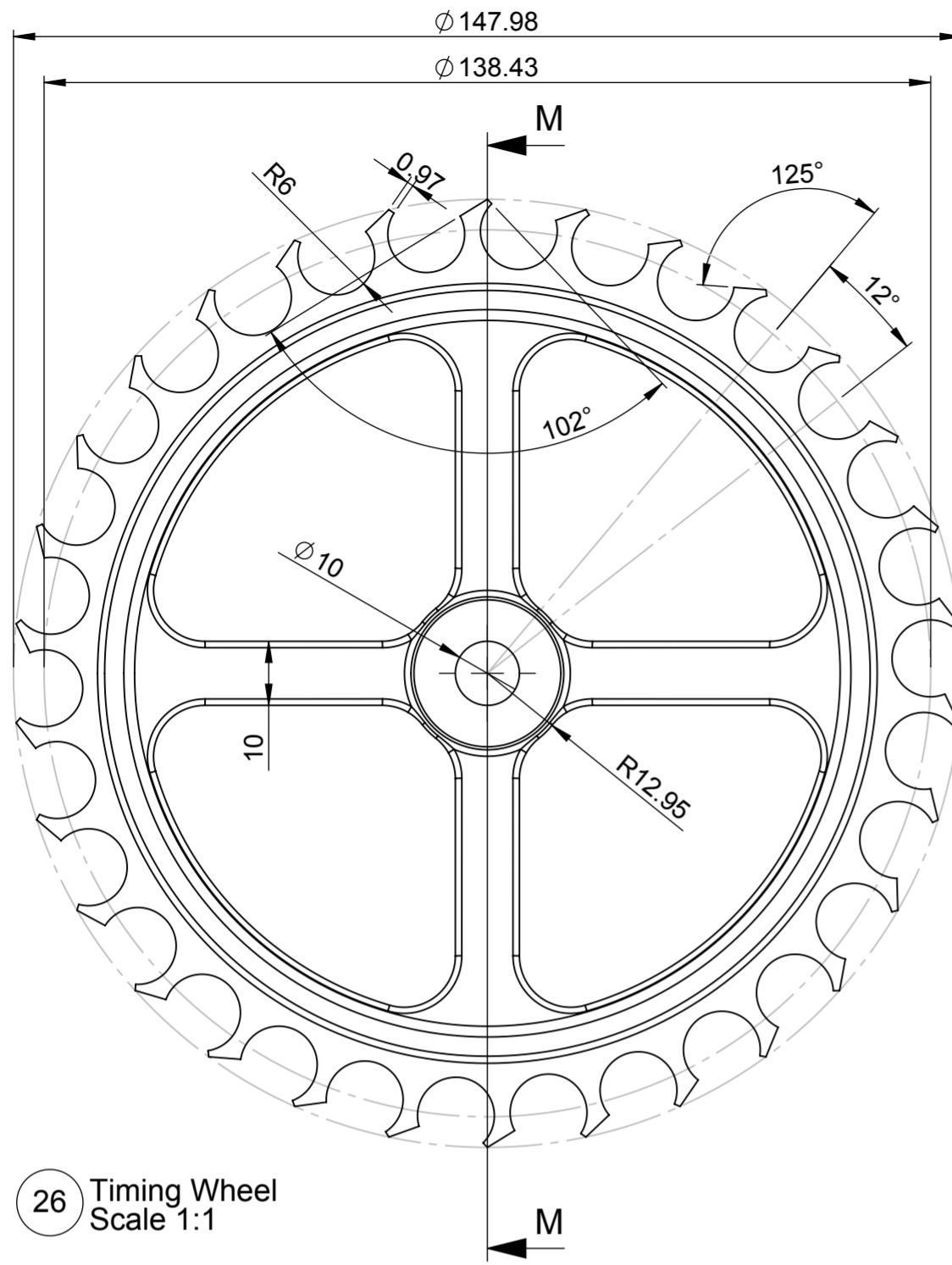
1X (13) Dial Scale 1:1

Sht 6 of 9 Shts	A2	Brian Law's Wooden Clock 1
Scale 1:1 UOS	All dimensions in mm and (inches) 3rd Angle projection	Designed by: Brian Law www.woodenclocks.co.uk Nov 2013

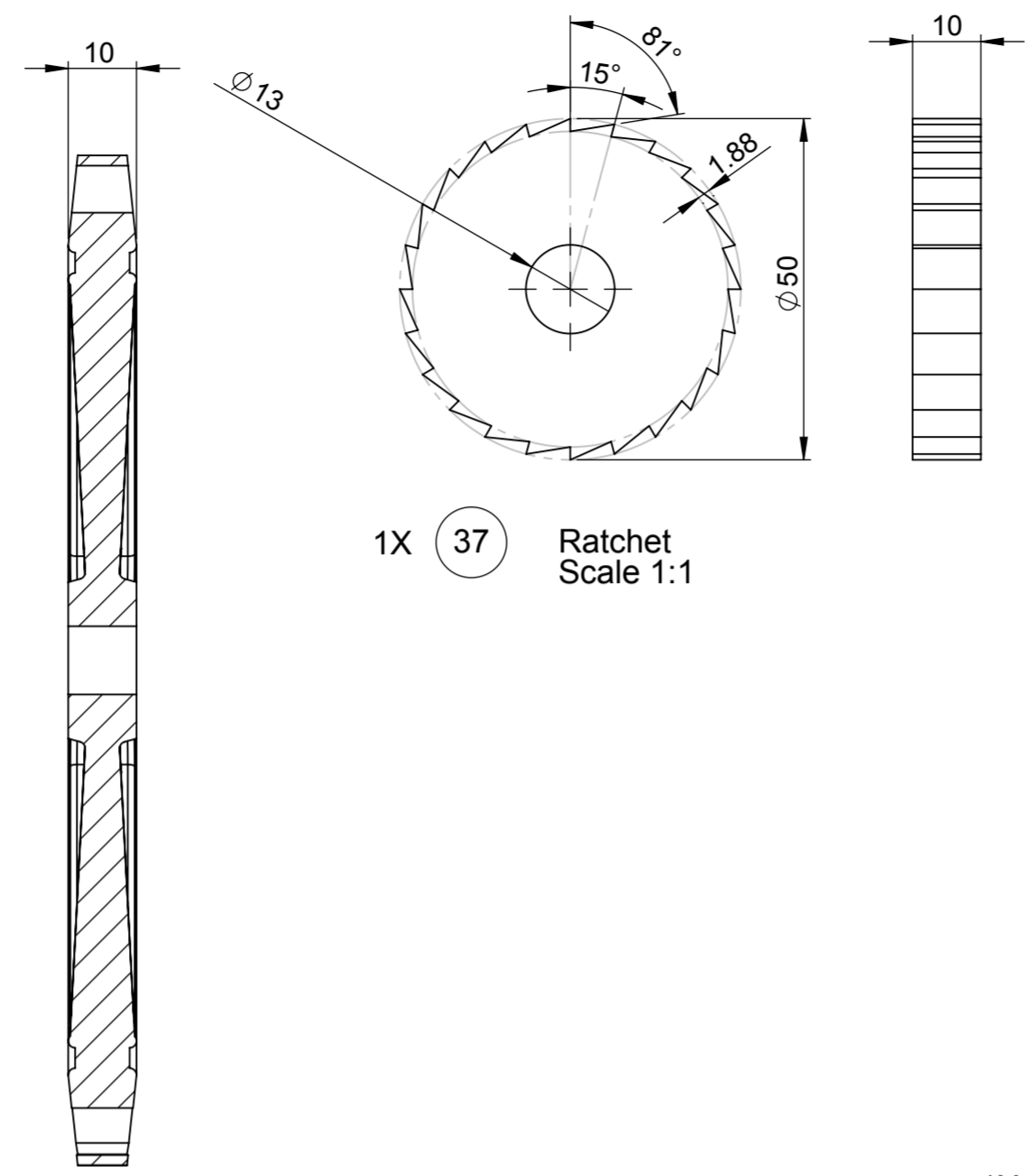


All gears 10mm thick
Profile of the gear faces
where shown is optional

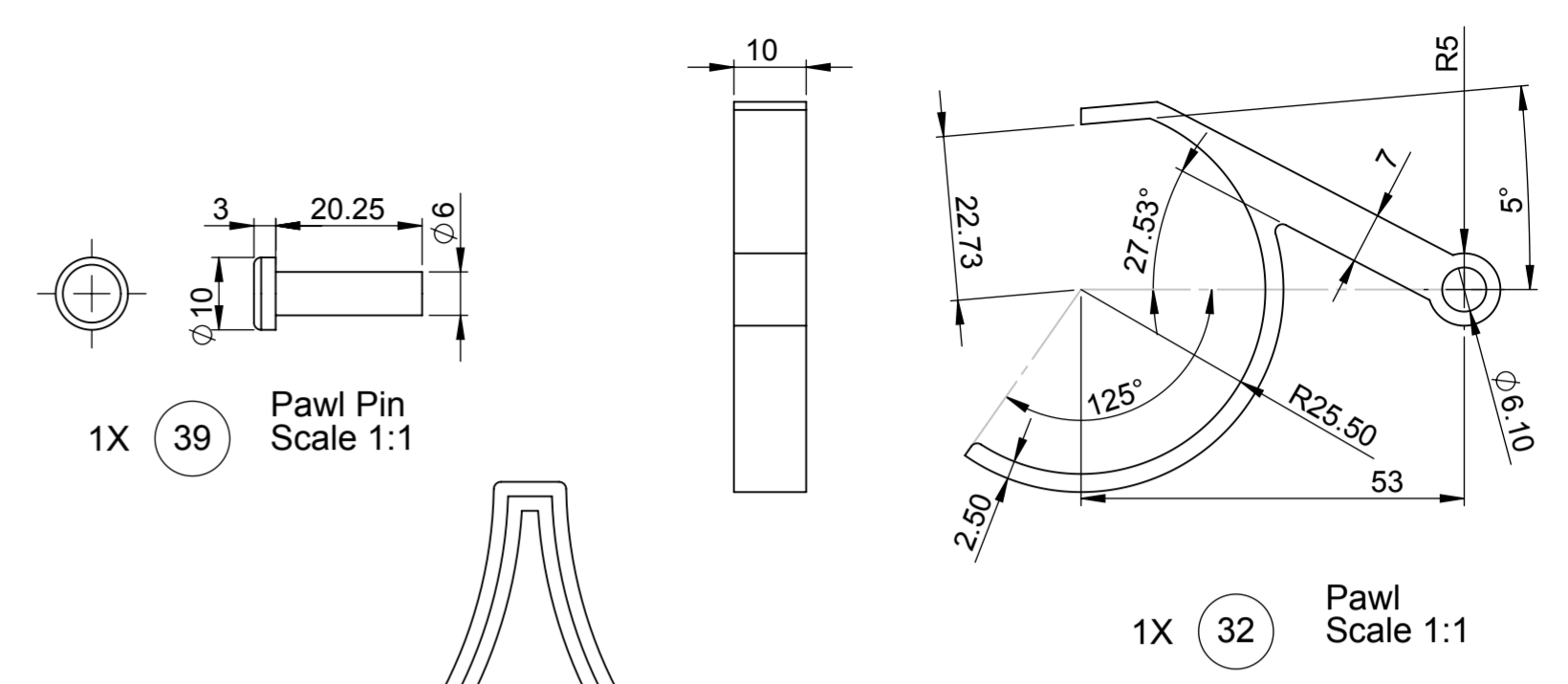
Sht 7 of 9Shts	A2	Brian Law's Wooden Clock 1	
Scale 1:1 UOS		All dimensions in mm and (inches) 3rd Angle projection	Designed by: Brian law www.woodenclocks.co.uk Nov 2013



1X (26) Timing Wheel
Scale 1:1



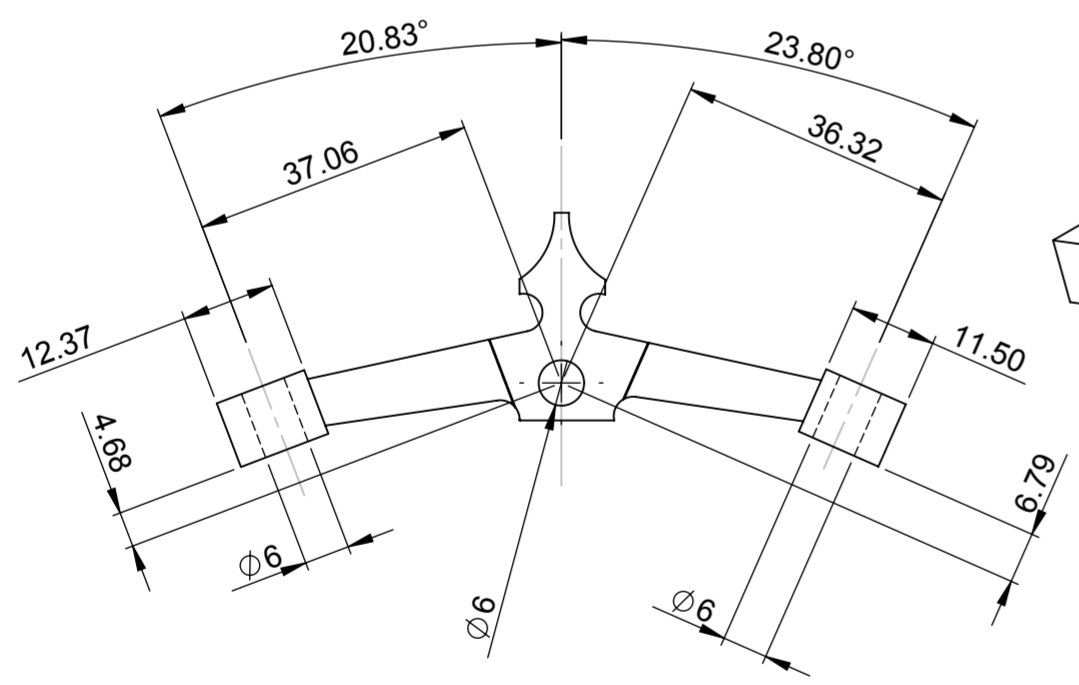
1X (37) Ratchet
Scale 1:1



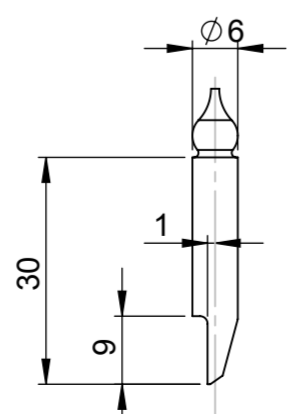
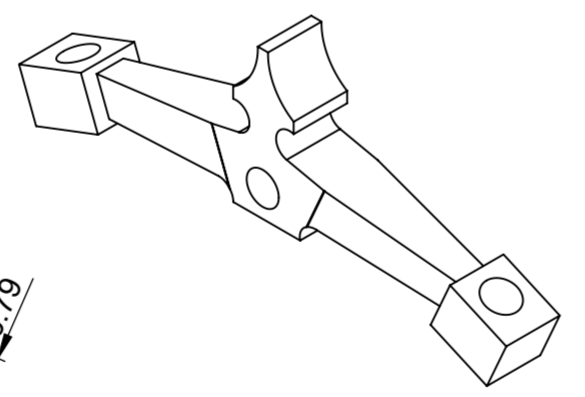
1X (39) Pawl Pin
Scale 1:1

1X (32) Pawl
Scale 1:1

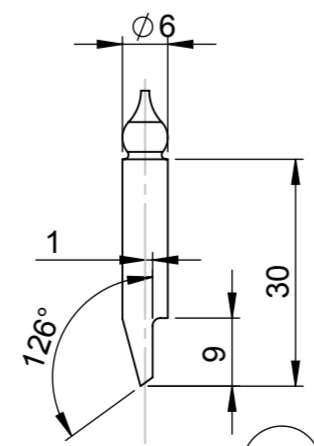
SECTION M-M



1X (23) Escapement
Scale 1:1

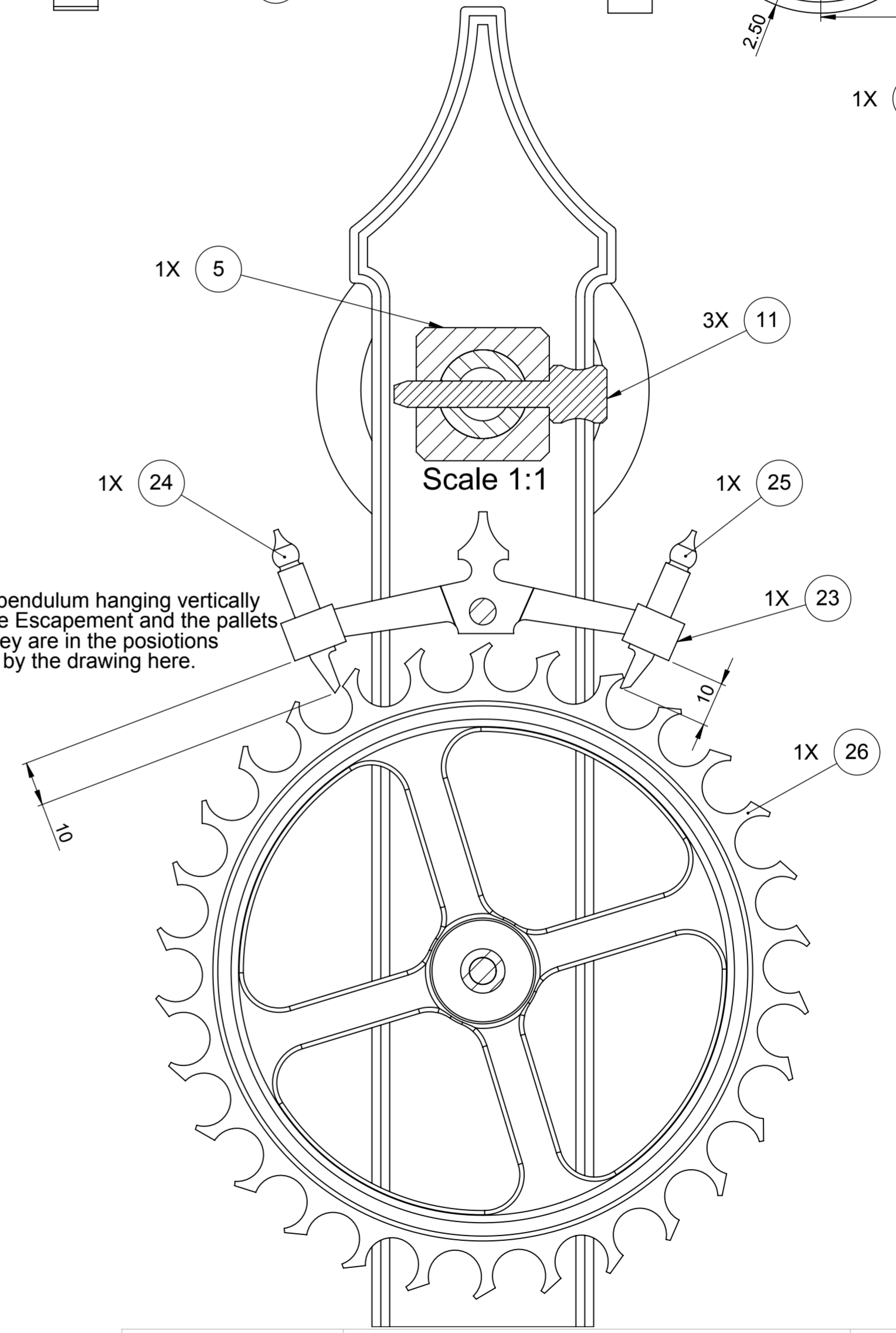


1X (25) Pallet 1
Scale 1:1

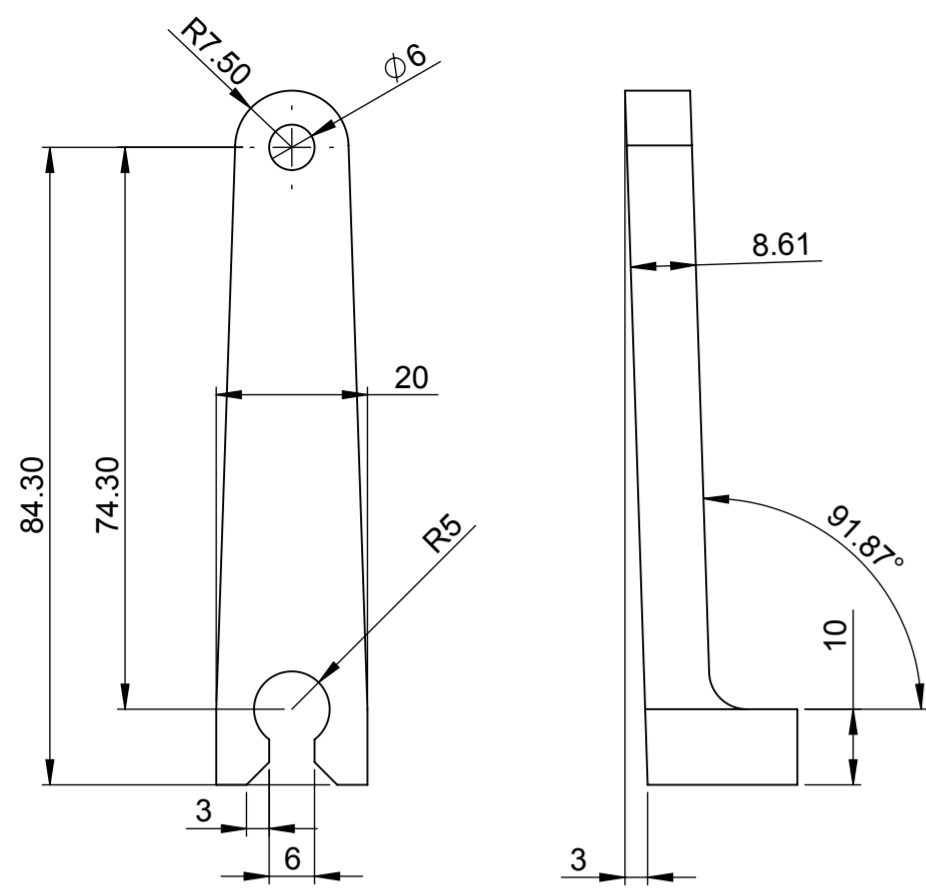


1X (24) Pallet 2
Scale 1:1

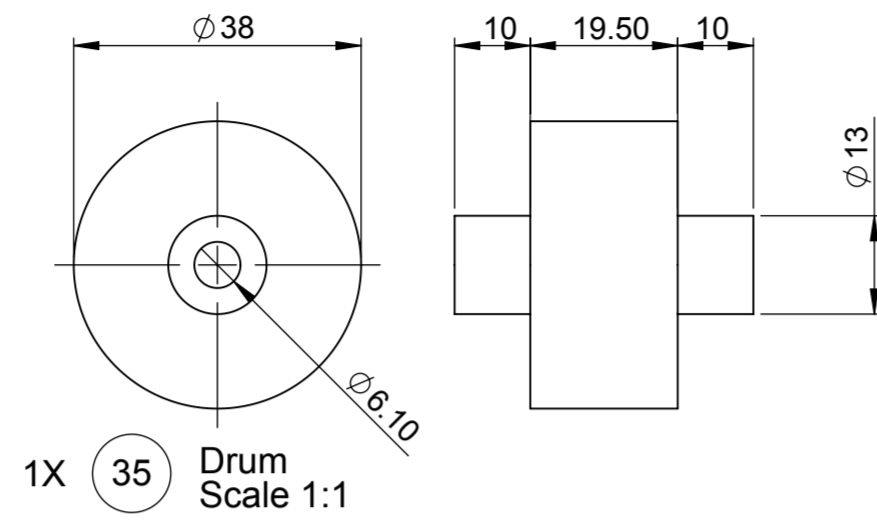
With the pendulum hanging vertically
Set up the Escapement and the pallets
so that they are in the positions
indicated by the drawing here.



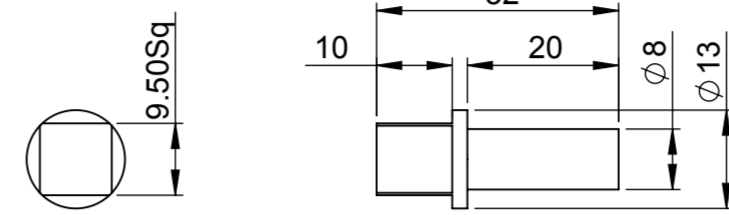
Sht 8 of 9Shts	A2	Brian Law's Wooden Clock 1
Scale 1:1 UOS		All dimensions in mm and (inches) 3rd Angle projection
		Designed by: Brian Law www.woodenclocks.co.uk Nov 2013



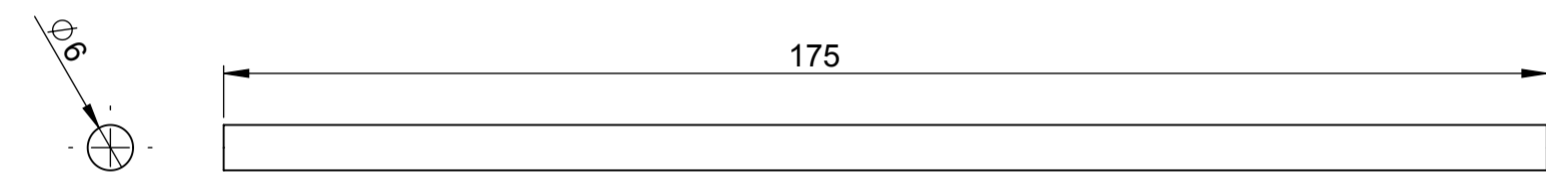
1X (22) Yoke
Scale 1:1



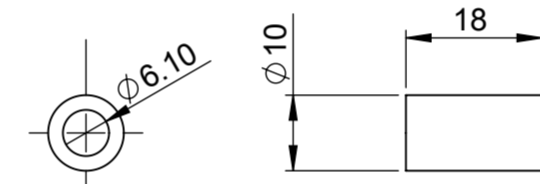
1X (35) Drum
Scale 1:1



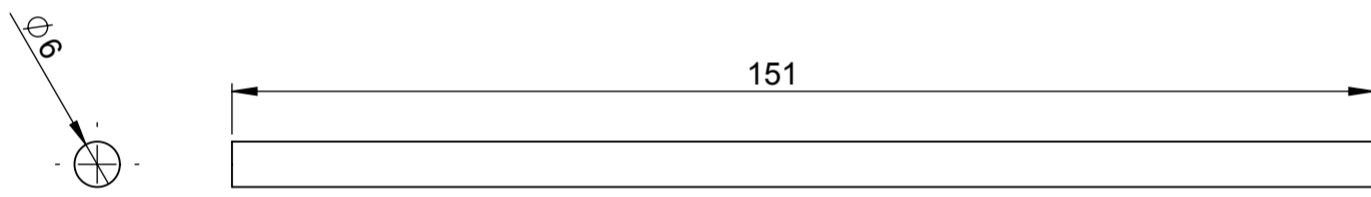
1X (48) Key Shaft
Scale 1:1



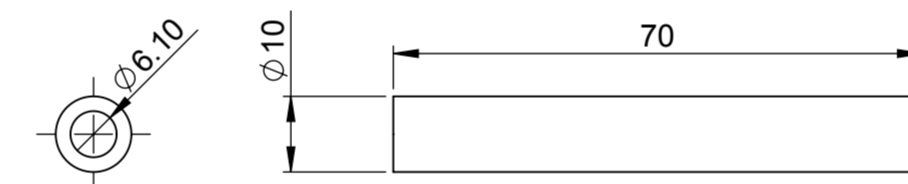
1X (30) Shaft 175
Scale 1:1
Brass



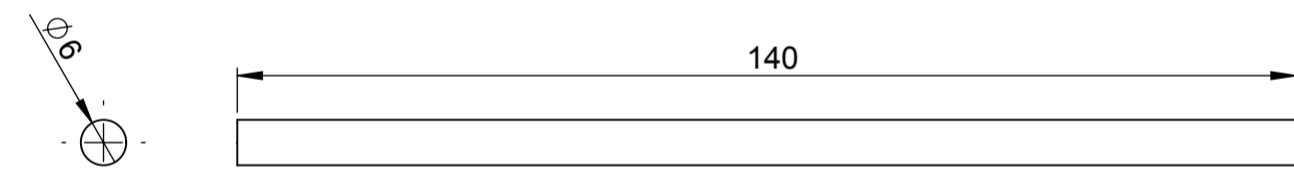
1X (42) Sleeve 18
Scale 1:1
Wood



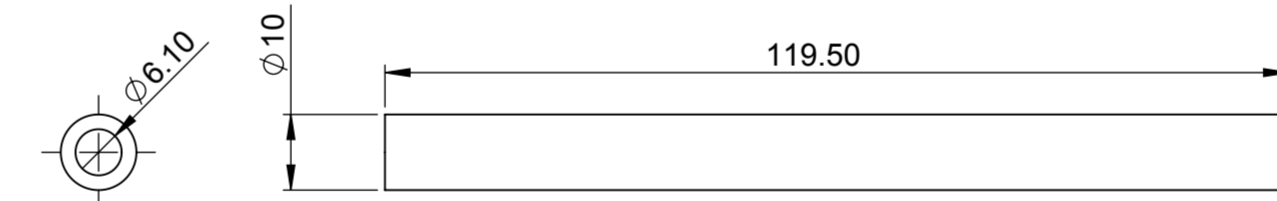
1X (21) Shaft 151
Scale 1:1
Brass



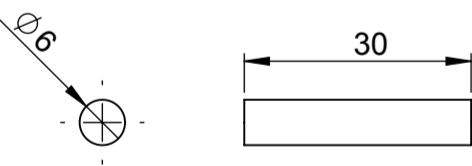
1X (33) Sleeve 70
Scale 1:1
Wood



2X (28) Shaft 140
Scale 1:1
Brass



2X (29) Sleeve 119
Scale 1:1
wood



1X (44) Shaft 30
Scale 1:1
Brass

Note! Sleeves may be made in multiples of shorter parts if it proves difficult to drill the long holes