

INPUT VOLTS	FUSE REQ'D	JUMPER	INPUT TO
200	12A	H2&H5	H1&H6
210	12A	H2&H5	H1&H7
220	10A	H3&H5	H1&H7
235	10A	H3&H5	H1&H8
250	10A	H4&H5	H1&H8

Interior Light JUMPER

INPUT	FUSE REQ'D	JUMPER	INPUT TO
200	12A	H2&H5	H1&H6
210	12A	H2&H5	H1&H7
220	10A	H3&H5	H1&H7
235	10A	H3&H5	H1&H8
250	10A	H4&H5	H1&H8

NOTE 1: Remove Jumper When Heat Option Is Installed

LAST WIRE NO. USED-153

Speedline Technologies, Inc., CAMALOT Division 145 WARD HILL AVENUE, HAVERHILL, MA 01835 USA	
DESIGNED: D.JOY CHECKED: M.SCOTT APPROVED: T.PRENTICE DATE: 08/01/2000	TITLE: SCH.,XYFLEX PRO,ELEC. FOR: XYFLEX-PRO REVISIONS:
08/06/01 ECN-7141 Aux. Contact Upgrade On CR3/CR6	PAGE: 1 of 10 NUMBER: 43414 Rev: B

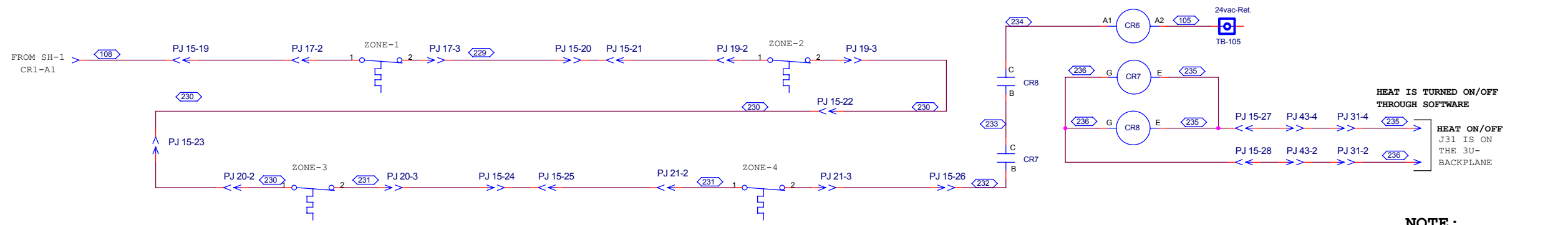
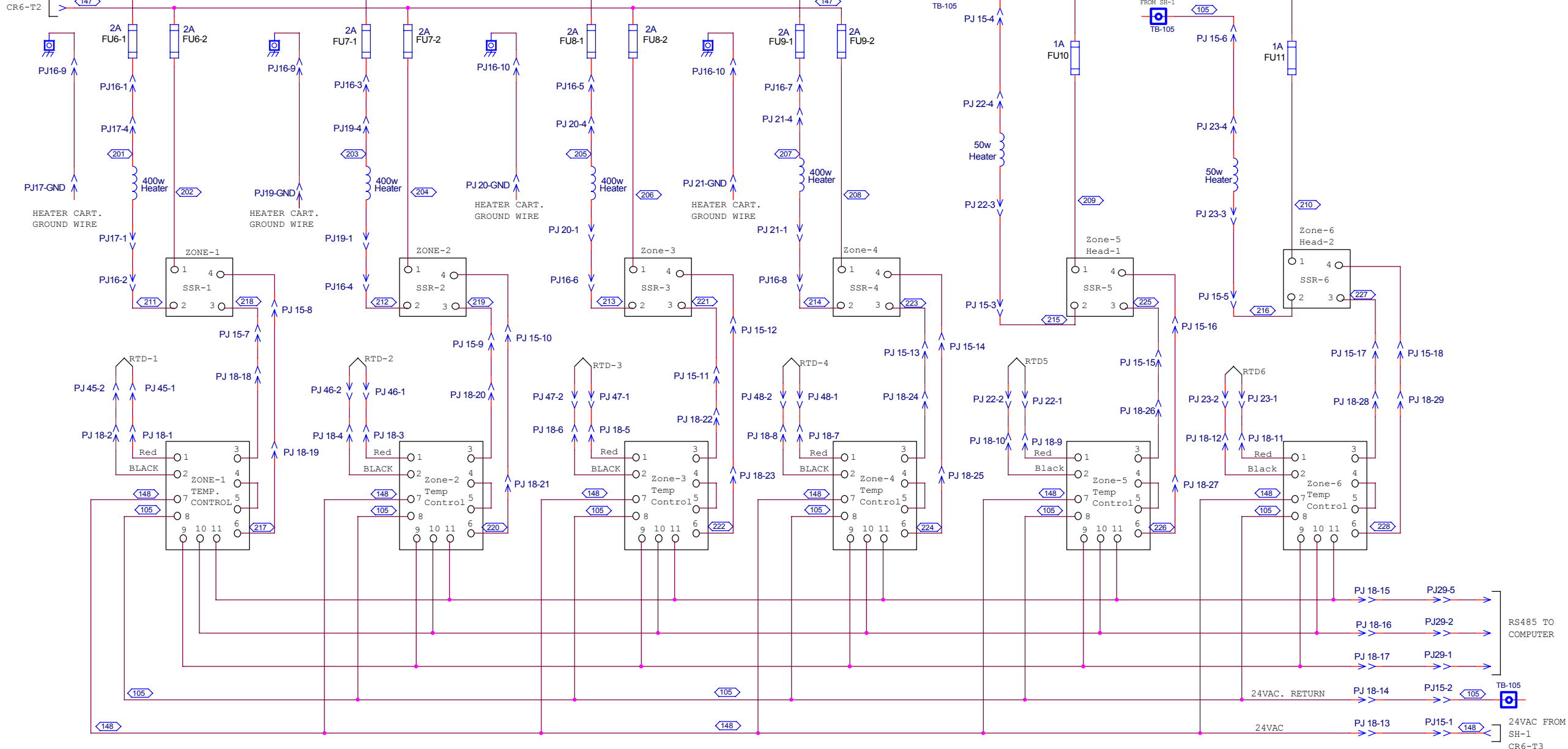
This drawing and the subject matter disclosed therein embody proprietary information which is the confidential property of Speedline Technologies, Inc. reproduced, published or used in whole or in part for any purpose without the express advance written permission of a duly authorized agent of Speedline Technologies, Inc.

208 SINGLE PHASE

FROM SH-1

CR6-T1

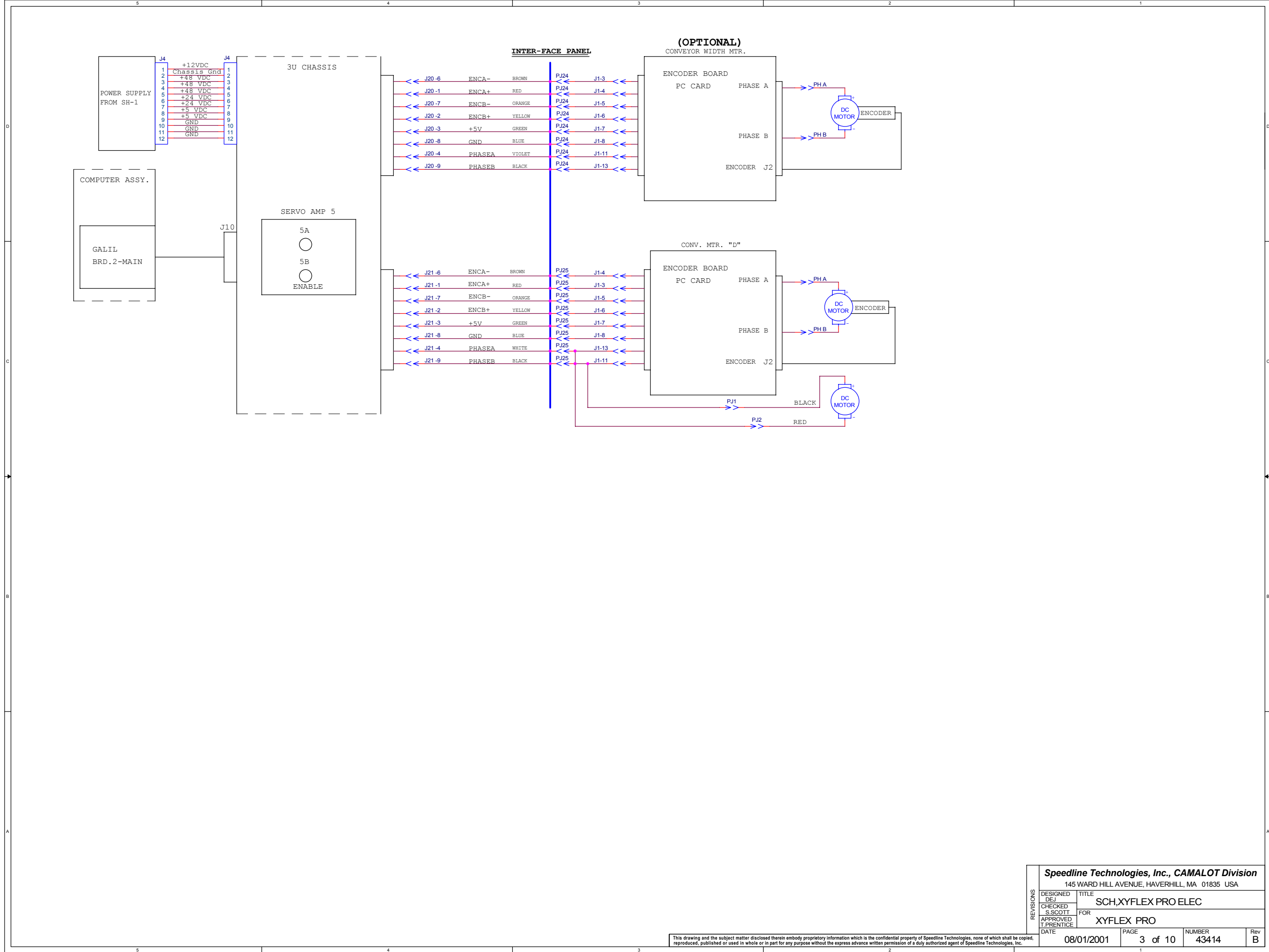
CR6-T2



NOTE:
HEAT IS OPTIONAL
 LAST WIRE NO. USED- 236

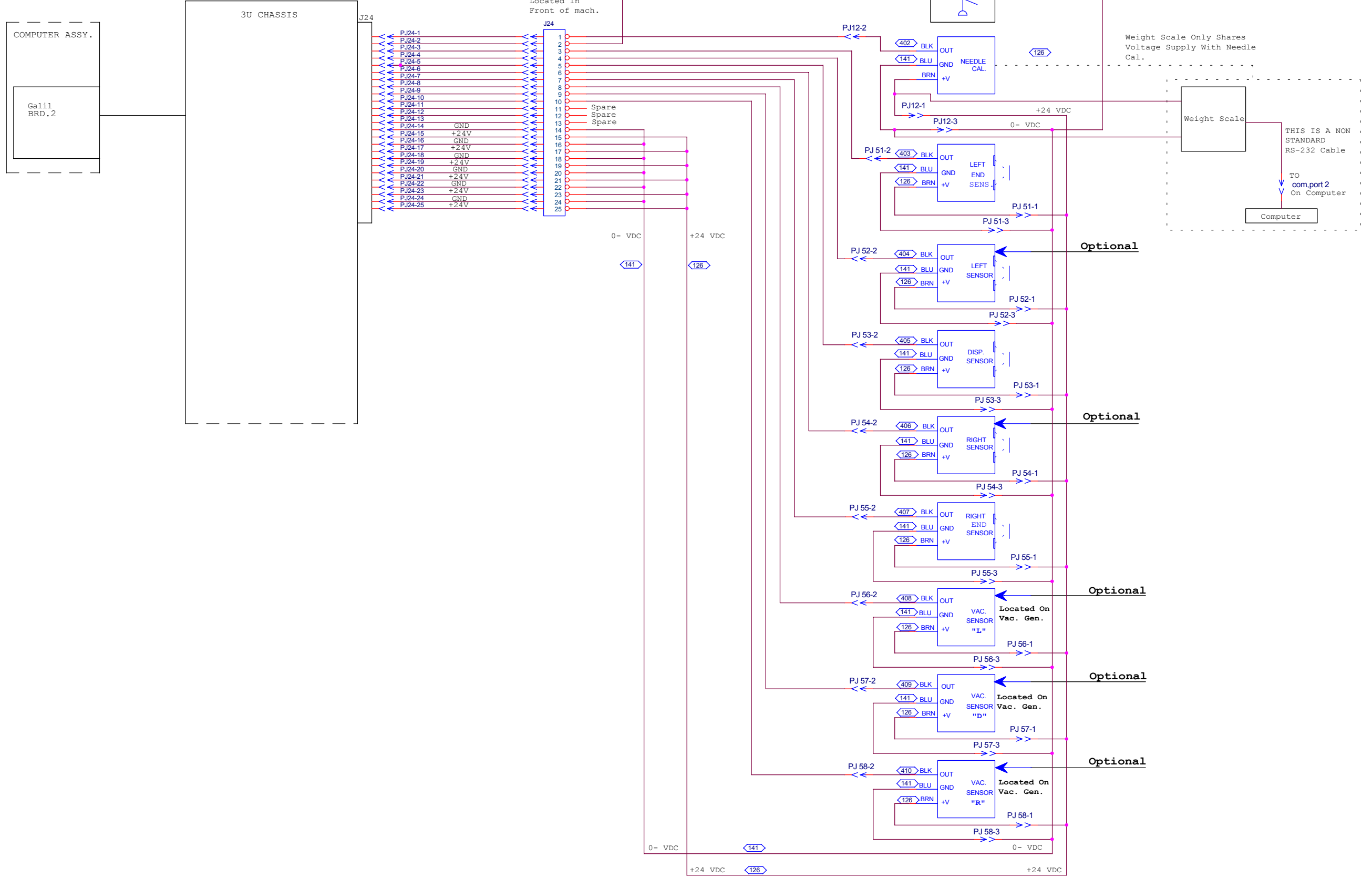
Speedline Technologies, Inc., CAMALOT Division 145 WARD HILL AVENUE, HAVERHILL, MA 01835 USA	
DESIGNED D.JOY	TITLE SCH.,XYFLEX PRO,ELEC.
CHECKED M.SCOTT	FOR XYFLEX-PRO
APPROVED T.PRENTICE	
DATE 08/01.2001	PAGE 2 of 10
NUMBER 43414	Rev B

This drawing and the subject matter disclosed therein embody proprietary information which is the confidential property of Speedline Technologies, Inc. reproduced, published or used in whole or in part for any purpose without the express advance written permission of a duly authorized agent of Speedline Technologies, Inc.



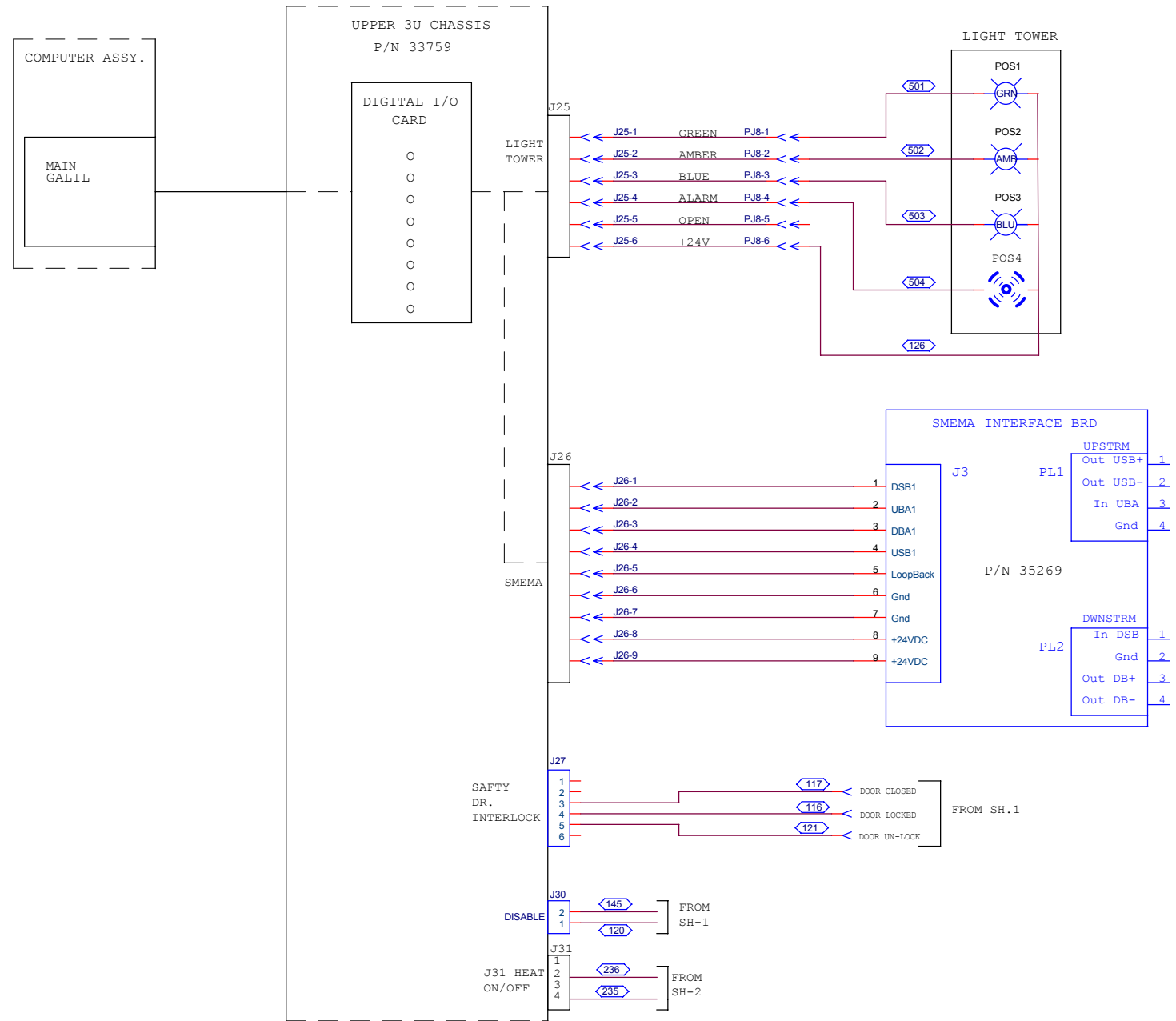
Speedline Technologies, Inc., CAMALOT Division				
145 WARD HILL AVENUE, HAVERHILL, MA 01835 USA				
DESIGNED DEJ	TITLE SCH,XYFLEX PRO ELEC			
CHECKED S.SCOTT	FOR XYFLEX PRO			
APPROVED T.PRENTICE	DATE 08/01/2001	PAGE 3 of 10	NUMBER 43414	Rev B

This drawing and the subject matter disclosed therein embody proprietary information which is the confidential property of Speedline Technologies, none of which shall be copied, reproduced, published or used in whole or in part for any purpose without the express advance written permission of a duly authorized agent of Speedline Technologies, Inc.



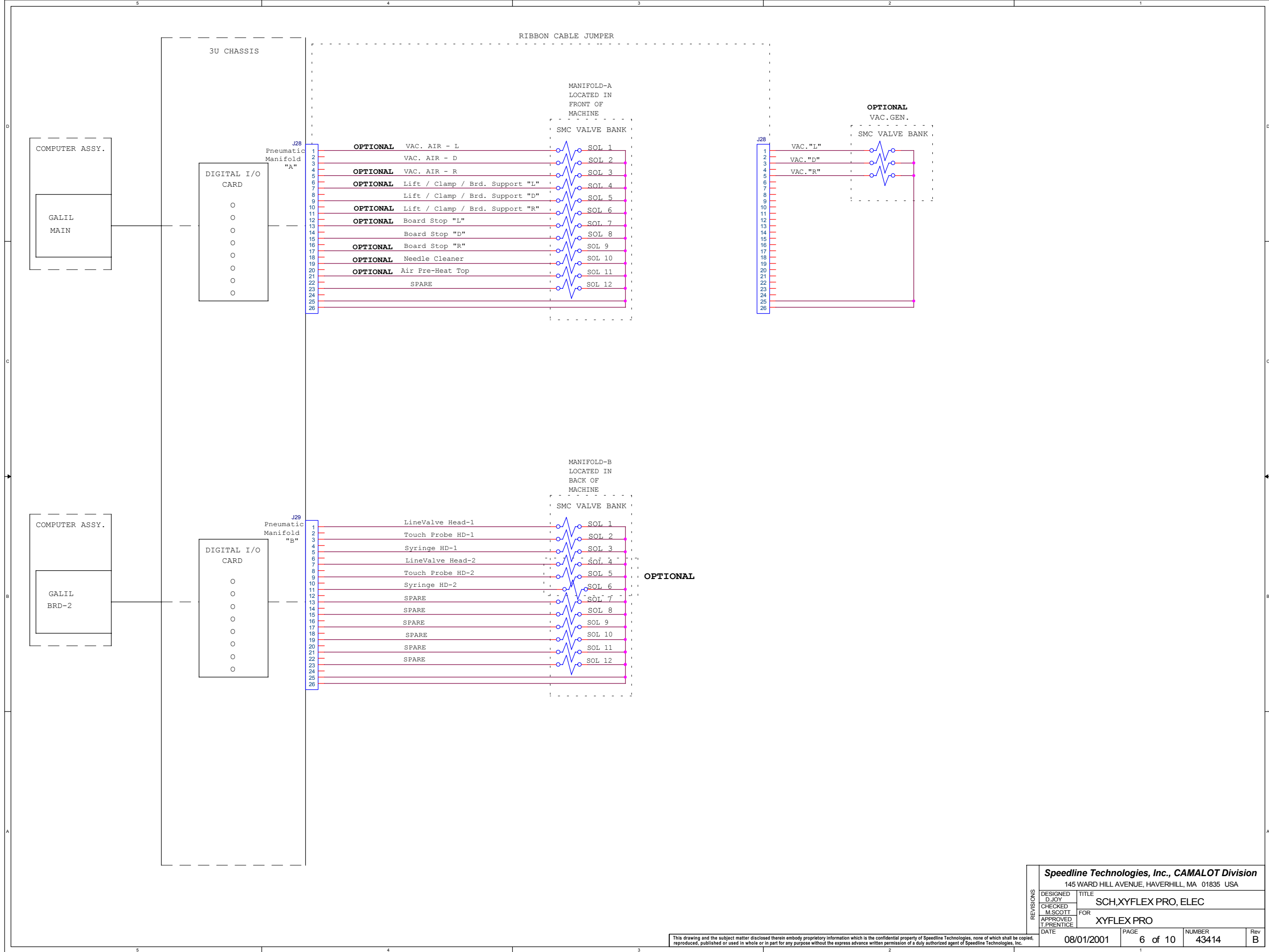
Speedline Technologies, Inc., CAMALOT Division			
145 WARD HILL AVENUE, HAVERHILL, MA 01835 USA			
DESIGNED D.JOY	TITLE SCH, XYFLEX PRO, ELEC		
CHECKED M.SCOTT	FOR XYFLEX PRO		
APPROVED T.PRENTICE			
DATE 08/01/2001	PAGE 4 of 10	NUMBER 43414	Rev B

This drawing and the subject matter disclosed therein embody proprietary information which is the confidential property of Speedline Technologies, none of which shall be copied, reproduced, published or used in whole or in part for any purpose without the express advance written permission of a duly authorized agent of Speedline Technologies, Inc.



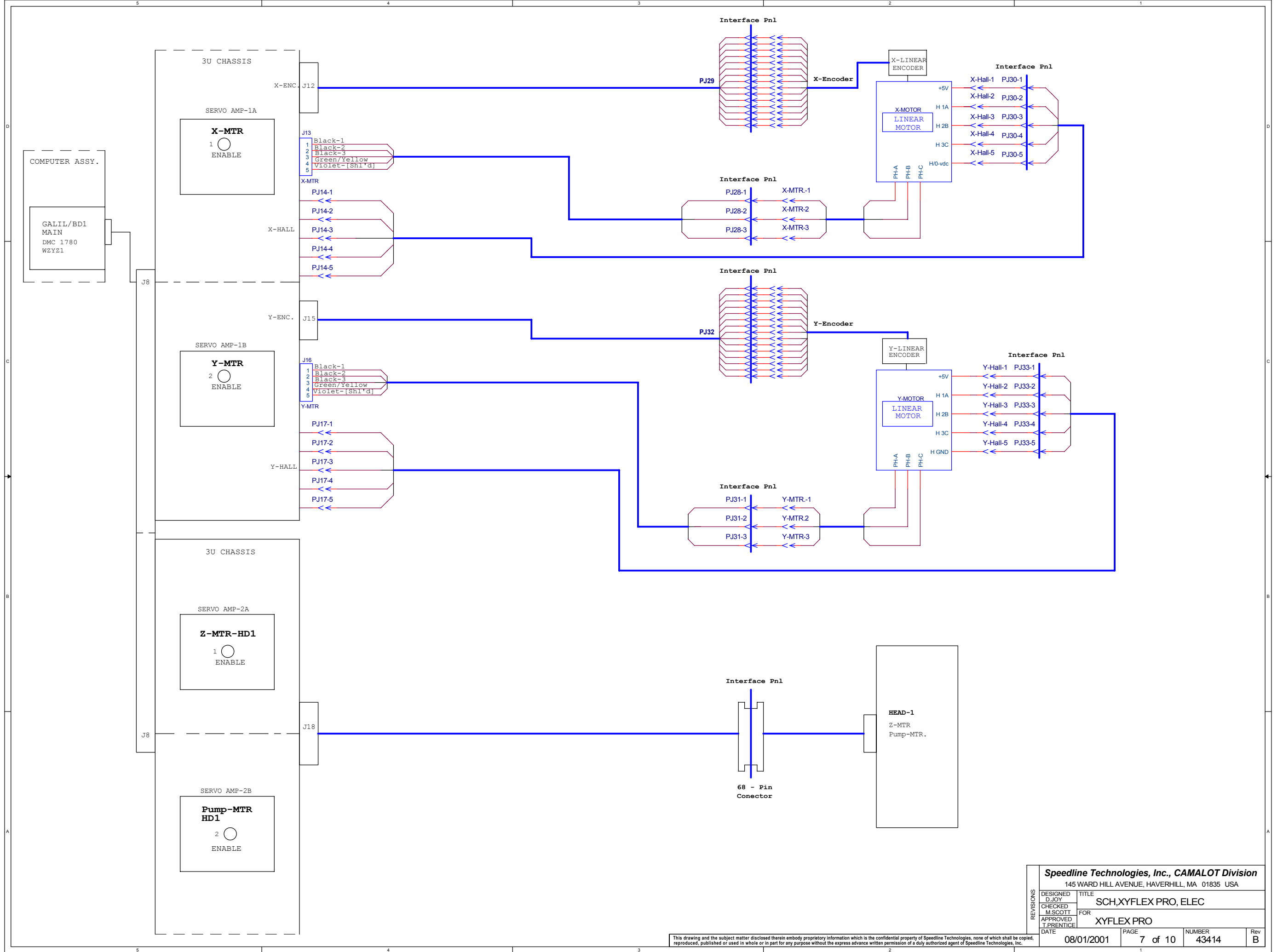
Speedline Technologies, Inc., CAMALOT Division			
145 WARD HILL AVENUE, HAVERHILL, MA 01835 USA			
DESIGNED D.JOY	TITLE SCH, XYFLEX PRO, ELEC		
CHECKED M.SCOTT	FOR XYFLEX PRO		
APPROVED T.PRENTICE			
DATE 08/01/2001	PAGE 5 of 10	NUMBER 43414	Rev B

This drawing and the subject matter disclosed therein embody proprietary information which is the confidential property of Speedline Technologies, none of which shall be copied, reproduced, published or used in whole or in part for any purpose without the express advance written permission of a duly authorized agent of Speedline Technologies, Inc.



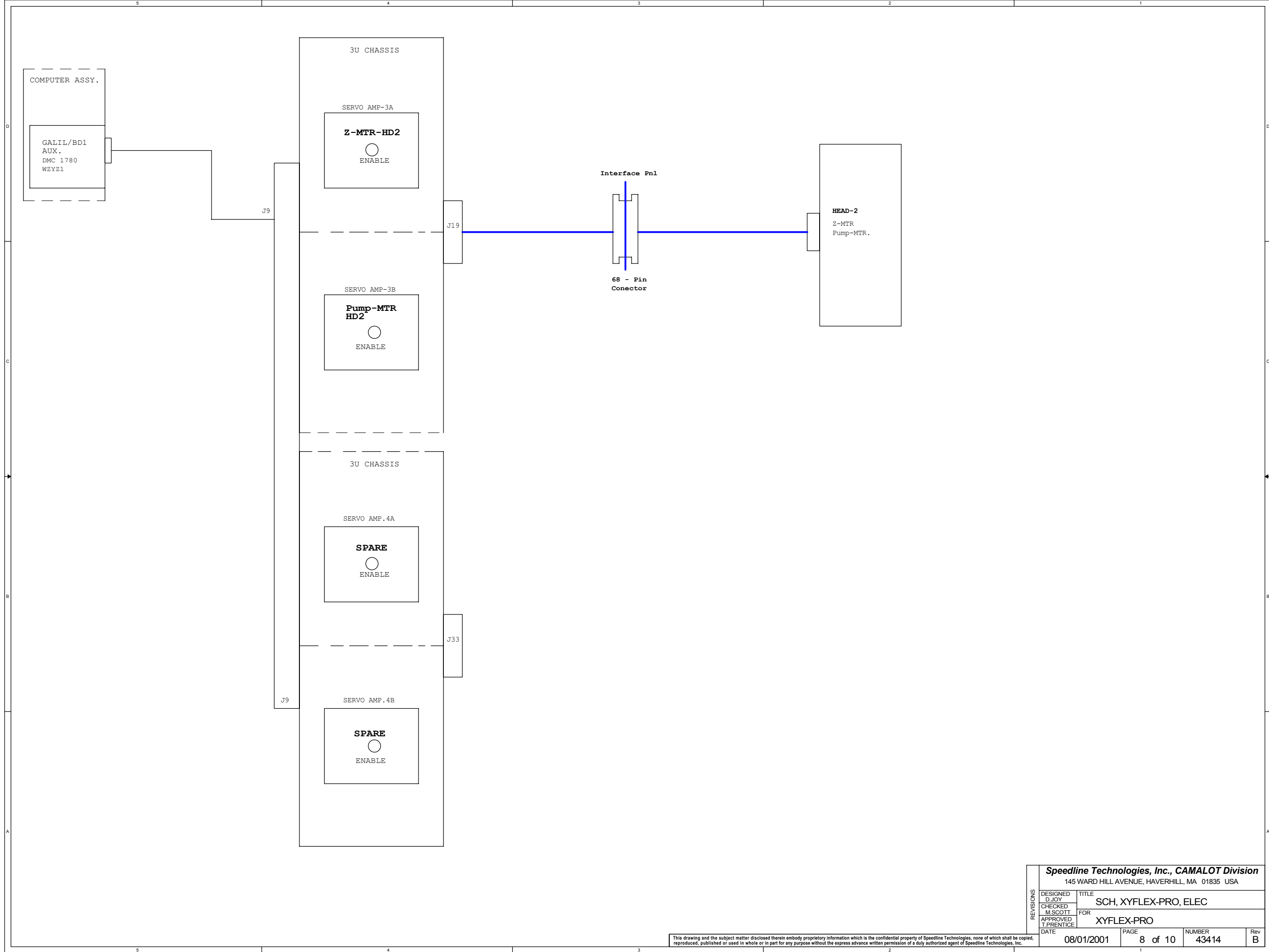
This drawing and the subject matter disclosed therein embody proprietary information which is the confidential property of Speedline Technologies, Inc. reproduced, published or used in whole or in part for any purpose without the express advance written permission of a duly authorized agent of Speedline Technologies, Inc.

Speedline Technologies, Inc., CAMALOT Division			
145 WARD HILL AVENUE, HAVERHILL, MA 01835 USA			
DESIGNED D. JOY	TITLE SCH,XYFLEX PRO, ELEC		
CHECKED M. SCOTT	FOR XYFLEX PRO		
APPROVED T. PRENTICE			
DATE 08/01/2001	PAGE 6 of 10	NUMBER 43414	Rev B



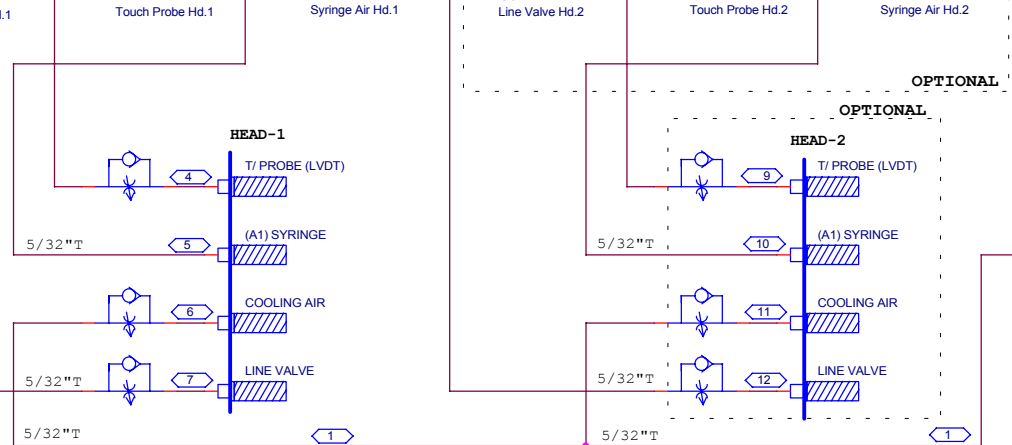
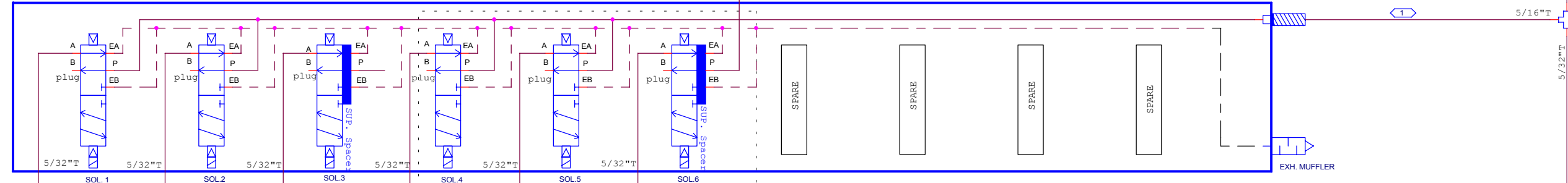
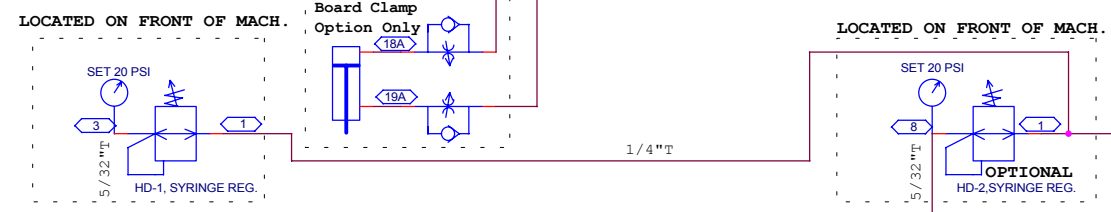
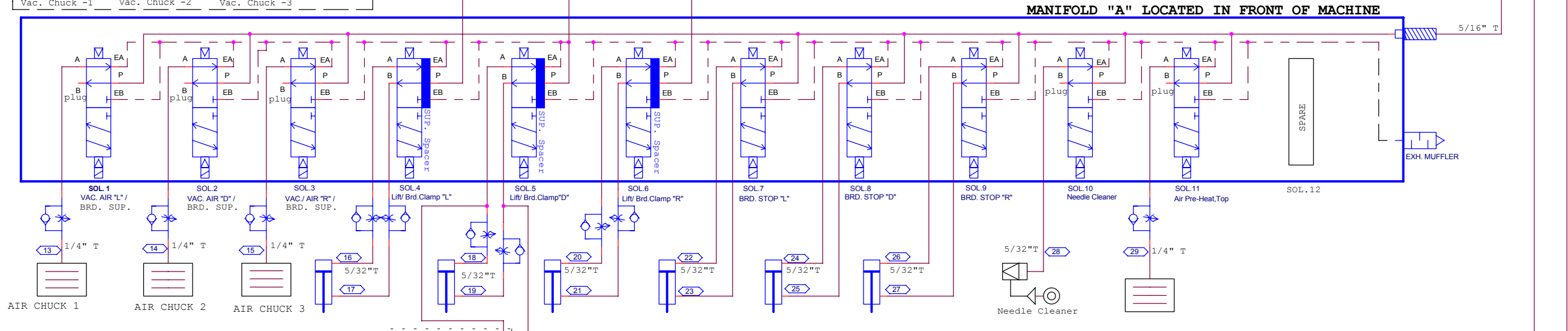
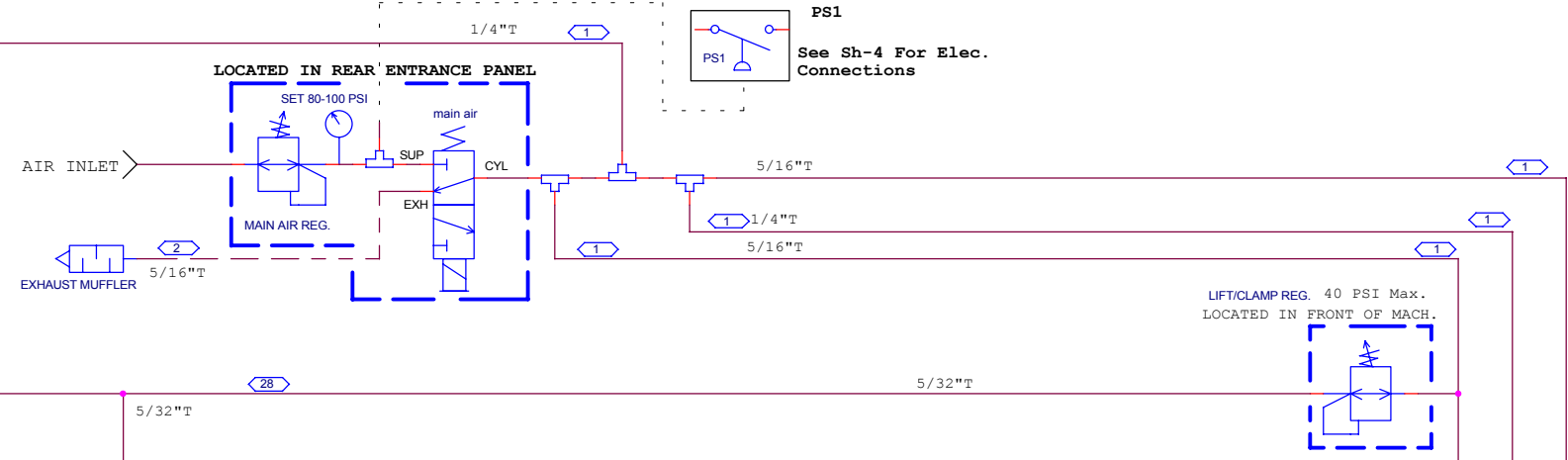
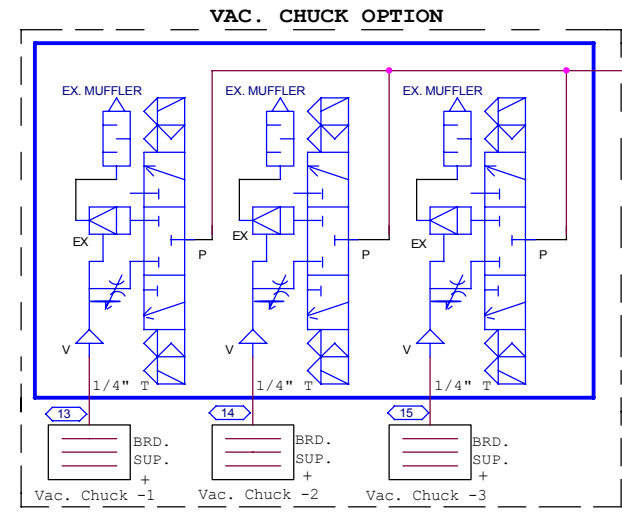
This drawing and the subject matter disclosed therein embody proprietary information which is the confidential property of Speedline Technologies, none of which shall be copied, reproduced, published or used in whole or in part for any purpose without the express advance written permission of a duly authorized agent of Speedline Technologies, Inc.

Speedline Technologies, Inc., CAMALOT Division			
145 WARD HILL AVENUE, HAVERHILL, MA 01835 USA			
DESIGNED D.JOY	TITLE SCH,XYFLEX PRO, ELEC		
CHECKED M.SCOTT	FOR XYFLEX PRO		
APPROVED T.PRENTICE	DATE 08/01/2001	PAGE 7 of 10	NUMBER 43414
		Rev B	



Speedline Technologies, Inc., CAMALOT Division 145 WARD HILL AVENUE, HAVERHILL, MA 01835 USA				
REVISIONS	DESIGNED	D.JOY	TITLE	SCH, XYFLEX-PRO, ELEC
	CHECKED	M.SCOTT	FOR	XYFLEX-PRO
	APPROVED	T.PRENTICE		
	DATE	08/01/2001	PAGE	8 of 10
		NUMBER	43414	Rev
				B

This drawing and the subject matter disclosed therein embody proprietary information which is the confidential property of Speedline Technologies, none of which shall be copied, reproduced, published or used in whole or in part for any purpose without the express advance written permission of a duly authorized agent of Speedline Technologies, Inc.

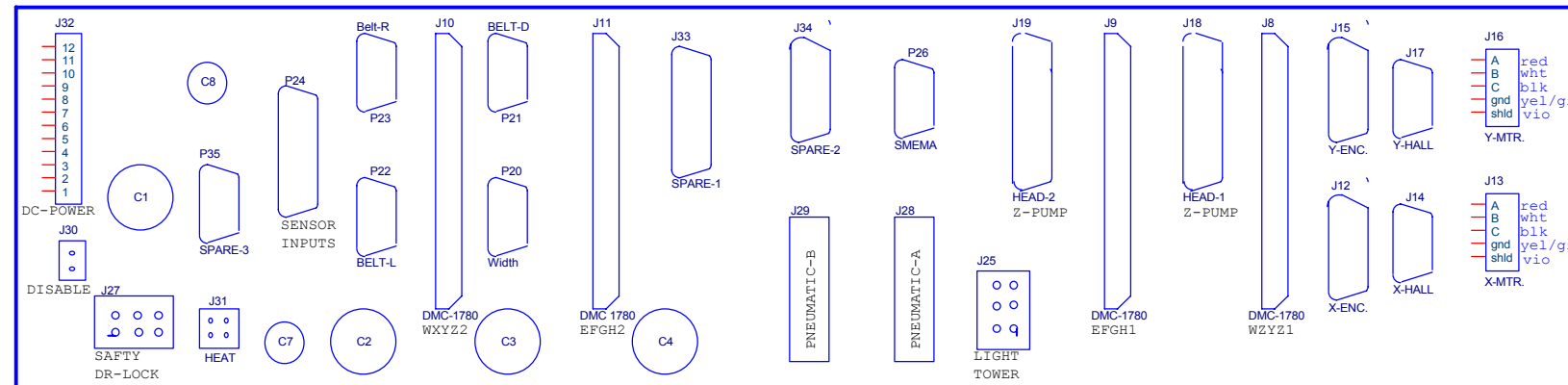


NOTE:1
LAST NO. USED - 29

Speedline Technologies, Inc., CAMALOT Division 145 WARD HILL AVENUE, HAVERHILL, MA 01835 USA			
DESIGNED D.JOY	TITLE SCH, XYFLEX-PRO,PNEUMATICS		
CHECKED M.SCOTT	FOR		
APPROVED T.PRENTICE	XYFLEX PRO		
DATE 08/01/2001	PAGE 9 of 10	NUMBER 43414	Rev B

This drawing and the subject matter disclosed therein embody proprietary information which is the confidential property of Speedline Technologies, Inc. reproduced, published or used in whole or in part for any purpose without the express advance written permission of a duly authorized agent of Speedline Technologies, Inc.

CONNECTOR CONFIGURATION FOR "NEW" 3U-BACKPLANE (REAR VIEW)



AMP/I/O CONFIGURATION (FRONT VIEW)

Amp . 1A ○	Amp . 2A ○	Amp . 3A ○		Amp . 4A ○	Amp . 5A ○	Amp . 6A ○		
Amp . 1B ○	Amp . 2B ○	Amp . 3B ○		Amp . 4B ○	Amp . 5B ○	Amp . 6B ○		
			○ ○ ○ I/O ○					
X-MTR	Z-MTR-HD1	Z-MTR-HD2		SPARE	WIDTH MTR	SPARE		
Y-MTR	Pump-MTR HD-1	Pump-MTR HD-2		SPARE	DISP. MTR	SPARE	BLANK	BLANK
SLOT-J1	SLOT-J2	SLOT-J3	SLOT-J4	SLOT-J5	SLOT-J6	SLOT-J7		

Speedline Technologies, Inc., CAMALOT Division 145 WARD HILL AVENUE, HAVERHILL, MA 01835 USA			
DESIGNED D.JOY	CHECKED M.SCOTT	TITLED SCH, XYFLEX-PRO BACKPLANE	
APPROVED T.PRENTICE		FOR XYFLEX-PRO	
DATE 08/01/2001	PAGE 10 of 10	NUMBER 43414	Rev B

This drawing and the subject matter disclosed therein embody proprietary information which is the confidential property of Speedline Technologies, none of which shall be copied, reproduced, published or used in whole or in part for any purpose without the express advance written permission of a duly authorized agent of Speedline Technologies, Inc.