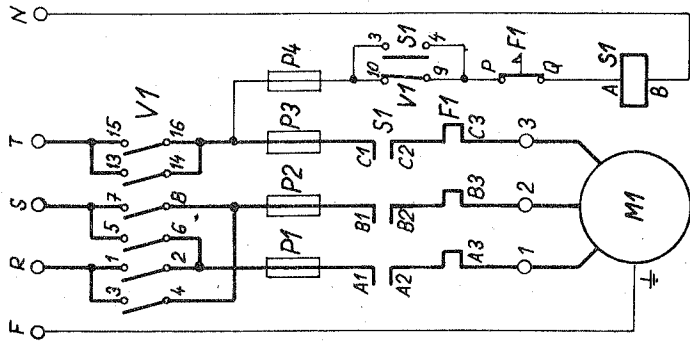
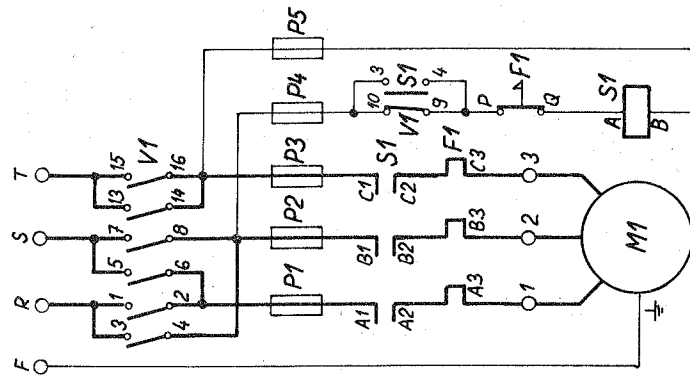


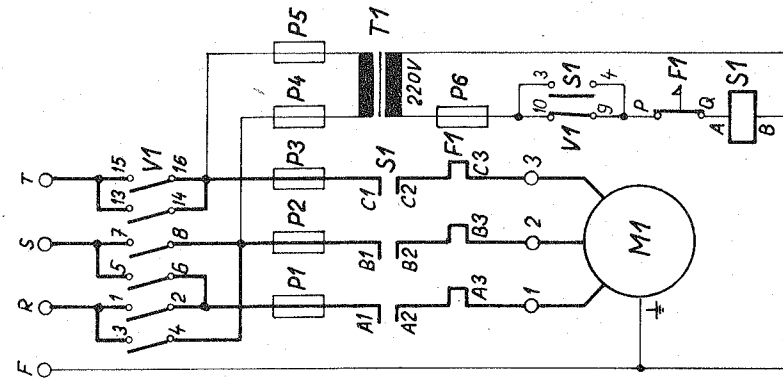
3 × 380V · 0



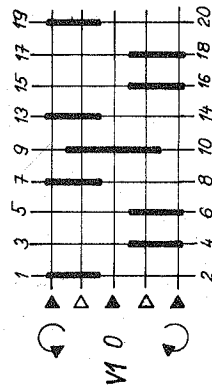
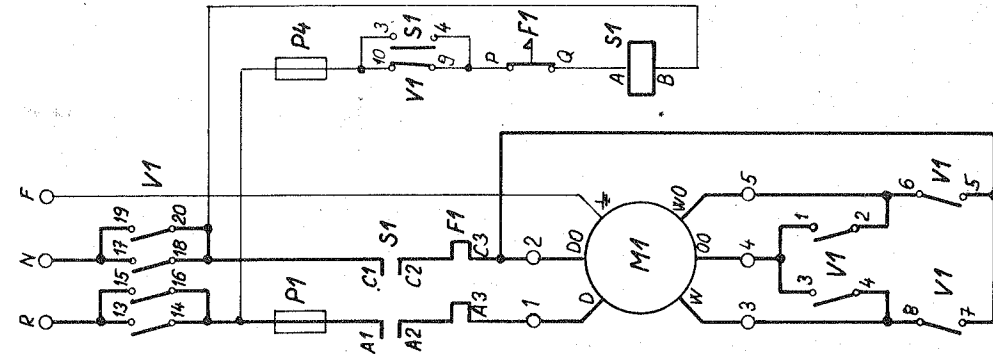
3 × 220V



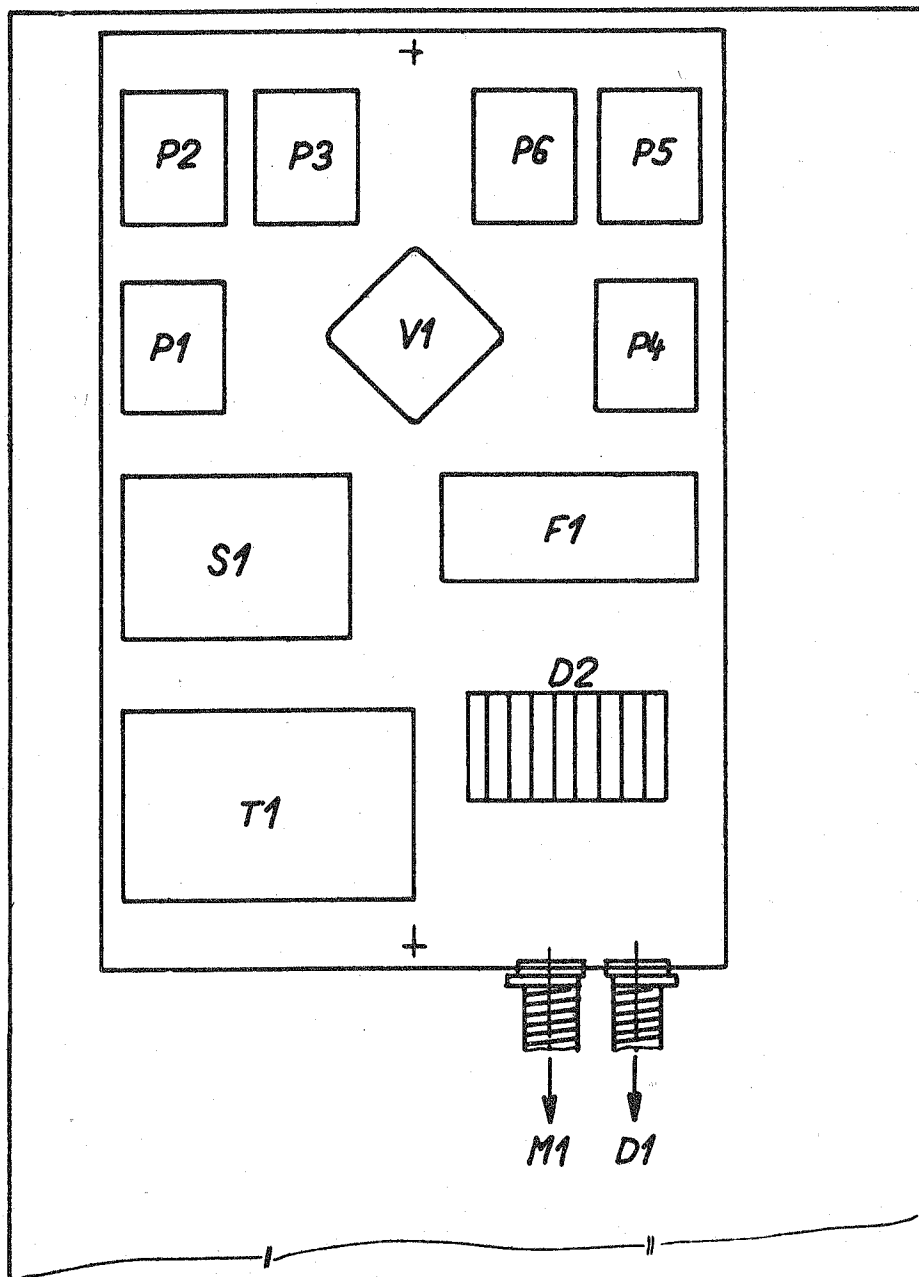
3 × 380 - 500V

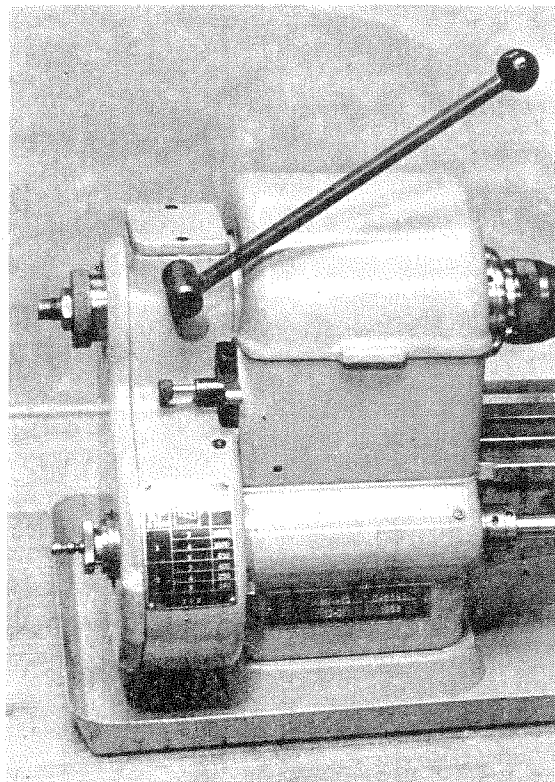
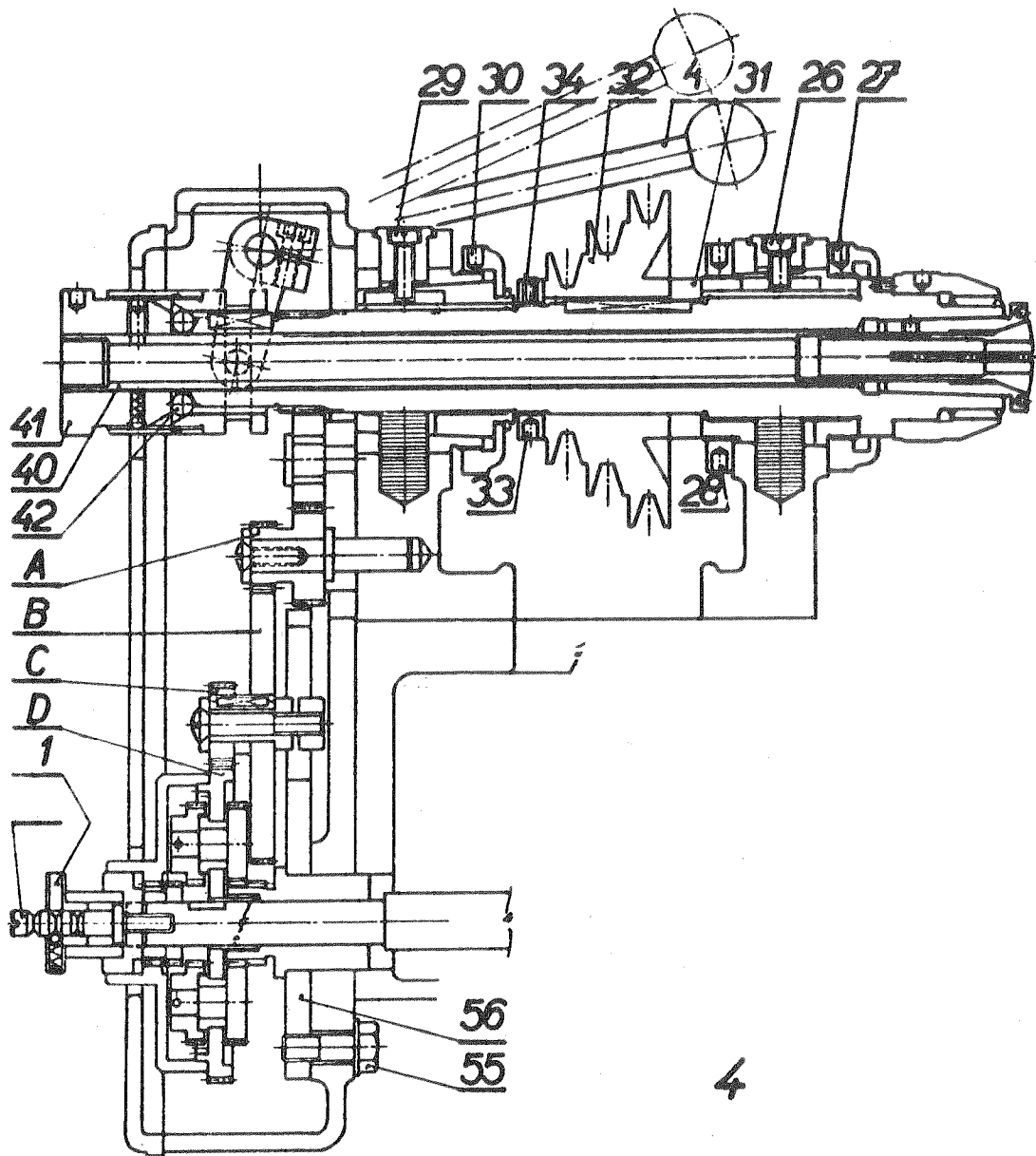


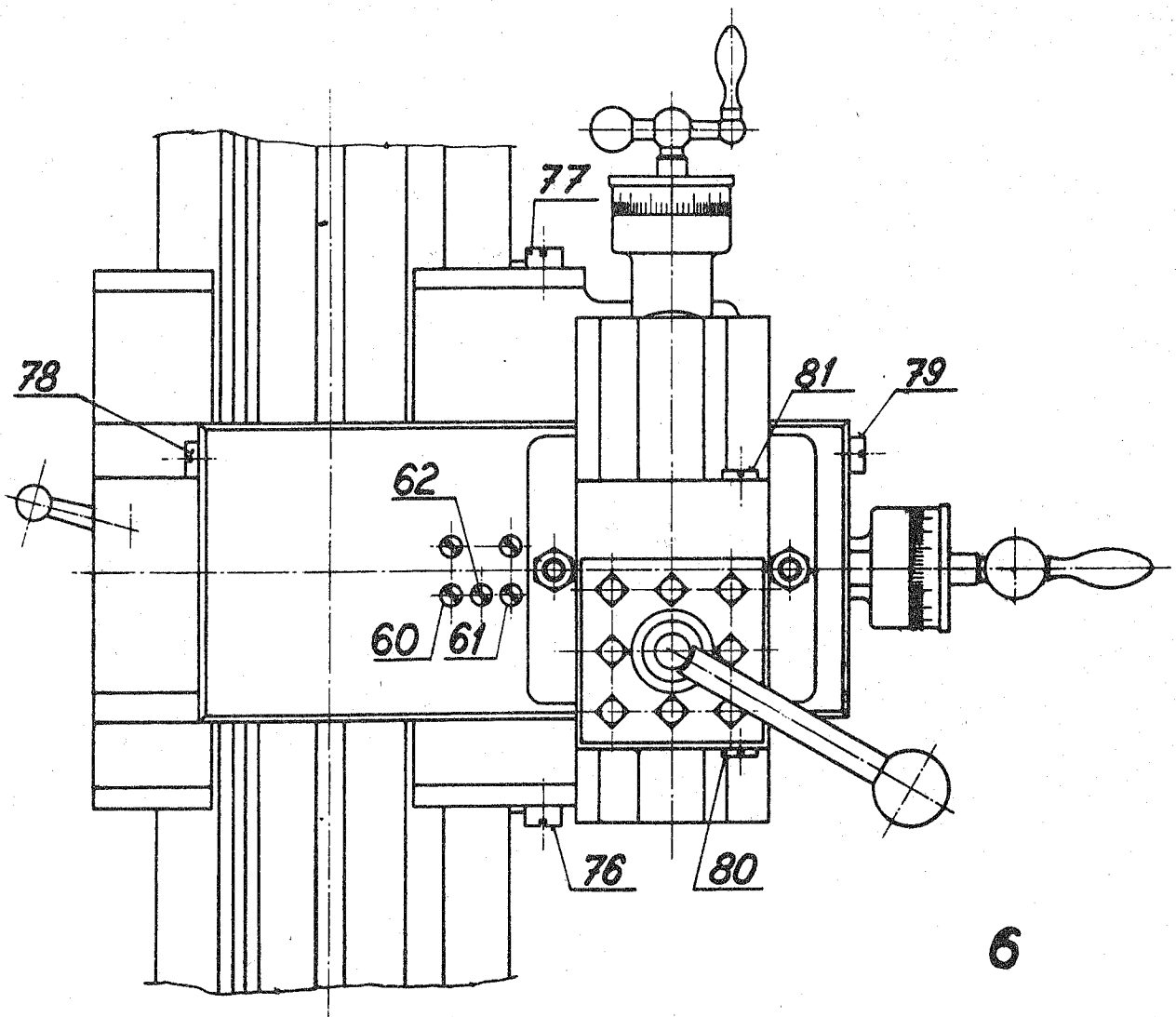
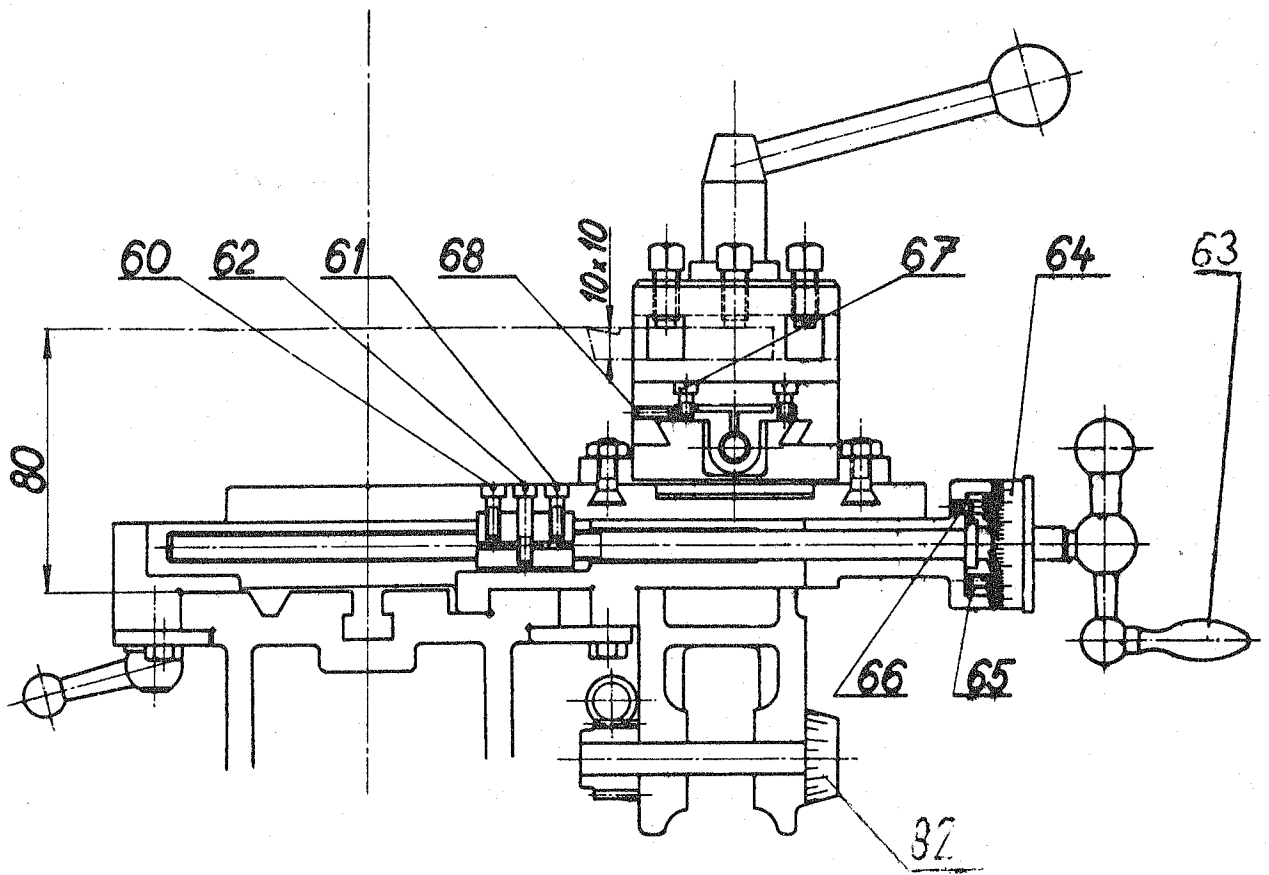
1 × 220V

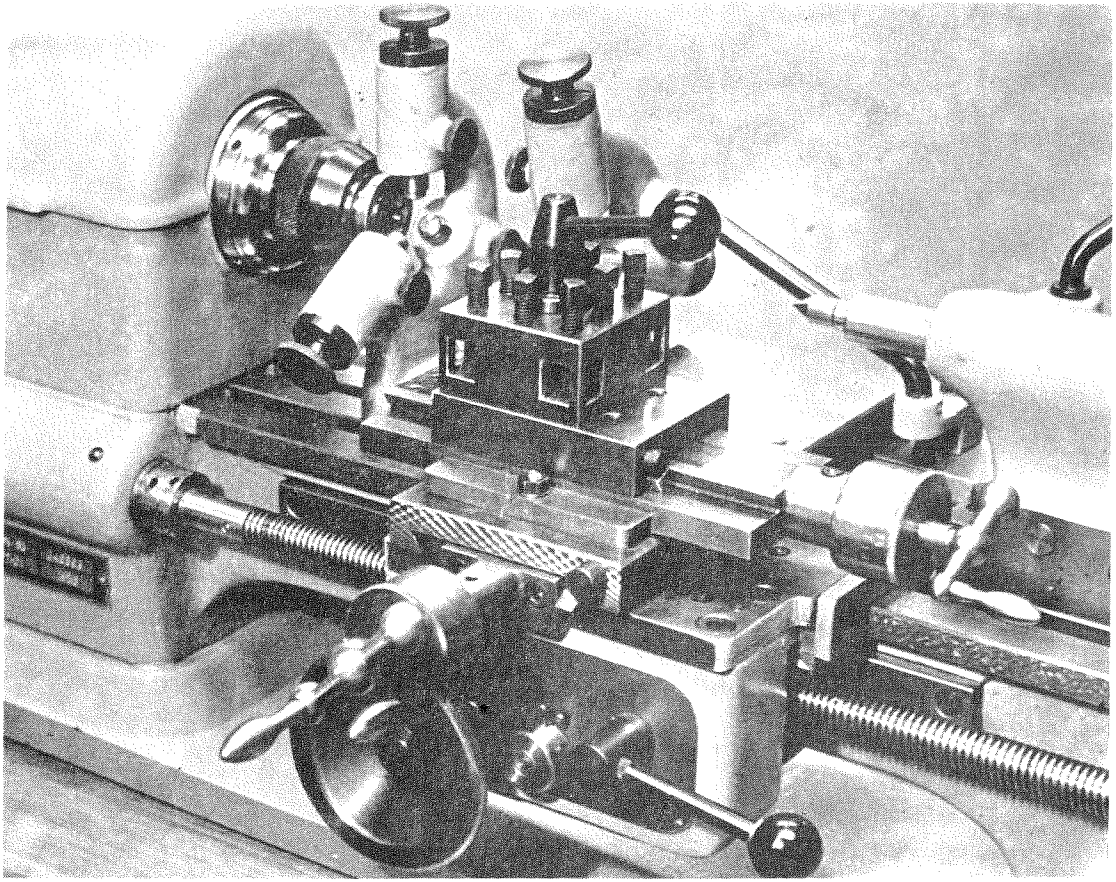


	P1	P2	P3	P4	P5	P6	F1
3 × 220V/50Hz	4AT	4AT	4AT	4A	4A	—	23A
3 × 220V/60Hz	6AT	6AT	6AT	4A	4A	—	23A
3 × 380 - 500V	4AT	4AT	4AT	4A	4A	4A	1A
1 × 220V	10AT	—	—	4A	—	—	34A

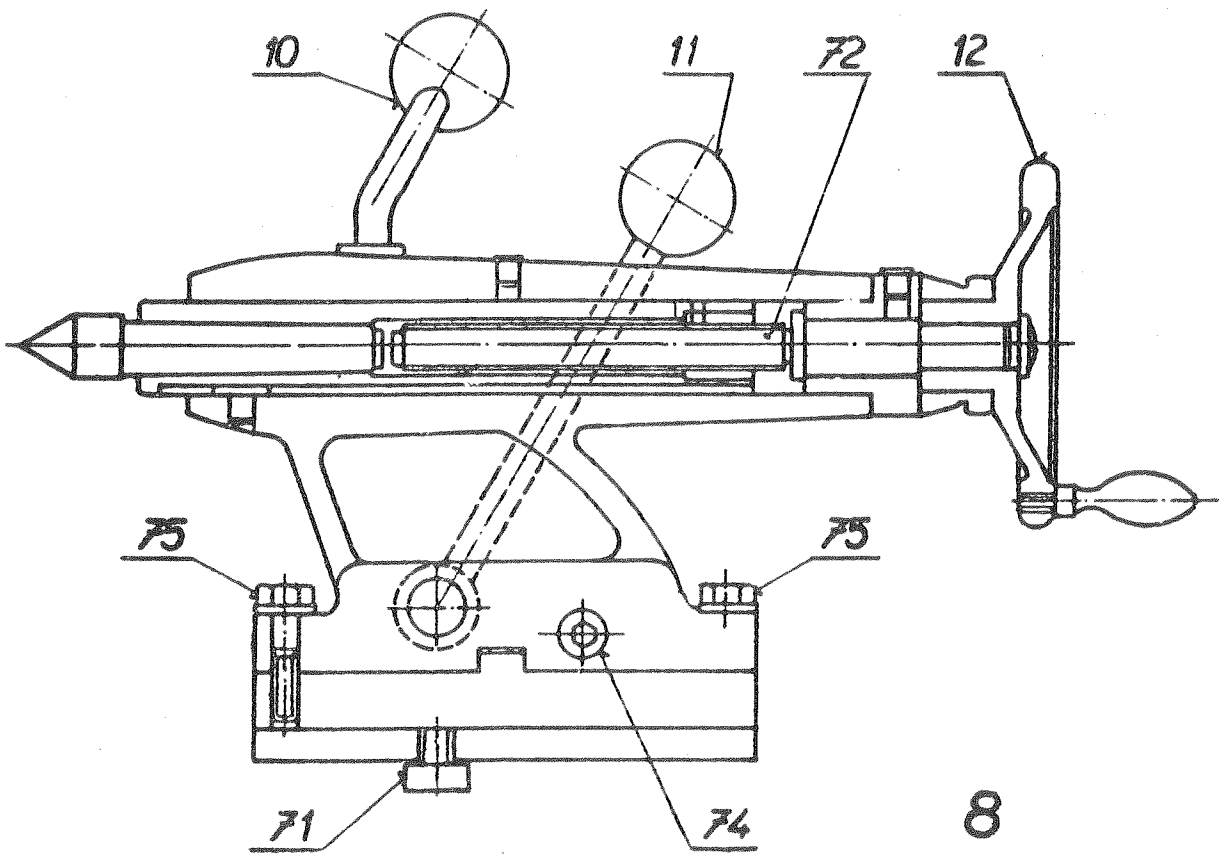




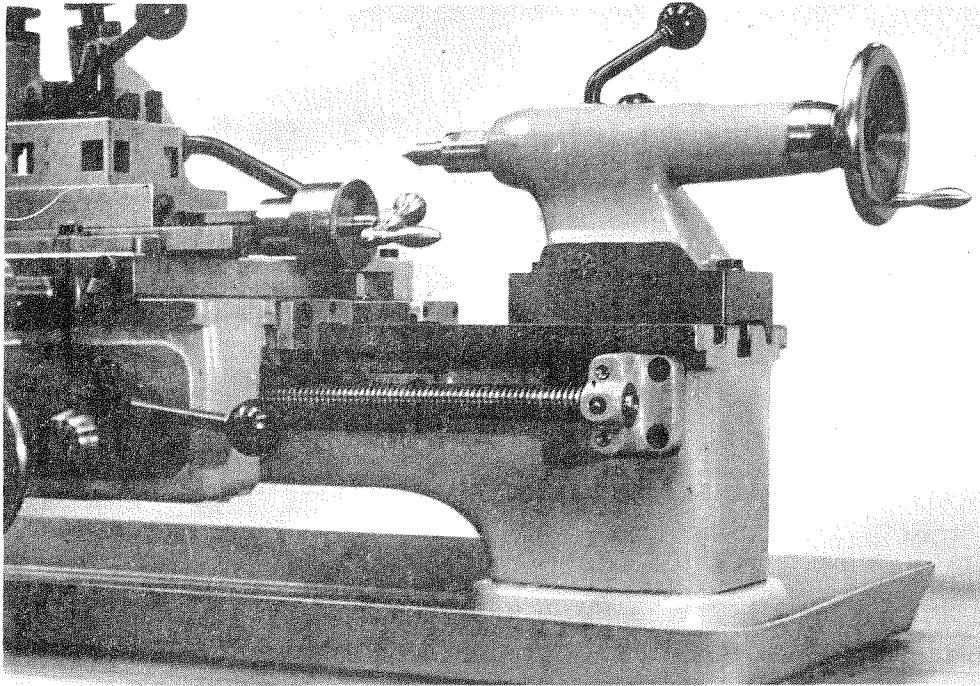




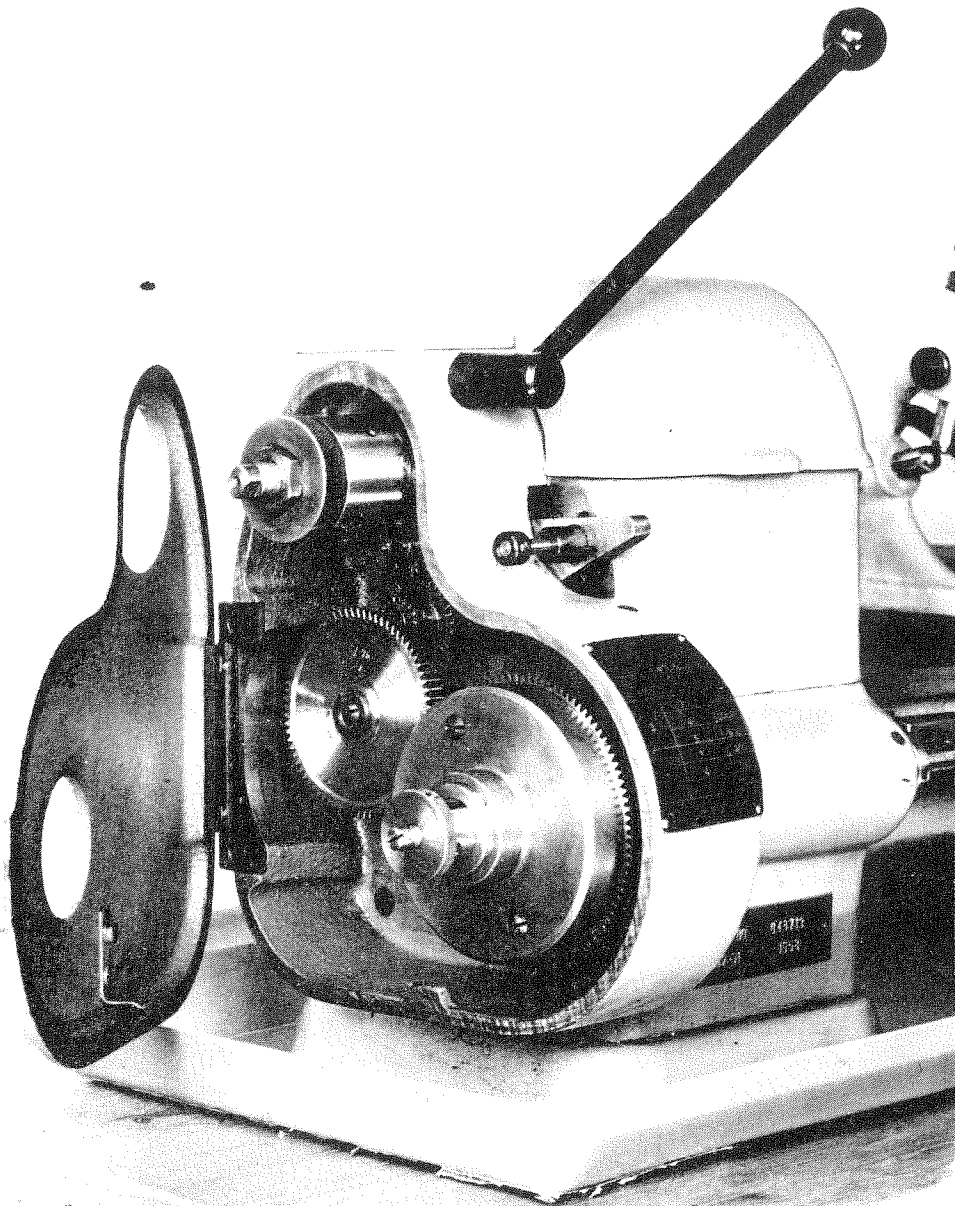
7



8

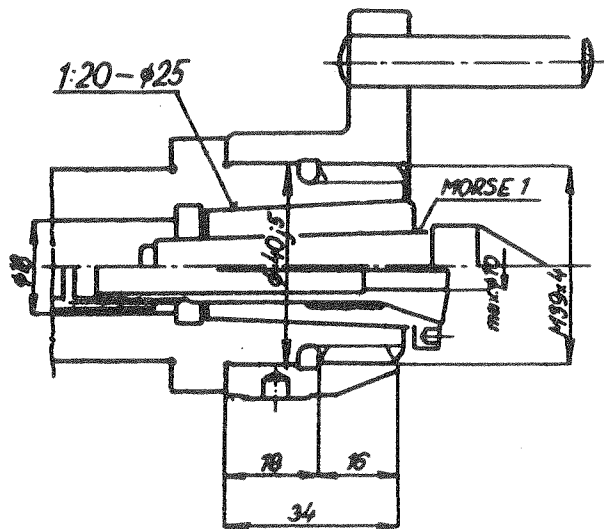
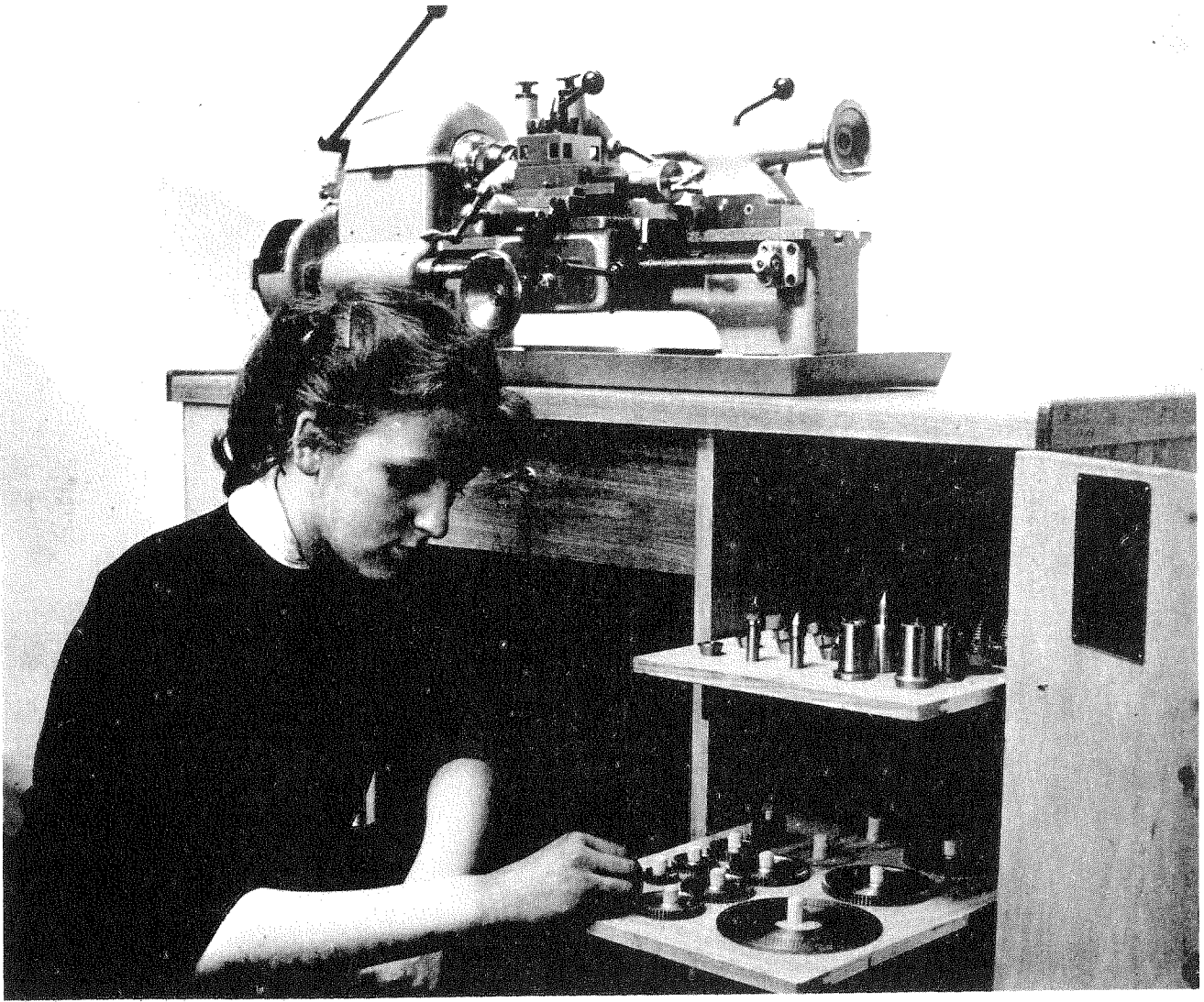


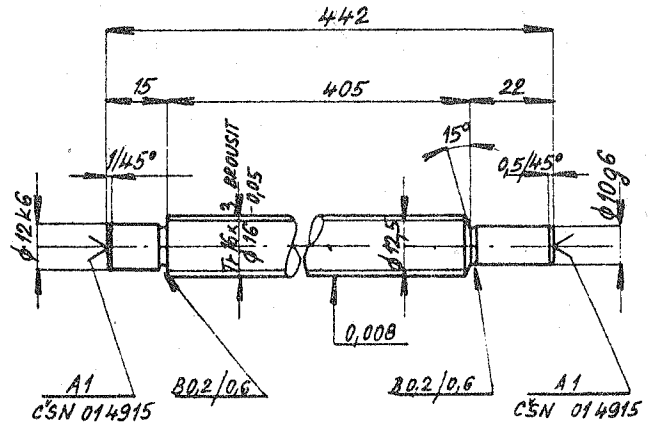
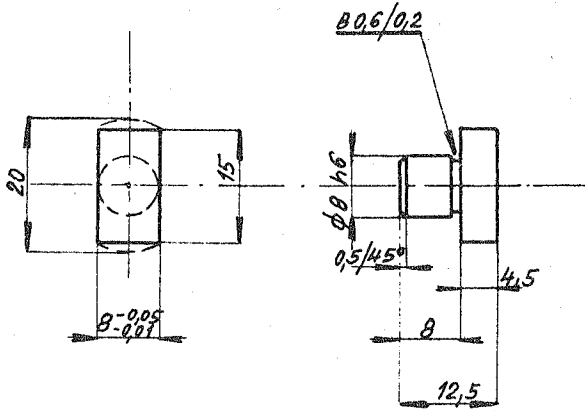
9



10

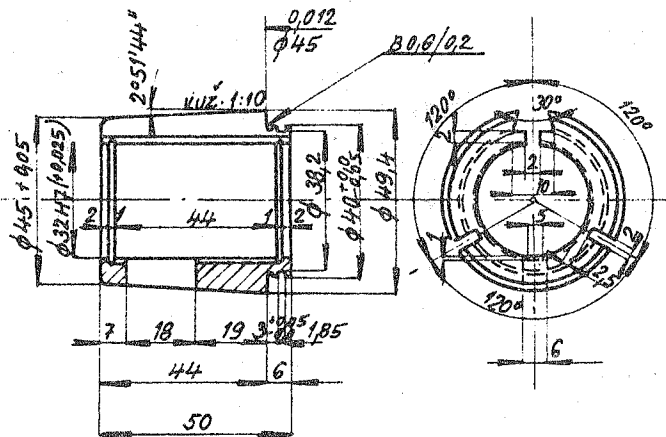
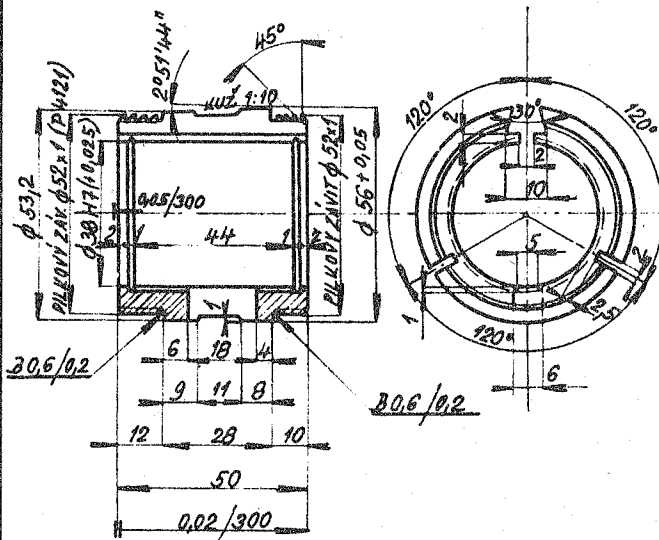






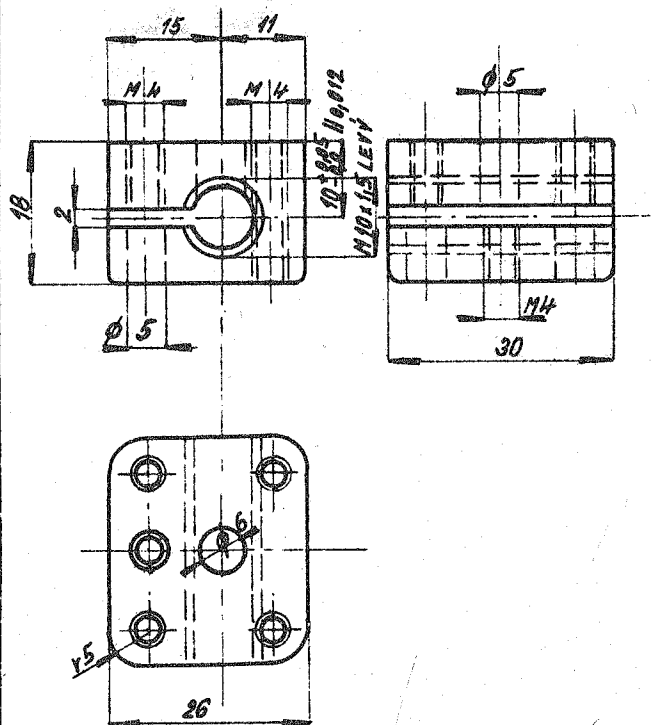
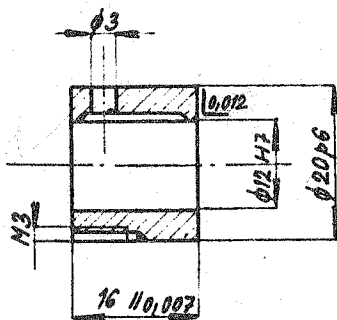
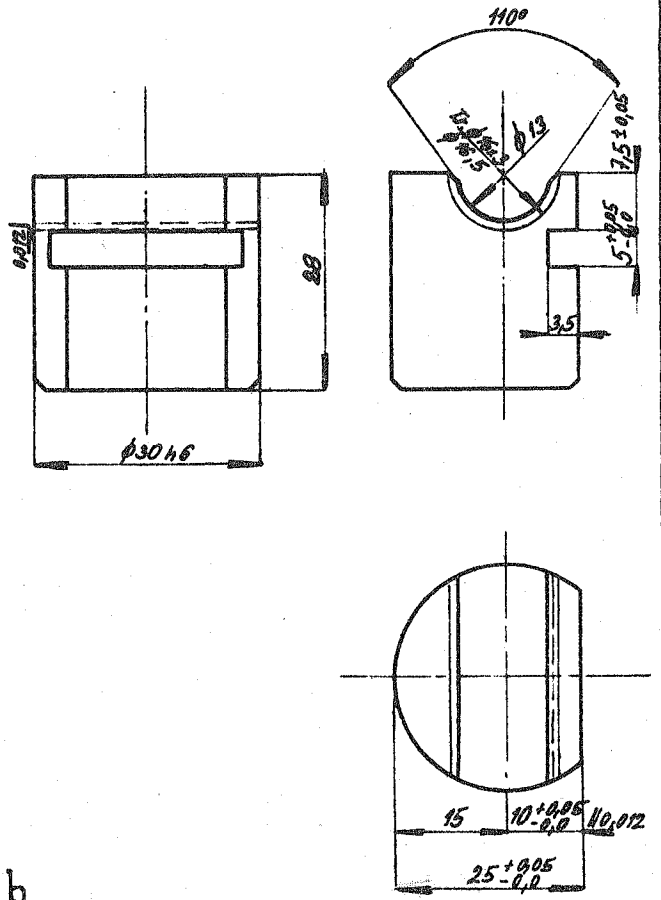
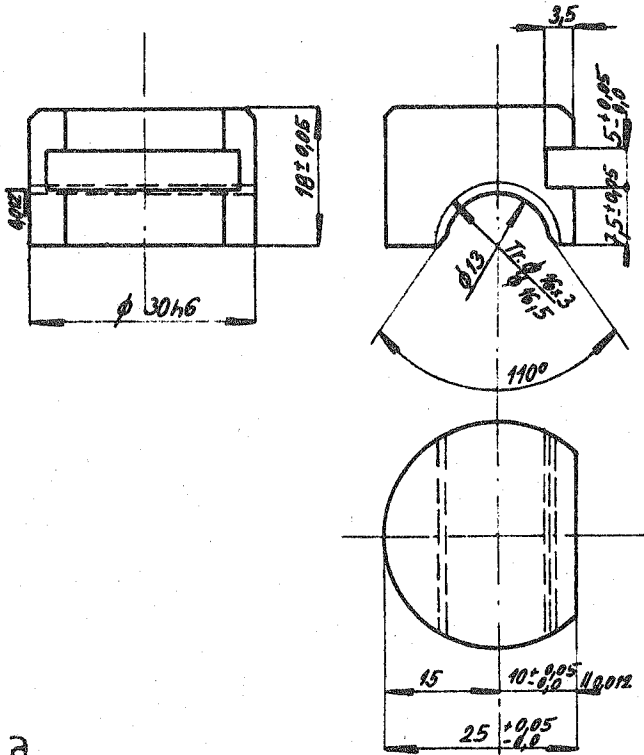
a

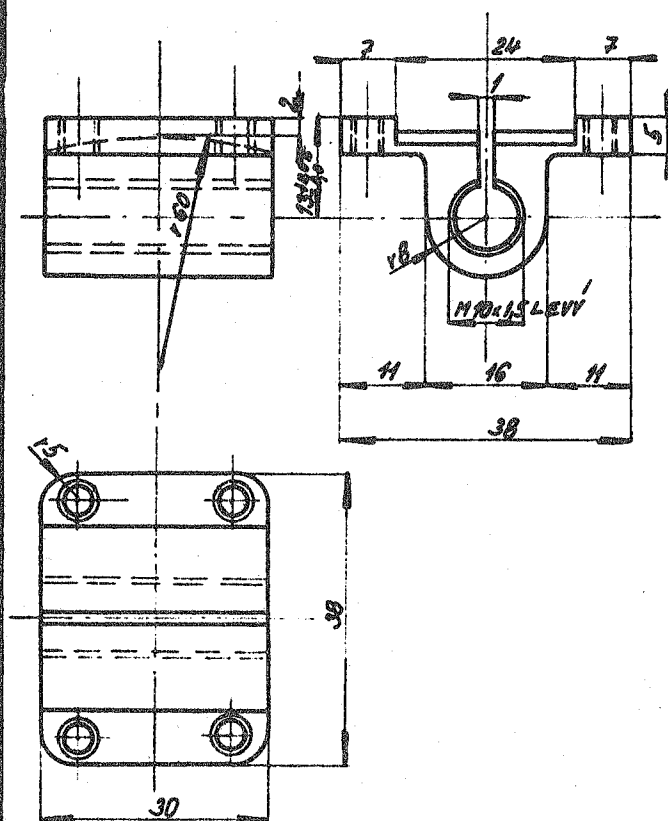
b



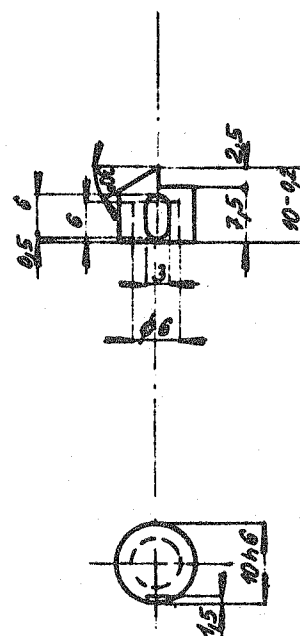
c

d

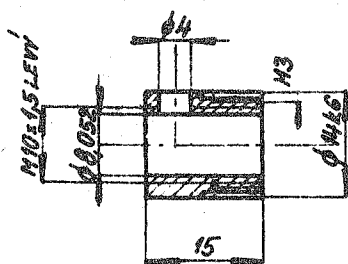




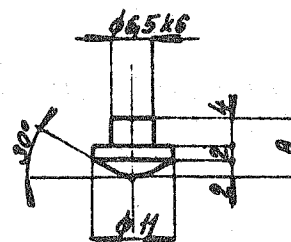
a



b

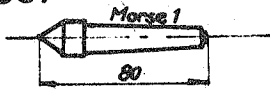


c

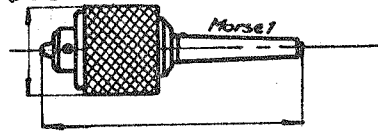


d

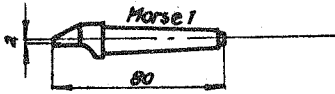
Mn 801



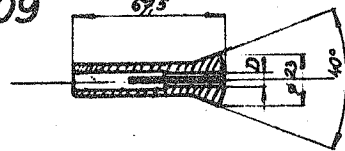
Mn 808



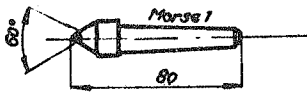
Mn 802



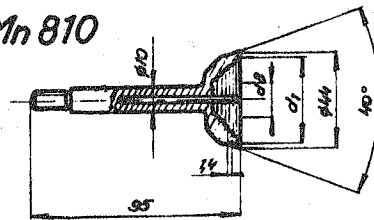
Mn 809



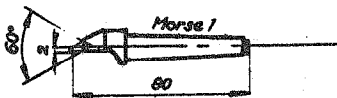
Mn 803



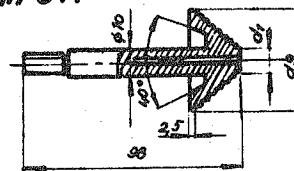
Mn 810



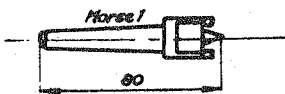
Mn 804



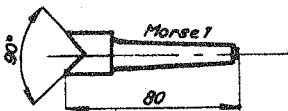
Mn 811



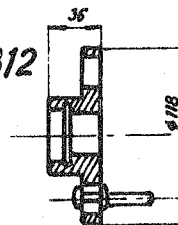
Mn 805



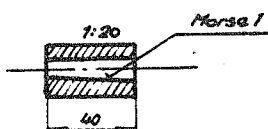
Mn 806



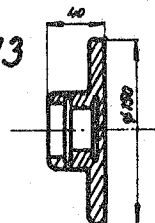
Mn 812



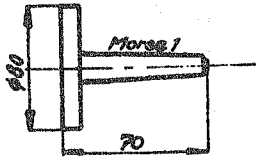
Mn 807



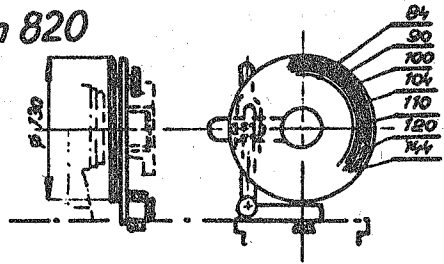
Mn 813



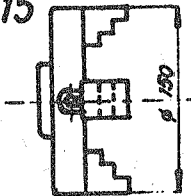
Mn 814



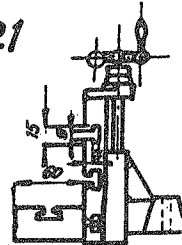
Mn 820



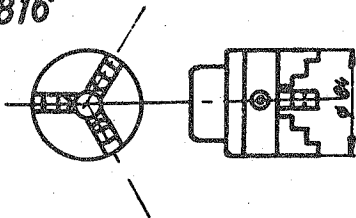
Mn 815



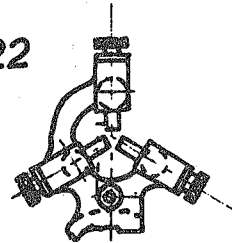
Mn 821



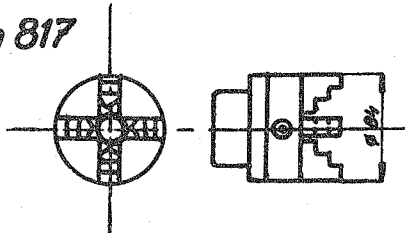
Mn 816



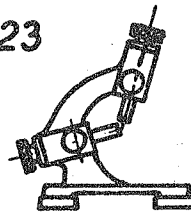
Mn 822



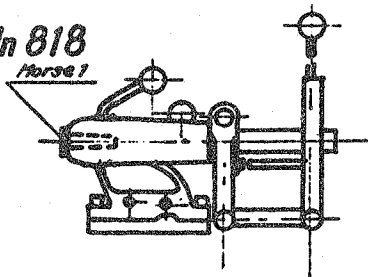
Mn 817



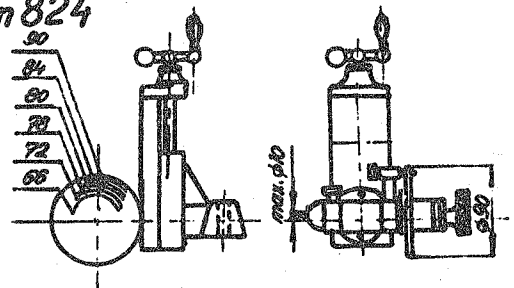
Mn 823



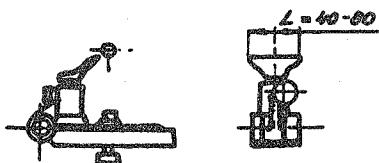
Mn 818



Mn 824



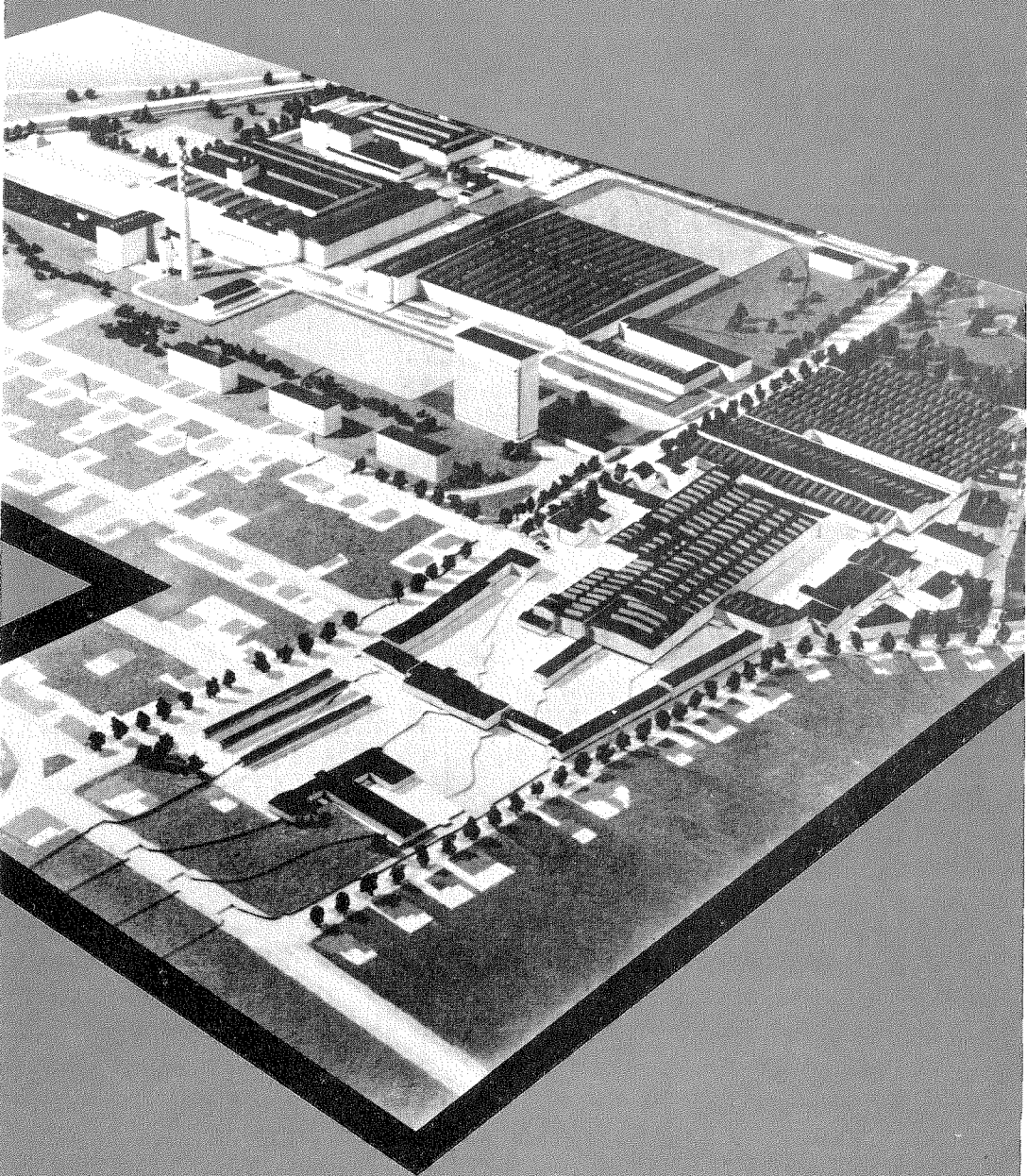
Mn 819



$\frac{A}{B} \cdot \frac{B}{D} = \frac{S}{3}$										$\frac{A}{B} \cdot \frac{C}{D} = \frac{10 \cdot 11}{B/1^{13}}$										$\frac{A}{B} \cdot \frac{C}{D} = \frac{M \cdot 22}{3 \cdot 7}$										$\frac{A}{B} \cdot \frac{C}{D} = \frac{7 \cdot 19}{5 \cdot DP}$									
S mm	A	B	C	D	$\frac{1''}{MM}$	A	B	C	D	M	A	B	C	D	DP	A	B	C	D																				
0,2	20	75	25	100	36	20	72	55	65	0,2	44	70	30	90	20	57	50	60	70																				
0,25	25	75	25	100	32	20	64	55	65	0,25	44	70	25	60	22	57	55	70	60																				
0,3	20	60	30	100	28	25	70	55	65	0,3	44	70	40	80	24	57	40	70	90																				
0,35	20	60	35	100	24	30	72	55	65	0,35	44	70	35	60	26	57	65	70	60																				
0,4	20	60	40	100	20	30	60	55	65	0,4	44	70	50	75	28	57	50	60	72																				
0,45	20	60	45	100	19	30	57	55	65	0,45	44	60	45	70	30	57	50	70	90																				
0,5	20	60	50	100	18	40	72	55	65	0,5	44	60	50	70	32	57	60	70	80																				
0,6	30	60	40	100	16	40	64	55	65	0,55	44	60	55	70	36	57	60	70	90																				
0,7	35	60	40	100	14	40	56	55	65	0,6	44	35	50	100	38	57	38	35	75																				
0,75	20	60	75	100	12	50	60	55	65	0,65	44	70	65	60	40	57	60	70	100																				
0,8	20	45	60	100	11	50	55	55	65	0,7	44	30	50	100	42	57	50	40	72																				
0,9	20	40	60	100	10	50	50	55	65	0,75	44	70	75	60	44	57	44	35	75																				
1	20	45	75	100	9	50	45	55	65	0,8	44	60	80	70	48	57	50	35	72																				
1,25	25	45	75	100	8	50	40	55	65	0,9	44	30	45	70	50	57	50	35	75																				
1,5	60	30	25	100	7	50	35	55	65	1	44	45	75	70	56	57	60	50	100																				
1,75	35	45	75	100						1,25	55	70	75	45	64	57	60	35	80																				
2	40	30	50	100						1,5	55	70	80	40	72	57	72	35	75																				
2,5	50	45	75	100											80	57	75	35	80																				
3	50	30	60																																				

MN 80 A

f. c



TOS ČELÁKOVICE