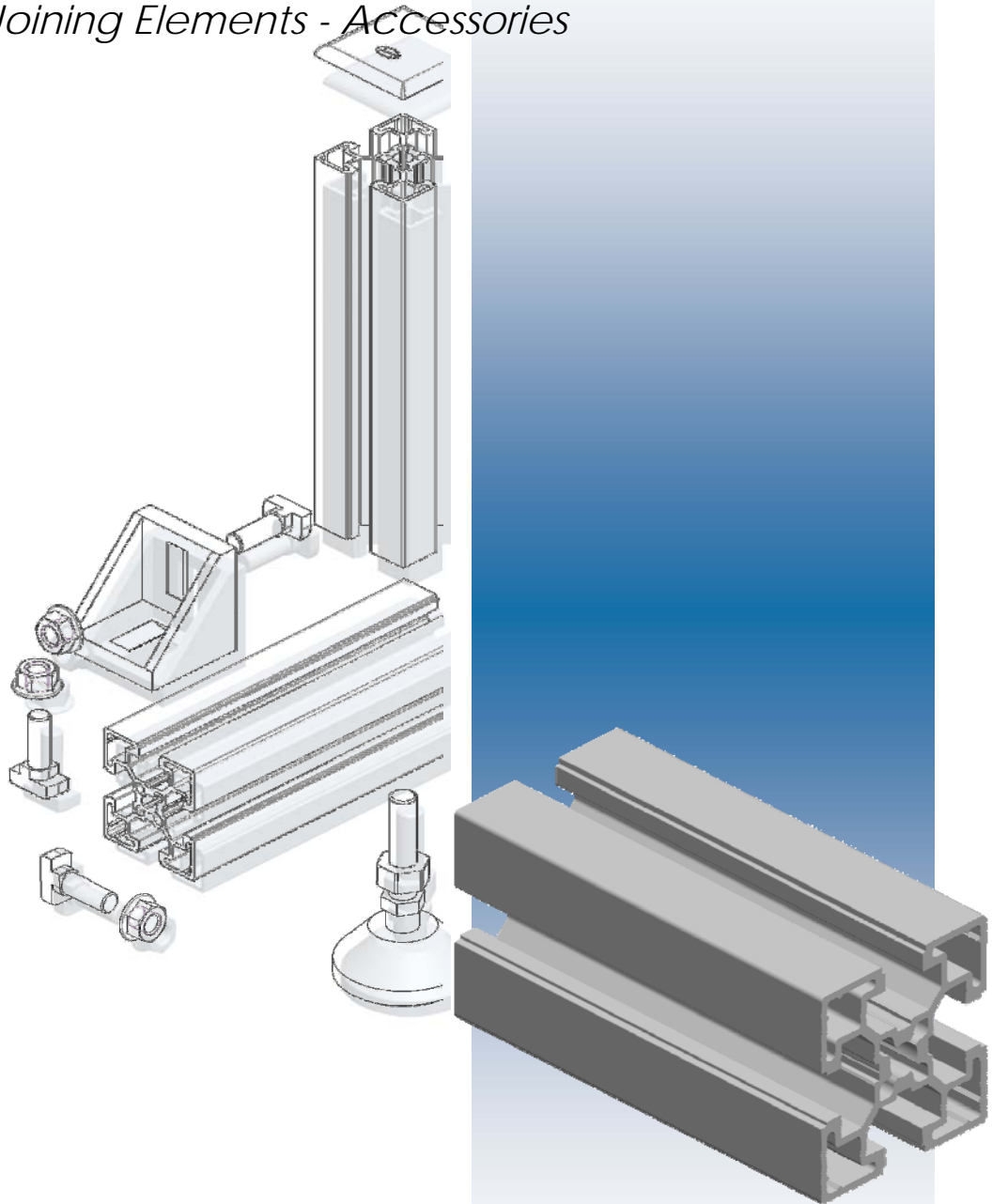




Modularni Sistem *Structural System*

Profili - Vezni elementi - Pribor
Profiles - Joining Elements - Accessories



KATALOG / CATALOG

Modularni sistem

Pri izdelavi modularnih sistemov predstavljajo danes aluminijasti profili enega najbolj ekonomičnih in elastičnih programov. Z uporabo teh profilov lahko zblížate montažo in načrtovanje, torej tako kot konstruktor sestavlja konstrukcije iz profilov, veznih elementov in številnih dodatkov v ponudbi podjetja **LIPRO**, na isti način tudi monter sestavi načrtovane konstrukcije.

Z modularnim sistemom sestavljene konstrukcije tako ni potrebno variti kot tudi ne barvati. Morebitne nadaljne spremembe so glede na njihovo enostavno razstavljanje hitro izvedljive, zamenjani material pa je še vedno uporaben. **LIPRO** nudi svojim kupcem sodoben center razreza in sestave.

LIPRO je na 12. mednarodnem sejmu **TEROTECH-VZDRŽEVANJE**, ki je potekal v Celju od 16.-19. maja 2006 prejel bronasto priznanje za izdelek **Modularni sistem**.

Structural system

*Aluminium profiles are today the cheapest and most flexible available way to produce structures. Using our profiles you can combine assembling and planning, because the designer can plan a structure, using the profiles and the various accessories supplied by **LIPRO**, and the fitter builds it as planned and designed.*

Welding and painting are not required during the construction with the structural profile system. All the constructions can be easily modified thanks to the possibility of reutilizing the unused material.

*Moreover, **LIPRO** offers to its customers the use of a well-equipped cutting and assembling center.*

*On the 12th International **TEROTECH-MAINTENANCE** Fair, this has taken place in Celje from 16. until 19. May 2006, **LIPRO** has received a bronze award for product **Modular Systems**.*

Sistema strutturale

I profili di alluminio per la realizzazione di strutture rappresentano il sistema più economico e flessibile oggi a disposizione. L'uso di questi profili permette di avvicinare il lavoro di montaggio a quello di progettazione, infatti come il progettista compone le strutture con i profili e i numerosi accessori offerti dalla **LIPRO**, così il montatore compone la struttura nello stesso modo con cui è stata progettata.

La costruzione con il sistema dei profili strutturali non richiede l'impiego di saldature e verniciatura. Le realizzazioni possono essere facilmente modificate recuperando il materiale impiegato.

La **LIPRO**, mette inoltre a disposizione dei Clienti un attrezzato centro di taglio e montaggio.

LIPRO ha ricevuto sulla 12a fiera internazionale **TEROTECH- MANUTENZIONE** tenutasi a Celje dal 16.-19. maggio 2006 il riconoscimento di bronzo per il programma **Sistema strutturale**.





LIPRO d.o.o.

Ulica 15. maja 22, 6000 Koper, SLOVENIJA
Tel. 00386-(0)5-625-1343 E-mail: lipro@siol.net
Fax.00386-(0)5-625-1344 www.lipro.si



Distributerji /Distributors /Distributori

ČEŠKA

VT-Flex s.r.o.
Těšniska 288,
73934 Šenov
TEL. 596 748 577
FAX:596 728 010
E-mail: sales@vt-flex.com
www.vt-flex.com

MADŽARSKA

ENTRA-SYS KFT.
Bkay Nandor U24,
H- 6724 SZEGED
TEL. 62 468 478
62 547 267
62 547 268
FAX: 62 421 403
e-mail: entra-sys@vnet.hu
www.entra-sys.hu

SRBIJA

SOKIĆ d.o.o.
Bulevar Kralja Aleksandra 447i
11160 BEOGRAD
Tel +381-11-2861-516:
FAX:+381-11-2861-498
E-mail: info@airtec.co.yu
www.airtec.co.yu

WESTPNEUMATIC o.d. Trstenik
Obilićeva 15
37240 TRSTENIK
Gsm: 063 8201 511
FAX:00381 37 719 040
E-mail: westcom@ptt.yu

Zastopnik /Agency /Agente

ITALIA

IVANO OLIVETTO
Pordenone
Gsm: 0039 334 651 9101
FAX: 0039 0434 657 144
E-mail: ivano.olivetto@alice.it



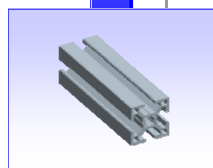
Vaš partner
pri avtomatizaciji proizvodnje

*Your partner
in production automation*

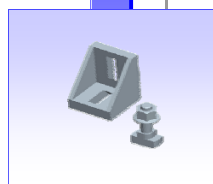
Il vostro partner per
l'automatizzazione della
produzione

K a z a l o **Index** **Indice**

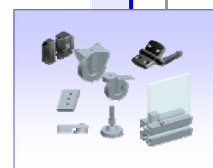
PROFILI
PROFILES
PROFILI **8-18**



VEZNI ELEMENTI
JOINING ELEMENTS
FISSAGGI **21-47**



PRIBOR
ACCESSORIES
ACCESSORI **51-74**

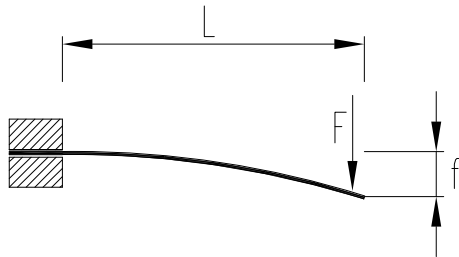


Modularni sistem
Structural system
Sistema strutturale

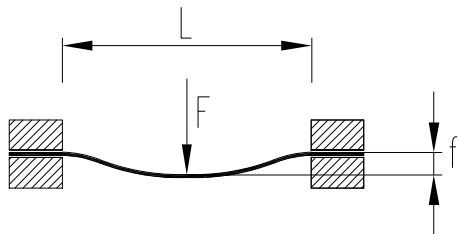
Uporabne formule

Useful formulas

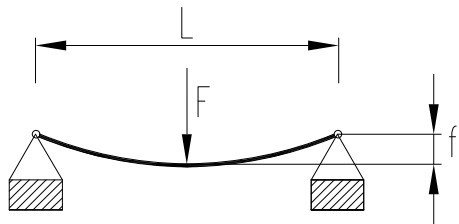
Formule utili



$$\sigma = \frac{F \cdot L}{W} \leq K \quad f = \frac{F \cdot L^3}{E \cdot I \cdot 3}$$



$$\sigma = \frac{F \cdot L}{8 \cdot W} \leq K \quad f = \frac{F \cdot L^3}{E \cdot I \cdot 192}$$



$$\sigma = \frac{F \cdot L}{4 \cdot W} \leq K \quad f = \frac{F \cdot L^3}{E \cdot I \cdot 48}$$

σ [N/mm ²]	f [mm]	W [mm ³]	F [N]	I [mm ⁴]	K [N/mm ²]	E [N/mm ²]
Upogibna napetost <i>Bending stress</i> Sforzo di flessione	Poves <i>Deflection</i> Flessione	Odpornostni moment <i>Section modulus</i> Modulo di resistenza	Sila <i>Force</i> Forza	Vztrajnostni moment <i>Moment of inertia</i> Momento d'inerzia	Max. upogibna napetost <i>Max. bending stress</i> Sforzo di flessione Max.	Modul elastičnosti <i>Coefficient of elasticity</i> Modulo d'elasticità

 [10³mm³=cm³]

 [10⁴mm⁴=cm⁴]

	Konstantna obremenitev <i>Constant burdening</i> Costante	Utripna obremenitev <i>Variabile burdening</i> Variabile	Izmenična obremenitev <i>Swinging burdening</i> Oscillante
K tipični [N/mm ²] K typical [N/mm ²] K tipico [N/mm ²]	100	40	30

Tehnični podatki
Technical data
Dati tecnici

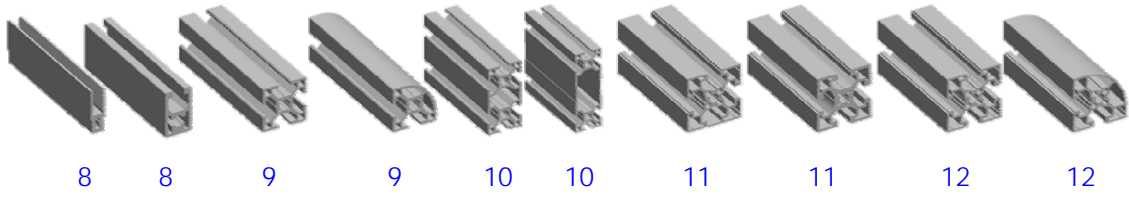
Oznaka in številka materiala po ISO standardu	Material designation and number according to ISO	Sigla e numero del materiale secondo ISO
	P-Al Mg Si 6060 [UNI 9006/1]	
Natezna trdnost	Minimum tensile strength	Resistenza minima alla trazione
	Rm = 195 N/mm ²	
Meja elastičnosti	Limit of elasticity	Limite elastico
	Rp 0,2 = 145 N/mm ²	
Modul elastičnosti	Coefficient of elasticity	Modulo d'elasticità
	E = 70.000 N/mm ²	
Fizično stanje	Physical status	Stato fisico
	T5	
Anodiziranje - debelina sloja	Anodizing process thickness	Processo d'anodizzazione-spessore
	15µm	
Toleranca dimenzij	Manufacturing tolerance	Tolleranza di fabbricazione

UNI - EN 755

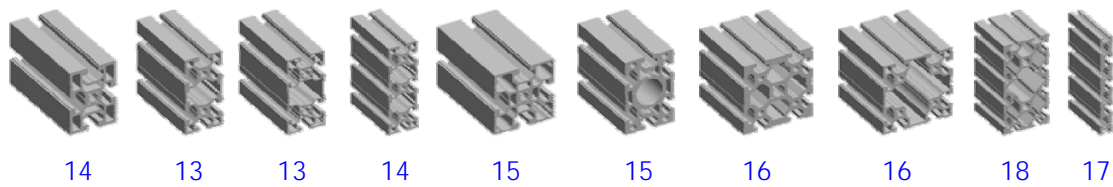
Šifra Code Codice	Naziv Description Descrizione	Vzrajnostni moment Moment of inertia Momento d'inerzia I [cm ⁴]		Odpornostni moment Section modulus Modulo di resistenza W [cm ³]		Površina Profile area Area [mm ²]	Masa / meter Weight Peso [kg/m]	Utor Slot Cava [mm]	Dolžina palice L. of bar L. barra [mm]
		x	y	x	y				
10001	Al. Profil mreže	1,01	0,16	0,79	0,32	139,42	0,37	8/10	6050
10002	Al. Profil 18,5x32	1,76	1,16	1,97	1,26	288,80	0,77	8	6050
10003	Al. Profil 30x30	2,76	2,76	1,84	1,84	297,33	0,80	8	6050
10004	Al. Profil 30x30 R	2,48	2,48	1,43	1,43	298,48	0,80	8	6050
10005	Al. Profil 30x60	19,03	5,28	6,34	3,52	542,13	1,45	8	6050
10006	Al. Profil 30x90	59,48	7,85	13,22	5,23	682,94	1,83	8	6050
10007	Al. Profil 45x45 L	11,41	11,41	5,07	5,07	583,63	1,56	10	6050
10008	Al. Profil 45x45 H	15,04	15,04	6,68	6,68	792,01	2,12	10	6050
10009	Al. Profil 45x45 C1	11,98	11,40	5,42	5,07	591,85	1,58	10	6050
10010	Al. Profil 45x45 R	9,14	9,14	3,53	3,53	516,84	1,38	10	6050
10011	Al. Profil 45x90 L	87,15	22,27	19,37	9,90	1059,88	2,84	10	6050
10012	Al. Profil 45x90 H	121,05	31,15	26,90	13,84	1493,25	4,00	10	6050
10013	Al. Profil 45x60	36,13	21,58	12,04	9,59	1088,02	2,91	10	6050
10014	Al. Profil 45x135	376,27	45,32	55,74	20,14	2125,83	5,69	10	6050
10015	Al. Profil 60x60	40,13	40,13	13,38	13,38	1227,13	3,29	10	6050
10016	Al. Profil 60x90	202,42	90,32	44,98	30,11	2533,36	6,78	10	6050
10017	Al. Profil 90x90 L	195,39	195,39	43,42	43,42	2091,97	5,60	10	6050
10018	Al. Profil 90x90 H	288,35	288,35	64,08	64,08	3600,61	9,64	10	6050
10019	Al. Profil 22,5x180	597,06	11,83	66,34	10,81	2210,48	5,92	8/10	6050
10020	Al. Profil 90x180	1889,54	510,18	209,95	113,37	5770,16	15,45	10	6050

Profili / Profiles / Profili

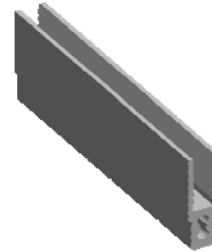
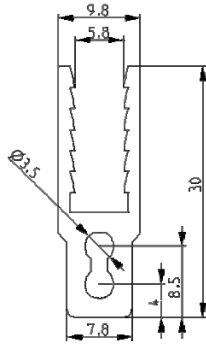
Stran
Page
Pagina



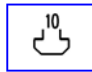

Stran
Page
Pagina



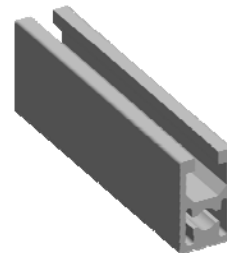
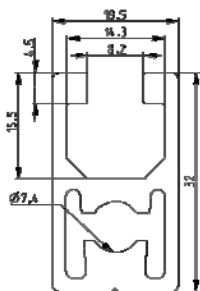
Naziv	Description	Descrizione
Al. Profil mreže za U8/10	Al. Profile for Grille U8/10	Profilo per griglia U8/10




Koda Code Codice

	Al. Profil mreže	10001
		

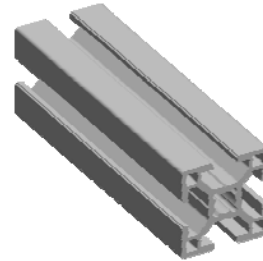
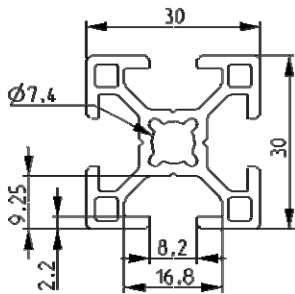
Naziv	Description	Descrizione
Al. Profil 18,5 x 32 U8	Al. Profile 18,5 x 32 U8	Profilo 18,5 x 32 U8




Koda Code Codice

	Al. Profil 18,5 x 32	10002
---	----------------------	-------

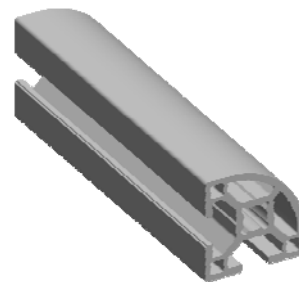
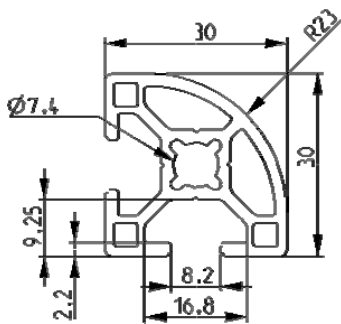
Naziv	Description	Descrizione
Al. Profil 30 x 30 U8	<i>Al. Profile 30 x 30 U8</i>	Profilo 30 x 30 U8




Koda Code Codice

	Al. Profil 30 x 30 U8	10003
---	-----------------------	-------

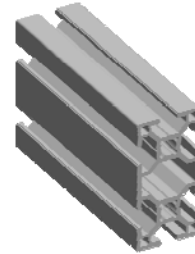
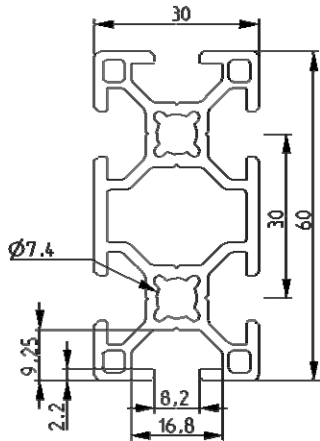
Naziv	Description	Descrizione
Al. Profil 30 x 30 R U8	<i>Al. Profile 30 x 30 R U8</i>	Profilo 30 x 30 R U8




Koda Code Codice

	Al. Profil 30 x 30 R U8	10004
---	-------------------------	-------

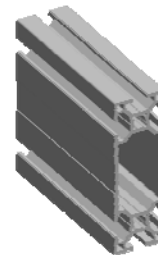
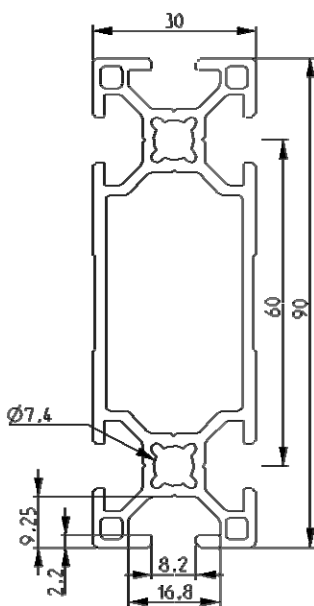
Naziv	Description	Descrizione
Al. Profil 30 x 60 U8	Al. Profile 30 x 60 U8	Profilo 30 x 60 U8




Koda Code Codice

	Al. Profil 30 x 60 U8	10005
---	-----------------------	-------

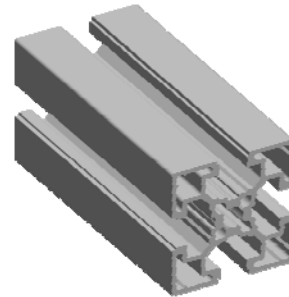
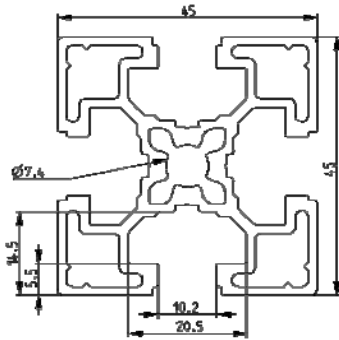
Naziv	Description	Descrizione
Al. Profil 30 x 90 U8	Al. Profile 30 x 90 U8	Profilo 30 x 90 U8



Koda Code Codice

	Al. Profil 30 x 90 U8	10006
---	-----------------------	-------

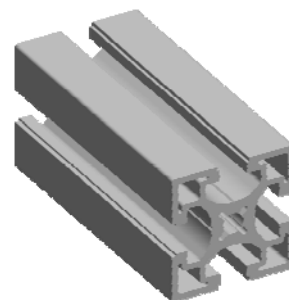
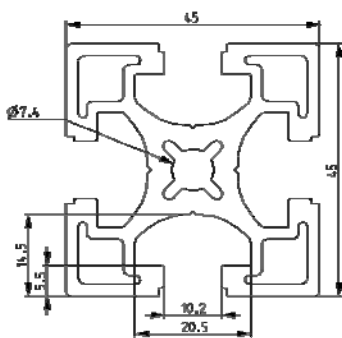
Naziv	Description	Descrizione
Al. Profil 45 x 45 L U10	<i>Al. Profile 45 x 45 L U10</i>	Profilo 45 x 45 L U10



Koda Code Codice

10	Al. Profil 45 x 45 L U10	10007
----	--------------------------	-------

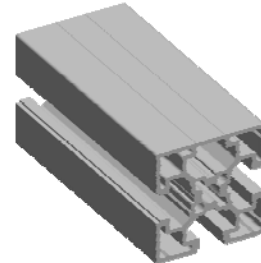
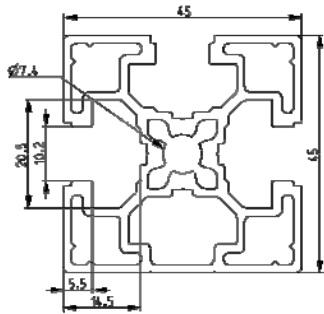
Naziv	Description	Descrizione
Al. Profil 45 x 45 H U10	<i>Al. Profile 45 x 45 H U10</i>	Profilo 45 x 45 H U10




Koda Code Codice

10	Al. Profil 45 x 45 H U10	10008
----	--------------------------	-------

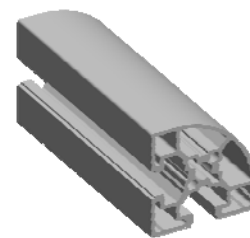
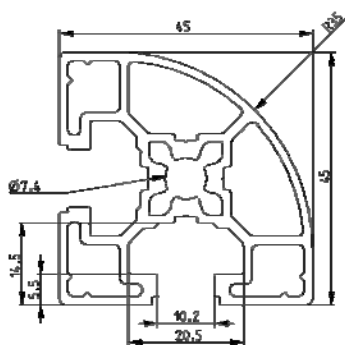
Naziv	Description	Descrizione
Al. Profil 45 x 45 C1 U10	<i>Al. Profile 45 x 45 C1 U10</i>	Profilo 45 x 45 C1 U10




Koda Code Codice

	Al. Profil 45 x 45 C1U10	10009
---	--------------------------	-------

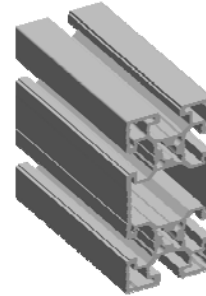
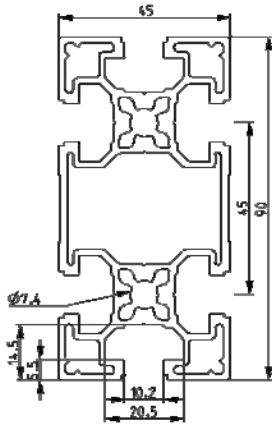
Naziv	Description	Descrizione
Al. Profil 45 x 45 R U10	<i>Al. Profile 45 x 45 R U10</i>	Profilo 45 x 45 R U10



Koda Code Codice

	Al. Profil 45 x 45 R U10	10010
---	--------------------------	-------

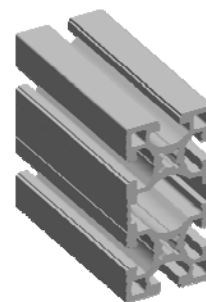
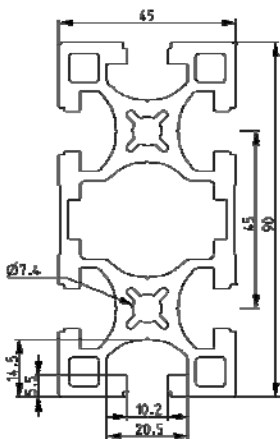
Naziv	Description	Descrizione
Al. Profil 45 x 90 L U10	<i>Al. Profile 45 x 90 L U10</i>	Profilo 45 x 90 L U10



Koda Code Codice

10	Al. Profil 45 x 90 L U10	10011
----	--------------------------	-------

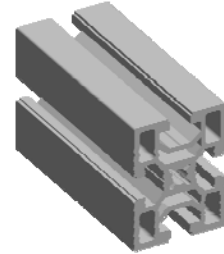
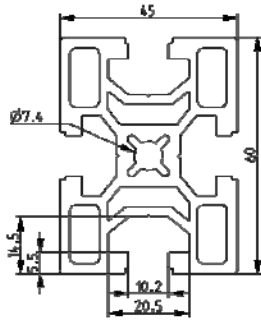
Naziv	Description	Descrizione
Al. Profil 45 x 90 H U10	<i>Al. Profile 45 x 90 H U10</i>	Profilo 45 x 90 H U10



Koda Code Codice

10	Al. Profil 45 x 90 H U10	10012
----	--------------------------	-------

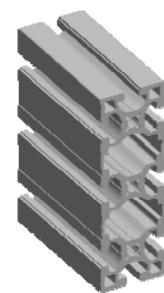
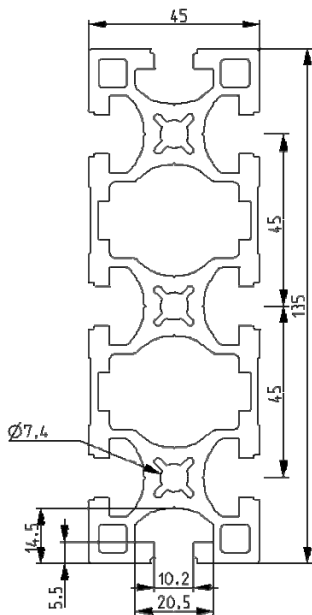
Naziv	Description	Descrizione
Al. Profil 45 x 60 U10	<i>Al. Profile 45 x 60 U10</i>	Profilo 45 x 60 U10




Koda Code Codice

	Al. Profil 45 x 60 U10	10013
---	------------------------	-------

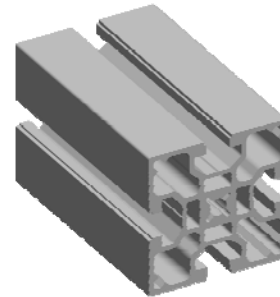
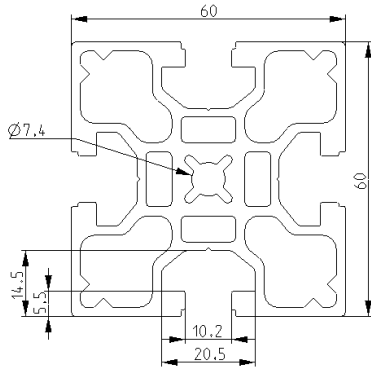
Naziv	Description	Descrizione
Al. Profil 45 x 135 U10	<i>Al. Profile 45 x 135 U10</i>	Profilo 45 x 135 U10



Koda Code Codice

	Al. Profil 45 x 135 U10	10014
---	-------------------------	-------

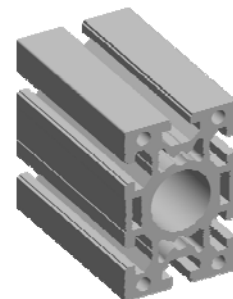
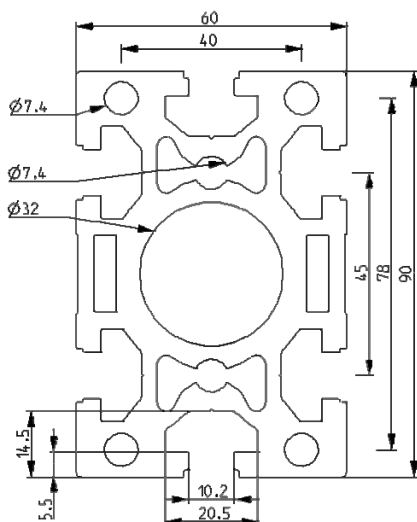
Naziv	Description	Descrizione
Al. Profil 60 x 60 U10	Al. Profile 60 x 60 U10	Profilo 60 x 60 U10



Koda Code Codice

10	Al. Profil 60 x 60 U10	10015
----	------------------------	-------

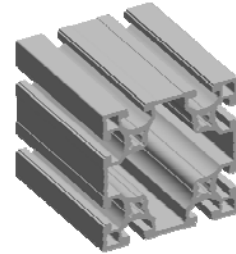
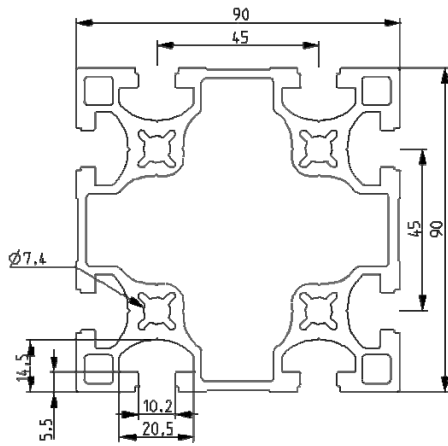
Naziv	Description	Descrizione
Al. Profil 60 x 90 U10	Al. Profile 60 x 90 U10	Profilo 60 x 90 U10




Koda Code Codice

10	Al. Profil 60 x 90 U10	10016
----	------------------------	-------

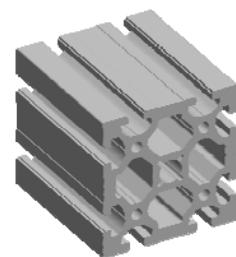
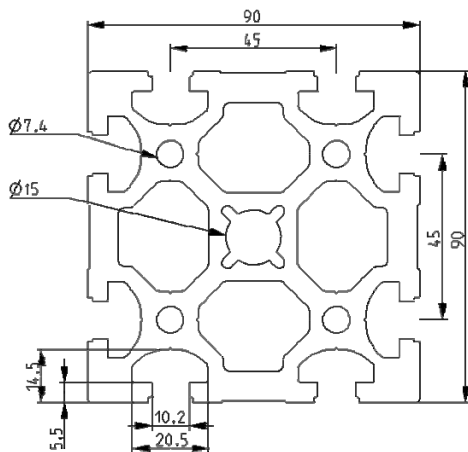
Naziv	Description	Descrizione
Al. Profil 90 x 90 L U10	Al. Profile 90 x 90 L U10	Profilo 90 x 90 L U10




Koda Code Codice

	Al. Profil 90 x 90 L U10	10017
---	--------------------------	-------

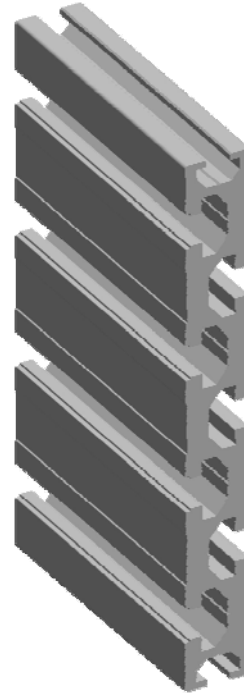
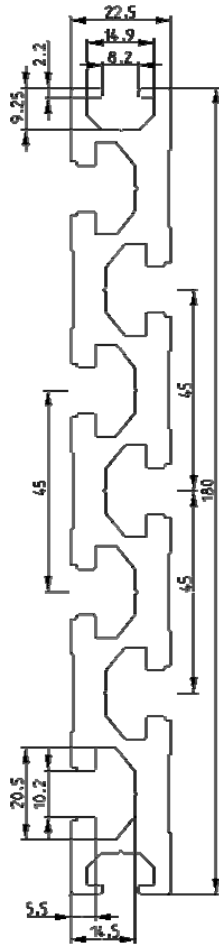
Naziv	Description	Descrizione
Al. Profil 90 x 90 H U10	Al. Profile 90 x 90 H U10	Profilo 90 x 90 H U10





Koda Code Codice

	Al. Profil 90 x 90 H U10	10018
---	--------------------------	-------

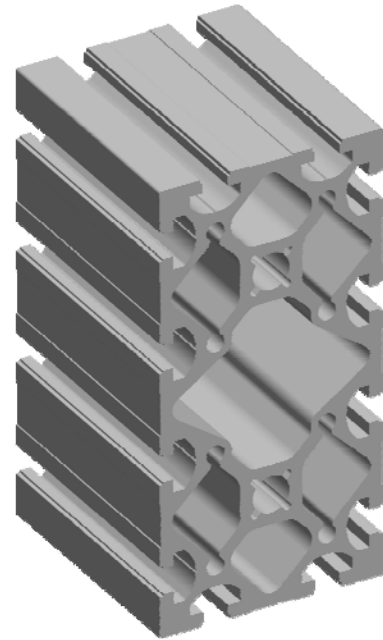
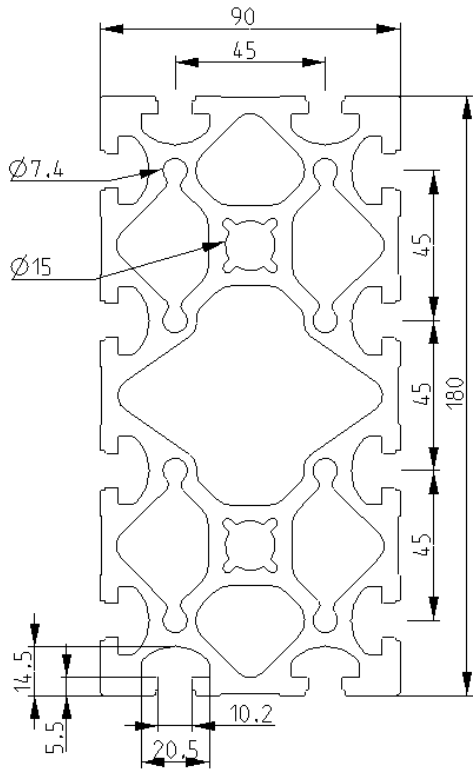
Naziv	Description	Descrizione
Al. Profil 22,5 x 180 U8/10	Al. Profile 22,5 x 180 U8/10	Profilo 22,5 x 180 U8/10




Koda Code Codice

	Al. Profil 22,5 x 180 U8/10	10019
		

Naziv	Description	Descrizione
Al. Profil 90 x 180 U10	Al. Profile 90 x 180 U10	Al. Profilo 90 x 180 U10



Koda Code Codice

	Al. Profil 90 x 180 U10	10020
---	-------------------------	-------