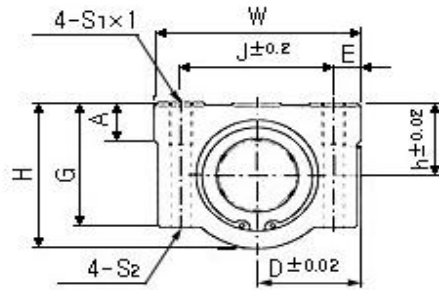




SC_VUU

Short Housing + Standard Bearing LM_UU



Short Housing		Dimensions (mm)														
Part number	Installed L/B	Load Ratings		Wgt. (gf)	Shaft Dia.	h	D	W	H	G	A	J	E	S1 x I	S2	LV
		C(N)	CO (N)													
SC8VUU	LM8UU	260	400	36	8	11	17	34	22	18	6	24	5	M4 jA8	3.4	15.4
SC10VUU	LM10UU	370	540	63	10	13	20	40	26	21	8	28	6	M5 jA12	4.3	19.5
SC12VUU	LM12UU	410	590	74	12	15	21	42	28	24	7.4	30.5	5.75	M5 jA12	4.3	20.5
SC13VUU	LM13UU	500	770	85	13	15	22	44	30	24.5	8	33	5.5	M5 jA12	4.3	20.5
SC16VUU	LM16UU	770	1170	132	16	19	25	50	38.5	32.5	9	36	7	M5 jA12	4.3	23.5
SC20VUU	LM20UU	860	1370	170	20	21	27	54	41	35	11	40	7	M6 jA12	5.2	27.4
SC25VUU	LM25UU	980	1560	405	25	26	38	76	51.5	41	12	54	11	M8 jA18	6.8	37.4
SC30VUU	LM30UU	1560	2740	495	30	30	39	78	59.5	49	15	58	10	M8 jA18	6.8	40.9
SC35VUU	LM35UU	1660	3130	790	35	34	45	90	68	54	18	70	10	M8 jA18	6.8	45.4
SC40VUU	LM40UU	2150	4010	1220	40	40	51	102	78	62	20	80	11	M10 jA25	8.6	56.4
SC50VUU	LM50UU	3820	7930	2300	50	52	61	122	102	80	24	100	11	M10 jA25	8.6	68.9

N.B. Part No LM_UU - With wipers / seals at both ends

User Guide:

Linear Bearings are designed to be assembled to Round Rails with a hardness of =>55Hrc
 (Assembly to our Round Rail part numbers: W, WV and WRA)